



November 30, 2017

Via E-Mail: Joshua_I_williams@dekalbschoolsga.org

Mr. Joshua L. Williams, MBA, MSM, PMP
Chief Operations Officer
DeKalb County School District
Operations Division
Sam Moss Service Center
1780 Montreal Road
Tucker, Georgia 30084

**Re: Final Technical Lead in Drinking Water Sampling Report
Stoneview Elementary School (Facility ID #4068)
2629 Huber Street, Lithonia, Georgia 30058
AEM Project No. 1561-1601**

Dear Mr. Williams:

Atlanta Environmental Management, Inc. (AEM) is pleased to provide the DeKalb County School District (DCSD) an electronic copy of the Final Technical Lead in Drinking Water Sampling Report for Stoneview Elementary School (Facility ID #4068).

Initial sampling was conducted on October 18, 2016, and analytical results were received from Analytical Environmental Services, Inc., on November 1, 2016. Additional drinking water samples from select source units were collected on October 17, 2017, and analytical results were received from Analytical Environmental Services, Inc., on October 24, 2017.

FINDINGS

Initial Testing

AEM collected 56 drinking water samples from 28 sources at Stoneview Elementary School (Facility ID #4068), including 2 duplicate samples (see Figure 1). Samples were collected in accordance with the Water Sampling Methodology Protocol for DeKalb County School District, dated September 12, 2016. A copy of AEM's Field Sampling Notes is provided in Attachment A.

None of the samples collected and analyzed contained lead at a concentration equal to or above EPA's action level of 15 parts per billion (ppb). A description of the drinking water outlets sampled and a summary of sample analytical results are provided in Table 1. A copy of the AES laboratory analytical report is provided in Attachment B.

In addition, DeKalb County Watershed Management (DCWM) collected a split sample with AEM from the Service Connection Water Line adjacent to Huber Street. DCWM's sample (32–Stoneview Elem) was analyzed by Pace Analytical Services, Inc. An excerpt from the Pace laboratory analytical report is provided in Attachment C.

Sample Results of Previously Identified Inoperable Source Units

During the initial sampling event on October 18, 2016, two source units (DF-007, and DF-010) were inoperable and could not be sampled. DCSD replaced the source units and AEM collected four drinking water samples on October 17, 2017.

None of the samples collected had a drinking water result that contained lead at a concentration at or above EPA's action level of 15 ppb. A description of the drinking water outlet sampled and a summary of sample analytical results are provided in Table 1. A copy of the AES laboratory analytical report is provided in Attachment B.

Sample Results of Previously Identified Source Units That Were Inconclusive

During the initial sampling event on October 18, 2016, the analytical result for the service connection was inconclusive. A resampling of the service connection was conducted on October 17, 2017, where AEM collected one sample. A description of the source unit sampled and a summary of sample analytical results are provided in Table 1.

The result for the service connection was below EPA's action level of 15 ppb.

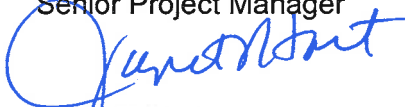
We appreciate your selection of AEM for this project. If you have any questions, please do not hesitate to contact us.

Sincerely,

Atlanta Environmental Management, Inc.



Leona Miles, CHMM
Senior Project Manager



Janet T. Hart
President

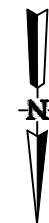
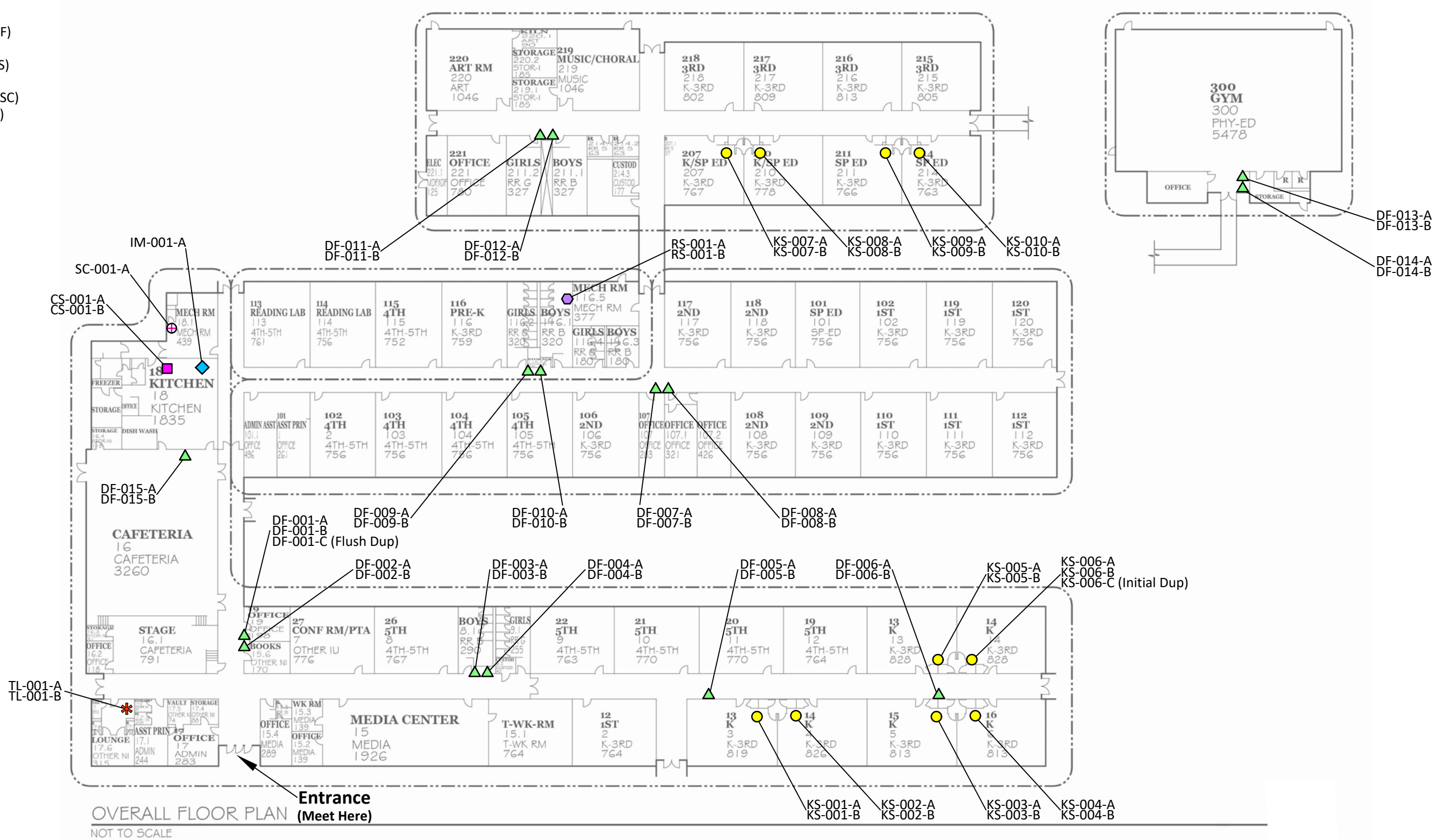
/krf


cc: Daniel Drake (DCSD)
Tracee Hill (DCSD)

FIGURE

Legend

- - Cafeteria Sink (CS)
- ▲ - Drinking Fountain (DF)
- ◆ - Ice Maker (IM)
- - Kindergarten Sink (KS)
- ⊕ - Restroom Sink (RS)
- ⊕ - Service Connection (SC)
- * - Teachers Lounge (TL)



 Atlanta Environmental Management, Inc. Environmental Consulting, Engineering, Hydrogeologic Services 2580 Northeast Expressway • Atlanta, Georgia 30345 Phone: 404.329.9006 • Fax: 404.329.2057		Client: DeKalb County School District Site Location: Stoneview Elementary School (#4068) 2629 Huber Street Lithonia, GA 30058	
PROJECT #:	1561-1601-4068	DATE:	November 29, 2017
DRAWN BY:	AL	REVISED:	----
CHECKED BY:	TR	SCALE:	NTS
PROJECT MGR:	LM	PRINTED:	11/29/2017 9:23 AM
Sample Location Plan			Figure 1

G:\DWG\1561-1601 DeKalb County Schools\4068\4068

TABLE

Table 1. Summary of Lead in Drinking Water Laboratory Analytical Results

Stoneview Elementary School

2629 Huber Street, Lithonia, GA 30058



Sample ID*	Sample Location Description	Sample Date & Time	Lead Test Results (ppb)
4068-101816-DF-001-A	Initial Draw Sample; Upper Left Elkay Drinking Fountain in Hallway near Rm 19	10/18/16 5:33 AM	None Detected
4068-101816-DF-001-B	Flush Sample; Upper Left Elkay Drinking Fountain in Hallway near Rm 19	10/18/16 5:34 AM	None Detected
4068-101816-DF-001-C	Flush Duplicate Sample; Upper Left Elkay Drinking Fountain in Hallway near Rm 19	10/18/16 5:35 AM	None Detected
4068-101816-DF-002-A	Initial Draw Sample; Lower Right Elkay Drinking Fountain in Hallway near Rm 19	10/18/16 5:36 AM	None Detected
4068-101816-DF-002-B	Flush Sample; Lower Right Elkay Drinking Fountain in Hallway near Rm 19	10/18/16 5:37 AM	None Detected
4068-101816-DF-003-A	Initial Draw Sample; Lower Left Elkay Drinking Fountain in Hallway near Boy's RR 8.1	10/18/16 5:44 AM	None Detected
4068-101816-DF-003-B	Flush Sample; Lower Left Elkay Drinking Fountain in Hallway near Boy's RR 8.1	10/18/16 5:45 AM	None Detected
4068-101816-DF-004-A	Initial Draw Sample; Upper Right Elkay Drinking Fountain in Hallway near Boy's RR 8.1	10/18/16 5:46 AM	None Detected
4068-101816-DF-004-B	Flush Sample; Upper Right Elkay Drinking Fountain in Hallway near Boy's RR 8.1	10/18/16 5:47 AM	None Detected
4068-101816-DF-005-A	Initial Draw Sample; Single Wall Mounted Elkay Drinking Fountain in Hallway near Rm 3	10/18/16 4:59 AM	None Detected
4068-101816-DF-005-B	Flush Sample; Single Wall Mounted Elkay Drinking Fountain in Hallway near Rm 3	10/18/16 5:00 AM	None Detected
4068-101816-DF-006-A	Initial Draw Sample; Single Wall Mounted Elkay Drinking Fountain in Hallway near Rm 5	10/18/16 5:19 AM	None Detected
4068-101816-DF-006-B	Flush Sample; Single Wall Mounted Elkay Drinking Fountain in Hallway near Rm 5	10/18/16 5:20 AM	None Detected
4068-101816-DF-007-A	Not Sampled; Upper Right Elkay Drinking Fountain in Hallway near Rm 107; inoperable	NS	NS
4068-101816-DF-007-B	Not Sampled; Upper Right Elkay Drinking Fountain in Hallway near Rm 107; inoperable	NS	NS
4068-101717-DF-007-A	Initial Draw sample; Upper Right Elkay Drinking Fountain in Hallway near Rm 107	10/17/17 5:05 AM	None Detected
4068-101717-DF-007-B	Flush sample; Upper Right Elkay Drinking Fountain in Hallway near Rm 107	10/17/17 5:06 AM	None Detected
4068-101816-DF-008-A	Initial Draw Sample; Lower Left Elkay Drinking Fountain in Hallway near Rm 107	10/18/16 5:36 AM	None Detected
4068-101816-DF-008-B	Flush Sample; Lower Left Elkay Drinking Fountain in Hallway near Rm 107	10/18/16 5:37 AM	None Detected
4068-101816-DF-009-A	Initial Draw Sample; Lower Left Elkay Drinking Fountain in Hallway near Girl's RR 116.2	10/18/16 5:25 AM	None Detected
4068-101816-DF-009-B	Flush Sample; Lower Left Elkay Drinking Fountain in Hallway near Girl's RR 116.2	10/18/16 5:26 AM	None Detected
4068-101816-DF-010-A	Not Sampled; Upper Right Elkay Drinking Fountain in Hallway near Girl's RR 116.2; inoperable	NS	NS
4068-101816-DF-010-B	Not Sampled; Upper Right Elkay Drinking Fountain in Hallway near Girl's RR 116.2; inoperable	NS	NS
4068-101717-DF-010-A	Initial Draw sample; Upper Right Elkay Drinking Fountain in Hallway near Girl's RR 116.2	10/17/17 5:00 AM	None Detected
4068-101717-DF-010-B	Flush sample; Upper Right Elkay Drinking Fountain in Hallway near Girl's RR 116.2	10/17/17 5:01 AM	None Detected
4068-101816-DF-011-A	Initial Draw Sample; Upper Right Oasis Drinking Fountain in Hallway near Women's RR 211.2	10/18/16 5:44 AM	None Detected
4068-101816-DF-011-B	Flush Sample; Upper Right Oasis Drinking Fountain in Hallway near Women's RR 211.2	10/18/16 5:45 AM	None Detected

Table 1. Summary of Lead in Drinking Water Laboratory Analytical Results

Stoneview Elementary School

2629 Huber Street, Lithonia, GA 30058



Sample ID*	Sample Location Description	Sample Date & Time	Lead Test Results (ppb)
4068-101816-DF-012-A	Initial Draw Sample; Lower Left Oasis Drinking Fountain in Hallway near Men's RR 211.1	10/18/16 5:46 AM	None Detected
4068-101816-DF-012-B	Flush Sample; Lower Left Oasis Drinking Fountain in Hallway near Men's RR 211.1	10/18/16 5:47 AM	None Detected
4068-101816-DF-013-A	Initial Draw Sample; Lower Left Elkay Drinking Fountain in Gym	10/18/16 5:25 AM	None Detected
4068-101816-DF-013-B	Flush Sample; Lower Left Elkay Drinking Fountain in Gym	10/18/16 5:26 AM	None Detected
4068-101816-DF-014-A	Initial Draw Sample; Upper Right Elkay Drinking Fountain in Gym	10/18/16 5:29 AM	None Detected
4068-101816-DF-014-B	Flush Sample; Upper Right Elkay Drinking Fountain in Gym	10/18/16 5:30 AM	None Detected
4068-101816-DF-015-A	Initial Draw Sample; Elkay Drinking Fountain in Cafeteria near Entrance to Kitchen	10/18/16 5:15 AM	2.39
4068-101816-DF-015-B	Flush Sample; Elkay Drinking Fountain in Cafeteria near Entrance to Kitchen	10/18/16 5:16 AM	2.03
4068-101816-KS-001-A	Initial Draw Sample; Sink with Bubblers in Rm 3; Faucet Dripping; Sampled from Bubblers	10/18/16 5:03 AM	None Detected
4068-101816-KS-001-B	Flush Sample; Sink with Bubblers in Rm 3; Faucet Dripping; Sampled from Bubblers	10/18/16 5:04 AM	None Detected
4068-101816-KS-002-A	Initial Draw Sample; Sink with Bubblers in Rm 4; Sampled from Bubblers	10/18/16 5:09 AM	None Detected
4068-101816-KS-002-B	Flush Sample; Sink with Bubblers in Rm 4; Sampled from Bubblers	10/18/16 5:10 AM	None Detected
4068-101816-KS-003-A	Initial Draw Sample; Sink with Bubblers in Rm 5; Sampled from Bubblers	10/18/16 5:15 AM	None Detected
4068-101816-KS-003-B	Flush Sample; Sink with Bubblers in Rm 5; Sampled from Bubblers	10/18/16 5:16 AM	None Detected
4068-101816-KS-004-A	Initial Draw Sample; Sink with Bubblers in Rm 6; Sampled from Faucet; Bubblers inoperable	10/18/16 5:25 AM	None Detected
4068-101816-KS-004-B	Flush Sample; Sink with Bubblers in Rm 6; Sampled from Faucet; Bubblers inoperable	10/18/16 5:26 AM	None Detected
4068-101816-KS-005-A	Initial Draw Sample; Sink with Bubblers in Rm 13; Sampled from Bubblers	10/18/16 5:34 AM	None Detected
4068-101816-KS-005-B	Flush Sample; Sink with Bubblers in Rm 13; Sampled from Bubblers	10/18/16 5:35 AM	None Detected
4068-101816-KS-006-A	Initial Draw Sample; Sink with Bubblers in Rm 14; Bubblers inoperable, Sampled from Faucet	10/18/16 5:30 AM	None Detected
4068-101816-KS-006-B	Flush Sample; Sink with Bubblers in Rm 14; Bubblers inoperable, Sampled from Faucet	10/18/16 5:32 AM	None Detected
4068-101816-KS-006-C	Initial Duplicate Sample; Sink with Bubblers in Rm 14; Bubblers inoperable, Sampled from Faucet	10/18/16 5:31 AM	None Detected
4068-101816-KS-007-A	Initial Draw Sample; Sink with no Bubblers in Rm 207; Faucet Dripping; sampled from Faucet	10/18/16 4:58 AM	None Detected
4068-101816-KS-007-B	Flush Sample; Sink with no Bubblers in Rm 207; Faucet Dripping; Faucet Dripping; sampled from Faucet	10/18/16 4:59 AM	None Detected
4068-101816-KS-008-A	Initial Draw Sample; Sink with no Bubblers in Rm 210; Faucet Dripping; sampled from Faucet	10/18/16 5:03 AM	None Detected

Table 1. Summary of Lead in Drinking Water Laboratory Analytical Results

Stoneview Elementary School

2629 Huber Street, Lithonia, GA 30058



Sample ID*	Sample Location Description	Sample Date & Time	Lead Test Results (ppb)
4068-101816-KS-008-B	Flush Sample; Sink with no Bubblers in Rm 210; Faucet Dripping; sampled from Faucet	10/18/16 5:04 AM	None Detected
4068-101816-KS-009-A	Initial Draw Sample; Sink with no Bubblers in Rm 211; Faucet Dripping; sampled from Faucet	10/18/16 5:09 AM	None Detected
4068-101816-KS-009-B	Flush Sample; Sink with no Bubblers in Rm 211; Faucet Dripping; sampled from Faucet	10/18/16 5:10 AM	None Detected
4068-101816-KS-010-A	Initial Draw Sample; Sink with no Bubblers in Rm 214; Faucet Dripping; sampled from Faucet	10/18/16 5:13 AM	None Detected
4068-101816-KS-010-B	Flush Sample; Sink with no Bubblers in Rm 214; Faucet Dripping; sampled from Faucet	10/18/16 5:14 AM	None Detected
4068-101816-RS-001-A	Initial Draw Sample; Rightmost Sink in Boy's RR 116.1	10/18/16 5:21 AM	None Detected
4068-101816-RS-001-B	Flush Sample; Rightmost Sink in Boy's RR 116.1	10/18/16 5:22 AM	None Detected
4068-101816-CS-001-A	Initial Draw Sample; Food Prep Sink near Ice Machine; faucet Dripping	10/18/16 4:56 AM	None Detected
4068-101816-CS-001-B	Flush Sample; Food Prep Sink near Ice Machine; faucet Dripping	10/18/16 4:57 AM	None Detected
4068-101816-TL-001-A	Initial Draw Sample; Sink in Teacher's Lounge Rm 17.6 near Entrance	10/18/16 4:55 AM	None Detected
4068-101816-TL-001-B	Flush Sample; Sink in Teacher's Lounge Rm 17.6 near Entrance	10/18/16 4:56 AM	None Detected
4068-101816-IM-001-A	Initial Draw Sample; Scotsman Ice Machine to Right of Food Prep Sink	10/18/16 5:00 AM	None Detected
4068-101816-SC-001-A	Service Connection Line at Huber Street. Meter on right side.	10/18/16 5:48 AM	**
4068-101717-SC-001-A	Service Connection Entry into Building	10/17/17 4:55 AM	2.96
32-Stoneview Elem***	DeKalb County Watershed Split Sample of Service Connection. Split with SC-001-A	10/18/16 5:48 AM	**

Notes:

ppb-parts per billion

Bold-Exceeds 15 ppb--EPA's Action Level for Lead

* Note--Where "A" and "B" are indicated, AEM collected two samples at each source area location: ("A") initial draw sample; and ("B") after a 30-second flush sample

**Inconclusive Sample Result; Resampling conducted

***Information provided by DeKalb County Watershed Management

NS- Not sampled; source unit inoperable on 10/18/16

ATTACHMENT A
AEM Field Sampling Forms

**DEKALB COUNTY SCHOOL DISTRICT
LEAD IN DRINKING WATER FIELD DATA SHEET**

* KS's that worked
came out very slow

FACILITY NAME: STONEVIEW ELEMENTARY FACILITY
ADDRESS: 2629 Huber Street Lithonia, GA, 30058

FACILITY ID: 4068

* RM #'s were covered up
-Teacher's Rm

DATE	TIME	SAMPLE ID (Facility ID-Date-Location Type-Sequential #-Sample Type)	NEAREST ROOM	LOCATION (circle)	DESCRIPTION	SAMPLER INIT.
10/18/16	0503	4068 - 101816 - KS-001-A	13	In room Hallway	Sink w/ bubbler. Sampled from bubbler. faucet dripping	LH
10/18/16	0504	4068 - 101816 - KS-001-B	3	In room Hallway	"	LH
10/18/16	0509	4068 - 101816 - KS-002-A	4	In room Hallway	Sink w/ bubbler. Sampled from bubbler	LH
10/18/16	0510	4068 - 101816 - KS-002-B	4	In room Hallway	"	LH
10/18/16	0515	4068 - 101816 - KS-003-A	5	In room Hallway	"	LH
10/18/16	0516	4068 - 101816 - KS-003-B	5	In room Hallway	"	LH
10/18/16	0525	4068 - 101816 - KS-004-A	6	In room Hallway	Sink w/ bubbler. Bubbler not working. Sampled from faucet	LH
10/18/16	0526	4068 - 101816 - KS-004-B	6	In room Hallway	"	LH
10/18/16	0534	4068 - 101816 - KS-005-A	13	In room Hallway	Sink w/ bubbler. Sampled from bubbler	LH
10/18/16	0535	4068 - 101816 - KS-005-B	13	In room Hallway	"	LH

↓
Hurt Rm
~~Fisher~~
Bayl's Rm
Jackson
Grant
Odens

LOCATION TYPE: AF = athletic field; CS = cafeteria sink; DF = drinking fountain; IM = ice maker; KS = kindergarten sink; RS = restroom sink; SC = service connection; TL = teachers' lounge. SAMPLE TYPE: A = initial draw; B = flush; C = duplicate

**DEKALB COUNTY SCHOOL DISTRICT
LEAD IN DRINKING WATER FIELD DATA SHEET**

FACILITY NAME: STONEVIEW ELEMENTARY FACILITY
 ADDRESS: 2629 Huber Street Lithonia, GA, 30058

FACILITY ID: 4068

DATE	TIME	SAMPLE ID (Facility ID-Date-Location Type-Sequential #-Sample Type)	NEAREST ROOM	LOCATION (circle)	DESCRIPTION	SAMPLER INIT.
10/18/16	0530	4068 - 101816 - KS-006-A	14	In room Hallway	Sink w/ bubbler Bubbler not working. sampled from faucet	LH
10/18/16	0532	4068 - 101816 - KS-006-B	14	In room Hallway	" "	LH
10/18/16	0531	4068 - 101816 - KS-006-C	14	In room Hallway	" " initial dup	LH
10/18/16	0459	4068 - 101816 - DF-005-A	Rm ^{near} 3	In room Hallway	single Elkay DF in hallway next to Rm 3 wall mount	LH
10/18/16	0500	4068 - 101816 - DF-005-B	near Rm 3	In room Hallway	" "	LH
10/18/16	0519	4068 - 101816 - DF-006-A	next to Rm 5	In room Hallway	single Elkay DF in hallway next to Rm 5 wall mount	LH
10/18/16	0520	4068 - 101816 - DF-006-B	" "	In room Hallway	" "	LH
10/18/16	0455	4068 - 101816 - TL-001-A	Teacher's lounge 17.6	In room Hallway	sink in teachers lounge near entrance	LH
10/18/16	0456	4068 - 101816 - TL-001-B	" "	In room Hallway	" "	LH
10/18/16	0548	4068 - 101816 - SC-001-A		In room Hallway	#32 meter on right Huber St. couldn't get meter #	LH

LOCATION TYPE: AF = athletic field; CS = cafeteria sink; DF = drinking fountain; IM = ice maker; KS = kindergarten sink; RS = restroom sink; SC = service connection; TL = teachers' lounge. SAMPLE TYPE: A = initial draw; B = flush; C = duplicate

**DEKALB COUNTY SCHOOL DISTRICT
LEAD IN DRINKING WATER FIELD DATA SHEET**

FACILITY NAME: STONEVIEW ELEMENTARY FACILITY
 ADDRESS: 2629 Huber Street Lithonia, GA, 30058

FACILITY ID: 4068

DATE	TIME	SAMPLE ID (Facility ID-Date-Location Type-Sequential #-Sample Type)	NEAREST ROOM	LOCATION (circle)	DESCRIPTION	SAMPLER INIT.
10/18/16	0458	4068 - 101816 - KS-007-A	Hicks 207	In room Hallway	sink with no bubbler sample from sink sink dripping slowly	ef
10/18/16	0459	4068 - 101816 - KS-007-B	↓	In room Hallway	↓	ef
10/18/16	0503	4068 - 101816 - KS-008-A	Sheppard 210	In room Hallway	no bubbler. sample from sink	ef
10/18/16	0504	4068 - 101816 - KS-008-B	↓	In room Hallway	↓	ef
10/18/16	0509	4068 - 101816 - KS-009-A	Peddler 211	In room Hallway	no bubbler, sample from sink	ef
10/18/16	0510	4068 - 101816 - KS-009-B	↓	In room Hallway	↓	ef
10/18/16	0513	4068 - 101816 - KS-010-A	214	In room Hallway	no bubbler, sample from sink	ef
10/18/16	0514	4068 - 101816 - KS-010-B	214	In room Hallway	↓	ef
10/18/16	0525	4068 - 101816 - DF-013-A	Gym	In room Hallway	Entrance, lower left ElKay	ef
10/18/16	0526	4068 - 101816 - DF-013-B	↓	In room Hallway		↓

LOCATION TYPE: AF = athletic field; CS = cafeteria sink; DF = drinking fountain; IM = ice maker; KS = kindergarten sink; RS = restroom sink; SC = service connection; TL = teachers' lounge. SAMPLE TYPE: A = initial draw; B = flush; C = duplicate

**DEKALB COUNTY SCHOOL DISTRICT
LEAD IN DRINKING WATER FIELD DATA SHEET**

FACILITY NAME: STONEVIEW ELEMENTARY FACILITY
 ADDRESS: 2629 Huber Street Lithonia, GA, 30058

FACILITY ID: 4068

DATE	TIME	SAMPLE ID (Facility ID-Date-Location Type-Sequential #-Sample Type)	NEAREST ROOM	LOCATION (circle)	DESCRIPTION	SAMPLER INIT.
10/18/16	0529	4068 - 101816 - DF-014-A	Gym ↓	In room Hallway	Upper right Elkay ↓	CS
10/18/16	0530	4068 - 101816 - DF-014-B		In room Hallway		↓
10/18/16	0536	4068 - 101816 - DF-008-A	107	In room Hallway	Elkay lower left	CS
10/18/16	0537	4068 - 101816 - DF-008-B		In room Hallway		CS
10/18/16	0538	4068 - 101816 - DF-007-A		In room Hallway	Elkay lower right not working not sampled	
10/18/16	0539	4068 - 101816 - DF-007-B DF-007-B		In room Hallway	not working not sampled	
10/18/16	0544	4068 - 101816 - DF-011-A	Women RR 211.2 ↓	In room Hallway	Upper right Elkay oasis	CS
10/18/16	0545	4068 - 101816 - DF-011-B		In room Hallway		↓
10/18/16	0546	4068 - 101816 - DF-012-A	Men RR 211.1 ↓	In room Hallway	Lower left oasis	CS
10/18/16	0547	4068 - 101816 - DF-012-B		In room Hallway		↓

LOCATION TYPE: AF = athletic field; CS = cafeteria sink; DF = drinking fountain; IM = ice maker; KS = kindergarten sink; RS = restroom sink; SC = service connection; TL = teachers' lounge. SAMPLE TYPE: A = initial draw; B = flush; C = duplicate

**DEKALB COUNTY SCHOOL DISTRICT
LEAD IN DRINKING WATER FIELD DATA SHEET**

FACILITY NAME: STONEVIEW ELEMENTARY FACILITY
 ADDRESS: 2629 Huber Street Lithonia, GA, 30058

FACILITY ID: 4068

DATE	TIME	SAMPLE ID (Facility ID-Date-Location Type-Sequential #-Sample Type)	NEAREST ROOM	LOCATION (circle)	DESCRIPTION	SAMPLER INIT.
10/18/16	0533	4068 - 101816 - DF-001-A	asst. principal RM 19	In room Hallway	Elkay, Tall fountain on left	AJ
10/18/16	0534	4068 - 101816 - DF-001-B	"	In room Hallway	"	AJ
10/18/16	0535	4068 - 101816 - DF-001-C	"	In room Hallway	" Flush Dup	AJ
10/18/16	0536	4068 - 101816 - DF-002-A	"	In room Hallway	Elkay, short fountain on right	AJ
10/18/16	0537	4068 - 101816 - DF-002-B	"	In room Hallway	"	AJ
10/18/16	0544	4068 - 101816 - DF-003-A	Boys bathroom 8:1	In room Hallway	Elkay, short fountain on left	AJ
10/18/16	0545	4068 - 101816 - DF-003-B	"	In room Hallway	"	AJ
10/18/16	0546	4068 - 101816 - DF-004-A	"	In room Hallway	Elkay, Tall fountain on right	AJ
10/18/16	0547	4068 - 101816 - DF-004-B	"	In room Hallway		AJ
10/18/16		4068 - 101816 -		In room Hallway		

LOCATION TYPE: AF = athletic field; CS = cafeteria sink; DF = drinking fountain; IM = ice maker; KS = kindergarten sink; RS = restroom sink; SC = service connection; TL = teachers' lounge. SAMPLE TYPE: A = initial draw; B = flush; C = duplicate

**DEKALB COUNTY SCHOOL DISTRICT
LEAD IN DRINKING WATER FIELD DATA SHEET**

FACILITY NAME: STONEVIEW ELEMENTARY FACILITY
 ADDRESS: 2629 Huber Street Lithonia, GA, 30058

FACILITY ID: 4068

DATE	TIME	SAMPLE ID (Facility ID-Date-Location Type-Sequential #-Sample Type)	NEAREST ROOM	LOCATION (circle)	DESCRIPTION	SAMPLER INIT.
10/18/16	0456	4068 - 101816 - CS-001-A	Kitchen 18	In room Hallway	Food prep sink near ice machine dripping on arrival	AA
10/18/16	0457	4068 - 101816 - CS-001-B	"	In room Hallway	"	AA
10/18/16	0500	4068 - 101816 - IM-001-A	"	In room Hallway	Scotsman Ice machine to right of food prep sink	AA
10/18/16	0521	4068 - 101816 - RS-001-A	Boys rest room 116.1	In room Hallway	sink farthest to right	AA
10/18/16	0522	4068 - 101816 - RS-001-B	"	In room Hallway	"	AA
10/18/16	0525	4068 - 101816 - DF-009-A	Girls bathroom 116.2	In room Hallway	Elkay, short fountain on left	AA
10/18/16	0526	4068 - 101816 - DF-009-B	"	In room Hallway	"	AA
10/18/16	—	4068 - 101816 - DF-010-A	"	In room Hallway	Elkay, tall fountain on right Not sampled; NOT WORKING	AA
10/18/16	—	4068 - 101816 - DF-010-B	"	In room Hallway	"	AA
10/18/16		4068 - 101816 -		In room Hallway		

LOCATION TYPE: AF = athletic field; CS = cafeteria sink; DF = drinking fountain; IM = ice maker; KS = kindergarten sink; RS = restroom sink; SC = service connection; TL = teachers' lounge. SAMPLE TYPE: A = initial draw; B = flush; C = duplicate

**DEKALB COUNTY SCHOOL DISTRICT
LEAD IN DRINKING WATER FIELD DATA SHEET**

FACILITY NAME: STONEVIEW ELEMENTARY FACILITY
 ADDRESS: 2629 Huber Street Lithonia, GA, 30058

FACILITY ID: 4068

DATE	TIME	SAMPLE ID (Facility ID-Date-Location Type-Sequential #-Sample Type)	NEAREST ROOM	LOCATION (circle)	DESCRIPTION	SAMPLER INIT.
10/18/16	0515	4068 - 101816 - DF-015-A	cafeteria 16	In room Hallway	Elkay, Drinking fountain near entrance to kitchen	M
10/18/16	0516	4068 - 101816 - DF-015-B	cafeteria 16	In room Hallway	11	M
10/18/16		4068 - 101816 -		In room Hallway		
10/18/16		4068 - 101816 -		In room Hallway		
10/18/16		4068 - 101816 -		In room Hallway		
10/18/16		4068 - 101816 -		In room Hallway		
10/18/16		4068 - 101816 -		In room Hallway		
10/18/16		4068 - 101816 -		In room Hallway		
10/18/16		4068 - 101816 -		In room Hallway		
10/18/16		4068 - 101816 -		In room Hallway		

LOCATION TYPE: AF = athletic field; CS = cafeteria sink; DF = drinking fountain; IM = ice maker; KS = kindergarten sink; RS = restroom sink; SC = service connection; TL = teachers' lounge. SAMPLE TYPE: A = initial draw; B = flush; C = duplicate

**DEKALB COUNTY SCHOOL DISTRICT
LEAD IN DRINKING WATER FIELD DATA SHEET**

FACILITY NAME: STONEVIEW ELEMENTARY FACILITY
ADDRESS: 2629 Huber Street Lithonia, GA, 30058

FACILITY ID: 4068

DATE	TIME	SAMPLE ID (Facility ID-Date-Location Type-Sequential #-Sample Type)	NEAREST ROOM	LOCATION (circle)	DESCRIPTION	SAMPLER INIT.
10/17/17	0455	4068 - 101717 - SC-001-A	Boiler Room	In room Hallway	Spigot on wall in Boiler Room next to toilet.	(Law)
10/17/17		4068 - 101717 -		In room Hallway		
10/17/17	0500	4068 - 101717 - DF-010-A	Girls R/B	In room Hallway	Upper (R) Elkay DF next to Girl's R/B	(Law)
10/17/17	0501	4068 - 101717 - DF-010-B	"	In room Hallway	" " Flush	(Law)
10/17/17	0505	4068 - 101717 - DF-007-A	Across from Rm 117	In room Hallway	Upper (R) Elkay to the (R) Jones/Hall Rm	(Law)
10/17/17	0506	4068 - 101717 - DF-007-B	↓	In room Hallway	" " Flush	(Law)
10/17/17		4068 - 101717 -		In room Hallway		
10/17/17		4068 - 101717 -		In room Hallway		
10/17/17		4068 - 101717 -		In room Hallway		
10/17/17		4068 - 101717 -		In room Hallway		

LOCATION TYPE: AF = athletic field; CS = cafeteria sink; DF = drinking fountain; IM = ice maker; KS = kindergarten sink; RS = restroom sink; SC = service connection; TL = teachers' lounge. SAMPLE TYPE: A = initial draw; B = flush; C = duplicate

ATTACHMENT B
AES Laboratory Analytical Report

Leona Miles

From: NoReply@aesatlanta.net
Sent: Tuesday, November 1, 2016 2:56 PM
To: leona-miles@aem-net.com; tim-royer@aem-net.com
Subject: DCSD - 4068
Attachments: 1610D49_REPORT.pdf; 1610D49Invoice.pdf

Please see attached. If you have any questions or need further assistance please contact your project manager at 770-457-8177.

AES Reporting System

ANALYTICAL ENVIRONMENTAL SERVICES, INC.
3080 Presidential Drive ATLANTA, GA 30340
Tel:770-457-8177 Fax:770-457-8188
<http://www.aesatlanta.com>

NOTICE OF CONFIDENTIALITY: The information in this email and / or attachments may be legally privileged and is confidential information intended for the use of the individual or entity named in the email address. If the reader of this message is not the intended recipient, you are hereby notified that any use, dissemination, distribution, or copy of this email and / or attachments is strictly prohibited. If you have received this email in error, please notify Analytical Environmental Services Customer Service by telephone at (770) 457-8177 or by email at info@aesatlanta.com <<mailto:info@aesatlanta.com>> and delete the message. Thank you



November 01, 2016

Leona Miles
Atlanta Environmental Mgmt
2580 NE Expressway
Atlanta GA 30345

TEL: (404) 329-9006
FAX: (404) 329-2057

RE: DCSD - 4068

Dear Leona Miles:

Order No: 1610D49

Analytical Environmental Services, Inc. received 56 samples on 10/18/2016 7:44:00 AM for the analyses presented in following report.

No problems were encountered during the analyses. Additionally, all results for the associated Quality Control samples were within EPA and/or AES established limits. Any discrepancies associated with the analyses contained herein will be noted and submitted in the form of a project Case Narrative.

AES's accreditations are as follows:

- NELAC/Florida State Laboratory ID E87582 for analysis of Non-Potable Water, Solid & Chemical Materials, and Drinking Water Microbiology, effective 07/01/16-06/30/17.
- NELAC/Louisiana Agency Interest No. 100818 for or analysis of Non-Potable Water and Solid & Chemical Materials, effective 07/01/16-06/30/17.
- NELAC/Texas Certificate No. T104704509-16-6 for or analysis of Non-Potable Water and Solid & Chemical Materials, effective 03/01/16-02/28/17.
- AIHA-LAP, LLC Laboratory ID: 100671 for Industrial Hygiene samples (Organics, Metals, PCM Asbestos, Gravimetric), Environmental Lead (Paint, Soil, Dust Wipes, Air), and Environmental Microbiology (Fungal) Direct Examination, effective until 09/01/17.

Ioana Pacurar
Project Manager



COMPANY:		ADDRESS:		ANALYSIS REQUESTED												Visit our website www.aesatlanta.com to check on the status of your results, place bottle orders, etc.		No # of Containers									
Atlanta Environmental Management, Inc		2580 Northeast Expressway, NE Atlanta, GA 30345		PRESERVATION (See codes)												REMARKS											
PHONE: (404) 329-9006		FAX: (404) 329-2057		Total Pb Method 200.8													I	II	III	IV	V	VI	VII	VIII	IX	X	XI
SAMPLED BY: <u>Andy Jensen</u>		SIGNATURE: <u>[Signature]</u>																									
#	SAMPLE ID	SAMPLED		Grab	Composite	Matrix (See codes)	I	II	III	IV	V	VI	VII	VIII	IX	X	XI	XII									
		DATE	TIME																								
1	4068-101816-DF-001-A ✓	10/18/2016	0533	X		DW	X																				
2	4068-101816-DF-001-B ✓	10/18/2016	0534	X		DW	X																				
3	4068-101816-DF-001-C ✓	10/18/2016	0535	X		DW	X																				
4	4068-101816-DF-002-A ✓	10/18/2016	0536	X		DW	X																				
5	4068-101816-DF-002-B ✓	10/18/2016	0537	X		DW	X																				
6	4068-101816-DF-003-A ✓	10/18/2016	0544	X		DW	X																				
7	4068-101816-DF-003-B ✓	10/18/2016	0545	X		DW	X																				
8	4068-101816-DF-004-A ✓	10/18/2016	0546	X		DW	X																				
9	4068-101816-DF-004-B ✓	10/18/2016	0547	X		DW	X																				
10	4068-101816-DF-005-A ✓	10/18/2016	0549	X		DW	X																				
11	4068-101816-DF-005-B ✓	10/18/2016	0500	X		DW	X																				
12	4068-101816-DF-006-A ✓	10/18/2016	0519	X		DW	X																				
13	4068-101816-DF-006-B ✓	10/18/2016	0520	X		DW	X																				
14	4068-101816-DF-007-A	10/18/2016		X		DW												Not Sampled, Not working									
15	4068-101816-DF-007-B	10/18/2016		X		DW												Not Sampled, Not working									

RELINQUISHED BY	DATE/TIME	RECEIVED BY	DATE/TIME	PROJECT INFORMATION				RECEIPT			
1: <u>[Signature]</u>	<u>10/18/16</u> <u>0744</u>	1: <u>[Signature]</u>	<u>10/18/16</u> <u>7:44 AM</u>	PROJECT NAME: DCSD				Total # of Containers			
2:		2:		PROJECT #: 1561-1601				Turnaround Time Request			
3:		3:		SITE ADDRESS: 4068				<input type="radio"/> Standard 5 Business Days <input type="radio"/> 2 Business Day Rush <input type="radio"/> Next Business Day Rush <input type="radio"/> Same Day Rush (auth req.) <input checked="" type="radio"/> Other: 10 business Days			
SPECIAL INSTRUCTIONS/COMMENTS: <u>Preserve at the Lab per protocol</u>		SHIPMENT METHOD OUT / / VIA: IN <input checked="" type="radio"/> <u>CLIENT</u> FedEx UPS MAIL COURIER GREYHOUND OTHER		SEND REPORT TO: Leona Miles and Tim Royer				STATE PROGRAM (if any): _____			
				INVOICE TO: (IF DIFFERENT FROM ABOVE) <u>leona-miles@aem-net.com; tim-royer@aem-net.com</u>				E-mail? Y/N; Fax? Y/N			
				QUOTE #: _____ PO#: _____				DATA PACKAGE: I II III IV			



ANALYTICAL ENVIRONMENTAL SERVICES, INC

3080 Presidential Drive, Atlanta GA 30340-3704

TEL.: (770) 457-8177 / TOLL-FREE (800) 972-4889 / FAX: (770) 457-8188

CHAIN OF CUSTODY

Work Order: 1010249

Date: 10/18/16 Page 2 of 4

COMPANY: Atlanta Environmental Management, Inc		ADDRESS: 2580 Northeast Expressway, NE Atlanta, GA 30345			ANALYSIS REQUESTED										Visit our website www.aesatlanta.com to check on the status of your results, place bottle orders, etc.		No # of Containers			
PHONE: (404) 329-9006		FAX: (404) 329-2057			PRESERVATION (See codes)										REMARKS					
SAMPLED BY: Andy Jensen		SIGNATURE: <i>[Signature]</i>			Total Pb Method 200.8															
#	SAMPLE ID	SAMPLED		Grab	Composite	Matrix (See codes)	PRESERVATION (See codes)										REMARKS			
		DATE	TIME				I													
1	4068-101816-DF-008-A ✓	10/18/2016	0536	X		DW	X													
2	4068-101816-DF-008-B ✓	10/18/2016	0537	X		DW	X													
3	4068-101816-DF-009-A ✓	10/18/2016	0525	X		DW	X													
4	4068-101816-DF-009-B ✓	10/18/2016	0526	X		DW	X													
5	4068-101816-DF-010-A	10/18/2016		X		DW														Not Sampled, Not working
6	4068-101816-DF-010-B	10/18/2016		X		DW														Not Sampled, Not working
7	4068-101816-DF-011-A ✓	10/18/2016	0544	X		DW	X													
8	4068-101816-DF-011-B ✓	10/18/2016	0545	X		DW	X													
9	4068-101816-DF-012-A ✓	10/18/2016	0546	X		DW	✓													
10	4068-101816-DF-012-B ✓	10/18/2016	0547	X		DW	X													
11	4068-101816-DF-013-A ✓	10/18/2016	0525	X		DW	X													
12	4068-101816-DF-013-B ✓	10/18/2016	0526	X		DW	X													
13	4068-101816-DF-014-A ✓	10/18/2016	0529	X		DW	X													
14	4068-101816-DF-014-B ✓	10/18/2016	0530	X		DW	X													
15	4068-101816-KS-001-A ✓	10/18/2016	0503	X		DW	X													
RELINQUISHED BY: <i>[Signature]</i>		DATE/TIME: 10/18/16 0744		RECEIVED BY: <i>[Signature]</i>		DATE/TIME: 10/18/16 7:44AM		PROJECT INFORMATION										RECEIPT		
1: <i>[Signature]</i>		2:		3:		PROJECT NAME: DCSD										Total # of Containers				
2: <i>[Signature]</i>		3:		PROJECT #: 1561-1601										Turnaround Time Request						
3: <i>[Signature]</i>		3:		SITE ADDRESS: 4068										<input type="radio"/> Standard 5 Business Days <input type="radio"/> 2 Business Day Rush <input type="radio"/> Next Business Day Rush <input type="radio"/> Same Day Rush (auth req.) <input checked="" type="radio"/> Other: 10 business Days						
SPECIAL INSTRUCTIONS/COMMENTS: Preserve at the Lab per protocol				SHIPMENT METHOD: OUT / / VIA: CLIENT FedEx UPS MAIL COURIER GREYHOUND OTHER				INVOICE TO: (IF DIFFERENT FROM ABOVE) leona-miles@aem-net.com; tim-royer@aem-net.com				STATE PROGRAM (if any):								
								QUOTE #: _____ PO#: _____				E-mail? Y/N; Fax? Y/N DATA PACKAGE: I II III IV								

SAMPLES RECEIVED AFTER 3PM OR SATURDAY ARE CONSIDERED AS RECEIVED ON THE NEXT BUSINESS DAY; IF NO TAT IS MARKED ON COC AES WILL PROCEED AS STANDARD TAT. SAMPLES ARE DISPOSED OF 30 DAYS AFTER COMPLETION OF REPORT UNLESS OTHER ARRANGEMENTS ARE MADE.



ANALYTICAL ENVIRONMENTAL SERVICES, INC

3080 Presidential Drive, Atlanta GA 30340-3704

TEL.: (770) 457-8177 / TOLL-FREE (800) 972-4889 / FAX: (770) 457-8188

CHAIN OF CUSTODY

Work Order: 1110249

Date: 10/18/16 Page 3 of 4

COMPANY: Atlanta Environmental Management, Inc		ADDRESS: 2580 Northeast Expressway, NE Atlanta, GA 30345					ANALYSIS REQUESTED										Visit our website www.aesatlanta.com to check on the status of your results, place bottle orders, etc.		No # of Containers																																										
PHONE: (404) 329-9006		FAX: (404) 329-2057					<table border="1"> <tr><td>Total Pb Method 200.8</td><td></td><td></td><td></td><td></td><td></td><td></td><td></td><td></td><td></td><td></td><td></td><td></td><td></td><td></td><td></td><td></td><td></td><td></td><td></td><td></td></tr> <tr><td></td><td></td><td></td><td></td><td></td><td></td><td></td><td></td><td></td><td></td><td></td><td></td><td></td><td></td><td></td><td></td><td></td><td></td><td></td><td></td><td></td></tr> </table>													Total Pb Method 200.8																																									
Total Pb Method 200.8																																																													
SAMPLED BY: <i>Andy Jensen</i>		SIGNATURE: <i>[Signature]</i>					PRESERVATION (See codes)										REMARKS																																												
#	SAMPLE ID	SAMPLED		Grab	Composite	Matrix (See codes)											REMARKS																																												
		DATE	TIME				I																																																						
1	4068-101816-KS-001-B ✓	10/18/2016	0504	X		DW	X																																																						
2	4068-101816-KS-002-A ✓	10/18/2016	0509	X		DW	X																																																						
3	4068-101816-KS-002-B ✓	10/18/2016	0510	X		DW	X																																																						
4	4068-101816-KS-003-A ✓	10/18/2016	0515	X		DW	X																																																						
5	4068-101816-KS-003-B ✓	10/18/2016	0516	X		DW	X																																																						
6	4068-101816-KS-004-A ✓	10/18/2016	0525	X		DW	X																																																						
7	4068-101816-KS-004-B ✓	10/18/2016	0526	X		DW	X																																																						
8	4068-101816-KS-005-A ✓	10/18/2016	0534	X		DW	X																																																						
9	4068-101816-KS-005-B ✓	10/18/2016	0535	X		DW	X																																																						
10	4068-101816-KS-006-A ✓	10/18/2016	0530	X		DW	X																																																						
11	4068-101816-KS-006-B ✓	10/18/2016	0532	X		DW	X																																																						
12	4068-101816-KS-006-C ✓	10/18/2016	0531	X		DW	X																																																						
13	4068-101816-KS-007-A ✓	10/18/2016	0458	X		DW	X																																																						
14	4068-101816-KS-007-B ✓	10/18/2016	0459	X		DW	X																																																						
15	4068-101816-KS-008-A ✓	10/18/2016	0503	X		DW	X																																																						
RELINQUISHED BY		DATE/TIME		RECEIVED BY		DATE/TIME		PROJECT INFORMATION										RECEIPT																																											
1: <i>[Signature]</i>		10/18/16 0744		1: <i>[Signature]</i>		10/18/16 7:44 AM		PROJECT NAME: DCSD										Total # of Containers																																											
2:				2:				PROJECT #: 1561-1601										Turnaround Time Request																																											
3:				3:				SITE ADDRESS: 4068										Standard 5 Business Days																																											
								SEND REPORT TO: Leona Miles and Tim Royer										2 Business Day Rush																																											
SPECIAL INSTRUCTIONS/COMMENTS:				SHIPMENT METHOD				INVOICE TO:										Next Business Day Rush																																											
Preserve at the Lab per protocol				OUT / / VIA:				(IF DIFFERENT FROM ABOVE)										Same Day Rush (auth req.)																																											
				IN / / VIA:				leona-miles@aem-net.com; tim-royer@aem-net.com										Other: 10 business Days																																											
				CLIENT FedEx UPS MAIL COURIER				QUOTE #:										STATE PROGRAM (if any):																																											
				GREYHOUND OTHER				PO#:										E-mail? Y/N; Fax? Y/N																																											
																		DATA PACKAGE: I II III IV																																											

SAMPLES RECEIVED AFTER 3PM OR SATURDAY ARE CONSIDERED AS RECEIVED ON THE NEXT BUSINESS DAY; IF NO TAT IS MARKED ON COC AES WILL PROCEED AS STANDARD TAT. SAMPLES ARE DISPOSED OF 30 DAYS AFTER COMPLETION OF REPORT UNLESS OTHER ARRANGEMENTS ARE MADE.

MATRIX CODES: A = Air GW = Groundwater SE = Sediment SO = Soil SW = Surface Water DW=Drinking Water W = Water (Blanks) O = Other (specify) PRESERVATIVE CODES: H+I = Hydrochloric acid + ice I = Ice only N = Nitric acid S+I = Sulfuric acid + ice S/M+I = Sodium Bisulfate/Methanol + ice O = Other (specify) NA = None



COMPANY: Atlanta Environmental Management, Inc			ADDRESS: 2580 Northeast Expressway, NE Atlanta, GA 30345			ANALYSIS REQUESTED										Visit our website www.aesatlanta.com to check on the status of your results, place bottle orders, etc.	No # of Containers																																																														
PHONE: (404) 329-9006			FAX: (404) 329-2057			<table border="1" style="width:100%; height: 100%; border-collapse: collapse;"> <tr> <td style="writing-mode: vertical-rl; transform: rotate(180deg);">Total Pb Method 200.8</td> <td></td><td></td><td></td><td></td><td></td><td></td><td></td><td></td><td></td><td></td><td></td><td></td><td></td><td></td><td></td><td></td><td></td><td></td><td></td><td></td> </tr> <tr> <td colspan="20" style="text-align: center;">PRESERVATION (See codes)</td> </tr> <tr> <td></td><td></td><td></td><td></td><td></td><td></td><td></td><td></td><td></td><td></td><td></td><td></td><td></td><td></td><td></td><td></td><td></td><td></td><td></td><td></td><td></td> </tr> </table>												Total Pb Method 200.8																					PRESERVATION (See codes)																																								
Total Pb Method 200.8																																																																															
PRESERVATION (See codes)																																																																															
SAMPLED BY: <i>Andy Jansen</i>			SIGNATURE: <i>AJ</i>																																																																												
#	SAMPLE ID	SAMPLED		Grab	Composite	Matrix (See codes)											REMARKS																																																														
		DATE	TIME				I																																																																								
1	4068-101816-KS-008-B ✓	10/18/2016	0504	X		DW	X																																																																								
2	4068-101816-KS-009-A ✓	10/18/2016	0509	X		DW	X																																																																								
3	4068-101816-KS-009-B ✓	10/18/2016	0510	X		DW	X																																																																								
4	4068-101816-KS-010-A ✓	10/18/2016	0513	X		DW	X																																																																								
5	4068-101816-KS-010-B ✓	10/18/2016	0514	X		DW	X																																																																								
6	4068-101816-RS-001-A ✓	10/18/2016	0521	X		DW	X																																																																								
7	4068-101816-RS-001-B ✓	10/18/2016	0522	X		DW	X																																																																								
8	4068-101816-TL-001-A ✓	10/18/2016	0455	X		DW	X																																																																								
9	4068-101816-TL-001-B ✓	10/18/2016	0456	X		DW	X																																																																								
10	4068-101816-CS-001-A ✓	10/18/2016	0456	X		DW	X																																																																								
11	4068-101816-CS-001-B ✓	10/18/2016	0457	X		DW	X																																																																								
12	4068-101816-IM-001-A ✓	10/18/2016	0500	X		DW	X																																																																								
13	4068-101816-SC-001-A ✓	10/18/2016	0548	X		DW	X																																																																								
14	4068-101816-DF-015-A ✓	10/18/16	0515	X		DW	X																																																																								
15	4068-101816-DF-015-B ✓	10/18/16	0516	X		DW	X																																																																								

RELINQUISHED BY 1: <i>AJ</i> 10/18/16 0744		RECEIVED BY 1: <i>Monica Jansen</i> 10/18/16 7:44AM		PROJECT INFORMATION			RECEIPT			
2:		2:		PROJECT NAME: DCSD			Total # of Containers			
3:		3:		PROJECT #: 1561-1601			<input type="radio"/> Turnaround Time Request <input type="radio"/> Standard 5 Business Days <input type="radio"/> 2 Business Day Rush <input type="radio"/> Next Business Day Rush <input checked="" type="radio"/> Same Day Rush (auth req.) <input type="radio"/> Other: 10 business Days			
SPECIAL INSTRUCTIONS/COMMENTS: Preserve at the Lab per protocol				SITE ADDRESS: 4068					STATE PROGRAM (if any): _____	
				SEND REPORT TO: Leona Miles and Tim Royer					E-mail? Y / N; Fax? Y / N	
				INVOICE TO: (IF DIFFERENT FROM ABOVE) leona-miles@aem-net.com; tim-royer@aem-net.com			DATA PACKAGE: I II III IV			
				QUOTE #: _____ PO#: _____						
				SHIPMENT METHOD						
				OUT / / VIA:						
				IN / / VIA:						
				<input type="radio"/> CLIENT FedEx UPS MAIL COURIER <input checked="" type="radio"/> GREYHOUND OTHER _____						

SAMPLES RECEIVED AFTER 3PM OR SATURDAY ARE CONSIDERED AS RECEIVED ON THE NEXT BUSINESS DAY; IF NO TAT IS MARKED ON COC AES WILL PROCEED AS STANDARD TAT.
 SAMPLES ARE DISPOSED OF 30 DAYS AFTER COMPLETION OF REPORT UNLESS OTHER ARRANGEMENTS ARE MADE.

Analytical Environmental Services, Inc

Date: 1-Nov-16

Client: Atlanta Environmental Mgmt	Client Sample ID: 4068-101816-DF-001-A
Project Name: DCSD - 4068	Collection Date: 10/18/2016 5:33:00 AM
Lab ID: 1610D49-001	Matrix: Drinking Water

Analyses	Result	Reporting Limit	Qual	Units	BatchID	Dilution Factor	Date Analyzed	Analyst
Trace Elements by ICP/MS E200.8								
				(E200.2)				
Lead	BRL	1.00		ug/L	231673	1	10/26/2016 22:31	JR

Qualifiers:

- * Value exceeds maximum contaminant level
- BRL Below reporting limit
- H Holding times for preparation or analysis exceeded
- N Analyte not NELAC certified
- B Analyte detected in the associated method blank
- > Greater than Result value

- E Estimated (value above quantitation range)
- S Spike Recovery outside limits due to matrix
- Narr See case narrative
- NC Not confirmed
- < Less than Result value
- J Estimated value detected below Reporting Limit

Analytical Environmental Services, Inc

Date: 1-Nov-16

Client: Atlanta Environmental Mgmt	Client Sample ID: 4068-101816-DF-001-B
Project Name: DCSD - 4068	Collection Date: 10/18/2016 5:34:00 AM
Lab ID: 1610D49-002	Matrix: Drinking Water

Analyses	Result	Reporting Limit	Qual	Units	BatchID	Dilution Factor	Date Analyzed	Analyst
Trace Elements by ICP/MS E200.8					(E200.2)			
Lead	BRL	1.00		ug/L	231673	1	10/26/2016 22:52	JR

Qualifiers:

- * Value exceeds maximum contaminant level
- BRL Below reporting limit
- H Holding times for preparation or analysis exceeded
- N Analyte not NELAC certified
- B Analyte detected in the associated method blank
- > Greater than Result value

- E Estimated (value above quantitation range)
- S Spike Recovery outside limits due to matrix
- Narr See case narrative
- NC Not confirmed
- < Less than Result value
- J Estimated value detected below Reporting Limit

Analytical Environmental Services, Inc

Date: 1-Nov-16

Client: Atlanta Environmental Mgmt	Client Sample ID: 4068-101816-DF-001-C
Project Name: DCSD - 4068	Collection Date: 10/18/2016 5:35:00 AM
Lab ID: 1610D49-003	Matrix: Drinking Water

Analyses	Result	Reporting Limit	Qual	Units	BatchID	Dilution Factor	Date Analyzed	Analyst
Trace Elements by ICP/MS E200.8					(E200.2)			
Lead	BRL	1.00		ug/L	231673	1	10/26/2016 22:55	JR

Qualifiers:

- * Value exceeds maximum contaminant level
- BRL Below reporting limit
- H Holding times for preparation or analysis exceeded
- N Analyte not NELAC certified
- B Analyte detected in the associated method blank
- > Greater than Result value

- E Estimated (value above quantitation range)
- S Spike Recovery outside limits due to matrix
- Narr See case narrative
- NC Not confirmed
- < Less than Result value
- J Estimated value detected below Reporting Limit

Analytical Environmental Services, Inc

Date: 1-Nov-16

Client: Atlanta Environmental Mgmt	Client Sample ID: 4068-101816-DF-002-A
Project Name: DCSD - 4068	Collection Date: 10/18/2016 5:36:00 AM
Lab ID: 1610D49-004	Matrix: Drinking Water

Analyses	Result	Reporting Limit	Qual	Units	BatchID	Dilution Factor	Date Analyzed	Analyst
Trace Elements by ICP/MS E200.8					(E200.2)			
Lead	BRL	1.00		ug/L	231673	1	10/26/2016 22:58	JR

Qualifiers:

- * Value exceeds maximum contaminant level
- BRL Below reporting limit
- H Holding times for preparation or analysis exceeded
- N Analyte not NELAC certified
- B Analyte detected in the associated method blank
- > Greater than Result value

- E Estimated (value above quantitation range)
- S Spike Recovery outside limits due to matrix
- Narr See case narrative
- NC Not confirmed
- < Less than Result value
- J Estimated value detected below Reporting Limit

Analytical Environmental Services, Inc

Date: 1-Nov-16

Client: Atlanta Environmental Mgmt	Client Sample ID: 4068-101816-DF-002-B
Project Name: DCSD - 4068	Collection Date: 10/18/2016 5:37:00 AM
Lab ID: 1610D49-005	Matrix: Drinking Water

Analyses	Result	Reporting Limit	Qual	Units	BatchID	Dilution Factor	Date Analyzed	Analyst
Trace Elements by ICP/MS E200.8					(E200.2)			
Lead	BRL	1.00		ug/L	231673	1	10/26/2016 23:01	JR

Qualifiers:

- * Value exceeds maximum contaminant level
- BRL Below reporting limit
- H Holding times for preparation or analysis exceeded
- N Analyte not NELAC certified
- B Analyte detected in the associated method blank
- > Greater than Result value

- E Estimated (value above quantitation range)
- S Spike Recovery outside limits due to matrix
- Narr See case narrative
- NC Not confirmed
- < Less than Result value
- J Estimated value detected below Reporting Limit

Analytical Environmental Services, Inc

Date: 1-Nov-16

Client: Atlanta Environmental Mgmt	Client Sample ID: 4068-101816-DF-003-A
Project Name: DCSD - 4068	Collection Date: 10/18/2016 5:44:00 AM
Lab ID: 1610D49-006	Matrix: Drinking Water

Analyses	Result	Reporting Limit	Qual	Units	BatchID	Dilution Factor	Date Analyzed	Analyst
Trace Elements by ICP/MS E200.8								
				(E200.2)				
Lead	BRL	1.00		ug/L	231673	1	10/26/2016 23:04	JR

Qualifiers:

- * Value exceeds maximum contaminant level
- BRL Below reporting limit
- H Holding times for preparation or analysis exceeded
- N Analyte not NELAC certified
- B Analyte detected in the associated method blank
- > Greater than Result value

- E Estimated (value above quantitation range)
- S Spike Recovery outside limits due to matrix
- Narr See case narrative
- NC Not confirmed
- < Less than Result value
- J Estimated value detected below Reporting Limit

Analytical Environmental Services, Inc

Date: 1-Nov-16

Client: Atlanta Environmental Mgmt	Client Sample ID: 4068-101816-DF-003-B
Project Name: DCSD - 4068	Collection Date: 10/18/2016 5:45:00 AM
Lab ID: 1610D49-007	Matrix: Drinking Water

Analyses	Result	Reporting Limit	Qual	Units	BatchID	Dilution Factor	Date Analyzed	Analyst
Trace Elements by ICP/MS E200.8					(E200.2)			
Lead	BRL	1.00		ug/L	231673	1	10/26/2016 23:07	JR

Qualifiers:

- * Value exceeds maximum contaminant level
- BRL Below reporting limit
- H Holding times for preparation or analysis exceeded
- N Analyte not NELAC certified
- B Analyte detected in the associated method blank
- > Greater than Result value

- E Estimated (value above quantitation range)
- S Spike Recovery outside limits due to matrix
- Narr See case narrative
- NC Not confirmed
- < Less than Result value
- J Estimated value detected below Reporting Limit

Analytical Environmental Services, Inc

Date: 1-Nov-16

Client: Atlanta Environmental Mgmt	Client Sample ID: 4068-101816-DF-004-A
Project Name: DCSD - 4068	Collection Date: 10/18/2016 5:46:00 AM
Lab ID: 1610D49-008	Matrix: Drinking Water

Analyses	Result	Reporting Limit	Qual	Units	BatchID	Dilution Factor	Date Analyzed	Analyst
Trace Elements by ICP/MS E200.8					(E200.2)			
Lead	BRL	1.00		ug/L	231673	1	10/26/2016 23:10	JR

Qualifiers:

- * Value exceeds maximum contaminant level
- BRL Below reporting limit
- H Holding times for preparation or analysis exceeded
- N Analyte not NELAC certified
- B Analyte detected in the associated method blank
- > Greater than Result value

- E Estimated (value above quantitation range)
- S Spike Recovery outside limits due to matrix
- Narr See case narrative
- NC Not confirmed
- < Less than Result value
- J Estimated value detected below Reporting Limit

Analytical Environmental Services, Inc

Date: 1-Nov-16

Client: Atlanta Environmental Mgmt	Client Sample ID: 4068-101816-DF-004-B
Project Name: DCSD - 4068	Collection Date: 10/18/2016 5:47:00 AM
Lab ID: 1610D49-009	Matrix: Drinking Water

Analyses	Result	Reporting Limit	Qual	Units	BatchID	Dilution Factor	Date Analyzed	Analyst
Trace Elements by ICP/MS E200.8					(E200.2)			
Lead	BRL	1.00		ug/L	231673	1	10/26/2016 23:20	JR

Qualifiers:

- * Value exceeds maximum contaminant level
- BRL Below reporting limit
- H Holding times for preparation or analysis exceeded
- N Analyte not NELAC certified
- B Analyte detected in the associated method blank
- > Greater than Result value

- E Estimated (value above quantitation range)
- S Spike Recovery outside limits due to matrix
- Narr See case narrative
- NC Not confirmed
- < Less than Result value
- J Estimated value detected below Reporting Limit

Analytical Environmental Services, Inc

Date: 1-Nov-16

Client: Atlanta Environmental Mgmt	Client Sample ID: 4068-101816-DF-005-A
Project Name: DCSD - 4068	Collection Date: 10/18/2016 4:59:00 AM
Lab ID: 1610D49-010	Matrix: Drinking Water

Analyses	Result	Reporting Limit	Qual	Units	BatchID	Dilution Factor	Date Analyzed	Analyst
Trace Elements by ICP/MS E200.8					(E200.2)			
Lead	BRL	1.00		ug/L	231673	1	10/26/2016 23:23	JR

Qualifiers:

- * Value exceeds maximum contaminant level
- BRL Below reporting limit
- H Holding times for preparation or analysis exceeded
- N Analyte not NELAC certified
- B Analyte detected in the associated method blank
- > Greater than Result value

- E Estimated (value above quantitation range)
- S Spike Recovery outside limits due to matrix
- Narr See case narrative
- NC Not confirmed
- < Less than Result value
- J Estimated value detected below Reporting Limit

Analytical Environmental Services, Inc

Date: 1-Nov-16

Client: Atlanta Environmental Mgmt	Client Sample ID: 4068-101816-DF-005-B
Project Name: DCSD - 4068	Collection Date: 10/18/2016 5:00:00 AM
Lab ID: 1610D49-011	Matrix: Drinking Water

Analyses	Result	Reporting Limit	Qual	Units	BatchID	Dilution Factor	Date Analyzed	Analyst
Trace Elements by ICP/MS E200.8					(E200.2)			
Lead	BRL	1.00		ug/L	231673	1	10/26/2016 22:46	JR

Qualifiers:

- * Value exceeds maximum contaminant level
- BRL Below reporting limit
- H Holding times for preparation or analysis exceeded
- N Analyte not NELAC certified
- B Analyte detected in the associated method blank
- > Greater than Result value

- E Estimated (value above quantitation range)
- S Spike Recovery outside limits due to matrix
- Narr See case narrative
- NC Not confirmed
- < Less than Result value
- J Estimated value detected below Reporting Limit

Analytical Environmental Services, Inc

Date: 1-Nov-16

Client: Atlanta Environmental Mgmt	Client Sample ID: 4068-101816-DF-006-A
Project Name: DCSD - 4068	Collection Date: 10/18/2016 5:19:00 AM
Lab ID: 1610D49-012	Matrix: Drinking Water

Analyses	Result	Reporting Limit	Qual	Units	BatchID	Dilution Factor	Date Analyzed	Analyst
Trace Elements by ICP/MS E200.8					(E200.2)			
Lead	BRL	1.00		ug/L	231673	1	10/26/2016 23:26	JR

Qualifiers:

- * Value exceeds maximum contaminant level
- BRL Below reporting limit
- H Holding times for preparation or analysis exceeded
- N Analyte not NELAC certified
- B Analyte detected in the associated method blank
- > Greater than Result value

- E Estimated (value above quantitation range)
- S Spike Recovery outside limits due to matrix
- Narr See case narrative
- NC Not confirmed
- < Less than Result value
- J Estimated value detected below Reporting Limit

Analytical Environmental Services, Inc

Date: 1-Nov-16

Client: Atlanta Environmental Mgmt	Client Sample ID: 4068-101816-DF-006-B
Project Name: DCSD - 4068	Collection Date: 10/18/2016 5:20:00 AM
Lab ID: 1610D49-013	Matrix: Drinking Water

Analyses	Result	Reporting Limit	Qual	Units	BatchID	Dilution Factor	Date Analyzed	Analyst
Trace Elements by ICP/MS E200.8					(E200.2)			
Lead	BRL	1.00		ug/L	231673	1	10/26/2016 23:29	JR

Qualifiers:

- * Value exceeds maximum contaminant level
- BRL Below reporting limit
- H Holding times for preparation or analysis exceeded
- N Analyte not NELAC certified
- B Analyte detected in the associated method blank
- > Greater than Result value

- E Estimated (value above quantitation range)
- S Spike Recovery outside limits due to matrix
- Narr See case narrative
- NC Not confirmed
- < Less than Result value
- J Estimated value detected below Reporting Limit

Analytical Environmental Services, Inc

Date: 1-Nov-16

Client: Atlanta Environmental Mgmt	Client Sample ID: 4068-101816-DF-008-A
Project Name: DCSD - 4068	Collection Date: 10/18/2016 5:36:00 AM
Lab ID: 1610D49-014	Matrix: Drinking Water

Analyses	Result	Reporting Limit	Qual	Units	BatchID	Dilution Factor	Date Analyzed	Analyst
Trace Elements by ICP/MS E200.8					(E200.2)			
Lead	BRL	1.00		ug/L	231673	1	10/26/2016 23:32	JR

Qualifiers:

- * Value exceeds maximum contaminant level
- BRL Below reporting limit
- H Holding times for preparation or analysis exceeded
- N Analyte not NELAC certified
- B Analyte detected in the associated method blank
- > Greater than Result value

- E Estimated (value above quantitation range)
- S Spike Recovery outside limits due to matrix
- Narr See case narrative
- NC Not confirmed
- < Less than Result value
- J Estimated value detected below Reporting Limit

Analytical Environmental Services, Inc

Date: 1-Nov-16

Client: Atlanta Environmental Mgmt	Client Sample ID: 4068-101816-DF-008-B
Project Name: DCSD - 4068	Collection Date: 10/18/2016 5:37:00 AM
Lab ID: 1610D49-015	Matrix: Drinking Water

Analyses	Result	Reporting Limit	Qual	Units	BatchID	Dilution Factor	Date Analyzed	Analyst
Trace Elements by ICP/MS E200.8					(E200.2)			
Lead	BRL	1.00		ug/L	231673	1	10/26/2016 23:35	JR

Qualifiers:

- * Value exceeds maximum contaminant level
- BRL Below reporting limit
- H Holding times for preparation or analysis exceeded
- N Analyte not NELAC certified
- B Analyte detected in the associated method blank
- > Greater than Result value

- E Estimated (value above quantitation range)
- S Spike Recovery outside limits due to matrix
- Narr See case narrative
- NC Not confirmed
- < Less than Result value
- J Estimated value detected below Reporting Limit

Analytical Environmental Services, Inc

Date: 1-Nov-16

Client: Atlanta Environmental Mgmt	Client Sample ID: 4068-101816-DF-009-A
Project Name: DCSD - 4068	Collection Date: 10/18/2016 5:25:00 AM
Lab ID: 1610D49-016	Matrix: Drinking Water

Analyses	Result	Reporting Limit	Qual	Units	BatchID	Dilution Factor	Date Analyzed	Analyst
Trace Elements by ICP/MS E200.8					(E200.2)			
Lead	BRL	1.00		ug/L	231673	1	10/26/2016 23:38	JR

Qualifiers:

- * Value exceeds maximum contaminant level
- BRL Below reporting limit
- H Holding times for preparation or analysis exceeded
- N Analyte not NELAC certified
- B Analyte detected in the associated method blank
- > Greater than Result value

- E Estimated (value above quantitation range)
- S Spike Recovery outside limits due to matrix
- Narr See case narrative
- NC Not confirmed
- < Less than Result value
- J Estimated value detected below Reporting Limit

Analytical Environmental Services, Inc

Date: 1-Nov-16

Client: Atlanta Environmental Mgmt	Client Sample ID: 4068-101816-DF-009-B
Project Name: DCSD - 4068	Collection Date: 10/18/2016 5:26:00 AM
Lab ID: 1610D49-017	Matrix: Drinking Water

Analyses	Result	Reporting Limit	Qual	Units	BatchID	Dilution Factor	Date Analyzed	Analyst
Trace Elements by ICP/MS E200.8					(E200.2)			
Lead	BRL	1.00		ug/L	231673	1	10/26/2016 23:41	JR

Qualifiers:

- * Value exceeds maximum contaminant level
- BRL Below reporting limit
- H Holding times for preparation or analysis exceeded
- N Analyte not NELAC certified
- B Analyte detected in the associated method blank
- > Greater than Result value

- E Estimated (value above quantitation range)
- S Spike Recovery outside limits due to matrix
- Narr See case narrative
- NC Not confirmed
- < Less than Result value
- J Estimated value detected below Reporting Limit

Analytical Environmental Services, Inc

Date: 1-Nov-16

Client: Atlanta Environmental Mgmt	Client Sample ID: 4068-101816-DF-011-A
Project Name: DCSD - 4068	Collection Date: 10/18/2016 5:44:00 AM
Lab ID: 1610D49-018	Matrix: Drinking Water

Analyses	Result	Reporting Limit	Qual	Units	BatchID	Dilution Factor	Date Analyzed	Analyst
Trace Elements by ICP/MS E200.8					(E200.2)			
Lead	BRL	1.00		ug/L	231673	1	10/26/2016 23:44	JR

Qualifiers:

- * Value exceeds maximum contaminant level
- BRL Below reporting limit
- H Holding times for preparation or analysis exceeded
- N Analyte not NELAC certified
- B Analyte detected in the associated method blank
- > Greater than Result value

- E Estimated (value above quantitation range)
- S Spike Recovery outside limits due to matrix
- Narr See case narrative
- NC Not confirmed
- < Less than Result value
- J Estimated value detected below Reporting Limit

Analytical Environmental Services, Inc

Date: 1-Nov-16

Client: Atlanta Environmental Mgmt	Client Sample ID: 4068-101816-DF-011-B
Project Name: DCSD - 4068	Collection Date: 10/18/2016 5:45:00 AM
Lab ID: 1610D49-019	Matrix: Drinking Water

Analyses	Result	Reporting Limit	Qual	Units	BatchID	Dilution Factor	Date Analyzed	Analyst
Trace Elements by ICP/MS E200.8					(E200.2)			
Lead	BRL	1.00		ug/L	231673	1	10/26/2016 23:47	JR

Qualifiers:

- * Value exceeds maximum contaminant level
- BRL Below reporting limit
- H Holding times for preparation or analysis exceeded
- N Analyte not NELAC certified
- B Analyte detected in the associated method blank
- > Greater than Result value

- E Estimated (value above quantitation range)
- S Spike Recovery outside limits due to matrix
- Narr See case narrative
- NC Not confirmed
- < Less than Result value
- J Estimated value detected below Reporting Limit

Analytical Environmental Services, Inc

Date: 1-Nov-16

Client: Atlanta Environmental Mgmt	Client Sample ID: 4068-101816-DF-012-A
Project Name: DCSD - 4068	Collection Date: 10/18/2016 5:46:00 AM
Lab ID: 1610D49-020	Matrix: Drinking Water

Analyses	Result	Reporting Limit	Qual	Units	BatchID	Dilution Factor	Date Analyzed	Analyst
Trace Elements by ICP/MS E200.8					(E200.2)			
Lead	BRL	1.00		ug/L	231673	1	10/26/2016 23:56	JR

Qualifiers:

- * Value exceeds maximum contaminant level
- BRL Below reporting limit
- H Holding times for preparation or analysis exceeded
- N Analyte not NELAC certified
- B Analyte detected in the associated method blank
- > Greater than Result value

- E Estimated (value above quantitation range)
- S Spike Recovery outside limits due to matrix
- Narr See case narrative
- NC Not confirmed
- < Less than Result value
- J Estimated value detected below Reporting Limit

Analytical Environmental Services, Inc

Date: 1-Nov-16

Client: Atlanta Environmental Mgmt	Client Sample ID: 4068-101816-DF-012-B
Project Name: DCSD - 4068	Collection Date: 10/18/2016 5:47:00 AM
Lab ID: 1610D49-021	Matrix: Drinking Water

Analyses	Result	Reporting Limit	Qual	Units	BatchID	Dilution Factor	Date Analyzed	Analyst
Trace Elements by ICP/MS E200.8					(E200.2)			
Lead	BRL	1.00		ug/L	231811	1	10/27/2016 17:40	JR

Qualifiers:

- * Value exceeds maximum contaminant level
- BRL Below reporting limit
- H Holding times for preparation or analysis exceeded
- N Analyte not NELAC certified
- B Analyte detected in the associated method blank
- > Greater than Result value

- E Estimated (value above quantitation range)
- S Spike Recovery outside limits due to matrix
- Narr See case narrative
- NC Not confirmed
- < Less than Result value
- J Estimated value detected below Reporting Limit

Analytical Environmental Services, Inc

Date: 1-Nov-16

Client: Atlanta Environmental Mgmt	Client Sample ID: 4068-101816-DF-013-A
Project Name: DCSD - 4068	Collection Date: 10/18/2016 5:25:00 AM
Lab ID: 1610D49-022	Matrix: Drinking Water

Analyses	Result	Reporting Limit	Qual	Units	BatchID	Dilution Factor	Date Analyzed	Analyst
Trace Elements by ICP/MS E200.8					(E200.2)			
Lead	BRL	1.00		ug/L	231811	1	10/27/2016 18:06	JR

Qualifiers:

- * Value exceeds maximum contaminant level
- BRL Below reporting limit
- H Holding times for preparation or analysis exceeded
- N Analyte not NELAC certified
- B Analyte detected in the associated method blank
- > Greater than Result value

- E Estimated (value above quantitation range)
- S Spike Recovery outside limits due to matrix
- Narr See case narrative
- NC Not confirmed
- < Less than Result value
- J Estimated value detected below Reporting Limit

Analytical Environmental Services, Inc

Date: 1-Nov-16

Client: Atlanta Environmental Mgmt	Client Sample ID: 4068-101816-DF-013-B
Project Name: DCSD - 4068	Collection Date: 10/18/2016 5:26:00 AM
Lab ID: 1610D49-023	Matrix: Drinking Water

Analyses	Result	Reporting Limit	Qual	Units	BatchID	Dilution Factor	Date Analyzed	Analyst
Trace Elements by ICP/MS E200.8					(E200.2)			
Lead	BRL	1.00		ug/L	231811	1	10/27/2016 18:32	JR

Qualifiers:

- * Value exceeds maximum contaminant level
- BRL Below reporting limit
- H Holding times for preparation or analysis exceeded
- N Analyte not NELAC certified
- B Analyte detected in the associated method blank
- > Greater than Result value

- E Estimated (value above quantitation range)
- S Spike Recovery outside limits due to matrix
- Narr See case narrative
- NC Not confirmed
- < Less than Result value
- J Estimated value detected below Reporting Limit

Analytical Environmental Services, Inc

Date: 1-Nov-16

Client: Atlanta Environmental Mgmt	Client Sample ID: 4068-101816-DF-014-A
Project Name: DCSD - 4068	Collection Date: 10/18/2016 5:29:00 AM
Lab ID: 1610D49-024	Matrix: Drinking Water

Analyses	Result	Reporting Limit	Qual	Units	BatchID	Dilution Factor	Date Analyzed	Analyst
Trace Elements by ICP/MS E200.8					(E200.2)			
Lead	BRL	1.00		ug/L	231811	1	10/27/2016 18:36	JR

Qualifiers:

- * Value exceeds maximum contaminant level
- BRL Below reporting limit
- H Holding times for preparation or analysis exceeded
- N Analyte not NELAC certified
- B Analyte detected in the associated method blank
- > Greater than Result value

- E Estimated (value above quantitation range)
- S Spike Recovery outside limits due to matrix
- Narr See case narrative
- NC Not confirmed
- < Less than Result value
- J Estimated value detected below Reporting Limit

Analytical Environmental Services, Inc

Date: 1-Nov-16

Client: Atlanta Environmental Mgmt	Client Sample ID: 4068-101816-DF-014-B
Project Name: DCSD - 4068	Collection Date: 10/18/2016 5:30:00 AM
Lab ID: 1610D49-025	Matrix: Drinking Water

Analyses	Result	Reporting Limit	Qual	Units	BatchID	Dilution Factor	Date Analyzed	Analyst
Trace Elements by ICP/MS E200.8					(E200.2)			
Lead	BRL	1.00		ug/L	231811	1	10/27/2016 18:41	JR

Qualifiers:

- * Value exceeds maximum contaminant level
- BRL Below reporting limit
- H Holding times for preparation or analysis exceeded
- N Analyte not NELAC certified
- B Analyte detected in the associated method blank
- > Greater than Result value

- E Estimated (value above quantitation range)
- S Spike Recovery outside limits due to matrix
- Narr See case narrative
- NC Not confirmed
- < Less than Result value
- J Estimated value detected below Reporting Limit

Analytical Environmental Services, Inc

Date: 1-Nov-16

Client: Atlanta Environmental Mgmt	Client Sample ID: 4068-101816-KS-001-A
Project Name: DCSD - 4068	Collection Date: 10/18/2016 5:03:00 AM
Lab ID: 1610D49-026	Matrix: Drinking Water

Analyses	Result	Reporting Limit	Qual	Units	BatchID	Dilution Factor	Date Analyzed	Analyst
Trace Elements by ICP/MS E200.8					(E200.2)			
Lead	BRL	1.00		ug/L	231811	1	10/27/2016 18:45	JR

Qualifiers:

- * Value exceeds maximum contaminant level
- BRL Below reporting limit
- H Holding times for preparation or analysis exceeded
- N Analyte not NELAC certified
- B Analyte detected in the associated method blank
- > Greater than Result value

- E Estimated (value above quantitation range)
- S Spike Recovery outside limits due to matrix
- Narr See case narrative
- NC Not confirmed
- < Less than Result value
- J Estimated value detected below Reporting Limit

Analytical Environmental Services, Inc

Date: 1-Nov-16

Client: Atlanta Environmental Mgmt	Client Sample ID: 4068-101816-KS-001-B
Project Name: DCSD - 4068	Collection Date: 10/18/2016 5:04:00 AM
Lab ID: 1610D49-027	Matrix: Drinking Water

Analyses	Result	Reporting Limit	Qual	Units	BatchID	Dilution Factor	Date Analyzed	Analyst
Trace Elements by ICP/MS E200.8					(E200.2)			
Lead	BRL	1.00		ug/L	231811	1	10/27/2016 18:49	JR

Qualifiers:

- * Value exceeds maximum contaminant level
- BRL Below reporting limit
- H Holding times for preparation or analysis exceeded
- N Analyte not NELAC certified
- B Analyte detected in the associated method blank
- > Greater than Result value

- E Estimated (value above quantitation range)
- S Spike Recovery outside limits due to matrix
- Narr See case narrative
- NC Not confirmed
- < Less than Result value
- J Estimated value detected below Reporting Limit

Analytical Environmental Services, Inc

Date: 1-Nov-16

Client: Atlanta Environmental Mgmt	Client Sample ID: 4068-101816-KS-002-A
Project Name: DCSD - 4068	Collection Date: 10/18/2016 5:09:00 AM
Lab ID: 1610D49-028	Matrix: Drinking Water

Analyses	Result	Reporting Limit	Qual	Units	BatchID	Dilution Factor	Date Analyzed	Analyst
Trace Elements by ICP/MS E200.8					(E200.2)			
Lead	BRL	1.00		ug/L	231811	1	10/27/2016 18:54	JR

Qualifiers:

- * Value exceeds maximum contaminant level
- BRL Below reporting limit
- H Holding times for preparation or analysis exceeded
- N Analyte not NELAC certified
- B Analyte detected in the associated method blank
- > Greater than Result value

- E Estimated (value above quantitation range)
- S Spike Recovery outside limits due to matrix
- Narr See case narrative
- NC Not confirmed
- < Less than Result value
- J Estimated value detected below Reporting Limit

Analytical Environmental Services, Inc

Date: 1-Nov-16

Client: Atlanta Environmental Mgmt	Client Sample ID: 4068-101816-KS-002-B
Project Name: DCSD - 4068	Collection Date: 10/18/2016 5:10:00 AM
Lab ID: 1610D49-029	Matrix: Drinking Water

Analyses	Result	Reporting Limit	Qual	Units	BatchID	Dilution Factor	Date Analyzed	Analyst
Trace Elements by ICP/MS E200.8					(E200.2)			
Lead	BRL	1.00		ug/L	231811	1	10/27/2016 18:58	JR

Qualifiers:

- * Value exceeds maximum contaminant level
- BRL Below reporting limit
- H Holding times for preparation or analysis exceeded
- N Analyte not NELAC certified
- B Analyte detected in the associated method blank
- > Greater than Result value

- E Estimated (value above quantitation range)
- S Spike Recovery outside limits due to matrix
- Narr See case narrative
- NC Not confirmed
- < Less than Result value
- J Estimated value detected below Reporting Limit

Analytical Environmental Services, Inc

Date: 1-Nov-16

Client: Atlanta Environmental Mgmt	Client Sample ID: 4068-101816-KS-003-A
Project Name: DCSD - 4068	Collection Date: 10/18/2016 5:15:00 AM
Lab ID: 1610D49-030	Matrix: Drinking Water

Analyses	Result	Reporting Limit	Qual	Units	BatchID	Dilution Factor	Date Analyzed	Analyst
Trace Elements by ICP/MS E200.8					(E200.2)			
Lead	BRL	1.00		ug/L	231811	1	10/27/2016 19:02	JR

Qualifiers:

- * Value exceeds maximum contaminant level
- BRL Below reporting limit
- H Holding times for preparation or analysis exceeded
- N Analyte not NELAC certified
- B Analyte detected in the associated method blank
- > Greater than Result value

- E Estimated (value above quantitation range)
- S Spike Recovery outside limits due to matrix
- Narr See case narrative
- NC Not confirmed
- < Less than Result value
- J Estimated value detected below Reporting Limit

Analytical Environmental Services, Inc

Date: 1-Nov-16

Client: Atlanta Environmental Mgmt	Client Sample ID: 4068-101816-KS-003-B
Project Name: DCSD - 4068	Collection Date: 10/18/2016 5:16:00 AM
Lab ID: 1610D49-031	Matrix: Drinking Water

Analyses	Result	Reporting Limit	Qual	Units	BatchID	Dilution Factor	Date Analyzed	Analyst
Trace Elements by ICP/MS E200.8					(E200.2)			
Lead	BRL	1.00		ug/L	231811	1	10/27/2016 17:57	JR

Qualifiers:

- * Value exceeds maximum contaminant level
- BRL Below reporting limit
- H Holding times for preparation or analysis exceeded
- N Analyte not NELAC certified
- B Analyte detected in the associated method blank
- > Greater than Result value

- E Estimated (value above quantitation range)
- S Spike Recovery outside limits due to matrix
- Narr See case narrative
- NC Not confirmed
- < Less than Result value
- J Estimated value detected below Reporting Limit

Analytical Environmental Services, Inc

Date: 1-Nov-16

Client: Atlanta Environmental Mgmt	Client Sample ID: 4068-101816-KS-004-A
Project Name: DCSD - 4068	Collection Date: 10/18/2016 5:25:00 AM
Lab ID: 1610D49-032	Matrix: Drinking Water

Analyses	Result	Reporting Limit	Qual	Units	BatchID	Dilution Factor	Date Analyzed	Analyst
Trace Elements by ICP/MS E200.8					(E200.2)			
Lead	BRL	1.00		ug/L	231811	1	10/27/2016 19:07	JR

Qualifiers:

- * Value exceeds maximum contaminant level
- BRL Below reporting limit
- H Holding times for preparation or analysis exceeded
- N Analyte not NELAC certified
- B Analyte detected in the associated method blank
- > Greater than Result value

- E Estimated (value above quantitation range)
- S Spike Recovery outside limits due to matrix
- Narr See case narrative
- NC Not confirmed
- < Less than Result value
- J Estimated value detected below Reporting Limit

Analytical Environmental Services, Inc

Date: 1-Nov-16

Client: Atlanta Environmental Mgmt	Client Sample ID: 4068-101816-KS-004-B
Project Name: DCSD - 4068	Collection Date: 10/18/2016 5:26:00 AM
Lab ID: 1610D49-033	Matrix: Drinking Water

Analyses	Result	Reporting Limit	Qual	Units	BatchID	Dilution Factor	Date Analyzed	Analyst
Trace Elements by ICP/MS E200.8					(E200.2)			
Lead	BRL	1.00		ug/L	231811	1	10/27/2016 19:11	JR

Qualifiers:

- * Value exceeds maximum contaminant level
- BRL Below reporting limit
- H Holding times for preparation or analysis exceeded
- N Analyte not NELAC certified
- B Analyte detected in the associated method blank
- > Greater than Result value

- E Estimated (value above quantitation range)
- S Spike Recovery outside limits due to matrix
- Narr See case narrative
- NC Not confirmed
- < Less than Result value
- J Estimated value detected below Reporting Limit

Analytical Environmental Services, Inc

Date: 1-Nov-16

Client: Atlanta Environmental Mgmt	Client Sample ID: 4068-101816-KS-005-A
Project Name: DCSD - 4068	Collection Date: 10/18/2016 5:34:00 AM
Lab ID: 1610D49-034	Matrix: Drinking Water

Analyses	Result	Reporting Limit	Qual	Units	BatchID	Dilution Factor	Date Analyzed	Analyst
Trace Elements by ICP/MS E200.8					(E200.2)			
Lead	BRL	1.00		ug/L	231811	1	10/27/2016 19:24	JR

Qualifiers:

- * Value exceeds maximum contaminant level
- BRL Below reporting limit
- H Holding times for preparation or analysis exceeded
- N Analyte not NELAC certified
- B Analyte detected in the associated method blank
- > Greater than Result value

- E Estimated (value above quantitation range)
- S Spike Recovery outside limits due to matrix
- Narr See case narrative
- NC Not confirmed
- < Less than Result value
- J Estimated value detected below Reporting Limit

Analytical Environmental Services, Inc

Date: 1-Nov-16

Client: Atlanta Environmental Mgmt	Client Sample ID: 4068-101816-KS-005-B
Project Name: DCSD - 4068	Collection Date: 10/18/2016 5:35:00 AM
Lab ID: 1610D49-035	Matrix: Drinking Water

Analyses	Result	Reporting Limit	Qual	Units	BatchID	Dilution Factor	Date Analyzed	Analyst
Trace Elements by ICP/MS E200.8					(E200.2)			
Lead	BRL	1.00		ug/L	231811	1	10/27/2016 19:28	JR

Qualifiers:

- * Value exceeds maximum contaminant level
- BRL Below reporting limit
- H Holding times for preparation or analysis exceeded
- N Analyte not NELAC certified
- B Analyte detected in the associated method blank
- > Greater than Result value

- E Estimated (value above quantitation range)
- S Spike Recovery outside limits due to matrix
- Narr See case narrative
- NC Not confirmed
- < Less than Result value
- J Estimated value detected below Reporting Limit

Analytical Environmental Services, Inc

Date: 1-Nov-16

Client: Atlanta Environmental Mgmt	Client Sample ID: 4068-101816-KS-006-A
Project Name: DCSD - 4068	Collection Date: 10/18/2016 5:30:00 AM
Lab ID: 1610D49-036	Matrix: Drinking Water

Analyses	Result	Reporting Limit	Qual	Units	BatchID	Dilution Factor	Date Analyzed	Analyst
Trace Elements by ICP/MS E200.8								
				(E200.2)				
Lead	BRL	1.00		ug/L	231811	1	10/27/2016 19:33	JR

Qualifiers:

- * Value exceeds maximum contaminant level
- BRL Below reporting limit
- H Holding times for preparation or analysis exceeded
- N Analyte not NELAC certified
- B Analyte detected in the associated method blank
- > Greater than Result value

- E Estimated (value above quantitation range)
- S Spike Recovery outside limits due to matrix
- Narr See case narrative
- NC Not confirmed
- < Less than Result value
- J Estimated value detected below Reporting Limit

Analytical Environmental Services, Inc

Date: 1-Nov-16

Client: Atlanta Environmental Mgmt	Client Sample ID: 4068-101816-KS-006-B
Project Name: DCSD - 4068	Collection Date: 10/18/2016 5:32:00 AM
Lab ID: 1610D49-037	Matrix: Drinking Water

Analyses	Result	Reporting Limit	Qual	Units	BatchID	Dilution Factor	Date Analyzed	Analyst
Trace Elements by ICP/MS E200.8					(E200.2)			
Lead	BRL	1.00		ug/L	231811	1	10/27/2016 19:37	JR

Qualifiers:

- * Value exceeds maximum contaminant level
- BRL Below reporting limit
- H Holding times for preparation or analysis exceeded
- N Analyte not NELAC certified
- B Analyte detected in the associated method blank
- > Greater than Result value

- E Estimated (value above quantitation range)
- S Spike Recovery outside limits due to matrix
- Narr See case narrative
- NC Not confirmed
- < Less than Result value
- J Estimated value detected below Reporting Limit

Analytical Environmental Services, Inc

Date: 1-Nov-16

Client: Atlanta Environmental Mgmt	Client Sample ID: 4068-101816-KS-006-C
Project Name: DCSD - 4068	Collection Date: 10/18/2016 5:31:00 AM
Lab ID: 1610D49-038	Matrix: Drinking Water

Analyses	Result	Reporting Limit	Qual	Units	BatchID	Dilution Factor	Date Analyzed	Analyst
Trace Elements by ICP/MS E200.8					(E200.2)			
Lead	BRL	1.00		ug/L	231811	1	10/27/2016 19:42	JR

Qualifiers:

- * Value exceeds maximum contaminant level
- BRL Below reporting limit
- H Holding times for preparation or analysis exceeded
- N Analyte not NELAC certified
- B Analyte detected in the associated method blank
- > Greater than Result value

- E Estimated (value above quantitation range)
- S Spike Recovery outside limits due to matrix
- Narr See case narrative
- NC Not confirmed
- < Less than Result value
- J Estimated value detected below Reporting Limit

Analytical Environmental Services, Inc

Date: 1-Nov-16

Client: Atlanta Environmental Mgmt	Client Sample ID: 4068-101816-KS-007-A
Project Name: DCSD - 4068	Collection Date: 10/18/2016 4:58:00 AM
Lab ID: 1610D49-039	Matrix: Drinking Water

Analyses	Result	Reporting Limit	Qual	Units	BatchID	Dilution Factor	Date Analyzed	Analyst
Trace Elements by ICP/MS E200.8					(E200.2)			
Lead	BRL	1.00		ug/L	231811	1	10/27/2016 19:46	JR

Qualifiers:

- * Value exceeds maximum contaminant level
- BRL Below reporting limit
- H Holding times for preparation or analysis exceeded
- N Analyte not NELAC certified
- B Analyte detected in the associated method blank
- > Greater than Result value

- E Estimated (value above quantitation range)
- S Spike Recovery outside limits due to matrix
- Narr See case narrative
- NC Not confirmed
- < Less than Result value
- J Estimated value detected below Reporting Limit

Analytical Environmental Services, Inc

Date: 1-Nov-16

Client: Atlanta Environmental Mgmt	Client Sample ID: 4068-101816-KS-007-B
Project Name: DCSD - 4068	Collection Date: 10/18/2016 4:59:00 AM
Lab ID: 1610D49-040	Matrix: Drinking Water

Analyses	Result	Reporting Limit	Qual	Units	BatchID	Dilution Factor	Date Analyzed	Analyst
Trace Elements by ICP/MS E200.8					(E200.2)			
Lead	BRL	1.00		ug/L	231811	1	10/27/2016 19:50	JR

Qualifiers:

- * Value exceeds maximum contaminant level
- BRL Below reporting limit
- H Holding times for preparation or analysis exceeded
- N Analyte not NELAC certified
- B Analyte detected in the associated method blank
- > Greater than Result value

- E Estimated (value above quantitation range)
- S Spike Recovery outside limits due to matrix
- Narr See case narrative
- NC Not confirmed
- < Less than Result value
- J Estimated value detected below Reporting Limit

Analytical Environmental Services, Inc

Date: 1-Nov-16

Client: Atlanta Environmental Mgmt	Client Sample ID: 4068-101816-KS-008-A
Project Name: DCSD - 4068	Collection Date: 10/18/2016 5:03:00 AM
Lab ID: 1610D49-041	Matrix: Drinking Water

Analyses	Result	Reporting Limit	Qual	Units	BatchID	Dilution Factor	Date Analyzed	Analyst
Trace Elements by ICP/MS E200.8					(E200.2)			
Lead	BRL	1.00		ug/L	231812	1	10/27/2016 20:03	JR

Qualifiers:

- * Value exceeds maximum contaminant level
- BRL Below reporting limit
- H Holding times for preparation or analysis exceeded
- N Analyte not NELAC certified
- B Analyte detected in the associated method blank
- > Greater than Result value

- E Estimated (value above quantitation range)
- S Spike Recovery outside limits due to matrix
- Narr See case narrative
- NC Not confirmed
- < Less than Result value
- J Estimated value detected below Reporting Limit

Analytical Environmental Services, Inc

Date: 1-Nov-16

Client: Atlanta Environmental Mgmt	Client Sample ID: 4068-101816-KS-008-B
Project Name: DCSD - 4068	Collection Date: 10/18/2016 5:04:00 AM
Lab ID: 1610D49-042	Matrix: Drinking Water

Analyses	Result	Reporting Limit	Qual	Units	BatchID	Dilution Factor	Date Analyzed	Analyst
Trace Elements by ICP/MS E200.8					(E200.2)			
Lead	BRL	1.00		ug/L	231812	1	10/27/2016 20:34	JR

Qualifiers:

- * Value exceeds maximum contaminant level
- BRL Below reporting limit
- H Holding times for preparation or analysis exceeded
- N Analyte not NELAC certified
- B Analyte detected in the associated method blank
- > Greater than Result value

- E Estimated (value above quantitation range)
- S Spike Recovery outside limits due to matrix
- Narr See case narrative
- NC Not confirmed
- < Less than Result value
- J Estimated value detected below Reporting Limit

Analytical Environmental Services, Inc

Date: 1-Nov-16

Client: Atlanta Environmental Mgmt	Client Sample ID: 4068-101816-KS-009-A
Project Name: DCSD - 4068	Collection Date: 10/18/2016 5:09:00 AM
Lab ID: 1610D49-043	Matrix: Drinking Water

Analyses	Result	Reporting Limit	Qual	Units	BatchID	Dilution Factor	Date Analyzed	Analyst
Trace Elements by ICP/MS E200.8					(E200.2)			
Lead	BRL	1.00		ug/L	231812	1	10/27/2016 20:38	JR

Qualifiers:

- * Value exceeds maximum contaminant level
- BRL Below reporting limit
- H Holding times for preparation or analysis exceeded
- N Analyte not NELAC certified
- B Analyte detected in the associated method blank
- > Greater than Result value

- E Estimated (value above quantitation range)
- S Spike Recovery outside limits due to matrix
- Narr See case narrative
- NC Not confirmed
- < Less than Result value
- J Estimated value detected below Reporting Limit

Analytical Environmental Services, Inc

Date: 1-Nov-16

Client: Atlanta Environmental Mgmt	Client Sample ID: 4068-101816-KS-009-B
Project Name: DCSD - 4068	Collection Date: 10/18/2016 5:10:00 AM
Lab ID: 1610D49-044	Matrix: Drinking Water

Analyses	Result	Reporting Limit	Qual	Units	BatchID	Dilution Factor	Date Analyzed	Analyst
Trace Elements by ICP/MS E200.8					(E200.2)			
Lead	BRL	1.00		ug/L	231812	1	10/27/2016 20:42	JR

Qualifiers:

- * Value exceeds maximum contaminant level
- BRL Below reporting limit
- H Holding times for preparation or analysis exceeded
- N Analyte not NELAC certified
- B Analyte detected in the associated method blank
- > Greater than Result value

- E Estimated (value above quantitation range)
- S Spike Recovery outside limits due to matrix
- Narr See case narrative
- NC Not confirmed
- < Less than Result value
- J Estimated value detected below Reporting Limit

Analytical Environmental Services, Inc

Date: 1-Nov-16

Client: Atlanta Environmental Mgmt	Client Sample ID: 4068-101816-KS-010-A
Project Name: DCSD - 4068	Collection Date: 10/18/2016 5:13:00 AM
Lab ID: 1610D49-045	Matrix: Drinking Water

Analyses	Result	Reporting Limit	Qual	Units	BatchID	Dilution Factor	Date Analyzed	Analyst
Trace Elements by ICP/MS E200.8					(E200.2)			
Lead	BRL	1.00		ug/L	231812	1	10/27/2016 20:47	JR

Qualifiers:

- * Value exceeds maximum contaminant level
- BRL Below reporting limit
- H Holding times for preparation or analysis exceeded
- N Analyte not NELAC certified
- B Analyte detected in the associated method blank
- > Greater than Result value

- E Estimated (value above quantitation range)
- S Spike Recovery outside limits due to matrix
- Narr See case narrative
- NC Not confirmed
- < Less than Result value
- J Estimated value detected below Reporting Limit

Analytical Environmental Services, Inc

Date: 1-Nov-16

Client: Atlanta Environmental Mgmt	Client Sample ID: 4068-101816-KS-010-B
Project Name: DCSD - 4068	Collection Date: 10/18/2016 5:14:00 AM
Lab ID: 1610D49-046	Matrix: Drinking Water

Analyses	Result	Reporting Limit	Qual	Units	BatchID	Dilution Factor	Date Analyzed	Analyst
Trace Elements by ICP/MS E200.8					(E200.2)			
Lead	BRL	1.00		ug/L	231812	1	10/27/2016 20:51	JR

Qualifiers:

- * Value exceeds maximum contaminant level
- BRL Below reporting limit
- H Holding times for preparation or analysis exceeded
- N Analyte not NELAC certified
- B Analyte detected in the associated method blank
- > Greater than Result value

- E Estimated (value above quantitation range)
- S Spike Recovery outside limits due to matrix
- Narr See case narrative
- NC Not confirmed
- < Less than Result value
- J Estimated value detected below Reporting Limit

Analytical Environmental Services, Inc

Date: 1-Nov-16

Client: Atlanta Environmental Mgmt	Client Sample ID: 4068-101816-RS-001-A
Project Name: DCSD - 4068	Collection Date: 10/18/2016 5:21:00 AM
Lab ID: 1610D49-047	Matrix: Drinking Water

Analyses	Result	Reporting Limit	Qual	Units	BatchID	Dilution Factor	Date Analyzed	Analyst
Trace Elements by ICP/MS E200.8					(E200.2)			
Lead	BRL	1.00		ug/L	231812	1	10/27/2016 20:55	JR

Qualifiers:

- * Value exceeds maximum contaminant level
- BRL Below reporting limit
- H Holding times for preparation or analysis exceeded
- N Analyte not NELAC certified
- B Analyte detected in the associated method blank
- > Greater than Result value

- E Estimated (value above quantitation range)
- S Spike Recovery outside limits due to matrix
- Narr See case narrative
- NC Not confirmed
- < Less than Result value
- J Estimated value detected below Reporting Limit

Analytical Environmental Services, Inc

Date: 1-Nov-16

Client: Atlanta Environmental Mgmt	Client Sample ID: 4068-101816-RS-001-B
Project Name: DCSD - 4068	Collection Date: 10/18/2016 5:22:00 AM
Lab ID: 1610D49-048	Matrix: Drinking Water

Analyses	Result	Reporting Limit	Qual	Units	BatchID	Dilution Factor	Date Analyzed	Analyst
Trace Elements by ICP/MS E200.8					(E200.2)			
Lead	BRL	1.00		ug/L	231812	1	10/27/2016 21:09	JR

Qualifiers:

- * Value exceeds maximum contaminant level
- BRL Below reporting limit
- H Holding times for preparation or analysis exceeded
- N Analyte not NELAC certified
- B Analyte detected in the associated method blank
- > Greater than Result value

- E Estimated (value above quantitation range)
- S Spike Recovery outside limits due to matrix
- Narr See case narrative
- NC Not confirmed
- < Less than Result value
- J Estimated value detected below Reporting Limit

Analytical Environmental Services, Inc

Date: 1-Nov-16

Client: Atlanta Environmental Mgmt	Client Sample ID: 4068-101816-TL-001-A
Project Name: DCSD - 4068	Collection Date: 10/18/2016 4:55:00 AM
Lab ID: 1610D49-049	Matrix: Drinking Water

Analyses	Result	Reporting Limit	Qual	Units	BatchID	Dilution Factor	Date Analyzed	Analyst
Trace Elements by ICP/MS E200.8					(E200.2)			
Lead	BRL	1.00		ug/L	231812	1	10/27/2016 21:13	JR

Qualifiers:

- * Value exceeds maximum contaminant level
- BRL Below reporting limit
- H Holding times for preparation or analysis exceeded
- N Analyte not NELAC certified
- B Analyte detected in the associated method blank
- > Greater than Result value

- E Estimated (value above quantitation range)
- S Spike Recovery outside limits due to matrix
- Narr See case narrative
- NC Not confirmed
- < Less than Result value
- J Estimated value detected below Reporting Limit

Analytical Environmental Services, Inc

Date: 1-Nov-16

Client: Atlanta Environmental Mgmt	Client Sample ID: 4068-101816-TL-001-B
Project Name: DCSD - 4068	Collection Date: 10/18/2016 4:56:00 AM
Lab ID: 1610D49-050	Matrix: Drinking Water

Analyses	Result	Reporting Limit	Qual	Units	BatchID	Dilution Factor	Date Analyzed	Analyst
Trace Elements by ICP/MS E200.8					(E200.2)			
Lead	BRL	1.00		ug/L	231812	1	10/27/2016 21:17	JR

Qualifiers:

- * Value exceeds maximum contaminant level
- BRL Below reporting limit
- H Holding times for preparation or analysis exceeded
- N Analyte not NELAC certified
- B Analyte detected in the associated method blank
- > Greater than Result value

- E Estimated (value above quantitation range)
- S Spike Recovery outside limits due to matrix
- Narr See case narrative
- NC Not confirmed
- < Less than Result value
- J Estimated value detected below Reporting Limit

Analytical Environmental Services, Inc

Date: 1-Nov-16

Client: Atlanta Environmental Mgmt	Client Sample ID: 4068-101816-CS-001-A
Project Name: DCSD - 4068	Collection Date: 10/18/2016 4:56:00 AM
Lab ID: 1610D49-051	Matrix: Drinking Water

Analyses	Result	Reporting Limit	Qual	Units	BatchID	Dilution Factor	Date Analyzed	Analyst
Trace Elements by ICP/MS E200.8					(E200.2)			
Lead	BRL	1.00		ug/L	231812	1	10/27/2016 20:25	JR

Qualifiers:

- * Value exceeds maximum contaminant level
- BRL Below reporting limit
- H Holding times for preparation or analysis exceeded
- N Analyte not NELAC certified
- B Analyte detected in the associated method blank
- > Greater than Result value

- E Estimated (value above quantitation range)
- S Spike Recovery outside limits due to matrix
- Narr See case narrative
- NC Not confirmed
- < Less than Result value
- J Estimated value detected below Reporting Limit

Analytical Environmental Services, Inc

Date: 1-Nov-16

Client: Atlanta Environmental Mgmt	Client Sample ID: 4068-101816-CS-001-B
Project Name: DCSD - 4068	Collection Date: 10/18/2016 4:57:00 AM
Lab ID: 1610D49-052	Matrix: Drinking Water

Analyses	Result	Reporting Limit	Qual	Units	BatchID	Dilution Factor	Date Analyzed	Analyst
Trace Elements by ICP/MS E200.8					(E200.2)			
Lead	BRL	1.00		ug/L	231812	1	10/27/2016 21:22	JR

Qualifiers:

- * Value exceeds maximum contaminant level
- BRL Below reporting limit
- H Holding times for preparation or analysis exceeded
- N Analyte not NELAC certified
- B Analyte detected in the associated method blank
- > Greater than Result value

- E Estimated (value above quantitation range)
- S Spike Recovery outside limits due to matrix
- Narr See case narrative
- NC Not confirmed
- < Less than Result value
- J Estimated value detected below Reporting Limit

Analytical Environmental Services, Inc

Date: 1-Nov-16

Client: Atlanta Environmental Mgmt	Client Sample ID: 4068-101816-IM-001-A
Project Name: DCSD - 4068	Collection Date: 10/18/2016 5:00:00 AM
Lab ID: 1610D49-053	Matrix: Drinking Water

Analyses	Result	Reporting Limit	Qual	Units	BatchID	Dilution Factor	Date Analyzed	Analyst
Trace Elements by ICP/MS E200.8					(E200.2)			
Lead	BRL	1.00		ug/L	231812	1	10/27/2016 21:26	JR

Qualifiers:

- * Value exceeds maximum contaminant level
- BRL Below reporting limit
- H Holding times for preparation or analysis exceeded
- N Analyte not NELAC certified
- B Analyte detected in the associated method blank
- > Greater than Result value

- E Estimated (value above quantitation range)
- S Spike Recovery outside limits due to matrix
- Narr See case narrative
- NC Not confirmed
- < Less than Result value
- J Estimated value detected below Reporting Limit

Analytical Environmental Services, Inc

Date: 1-Nov-16

Client: Atlanta Environmental Mgmt	Client Sample ID: 4068-101816-SC-001-A
Project Name: DCSD - 4068	Collection Date: 10/18/2016 5:48:00 AM
Lab ID: 1610D49-054	Matrix: Drinking Water

Analyses	Result	Reporting Limit	Qual	Units	BatchID	Dilution Factor	Date Analyzed	Analyst
Trace Elements by ICP/MS E200.8					(E200.2)			
Lead	23.4	1.00		ug/L	231812	1	10/27/2016 21:30	JR

Qualifiers:

- * Value exceeds maximum contaminant level
- BRL Below reporting limit
- H Holding times for preparation or analysis exceeded
- N Analyte not NELAC certified
- B Analyte detected in the associated method blank
- > Greater than Result value

- E Estimated (value above quantitation range)
- S Spike Recovery outside limits due to matrix
- Narr See case narrative
- NC Not confirmed
- < Less than Result value
- J Estimated value detected below Reporting Limit

Analytical Environmental Services, Inc

Date: 1-Nov-16

Client: Atlanta Environmental Mgmt	Client Sample ID: 4068-101816-DF-015-A
Project Name: DCSD - 4068	Collection Date: 10/18/2016 5:15:00 AM
Lab ID: 1610D49-055	Matrix: Drinking Water

Analyses	Result	Reporting Limit	Qual	Units	BatchID	Dilution Factor	Date Analyzed	Analyst
Trace Elements by ICP/MS E200.8					(E200.2)			
Lead	2.39	1.00		ug/L	231812	1	10/27/2016 21:35	JR

Qualifiers:

- * Value exceeds maximum contaminant level
- BRL Below reporting limit
- H Holding times for preparation or analysis exceeded
- N Analyte not NELAC certified
- B Analyte detected in the associated method blank
- > Greater than Result value

- E Estimated (value above quantitation range)
- S Spike Recovery outside limits due to matrix
- Narr See case narrative
- NC Not confirmed
- < Less than Result value
- J Estimated value detected below Reporting Limit

Analytical Environmental Services, Inc

Date: 1-Nov-16

Client: Atlanta Environmental Mgmt	Client Sample ID: 4068-101816-DF-015-B
Project Name: DCSD - 4068	Collection Date: 10/18/2016 5:16:00 AM
Lab ID: 1610D49-056	Matrix: Drinking Water

Analyses	Result	Reporting Limit	Qual	Units	BatchID	Dilution Factor	Date Analyzed	Analyst
Trace Elements by ICP/MS E200.8					(E200.2)			
Lead	2.03	1.00		ug/L	231812	1	10/27/2016 21:39	JR

Qualifiers:

- * Value exceeds maximum contaminant level
- BRL Below reporting limit
- H Holding times for preparation or analysis exceeded
- N Analyte not NELAC certified
- B Analyte detected in the associated method blank
- > Greater than Result value

- E Estimated (value above quantitation range)
- S Spike Recovery outside limits due to matrix
- Narr See case narrative
- NC Not confirmed
- < Less than Result value
- J Estimated value detected below Reporting Limit

Analytical Environmental Services, Inc.

Sample/Cooler Receipt Checklist

Client AEM

Work Order Number 1010D49

Checklist completed by Alexandra Judge Signature Date 10/18/2010

Carrier name: FedEx UPS Courier Client US Mail Other

Shipping container/cooler in good condition? Yes No Not Present

Custody seals intact on shipping container/cooler? Yes No Not Present

Custody seals intact on sample bottles? Yes No Not Present

Container/Temp Blank temperature in compliance? (0°≤6°C)* Yes No

Cooler #1 0.4°C Cooler #2 1.0°C Cooler #3 _____ Cooler #4 _____ Cooler#5 _____ Cooler #6 _____

Chain of custody present? Yes No

Chain of custody signed when relinquished and received? Yes No

Chain of custody agrees with sample labels? Yes No

Samples in proper container/bottle? Yes No

Sample containers intact? Yes No

Sufficient sample volume for indicated test? Yes No

All samples received within holding time? Yes No

Was TAT marked on the COC? Yes No

Proceed with Standard TAT as per project history? Yes No Not Applicable

Water - VOA vials have zero headspace? No VOA vials submitted Yes No

Water - pH acceptable upon receipt? Yes No Not Applicable

Sample Condition: Good Adjusted? _____ Other(Explain) _____ Checked by AJ

(For diffusive samples or AIHA lead) Is a known blank included? Yes No

See Case Narrative for resolution of the Non-Conformance.

* Samples do not have to comply with the given range for certain parameters.

Client: Atlanta Environmental Mgmt
Project Name: DCSD - 4068
Workorder: 1610D49

ANALYTICAL QC SUMMARY REPORT

BatchID: 231673

Sample ID: MB-231673	Client ID:	Units: ug/L	Prep Date: 10/26/2016	Run No: 328390							
SampleType: MBLK	TestCode: Trace Elements by ICP/MS E200.8	BatchID: 231673	Analysis Date: 10/26/2016	Seq No: 7125039							
Analyte	Result	RPT Limit	SPK value	SPK Ref Val	%REC	Low Limit	High Limit	RPD Ref Val	%RPD	RPD Limit	Qual

Lead BRL 1.00

Sample ID: LCS-231673	Client ID:	Units: ug/L	Prep Date: 10/26/2016	Run No: 328390							
SampleType: LCS	TestCode: Trace Elements by ICP/MS E200.8	BatchID: 231673	Analysis Date: 10/26/2016	Seq No: 7125040							
Analyte	Result	RPT Limit	SPK value	SPK Ref Val	%REC	Low Limit	High Limit	RPD Ref Val	%RPD	RPD Limit	Qual

Lead 100.5 1.00 100.0 0.02801 100 85 115

Sample ID: 1610D49-001AMS	Client ID: 4068-101816-DF-001-A	Units: ug/L	Prep Date: 10/26/2016	Run No: 328390							
SampleType: MS	TestCode: Trace Elements by ICP/MS E200.8	BatchID: 231673	Analysis Date: 10/26/2016	Seq No: 7125042							
Analyte	Result	RPT Limit	SPK value	SPK Ref Val	%REC	Low Limit	High Limit	RPD Ref Val	%RPD	RPD Limit	Qual

Lead 100.0 1.00 100.0 0.03770 100.0 70 130

Sample ID: 1610D49-011AMS	Client ID: 4068-101816-DF-005-B	Units: ug/L	Prep Date: 10/26/2016	Run No: 328390							
SampleType: MS	TestCode: Trace Elements by ICP/MS E200.8	BatchID: 231673	Analysis Date: 10/26/2016	Seq No: 7125047							
Analyte	Result	RPT Limit	SPK value	SPK Ref Val	%REC	Low Limit	High Limit	RPD Ref Val	%RPD	RPD Limit	Qual

Lead 101.4 1.00 100.0 0.2104 101 70 130

Sample ID: 1610D49-001AMSD	Client ID: 4068-101816-DF-001-A	Units: ug/L	Prep Date: 10/26/2016	Run No: 328390							
SampleType: MSD	TestCode: Trace Elements by ICP/MS E200.8	BatchID: 231673	Analysis Date: 10/26/2016	Seq No: 7125045							
Analyte	Result	RPT Limit	SPK value	SPK Ref Val	%REC	Low Limit	High Limit	RPD Ref Val	%RPD	RPD Limit	Qual

Lead 101.1 1.00 100.0 0.03770 101 70 130 100.0 1.09 20

Qualifiers: > Greater than Result value < Less than Result value B Analyte detected in the associated method blank
 BRL Below reporting limit E Estimated (value above quantitation range) H Holding times for preparation or analysis exceeded
 J Estimated value detected below Reporting Limit N Analyte not NELAC certified R RPD outside limits due to matrix
 Rpt Lim Reporting Limit S Spike Recovery outside limits due to matrix

Client: Atlanta Environmental Mgmt
 Project Name: DCSD - 4068
 Workorder: 1610D49

ANALYTICAL QC SUMMARY REPORT

BatchID: 231811

Sample ID: MB-231811	Client ID:	Units: ug/L	Prep Date: 10/27/2016	Run No: 328455							
SampleType: MBLK	TestCode: Trace Elements by ICP/MS E200.8	BatchID: 231811	Analysis Date: 10/27/2016	Seq No: 7126768							
Analyte	Result	RPT Limit	SPK value	SPK Ref Val	%REC	Low Limit	High Limit	RPD Ref Val	%RPD	RPD Limit	Qual

Lead BRL 1.00

Sample ID: LCS-231811	Client ID:	Units: ug/L	Prep Date: 10/27/2016	Run No: 328455							
SampleType: LCS	TestCode: Trace Elements by ICP/MS E200.8	BatchID: 231811	Analysis Date: 10/27/2016	Seq No: 7126769							
Analyte	Result	RPT Limit	SPK value	SPK Ref Val	%REC	Low Limit	High Limit	RPD Ref Val	%RPD	RPD Limit	Qual

Lead 96.72 1.00 100.0 96.7 85 115

Sample ID: 1610D49-021AMS	Client ID: 4068-101816-DF-012-B	Units: ug/L	Prep Date: 10/27/2016	Run No: 328455							
SampleType: MS	TestCode: Trace Elements by ICP/MS E200.8	BatchID: 231811	Analysis Date: 10/27/2016	Seq No: 7126774							
Analyte	Result	RPT Limit	SPK value	SPK Ref Val	%REC	Low Limit	High Limit	RPD Ref Val	%RPD	RPD Limit	Qual

Lead 96.30 1.00 100.0 0.03319 96.3 70 130

Sample ID: 1610D49-031AMS	Client ID: 4068-101816-KS-003-B	Units: ug/L	Prep Date: 10/27/2016	Run No: 328455							
SampleType: MS	TestCode: Trace Elements by ICP/MS E200.8	BatchID: 231811	Analysis Date: 10/27/2016	Seq No: 7126781							
Analyte	Result	RPT Limit	SPK value	SPK Ref Val	%REC	Low Limit	High Limit	RPD Ref Val	%RPD	RPD Limit	Qual

Lead 98.54 1.00 100.0 0.06846 98.5 70 130

Sample ID: 1610D49-021AMSD	Client ID: 4068-101816-DF-012-B	Units: ug/L	Prep Date: 10/27/2016	Run No: 328455							
SampleType: MSD	TestCode: Trace Elements by ICP/MS E200.8	BatchID: 231811	Analysis Date: 10/27/2016	Seq No: 7126777							
Analyte	Result	RPT Limit	SPK value	SPK Ref Val	%REC	Low Limit	High Limit	RPD Ref Val	%RPD	RPD Limit	Qual

Lead 99.23 1.00 100.0 0.03319 99.2 70 130 96.30 3.00 20

Qualifiers: > Greater than Result value < Less than Result value B Analyte detected in the associated method blank
 BRL Below reporting limit E Estimated (value above quantitation range) H Holding times for preparation or analysis exceeded
 J Estimated value detected below Reporting Limit N Analyte not NELAC certified R RPD outside limits due to matrix
 Rpt Lim Reporting Limit S Spike Recovery outside limits due to matrix

Client: Atlanta Environmental Mgmt
Project Name: DCSD - 4068
Workorder: 1610D49

ANALYTICAL QC SUMMARY REPORT

BatchID: 231812

Sample ID: MB-231812	Client ID:	Units: ug/L	Prep Date: 10/27/2016	Run No: 328456							
SampleType: MBLK	TestCode: Trace Elements by ICP/MS E200.8	BatchID: 231812	Analysis Date: 10/27/2016	Seq No: 7126840							
Analyte	Result	RPT Limit	SPK value	SPK Ref Val	%REC	Low Limit	High Limit	RPD Ref Val	%RPD	RPD Limit	Qual

Lead BRL 1.00

Sample ID: LCS-231812	Client ID:	Units: ug/L	Prep Date: 10/27/2016	Run No: 328456							
SampleType: LCS	TestCode: Trace Elements by ICP/MS E200.8	BatchID: 231812	Analysis Date: 10/27/2016	Seq No: 7126841							
Analyte	Result	RPT Limit	SPK value	SPK Ref Val	%REC	Low Limit	High Limit	RPD Ref Val	%RPD	RPD Limit	Qual

Lead 99.92 1.00 100.0 99.9 85 115

Sample ID: 1610D49-041AMS	Client ID: 4068-101816-KS-008-A	Units: ug/L	Prep Date: 10/27/2016	Run No: 328456							
SampleType: MS	TestCode: Trace Elements by ICP/MS E200.8	BatchID: 231812	Analysis Date: 10/27/2016	Seq No: 7126847							
Analyte	Result	RPT Limit	SPK value	SPK Ref Val	%REC	Low Limit	High Limit	RPD Ref Val	%RPD	RPD Limit	Qual

Lead 98.93 1.00 100.0 0.09272 98.8 70 130

Sample ID: 1610D49-051AMS	Client ID: 4068-101816-CS-001-A	Units: ug/L	Prep Date: 10/27/2016	Run No: 328456							
SampleType: MS	TestCode: Trace Elements by ICP/MS E200.8	BatchID: 231812	Analysis Date: 10/27/2016	Seq No: 7126851							
Analyte	Result	RPT Limit	SPK value	SPK Ref Val	%REC	Low Limit	High Limit	RPD Ref Val	%RPD	RPD Limit	Qual

Lead 99.83 1.00 100.0 0.1441 99.7 70 130

Sample ID: 1610D49-041AMSD	Client ID: 4068-101816-KS-008-A	Units: ug/L	Prep Date: 10/27/2016	Run No: 328456							
SampleType: MSD	TestCode: Trace Elements by ICP/MS E200.8	BatchID: 231812	Analysis Date: 10/27/2016	Seq No: 7126848							
Analyte	Result	RPT Limit	SPK value	SPK Ref Val	%REC	Low Limit	High Limit	RPD Ref Val	%RPD	RPD Limit	Qual

Lead 98.63 1.00 100.0 0.09272 98.5 70 130 98.93 0.304 20

Qualifiers: > Greater than Result value < Less than Result value B Analyte detected in the associated method blank
 BRL Below reporting limit E Estimated (value above quantitation range) H Holding times for preparation or analysis exceeded
 J Estimated value detected below Reporting Limit N Analyte not NELAC certified R RPD outside limits due to matrix
 Rpt Lim Reporting Limit S Spike Recovery outside limits due to matrix

Leona Miles

From: NoReply@aesatlanta.net
Sent: Tuesday, October 24, 2017 4:48 PM
To: leona-miles@aem-net.com; tim-royer@aem-net.com
Subject: DCSD - 4068
Attachments: 1710F39_REPORT.pdf; 1710F39Invoice.pdf

Please see attached. If you have any questions or need further assistance please contact your project manager at 770-457-8177.

AES Reporting System

ANALYTICAL ENVIRONMENTAL SERVICES, INC.
3080 Presidential Drive ATLANTA, GA 30340
Tel:770-457-8177 Fax:770-457-8188
<http://www.aesatlanta.com>

NOTICE OF CONFIDENTIALITY: The information in this email and / or attachments may be legally privileged and is confidential information intended for the use of the individual or entity named in the email address. If the reader of this message is not the intended recipient, you are hereby notified that any use, dissemination, distribution, or copy of this email and / or attachments is strictly prohibited. If you have received this email in error, please notify Analytical Environmental Services Customer Service by telephone at (770) 457-8177 or by email at info@aesatlanta.com <<mailto:info@aesatlanta.com>> and delete the message. Thank you



ANALYTICAL ENVIRONMENTAL SERVICES, INC.

October 24, 2017

Leona Miles
Atlanta Environmental Mgmt
2580 NE Expressway
Atlanta GA 30345

RE: DCSD - 4068

Dear Leona Miles:

Order No: 1710F39

Analytical Environmental Services, Inc. received 5 samples on 10/17/2017 9:57:00 AM for the analyses presented in following report.

No problems were encountered during the analyses. Additionally, all results for the associated Quality Control samples were within EPA and/or AES established limits. Any discrepancies associated with the analyses contained herein will be noted and submitted in the form of a project Case Narrative.

AES's accreditations are as follows:

-NELAP/State of Florida Laboratory ID E87582 for analysis of Non-Potable Water, Solid & Chemical Materials, Air & Emissions Volatile Organics, and Drinking Water Microbiology & Metals, effective 07/01/17-06/30/18.

State of Georgia, Department of Natural Resources ID #800 for analysis of Drinking Water Metals, effective 07/01/17-06/30/18 and Total Coliforms/ E. coli, effective 04/25/17-04/24/20.

-NELAP/Louisiana Agency Interest No. 100818 for or analysis of Non-Potable Water and Solid & Chemical Materials, effective 07/01/17-06/30/18.

-AIHA-LAP, LLC Laboratory ID: 100671 for Industrial Hygiene samples (Organics, Metals, PCM Asbestos, Gravimetric), Environmental Lead (Paint, Soil, Dust Wipes, Air), and Environmental Microbiology (Fungal) Direct Examination, effective until 11/01/17.

These results relate only to the items tested. This report may only be reproduced in full.

If you have any questions regarding these test results, please feel free to call.

Sincerely,

Ioana Pacurar
Project Manager

Analytical Environmental Services, Inc

Date: 24-Oct-17

Client: Atlanta Environmental Mgmt	Client Sample ID: 4068-101717-SC-001-A
Project Name: DCSD - 4068	Collection Date: 10/17/2017 4:55:00 AM
Lab ID: 1710F39-001	Matrix: Drinking Water

Analyses	Result	Reporting Limit	Qual	Units	BatchID	Dilution Factor	Date Analyzed	Analyst
Trace Elements by ICP/MS E200.8								
				(E200.2)				
Lead	2.96	1.00		ug/L	250206	1	10/23/2017 23:56	JR

Qualifiers:

- * Value exceeds maximum contaminant level
- BRL Below reporting limit
- H Holding times for preparation or analysis exceeded
- N Analyte not NELAC certified
- B Analyte detected in the associated method blank
- > Greater than Result value

- E Estimated (value above quantitation range)
- S Spike Recovery outside limits due to matrix
- Narr See case narrative
- NC Not confirmed
- < Less than Result value
- J Estimated value detected below Reporting Limit

Analytical Environmental Services, Inc

Date: 24-Oct-17

Client: Atlanta Environmental Mgmt	Client Sample ID: 4068-101717-DF-007-A
Project Name: DCSD - 4068	Collection Date: 10/17/2017 5:05:00 AM
Lab ID: 1710F39-002	Matrix: Drinking Water

Analyses	Result	Reporting Limit	Qual	Units	BatchID	Dilution Factor	Date Analyzed	Analyst
Trace Elements by ICP/MS E200.8					(E200.2)			
Lead	BRL	1.00		ug/L	250206	1	10/24/2017 00:02	JR

Qualifiers:

- * Value exceeds maximum contaminant level
- BRL Below reporting limit
- H Holding times for preparation or analysis exceeded
- N Analyte not NELAC certified
- B Analyte detected in the associated method blank
- > Greater than Result value

- E Estimated (value above quantitation range)
- S Spike Recovery outside limits due to matrix
- Narr See case narrative
- NC Not confirmed
- < Less than Result value
- J Estimated value detected below Reporting Limit

Analytical Environmental Services, Inc

Date: 24-Oct-17

Client: Atlanta Environmental Mgmt	Client Sample ID: 4068-101717-DF-007-B
Project Name: DCSD - 4068	Collection Date: 10/17/2017 5:06:00 AM
Lab ID: 1710F39-003	Matrix: Drinking Water

Analyses	Result	Reporting Limit	Qual	Units	BatchID	Dilution Factor	Date Analyzed	Analyst
Trace Elements by ICP/MS E200.8					(E200.2)			
Lead	BRL	1.00		ug/L	250206	1	10/24/2017 00:08	JR

Qualifiers:

- * Value exceeds maximum contaminant level
- BRL Below reporting limit
- H Holding times for preparation or analysis exceeded
- N Analyte not NELAC certified
- B Analyte detected in the associated method blank
- > Greater than Result value

- E Estimated (value above quantitation range)
- S Spike Recovery outside limits due to matrix
- Narr See case narrative
- NC Not confirmed
- < Less than Result value
- J Estimated value detected below Reporting Limit

Analytical Environmental Services, Inc

Date: 24-Oct-17

Client: Atlanta Environmental Mgmt	Client Sample ID: 4068-101717-DF-010-A
Project Name: DCSD - 4068	Collection Date: 10/17/2017 5:00:00 AM
Lab ID: 1710F39-004	Matrix: Drinking Water

Analyses	Result	Reporting Limit	Qual	Units	BatchID	Dilution Factor	Date Analyzed	Analyst
Trace Elements by ICP/MS E200.8					(E200.2)			
Lead	BRL	1.00		ug/L	250206	1	10/24/2017 00:15	JR

Qualifiers:

- * Value exceeds maximum contaminant level
- BRL Below reporting limit
- H Holding times for preparation or analysis exceeded
- N Analyte not NELAC certified
- B Analyte detected in the associated method blank
- > Greater than Result value

- E Estimated (value above quantitation range)
- S Spike Recovery outside limits due to matrix
- Narr See case narrative
- NC Not confirmed
- < Less than Result value
- J Estimated value detected below Reporting Limit

Analytical Environmental Services, Inc

Date: 24-Oct-17

Client: Atlanta Environmental Mgmt	Client Sample ID: 4068-101717-DF-010-B
Project Name: DCSD - 4068	Collection Date: 10/17/2017 5:01:00 AM
Lab ID: 1710F39-005	Matrix: Drinking Water

Analyses	Result	Reporting Limit	Qual	Units	BatchID	Dilution Factor	Date Analyzed	Analyst
Trace Elements by ICP/MS E200.8					(E200.2)			
Lead	BRL	1.00		ug/L	250206	1	10/24/2017 00:21	JR

Qualifiers:

- * Value exceeds maximum contaminant level
- BRL Below reporting limit
- H Holding times for preparation or analysis exceeded
- N Analyte not NELAC certified
- B Analyte detected in the associated method blank
- > Greater than Result value

- E Estimated (value above quantitation range)
- S Spike Recovery outside limits due to matrix
- Narr See case narrative
- NC Not confirmed
- < Less than Result value
- J Estimated value detected below Reporting Limit

SAMPLE/COOLER RECEIPT CHECKLIST

1. Client Name: _____

AES Work Order Number: _____

2. Carrier: FedEx UPS USPS Client Courier Other _____

	Yes	No	N/A	Details	Comments
3. Shipping container/cooler received in good condition?				damaged <input type="checkbox"/> leaking <input type="checkbox"/> other <input type="checkbox"/>	
4. Custody seals present on shipping container?					
5. Custody seals intact on shipping container?					
6. Temperature blanks present?					
7. Cooler temperature(s) within limits of 0-6°C? [See item 13 and 14 for temperature recordings.]				Cooling initiated for recently collected samples / ice present <input type="checkbox"/>	
8. Chain of Custody (COC) present?					
9. Chain of Custody signed, dated, and timed when relinquished and received?					
10. Sampler name and/or signature on COC?					
11. Were all samples received within holding time?					
12. TAT marked on the COC?				If no TAT indicated, proceeded with standard TAT per Terms & Conditions. <input type="checkbox"/>	

13. Cooler 1 Temperature _____ °C Cooler 2 Temperature _____ °C Cooler 3 Temperature _____ °C Cooler 4 Temperature _____ °C
 Cooler 5 Temperature _____ °C Cooler 6 Temperature _____ °C Cooler 7 Temperature _____ °C Cooler 8 Temperature _____ °C

15. Comments: _____

I certify that I have completed sections 1-15 (dated initials). _____

	Yes	No	N/A	Details	Comments
16. Were sample containers intact upon receipt?					
17. Custody seals present on sample containers?					
18. Custody seals intact on sample containers?					
19. Do sample container labels match the COC?				incomplete info <input type="checkbox"/> illegible <input type="checkbox"/> no label <input type="checkbox"/> other <input type="checkbox"/>	
20. Are analyses requested indicated on the COC?					
21. Were all of the samples listed on the COC received?				samples received but not listed on COC <input type="checkbox"/> samples listed on COC not received <input type="checkbox"/>	
22. Was the sample collection date/time noted?					
23. Did we receive sufficient sample volume for indicated analyses?					
24. Were samples received in appropriate containers?					
25. Were VOA samples received without headspace (< 1/4" bubble)?					
26. Were trip blanks submitted?				listed on COC <input type="checkbox"/> not listed on COC <input type="checkbox"/>	

27. Comments: _____

I certify that I have completed sections 16-27 (dated initials). _____

	Yes	No	N/A	Details	Comments
28. Have containers needing chemical preservation been checked? *					
29. Containers meet preservation guidelines?					
30. Was pH adjusted at Sample Receipt?					

I certify that I have completed sections 28-30 (dated initials). _____

Client: Atlanta Environmental Mgmt
Project Name: DCSD - 4068
Workorder: 1710F39

ANALYTICAL QC SUMMARY REPORT

BatchID: 250206

Sample ID: MB-250206	Client ID:	Units: ug/L	Prep Date: 10/20/2017	Run No: 355071							
SampleType: MBLK	TestCode: Trace Elements by ICP/MS E200.8	BatchID: 250206	Analysis Date: 10/23/2017	Seq No: 7816216							
Analyte	Result	RPT Limit	SPK value	SPK Ref Val	%REC	Low Limit	High Limit	RPD Ref Val	%RPD	RPD Limit	Qual

Lead BRL 1.00

Sample ID: LCS-250206	Client ID:	Units: ug/L	Prep Date: 10/20/2017	Run No: 355071							
SampleType: LCS	TestCode: Trace Elements by ICP/MS E200.8	BatchID: 250206	Analysis Date: 10/23/2017	Seq No: 7816217							
Analyte	Result	RPT Limit	SPK value	SPK Ref Val	%REC	Low Limit	High Limit	RPD Ref Val	%RPD	RPD Limit	Qual

Lead 88.66 1.00 100.0 88.7 85 115

Sample ID: 1710F29-001AMS	Client ID:	Units: ug/L	Prep Date: 10/20/2017	Run No: 355071							
SampleType: MS	TestCode: Trace Elements by ICP/MS E200.8	BatchID: 250206	Analysis Date: 10/23/2017	Seq No: 7816219							
Analyte	Result	RPT Limit	SPK value	SPK Ref Val	%REC	Low Limit	High Limit	RPD Ref Val	%RPD	RPD Limit	Qual

Lead 91.67 1.00 100.0 0.9632 90.7 70 130

Sample ID: 1710F29-011AMS	Client ID:	Units: ug/L	Prep Date: 10/20/2017	Run No: 355071							
SampleType: MS	TestCode: Trace Elements by ICP/MS E200.8	BatchID: 250206	Analysis Date: 10/23/2017	Seq No: 7816222							
Analyte	Result	RPT Limit	SPK value	SPK Ref Val	%REC	Low Limit	High Limit	RPD Ref Val	%RPD	RPD Limit	Qual

Lead 88.14 1.00 100.0 0.5291 87.6 70 130

Sample ID: 1710F29-001AMSD	Client ID:	Units: ug/L	Prep Date: 10/20/2017	Run No: 355071							
SampleType: MSD	TestCode: Trace Elements by ICP/MS E200.8	BatchID: 250206	Analysis Date: 10/23/2017	Seq No: 7816220							
Analyte	Result	RPT Limit	SPK value	SPK Ref Val	%REC	Low Limit	High Limit	RPD Ref Val	%RPD	RPD Limit	Qual

Lead 93.98 1.00 100.0 0.9632 93.0 70 130 91.67 2.49 20

Qualifiers: > Greater than Result value < Less than Result value B Analyte detected in the associated method blank
 BRL Below reporting limit E Estimated (value above quantitation range) H Holding times for preparation or analysis exceeded
 J Estimated value detected below Reporting Limit N Analyte not NELAC certified R RPD outside limits due to matrix
 Rpt Lim Reporting Limit S Spike Recovery outside limits due to matrix

ATTACHMENT C
Excerpt from Pace Analytical Laboratory Report



PACE ANALYTICAL SERVICES, INC.

Environmental Monitoring & Laboratory Analysis
110 Technology Parkway, Peachtree Corners, GA 30092
(770) 734-4200 FAX (770) 734-4201

Laboratory Report

Prepared For:

**DeKalb County Public Works - Doraville
4830 Winters Chapel Rd
Doraville, GA 30360**

Attention: Ms. Jody Shoemaker

Report Number: AZJ0557

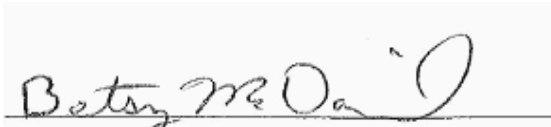
October 28, 2016

Project: School Board

Project #:[none]

We appreciate the opportunity to provide the analytical support for your project. The analytical results in this report are based upon information supplied by you, the client, and are for your exclusive use. If you have any questions regarding this data package, please do not hesitate to call.

Approved:



Betsy McDaniel
Project Manager

This report may not be reproduced, except in full, without written approval from Pace Analytical Services, Inc. Pace Analytical Services, Inc. certifies that the following analytical results meet all requirements of the National Environmental Laboratory Accreditation Conference(NELAC).
All test results relate only to the samples analyzed.



PACE ANALYTICAL SERVICES, INC.

Environmental Monitoring & Laboratory Analysis
110 Technology Parkway, Peachtree Corners, GA 30092
(770) 734-4200 FAX (770) 734-4201

DeKalb County Public Works - Doraville
4830 Winters Chapel Rd
Doraville GA, 30360
Attention: Ms. Jody Shoemaker

October 28, 2016

Report No.: AZJ0557

Project: School Board

Client ID: 32-Stoneview Elem

Lab Number ID: AZJ0557-02

Date/Time Sampled: 10/18/2016 5:48:00AM

Date/Time Received: 10/20/2016 8:35:00AM

Matrix: Drinking Water

Analyte	Result	RL	Units	Method	Qual.	DF	Preparation Date	Analytical Date	Batch	Init.
Metals, Total										
Lead	0.0210	0.0030	mg/L	EPA 200.8		1	10/27/16 14:00	10/27/16 15:06	6100730	CSW



PACE ANALYTICAL SERVICES, INC.

Environmental Monitoring & Laboratory Analysis
 110 Technology Parkway, Peachtree Corners, GA 30092
 (770) 734-4200 FAX (770) 734-4201

DeKalb County Public Works - Doraville
 4830 Winters Chapel Rd
 Doraville GA, 30360
 Attention: Ms. Jody Shoemaker

October 28, 2016

Report No.: AZJ0557

Metals, Total - Quality Control

Analyte	Result	Reporting Limit	Units	Spike Level	Source Result	%REC	%REC Limits	RPD	RPD Limit	Qual
Batch 6100706 - EPA 200.8										
Blank (6100706-BLK1)					Prepared: 10/27/16 Analyzed: 10/28/16					
Lead	ND	0.0030	mg/L							
LCS (6100706-BS1)					Prepared: 10/27/16 Analyzed: 10/28/16					
Lead	0.103	0.0030	mg/L	0.10000		103	85-115			
Matrix Spike (6100706-MS1)					Source: AZJ0557-03 Prepared: 10/27/16 Analyzed: 10/28/16					
Lead	0.103	0.0030	mg/L	0.10000	0.0016	101	70-130			
Post Spike (6100706-PS1)					Source: AZJ0557-03 Prepared: 10/27/16 Analyzed: 10/28/16					
Lead	101		ug/L	100.00	1.59	99	85-115			
Batch 6100730 - EPA 200.8										
Blank (6100730-BLK1)					Prepared & Analyzed: 10/27/16					
Lead	ND	0.0030	mg/L							
LCS (6100730-BS1)					Prepared & Analyzed: 10/27/16					
Lead	0.0920	0.0030	mg/L	0.10000		92	85-115			
Matrix Spike (6100730-MS1)					Source: AZJ0557-01 Prepared & Analyzed: 10/27/16					
Lead	0.0970	0.0030	mg/L	0.10000	0.0024	95	70-130			



PACE ANALYTICAL SERVICES, INC.

Environmental Monitoring & Laboratory Analysis
110 Technology Parkway, Peachtree Corners, GA 30092
(770) 734-4200 FAX (770) 734-4201

DeKalb County Public Works - Doraville
4830 Winters Chapel Rd
Doraville GA, 30360
Attention: Ms. Jody Shoemaker

October 28, 2016

Laboratory Certifications

Code	Description	Number	Expires
GADW	Georgia DW Inorganics Eff: 07/01/2016	812	06/30/2017
NELDW	FL DOH NELAC (Drinking Water) Eff: 07/01/2016	E87315	06/30/2017



DeKalb County Public Works - Doraville
4830 Winters Chapel Rd
Doraville GA, 30360
Attention: Ms. Jody Shoemaker

PACE ANALYTICAL SERVICES, INC.

Environmental Monitoring & Laboratory Analysis
110 Technology Parkway, Peachtree Corners, GA 30092
(770) 734-4200 FAX (770) 734-4201

October 28, 2016

Legend

Definition of Laboratory Terms

ND - None Detected at the Reporting Limit

TIC - Tentatively Identified Compound

CFU - Colony Forming Units

SOP - Method run per Pace Standard Operating Procedure

RL - Reporting Limit

DF - Dilution Factor

* - Analyte not included in the NELAC list of certified analytes.

Sample Information

N-Nitrosodiphenylamine breaks down to diphenylamine in the GCMS; both analytes are reported as N-Nitrosodiphenylamine. Pace is not NELAC certified for diphenylamine.

Phthalic acid and phthalic anhydride are reported as dimethyl phthalate

Maleic acid and maleic anhydride are reported as dimethyl malate

1,2-Diphenylhydrazine breaks down to azobenzene in the GCMS; both analytes are reported as azobenzene

Definition of Qualifiers

Note: Unless otherwise noted, all results are reported on an as received basis.

CHAIN OF CUSTODY RECORD



Pace Analytical Services, Inc
 110 TECHNOLOGY PARKWAY, PEACHTREE CORNERS, GA 30092
 (770) 734-4200 : FAX (770) 734-4201

PAGE: _____ OF _____

CLIENT NAME: DeKalb County Watershed					ANALYSIS REQUESTED										L A B I D N U M B E R	CONTAINER TYPE		PRESERVATION									
CLIENT ADDRESS/PHONE NUMBER/FAX NUMBER: 4830 Winters Chapel Rd					CONTAINER TYPE	PRESERVATION	# of									P	A	B	1	2							
REPORT TO: S. Shoemaker					CC:					C O N T A I N E R S ↓	Lead/EPA 200.8											*MATRIX CODES:					
REQUESTED COMPLETION DATE: 10/28/16					PO #: 1028490																	DW - DRINKING WATER S - SOIL					
PROJECT NAME/STATE: School board																						MW - WASTEWATER SL - SLUDGE					
PROJECT #:																						GW - GROUNDWATER SD - SOLID					
Collection DATE	Collection TIME	MATRIX CODE*	C O M P	G R A B	SAMPLE IDENTIFICATION																	SW - SURFACE WATER A - AIR					
															ST - STORM WATER L - LIQUID												
															W - WATER P - PRODUCT												
															REMARKS/ADDITIONAL INFORMATION												
10-18-16	6:13	DW	X		33 - Dresden Elementary							1	1											1			
10-18-16	5:48	DW	X		32 - Stencyr W Elem							1	1											2			
10-19-16	5:54	DW	X		35 - Kelly Lake Elem					1	1											3					
10-19-16	5:56	DW	X		34 - Montgomery Elem					1	1											4					
10-20-16	6:11	DW	X		37 - Oakcliff Elem					1	1											5					
10-20-16	6:09	DW	X		36 - Snapfinger Elem					1	1											6					
SAMPLED BY AND TITLE: Betty J Logan Lab Tech Sr					DATE/TIME: 10-20-16 6:55					RELINQUISHED BY: Betty J Logan					DATE/TIME: 10-20-16 8:35					FOR LAB USE ONLY							
RECEIVED BY: Kauler Feutz					DATE/TIME: 10/20/16 0835					SAMPLE SHIPPED VIA: UPS FED-EX USPS COURIER CLIENT OTHER FS					LAB #: AZT0597					Entered into LIMS: CH							
RECEIVED BY LAB: Kauler Feutz					DATE/TIME: 10/20/16 0835					CUSTODY SEAL: Intact Broken Not Present					Cooler ID:					Tracking #:							
Checked: Yes No NA					Ice: Yes No NA					Temperature: 12 Min 12 Max					# of Coolers:												

12 OF 12



PACE ANALYTICAL SERVICES, INC.

Environmental Monitoring & Laboratory Analysis
110 Technology Parkway, Peachtree Corners, GA 30092
(770) 734-4200 FAX (770) 734-4201

LOG-IN CHECKLIST

Printed: 10/28/2016 4:03:14PM

Attn: Ms. Jody Shoemaker

Client: DeKalb County Public Works - Doraville

Project: School Board

Date Received: 10/20/16 08:35

Work Order: AZJ0557

Logged In By: Charles Hawks

OBSERVATIONS

#Samples: 6

#Containers: 6

Minimum Temp(C): 12.0

Maximum Temp(C): 12.0

Custody Seal(s) Used: N/A

CHECKLIST ITEMS

- COC included with Samples YES
- Sample Container(s) Intact YES
- Chain of Custody Complete YES
- Sample Container(s) Match COC YES
- Custody seal Intact NO
- Temperature in Compliance YES
- Sufficient Sample Volume for Analysis YES
- Zero Headspace Maintained for VOA Analyses YES
- Samples labeled preserved (If Applicable) YES
- Samples received within Allowable Hold Times YES
- Samples Received on Ice NO
- Preservation Confirmed YES

Comments:



November 3, 2016

Via E-Mail: Joshua_I_williams@dekalbschoolsga.org

Mr. Joshua L. Williams, MBA, MSM, PMP
Chief Operations Officer
DeKalb County School District
Operations Division
Sam Moss Service Center
1780 Montreal Road
Tucker, Georgia 30084

**Re: Lead in Drinking Water Sample Results
Stoneview Elementary School (Facility ID #4068)
2629 Huber Street, Lithonia, Georgia 30058
AEM Project No. 1561-1601**

Dear Mr. Williams:

Atlanta Environmental Management, Inc. (AEM) is pleased to provide the DeKalb County School District (DCSD) an electronic copy of the Lead in Drinking Water Sample Results for Stoneview Elementary School (Facility ID #4068). Samples were collected on October 18, 2016, and analytical results were received from Analytical Environmental Services, Inc., on November 1, 2016.

FINDINGS

AEM collected 56 drinking water samples from 28 sources at Stoneview Elementary School (Facility ID #4068), including two duplicate samples. A description of the drinking water outlets sampled and a summary of sample analytical results are provided in the attached table.


None of the samples collected and analyzed contained lead at a concentration equal to or above EPA's action level of 15 parts per billion.

We appreciate your selection of AEM for this project. If you have any questions, please do not hesitate to contact us.

Sincerely,

Atlanta Environmental Management, Inc.


Leona Miles, CHMM
Senior Project Manager


Janet T. Hart
President

/krf

cc: Daniel Drake (DCSD)
Tracee Hill (DCSD)
Sandra Glen (DeKalb County Watershed Management)
Ryan Cira (DeKalb Board of Health)

Attachment: Table

Table 1. Summary of Lead in Drinking Water Laboratory Analytical Results

Stoneview Elementary School

2629 Huber Street, Lithonia, GA 30058



Sample ID*	Sample Location Description	Sample Date & Time	Lead Test Results (ppb)
4068-101816-DF-001-A	Initial Draw Sample; Upper Left Elkay Drinking Fountain in Hallway near Rm 19	10/18/16 5:33 AM	None Detected
4068-101816-DF-001-B	Flush Sample; Upper Left Elkay Drinking Fountain in Hallway near Rm 19	10/18/16 5:34 AM	None Detected
4068-101816-DF-002-A	Initial Draw Sample; Lower Right Elkay Drinking Fountain in Hallway near Rm 19	10/18/16 5:36 AM	None Detected
4068-101816-DF-002-B	Flush Sample; Lower Right Elkay Drinking Fountain in Hallway near Rm 19	10/18/16 5:37 AM	None Detected
4068-101816-DF-003-A	Initial Draw Sample; Lower Left Elkay Drinking Fountain in Hallway near Boy's RR 8.1	10/18/16 5:44 AM	None Detected
4068-101816-DF-003-B	Flush Sample; Lower Left Elkay Drinking Fountain in Hallway near Boy's RR 8.1	10/18/16 5:45 AM	None Detected
4068-101816-DF-004-A	Initial Draw Sample; Upper Right Elkay Drinking Fountain in Hallway near Boy's RR 8.1	10/18/16 5:46 AM	None Detected
4068-101816-DF-004-B	Flush Sample; Upper Right Elkay Drinking Fountain in Hallway near Boy's RR 8.1	10/18/16 5:47 AM	None Detected
4068-101816-DF-005-A	Initial Draw Sample; Single Wall Mounted Elkay Drinking Fountain in Hallway near Rm 3	10/18/16 4:59 AM	None Detected
4068-101816-DF-005-B	Flush Sample; Single Wall Mounted Elkay Drinking Fountain in Hallway near Rm 3	10/18/16 5:00 AM	None Detected
4068-101816-DF-006-A	Initial Draw Sample; Single Wall Mounted Elkay Drinking Fountain in Hallway near Rm 5	10/18/16 5:19 AM	None Detected
4068-101816-DF-006-B	Flush Sample; Single Wall Mounted Elkay Drinking Fountain in Hallway near Rm 5	10/18/16 5:20 AM	None Detected
4068-101816-DF-008-A	Initial Draw Sample; Lower Left Elkay Drinking Fountain in Hallway near Rm 107	10/18/16 5:36 AM	None Detected
4068-101816-DF-008-B	Flush Sample; Lower Left Elkay Drinking Fountain in Hallway near Rm 107	10/18/16 5:37 AM	None Detected
4068-101816-DF-009-A	Initial Draw Sample; Lower Left Elkay Drinking Fountain in Hallway near Girl's RR 116.2	10/18/16 5:25 AM	None Detected
4068-101816-DF-009-B	Flush Sample; Lower Left Elkay Drinking Fountain in Hallway near Girl's RR 116.2	10/18/16 5:26 AM	None Detected
4068-101816-DF-011-A	Initial Draw Sample; Upper Right Oasis Drinking Fountain in Hallway near Women's RR 211.2	10/18/16 5:44 AM	None Detected
4068-101816-DF-011-B	Flush Sample; Upper Right Oasis Drinking Fountain in Hallway near Women's RR 211.2	10/18/16 5:45 AM	None Detected
4068-101816-DF-012-A	Initial Draw Sample; Lower Left Oasis Drinking Fountain in Hallway near Men's RR 211.1	10/18/16 5:46 AM	None Detected
4068-101816-DF-012-B	Flush Sample; Lower Left Oasis Drinking Fountain in Hallway near Men's RR 211.1	10/18/16 5:47 AM	None Detected
4068-101816-DF-013-A	Initial Draw Sample; Lower Left Elkay Drinking Fountain in Gym	10/18/16 5:25 AM	None Detected
4068-101816-DF-013-B	Flush Sample; Lower Left Elkay Drinking Fountain in Gym	10/18/16 5:26 AM	None Detected
4068-101816-DF-014-A	Initial Draw Sample; Upper Right Elkay Drinking Fountain in Gym	10/18/16 5:29 AM	None Detected
4068-101816-DF-014-B	Flush Sample; Upper Right Elkay Drinking Fountain in Gym	10/18/16 5:30 AM	None Detected
4068-101816-DF-015-A	Initial Draw Sample; Elkay Drinking Fountain in Cafeteria near Entrance to Kitchen	10/18/16 5:15 AM	2.39
4068-101816-DF-015-B	Flush Sample; Elkay Drinking Fountain in Cafeteria near Entrance to Kitchen	10/18/16 5:16 AM	2.03
4068-101816-KS-001-A	Initial Draw Sample; Sink with Bubbler in Rm 3; Faucet Dripping; Sampled from Bubbler	10/18/16 5:03 AM	None Detected

Table 1. Summary of Lead in Drinking Water Laboratory Analytical Results

Stoneview Elementary School

2629 Huber Street, Lithonia, GA 30058



Sample ID*	Sample Location Description	Sample Date & Time	Lead Test Results (ppb)
4068-101816-KS-001-B	Flush Sample; Sink with Bubblers in Rm 3; Faucet Dripping; Sampled from Bubblers	10/18/16 5:04 AM	None Detected
4068-101816-KS-002-A	Initial Draw Sample; Sink with Bubblers in Rm 4; Sampled from Bubblers	10/18/16 5:09 AM	None Detected
4068-101816-KS-002-B	Flush Sample; Sink with Bubblers in Rm 4; Sampled from Bubblers	10/18/16 5:10 AM	None Detected
4068-101816-KS-003-A	Initial Draw Sample; Sink with Bubblers in Rm 5; Sampled from Bubblers	10/18/16 5:15 AM	None Detected
4068-101816-KS-003-B	Flush Sample; Sink with Bubblers in Rm 5; Sampled from Bubblers	10/18/16 5:16 AM	None Detected
4068-101816-KS-004-A	Initial Draw Sample; Sink with Bubblers in Rm 6; Sampled from Faucet; Bubblers inoperable	10/18/16 5:25 AM	None Detected
4068-101816-KS-004-B	Flush Sample; Sink with Bubblers in Rm 6; Sampled from Faucet; Bubblers inoperable	10/18/16 5:26 AM	None Detected
4068-101816-KS-005-A	Initial Draw Sample; Sink with Bubblers in Rm 13; Sampled from Bubblers	10/18/16 5:34 AM	None Detected
4068-101816-KS-005-B	Flush Sample; Sink with Bubblers in Rm 13; Sampled from Bubblers	10/18/16 5:35 AM	None Detected
4068-101816-KS-006-A	Initial Draw Sample; Sink with Bubblers in Rm 14; Bubblers inoperable, Sampled from Faucet	10/18/16 5:30 AM	None Detected
4068-101816-KS-006-B	Flush Sample; Sink with Bubblers in Rm 14; Bubblers inoperable, Sampled from Faucet	10/18/16 5:32 AM	None Detected
4068-101816-KS-007-A	Initial Draw Sample; Sink with no Bubblers in Rm 207; Faucet Dripping; sampled from Faucet	10/18/16 4:58 AM	None Detected
4068-101816-KS-007-B	Flush Sample; Sink with no Bubblers in Rm 207; Faucet Dripping; Faucet Dripping; sampled from Faucet	10/18/16 4:59 AM	None Detected
4068-101816-KS-008-A	Initial Draw Sample; Sink with no Bubblers in Rm 210; Faucet Dripping; sampled from Faucet	10/18/16 5:03 AM	None Detected
4068-101816-KS-008-B	Flush Sample; Sink with no Bubblers in Rm 210; Faucet Dripping; sampled from Faucet	10/18/16 5:04 AM	None Detected
4068-101816-KS-009-A	Initial Draw Sample; Sink with no Bubblers in Rm 211; Faucet Dripping; sampled from Faucet	10/18/16 5:09 AM	None Detected
4068-101816-KS-009-B	Flush Sample; Sink with no Bubblers in Rm 211; Faucet Dripping; sampled from Faucet	10/18/16 5:10 AM	None Detected
4068-101816-KS-010-A	Initial Draw Sample; Sink with no Bubblers in Rm 214; Faucet Dripping; sampled from Faucet	10/18/16 5:13 AM	None Detected
4068-101816-KS-010-B	Flush Sample; Sink with no Bubblers in Rm 214; Faucet Dripping; sampled from Faucet	10/18/16 5:14 AM	None Detected
4068-101816-RS-001-A	Initial Draw Sample; Rightmost Sink in Boy's RR 116.1	10/18/16 5:21 AM	None Detected
4068-101816-RS-001-B	Flush Sample; Rightmost Sink in Boy's RR 116.1	10/18/16 5:22 AM	None Detected
4068-101816-CS-001-A	Initial Draw Sample; Food Prep Sink near Ice Machine; faucet Dripping	10/18/16 4:56 AM	None Detected
4068-101816-CS-001-B	Flush Sample; Food Prep Sink near Ice Machine; faucet Dripping	10/18/16 4:57 AM	None Detected

Table 1. Summary of Lead in Drinking Water Laboratory Analytical Results

Stoneview Elementary School

2629 Huber Street, Lithonia, GA 30058



Sample ID*	Sample Location Description	Sample Date & Time	Lead Test Results (ppb)
4068-101816-TL-001-A	Initial Draw Sample; Sink in Teacher's Lounge Rm 17.6 near Entrance	10/18/16 4:55 AM	None Detected
4068-101816-TL-001-B	Flush Sample; Sink in Teacher's Lounge Rm 17.6 near Entrance	10/18/16 4:56 AM	None Detected
4068-101816-IM-001-A	Initial Draw Sample; Scotsman Ice Machine to Right of Food Prep Sink	10/18/16 5:00 AM	None Detected
4068-101816-SC-001-A	Service Connection Line at Huber Street. Meter on right side.	10/18/16 5:48 AM	**

Notes:

ppb-parts per billion

Bold-Exceeds 15 ppb--EPA's Action Level for Lead

* Note--Where "A" and "B" are indicated, AEM collected two samples at each source area location: ("A") initial draw sample; and ("B") after a 30-second flush sample

**Inconclusive Sample Result; Resampling is Underway