



October 26, 2017

Via E-Mail: Joshua_I_williams@dekalbschoolsga.org

Mr. Joshua L. Williams, MBA, MSM, PMP
Chief Operations Officer
DeKalb County School District
Operations Division
Sam Moss Service Center
1780 Montreal Road
Tucker, Georgia 30084

**Re: Summary of Additional Lead in Drinking Water Sample Results
Stephenson High School (Facility ID #0497)
701 Stephenson Road, Stone Mountain, Georgia 30087
AEM Project No. 1561-1601**

Dear Mr. Williams:

Atlanta Environmental Management, Inc. (AEM) is pleased to provide the DeKalb County School District (DCSD) an electronic copy of the Lead in Drinking Water Sample Results for Stephenson High School (Facility ID #0497). Additional drinking water samples from select source units were collected on October 13, 2017, and analytical results were received from Analytical Environmental Services, Inc., on October 25, 2017.

FINDINGS

Sample Results of Previously Identified Source Units That Exceeded 15 ppb

During the initial sampling event on April 27, 2017, one source unit was sampled and the analytical results indicated that one or more of the results were above EPA's action level of 15 ppb. DCSD replaced the source unit and AEM collected two drinking water samples on October 13, 2017.

None of the samples collected contained lead at a concentration exceeding EPA's action level of 15 ppb. A description of the drinking water outlet sampled and a summary of sample analytical results are provided in Table 1.

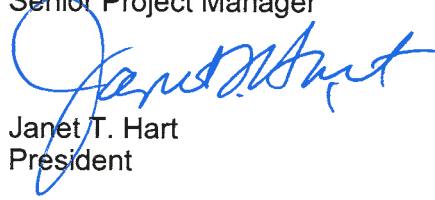
We appreciate your selection of AEM for this project. If you have any questions, please do not hesitate to contact us.

Sincerely,

Atlanta Environmental Management, Inc.



Leona Miles, CHMM
Senior Project Manager



Janet T. Hart
President

/krf

cc: Daniel Drake (DCSD)
Tracee Hill (DCSD)
Sandra Glenn (DeKalb County Watershed Management)
Ryan Cira (DeKalb Board of Health)

Attachment: Table

Table 1. Summary of Lead in Drinking Water Laboratory Analytical Retest Results

Stephenson High School
701 Stephenson Road, Stone Mountain, GA 30087



Sample ID*	Sample Location Description	Sample Date & Time	Lead Test Results (ppb)
0497-101317-CS-005-A	Initial Draw Sample; Retest Sink at Back Right Labeled Sink 5 in Rm 310	10/13/17 5:27 AM	12.1
0497-101317-CS-005-B	Flush Sample; Retest Sink at Back Right Labeled Sink 5 in Rm 310	10/13/17 5:28 AM	1.33

Notes:

ppb-parts per billion

Bold-Exceeds 15 ppb--EPA's Action Level for Lead

* Note--Where "A" and "B" are indicated, AEM collected two samples at each source area location: ("A") initial draw sample; and ("B") after a 30-second flush sample

**The source unit was initially sampled on 4/27/17 and the initial results indicated that a concentration exceeded the EPA standard of 15 ppb. The source unit was replaced by DCSD and retesting was conducted. The above summarizes the retest results.



May 15, 2017

Via E-Mail: Joshua_I_williams@dekalbschoolsga.org

Mr. Joshua L. Williams, MBA, MSM, PMP
Chief Operations Officer
DeKalb County School District
Operations Division
Sam Moss Service Center
1780 Montreal Road
Tucker, Georgia 30084

**Re: Lead in Drinking Water Sample Results
Stephenson High School (Facility ID #0497)
701 Stephenson Road, Stone Mountain, Georgia 30087
AEM Project No. 1561-1601**

Dear Mr. Williams:

Atlanta Environmental Management, Inc. (AEM) is pleased to provide the DeKalb County School District (DCSD) an electronic copy of the Lead in Drinking Water Sample Results for Stephenson High School (Facility ID #0497). Samples were collected on April 27, 2017, and analytical results were received from Analytical Environmental Services, Inc., on May 11, 2017.

FINDINGS

AEM collected 88 drinking water samples from 44 sources at Stephenson High School (Facility ID #0497), including two duplicate samples. A description of the drinking water outlets sampled and a summary of sample analytical results are provided in the attached table.

One of the sources sampled had a drinking water sample result that contained lead at a concentration at or above EPA's action level of 15 parts per billion. This source is indicated in bold and shaded font in the attached table.

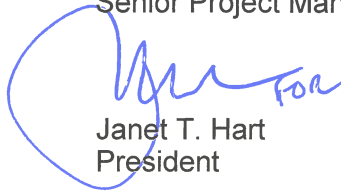
We appreciate your selection of AEM for this project. If you have any questions, please do not hesitate to contact us.

Sincerely,

Atlanta Environmental Management, Inc.



Leona Miles, CHMM
Senior Project Manager



Janet T. Hart
President

/krf

cc: Daniel Drake (DCSD)
Tracee Hill (DCSD)
Sandra Glenn (DeKalb County Watershed Management)
Ryan Cira (DeKalb Board of Health)

Attachment: Table

Table 1. Summary of Lead in Drinking Water Laboratory Analytical Results

Stephenson High School

701 Stephenson Road, Stone Mountain, GA 30087



Sample ID*	Sample Location Description	Sample Date & Time	Lead Test Results (ppb)
0497-042717-DF-002-A	Initial Draw Sample; Upper Right Oasis Drinking Fountain in Hallway near Band Rm; Wall-mounted	04/27/17 5:23 AM	1.25
0497-042717-DF-002-B	Flush Sample; Upper Right Oasis Drinking Fountain in Hallway near Band Rm; Wall-mounted	04/27/17 5:24 AM	5.14
0497-042717-DF-003-A	Initial Draw Sample; Lower Left Oasis Drinking Fountain in Hallway near Band Rm; Wall-mounted	04/27/17 5:25 AM	1.14
0497-042717-DF-003-B	Flush Sample; Lower Left Oasis Drinking Fountain in Hallway near Band Rm; Wall-mounted	04/27/17 5:26 AM	1.48
0497-042717-DF-004-A	Initial Draw Sample; Right Oasis Drinking Fountain in Hallway near Girl's Locker Rm; Wall-mounted	04/27/17 5:43 AM	None Detected
0497-042717-DF-004-B	Flush Sample; Right Oasis Drinking Fountain in Hallway near Girl's Locker Rm; Wall-mounted	04/27/17 5:44 AM	None Detected
0497-042717-DF-005-A	Initial Draw Sample; Left Oasis Drinking Fountain in Hallway near Girl's Locker Rm; Wall-mounted	04/27/17 5:41 AM	None Detected
0497-042717-DF-005-B	Flush Sample; Left Oasis Drinking Fountain in Hallway near Girl's Locker Rm; Wall-mounted	04/27/17 5:42 AM	1.87
0497-042717-DF-006-A	Initial Draw Sample; Single Elkay Drinking Fountain in Hallway near Boy's Locker Rm; Wall-mounted	04/27/17 5:35 AM	1.23
0497-042717-DF-006-B	Flush Sample; Single Elkay Drinking Fountain in Hallway near Boy's Locker Rm; Wall-mounted	04/27/17 5:36 AM	1.11
0497-042717-DF-007-A	Initial Draw Sample; Lower Left Elkay Drinking Fountain in the Hallway Behind Gym Stage; Wall-mounted	04/27/17 5:50 AM	None Detected
0497-042717-DF-007-B	Flush Sample; Lower Left Elkay Drinking Fountain in the Hallway Behind Gym Stage; Wall-mounted	04/27/17 5:51 AM	None Detected
0497-042717-DF-008-A	Initial Draw Sample; Upper Right Elkay Drinking Fountain in the Hallway Behind Gym Stage; Wall-mounted	04/27/17 5:52 AM	None Detected
0497-042717-DF-008-B	Flush Sample; Upper Right Elkay Drinking Fountain in the Hallway Behind Gym Stage; Wall-mounted	04/27/17 5:53 AM	None Detected
0497-042717-DF-009-A	Initial Draw Sample; Upper Right Elkay Drinking Fountain in Hallway across Hall from Main Entrance; Wall-mounted	04/27/17 4:56 AM	None Detected
0497-042717-DF-009-B	Flush Sample; Upper Right Elkay Drinking Fountain in Hallway across Hall from Main Entrance; Wall-mounted	04/27/17 4:57 AM	None Detected

Table 1. Summary of Lead in Drinking Water Laboratory Analytical Results

Stephenson High School

701 Stephenson Road, Stone Mountain, GA 30087



Sample ID*	Sample Location Description	Sample Date & Time	Lead Test Results (ppb)
0497-042717-DF-010-A	Initial Draw Sample; Lower Left Elkay Drinking Fountain in Hallway across Hall from Main Entrance; Wall-mounted	04/27/17 4:58 AM	None Detected
0497-042717-DF-010-B	Flush Sample; Lower Left Elkay Drinking Fountain in Hallway across Hall from Main Entrance; Wall-mounted	04/27/17 4:59 AM	None Detected
0497-042717-DF-011-A	Initial Draw Sample; Lower Left Oasis Drinking Fountain in Hallway next to Storage Rm 310.4 per Map and Side Café Entrance; Wall-mounted	04/27/17 5:07 AM	None Detected
0497-042717-DF-011-B	Flush Sample; Lower Left Oasis Drinking Fountain in Hallway next to Storage Rm 310.4 per Map and Side Café Entrance; Wall-mounted	04/27/17 5:08 AM	None Detected
0497-042717-DF-012-A	Initial Draw Sample; Upper Right Elkay Drinking Fountain in Hallway next to Storage Rm 310.4 per Map and Side Café Entrance; Wall-mounted	04/27/17 5:09 AM	None Detected
0497-042717-DF-012-B	Flush Sample; Upper Right Elkay Drinking Fountain in Hallway next to Storage Rm 310.4 per Map and Side Café Entrance; Wall-mounted	04/27/17 5:10 AM	None Detected
0497-042717-DF-013-A	Initial Draw Sample; Upper Right Oasis Drinking Fountain in Hallway Between RR's at Media Center Entrance; Wall-mounted	04/27/17 5:20 AM	None Detected
0497-042717-DF-013-B	Flush Sample; Upper Right Oasis Drinking Fountain in Hallway Between RR's at Media Center Entrance; Wall-mounted	04/27/17 5:21 AM	None Detected
0497-042717-DF-014-A	Initial Draw Sample; Lower Left Oasis Drinking Fountain in Hallway Between RR's at Media Center Entrance; Wall-mounted	04/27/17 5:22 AM	None Detected
0497-042717-DF-014-B	Flush Sample; Lower Left Oasis Drinking Fountain in Hallway Between RR's at Media Center Entrance; Wall-mounted	04/27/17 5:23 AM	None Detected
0497-042717-DF-015-A	Initial Draw Sample; Upper Right Oasis Drinking Fountain in Hallway across from Rm 501; Wall-mounted	04/27/17 5:37 AM	None Detected
0497-042717-DF-015-B	Flush Sample; Upper Right Oasis Drinking Fountain in Hallway across from Rm 501; Wall-mounted	04/27/17 5:38 AM	None Detected
0497-042717-DF-016-A	Initial Draw Sample; Lower Left Elkay Drinking Fountain in Hallway across from Rm 501; Wall-mounted	04/27/17 5:35 AM	None Detected
0497-042717-DF-016-B	Flush Sample; Lower Left Elkay Drinking Fountain in Hallway across from Rm 501; Wall-mounted	04/27/17 5:36 AM	None Detected
0497-042717-DF-017-A	Initial Draw Sample; Lower Left Oasis Drinking Fountain in Hallway to Right of Rm 108; Wall-mounted	04/27/17 5:20 AM	None Detected
0497-042717-DF-017-B	Flush Sample; Lower Left Oasis Drinking Fountain in Hallway to Right of Rm 108; Wall-mounted	04/27/17 5:21 AM	None Detected

Table 1. Summary of Lead in Drinking Water Laboratory Analytical Results

Stephenson High School

701 Stephenson Road, Stone Mountain, GA 30087



Sample ID*	Sample Location Description	Sample Date & Time	Lead Test Results (ppb)
0497-042717-DF-018-A	Initial Draw Sample; Upper Right Oasis Drinking Fountain in Hallway to Right of Rm 108; Wall-mounted	04/27/17 5:22 AM	None Detected
0497-042717-DF-018-B	Flush Sample; Upper Right Oasis Drinking Fountain in Hallway to Right of Rm 108; Wall-mounted	04/27/17 5:23 AM	None Detected
0497-042717-DF-019-A	Initial Draw Sample; Upper Right Oasis Drinking Fountain in Hallway to Right of Rm 956; Wall-mounted	04/27/17 5:51 AM	None Detected
0497-042717-DF-019-B	Flush Sample; Upper Right Oasis Drinking Fountain in Hallway to Right of Rm 956; Wall-mounted	04/27/17 5:52 AM	None Detected
0497-042717-DF-020-A	Initial Draw Sample; Lower Left Oasis Drinking Fountain in Hallway to Right of Rm 956; Wall-mounted	04/27/17 5:53 AM	None Detected
0497-042717-DF-020-B	Flush Sample; Lower Left Oasis Drinking Fountain in Hallway to Right of Rm 956; Wall-mounted	04/27/17 5:54 AM	None Detected
0497-042717-DF-021-A	Initial Draw Sample; Upper Right Oasis Drinking Fountain in Hallway across Hall from Rm 956; Wall-mounted	04/27/17 5:56 AM	None Detected
0497-042717-DF-021-B	Flush Sample; Upper Right Oasis Drinking Fountain in Hallway across Hall from Rm 956; Wall-mounted	04/27/17 5:57 AM	None Detected
0497-042717-DF-022-A	Initial Draw Sample; Lower Left Oasis Drinking Fountain in Hallway across Hall from Rm 956; Wall-mounted	04/27/17 5:58 AM	None Detected
0497-042717-DF-022-B	Flush Sample; Lower Left Oasis Drinking Fountain in Hallway across Hall from Rm 956; Wall-mounted	04/27/17 5:59 AM	None Detected
0497-042717-DF-023-A	Initial Draw Sample; Lower Left Elkay Drinking Fountain in Hallway to the Left of Rm 924; Wall-mounted	04/27/17 5:33 AM	None Detected
0497-042717-DF-023-B	Flush Sample; Lower Left Elkay Drinking Fountain in Hallway to the Left of Rm 924; Wall-mounted	04/27/17 5:34 AM	None Detected
0497-042717-DF-024-A	Initial Draw Sample; Upper Right Oasis Drinking Fountain in Hallway to the Left of Rm 924; Wall-mounted	04/27/17 5:35 AM	None Detected
0497-042717-DF-024-B	Flush Sample; Upper Right Oasis Drinking Fountain in Hallway to the Left of Rm 924; Wall-mounted	04/27/17 5:36 AM	None Detected
0497-042717-DF-025-A	Initial Draw Sample; Upper Right Oasis Drinking Fountain in Hallway across from Kitchen 919; Wall-mounted	04/27/17 5:39 AM	None Detected
0497-042717-DF-025-B	Flush Sample; Upper Right Oasis Drinking Fountain in Hallway across from Kitchen 919; Wall-mounted	04/27/17 5:40 AM	None Detected

Table 1. Summary of Lead in Drinking Water Laboratory Analytical Results

Stephenson High School

701 Stephenson Road, Stone Mountain, GA 30087



Sample ID*	Sample Location Description	Sample Date & Time	Lead Test Results (ppb)
0497-042717-DF-026-A	Initial Draw Sample; Lower Left Oasis Drinking Fountain in Hallway across from Kitchen 919; Wall-mounted	04/27/17 5:41 AM	None Detected
0497-042717-DF-026-B	Flush Sample; Lower Left Oasis Drinking Fountain in Hallway across from Kitchen 919; Wall-mounted	04/27/17 5:42 AM	None Detected
0497-042717-RS-001-A	Initial Draw Sample; RR in Boy's Locker Rm	04/27/17 5:32 AM	5.19
0497-042717-RS-001-B	Flush Sample; RR in Boy's Locker Rm	04/27/17 5:33 AM	None Detected
0497-042717-RS-002-A	Initial Draw Sample; Middle Sink in Girl's RR across from Rm 501	04/27/17 5:32 AM	None Detected
0497-042717-RS-002-B	Flush Sample; Middle Sink in Girl's RR across from Rm 501	04/27/17 5:33 AM	None Detected
0497-042717-RS-003-A	Initial Draw Sample; Far Left Sink on Left Wall in Girl's RR near Rm 956	04/27/17 6:01 AM	None Detected
0497-042717-RS-003-B	Flush Sample; Far Left Sink on Left Wall in Girl's RR near Rm 956	04/27/17 6:02 AM	None Detected
0497-042717-RS-004-A	Initial Draw Sample; Far Left Sink in Boy's RR across Hall from Rm 924	04/27/17 5:45 AM	None Detected
0497-042717-RS-004-B	Flush Sample; Far Left Sink in Boy's RR across Hall from Rm 924	04/27/17 5:46 AM	None Detected
0497-042717-TL-001-A	Initial Draw Sample; Sink in Teacher's Lounge Rm 310.1 per Map, Near Side Café Entrance	04/27/17 5:14 AM	6.22
0497-042717-TL-001-B	Flush Sample; Sink in Teacher's Lounge Rm 310.1 per Map, Near Side Café Entrance	04/27/17 5:15 AM	None Detected
0497-042717-TL-002-A	Initial Draw Sample; Only Sink in Rm 105.1 per Map, was a Teacher's Lounge prior but converted to Nurse Station	04/27/17 5:15 AM	None Detected
0497-042717-TL-002-B	Flush Sample; Only Sink in Rm 105.1 per Map, was a Teacher's Lounge prior but converted to Nurse Station	04/27/17 5:16 AM	None Detected
0497-042717-TL-003-A	Initial Draw Sample; Sink in Teacher's Lounge around corner from Rm 320	04/27/17 5:27 AM	None Detected
0497-042717-TL-003-B	Flush Sample; Sink in Teacher's Lounge around corner from Rm 320	04/27/17 5:29 AM	None Detected
0497-042717-IM-002-A	Initial Draw Sample; No Brand Ice Machine in Kitchen	04/27/17 4:59 AM	None Detected
0497-042717-OT-001-A	Initial Draw Sample; Only Sink in Main Office Area Work Room	04/27/17 5:10 AM	None Detected
0497-042717-OT-001-B	Flush Sample; Only Sink in Main Office Area Work Room	04/27/17 5:11 AM	None Detected
0497-042717-AF-001-A	Initial Draw Sample; Spigot/water hose next to Athletic Field Track	04/27/17 5:50 AM	None Detected
0497-042717-AF-001-B	Flush Sample; Spigot/water hose next to Athletic Field Track	04/27/17 5:51 AM	None Detected
0497-042717-CS-001-A	Initial Draw Sample; Labeled Food Prep Sink on Back Wall in Kitchen	04/27/17 4:56 AM	None Detected
0497-042717-CS-001-B	Flush Sample; Labeled Food Prep Sink on Back Wall in Kitchen	04/27/17 4:57 AM	None Detected
0497-042717-CS-002-A	Initial Draw Sample; Sink Closest to Entrance Labeled Sink 2 in Rm 310	04/27/17 5:09 AM	7.86
0497-042717-CS-002-B	Flush Sample; Sink Closest to Entrance Labeled Sink 2 in Rm 310	04/27/17 5:10 AM	4.86
0497-042717-CS-003-A	Initial Draw Sample; Sink at Back Middle on Left Labeled Sink 3 in Rm 310	04/27/17 5:11 AM	2.02

Table 1. Summary of Lead in Drinking Water Laboratory Analytical Results

Stephenson High School
701 Stephenson Road, Stone Mountain, GA 30087



Sample ID*	Sample Location Description	Sample Date & Time	Lead Test Results (ppb)
0497-042717-CS-003-B	Flush Sample; Sink at Back Middle on Left Labeled Sink 3 in Rm 310	04/27/17 5:12 AM	None Detected
0497-042717-CS-004-A	Initial Draw Sample; Sink at Back Middle on Right Labeled Sink 4 in Rm 310	04/27/17 5:13 AM	2.24
0497-042717-CS-004-B	Flush Sample; Sink at Back Middle on Right Labeled Sink 4 in Rm 310	04/27/17 5:14 AM	None Detected
0497-042717-CS-005-A	Initial Draw Sample; Sink at Back Right Labeled Sink 5 in Rm 310	04/27/17 5:15 AM	40.5
0497-042717-CS-005-B	Flush Sample; Sink at Back Right Labeled Sink 5 in Rm 310	04/27/17 5:16 AM	1.38
0497-042717-CS-006-A	Initial Draw Sample; Front Right Sink in Rm 310 Labeled Sink 6	04/27/17 5:17 AM	3.81
0497-042717-CS-006-B	Flush Sample; Front Right Sink in Rm 310 Labeled Sink 6	04/27/17 5:18 AM	None Detected
0497-042717-CS-007-A	Initial Draw Sample; Sink at Front Middle on Right Labeled Sink 7 in Rm 310	04/27/17 5:19 AM	1.31
0497-042717-CS-007-B	Flush Sample; Sink at Front Middle on Right Labeled Sink 7 in Rm 310	04/27/17 5:20 AM	None Detected
0497-042717-CS-008-A	Initial Draw Sample; Sink at Front Middle on Left Labeled Sink 1 in Rm 310	04/27/17 5:21 AM	1.74
0497-042717-CS-008-B	Flush Sample; Sink at Front Middle on Left Labeled Sink 1 in Rm 310	04/27/17 5:22 AM	1.12
0497-042717-SC-001-A	Main Service Connection Entry into the Building	04/27/17 4:50 AM	None Detected

Notes:

ppb-parts per billion

Bold-Exceeds 15 ppb--EPA's Action Level for Lead

* Note--Where "A" and "B" are indicated, AEM collected two samples at each source area location: ("A") initial draw sample; and ("B") after a 30-second flush sample



November 29, 2017

Via E-Mail: Joshua_I_williams@dekalbschoolsga.org

Mr. Joshua L. Williams, MBA, MSM, PMP
Chief Operations Officer
DeKalb County School District
Operations Division
Sam Moss Service Center
1780 Montreal Road
Tucker, Georgia 30084

**Re: Final Technical Lead in Drinking Water Sampling Report
Stephenson High School (Facility ID #0497)
701 Stephenson Road, Stone Mountain, Georgia 30087
AEM Project No. 1561-1601**

Dear Mr. Williams:

Atlanta Environmental Management, Inc. (AEM) is pleased to provide the DeKalb County School District (DCSD) an electronic copy of the Final Technical Lead in Drinking Water Sampling Report for Stephenson High School (Facility ID #0497).

Initial sampling was conducted on April 27, 2017, and analytical results were received from Analytical Environmental Services, Inc., on May 11, 2017. Additional drinking water samples from select source units were collected on October 13, 2017, and analytical results were received from Analytical Environmental Services, Inc., on October 25, 2017.

FINDINGS

Initial Testing

AEM collected 88 drinking water samples from 44 sources at Stephenson High School (Facility ID #0497), including 2 duplicate samples (see Figure 1). A description of the drinking water outlets sampled and a summary of sample analytical results are provided in the attached table.

Samples were collected in accordance with the Water Sampling Methodology Protocol for DeKalb County School District, dated September 12, 2016. A copy of AEM's Field Sampling Notes is provided in Attachment A.

One of the sources sampled had a drinking water sample result that contained lead at a concentration at or above EPA's action level of 15 parts per billion (ppb). This source is indicated in bold and shaded font in the attached table. A copy of the AES laboratory analytical report is provided in Attachment B.

Sample Results of Previously Identified Source Units That Exceeded 15 ppb

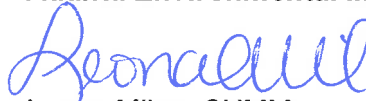
During the initial sampling event on April 27, 2017, one source unit was sampled and the analytical results indicated that one or more of the results were above EPA's action level of 15 ppb. DCSD replaced the source unit and AEM collected two drinking water samples on October 13, 2017.

None of the samples collected contained lead at a concentration exceeding EPA's action level of 15 ppb. A description of the drinking water outlets sampled and a summary of sample analytical results are provided in Table 1.

We appreciate your selection of AEM for this project. If you have any questions, please do not hesitate to contact us.

Sincerely,

Atlanta Environmental Management, Inc.



Leona Miles, CHMM
Senior Project Manager



Janet T. Hart
President

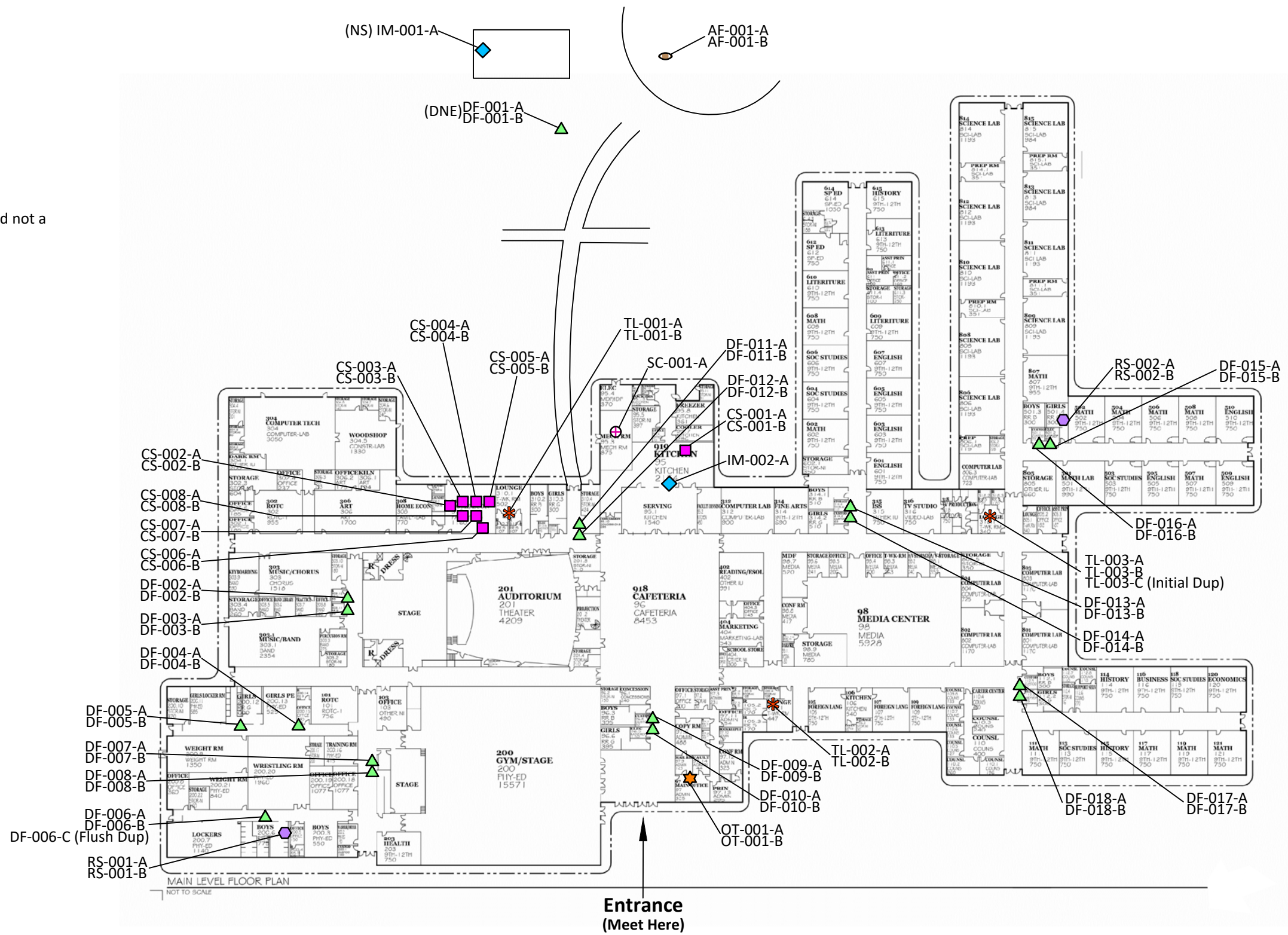
/krf

cc: Daniel Drake (DCSD)
Tracee Hill (DCSD)

FIGURE

Legend

- Athletic Field (AF)
 - Cafeteria Sink (CS)
 - Drinking Fountain (DF)
 - Ice Maker (IM)
 - Kindergarten Sink (KS)
 - Other (OT)
 - Restroom Sink (RS)
 - Service Connection (SC)
 - Teachers Lounge (TL)
- (NS) - Not Sampled; DCSD determined not a drinking water source
 (DNE) - Does Not Exist



 Atlanta Environmental Management, Inc. Environmental Consulting, Engineering, Hydrogeologic Services 2580 Northeast Expressway • Atlanta, Georgia 30345 Phone: 404.329.9006 • Fax: 404.329.2057			
PROJECT #:	1561-1601-0497	DATE:	November 14, 2017
DRAWN BY:	AL	REVISED:	----
CHECKED BY:	TR	SCALE:	NTS
PROJECT MGR:	LM	PRINTED:	11/14/2017 11:12 AM

Client: DeKalb County School District
 Site Location: Stephenson High Facility (0497)
 701 Stephenson Road
 Stone Mountain, GA 30087

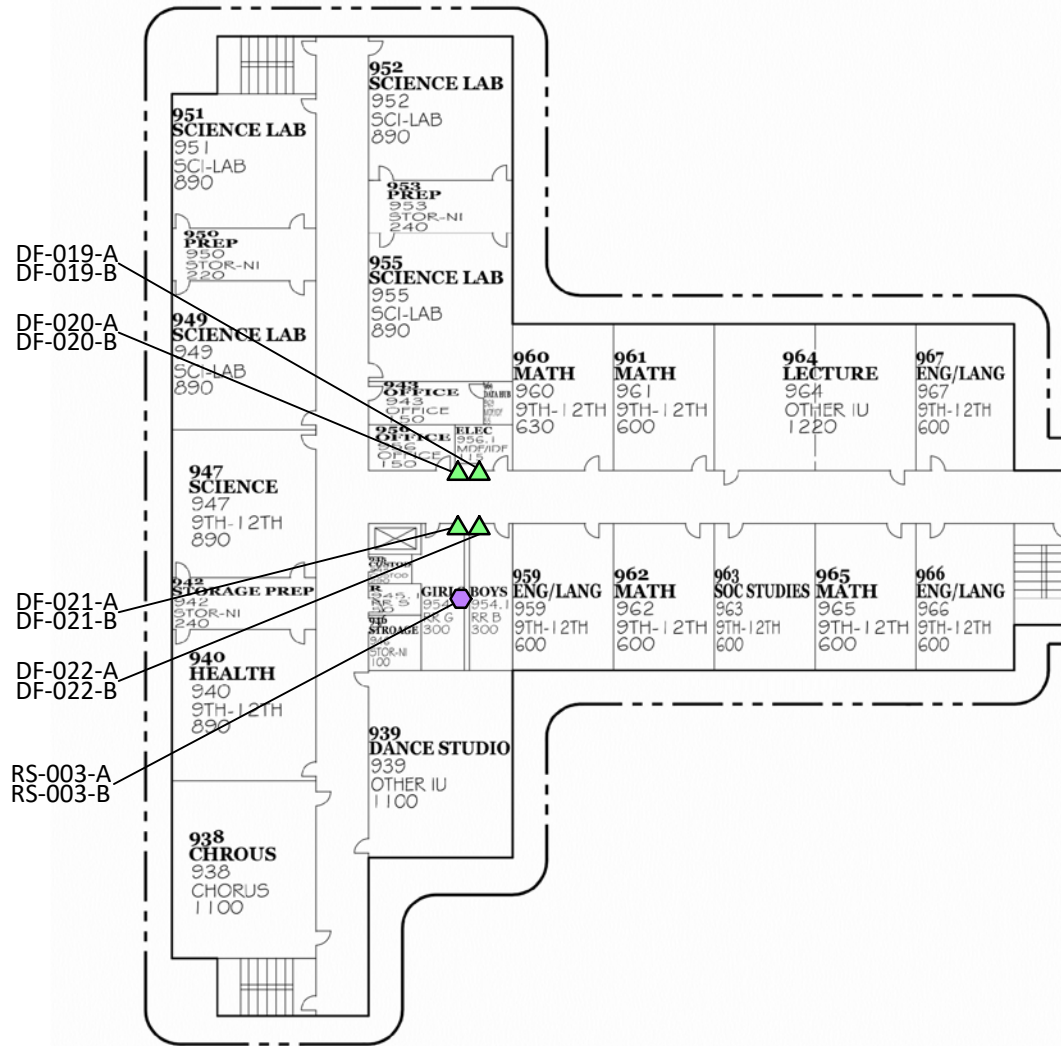
Sample Location Plan

Figure
1a

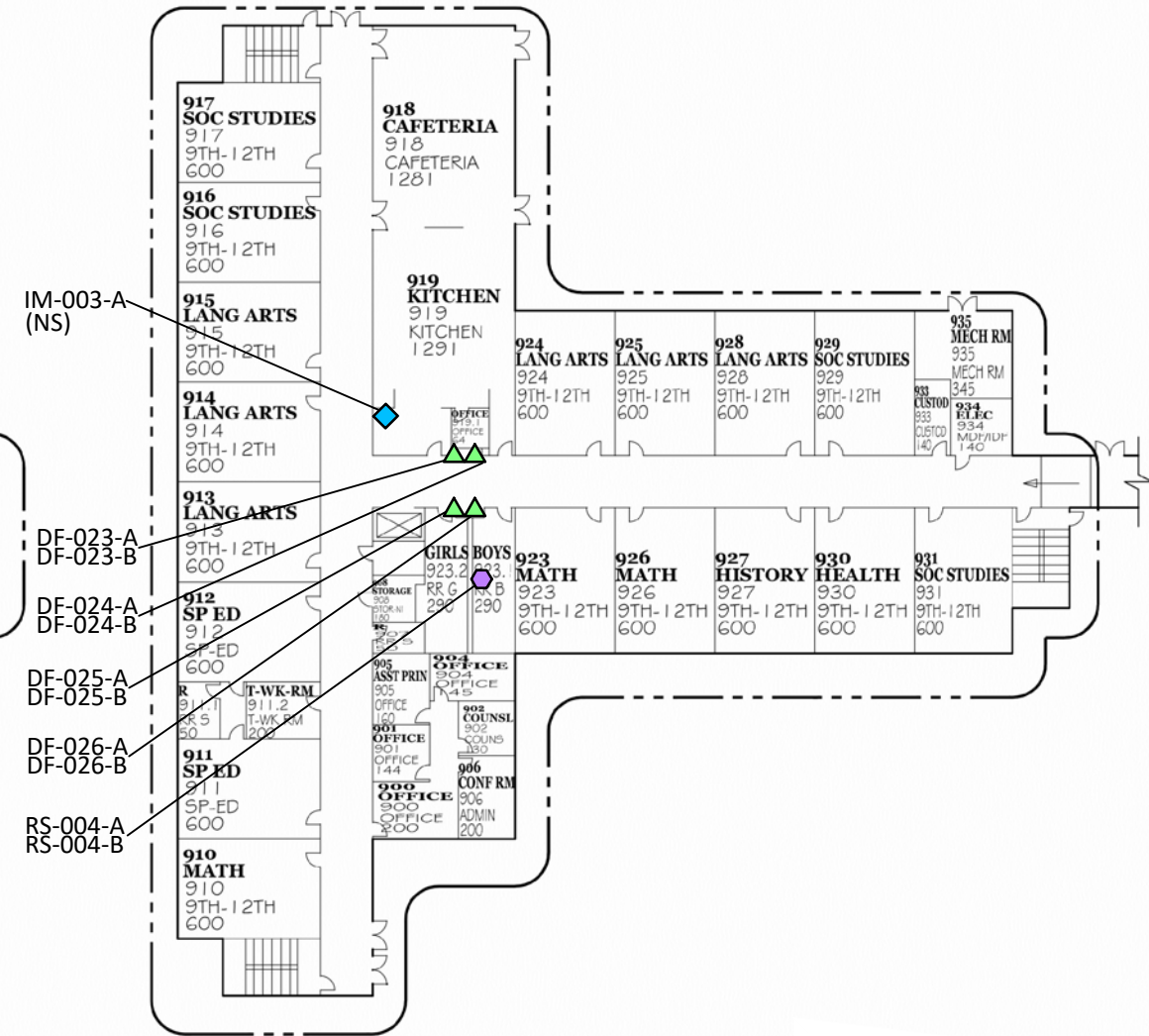
G:\DWG\1561-1601 DeKalb County Schools\0497\0497

Legend

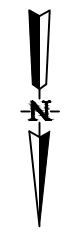
- Athletic Field (AF)
- Cafeteria Sink (CS)
- Drinking Fountain (DF)
- Ice Maker (IM)
- Kindergarten Sink (KS)
- Other (OT)
- Restroom Sink (RS)
- Service Connection (SC)
- Teachers Lounge (TL)
- (NS) - Not Sampled; DCSD determined not a drinking water source



UPPER LEVEL FLOOR PLAN
NOT TO SCALE



MAIN LEVEL FLOOR PLAN
NOT TO SCALE



 Atlanta Environmental Management, Inc. Environmental Consulting, Engineering, Hydrogeologic Services 2580 Northeast Expressway • Atlanta, Georgia 30345 Phone: 404.329.9006 • Fax: 404.329.2057			
PROJECT #:	1561-1601-0497	DATE:	November 14, 2017
DRAWN BY:	AL	REVISED:	----
CHECKED BY:	TR	SCALE:	NTS
PROJECT MGR:	LM	PRINTED:	11/14/2017 11:13 AM

Client: DeKalb County School District
 Site Location: Stephenson High Facility (0497)
 701 Stephenson Road
 Stone Mountain, GA 30087

<p>Sample Location Plan</p>	<p>Figure 1b</p>
-----------------------------	-----------------------------

TABLE

Table 1. Summary of Lead in Drinking Water Laboratory Analytical Results

Stephenson High School
701 Stephenson Road, Stone Mountain, GA 30087



Sample ID*	Sample Location Description	Sample Date & Time	Lead Test Results (ppb)
0497-042717-DF-001-A	Not Sampled; Source Unit Does Not Exist	--	--
0497-042717-DF-001-B	Not Sampled; Source Unit Does Not Exist	--	--
0497-042717-DF-002-A	Initial Draw Sample; Upper Right Oasis Drinking Fountain in Hallway near Band Rm; Wall-mounted	04/27/17 5:23 AM	1.25
0497-042717-DF-002-B	Flush Sample; Upper Right Oasis Drinking Fountain in Hallway near Band Rm; Wall-mounted	04/27/17 5:24 AM	5.14
0497-042717-DF-003-A	Initial Draw Sample; Lower Left Oasis Drinking Fountain in Hallway near Band Rm; Wall-mounted	04/27/17 5:25 AM	1.14
0497-042717-DF-003-B	Flush Sample; Lower Left Oasis Drinking Fountain in Hallway near Band Rm; Wall-mounted	04/27/17 5:26 AM	1.48
0497-042717-DF-004-A	Initial Draw Sample; Right Oasis Drinking Fountain in Hallway near Girl's Locker Rm; Wall-mounted	04/27/17 5:43 AM	None Detected
0497-042717-DF-004-B	Flush Sample; Right Oasis Drinking Fountain in Hallway near Girl's Locker Rm; Wall-mounted	04/27/17 5:44 AM	None Detected
0497-042717-DF-005-A	Initial Draw Sample; Left Oasis Drinking Fountain in Hallway near Girl's Locker Rm; Wall-mounted	04/27/17 5:41 AM	None Detected
0497-042717-DF-005-B	Flush Sample; Left Oasis Drinking Fountain in Hallway near Girl's Locker Rm; Wall-mounted	04/27/17 5:42 AM	1.87
0497-042717-DF-006-A	Initial Draw Sample; Single Elkay Drinking Fountain in Hallway near Boy's Locker Rm; Wall-mounted	04/27/17 5:35 AM	1.23
0497-042717-DF-006-B	Flush Sample; Single Elkay Drinking Fountain in Hallway near Boy's Locker Rm; Wall-mounted	04/27/17 5:36 AM	1.11
0497-042717-DF-006-C	Flush Duplicate Sample; Single Elkay Drinking Fountain in Hallway near Boy's Locker Rm; Wall-mounted	04/27/17 5:37 AM	1.00
0497-042717-DF-007-A	Initial Draw Sample; Lower Left Elkay Drinking Fountain in the Hallway Behind Gym Stage; Wall-mounted	04/27/17 5:50 AM	None Detected
0497-042717-DF-007-B	Flush Sample; Lower Left Elkay Drinking Fountain in the Hallway Behind Gym Stage; Wall-mounted	04/27/17 5:51 AM	None Detected
0497-042717-DF-008-A	Initial Draw Sample; Upper Right Elkay Drinking Fountain in the Hallway Behind Gym Stage; Wall-mounted	04/27/17 5:52 AM	None Detected
0497-042717-DF-008-B	Flush Sample; Upper Right Elkay Drinking Fountain in the Hallway Behind Gym Stage; Wall-mounted	04/27/17 5:53 AM	None Detected

Table 1. Summary of Lead in Drinking Water Laboratory Analytical Results

Stephenson High School
701 Stephenson Road, Stone Mountain, GA 30087



Sample ID*	Sample Location Description	Sample Date & Time	Lead Test Results (ppb)
0497-042717-DF-009-A	Initial Draw Sample; Upper Right Elkay Drinking Fountain in Hallway across Hall from Main Entrance; Wall-mounted	04/27/17 4:56 AM	None Detected
0497-042717-DF-009-B	Flush Sample; Upper Right Elkay Drinking Fountain in Hallway across Hall from Main Entrance; Wall-mounted	04/27/17 4:57 AM	None Detected
0497-042717-DF-010-A	Initial Draw Sample; Lower Left Elkay Drinking Fountain in Hallway across Hall from Main Entrance; Wall-mounted	04/27/17 4:58 AM	None Detected
0497-042717-DF-010-B	Flush Sample; Lower Left Elkay Drinking Fountain in Hallway across Hall from Main Entrance; Wall-mounted	04/27/17 4:59 AM	None Detected
0497-042717-DF-011-A	Initial Draw Sample; Lower Left Oasis Drinking Fountain in Hallway next to Storage Rm 310.4 per Map and Side Café Entrance; Wall-mounted	04/27/17 5:07 AM	None Detected
0497-042717-DF-011-B	Flush Sample; Lower Left Oasis Drinking Fountain in Hallway next to Storage Rm 310.4 per Map and Side Café Entrance; Wall-mounted	04/27/17 5:08 AM	None Detected
0497-042717-DF-012-A	Initial Draw Sample; Upper Right Elkay Drinking Fountain in Hallway next to Storage Rm 310.4 per Map and Side Café Entrance; Wall-mounted	04/27/17 5:09 AM	None Detected
0497-042717-DF-012-B	Flush Sample; Upper Right Elkay Drinking Fountain in Hallway next to Storage Rm 310.4 per Map and Side Café Entrance; Wall-mounted	04/27/17 5:10 AM	None Detected
0497-042717-DF-013-A	Initial Draw Sample; Upper Right Oasis Drinking Fountain in Hallway Between RR's at Media Center Entrance; Wall-mounted	04/27/17 5:20 AM	None Detected
0497-042717-DF-013-B	Flush Sample; Upper Right Oasis Drinking Fountain in Hallway Between RR's at Media Center Entrance; Wall-mounted	04/27/17 5:21 AM	None Detected
0497-042717-DF-014-A	Initial Draw Sample; Lower Left Oasis Drinking Fountain in Hallway Between RR's at Media Center Entrance; Wall-mounted	04/27/17 5:22 AM	None Detected
0497-042717-DF-014-B	Flush Sample; Lower Left Oasis Drinking Fountain in Hallway Between RR's at Media Center Entrance; Wall-mounted	04/27/17 5:23 AM	None Detected
0497-042717-DF-015-A	Initial Draw Sample; Upper Right Oasis Drinking Fountain in Hallway across from Rm 501; Wall-mounted	04/27/17 5:37 AM	None Detected
0497-042717-DF-015-B	Flush Sample; Upper Right Oasis Drinking Fountain in Hallway across from Rm 501; Wall-mounted	04/27/17 5:38 AM	None Detected
0497-042717-DF-016-A	Initial Draw Sample; Lower Left Elkay Drinking Fountain in Hallway across from Rm 501; Wall-mounted	04/27/17 5:35 AM	None Detected
0497-042717-DF-016-B	Flush Sample; Lower Left Elkay Drinking Fountain in Hallway across from Rm 501; Wall-mounted	04/27/17 5:36 AM	None Detected

Table 1. Summary of Lead in Drinking Water Laboratory Analytical Results

Stephenson High School
701 Stephenson Road, Stone Mountain, GA 30087



Sample ID*	Sample Location Description	Sample Date & Time	Lead Test Results (ppb)
0497-042717-DF-017-A	Initial Draw Sample; Lower Left Oasis Drinking Fountain in Hallway to Right of Rm 108; Wall-mounted	04/27/17 5:20 AM	None Detected
0497-042717-DF-017-B	Flush Sample; Lower Left Oasis Drinking Fountain in Hallway to Right of Rm 108; Wall-mounted	04/27/17 5:21 AM	None Detected
0497-042717-DF-018-A	Initial Draw Sample; Upper Right Oasis Drinking Fountain in Hallway to Right of Rm 108; Wall-mounted	04/27/17 5:22 AM	None Detected
0497-042717-DF-018-B	Flush Sample; Upper Right Oasis Drinking Fountain in Hallway to Right of Rm 108; Wall-mounted	04/27/17 5:23 AM	None Detected
0497-042717-DF-019-A	Initial Draw Sample; Upper Right Oasis Drinking Fountain in Hallway to Right of Rm 956; Wall-mounted	04/27/17 5:51 AM	None Detected
0497-042717-DF-019-B	Flush Sample; Upper Right Oasis Drinking Fountain in Hallway to Right of Rm 956; Wall-mounted	04/27/17 5:52 AM	None Detected
0497-042717-DF-020-A	Initial Draw Sample; Lower Left Oasis Drinking Fountain in Hallway to Right of Rm 956; Wall-mounted	04/27/17 5:53 AM	None Detected
0497-042717-DF-020-B	Flush Sample; Lower Left Oasis Drinking Fountain in Hallway to Right of Rm 956; Wall-mounted	04/27/17 5:54 AM	None Detected
0497-042717-DF-021-A	Initial Draw Sample; Upper Right Oasis Drinking Fountain in Hallway across Hall from Rm 956; Wall-mounted	04/27/17 5:56 AM	None Detected
0497-042717-DF-021-B	Flush Sample; Upper Right Oasis Drinking Fountain in Hallway across Hall from Rm 956; Wall-mounted	04/27/17 5:57 AM	None Detected
0497-042717-DF-022-A	Initial Draw Sample; Lower Left Oasis Drinking Fountain in Hallway across Hall from Rm 956; Wall-mounted	04/27/17 5:58 AM	None Detected
0497-042717-DF-022-B	Flush Sample; Lower Left Oasis Drinking Fountain in Hallway across Hall from Rm 956; Wall-mounted	04/27/17 5:59 AM	None Detected
0497-042717-DF-023-A	Initial Draw Sample; Lower Left Elkay Drinking Fountain in Hallway to the Left of Rm 924; Wall-mounted	04/27/17 5:33 AM	None Detected
0497-042717-DF-023-B	Flush Sample; Lower Left Elkay Drinking Fountain in Hallway to the Left of Rm 924; Wall-mounted	04/27/17 5:34 AM	None Detected
0497-042717-DF-024-A	Initial Draw Sample; Upper Right Oasis Drinking Fountain in Hallway to the Left of Rm 924; Wall-mounted	04/27/17 5:35 AM	None Detected
0497-042717-DF-024-B	Flush Sample; Upper Right Oasis Drinking Fountain in Hallway to the Left of Rm 924; Wall-mounted	04/27/17 5:36 AM	None Detected
0497-042717-DF-025-A	Initial Draw Sample; Upper Right Oasis Drinking Fountain in Hallway across from Kitchen 919; Wall-mounted	04/27/17 5:39 AM	None Detected

Table 1. Summary of Lead in Drinking Water Laboratory Analytical Results

Stephenson High School
701 Stephenson Road, Stone Mountain, GA 30087



Sample ID*	Sample Location Description	Sample Date & Time	Lead Test Results (ppb)
0497-042717-DF-025-B	Flush Sample; Upper Right Oasis Drinking Fountain in Hallway across from Kitchen 919; Wall-mounted	04/27/17 5:40 AM	None Detected
0497-042717-DF-026-A	Initial Draw Sample; Lower Left Oasis Drinking Fountain in Hallway across from Kitchen 919; Wall-mounted	04/27/17 5:41 AM	None Detected
0497-042717-DF-026-B	Flush Sample; Lower Left Oasis Drinking Fountain in Hallway across from Kitchen 919; Wall-mounted	04/27/17 5:42 AM	None Detected
0497-042717-RS-001-A	Initial Draw Sample; RR in Boy's Locker Rm	04/27/17 5:32 AM	5.19
0497-042717-RS-001-B	Flush Sample; RR in Boy's Locker Rm	04/27/17 5:33 AM	None Detected
0497-042717-RS-002-A	Initial Draw Sample; Middle Sink in Girl's RR across from Rm 501	04/27/17 5:32 AM	None Detected
0497-042717-RS-002-B	Flush Sample; Middle Sink in Girl's RR across from Rm 501	04/27/17 5:33 AM	None Detected
0497-042717-RS-003-A	Initial Draw Sample; Far Left Sink on Left Wall in Girl's RR near Rm 956	04/27/17 6:01 AM	None Detected
0497-042717-RS-003-B	Flush Sample; Far Left Sink on Left Wall in Girl's RR near Rm 956	04/27/17 6:02 AM	None Detected
0497-042717-RS-004-A	Initial Draw Sample; Far Left Sink in Boy's RR across Hall from Rm 924	04/27/17 5:45 AM	None Detected
0497-042717-RS-004-B	Flush Sample; Far Left Sink in Boy's RR across Hall from Rm 924	04/27/17 5:46 AM	None Detected
0497-042717-TL-001-A	Initial Draw Sample; Sink in Teacher's Lounge Rm 310.1 per Map, Near Side Café Entrance	04/27/17 5:14 AM	6.22
0497-042717-TL-001-B	Flush Sample; Sink in Teacher's Lounge Rm 310.1 per Map, Near Side Café Entrance	04/27/17 5:15 AM	None Detected
0497-042717-TL-002-A	Initial Draw Sample; Only Sink in Rm 105.1 per Map, was a Teacher's Lounge prior but converted to Nurse Station	04/27/17 5:15 AM	None Detected
0497-042717-TL-002-B	Flush Sample; Only Sink in Rm 105.1 per Map, was a Teacher's Lounge prior but converted to Nurse Station	04/27/17 5:16 AM	None Detected
0497-042717-TL-003-A	Initial Draw Sample; Sink in Teacher's Lounge around corner from Rm 320	04/27/17 5:27 AM	None Detected
0497-042717-TL-003-B	Flush Sample; Sink in Teacher's Lounge around corner from Rm 320	04/27/17 5:29 AM	None Detected
0497-042717-TL-003-C	Initial Duplicate Sample; Sink in Teacher's Lounge around corner from Rm 320	04/27/17 5:28 AM	None Detected
0497-042717-IM-001-A	Not Sampled; Inoperable Ice Machine in Concession Stand; DCSD determined ice machine was not a drinking water source	NS	NS
0497-042717-IM-002-A	Initial Draw Sample; No Brand Ice Machine in Kitchen	04/27/17 4:59 AM	None Detected
0497-042717-IM-003-A	Not Sampled; Inoperable Scotsman Ice Machine in Rm 919; DCSD determined ice machine was not a drinking water source	NS	NS
0497-042717-OT-001-A	Initial Draw Sample; Only Sink in Main Office Area Work Room	04/27/17 5:10 AM	None Detected
0497-042717-OT-001-B	Flush Sample; Only Sink in Main Office Area Work Room	04/27/17 5:11 AM	None Detected
0497-042717-AF-001-A	Initial Draw Sample; Spigot/water hose next to Athletic Field Track	04/27/17 5:50 AM	None Detected
0497-042717-AF-001-B	Flush Sample; Spigot/water hose next to Athletic Field Track	04/27/17 5:51 AM	None Detected
0497-042717-CS-001-A	Initial Draw Sample; Labeled Food Prep Sink on Back Wall in Kitchen	04/27/17 4:56 AM	None Detected

Table 1. Summary of Lead in Drinking Water Laboratory Analytical Results

Stephenson High School
701 Stephenson Road, Stone Mountain, GA 30087



Sample ID*	Sample Location Description	Sample Date & Time	Lead Test Results (ppb)
0497-042717-CS-001-B	Flush Sample; Labeled Food Prep Sink on Back Wall in Kitchen	04/27/17 4:57 AM	None Detected
0497-042717-CS-002-A	Initial Draw Sample; Sink Closest to Entrance Labeled Sink 2 in Rm 310	04/27/17 5:09 AM	7.86
0497-042717-CS-002-B	Flush Sample; Sink Closest to Entrance Labeled Sink 2 in Rm 310	04/27/17 5:10 AM	4.86
0497-042717-CS-003-A	Initial Draw Sample; Sink at Back Middle on Left Labeled Sink 3 in Rm 310	04/27/17 5:11 AM	2.02
0497-042717-CS-003-B	Flush Sample; Sink at Back Middle on Left Labeled Sink 3 in Rm 310	04/27/17 5:12 AM	None Detected
0497-042717-CS-004-A	Initial Draw Sample; Sink at Back Middle on Right Labeled Sink 4 in Rm 310	04/27/17 5:13 AM	2.24
0497-042717-CS-004-B	Flush Sample; Sink at Back Middle on Right Labeled Sink 4 in Rm 310	04/27/17 5:14 AM	None Detected
0497-042717-CS-005-A	Initial Draw Sample; Sink at Back Right Labeled Sink 5 in Rm 310	04/27/17 5:15 AM	40.5
0497-042717-CS-005-B	Flush Sample; Sink at Back Right Labeled Sink 5 in Rm 310	04/27/17 5:16 AM	1.38
0497-101317-CS-005-A	Initial Draw Sample; Retest Sink at Back Right Labeled Sink 5 in Rm 310	10/13/17 5:27 AM	12.1
0497-101317-CS-005-B	Flush Sample; Retest Sink at Back Right Labeled Sink 5 in Rm 310	10/13/17 5:28 AM	1.33
0497-042717-CS-006-A	Initial Draw Sample; Front Right Sink in Rm 310 Labeled Sink 6	04/27/17 5:17 AM	3.81
0497-042717-CS-006-B	Flush Sample; Front Right Sink in Rm 310 Labeled Sink 6	04/27/17 5:18 AM	None Detected
0497-042717-CS-007-A	Initial Draw Sample; Sink at Front Middle on Right Labeled Sink 7 in Rm 310	04/27/17 5:19 AM	1.31
0497-042717-CS-007-B	Flush Sample; Sink at Front Middle on Right Labeled Sink 7 in Rm 310	04/27/17 5:20 AM	None Detected
0497-042717-CS-008-A	Initial Draw Sample; Sink at Front Middle on Left Labeled Sink 1 in Rm 310	04/27/17 5:21 AM	1.74
0497-042717-CS-008-B	Flush Sample; Sink at Front Middle on Left Labeled Sink 1 in Rm 310	04/27/17 5:22 AM	1.12
0497-042717-SC-001-A	Main Service Connection Entry into the Building	04/27/17 4:50 AM	None Detected

Notes:

ppb-parts per billion

Bold-Exceeds 15 ppb--EPA's Action Level for Lead

* Note--Where "A" and "B" are indicated, AEM collected two samples at each source area location: ("A") initial draw sample; and ("B") after a 30-second flush sample

(--): Source Sample Locations were previously identified by DCSD; however upon arrival to collect samples, source was not located

NS-Not sampled; source unit was inoperable during the initial testing

ATTACHMENT A
AEM Field Sampling Forms

**DEKALB COUNTY SCHOOL DISTRICT
LEAD IN DRINKING WATER FIELD DATA SHEET**

FACILITY NAME: STEPHENSON HIGH FACILITY
 ADDRESS: 701 Stephenson Road Stone Mtn, GA, 30087

FACILITY ID: 0497

DATE	TIME	SAMPLE ID (Facility ID-Date-Location Type-Sequential #-Sample Type)	NEAREST ROOM	LOCATION (circle)	DESCRIPTION	SAMPLER INIT.
4/27/17	✓ 0535	0497 - 042717 - DF-016-A	across from 501	In room Hallway	lower left Elkay urn	LH
4/27/17	✓ 0536	0497 - 042717 - DF-016-B		In room Hallway	" "	LH
4/27/17	✓ 0537	0497 - 042717 - DF-015-A		In room Hallway	upper Right Oasis urn	LH
4/27/17	✓ 0538	0497 - 042717 - DF-015-B		In room Hallway	" "	LH
4/27/17	✓ 0550	0497 - 042717 - AF-001-A	on track	In room Hallway	ripped water hose at track	LH
4/27/17	✓ 0551	0497 - 042717 - AF-001-B		In room Hallway	" "	LH
4/27/17	/	0497 - 042717 - IM-001-A		In room Hallway	inoperable in concession	LH
4/27/17	/	0497 - 042717 - DF-001-A		In room Hallway	Did not exist	LH
4/27/17	/	0497 - 042717 - DF-001-B		In room Hallway	" "	LH
4/27/17		0497 - 042717 -		In room Hallway		

LOCATION TYPE: AF = athletic field; CS = cafeteria sink; DF = drinking fountain; IM = ice maker; KS = kindergarten sink; RS = restroom sink; SC = service connection; TL = teachers' lounge. SAMPLE TYPE: A = initial draw; B = flush; C = duplicate

**DEKALB COUNTY SCHOOL DISTRICT
LEAD IN DRINKING WATER FIELD DATA SHEET**

FACILITY NAME: STEPHENSON HIGH FACILITY
ADDRESS: 701 Stephenson Road Stone Mtn, GA, 30087

FACILITY ID: 0497

DATE	TIME	SAMPLE ID (Facility ID-Date-Location Type-Sequential #-Sample Type)	NEAREST ROOM	LOCATION (circle)	DESCRIPTION	SAMPLER INIT.
4/27/17	✓ 0450	0497 - 042717 - SC-001-A	in mech. Rm next to kitchen	In room Hallway	spigot in mech. Rm	LA
4/27/17	✓ 0456	0497 - 042717 - CS-001-A	kitchen ↓	In room Hallway	labeled food prep on back wall	44
4/27/17	✓ 0457	0497 - 042717 - CS-001-B		In room Hallway	"	44
4/27/17	✓ 0459	0497 - 042717 - IM-002-A		In room Hallway	no brand IM in kitchen	44
4/27/17	✓ 0507	0497 - 042717 - DF-011-A		next to storage 310.4 and side cafe entrance	In room Hallway	lower left Oasis w/m
4/27/17	✓ 0508	0497 - 042717 - DF-011-B	↓	In room Hallway	"	44
4/27/17	✓ 0509	0497 - 042717 - DF-012-A		In room Hallway	upper right Elkey w/m	44
4/27/17	✓ 0510	0497 - 042717 - DF-012-B		In room Hallway	"	44
4/27/17	✓ 0514	0497 - 042717 - TL-001-A		TL Rm 310-1 near side cafe entrance + electrical closet	In room Hallway	Sink in TL
4/27/17	✓ 0515	0497 - 042717 - TL-001-B		In room Hallway	"	44

LOCATION TYPE: AF = athletic field; CS = cafeteria sink; DF = drinking fountain; IM = ice maker; KS = kindergarten sink; RS = restroom sink; SC = service connection; TL = teachers' lounge. SAMPLE TYPE: A = initial draw; B = flush; C = duplicate

**DEKALB COUNTY SCHOOL DISTRICT
LEAD IN DRINKING WATER FIELD DATA SHEET**

FACILITY NAME: STEPHENSON HIGH FACILITY
 ADDRESS: 701 Stephenson Road Stone Mtn, GA, 30087

FACILITY ID: 0497

DATE	TIME	SAMPLE ID (Facility ID-Date-Location Type-Sequential #-Sample Type)	NEAREST ROOM	LOCATION (circle)	DESCRIPTION	SAMPLER INIT.
4/27/17	✓ 0520	0497 - 042717 - DF-013-A	Between RR's at media center entrance	In room Hallway ⊙	upper right oasis w/m	LH
4/27/17	✓ 0521	0497 - 042717 - DF-013-B	↓	In room Hallway ⊙	" "	LH
4/27/17	✓ 0522	0497 - 042717 - DF-014-A	↓	In room Hallway ⊙	lower left oasis w/m	LA
4/27/17	✓ 0523	0497 - 042717 - DF-014-B	↓	In room Hallway ⊙	" "	LH
4/27/17	✓ 0527	0497 - 042717 - TL-003-A	around corner from Rm 320	In room Hallway ⊙	sink in TL	LH
4/27/17	✓ 0529	0497 - 042717 - TL-003-B		In room Hallway ⊙	" "	LH
4/27/17	✓ 0528	0497 - 042717 - TL-003-C		In room Hallway ⊙	" initial dup	LH
4/27/17	✓ 0532	0497 - 042717 - RS-002-A	Girl's RR across from 501	In room Hallway ⊙	middle sink	LH
4/27/17	✓ 0533	0497 - 042717 - RS-002-B		In room Hallway ⊙	" "	LH
4/27/17		0497 - 042717 -		In room Hallway		

LOCATION TYPE: AF = athletic field; CS = cafeteria sink; DF = drinking fountain; IM = ice maker; KS = kindergarten sink; RS = restroom sink; SC = service connection; TL = teachers' lounge. SAMPLE TYPE: A = initial draw; B = flush; C = duplicate

**DEKALB COUNTY SCHOOL DISTRICT
LEAD IN DRINKING WATER FIELD DATA SHEET**

FACILITY NAME: STEPHENSON HIGH FACILITY
ADDRESS: 701 Stephenson Road Stone Mtn, GA, 30087

FACILITY ID: 0497

DATE	TIME	SAMPLE ID (Facility ID-Date-Location Type-Sequential #-Sample Type)	NEAREST ROOM	LOCATION (circle)	DESCRIPTION	SAMPLER INIT.
4/27/17	✓ 0456	0497 - 042717 - DF-009-A	across hall from main entrance	In room <u>Hallway</u>	Upper right Eikay DF-WM	KTW
4/27/17	✓ 0457	0497 - 042717 - DF-009-B	↓	In room <u>Hallway</u>	SAA	KTW
4/27/17	✓ 0458	0497 - 042717 - DF-010-A		In room <u>Hallway</u>	Lower left Eikay DF-WM	KTW
4/27/17	✓ 0459	0497 - 042717 - DF-010-B		In room <u>Hallway</u>	SAA	KTW
4/27/17	✓ 0510	0497 - 042717 - OT-001-A		work rm in main office area	<u>In room</u> Hallway	Only sink in room
4/27/17	✓ 0511	0497 - 042717 - OT-001-B	" "	<u>In room</u> Hallway	SAA	KTW
4/27/17	✓ 0515	0497 - 042717 - TL-002-A	105.1 per figure	<u>In room</u> Hallway	only sink in room- used to be a TL- converted to nurses station 1 month ago	KTW
4/27/17	✓ 0514	0497 - 042717 - TL-002-B	no Rm #	<u>In room</u> Hallway	SAA	KTW
4/27/17	✓ 0545	0497 - 042717 - RS-004-A	Boys RR across hall from 924	In room Hallway	Far left sink	KTW
4/27/17	✓ 0546	0497 - 042717 - RS-004-B	" "	In room Hallway	SAA	KTW

LOCATION TYPE: AF = athletic field; CS = cafeteria sink; DF = drinking fountain; IM = ice maker; KS = kindergarten sink; RS = restroom sink; SC = service connection; TL = teachers' lounge. SAMPLE TYPE: A = initial draw; B = flush; C = duplicate

**DEKALB COUNTY SCHOOL DISTRICT
LEAD IN DRINKING WATER FIELD DATA SHEET**

FACILITY NAME: STEPHENSON HIGH FACILITY
 ADDRESS: 701 Stephenson Road Stone Mtn, GA, 30087

FACILITY ID: 0497

DATE	TIME	SAMPLE ID (Facility ID-Date-Location Type-Sequential #-Sample Type)	NEAREST ROOM	LOCATION (circle)	DESCRIPTION	SAMPLER INIT.
4/27/17	✓ 0551	0497 - 042717 - DF-019-A	to right of rm 956	In room <u>Hallway</u>	Upper right Oasis DF wm	KTW
4/27/17	✓ 0552	0497 - 042717 - DF-019-B	↓	In room <u>Hallway</u>	SAA	KTW
4/27/17	✓ 0553	0497 - 042717 - DF-020-A	↓	In room <u>Hallway</u>	Lower left Oasis DF wm	KTW
4/27/17	✓ 0554	0497 - 042717 - DF-020-B	↓	In room <u>Hallway</u>	SAA	KTW
4/27/17	✓ 0556	0497 - 042717 - DF-021-A	across hall from rm 956	In room <u>Hallway</u>	Upper right Oasis DF- WM	KTW
4/27/17	✓ 0557	0497 - 042717 - DF-021-B	↓	In room <u>Hallway</u>	SAA	KTW
4/27/17	✓ 0558	0497 - 042717 - DF-022-A	↓	In room <u>Hallway</u>	Lower right Oasis DF- wm	KTW
4/27/17	✓ 0559	0497 - 042717 - DF-022-B	↓	In room <u>Hallway</u>	SAA	KTW
4/27/17	✓ 0601	0497 - 042717 - RS-003-A	girls RR	In room <u>Hallway</u>	Far left sink on left wall	KTW
4/27/17	✓ 0602	0497 - 042717 - RS-003-B		In room <u>Hallway</u>	SAA	KTW

LOCATION TYPE: AF = athletic field; CS = cafeteria sink; DF = drinking fountain; IM = ice maker; KS = kindergarten sink; RS = restroom sink; SC = service connection; TL = teachers' lounge. SAMPLE TYPE: A = initial draw; B = flush; C = duplicate

**DEKALB COUNTY SCHOOL DISTRICT
LEAD IN DRINKING WATER FIELD DATA SHEET**

FACILITY NAME: STEPHENSON HIGH FACILITY
 ADDRESS: 701 Stephenson Road Stone Mtn, GA, 30087

FACILITY ID: 0497

DATE	TIME	SAMPLE ID (Facility ID-Date-Location Type-Sequential #-Sample Type)	NEAREST ROOM	LOCATION (circle)	DESCRIPTION	SAMPLER INIT.
4/27/17	✓ 0520	0497 - 042717 - DF-017-A	to right of rm 108	In room <u>Hallway</u>	Lower left Oasis DF - mm	KTW
4/27/17	✓ 0521	0497 - 042717 - DF-017-B	↓	In room <u>Hallway</u>	SAA	KTW
4/27/17	✓ 0522	0497 - 042717 - DF-018-A		In room <u>Hallway</u>	Upper right Oasis DF - mm	KTW
4/27/17	✓ 0523	0497 - 042717 - DF-018-B		In room <u>Hallway</u>	SAA	KTW
4/27/17	✓	0497 - 042717 - IM-003-A		Rm 919	In room Hallway	Scotsman IM inoperable
4/27/17	✓ 0533	0497 - 042717 - DF-023-A	to left of rm 924	In room <u>Hallway</u>	Lower left Elkay DF mm	KTW
4/27/17	✓ 0534	0497 - 042717 - DF-023-B	↓	In room <u>Hallway</u>	SAA	KTW
4/27/17	✓ 0535	0497 - 042717 - DF-024-A		In room <u>Hallway</u>	Upper right Oasis DF - mm	KTW
4/27/17	✓ 0536	0497 - 042717 - DF-024-B		In room <u>Hallway</u>	SAA	KTW
4/27/17		0497 - 042717 -		in room Hallway		

LOCATION TYPE: AF = athletic field; CS = cafeteria sink; DF = drinking fountain; IM = ice maker; KS = kindergarten sink; RS = restroom sink; SC = service connection; TL = teachers' lounge. SAMPLE TYPE: A = initial draw; B = flush; C = duplicate

**DEKALB COUNTY SCHOOL DISTRICT
LEAD IN DRINKING WATER FIELD DATA SHEET**

FACILITY NAME: STEPHENSON HIGH FACILITY
 ADDRESS: 701 Stephenson Road Stone Mtn, GA, 30087

FACILITY ID: 0497

DATE	TIME	SAMPLE ID (Facility ID-Date-Location Type-Sequential #-Sample Type)	NEAREST ROOM	LOCATION (circle)	DESCRIPTION	SAMPLER INIT.
4/27/17	✓ 0539	0497 - 042717 - DF-025-A	across hall from kitchen 919	In room Hallway	Upper right Oasis DF nm	KTW
4/27/17	✓ 0540	0497 - 042717 - DF-025-B	↓	In room Hallway	SAA	KTW
4/27/17	✓ 0541	0497 - 042717 - DF-026-A		In room Hallway	Lower left Oasis DF nm	KTW
4/27/17	✓ 0542	0497 - 042717 - DF-026-B		In room Hallway	SAA	KTW
4/27/17		0497 - 042717 -		In room Hallway		
4/27/17		0497 - 042717 -		In room Hallway		
4/27/17		0497 - 042717 -		In room Hallway		
4/27/17		0497 - 042717 -		In room Hallway		
4/27/17		0497 - 042717 -		In room Hallway		
4/27/17		0497 - 042717 -		In room Hallway		

LOCATION TYPE: AF = athletic field; CS = cafeteria sink; DF = drinking fountain; IM = ice maker; KS = kindergarten sink; RS = restroom sink; SC = service connection; TL = teachers' lounge. SAMPLE TYPE: A = initial draw; B = flush; C = duplicate

**DEKALB COUNTY SCHOOL DISTRICT
LEAD IN DRINKING WATER FIELD DATA SHEET**

FACILITY NAME: STEPHENSON HIGH FACILITY
 ADDRESS: 701 Stephenson Road Stone Mtn, GA, 30087

FACILITY ID: 0497

DATE	TIME	SAMPLE ID (Facility ID-Date-Location Type-Sequential #-Sample Type)	NEAREST ROOM	LOCATION (circle)	DESCRIPTION	SAMPLER INIT.
4/27/17 ✓	0535	0497 - 042717 - DF-006-A	Boys' Locker Rm	In room Hallway	single WM Elkay	CS
4/27/17 ✓	0536	0497 - 042717 - DF-006+B	"	In room Hallway	"	
4/27/17 ✓	0537	0497 - 042717 - DF-006-C	"	In room Hallway	Flush dup	
4/27/17 ✓	0541	0497 - 042717 - DF-005-A	Girls' Locker Rm	In room Hallway	Left Oasis WM	
4/27/17 ✓	0542	0497 - 042717 - DF-005-B	"	In room Hallway		
4/27/17 ✓	0543	0497 - 042717 - DF-004-A	"	In room Hallway	Right Oasis; WM	
4/27/17 ✓	0544	0497 - 042717 - DF-004-B	"	In room Hallway		
4/27/17		0497 - 042717 -		In room Hallway		
4/27/17		0497 - 042717 -		In room Hallway		
4/27/17		0497 - 042717 -		In room Hallway		

LOCATION TYPE: AF = athletic field; CS = cafeteria sink; DF = drinking fountain; IM = ice maker; KS = kindergarten sink; RS = restroom sink; SC = service connection; TL = teachers' lounge. SAMPLE TYPE: A = initial draw; B = flush; C = duplicate

**DEKALB COUNTY SCHOOL DISTRICT
LEAD IN DRINKING WATER FIELD DATA SHEET**

FACILITY NAME: STEPHENSON HIGH FACILITY
 ADDRESS: 701 Stephenson Road Stone Mtn, GA, 30087

FACILITY ID: 0497

DATE	TIME	SAMPLE ID (Facility ID-Date-Location Type-Sequential #-Sample Type)	NEAREST ROOM	LOCATION (circle)	DESCRIPTION	SAMPLER INIT.
4/27/17 ✓	0509	0497 - 042717 - CS-002-A	310	<u>In room</u> Hallway	sink nearest entrance on right labeled → sink "2"	CS
4/27/17 ✓	0510	0497 - 042717 - CS-002-B	↓	In room Hallway		↓
4/27/17 ✓	0511	0497 - 042717 - CS-003-A		<u>In room</u> Hallway	sink at back middle on left labeled sink "3"	
4/27/17 ✓	0512	0497 - 042717 - CS-003-B		<u>In room</u> Hallway		
4/27/17 ✓	0513	0497 - 042717 - CS-004-A		<u>In room</u> Hallway	sink at back middle on right labeled sink "4"	
4/27/17 ✓	0514	0497 - 042717 - CS-004-B		<u>In room</u> Hallway		
4/27/17 ✓	0515	0497 - 042717 - CS-005-A		<u>In room</u> Hallway	sink at back right of room labeled sink "5"	
4/27/17 ✓	0516	0497 - 042717 - CS-005-B		<u>In room</u> Hallway		
4/27/17 ✓	0517	0497 - 042717 - CS-006-A		<u>In room</u> Hallway	sink front right of room labeled sink "6"	
4/27/17 ✓	0518	0497 - 042717 - CS-006-B		<u>In room</u> Hallway		

LOCATION TYPE: AF = athletic field; CS = cafeteria sink; DF = drinking fountain; IM = ice maker; KS = kindergarten sink; RS = restroom sink; SC = service connection; TL = teachers' lounge. SAMPLE TYPE: A = initial draw; B = flush; C = duplicate

**DEKALB COUNTY SCHOOL DISTRICT
LEAD IN DRINKING WATER FIELD DATA SHEET**

FACILITY NAME: STEPHENSON HIGH FACILITY
 ADDRESS: 701 Stephenson Road Stone Mtn, GA, 30087

FACILITY ID: 0497

DATE	TIME	SAMPLE ID (Facility ID-Date-Location Type-Sequential #-Sample Type)	NEAREST ROOM	LOCATION (circle)	DESCRIPTION	SAMPLER INIT.
4/27/17 ✓	0519	0497 - 042717 - CS-007-A	310	In room Hallway	sink at front middle on right labeled sink "7"	OS
4/27/17 ✓	0520	0497 - 042717 - CS-007-B	310	In room Hallway		↓
4/27/17 ✓	0521	0497 - 042717 - CS-008-A	310	In room Hallway	Sink at front middle on left "Sink 1"	
4/27/17 ✓	0522	0497 - 042717 - CS-008-B	310	In room Hallway		
✓ 4/27/17	0523	0497 - 042717 - DF-002-A	near Band room	In room Hallway	upper right Oasis WM	
✓ 4/27/17	0524	0497 - 042717 - DF-002-B		In room Hallway		
✓ 4/27/17	0525	0497 - 042717 - DF-003-A		In room Hallway	Lower left Oasis WM	
✓ 4/27/17	0526	0497 - 042717 - DF-003-B		In room Hallway		
✓ 4/27/17	0532	0497 - 042717 - RS-001-A	RR in Boys' Locker	In room Hallway		
✓ 4/27/17	0533	0497 - 042717 - RS-001-B		In room Hallway		

LOCATION TYPE: AF = athletic field; CS = cafeteria sink; DF = drinking fountain; IM = ice maker; KS = kindergarten sink; RS = restroom sink; SC = service connection; TL = teachers' lounge. SAMPLE TYPE: A = initial draw; B = flush; C = duplicate

**DEKALB COUNTY SCHOOL DISTRICT
LEAD IN DRINKING WATER FIELD DATA SHEET**

FACILITY NAME: STEPHENSON HIGH FACILITY
ADDRESS: 701 Stephenson Road Stone Mtn, GA, 30087

FACILITY ID: 0497

DATE	TIME	SAMPLE ID (Facility ID-Date-Location Type-Sequential #-Sample Type)	NEAREST ROOM	LOCATION (circle)	DESCRIPTION	SAMPLER INIT.
4/27/17 ✓	0550	0497 - 042717 - DF-007-A	Behind Gym stage	In room Hallway	Lower left Elkay WPI	CS
4/27/17 ✓	0551	0497 - 042717 - DF-007-B	"	In room Hallway		CS
4/27/17 ✓	0552	0497 - 042717 - DF-008-A	"	In room Hallway	Upper right Elkay WPI	CS
4/27/17 ✓	0553	0497 - 042717 - DF-008-B	"	In room Hallway		CS
4/27/17		0497 - 042717 -		In room Hallway		
4/27/17		0497 - 042717 -		In room Hallway		
4/27/17		0497 - 042717 -		In room Hallway		
4/27/17		0497 - 042717 -		In room Hallway		
4/27/17		0497 - 042717 -		In room Hallway		
4/27/17		0497 - 042717 -		In room Hallway		

LOCATION TYPE: AF = athletic field; CS = cafeteria sink; DF = drinking fountain; IM = ice maker; KS = kindergarten sink; RS = restroom sink; SC = service connection; TL = teachers' lounge. SAMPLE TYPE: A = initial draw; B = flush; C = duplicate

**DEKALB COUNTY SCHOOL DISTRICT
LEAD IN DRINKING WATER FIELD DATA SHEET**

FACILITY NAME: STEPHENSON HIGH FACILITY
 ADDRESS: 701 Stephenson Road Stone Mtn, GA, 30087

FACILITY ID: 0497

DATE	TIME	SAMPLE ID (Facility ID-Date-Location Type-Sequential #-Sample Type)	NEAREST ROOM	LOCATION (circle)	DESCRIPTION	SAMPLER INIT.
10/13/17	0527	0497 - 101317 - CS-005-A	310	In room Hallway	Back right sink in 310	A
10/13/17	0528	0497 - 101317 - CS-005-B	11	In room Hallway	,	A
10/13/17		0497 - 101317 -		In room Hallway		
10/13/17		0497 - 101317 -		In room Hallway		
10/13/17		0497 - 101317 -		In room Hallway		
10/13/17		0497 - 101317 -		In room Hallway		
10/13/17		0497 - 101317 -		In room Hallway		
10/13/17		0497 - 101317 -		In room Hallway		
10/13/17		0497 - 101317 -		In room Hallway		
10/13/17		0497 - 101317 -		In room Hallway		

LOCATION TYPE: AF = athletic field; CS = cafeteria sink; DF = drinking fountain; IM = ice maker; KS = kindergarten sink; RS = restroom sink; SC = service connection; TL = teachers' lounge. SAMPLE TYPE: A = initial draw; B = flush; C = duplicate

ATTACHMENT B
AES Laboratory Analytical Report

Leona Miles

From: NoReply@aesatlanta.net
Sent: Thursday, May 11, 2017 10:02 AM
To: leona-miles@aem-net.com; tim-royer@aem-net.com
Subject: DCSD - 0497
Attachments: 1704M38_REPORT.pdf; 1704M38Invoice.pdf

Please see attached. If you have any questions or need further assistance please contact your project manager at 770-457-8177.

AES Reporting System

ANALYTICAL ENVIRONMENTAL SERVICES, INC.
3080 Presidential Drive ATLANTA, GA 30340
Tel: 770-457-8177 Fax: 770-457-8188
<http://www.aesatlanta.com>

NOTICE OF CONFIDENTIALITY: The information in this email and / or attachments may be legally privileged and is confidential information intended for the use of the individual or entity named in the email address. If the reader of this message is not the intended recipient, you are hereby notified that any use, dissemination, distribution, or copy of this email and / or attachments is strictly prohibited. If you have received this email in error, please notify Analytical Environmental Services Customer Service by telephone at (770) 457-8177 or by email at info@aesatlanta.com <<mailto:info@aesatlanta.com>> and delete the message. Thank you



May 11, 2017

Leona Miles
Atlanta Environmental Mgmt
2580 NE Expressway
Atlanta GA 30345

TEL: (404) 329-9006
FAX: (404) 329-2057

RE: DCSD - 0497

Dear Leona Miles:

Order No: 1704M38

Analytical Environmental Services, Inc. received **88** samples on 4/27/2017 8:22:00 AM for the analyses presented in following report.

No problems were encountered during the analyses. Additionally, all results for the associated Quality Control samples were within EPA and/or AES established limits. Any discrepancies associated with the analyses contained herein will be noted and submitted in the form of a project Case Narrative.

AES's accreditations are as follows:

-NELAC/Florida State Laboratory ID E87582 for analysis of Non-Potable Water, Solid & Chemical Materials, and Drinking Water Microbiology, effective 07/01/16-06/30/17.

State of Georgia, Department of Natural Resources ID #800 for analysis of Drinking Water Metals, effective 07/01/16-06/30/17 and Total Coliforms and E. coli, effective 04/25/17-04/24/20.

-NELAC/Louisiana Agency Interest No. 100818 for or analysis of Non-Potable Water and Solid & Chemical Materials, effective 07/01/16-06/30/17.

-AIHA-LAP, LLC Laboratory ID: 100671 for Industrial Hygiene samples (Organics, Metals, PCM Asbestos, Gravimetric), Environmental Lead (Paint, Soil, Dust Wipes, Air), and

Ioana Pacurar
Project Manager



ANALYTICAL ENVIRONMENTAL SERVICES, INC

3080 Presidential Drive, Atlanta GA 30340-3704
TEL.: (770) 457-8177 / TOLL-FREE (800) 972-4889 / FAX: (770) 457-8188

CHAIN OF CUSTODY

Work Order: 1404138

Date: 4/27/17 Page 2 of 7

Form containing company and address information, analysis requested details, sample list with IDs and dates, and receipt information. Includes sections for 'ANALYSIS REQUESTED', 'RECEIPT', and 'SPECIAL INSTRUCTIONS/COMMENTS'.

MATRIX CODES: A = Air GW = Groundwater SE = Sediment SO = Soil SW = Surface Water DW=Drinking Water W = Water (BlanDF) O = Other (specify)
PRESERVATIVE CODES: H+I = Hydrochloric acid + ice I = Ice only N = Nitric acid S+I = Sulfuric acid + ice S/M+I = Sodium Bisulfate/Methanol + ice O = Other (specify) NA = None



ANALYTICAL ENVIRONMENTAL SERVICES, INC

3080 Presidential Drive, Atlanta GA 30340-3704
TEL.: (770) 457-8177 / TOLL-FREE (800) 972-4889 / FAX: (770) 457-8188

CHAIN OF CUSTODY

Work Order: 1704438

Date: 4/27/17 Page 3 of 7

Form containing company information, analysis requested details, sample list with columns for #, Sample ID, Date, Time, Grab, Composite, Matrix, and Total Pb Method 200.8. Includes sections for Relinquished/Received by, Project Information, and Special Instructions.

MATRIX CODES: A = Air GW = Groundwater SE = Sediment SO = Soil SW = Surface Water DW=Drinking Water W = Water (Blanks) O = Other (specify)
PRESERVATIVE CODES: H+I = Hydrochloric acid + ice I = Ice only N = Nitric acid S+I = Sulfuric acid + ice S/M+I = Sodium Bisulfate/Methanol + ice O = Other (specify) NA = None



COMPANY: Atlanta Environmental Management, Inc		ADDRESS: 2580 Northeast Expressway, NE Atlanta, GA 30345		ANALYSIS REQUESTED												Visit our website www.aesatlanta.com to check on the status of your results, place bottle orders, etc.		No # of Containers		
PHONE: (404) 329-9006		FAX: (404) 329-2057		Total Pb Method 200.8	PRESERVATION (See codes)														REMARKS	
SAMPLED BY: <i>Cynthia Jackson</i>		SIGNATURE: <i>[Signature]</i>																		
#	SAMPLE ID	DATE	TIME	Grab	Composite	Matrix (See codes)	I													
1	0497-042717-DF-023-A	4/27/2017	0533	X		DW	X													
2	0497-042717-DF-023-B	4/27/2017	0534	X		DW	X													
3	0497-042717-DF-024-A	4/27/2017	0535	X		DW	X													
4	0497-042717-DF-024-B	4/27/2017	0536	X		DW	X													
5	0497-042717-DF-025-A	4/27/2017	0539	X		DW	X													
6	0497-042717-DF-025-B	4/27/2017	0540	X		DW	X													
7	0497-042717-DF-026-A	4/27/2017	0541	X		DW	X													
8	0497-042717-DF-026-B	4/27/2017	0542	X		DW	X													
9	0497-042717-RS-001-A	4/27/2017	0532	X		DW	X													
10	0497-042717-RS-001-B	4/27/2017	0533	X		DW	X													
11	0497-042717-RS-002-A	4/27/2017	0532	X		DW	X													
12	0497-042717-RS-002-B	4/27/2017	0533	X		DW	X													
13	0497-042717-RS-003-A	4/27/2017	0601	X		DW	X													
14	0497-042717-RS-003-B	4/27/2017	0602	X		DW	X													
15	0497-042717-RS-004-A	4/27/2017	0545	X		DW	X													
RELINQUISHED BY		DATE/TIME		RECEIVED BY		DATE/TIME		PROJECT INFORMATION								RECEIPT				
1: <i>[Signature]</i>		4/27/17 0748		1: <i>[Signature]</i>		4/27/17 0748		PROJECT NAME: DCSD								Total # of Containers				
2: <i>[Signature]</i>		4/27/17 0822		2: <i>[Signature]</i>		4/27/17 0822		PROJECT #: 1561-1601								Turnaround Time Request				
3:				3:				SITE ADDRESS: 497								<input type="radio"/> Standard 5 Business Days <input type="radio"/> 2 Business Day Rush <input type="radio"/> Next Business Day Rush <input type="radio"/> Same Day Rush (auth req.) <input checked="" type="radio"/> Other: 10 business Days				
SPECIAL INSTRUCTIONS/COMMENTS:				SHIPMENT METHOD				INVOICE TO:								STATE PROGRAM (if any):				
Preserve at the Lab per protocol				OUT / / VIA:				(IF DIFFERENT FROM ABOVE)								E-mail? Y / N; Fax? Y / N				
				IN <input checked="" type="radio"/> FedEx UPS MAIL COURIER				leona-niles@aem-net.com; tim-royer@aem-net.com								DATA PACKAGE: I II III IV				
				GREYHOUND OTHER				QUOTE #: _____ PO#: _____												

SAMPLES RECEIVED AFTER 3PM OR SATURDAY ARE CONSIDERED AS RECEIVED ON THE NEXT BUSINESS DAY; IF NO TAT IS MARKED ON COC AES WILL PROCEED AS STANDARD TAT.
SAMPLES ARE DISPOSED OF 30 DAYS AFTER COMPLETION OF REPORT UNLESS OTHER ARRANGEMENTS ARE MADE.

MATRIX CODES: A = Air GW = Groundwater SE = Sediment SO = Soil SW = Surface Water DW = Drinking Water W = Water (Blanks) O = Other (specify)

PRESERVATIVE CODES: H+I = Hydrochloric acid + ice I = Ice only N = Nitric acid S+I = Sulfuric acid + ice S/M+I = Sodium Bisulfate/Methanol + ice O = Other (specify) NA = None



ANALYTICAL ENVIRONMENTAL SERVICES, INC

3080 Presidential Drive, Atlanta GA 30340-3704
TEL.: (770) 457-8177 / TOLL-FREE (800) 972-4889 / FAX: (770) 457-8188

CHAIN OF CUSTODY

Work Order: 17041138

Date: 4/27/17 Page 5 of 7

Form containing company information, analysis requested details, sample list with dates and times, and receipt/signature sections.

MATRIX CODES: A = Air GW = Groundwater SE = Sediment SO = Soil SW = Surface Water DW=Drinking Water W = Water (Blanks) O = Other (specify)

PRESERVATIVE CODES: H+I = Hydrochloric acid + ice I = Ice only N = Nitric acid S+I = Sulfuric acid + ice S/M+I = Sodium Bisulfate/Methanol + ice O = Other (specify) NA = None



COMPANY: Atlanta Environmental Management, Inc			ADDRESS: 2580 Northeast Expressway, NE Atlanta, GA 30345			ANALYSIS REQUESTED										Visit our website www.aesatlanta.com to check on the status of your results, place bottle orders, etc.		No # of Containers						
PHONE: (404) 329-9006			FAX: (404) 329-2057			Total Pb Method 200.8	PRESERVATION (See codes)										REMARKS							
SAMPLED BY: <i>[Signature]</i>			SIGNATURE: <i>[Signature]</i>																					
#	SAMPLE ID	SAMPLED		Grab	Composite	Matrix (See codes)											REMARKS							
		DATE	TIME				I																	
1	0497-042717-RS-004-B	4/27/2017	0546	X		DW	X																	
2	0497-042717-TL-001-A	4/27/2017	0514	X		DW	X																	
3	0497-042717-TL-001-B	4/27/2017	0515	X		DW	X																	
4	0497-042717-TL-002-A	4/27/2017	0515	X		DW	X																	
5	0497-042717-TL-002-B	4/27/2017	0516	X		DW	X																	
6	0497-042717-TL-003-A	4/27/2017	0527	X		DW	X																	
7	0497-042717-TL-003-B	4/27/2017	0529	X		DW	X																	
8	0497-042717-TL-003-C	4/27/2017	0528	X		DW	X																	
9	0497-042717-IM-001-A	4/27/2017		X		DW																		not sampled
10	0497-042717-IM-002-A	4/27/2017	0459	X		DW	X																	
11	0497-042717-IM-003-A	4/27/2017		X		DW																		not sampled
12	0497-042717-OT-001-A	4/27/2017	0510	X		DW	X																	
13	0497-042717-OT-001-B	4/27/2017	0511	X		DW	X																	
14	0497-042717-AF-001-A	4/27/2017	0550	X		DW	X																	
15	0497-042717-AF-001-B	4/27/2017	0551	X		DW	X																	
RELINQUISHED BY		DATE/TIME		RECEIVED BY		DATE/TIME		PROJECT INFORMATION										RECEIPT						
1: <i>[Signature]</i>		4/27/17 0748		1: <i>[Signature]</i>		4/27/17 0748		PROJECT NAME: DCSD										Total # of Containers						
2: <i>[Signature]</i>		4/27/17 0822		2: <i>[Signature]</i>		4/27/17 0822		PROJECT #: 1561-1601										Turnaround Time Request						
3:				3:				SITE ADDRESS: 497										<input type="radio"/> Standard 5 Business Days						
								SEND REPORT TO: Leona Miles and Tim Royer										<input type="radio"/> 2 Business Day Rush						
								INVOICE TO: (IF DIFFERENT FROM ABOVE) leona-miles@aem-net.com; tim-royer@aem-net.com										<input type="radio"/> Next Business Day Rush						
								QUOTE #:										PO#:						
																		<input type="radio"/> Same Day Rush (auth req.)						
																		<input checked="" type="radio"/> Other: 10 business Days						
SPECIAL INSTRUCTIONS/COMMENTS: Preserve at the Lab per protocol				SHIPMENT METHOD OUT / / VIA: IN / / VIA: <input checked="" type="radio"/> CLIENT FedEx UPS MAIL COURIER <input type="radio"/> GREYHOUND OTHER														STATE PROGRAM (if any):						
																		E-mail? Y/N; Fax? Y/N						
																		DATA PACKAGE: I II III IV						

SAMPLES RECEIVED AFTER 3PM OR SATURDAY ARE CONSIDERED AS RECEIVED ON THE NEXT BUSINESS DAY; IF NO TAT IS MARKED ON COC AES WILL PROCEED AS STANDARD TAT.

SAMPLES ARE DISPOSED OF 30 DAYS AFTER COMPLETION OF REPORT UNLESS OTHER ARRANGEMENTS ARE MADE.

MATRIX CODES: A = Air GW = Groundwater SE = Sediment SO = Soil SW = Surface Water DW=Drinking Water W = Water (Blanks) O = Other (specify)

PRESERVATIVE CODES: H+I = Hydrochloric acid + ice I = Ice only N = Nitric acid S+I = Sulfuric acid + ice S/M+I = Sodium Bisulfate/Methanol + ice O = Other (specify) NA = None



ANALYTICAL ENVIRONMENTAL SERVICES, INC

3080 Presidential Drive, Atlanta GA 30340-3704
TEL.: (770) 457-8177 / TOLL-FREE (800) 972-4889 / FAX: (770) 457-8188

CHAIN OF CUSTODY

Work Order: 1404138

Date: 4/27/17 Page 7 of 7

Form containing company information (Atlanta Environmental Management, Inc), address (2580 Northeast Expressway, NE Atlanta, GA 30345), phone/fax numbers, sampling details (Cynthia Jackson), analysis requested (Total Pb Method 200.8), sample table with columns for #, SAMPLE ID, DATE, TIME, Grab, Composite, Matrix, and REMARKS. Includes sections for RELINQUISHED BY, RECEIVED BY, PROJECT INFORMATION (DCSD, 1561-1601), and SPECIAL INSTRUCTIONS/COMMENTS.

MATRIX CODES: A = Air GW = Groundwater SE = Sediment SO = Soil SW = Surface Water DW=Drinking Water W = Water (Blanks) O = Other (specify)
PRESERVATIVE CODES: H+I = Hydrochloric acid + ice I = Ice only N = Nitric acid S+I = Sulfuric acid + ice S/M+I = Sodium Bisulfate/Methanol + ice O = Other (specify) NA = None

Analytical Environmental Services, Inc

Date: 11-May-17

Client: Atlanta Environmental Mgmt	Client Sample ID: 0497-042717-DF-002-A
Project Name: DCSD - 0497	Collection Date: 4/27/2017 5:23:00 AM
Lab ID: 1704M38-001	Matrix: Drinking Water

Analyses	Result	Reporting Limit	Qual	Units	BatchID	Dilution Factor	Date Analyzed	Analyst
Trace Elements by ICP/MS E200.8								
					(E200.2)			
Lead	1.25	1.00		ug/L	242189	1	05/08/2017 18:15	JR

Qualifiers:

- * Value exceeds maximum contaminant level
- BRL Below reporting limit
- H Holding times for preparation or analysis exceeded
- N Analyte not NELAC certified
- B Analyte detected in the associated method blank
- > Greater than Result value

- E Estimated (value above quantitation range)
- S Spike Recovery outside limits due to matrix
- Narr See case narrative
- NC Not confirmed
- < Less than Result value
- J Estimated value detected below Reporting Limit

Analytical Environmental Services, Inc

Date: 11-May-17

Client: Atlanta Environmental Mgmt	Client Sample ID: 0497-042717-DF-002-B
Project Name: DCSD - 0497	Collection Date: 4/27/2017 5:24:00 AM
Lab ID: 1704M38-002	Matrix: Drinking Water

Analyses	Result	Reporting Limit	Qual	Units	BatchID	Dilution Factor	Date Analyzed	Analyst
Trace Elements by ICP/MS E200.8					(E200.2)			
Lead	5.14	1.00		ug/L	242189	1	05/08/2017 18:33	JR

Qualifiers:

- * Value exceeds maximum contaminant level
- BRL Below reporting limit
- H Holding times for preparation or analysis exceeded
- N Analyte not NELAC certified
- B Analyte detected in the associated method blank
- > Greater than Result value

- E Estimated (value above quantitation range)
- S Spike Recovery outside limits due to matrix
- Narr See case narrative
- NC Not confirmed
- < Less than Result value
- J Estimated value detected below Reporting Limit

Analytical Environmental Services, Inc

Date: 11-May-17

Client: Atlanta Environmental Mgmt	Client Sample ID: 0497-042717-DF-003-A
Project Name: DCSD - 0497	Collection Date: 4/27/2017 5:25:00 AM
Lab ID: 1704M38-003	Matrix: Drinking Water

Analyses	Result	Reporting Limit	Qual	Units	BatchID	Dilution Factor	Date Analyzed	Analyst
Trace Elements by ICP/MS E200.8								
				(E200.2)				
Lead	1.14	1.00		ug/L	242189	1	05/08/2017 18:36	JR

Qualifiers:

- * Value exceeds maximum contaminant level
- BRL Below reporting limit
- H Holding times for preparation or analysis exceeded
- N Analyte not NELAC certified
- B Analyte detected in the associated method blank
- > Greater than Result value

- E Estimated (value above quantitation range)
- S Spike Recovery outside limits due to matrix
- Narr See case narrative
- NC Not confirmed
- < Less than Result value
- J Estimated value detected below Reporting Limit

Analytical Environmental Services, Inc

Date: 11-May-17

Client: Atlanta Environmental Mgmt	Client Sample ID: 0497-042717-DF-003-B
Project Name: DCSD - 0497	Collection Date: 4/27/2017 5:26:00 AM
Lab ID: 1704M38-004	Matrix: Drinking Water

Analyses	Result	Reporting Limit	Qual	Units	BatchID	Dilution Factor	Date Analyzed	Analyst
Trace Elements by ICP/MS E200.8					(E200.2)			
Lead	1.48	1.00		ug/L	242189	1	05/08/2017 18:50	JR

Qualifiers:

- * Value exceeds maximum contaminant level
- BRL Below reporting limit
- H Holding times for preparation or analysis exceeded
- N Analyte not NELAC certified
- B Analyte detected in the associated method blank
- > Greater than Result value

- E Estimated (value above quantitation range)
- S Spike Recovery outside limits due to matrix
- Narr See case narrative
- NC Not confirmed
- < Less than Result value
- J Estimated value detected below Reporting Limit

Analytical Environmental Services, Inc

Date: 11-May-17

Client: Atlanta Environmental Mgmt	Client Sample ID: 0497-042717-DF-004-A
Project Name: DCSD - 0497	Collection Date: 4/27/2017 5:43:00 AM
Lab ID: 1704M38-005	Matrix: Drinking Water

Analyses	Result	Reporting Limit	Qual	Units	BatchID	Dilution Factor	Date Analyzed	Analyst
Trace Elements by ICP/MS E200.8					(E200.2)			
Lead	BRL	1.00		ug/L	242189	1	05/08/2017 18:54	JR

Qualifiers:

- * Value exceeds maximum contaminant level
- BRL Below reporting limit
- H Holding times for preparation or analysis exceeded
- N Analyte not NELAC certified
- B Analyte detected in the associated method blank
- > Greater than Result value

- E Estimated (value above quantitation range)
- S Spike Recovery outside limits due to matrix
- Narr See case narrative
- NC Not confirmed
- < Less than Result value
- J Estimated value detected below Reporting Limit

Analytical Environmental Services, Inc

Date: 11-May-17

Client: Atlanta Environmental Mgmt	Client Sample ID: 0497-042717-DF-004-B
Project Name: DCSD - 0497	Collection Date: 4/27/2017 5:44:00 AM
Lab ID: 1704M38-006	Matrix: Drinking Water

Analyses	Result	Reporting Limit	Qual	Units	BatchID	Dilution Factor	Date Analyzed	Analyst
Trace Elements by ICP/MS E200.8					(E200.2)			
Lead	BRL	1.00		ug/L	242189	1	05/08/2017 18:57	JR

Qualifiers:

- * Value exceeds maximum contaminant level
- BRL Below reporting limit
- H Holding times for preparation or analysis exceeded
- N Analyte not NELAC certified
- B Analyte detected in the associated method blank
- > Greater than Result value

- E Estimated (value above quantitation range)
- S Spike Recovery outside limits due to matrix
- Narr See case narrative
- NC Not confirmed
- < Less than Result value
- J Estimated value detected below Reporting Limit

Analytical Environmental Services, Inc

Date: 11-May-17

Client: Atlanta Environmental Mgmt	Client Sample ID: 0497-042717-DF-005-A
Project Name: DCSD - 0497	Collection Date: 4/27/2017 5:41:00 AM
Lab ID: 1704M38-007	Matrix: Drinking Water

Analyses	Result	Reporting Limit	Qual	Units	BatchID	Dilution Factor	Date Analyzed	Analyst
Trace Elements by ICP/MS E200.8								
				(E200.2)				
Lead	BRL	1.00		ug/L	242189	1	05/08/2017 19:01	JR

Qualifiers:

- * Value exceeds maximum contaminant level
- BRL Below reporting limit
- H Holding times for preparation or analysis exceeded
- N Analyte not NELAC certified
- B Analyte detected in the associated method blank
- > Greater than Result value

- E Estimated (value above quantitation range)
- S Spike Recovery outside limits due to matrix
- Narr See case narrative
- NC Not confirmed
- < Less than Result value
- J Estimated value detected below Reporting Limit

Analytical Environmental Services, Inc

Date: 11-May-17

Client: Atlanta Environmental Mgmt	Client Sample ID: 0497-042717-DF-005-B
Project Name: DCSD - 0497	Collection Date: 4/27/2017 5:42:00 AM
Lab ID: 1704M38-008	Matrix: Drinking Water

Analyses	Result	Reporting Limit	Qual	Units	BatchID	Dilution Factor	Date Analyzed	Analyst
Trace Elements by ICP/MS E200.8					(E200.2)			
Lead	1.87	1.00		ug/L	242189	1	05/08/2017 19:04	JR

Qualifiers:

- * Value exceeds maximum contaminant level
- BRL Below reporting limit
- H Holding times for preparation or analysis exceeded
- N Analyte not NELAC certified
- B Analyte detected in the associated method blank
- > Greater than Result value

- E Estimated (value above quantitation range)
- S Spike Recovery outside limits due to matrix
- Narr See case narrative
- NC Not confirmed
- < Less than Result value
- J Estimated value detected below Reporting Limit

Analytical Environmental Services, Inc

Date: 11-May-17

Client: Atlanta Environmental Mgmt	Client Sample ID: 0497-042717-DF-006-A
Project Name: DCSD - 0497	Collection Date: 4/27/2017 5:35:00 AM
Lab ID: 1704M38-009	Matrix: Drinking Water

Analyses	Result	Reporting Limit	Qual	Units	BatchID	Dilution Factor	Date Analyzed	Analyst
Trace Elements by ICP/MS E200.8					(E200.2)			
Lead	1.23	1.00		ug/L	242189	1	05/08/2017 19:08	JR

Qualifiers:

- * Value exceeds maximum contaminant level
- BRL Below reporting limit
- H Holding times for preparation or analysis exceeded
- N Analyte not NELAC certified
- B Analyte detected in the associated method blank
- > Greater than Result value

- E Estimated (value above quantitation range)
- S Spike Recovery outside limits due to matrix
- Narr See case narrative
- NC Not confirmed
- < Less than Result value
- J Estimated value detected below Reporting Limit

Analytical Environmental Services, Inc

Date: 11-May-17

Client: Atlanta Environmental Mgmt	Client Sample ID: 0497-042717-DF-006-B
Project Name: DCSD - 0497	Collection Date: 4/27/2017 5:36:00 AM
Lab ID: 1704M38-010	Matrix: Drinking Water

Analyses	Result	Reporting Limit	Qual	Units	BatchID	Dilution Factor	Date Analyzed	Analyst
Trace Elements by ICP/MS E200.8					(E200.2)			
Lead	1.11	1.00		ug/L	242189	1	05/08/2017 19:11	JR

Qualifiers:

- * Value exceeds maximum contaminant level
- BRL Below reporting limit
- H Holding times for preparation or analysis exceeded
- N Analyte not NELAC certified
- B Analyte detected in the associated method blank
- > Greater than Result value

- E Estimated (value above quantitation range)
- S Spike Recovery outside limits due to matrix
- Narr See case narrative
- NC Not confirmed
- < Less than Result value
- J Estimated value detected below Reporting Limit

Analytical Environmental Services, Inc

Date: 11-May-17

Client: Atlanta Environmental Mgmt	Client Sample ID: 0497-042717-DF-006-C
Project Name: DCSD - 0497	Collection Date: 4/27/2017 5:37:00 AM
Lab ID: 1704M38-011	Matrix: Drinking Water

Analyses	Result	Reporting Limit	Qual	Units	BatchID	Dilution Factor	Date Analyzed	Analyst
Trace Elements by ICP/MS E200.8					(E200.2)			
Lead	1.00	1.00		ug/L	242189	1	05/08/2017 18:26	JR

Qualifiers:

- * Value exceeds maximum contaminant level
- BRL Below reporting limit
- H Holding times for preparation or analysis exceeded
- N Analyte not NELAC certified
- B Analyte detected in the associated method blank
- > Greater than Result value

- E Estimated (value above quantitation range)
- S Spike Recovery outside limits due to matrix
- Narr See case narrative
- NC Not confirmed
- < Less than Result value
- J Estimated value detected below Reporting Limit

Analytical Environmental Services, Inc

Date: 11-May-17

Client: Atlanta Environmental Mgmt	Client Sample ID: 0497-042717-DF-007-A
Project Name: DCSD - 0497	Collection Date: 4/27/2017 5:50:00 AM
Lab ID: 1704M38-012	Matrix: Drinking Water

Analyses	Result	Reporting Limit	Qual	Units	BatchID	Dilution Factor	Date Analyzed	Analyst
Trace Elements by ICP/MS E200.8					(E200.2)			
Lead	BRL	1.00		ug/L	242189	1	05/08/2017 19:15	JR

Qualifiers:

- * Value exceeds maximum contaminant level
- BRL Below reporting limit
- H Holding times for preparation or analysis exceeded
- N Analyte not NELAC certified
- B Analyte detected in the associated method blank
- > Greater than Result value

- E Estimated (value above quantitation range)
- S Spike Recovery outside limits due to matrix
- Narr See case narrative
- NC Not confirmed
- < Less than Result value
- J Estimated value detected below Reporting Limit

Analytical Environmental Services, Inc

Date: 11-May-17

Client: Atlanta Environmental Mgmt	Client Sample ID: 0497-042717-DF-007-B
Project Name: DCSD - 0497	Collection Date: 4/27/2017 5:51:00 AM
Lab ID: 1704M38-013	Matrix: Drinking Water

Analyses	Result	Reporting Limit	Qual	Units	BatchID	Dilution Factor	Date Analyzed	Analyst
Trace Elements by ICP/MS E200.8					(E200.2)			
Lead	BRL	1.00		ug/L	242189	1	05/08/2017 19:18	JR

Qualifiers:

- * Value exceeds maximum contaminant level
- BRL Below reporting limit
- H Holding times for preparation or analysis exceeded
- N Analyte not NELAC certified
- B Analyte detected in the associated method blank
- > Greater than Result value

- E Estimated (value above quantitation range)
- S Spike Recovery outside limits due to matrix
- Narr See case narrative
- NC Not confirmed
- < Less than Result value
- J Estimated value detected below Reporting Limit

Analytical Environmental Services, Inc

Date: 11-May-17

Client: Atlanta Environmental Mgmt	Client Sample ID: 0497-042717-DF-008-A
Project Name: DCSD - 0497	Collection Date: 4/27/2017 5:52:00 AM
Lab ID: 1704M38-014	Matrix: Drinking Water

Analyses	Result	Reporting Limit	Qual	Units	BatchID	Dilution Factor	Date Analyzed	Analyst
Trace Elements by ICP/MS E200.8					(E200.2)			
Lead	BRL	1.00		ug/L	242189	1	05/08/2017 19:22	JR

Qualifiers:

- * Value exceeds maximum contaminant level
- BRL Below reporting limit
- H Holding times for preparation or analysis exceeded
- N Analyte not NELAC certified
- B Analyte detected in the associated method blank
- > Greater than Result value

- E Estimated (value above quantitation range)
- S Spike Recovery outside limits due to matrix
- Narr See case narrative
- NC Not confirmed
- < Less than Result value
- J Estimated value detected below Reporting Limit

Analytical Environmental Services, Inc

Date: 11-May-17

Client: Atlanta Environmental Mgmt	Client Sample ID: 0497-042717-DF-008-B
Project Name: DCSD - 0497	Collection Date: 4/27/2017 5:53:00 AM
Lab ID: 1704M38-015	Matrix: Drinking Water

Analyses	Result	Reporting Limit	Qual	Units	BatchID	Dilution Factor	Date Analyzed	Analyst
Trace Elements by ICP/MS E200.8								
				(E200.2)				
Lead	BRL	1.00		ug/L	242189	1	05/08/2017 19:36	JR

Qualifiers:

- * Value exceeds maximum contaminant level
- BRL Below reporting limit
- H Holding times for preparation or analysis exceeded
- N Analyte not NELAC certified
- B Analyte detected in the associated method blank
- > Greater than Result value

- E Estimated (value above quantitation range)
- S Spike Recovery outside limits due to matrix
- Narr See case narrative
- NC Not confirmed
- < Less than Result value
- J Estimated value detected below Reporting Limit

Analytical Environmental Services, Inc

Date: 11-May-17

Client: Atlanta Environmental Mgmt	Client Sample ID: 0497-042717-DF-009-A
Project Name: DCSD - 0497	Collection Date: 4/27/2017 4:56:00 AM
Lab ID: 1704M38-016	Matrix: Drinking Water

Analyses	Result	Reporting Limit	Qual	Units	BatchID	Dilution Factor	Date Analyzed	Analyst
Trace Elements by ICP/MS E200.8					(E200.2)			
Lead	BRL	1.00		ug/L	242189	1	05/08/2017 19:39	JR

Qualifiers:

- * Value exceeds maximum contaminant level
- BRL Below reporting limit
- H Holding times for preparation or analysis exceeded
- N Analyte not NELAC certified
- B Analyte detected in the associated method blank
- > Greater than Result value

- E Estimated (value above quantitation range)
- S Spike Recovery outside limits due to matrix
- Narr See case narrative
- NC Not confirmed
- < Less than Result value
- J Estimated value detected below Reporting Limit

Analytical Environmental Services, Inc

Date: 11-May-17

Client: Atlanta Environmental Mgmt	Client Sample ID: 0497-042717-DF-009-B
Project Name: DCSD - 0497	Collection Date: 4/27/2017 4:57:00 AM
Lab ID: 1704M38-017	Matrix: Drinking Water

Analyses	Result	Reporting Limit	Qual	Units	BatchID	Dilution Factor	Date Analyzed	Analyst
Trace Elements by ICP/MS E200.8					(E200.2)			
Lead	BRL	1.00		ug/L	242189	1	05/08/2017 19:42	JR

Qualifiers:

- * Value exceeds maximum contaminant level
- BRL Below reporting limit
- H Holding times for preparation or analysis exceeded
- N Analyte not NELAC certified
- B Analyte detected in the associated method blank
- > Greater than Result value

- E Estimated (value above quantitation range)
- S Spike Recovery outside limits due to matrix
- Narr See case narrative
- NC Not confirmed
- < Less than Result value
- J Estimated value detected below Reporting Limit

Analytical Environmental Services, Inc

Date: 11-May-17

Client: Atlanta Environmental Mgmt	Client Sample ID: 0497-042717-DF-010-A
Project Name: DCSD - 0497	Collection Date: 4/27/2017 4:58:00 AM
Lab ID: 1704M38-018	Matrix: Drinking Water

Analyses	Result	Reporting Limit	Qual	Units	BatchID	Dilution Factor	Date Analyzed	Analyst
Trace Elements by ICP/MS E200.8								
				(E200.2)				
Lead	BRL	1.00		ug/L	242189	1	05/08/2017 19:46	JR

Qualifiers:

- * Value exceeds maximum contaminant level
- BRL Below reporting limit
- H Holding times for preparation or analysis exceeded
- N Analyte not NELAC certified
- B Analyte detected in the associated method blank
- > Greater than Result value

- E Estimated (value above quantitation range)
- S Spike Recovery outside limits due to matrix
- Narr See case narrative
- NC Not confirmed
- < Less than Result value
- J Estimated value detected below Reporting Limit

Analytical Environmental Services, Inc

Date: 11-May-17

Client: Atlanta Environmental Mgmt	Client Sample ID: 0497-042717-DF-010-B
Project Name: DCSD - 0497	Collection Date: 4/27/2017 4:59:00 AM
Lab ID: 1704M38-019	Matrix: Drinking Water

Analyses	Result	Reporting Limit	Qual	Units	BatchID	Dilution Factor	Date Analyzed	Analyst
Trace Elements by ICP/MS E200.8								
				(E200.2)				
Lead	BRL	1.00		ug/L	242189	1	05/08/2017 19:49	JR

Qualifiers:

- * Value exceeds maximum contaminant level
- BRL Below reporting limit
- H Holding times for preparation or analysis exceeded
- N Analyte not NELAC certified
- B Analyte detected in the associated method blank
- > Greater than Result value

- E Estimated (value above quantitation range)
- S Spike Recovery outside limits due to matrix
- Narr See case narrative
- NC Not confirmed
- < Less than Result value
- J Estimated value detected below Reporting Limit

Analytical Environmental Services, Inc

Date: 11-May-17

Client: Atlanta Environmental Mgmt	Client Sample ID: 0497-042717-DF-011-A
Project Name: DCSD - 0497	Collection Date: 4/27/2017 5:07:00 AM
Lab ID: 1704M38-020	Matrix: Drinking Water

Analyses	Result	Reporting Limit	Qual	Units	BatchID	Dilution Factor	Date Analyzed	Analyst
Trace Elements by ICP/MS E200.8					(E200.2)			
Lead	BRL	1.00		ug/L	242189	1	05/08/2017 19:53	JR

Qualifiers:

- * Value exceeds maximum contaminant level
- BRL Below reporting limit
- H Holding times for preparation or analysis exceeded
- N Analyte not NELAC certified
- B Analyte detected in the associated method blank
- > Greater than Result value

- E Estimated (value above quantitation range)
- S Spike Recovery outside limits due to matrix
- Narr See case narrative
- NC Not confirmed
- < Less than Result value
- J Estimated value detected below Reporting Limit

Analytical Environmental Services, Inc

Date: 11-May-17

Client: Atlanta Environmental Mgmt	Client Sample ID: 0497-042717-DF-011-B
Project Name: DCSD - 0497	Collection Date: 4/27/2017 5:08:00 AM
Lab ID: 1704M38-021	Matrix: Drinking Water

Analyses	Result	Reporting Limit	Qual	Units	BatchID	Dilution Factor	Date Analyzed	Analyst
Trace Elements by ICP/MS E200.8					(E200.2)			
Lead	BRL	1.00		ug/L	242190	1	05/08/2017 20:03	JR

Qualifiers:

- * Value exceeds maximum contaminant level
- BRL Below reporting limit
- H Holding times for preparation or analysis exceeded
- N Analyte not NELAC certified
- B Analyte detected in the associated method blank
- > Greater than Result value

- E Estimated (value above quantitation range)
- S Spike Recovery outside limits due to matrix
- Narr See case narrative
- NC Not confirmed
- < Less than Result value
- J Estimated value detected below Reporting Limit

Analytical Environmental Services, Inc

Date: 11-May-17

Client: Atlanta Environmental Mgmt	Client Sample ID: 0497-042717-DF-012-A
Project Name: DCSD - 0497	Collection Date: 4/27/2017 5:09:00 AM
Lab ID: 1704M38-022	Matrix: Drinking Water

Analyses	Result	Reporting Limit	Qual	Units	BatchID	Dilution Factor	Date Analyzed	Analyst
Trace Elements by ICP/MS E200.8								
				(E200.2)				
Lead	BRL	1.00		ug/L	242190	1	05/08/2017 20:31	JR

Qualifiers:

- * Value exceeds maximum contaminant level
- BRL Below reporting limit
- H Holding times for preparation or analysis exceeded
- N Analyte not NELAC certified
- B Analyte detected in the associated method blank
- > Greater than Result value

- E Estimated (value above quantitation range)
- S Spike Recovery outside limits due to matrix
- Narr See case narrative
- NC Not confirmed
- < Less than Result value
- J Estimated value detected below Reporting Limit

Analytical Environmental Services, Inc

Date: 11-May-17

Client: Atlanta Environmental Mgmt	Client Sample ID: 0497-042717-DF-012-B
Project Name: DCSD - 0497	Collection Date: 4/27/2017 5:10:00 AM
Lab ID: 1704M38-023	Matrix: Drinking Water

Analyses	Result	Reporting Limit	Qual	Units	BatchID	Dilution Factor	Date Analyzed	Analyst
Trace Elements by ICP/MS E200.8					(E200.2)			
Lead	BRL	1.00		ug/L	242190	1	05/08/2017 20:35	JR

Qualifiers:

- * Value exceeds maximum contaminant level
- BRL Below reporting limit
- H Holding times for preparation or analysis exceeded
- N Analyte not NELAC certified
- B Analyte detected in the associated method blank
- > Greater than Result value

- E Estimated (value above quantitation range)
- S Spike Recovery outside limits due to matrix
- Narr See case narrative
- NC Not confirmed
- < Less than Result value
- J Estimated value detected below Reporting Limit

Analytical Environmental Services, Inc

Date: 11-May-17

Client: Atlanta Environmental Mgmt	Client Sample ID: 0497-042717-DF-013-A
Project Name: DCSD - 0497	Collection Date: 4/27/2017 5:20:00 AM
Lab ID: 1704M38-024	Matrix: Drinking Water

Analyses	Result	Reporting Limit	Qual	Units	BatchID	Dilution Factor	Date Analyzed	Analyst
Trace Elements by ICP/MS E200.8								
				(E200.2)				
Lead	BRL	1.00		ug/L	242190	1	05/08/2017 20:38	JR

Qualifiers:

- * Value exceeds maximum contaminant level
- BRL Below reporting limit
- H Holding times for preparation or analysis exceeded
- N Analyte not NELAC certified
- B Analyte detected in the associated method blank
- > Greater than Result value

- E Estimated (value above quantitation range)
- S Spike Recovery outside limits due to matrix
- Narr See case narrative
- NC Not confirmed
- < Less than Result value
- J Estimated value detected below Reporting Limit

Analytical Environmental Services, Inc

Date: 11-May-17

Client: Atlanta Environmental Mgmt	Client Sample ID: 0497-042717-DF-013-B
Project Name: DCSD - 0497	Collection Date: 4/27/2017 5:21:00 AM
Lab ID: 1704M38-025	Matrix: Drinking Water

Analyses	Result	Reporting Limit	Qual	Units	BatchID	Dilution Factor	Date Analyzed	Analyst
Trace Elements by ICP/MS E200.8								
				(E200.2)				
Lead	BRL	1.00		ug/L	242190	1	05/08/2017 20:42	JR

Qualifiers:

- * Value exceeds maximum contaminant level
- BRL Below reporting limit
- H Holding times for preparation or analysis exceeded
- N Analyte not NELAC certified
- B Analyte detected in the associated method blank
- > Greater than Result value

- E Estimated (value above quantitation range)
- S Spike Recovery outside limits due to matrix
- Narr See case narrative
- NC Not confirmed
- < Less than Result value
- J Estimated value detected below Reporting Limit

Analytical Environmental Services, Inc

Date: 11-May-17

Client: Atlanta Environmental Mgmt	Client Sample ID: 0497-042717-DF-014-A
Project Name: DCSD - 0497	Collection Date: 4/27/2017 5:22:00 AM
Lab ID: 1704M38-026	Matrix: Drinking Water

Analyses	Result	Reporting Limit	Qual	Units	BatchID	Dilution Factor	Date Analyzed	Analyst
Trace Elements by ICP/MS E200.8								
				(E200.2)				
Lead	BRL	1.00		ug/L	242190	1	05/08/2017 20:45	JR

Qualifiers:

- * Value exceeds maximum contaminant level
- BRL Below reporting limit
- H Holding times for preparation or analysis exceeded
- N Analyte not NELAC certified
- B Analyte detected in the associated method blank
- > Greater than Result value

- E Estimated (value above quantitation range)
- S Spike Recovery outside limits due to matrix
- Narr See case narrative
- NC Not confirmed
- < Less than Result value
- J Estimated value detected below Reporting Limit

Analytical Environmental Services, Inc

Date: 11-May-17

Client: Atlanta Environmental Mgmt	Client Sample ID: 0497-042717-DF-014-B
Project Name: DCSD - 0497	Collection Date: 4/27/2017 5:23:00 AM
Lab ID: 1704M38-027	Matrix: Drinking Water

Analyses	Result	Reporting Limit	Qual	Units	BatchID	Dilution Factor	Date Analyzed	Analyst
Trace Elements by ICP/MS E200.8								
				(E200.2)				
Lead	BRL	1.00		ug/L	242190	1	05/08/2017 20:49	JR

Qualifiers:

- * Value exceeds maximum contaminant level
- BRL Below reporting limit
- H Holding times for preparation or analysis exceeded
- N Analyte not NELAC certified
- B Analyte detected in the associated method blank
- > Greater than Result value

- E Estimated (value above quantitation range)
- S Spike Recovery outside limits due to matrix
- Narr See case narrative
- NC Not confirmed
- < Less than Result value
- J Estimated value detected below Reporting Limit

Analytical Environmental Services, Inc

Date: 11-May-17

Client: Atlanta Environmental Mgmt	Client Sample ID: 0497-042717-DF-015-A
Project Name: DCSD - 0497	Collection Date: 4/27/2017 5:37:00 AM
Lab ID: 1704M38-028	Matrix: Drinking Water

Analyses	Result	Reporting Limit	Qual	Units	BatchID	Dilution Factor	Date Analyzed	Analyst
Trace Elements by ICP/MS E200.8								
				(E200.2)				
Lead	BRL	1.00		ug/L	242190	1	05/08/2017 20:52	JR

Qualifiers:

- * Value exceeds maximum contaminant level
- BRL Below reporting limit
- H Holding times for preparation or analysis exceeded
- N Analyte not NELAC certified
- B Analyte detected in the associated method blank
- > Greater than Result value

- E Estimated (value above quantitation range)
- S Spike Recovery outside limits due to matrix
- Narr See case narrative
- NC Not confirmed
- < Less than Result value
- J Estimated value detected below Reporting Limit

Analytical Environmental Services, Inc

Date: 11-May-17

Client: Atlanta Environmental Mgmt	Client Sample ID: 0497-042717-DF-015-B
Project Name: DCSD - 0497	Collection Date: 4/27/2017 5:38:00 AM
Lab ID: 1704M38-029	Matrix: Drinking Water

Analyses	Result	Reporting Limit	Qual	Units	BatchID	Dilution Factor	Date Analyzed	Analyst
Trace Elements by ICP/MS E200.8					(E200.2)			
Lead	BRL	1.00		ug/L	242190	1	05/08/2017 21:06	JR

Qualifiers:

- * Value exceeds maximum contaminant level
- BRL Below reporting limit
- H Holding times for preparation or analysis exceeded
- N Analyte not NELAC certified
- B Analyte detected in the associated method blank
- > Greater than Result value

- E Estimated (value above quantitation range)
- S Spike Recovery outside limits due to matrix
- Narr See case narrative
- NC Not confirmed
- < Less than Result value
- J Estimated value detected below Reporting Limit

Analytical Environmental Services, Inc

Date: 11-May-17

Client: Atlanta Environmental Mgmt	Client Sample ID: 0497-042717-DF-016-A
Project Name: DCSD - 0497	Collection Date: 4/27/2017 5:35:00 AM
Lab ID: 1704M38-030	Matrix: Drinking Water

Analyses	Result	Reporting Limit	Qual	Units	BatchID	Dilution Factor	Date Analyzed	Analyst
Trace Elements by ICP/MS E200.8								
				(E200.2)				
Lead	BRL	1.00		ug/L	242190	1	05/08/2017 21:10	JR

Qualifiers:

- * Value exceeds maximum contaminant level
- BRL Below reporting limit
- H Holding times for preparation or analysis exceeded
- N Analyte not NELAC certified
- B Analyte detected in the associated method blank
- > Greater than Result value

- E Estimated (value above quantitation range)
- S Spike Recovery outside limits due to matrix
- Narr See case narrative
- NC Not confirmed
- < Less than Result value
- J Estimated value detected below Reporting Limit

Analytical Environmental Services, Inc

Date: 11-May-17

Client: Atlanta Environmental Mgmt	Client Sample ID: 0497-042717-DF-016-B
Project Name: DCSD - 0497	Collection Date: 4/27/2017 5:36:00 AM
Lab ID: 1704M38-031	Matrix: Drinking Water

Analyses	Result	Reporting Limit	Qual	Units	BatchID	Dilution Factor	Date Analyzed	Analyst
Trace Elements by ICP/MS E200.8								
				(E200.2)				
Lead	BRL	1.00		ug/L	242190	1	05/08/2017 20:24	JR

Qualifiers:

- * Value exceeds maximum contaminant level
- BRL Below reporting limit
- H Holding times for preparation or analysis exceeded
- N Analyte not NELAC certified
- B Analyte detected in the associated method blank
- > Greater than Result value

- E Estimated (value above quantitation range)
- S Spike Recovery outside limits due to matrix
- Narr See case narrative
- NC Not confirmed
- < Less than Result value
- J Estimated value detected below Reporting Limit

Analytical Environmental Services, Inc

Date: 11-May-17

Client: Atlanta Environmental Mgmt	Client Sample ID: 0497-042717-DF-017-A
Project Name: DCSD - 0497	Collection Date: 4/27/2017 5:20:00 AM
Lab ID: 1704M38-032	Matrix: Drinking Water

Analyses	Result	Reporting Limit	Qual	Units	BatchID	Dilution Factor	Date Analyzed	Analyst
Trace Elements by ICP/MS E200.8					(E200.2)			
Lead	BRL	1.00		ug/L	242190	1	05/08/2017 21:13	JR

Qualifiers:

- * Value exceeds maximum contaminant level
- BRL Below reporting limit
- H Holding times for preparation or analysis exceeded
- N Analyte not NELAC certified
- B Analyte detected in the associated method blank
- > Greater than Result value

- E Estimated (value above quantitation range)
- S Spike Recovery outside limits due to matrix
- Narr See case narrative
- NC Not confirmed
- < Less than Result value
- J Estimated value detected below Reporting Limit

Analytical Environmental Services, Inc

Date: 11-May-17

Client: Atlanta Environmental Mgmt	Client Sample ID: 0497-042717-DF-017-B
Project Name: DCSD - 0497	Collection Date: 4/27/2017 5:21:00 AM
Lab ID: 1704M38-033	Matrix: Drinking Water

Analyses	Result	Reporting Limit	Qual	Units	BatchID	Dilution Factor	Date Analyzed	Analyst
Trace Elements by ICP/MS E200.8								
				(E200.2)				
Lead	BRL	1.00		ug/L	242190	1	05/08/2017 21:16	JR

Qualifiers:

- * Value exceeds maximum contaminant level
- BRL Below reporting limit
- H Holding times for preparation or analysis exceeded
- N Analyte not NELAC certified
- B Analyte detected in the associated method blank
- > Greater than Result value

- E Estimated (value above quantitation range)
- S Spike Recovery outside limits due to matrix
- Narr See case narrative
- NC Not confirmed
- < Less than Result value
- J Estimated value detected below Reporting Limit

Analytical Environmental Services, Inc

Date: 11-May-17

Client: Atlanta Environmental Mgmt	Client Sample ID: 0497-042717-DF-018-A
Project Name: DCSD - 0497	Collection Date: 4/27/2017 5:22:00 AM
Lab ID: 1704M38-034	Matrix: Drinking Water

Analyses	Result	Reporting Limit	Qual	Units	BatchID	Dilution Factor	Date Analyzed	Analyst
Trace Elements by ICP/MS E200.8								
				(E200.2)				
Lead	BRL	1.00		ug/L	242190	1	05/08/2017 21:20	JR

Qualifiers:

- * Value exceeds maximum contaminant level
- BRL Below reporting limit
- H Holding times for preparation or analysis exceeded
- N Analyte not NELAC certified
- B Analyte detected in the associated method blank
- > Greater than Result value

- E Estimated (value above quantitation range)
- S Spike Recovery outside limits due to matrix
- Narr See case narrative
- NC Not confirmed
- < Less than Result value
- J Estimated value detected below Reporting Limit

Analytical Environmental Services, Inc

Date: 11-May-17

Client: Atlanta Environmental Mgmt	Client Sample ID: 0497-042717-DF-018-B
Project Name: DCSD - 0497	Collection Date: 4/27/2017 5:23:00 AM
Lab ID: 1704M38-035	Matrix: Drinking Water

Analyses	Result	Reporting Limit	Qual	Units	BatchID	Dilution Factor	Date Analyzed	Analyst
Trace Elements by ICP/MS E200.8					(E200.2)			
Lead	BRL	1.00		ug/L	242190	1	05/08/2017 21:23	JR

Qualifiers:

- * Value exceeds maximum contaminant level
- BRL Below reporting limit
- H Holding times for preparation or analysis exceeded
- N Analyte not NELAC certified
- B Analyte detected in the associated method blank
- > Greater than Result value

- E Estimated (value above quantitation range)
- S Spike Recovery outside limits due to matrix
- Narr See case narrative
- NC Not confirmed
- < Less than Result value
- J Estimated value detected below Reporting Limit

Analytical Environmental Services, Inc

Date: 11-May-17

Client: Atlanta Environmental Mgmt	Client Sample ID: 0497-042717-DF-019-A
Project Name: DCSD - 0497	Collection Date: 4/27/2017 5:51:00 AM
Lab ID: 1704M38-036	Matrix: Drinking Water

Analyses	Result	Reporting Limit	Qual	Units	BatchID	Dilution Factor	Date Analyzed	Analyst
Trace Elements by ICP/MS E200.8					(E200.2)			
Lead	BRL	1.00		ug/L	242190	1	05/08/2017 21:27	JR

Qualifiers:

- * Value exceeds maximum contaminant level
- BRL Below reporting limit
- H Holding times for preparation or analysis exceeded
- N Analyte not NELAC certified
- B Analyte detected in the associated method blank
- > Greater than Result value

- E Estimated (value above quantitation range)
- S Spike Recovery outside limits due to matrix
- Narr See case narrative
- NC Not confirmed
- < Less than Result value
- J Estimated value detected below Reporting Limit

Analytical Environmental Services, Inc

Date: 11-May-17

Client: Atlanta Environmental Mgmt	Client Sample ID: 0497-042717-DF-019-B
Project Name: DCSD - 0497	Collection Date: 4/27/2017 5:52:00 AM
Lab ID: 1704M38-037	Matrix: Drinking Water

Analyses	Result	Reporting Limit	Qual	Units	BatchID	Dilution Factor	Date Analyzed	Analyst
Trace Elements by ICP/MS E200.8								
				(E200.2)				
Lead	BRL	1.00		ug/L	242190	1	05/08/2017 21:30	JR

Qualifiers:

- * Value exceeds maximum contaminant level
- BRL Below reporting limit
- H Holding times for preparation or analysis exceeded
- N Analyte not NELAC certified
- B Analyte detected in the associated method blank
- > Greater than Result value

- E Estimated (value above quantitation range)
- S Spike Recovery outside limits due to matrix
- Narr See case narrative
- NC Not confirmed
- < Less than Result value
- J Estimated value detected below Reporting Limit

Analytical Environmental Services, Inc

Date: 11-May-17

Client: Atlanta Environmental Mgmt	Client Sample ID: 0497-042717-DF-020-A
Project Name: DCSD - 0497	Collection Date: 4/27/2017 5:53:00 AM
Lab ID: 1704M38-038	Matrix: Drinking Water

Analyses	Result	Reporting Limit	Qual	Units	BatchID	Dilution Factor	Date Analyzed	Analyst
Trace Elements by ICP/MS E200.8								
				(E200.2)				
Lead	BRL	1.00		ug/L	242190	1	05/08/2017 21:34	JR

Qualifiers:

- * Value exceeds maximum contaminant level
- BRL Below reporting limit
- H Holding times for preparation or analysis exceeded
- N Analyte not NELAC certified
- B Analyte detected in the associated method blank
- > Greater than Result value

- E Estimated (value above quantitation range)
- S Spike Recovery outside limits due to matrix
- Narr See case narrative
- NC Not confirmed
- < Less than Result value
- J Estimated value detected below Reporting Limit

Analytical Environmental Services, Inc

Date: 11-May-17

Client: Atlanta Environmental Mgmt	Client Sample ID: 0497-042717-DF-020-B
Project Name: DCSD - 0497	Collection Date: 4/27/2017 5:54:00 AM
Lab ID: 1704M38-039	Matrix: Drinking Water

Analyses	Result	Reporting Limit	Qual	Units	BatchID	Dilution Factor	Date Analyzed	Analyst
Trace Elements by ICP/MS E200.8								
				(E200.2)				
Lead	BRL	1.00		ug/L	242190	1	05/08/2017 21:37	JR

Qualifiers:

- * Value exceeds maximum contaminant level
- BRL Below reporting limit
- H Holding times for preparation or analysis exceeded
- N Analyte not NELAC certified
- B Analyte detected in the associated method blank
- > Greater than Result value

- E Estimated (value above quantitation range)
- S Spike Recovery outside limits due to matrix
- Narr See case narrative
- NC Not confirmed
- < Less than Result value
- J Estimated value detected below Reporting Limit

Analytical Environmental Services, Inc

Date: 11-May-17

Client: Atlanta Environmental Mgmt	Client Sample ID: 0497-042717-DF-021-A
Project Name: DCSD - 0497	Collection Date: 4/27/2017 5:56:00 AM
Lab ID: 1704M38-040	Matrix: Drinking Water

Analyses	Result	Reporting Limit	Qual	Units	BatchID	Dilution Factor	Date Analyzed	Analyst
Trace Elements by ICP/MS E200.8								
				(E200.2)				
Lead	BRL	1.00		ug/L	242190	1	05/08/2017 21:51	JR

Qualifiers:

- * Value exceeds maximum contaminant level
- BRL Below reporting limit
- H Holding times for preparation or analysis exceeded
- N Analyte not NELAC certified
- B Analyte detected in the associated method blank
- > Greater than Result value

- E Estimated (value above quantitation range)
- S Spike Recovery outside limits due to matrix
- Narr See case narrative
- NC Not confirmed
- < Less than Result value
- J Estimated value detected below Reporting Limit

Analytical Environmental Services, Inc

Date: 11-May-17

Client: Atlanta Environmental Mgmt	Client Sample ID: 0497-042717-DF-021-B
Project Name: DCSD - 0497	Collection Date: 4/27/2017 5:57:00 AM
Lab ID: 1704M38-041	Matrix: Drinking Water

Analyses	Result	Reporting Limit	Qual	Units	BatchID	Dilution Factor	Date Analyzed	Analyst
Trace Elements by ICP/MS E200.8					(E200.2)			
Lead	BRL	1.00		ug/L	242191	1	05/08/2017 22:02	JR

Qualifiers:

- * Value exceeds maximum contaminant level
- BRL Below reporting limit
- H Holding times for preparation or analysis exceeded
- N Analyte not NELAC certified
- B Analyte detected in the associated method blank
- > Greater than Result value

- E Estimated (value above quantitation range)
- S Spike Recovery outside limits due to matrix
- Narr See case narrative
- NC Not confirmed
- < Less than Result value
- J Estimated value detected below Reporting Limit

Analytical Environmental Services, Inc

Date: 11-May-17

Client: Atlanta Environmental Mgmt	Client Sample ID: 0497-042717-DF-022-A
Project Name: DCSD - 0497	Collection Date: 4/27/2017 5:58:00 AM
Lab ID: 1704M38-042	Matrix: Drinking Water

Analyses	Result	Reporting Limit	Qual	Units	BatchID	Dilution Factor	Date Analyzed	Analyst
Trace Elements by ICP/MS E200.8								
				(E200.2)				
Lead	BRL	1.00		ug/L	242191	1	05/08/2017 22:19	JR

Qualifiers:

- * Value exceeds maximum contaminant level
- BRL Below reporting limit
- H Holding times for preparation or analysis exceeded
- N Analyte not NELAC certified
- B Analyte detected in the associated method blank
- > Greater than Result value

- E Estimated (value above quantitation range)
- S Spike Recovery outside limits due to matrix
- Narr See case narrative
- NC Not confirmed
- < Less than Result value
- J Estimated value detected below Reporting Limit

Analytical Environmental Services, Inc

Date: 11-May-17

Client: Atlanta Environmental Mgmt	Client Sample ID: 0497-042717-DF-022-B
Project Name: DCSD - 0497	Collection Date: 4/27/2017 5:59:00 AM
Lab ID: 1704M38-043	Matrix: Drinking Water

Analyses	Result	Reporting Limit	Qual	Units	BatchID	Dilution Factor	Date Analyzed	Analyst
Trace Elements by ICP/MS E200.8					(E200.2)			
Lead	BRL	1.00		ug/L	242191	1	05/08/2017 22:23	JR

Qualifiers:

- * Value exceeds maximum contaminant level
- BRL Below reporting limit
- H Holding times for preparation or analysis exceeded
- N Analyte not NELAC certified
- B Analyte detected in the associated method blank
- > Greater than Result value

- E Estimated (value above quantitation range)
- S Spike Recovery outside limits due to matrix
- Narr See case narrative
- NC Not confirmed
- < Less than Result value
- J Estimated value detected below Reporting Limit

Analytical Environmental Services, Inc

Date: 11-May-17

Client: Atlanta Environmental Mgmt	Client Sample ID: 0497-042717-DF-023-A
Project Name: DCSD - 0497	Collection Date: 4/27/2017 5:33:00 AM
Lab ID: 1704M38-044	Matrix: Drinking Water

Analyses	Result	Reporting Limit	Qual	Units	BatchID	Dilution Factor	Date Analyzed	Analyst
Trace Elements by ICP/MS E200.8								
				(E200.2)				
Lead	BRL	1.00		ug/L	242191	1	05/08/2017 22:37	JR

Qualifiers:

- * Value exceeds maximum contaminant level
- BRL Below reporting limit
- H Holding times for preparation or analysis exceeded
- N Analyte not NELAC certified
- B Analyte detected in the associated method blank
- > Greater than Result value

- E Estimated (value above quantitation range)
- S Spike Recovery outside limits due to matrix
- Narr See case narrative
- NC Not confirmed
- < Less than Result value
- J Estimated value detected below Reporting Limit

Analytical Environmental Services, Inc

Date: 11-May-17

Client: Atlanta Environmental Mgmt	Client Sample ID: 0497-042717-DF-023-B
Project Name: DCSD - 0497	Collection Date: 4/27/2017 5:34:00 AM
Lab ID: 1704M38-045	Matrix: Drinking Water

Analyses	Result	Reporting Limit	Qual	Units	BatchID	Dilution Factor	Date Analyzed	Analyst
Trace Elements by ICP/MS E200.8								
				(E200.2)				
Lead	BRL	1.00		ug/L	242191	1	05/08/2017 22:40	JR

Qualifiers:

- * Value exceeds maximum contaminant level
- BRL Below reporting limit
- H Holding times for preparation or analysis exceeded
- N Analyte not NELAC certified
- B Analyte detected in the associated method blank
- > Greater than Result value

- E Estimated (value above quantitation range)
- S Spike Recovery outside limits due to matrix
- Narr See case narrative
- NC Not confirmed
- < Less than Result value
- J Estimated value detected below Reporting Limit

Analytical Environmental Services, Inc

Date: 11-May-17

Client: Atlanta Environmental Mgmt	Client Sample ID: 0497-042717-DF-024-A
Project Name: DCSD - 0497	Collection Date: 4/27/2017 5:35:00 AM
Lab ID: 1704M38-046	Matrix: Drinking Water

Analyses	Result	Reporting Limit	Qual	Units	BatchID	Dilution Factor	Date Analyzed	Analyst
Trace Elements by ICP/MS E200.8								
				(E200.2)				
Lead	BRL	1.00		ug/L	242191	1	05/08/2017 22:44	JR

Qualifiers:

- * Value exceeds maximum contaminant level
- BRL Below reporting limit
- H Holding times for preparation or analysis exceeded
- N Analyte not NELAC certified
- B Analyte detected in the associated method blank
- > Greater than Result value

- E Estimated (value above quantitation range)
- S Spike Recovery outside limits due to matrix
- Narr See case narrative
- NC Not confirmed
- < Less than Result value
- J Estimated value detected below Reporting Limit

Analytical Environmental Services, Inc

Date: 11-May-17

Client: Atlanta Environmental Mgmt	Client Sample ID: 0497-042717-DF-024-B
Project Name: DCSD - 0497	Collection Date: 4/27/2017 5:36:00 AM
Lab ID: 1704M38-047	Matrix: Drinking Water

Analyses	Result	Reporting Limit	Qual	Units	BatchID	Dilution Factor	Date Analyzed	Analyst
Trace Elements by ICP/MS E200.8					(E200.2)			
Lead	BRL	1.00		ug/L	242191	1	05/08/2017 22:47	JR

Qualifiers:

- * Value exceeds maximum contaminant level
- BRL Below reporting limit
- H Holding times for preparation or analysis exceeded
- N Analyte not NELAC certified
- B Analyte detected in the associated method blank
- > Greater than Result value

- E Estimated (value above quantitation range)
- S Spike Recovery outside limits due to matrix
- Narr See case narrative
- NC Not confirmed
- < Less than Result value
- J Estimated value detected below Reporting Limit

Analytical Environmental Services, Inc

Date: 11-May-17

Client: Atlanta Environmental Mgmt	Client Sample ID: 0497-042717-DF-025-A
Project Name: DCSD - 0497	Collection Date: 4/27/2017 5:39:00 AM
Lab ID: 1704M38-048	Matrix: Drinking Water

Analyses	Result	Reporting Limit	Qual	Units	BatchID	Dilution Factor	Date Analyzed	Analyst
Trace Elements by ICP/MS E200.8								
				(E200.2)				
Lead	BRL	1.00		ug/L	242191	1	05/08/2017 22:51	JR

Qualifiers:

- * Value exceeds maximum contaminant level
- BRL Below reporting limit
- H Holding times for preparation or analysis exceeded
- N Analyte not NELAC certified
- B Analyte detected in the associated method blank
- > Greater than Result value

- E Estimated (value above quantitation range)
- S Spike Recovery outside limits due to matrix
- Narr See case narrative
- NC Not confirmed
- < Less than Result value
- J Estimated value detected below Reporting Limit

Analytical Environmental Services, Inc

Date: 11-May-17

Client: Atlanta Environmental Mgmt	Client Sample ID: 0497-042717-DF-025-B
Project Name: DCSD - 0497	Collection Date: 4/27/2017 5:40:00 AM
Lab ID: 1704M38-049	Matrix: Drinking Water

Analyses	Result	Reporting Limit	Qual	Units	BatchID	Dilution Factor	Date Analyzed	Analyst
Trace Elements by ICP/MS E200.8					(E200.2)			
Lead	BRL	1.00		ug/L	242191	1	05/08/2017 22:54	JR

Qualifiers:

- * Value exceeds maximum contaminant level
- BRL Below reporting limit
- H Holding times for preparation or analysis exceeded
- N Analyte not NELAC certified
- B Analyte detected in the associated method blank
- > Greater than Result value

- E Estimated (value above quantitation range)
- S Spike Recovery outside limits due to matrix
- Narr See case narrative
- NC Not confirmed
- < Less than Result value
- J Estimated value detected below Reporting Limit

Analytical Environmental Services, Inc

Date: 11-May-17

Client: Atlanta Environmental Mgmt	Client Sample ID: 0497-042717-DF-026-A
Project Name: DCSD - 0497	Collection Date: 4/27/2017 5:41:00 AM
Lab ID: 1704M38-050	Matrix: Drinking Water

Analyses	Result	Reporting Limit	Qual	Units	BatchID	Dilution Factor	Date Analyzed	Analyst
Trace Elements by ICP/MS E200.8					(E200.2)			
Lead	BRL	1.00		ug/L	242191	1	05/08/2017 22:58	JR

Qualifiers:

- * Value exceeds maximum contaminant level
- BRL Below reporting limit
- H Holding times for preparation or analysis exceeded
- N Analyte not NELAC certified
- B Analyte detected in the associated method blank
- > Greater than Result value

- E Estimated (value above quantitation range)
- S Spike Recovery outside limits due to matrix
- Narr See case narrative
- NC Not confirmed
- < Less than Result value
- J Estimated value detected below Reporting Limit

Analytical Environmental Services, Inc

Date: 11-May-17

Client: Atlanta Environmental Mgmt	Client Sample ID: 0497-042717-DF-026-B
Project Name: DCSD - 0497	Collection Date: 4/27/2017 5:42:00 AM
Lab ID: 1704M38-051	Matrix: Drinking Water

Analyses	Result	Reporting Limit	Qual	Units	BatchID	Dilution Factor	Date Analyzed	Analyst
Trace Elements by ICP/MS E200.8								
				(E200.2)				
Lead	BRL	1.00		ug/L	242191	1	05/08/2017 22:12	JR

Qualifiers:

- * Value exceeds maximum contaminant level
- BRL Below reporting limit
- H Holding times for preparation or analysis exceeded
- N Analyte not NELAC certified
- B Analyte detected in the associated method blank
- > Greater than Result value

- E Estimated (value above quantitation range)
- S Spike Recovery outside limits due to matrix
- Narr See case narrative
- NC Not confirmed
- < Less than Result value
- J Estimated value detected below Reporting Limit

Analytical Environmental Services, Inc

Date: 11-May-17

Client: Atlanta Environmental Mgmt	Client Sample ID: 0497-042717-RS-001-A
Project Name: DCSD - 0497	Collection Date: 4/27/2017 5:32:00 AM
Lab ID: 1704M38-052	Matrix: Drinking Water

Analyses	Result	Reporting Limit	Qual	Units	BatchID	Dilution Factor	Date Analyzed	Analyst
Trace Elements by ICP/MS E200.8					(E200.2)			
Lead	5.19	1.00		ug/L	242191	1	05/08/2017 23:01	JR

Qualifiers:

- * Value exceeds maximum contaminant level
- BRL Below reporting limit
- H Holding times for preparation or analysis exceeded
- N Analyte not NELAC certified
- B Analyte detected in the associated method blank
- > Greater than Result value

- E Estimated (value above quantitation range)
- S Spike Recovery outside limits due to matrix
- Narr See case narrative
- NC Not confirmed
- < Less than Result value
- J Estimated value detected below Reporting Limit

Analytical Environmental Services, Inc

Date: 11-May-17

Client: Atlanta Environmental Mgmt	Client Sample ID: 0497-042717-RS-001-B
Project Name: DCSD - 0497	Collection Date: 4/27/2017 5:33:00 AM
Lab ID: 1704M38-053	Matrix: Drinking Water

Analyses	Result	Reporting Limit	Qual	Units	BatchID	Dilution Factor	Date Analyzed	Analyst
Trace Elements by ICP/MS E200.8					(E200.2)			
Lead	BRL	1.00		ug/L	242191	1	05/08/2017 23:05	JR

Qualifiers:

- * Value exceeds maximum contaminant level
- BRL Below reporting limit
- H Holding times for preparation or analysis exceeded
- N Analyte not NELAC certified
- B Analyte detected in the associated method blank
- > Greater than Result value

- E Estimated (value above quantitation range)
- S Spike Recovery outside limits due to matrix
- Narr See case narrative
- NC Not confirmed
- < Less than Result value
- J Estimated value detected below Reporting Limit

Analytical Environmental Services, Inc

Date: 11-May-17

Client: Atlanta Environmental Mgmt	Client Sample ID: 0497-042717-RS-002-A
Project Name: DCSD - 0497	Collection Date: 4/27/2017 5:32:00 AM
Lab ID: 1704M38-054	Matrix: Drinking Water

Analyses	Result	Reporting Limit	Qual	Units	BatchID	Dilution Factor	Date Analyzed	Analyst
Trace Elements by ICP/MS E200.8								
				(E200.2)				
Lead	BRL	1.00		ug/L	242191	1	05/08/2017 23:08	JR

Qualifiers:

- * Value exceeds maximum contaminant level
- BRL Below reporting limit
- H Holding times for preparation or analysis exceeded
- N Analyte not NELAC certified
- B Analyte detected in the associated method blank
- > Greater than Result value

- E Estimated (value above quantitation range)
- S Spike Recovery outside limits due to matrix
- Narr See case narrative
- NC Not confirmed
- < Less than Result value
- J Estimated value detected below Reporting Limit

Analytical Environmental Services, Inc

Date: 11-May-17

Client: Atlanta Environmental Mgmt	Client Sample ID: 0497-042717-RS-002-B
Project Name: DCSD - 0497	Collection Date: 4/27/2017 5:33:00 AM
Lab ID: 1704M38-055	Matrix: Drinking Water

Analyses	Result	Reporting Limit	Qual	Units	BatchID	Dilution Factor	Date Analyzed	Analyst
Trace Elements by ICP/MS E200.8					(E200.2)			
Lead	BRL	1.00		ug/L	242191	1	05/08/2017 23:22	JR

Qualifiers:

- * Value exceeds maximum contaminant level
- BRL Below reporting limit
- H Holding times for preparation or analysis exceeded
- N Analyte not NELAC certified
- B Analyte detected in the associated method blank
- > Greater than Result value

- E Estimated (value above quantitation range)
- S Spike Recovery outside limits due to matrix
- Narr See case narrative
- NC Not confirmed
- < Less than Result value
- J Estimated value detected below Reporting Limit

Analytical Environmental Services, Inc

Date: 11-May-17

Client: Atlanta Environmental Mgmt	Client Sample ID: 0497-042717-RS-003-A
Project Name: DCSD - 0497	Collection Date: 4/27/2017 6:01:00 AM
Lab ID: 1704M38-056	Matrix: Drinking Water

Analyses	Result	Reporting Limit	Qual	Units	BatchID	Dilution Factor	Date Analyzed	Analyst
Trace Elements by ICP/MS E200.8					(E200.2)			
Lead	BRL	1.00		ug/L	242191	1	05/08/2017 23:26	JR

Qualifiers:

- * Value exceeds maximum contaminant level
- BRL Below reporting limit
- H Holding times for preparation or analysis exceeded
- N Analyte not NELAC certified
- B Analyte detected in the associated method blank
- > Greater than Result value

- E Estimated (value above quantitation range)
- S Spike Recovery outside limits due to matrix
- Narr See case narrative
- NC Not confirmed
- < Less than Result value
- J Estimated value detected below Reporting Limit

Analytical Environmental Services, Inc

Date: 11-May-17

Client: Atlanta Environmental Mgmt	Client Sample ID: 0497-042717-RS-003-B
Project Name: DCSD - 0497	Collection Date: 4/27/2017 6:02:00 AM
Lab ID: 1704M38-057	Matrix: Drinking Water

Analyses	Result	Reporting Limit	Qual	Units	BatchID	Dilution Factor	Date Analyzed	Analyst
Trace Elements by ICP/MS E200.8					(E200.2)			
Lead	BRL	1.00		ug/L	242191	1	05/08/2017 23:29	JR

Qualifiers:

- * Value exceeds maximum contaminant level
- BRL Below reporting limit
- H Holding times for preparation or analysis exceeded
- N Analyte not NELAC certified
- B Analyte detected in the associated method blank
- > Greater than Result value

- E Estimated (value above quantitation range)
- S Spike Recovery outside limits due to matrix
- Narr See case narrative
- NC Not confirmed
- < Less than Result value
- J Estimated value detected below Reporting Limit

Analytical Environmental Services, Inc

Date: 11-May-17

Client: Atlanta Environmental Mgmt	Client Sample ID: 0497-042717-RS-004-A
Project Name: DCSD - 0497	Collection Date: 4/27/2017 5:45:00 AM
Lab ID: 1704M38-058	Matrix: Drinking Water

Analyses	Result	Reporting Limit	Qual	Units	BatchID	Dilution Factor	Date Analyzed	Analyst
Trace Elements by ICP/MS E200.8								
				(E200.2)				
Lead	BRL	1.00		ug/L	242191	1	05/08/2017 23:32	JR

Qualifiers:

- * Value exceeds maximum contaminant level
- BRL Below reporting limit
- H Holding times for preparation or analysis exceeded
- N Analyte not NELAC certified
- B Analyte detected in the associated method blank
- > Greater than Result value

- E Estimated (value above quantitation range)
- S Spike Recovery outside limits due to matrix
- Narr See case narrative
- NC Not confirmed
- < Less than Result value
- J Estimated value detected below Reporting Limit

Analytical Environmental Services, Inc

Date: 11-May-17

Client: Atlanta Environmental Mgmt	Client Sample ID: 0497-042717-CS-001-A
Project Name: DCSD - 0497	Collection Date: 4/27/2017 4:56:00 AM
Lab ID: 1704M38-059	Matrix: Drinking Water

Analyses	Result	Reporting Limit	Qual	Units	BatchID	Dilution Factor	Date Analyzed	Analyst
Trace Elements by ICP/MS E200.8								
				(E200.2)				
Lead	BRL	1.00		ug/L	242191	1	05/08/2017 23:36	JR

Qualifiers:

- * Value exceeds maximum contaminant level
- BRL Below reporting limit
- H Holding times for preparation or analysis exceeded
- N Analyte not NELAC certified
- B Analyte detected in the associated method blank
- > Greater than Result value

- E Estimated (value above quantitation range)
- S Spike Recovery outside limits due to matrix
- Narr See case narrative
- NC Not confirmed
- < Less than Result value
- J Estimated value detected below Reporting Limit

Analytical Environmental Services, Inc

Date: 11-May-17

Client: Atlanta Environmental Mgmt	Client Sample ID: 0497-042717-CS-001-B
Project Name: DCSD - 0497	Collection Date: 4/27/2017 4:57:00 AM
Lab ID: 1704M38-060	Matrix: Drinking Water

Analyses	Result	Reporting Limit	Qual	Units	BatchID	Dilution Factor	Date Analyzed	Analyst
Trace Elements by ICP/MS E200.8					(E200.2)			
Lead	BRL	1.00		ug/L	242191	1	05/08/2017 23:39	JR

Qualifiers:

- * Value exceeds maximum contaminant level
- BRL Below reporting limit
- H Holding times for preparation or analysis exceeded
- N Analyte not NELAC certified
- B Analyte detected in the associated method blank
- > Greater than Result value

- E Estimated (value above quantitation range)
- S Spike Recovery outside limits due to matrix
- Narr See case narrative
- NC Not confirmed
- < Less than Result value
- J Estimated value detected below Reporting Limit

Analytical Environmental Services, Inc

Date: 11-May-17

Client: Atlanta Environmental Mgmt	Client Sample ID: 0497-042717-CS-002-A
Project Name: DCSD - 0497	Collection Date: 4/27/2017 5:09:00 AM
Lab ID: 1704M38-061	Matrix: Drinking Water

Analyses	Result	Reporting Limit	Qual	Units	BatchID	Dilution Factor	Date Analyzed	Analyst
Trace Elements by ICP/MS E200.8								
				(E200.2)				
Lead	7.86	1.00		ug/L	242192	1	05/08/2017 23:50	JR

Qualifiers:

- * Value exceeds maximum contaminant level
- BRL Below reporting limit
- H Holding times for preparation or analysis exceeded
- N Analyte not NELAC certified
- B Analyte detected in the associated method blank
- > Greater than Result value

- E Estimated (value above quantitation range)
- S Spike Recovery outside limits due to matrix
- Narr See case narrative
- NC Not confirmed
- < Less than Result value
- J Estimated value detected below Reporting Limit

Analytical Environmental Services, Inc

Date: 11-May-17

Client: Atlanta Environmental Mgmt	Client Sample ID: 0497-042717-CS-002-B
Project Name: DCSD - 0497	Collection Date: 4/27/2017 5:10:00 AM
Lab ID: 1704M38-062	Matrix: Drinking Water

Analyses	Result	Reporting Limit	Qual	Units	BatchID	Dilution Factor	Date Analyzed	Analyst
Trace Elements by ICP/MS E200.8					(E200.2)			
Lead	4.86	1.00		ug/L	242192	1	05/09/2017 00:18	JR

Qualifiers:

- * Value exceeds maximum contaminant level
- BRL Below reporting limit
- H Holding times for preparation or analysis exceeded
- N Analyte not NELAC certified
- B Analyte detected in the associated method blank
- > Greater than Result value

- E Estimated (value above quantitation range)
- S Spike Recovery outside limits due to matrix
- Narr See case narrative
- NC Not confirmed
- < Less than Result value
- J Estimated value detected below Reporting Limit

Analytical Environmental Services, Inc

Date: 11-May-17

Client: Atlanta Environmental Mgmt	Client Sample ID: 0497-042717-CS-003-A
Project Name: DCSD - 0497	Collection Date: 4/27/2017 5:11:00 AM
Lab ID: 1704M38-063	Matrix: Drinking Water

Analyses	Result	Reporting Limit	Qual	Units	BatchID	Dilution Factor	Date Analyzed	Analyst
Trace Elements by ICP/MS E200.8					(E200.2)			
Lead	2.02	1.00		ug/L	242192	1	05/09/2017 00:21	JR

Qualifiers:

- * Value exceeds maximum contaminant level
- BRL Below reporting limit
- H Holding times for preparation or analysis exceeded
- N Analyte not NELAC certified
- B Analyte detected in the associated method blank
- > Greater than Result value

- E Estimated (value above quantitation range)
- S Spike Recovery outside limits due to matrix
- Narr See case narrative
- NC Not confirmed
- < Less than Result value
- J Estimated value detected below Reporting Limit

Analytical Environmental Services, Inc

Date: 11-May-17

Client: Atlanta Environmental Mgmt	Client Sample ID: 0497-042717-CS-003-B
Project Name: DCSD - 0497	Collection Date: 4/27/2017 5:12:00 AM
Lab ID: 1704M38-064	Matrix: Drinking Water

Analyses	Result	Reporting Limit	Qual	Units	BatchID	Dilution Factor	Date Analyzed	Analyst
Trace Elements by ICP/MS E200.8								
				(E200.2)				
Lead	BRL	1.00		ug/L	242192	1	05/09/2017 00:25	JR

Qualifiers:

- * Value exceeds maximum contaminant level
- BRL Below reporting limit
- H Holding times for preparation or analysis exceeded
- N Analyte not NELAC certified
- B Analyte detected in the associated method blank
- > Greater than Result value

- E Estimated (value above quantitation range)
- S Spike Recovery outside limits due to matrix
- Narr See case narrative
- NC Not confirmed
- < Less than Result value
- J Estimated value detected below Reporting Limit

Analytical Environmental Services, Inc

Date: 11-May-17

Client: Atlanta Environmental Mgmt	Client Sample ID: 0497-042717-CS-004-A
Project Name: DCSD - 0497	Collection Date: 4/27/2017 5:13:00 AM
Lab ID: 1704M38-065	Matrix: Drinking Water

Analyses	Result	Reporting Limit	Qual	Units	BatchID	Dilution Factor	Date Analyzed	Analyst
Trace Elements by ICP/MS E200.8					(E200.2)			
Lead	2.24	1.00		ug/L	242192	1	05/09/2017 00:28	JR

Qualifiers:

- * Value exceeds maximum contaminant level
- BRL Below reporting limit
- H Holding times for preparation or analysis exceeded
- N Analyte not NELAC certified
- B Analyte detected in the associated method blank
- > Greater than Result value

- E Estimated (value above quantitation range)
- S Spike Recovery outside limits due to matrix
- Narr See case narrative
- NC Not confirmed
- < Less than Result value
- J Estimated value detected below Reporting Limit

Analytical Environmental Services, Inc

Date: 11-May-17

Client: Atlanta Environmental Mgmt	Client Sample ID: 0497-042717-CS-004-B
Project Name: DCSD - 0497	Collection Date: 4/27/2017 5:14:00 AM
Lab ID: 1704M38-066	Matrix: Drinking Water

Analyses	Result	Reporting Limit	Qual	Units	BatchID	Dilution Factor	Date Analyzed	Analyst
Trace Elements by ICP/MS E200.8					(E200.2)			
Lead	BRL	1.00		ug/L	242192	1	05/09/2017 00:32	JR

Qualifiers:

- * Value exceeds maximum contaminant level
- BRL Below reporting limit
- H Holding times for preparation or analysis exceeded
- N Analyte not NELAC certified
- B Analyte detected in the associated method blank
- > Greater than Result value

- E Estimated (value above quantitation range)
- S Spike Recovery outside limits due to matrix
- Narr See case narrative
- NC Not confirmed
- < Less than Result value
- J Estimated value detected below Reporting Limit

Analytical Environmental Services, Inc

Date: 11-May-17

Client: Atlanta Environmental Mgmt	Client Sample ID: 0497-042717-CS-005-A
Project Name: DCSD - 0497	Collection Date: 4/27/2017 5:15:00 AM
Lab ID: 1704M38-067	Matrix: Drinking Water

Analyses	Result	Reporting Limit	Qual	Units	BatchID	Dilution Factor	Date Analyzed	Analyst
Trace Elements by ICP/MS E200.8					(E200.2)			
Lead	40.5	1.00		ug/L	242192	1	05/09/2017 00:35	JR

Qualifiers:

- * Value exceeds maximum contaminant level
- BRL Below reporting limit
- H Holding times for preparation or analysis exceeded
- N Analyte not NELAC certified
- B Analyte detected in the associated method blank
- > Greater than Result value

- E Estimated (value above quantitation range)
- S Spike Recovery outside limits due to matrix
- Narr See case narrative
- NC Not confirmed
- < Less than Result value
- J Estimated value detected below Reporting Limit

Analytical Environmental Services, Inc

Date: 11-May-17

Client: Atlanta Environmental Mgmt	Client Sample ID: 0497-042717-CS-005-B
Project Name: DCSD - 0497	Collection Date: 4/27/2017 5:16:00 AM
Lab ID: 1704M38-068	Matrix: Drinking Water

Analyses	Result	Reporting Limit	Qual	Units	BatchID	Dilution Factor	Date Analyzed	Analyst
Trace Elements by ICP/MS E200.8					(E200.2)			
Lead	1.38	1.00		ug/L	242192	1	05/09/2017 00:39	JR

Qualifiers:

- * Value exceeds maximum contaminant level
- BRL Below reporting limit
- H Holding times for preparation or analysis exceeded
- N Analyte not NELAC certified
- B Analyte detected in the associated method blank
- > Greater than Result value

- E Estimated (value above quantitation range)
- S Spike Recovery outside limits due to matrix
- Narr See case narrative
- NC Not confirmed
- < Less than Result value
- J Estimated value detected below Reporting Limit

Analytical Environmental Services, Inc

Date: 11-May-17

Client: Atlanta Environmental Mgmt	Client Sample ID: 0497-042717-CS-006-A
Project Name: DCSD - 0497	Collection Date: 4/27/2017 5:17:00 AM
Lab ID: 1704M38-069	Matrix: Drinking Water

Analyses	Result	Reporting Limit	Qual	Units	BatchID	Dilution Factor	Date Analyzed	Analyst
Trace Elements by ICP/MS E200.8					(E200.2)			
Lead	3.81	1.00		ug/L	242192	1	05/09/2017 00:53	JR

Qualifiers:

- * Value exceeds maximum contaminant level
- BRL Below reporting limit
- H Holding times for preparation or analysis exceeded
- N Analyte not NELAC certified
- B Analyte detected in the associated method blank
- > Greater than Result value

- E Estimated (value above quantitation range)
- S Spike Recovery outside limits due to matrix
- Narr See case narrative
- NC Not confirmed
- < Less than Result value
- J Estimated value detected below Reporting Limit

Analytical Environmental Services, Inc

Date: 11-May-17

Client: Atlanta Environmental Mgmt	Client Sample ID: 0497-042717-CS-006-B
Project Name: DCSD - 0497	Collection Date: 4/27/2017 5:18:00 AM
Lab ID: 1704M38-070	Matrix: Drinking Water

Analyses	Result	Reporting Limit	Qual	Units	BatchID	Dilution Factor	Date Analyzed	Analyst
Trace Elements by ICP/MS E200.8					(E200.2)			
Lead	BRL	1.00		ug/L	242192	1	05/09/2017 00:56	JR

Qualifiers:

- * Value exceeds maximum contaminant level
- BRL Below reporting limit
- H Holding times for preparation or analysis exceeded
- N Analyte not NELAC certified
- B Analyte detected in the associated method blank
- > Greater than Result value

- E Estimated (value above quantitation range)
- S Spike Recovery outside limits due to matrix
- Narr See case narrative
- NC Not confirmed
- < Less than Result value
- J Estimated value detected below Reporting Limit

Analytical Environmental Services, Inc

Date: 11-May-17

Client: Atlanta Environmental Mgmt	Client Sample ID: 0497-042717-CS-007-A
Project Name: DCSD - 0497	Collection Date: 4/27/2017 5:19:00 AM
Lab ID: 1704M38-071	Matrix: Drinking Water

Analyses	Result	Reporting Limit	Qual	Units	BatchID	Dilution Factor	Date Analyzed	Analyst
Trace Elements by ICP/MS E200.8					(E200.2)			
Lead	1.31	1.00		ug/L	242192	1	05/09/2017 00:11	JR

Qualifiers:

- * Value exceeds maximum contaminant level
- BRL Below reporting limit
- H Holding times for preparation or analysis exceeded
- N Analyte not NELAC certified
- B Analyte detected in the associated method blank
- > Greater than Result value

- E Estimated (value above quantitation range)
- S Spike Recovery outside limits due to matrix
- Narr See case narrative
- NC Not confirmed
- < Less than Result value
- J Estimated value detected below Reporting Limit

Analytical Environmental Services, Inc

Date: 11-May-17

Client: Atlanta Environmental Mgmt	Client Sample ID: 0497-042717-CS-007-B
Project Name: DCSD - 0497	Collection Date: 4/27/2017 5:20:00 AM
Lab ID: 1704M38-072	Matrix: Drinking Water

Analyses	Result	Reporting Limit	Qual	Units	BatchID	Dilution Factor	Date Analyzed	Analyst
Trace Elements by ICP/MS E200.8					(E200.2)			
Lead	BRL	1.00		ug/L	242192	1	05/09/2017 01:00	JR

Qualifiers:

- * Value exceeds maximum contaminant level
- BRL Below reporting limit
- H Holding times for preparation or analysis exceeded
- N Analyte not NELAC certified
- B Analyte detected in the associated method blank
- > Greater than Result value

- E Estimated (value above quantitation range)
- S Spike Recovery outside limits due to matrix
- Narr See case narrative
- NC Not confirmed
- < Less than Result value
- J Estimated value detected below Reporting Limit

Analytical Environmental Services, Inc

Date: 11-May-17

Client: Atlanta Environmental Mgmt	Client Sample ID: 0497-042717-CS-008-A
Project Name: DCSD - 0497	Collection Date: 4/27/2017 5:21:00 AM
Lab ID: 1704M38-073	Matrix: Drinking Water

Analyses	Result	Reporting Limit	Qual	Units	BatchID	Dilution Factor	Date Analyzed	Analyst
Trace Elements by ICP/MS E200.8					(E200.2)			
Lead	1.74	1.00		ug/L	242192	1	05/09/2017 01:03	JR

Qualifiers:

- * Value exceeds maximum contaminant level
- BRL Below reporting limit
- H Holding times for preparation or analysis exceeded
- N Analyte not NELAC certified
- B Analyte detected in the associated method blank
- > Greater than Result value

- E Estimated (value above quantitation range)
- S Spike Recovery outside limits due to matrix
- Narr See case narrative
- NC Not confirmed
- < Less than Result value
- J Estimated value detected below Reporting Limit

Analytical Environmental Services, Inc

Date: 11-May-17

Client: Atlanta Environmental Mgmt	Client Sample ID: 0497-042717-RS-004-B
Project Name: DCSD - 0497	Collection Date: 4/27/2017 5:46:00 AM
Lab ID: 1704M38-074	Matrix: Drinking Water

Analyses	Result	Reporting Limit	Qual	Units	BatchID	Dilution Factor	Date Analyzed	Analyst
Trace Elements by ICP/MS E200.8					(E200.2)			
Lead	BRL	1.00		ug/L	242192	1	05/09/2017 01:07	JR

Qualifiers:

- * Value exceeds maximum contaminant level
- BRL Below reporting limit
- H Holding times for preparation or analysis exceeded
- N Analyte not NELAC certified
- B Analyte detected in the associated method blank
- > Greater than Result value

- E Estimated (value above quantitation range)
- S Spike Recovery outside limits due to matrix
- Narr See case narrative
- NC Not confirmed
- < Less than Result value
- J Estimated value detected below Reporting Limit

Analytical Environmental Services, Inc

Date: 11-May-17

Client: Atlanta Environmental Mgmt	Client Sample ID: 0497-042717-TL-001-A
Project Name: DCSD - 0497	Collection Date: 4/27/2017 5:14:00 AM
Lab ID: 1704M38-075	Matrix: Drinking Water

Analyses	Result	Reporting Limit	Qual	Units	BatchID	Dilution Factor	Date Analyzed	Analyst
Trace Elements by ICP/MS E200.8					(E200.2)			
Lead	6.22	1.00		ug/L	242192	1	05/09/2017 01:10	JR

Qualifiers:

- * Value exceeds maximum contaminant level
- BRL Below reporting limit
- H Holding times for preparation or analysis exceeded
- N Analyte not NELAC certified
- B Analyte detected in the associated method blank
- > Greater than Result value

- E Estimated (value above quantitation range)
- S Spike Recovery outside limits due to matrix
- Narr See case narrative
- NC Not confirmed
- < Less than Result value
- J Estimated value detected below Reporting Limit

Analytical Environmental Services, Inc

Date: 11-May-17

Client: Atlanta Environmental Mgmt	Client Sample ID: 0497-042717-TL-001-B
Project Name: DCSD - 0497	Collection Date: 4/27/2017 5:15:00 PM
Lab ID: 1704M38-076	Matrix: Drinking Water

Analyses	Result	Reporting Limit	Qual	Units	BatchID	Dilution Factor	Date Analyzed	Analyst
Trace Elements by ICP/MS E200.8								
				(E200.2)				
Lead	BRL	1.00		ug/L	242192	1	05/09/2017 01:14	JR

Qualifiers:

- * Value exceeds maximum contaminant level
- BRL Below reporting limit
- H Holding times for preparation or analysis exceeded
- N Analyte not NELAC certified
- B Analyte detected in the associated method blank
- > Greater than Result value

- E Estimated (value above quantitation range)
- S Spike Recovery outside limits due to matrix
- Narr See case narrative
- NC Not confirmed
- < Less than Result value
- J Estimated value detected below Reporting Limit

Analytical Environmental Services, Inc

Date: 11-May-17

Client: Atlanta Environmental Mgmt	Client Sample ID: 0497-042717-TL-002-A
Project Name: DCSD - 0497	Collection Date: 4/27/2017 5:15:00 AM
Lab ID: 1704M38-077	Matrix: Drinking Water

Analyses	Result	Reporting Limit	Qual	Units	BatchID	Dilution Factor	Date Analyzed	Analyst
Trace Elements by ICP/MS E200.8					(E200.2)			
Lead	BRL	1.00		ug/L	242192	1	05/09/2017 01:17	JR

Qualifiers:

- * Value exceeds maximum contaminant level
- BRL Below reporting limit
- H Holding times for preparation or analysis exceeded
- N Analyte not NELAC certified
- B Analyte detected in the associated method blank
- > Greater than Result value

- E Estimated (value above quantitation range)
- S Spike Recovery outside limits due to matrix
- Narr See case narrative
- NC Not confirmed
- < Less than Result value
- J Estimated value detected below Reporting Limit

Analytical Environmental Services, Inc

Date: 11-May-17

Client: Atlanta Environmental Mgmt	Client Sample ID: 0497-042717-TL-002-B
Project Name: DCSD - 0497	Collection Date: 4/27/2017 5:16:00 AM
Lab ID: 1704M38-078	Matrix: Drinking Water

Analyses	Result	Reporting Limit	Qual	Units	BatchID	Dilution Factor	Date Analyzed	Analyst
Trace Elements by ICP/MS E200.8								
				(E200.2)				
Lead	BRL	1.00		ug/L	242192	1	05/09/2017 01:21	JR

Qualifiers:

- * Value exceeds maximum contaminant level
- BRL Below reporting limit
- H Holding times for preparation or analysis exceeded
- N Analyte not NELAC certified
- B Analyte detected in the associated method blank
- > Greater than Result value

- E Estimated (value above quantitation range)
- S Spike Recovery outside limits due to matrix
- Narr See case narrative
- NC Not confirmed
- < Less than Result value
- J Estimated value detected below Reporting Limit

Analytical Environmental Services, Inc

Date: 11-May-17

Client: Atlanta Environmental Mgmt	Client Sample ID: 0497-042717-TL-003-A
Project Name: DCSD - 0497	Collection Date: 4/27/2017 5:27:00 AM
Lab ID: 1704M38-079	Matrix: Drinking Water

Analyses	Result	Reporting Limit	Qual	Units	BatchID	Dilution Factor	Date Analyzed	Analyst
Trace Elements by ICP/MS E200.8					(E200.2)			
Lead	BRL	1.00		ug/L	242192	1	05/09/2017 01:24	JR

Qualifiers:

- * Value exceeds maximum contaminant level
- BRL Below reporting limit
- H Holding times for preparation or analysis exceeded
- N Analyte not NELAC certified
- B Analyte detected in the associated method blank
- > Greater than Result value

- E Estimated (value above quantitation range)
- S Spike Recovery outside limits due to matrix
- Narr See case narrative
- NC Not confirmed
- < Less than Result value
- J Estimated value detected below Reporting Limit

Analytical Environmental Services, Inc

Date: 11-May-17

Client: Atlanta Environmental Mgmt	Client Sample ID: 0497-042717-TL-003-B
Project Name: DCSD - 0497	Collection Date: 4/27/2017 5:29:00 AM
Lab ID: 1704M38-080	Matrix: Drinking Water

Analyses	Result	Reporting Limit	Qual	Units	BatchID	Dilution Factor	Date Analyzed	Analyst
Trace Elements by ICP/MS E200.8					(E200.2)			
Lead	BRL	1.00		ug/L	242192	1	05/09/2017 01:38	JR

Qualifiers:

- * Value exceeds maximum contaminant level
- BRL Below reporting limit
- H Holding times for preparation or analysis exceeded
- N Analyte not NELAC certified
- B Analyte detected in the associated method blank
- > Greater than Result value

- E Estimated (value above quantitation range)
- S Spike Recovery outside limits due to matrix
- Narr See case narrative
- NC Not confirmed
- < Less than Result value
- J Estimated value detected below Reporting Limit

Analytical Environmental Services, Inc

Date: 11-May-17

Client: Atlanta Environmental Mgmt	Client Sample ID: 0497-042717-TL-003-C
Project Name: DCSD - 0497	Collection Date: 4/27/2017 5:28:00 AM
Lab ID: 1704M38-081	Matrix: Drinking Water

Analyses	Result	Reporting Limit	Qual	Units	BatchID	Dilution Factor	Date Analyzed	Analyst
Trace Elements by ICP/MS E200.8					(E200.2)			
Lead	BRL	1.00		ug/L	242096	1	05/04/2017 15:51	JR

Qualifiers:

- * Value exceeds maximum contaminant level
- BRL Below reporting limit
- H Holding times for preparation or analysis exceeded
- N Analyte not NELAC certified
- B Analyte detected in the associated method blank
- > Greater than Result value

- E Estimated (value above quantitation range)
- S Spike Recovery outside limits due to matrix
- Narr See case narrative
- NC Not confirmed
- < Less than Result value
- J Estimated value detected below Reporting Limit

Analytical Environmental Services, Inc

Date: 11-May-17

Client: Atlanta Environmental Mgmt	Client Sample ID: 0497-042717-IM-002-A
Project Name: DCSD - 0497	Collection Date: 4/27/2017 4:59:00 AM
Lab ID: 1704M38-082	Matrix: Drinking Water

Analyses	Result	Reporting Limit	Qual	Units	BatchID	Dilution Factor	Date Analyzed	Analyst
Trace Elements by ICP/MS E200.8					(E200.2)			
Lead	BRL	1.00		ug/L	242083	1	05/04/2017 19:21	JR

Qualifiers:

- * Value exceeds maximum contaminant level
- BRL Below reporting limit
- H Holding times for preparation or analysis exceeded
- N Analyte not NELAC certified
- B Analyte detected in the associated method blank
- > Greater than Result value

- E Estimated (value above quantitation range)
- S Spike Recovery outside limits due to matrix
- Narr See case narrative
- NC Not confirmed
- < Less than Result value
- J Estimated value detected below Reporting Limit

Analytical Environmental Services, Inc

Date: 11-May-17

Client: Atlanta Environmental Mgmt	Client Sample ID: 0497-042717-OT-001-A
Project Name: DCSD - 0497	Collection Date: 4/27/2017 5:10:00 AM
Lab ID: 1704M38-083	Matrix: Drinking Water

Analyses	Result	Reporting Limit	Qual	Units	BatchID	Dilution Factor	Date Analyzed	Analyst
Trace Elements by ICP/MS E200.8								
				(E200.2)				
Lead	BRL	1.00		ug/L	242096	1	05/04/2017 17:14	JR

Qualifiers:

- * Value exceeds maximum contaminant level
- BRL Below reporting limit
- H Holding times for preparation or analysis exceeded
- N Analyte not NELAC certified
- B Analyte detected in the associated method blank
- > Greater than Result value

- E Estimated (value above quantitation range)
- S Spike Recovery outside limits due to matrix
- Narr See case narrative
- NC Not confirmed
- < Less than Result value
- J Estimated value detected below Reporting Limit

Analytical Environmental Services, Inc

Date: 11-May-17

Client: Atlanta Environmental Mgmt	Client Sample ID: 0497-042717-OT-001-B
Project Name: DCSD - 0497	Collection Date: 4/27/2017 5:11:00 AM
Lab ID: 1704M38-084	Matrix: Drinking Water

Analyses	Result	Reporting Limit	Qual	Units	BatchID	Dilution Factor	Date Analyzed	Analyst
Trace Elements by ICP/MS E200.8					(E200.2)			
Lead	BRL	1.00		ug/L	242096	1	05/04/2017 17:20	JR

Qualifiers:

- * Value exceeds maximum contaminant level
- BRL Below reporting limit
- H Holding times for preparation or analysis exceeded
- N Analyte not NELAC certified
- B Analyte detected in the associated method blank
- > Greater than Result value

- E Estimated (value above quantitation range)
- S Spike Recovery outside limits due to matrix
- Narr See case narrative
- NC Not confirmed
- < Less than Result value
- J Estimated value detected below Reporting Limit

Analytical Environmental Services, Inc

Date: 11-May-17

Client: Atlanta Environmental Mgmt	Client Sample ID: 0497-042717-AF-001-A
Project Name: DCSD - 0497	Collection Date: 4/27/2017 5:50:00 AM
Lab ID: 1704M38-085	Matrix: Drinking Water

Analyses	Result	Reporting Limit	Qual	Units	BatchID	Dilution Factor	Date Analyzed	Analyst
Trace Elements by ICP/MS E200.8								
				(E200.2)				
Lead	BRL	1.00		ug/L	242096	1	05/04/2017 17:26	JR

Qualifiers:

- * Value exceeds maximum contaminant level
- BRL Below reporting limit
- H Holding times for preparation or analysis exceeded
- N Analyte not NELAC certified
- B Analyte detected in the associated method blank
- > Greater than Result value

- E Estimated (value above quantitation range)
- S Spike Recovery outside limits due to matrix
- Narr See case narrative
- NC Not confirmed
- < Less than Result value
- J Estimated value detected below Reporting Limit

Analytical Environmental Services, Inc

Date: 11-May-17

Client: Atlanta Environmental Mgmt	Client Sample ID: 0497-042717-AF-001-B
Project Name: DCSD - 0497	Collection Date: 4/27/2017 5:51:00 AM
Lab ID: 1704M38-086	Matrix: Drinking Water

Analyses	Result	Reporting Limit	Qual	Units	BatchID	Dilution Factor	Date Analyzed	Analyst
Trace Elements by ICP/MS E200.8								
				(E200.2)				
Lead	BRL	1.00		ug/L	242096	1	05/04/2017 19:40	JR

Qualifiers:

- * Value exceeds maximum contaminant level
- BRL Below reporting limit
- H Holding times for preparation or analysis exceeded
- N Analyte not NELAC certified
- B Analyte detected in the associated method blank
- > Greater than Result value

- E Estimated (value above quantitation range)
- S Spike Recovery outside limits due to matrix
- Narr See case narrative
- NC Not confirmed
- < Less than Result value
- J Estimated value detected below Reporting Limit

Analytical Environmental Services, Inc

Date: 11-May-17

Client: Atlanta Environmental Mgmt	Client Sample ID: 0497-042717-CS-008-B
Project Name: DCSD - 0497	Collection Date: 4/27/2017 5:22:00 AM
Lab ID: 1704M38-087	Matrix: Drinking Water

Analyses	Result	Reporting Limit	Qual	Units	BatchID	Dilution Factor	Date Analyzed	Analyst
Trace Elements by ICP/MS E200.8					(E200.2)			
Lead	1.12	1.00		ug/L	242083	1	05/04/2017 19:02	JR

Qualifiers:

- * Value exceeds maximum contaminant level
- BRL Below reporting limit
- H Holding times for preparation or analysis exceeded
- N Analyte not NELAC certified
- B Analyte detected in the associated method blank
- > Greater than Result value

- E Estimated (value above quantitation range)
- S Spike Recovery outside limits due to matrix
- Narr See case narrative
- NC Not confirmed
- < Less than Result value
- J Estimated value detected below Reporting Limit

Analytical Environmental Services, Inc

Date: 11-May-17

Client: Atlanta Environmental Mgmt	Client Sample ID: 0497-042717-SC-001-A
Project Name: DCSD - 0497	Collection Date: 4/27/2017 4:50:00 AM
Lab ID: 1704M38-088	Matrix: Drinking Water

Analyses	Result	Reporting Limit	Qual	Units	BatchID	Dilution Factor	Date Analyzed	Analyst
Trace Elements by ICP/MS E200.8					(E200.2)			
Lead	BRL	1.00		ug/L	242096	1	05/04/2017 19:46	JR

Qualifiers:

- * Value exceeds maximum contaminant level
- BRL Below reporting limit
- H Holding times for preparation or analysis exceeded
- N Analyte not NELAC certified
- B Analyte detected in the associated method blank
- > Greater than Result value

- E Estimated (value above quantitation range)
- S Spike Recovery outside limits due to matrix
- Narr See case narrative
- NC Not confirmed
- < Less than Result value
- J Estimated value detected below Reporting Limit

SAMPLE/COOLER RECEIPT CHECKLIST

1. Client Name: _____

AES Work Order Number: _____

2. Carrier: FedEx UPS USPS Client Courier Other _____

	Yes	No	N/A	Details	Comments
3. Shipping container/cooler received in good condition?				damaged <input type="checkbox"/> leaking <input type="checkbox"/> other <input type="checkbox"/>	
4. Custody seals present on shipping container?					
5. Custody seals intact on shipping container?					
6. Temperature blanks present?					
7. Cooler temperature(s) within limits of 0-6°C? [See item 13 and 14 for temperature recordings.]				Cooling initiated for recently collected samples / ice present <input type="checkbox"/>	
8. Chain of Custody (COC) present?					
9. Chain of Custody signed, dated, and timed when relinquished and received?					
10. Sampler name and/or signature on COC?					
11. Were all samples received within holding time?					
12. TAT marked on the COC?				If no TAT indicated, proceeded with standard TAT per Terms & Conditions. <input type="checkbox"/>	

13. Cooler 1 Temperature _____ °C Cooler 2 Temperature _____ °C Cooler 3 Temperature _____ °C Cooler 4 Temperature _____ °C
 Cooler 5 Temperature _____ °C Cooler 6 Temperature _____ °C Cooler 7 Temperature _____ °C Cooler 8 Temperature _____ °C

15. Comments: _____

I certify that I have completed sections 1-15 (dated initials). _____

	Yes	No	N/A	Details	Comments
16. Were sample containers intact upon receipt?					
17. Custody seals present on sample containers?					
18. Custody seals intact on sample containers?					
19. Do sample container labels match the COC?				incomplete info <input type="checkbox"/> illegible <input type="checkbox"/> no label <input type="checkbox"/> other <input type="checkbox"/>	
20. Are analyses requested indicated on the COC?					
21. Were all of the samples listed on the COC received?				samples received but not listed on COC <input type="checkbox"/> samples listed on COC not received <input type="checkbox"/>	
22. Was the sample collection date/time noted?					
23. Did we receive sufficient sample volume for indicated analyses?					
24. Were samples received in appropriate containers?					
25. Were VOA samples received without headspace (< 1/4" bubble)?					
26. Were trip blanks submitted?				listed on COC <input type="checkbox"/> not listed on COC <input type="checkbox"/>	

27. Comments: _____

I certify that I have completed sections 16-27 (dated initials). _____

	Yes	No	N/A	Details	Comments
28. Have containers needing chemical preservation been checked?					
29. Containers meet preservation guidelines?					
30. Was pH adjusted?					

I certify that I have completed sections 28-30 (dated initials). _____

Client: Atlanta Environmental Mgmt
 Project Name: DCSD - 0497
 Workorder: 1704M38

ANALYTICAL QC SUMMARY REPORT

BatchID: 242083

Sample ID: MB-242083	Client ID:	Units: ug/L	Prep Date: 05/04/2017	Run No: 342311							
SampleType: MBLK	TestCode: Trace Elements by ICP/MS E200.8	BatchID: 242083	Analysis Date: 05/04/2017	Seq No: 7499343							
Analyte	Result	RPT Limit	SPK value	SPK Ref Val	%REC	Low Limit	High Limit	RPD Ref Val	%RPD	RPD Limit	Qual

Lead BRL 1.00

Sample ID: LCS-242083	Client ID:	Units: ug/L	Prep Date: 05/04/2017	Run No: 342311							
SampleType: LCS	TestCode: Trace Elements by ICP/MS E200.8	BatchID: 242083	Analysis Date: 05/04/2017	Seq No: 7499344							
Analyte	Result	RPT Limit	SPK value	SPK Ref Val	%REC	Low Limit	High Limit	RPD Ref Val	%RPD	RPD Limit	Qual

Lead 102.8 1.00 100.0 103 85 115

Sample ID: 1704M38-087AMS	Client ID: 0497-042717-CS-008-B	Units: ug/L	Prep Date: 05/04/2017	Run No: 342311							
SampleType: MS	TestCode: Trace Elements by ICP/MS E200.8	BatchID: 242083	Analysis Date: 05/04/2017	Seq No: 7499346							
Analyte	Result	RPT Limit	SPK value	SPK Ref Val	%REC	Low Limit	High Limit	RPD Ref Val	%RPD	RPD Limit	Qual

Lead 102.4 1.00 100.0 1.121 101 70 130

Sample ID: 1704M38-087AMSD	Client ID: 0497-042717-CS-008-B	Units: ug/L	Prep Date: 05/04/2017	Run No: 342311							
SampleType: MSD	TestCode: Trace Elements by ICP/MS E200.8	BatchID: 242083	Analysis Date: 05/04/2017	Seq No: 7499347							
Analyte	Result	RPT Limit	SPK value	SPK Ref Val	%REC	Low Limit	High Limit	RPD Ref Val	%RPD	RPD Limit	Qual

Lead 103.0 1.00 100.0 1.121 102 70 130 102.4 0.576 20

Qualifiers:	> Greater than Result value	< Less than Result value	B Analyte detected in the associated method blank
	BRL Below reporting limit	E Estimated (value above quantitation range)	H Holding times for preparation or analysis exceeded
	J Estimated value detected below Reporting Limit	N Analyte not NELAC certified	R RPD outside limits due to matrix
	Rpt Lim Reporting Limit	S Spike Recovery outside limits due to matrix	

Client: Atlanta Environmental Mgmt
 Project Name: DCSD - 0497
 Workorder: 1704M38

ANALYTICAL QC SUMMARY REPORT

BatchID: 242096

Sample ID: MB-242096	Client ID:	Units: ug/L	Prep Date: 05/04/2017	Run No: 342306							
SampleType: MBLK	TestCode: Trace Elements by ICP/MS E200.8	BatchID: 242096	Analysis Date: 05/04/2017	Seq No: 7499281							
Analyte	Result	RPT Limit	SPK value	SPK Ref Val	%REC	Low Limit	High Limit	RPD Ref Val	%RPD	RPD Limit	Qual

Lead BRL 1.00

Sample ID: LCS-242096	Client ID:	Units: ug/L	Prep Date: 05/04/2017	Run No: 342306							
SampleType: LCS	TestCode: Trace Elements by ICP/MS E200.8	BatchID: 242096	Analysis Date: 05/04/2017	Seq No: 7499282							
Analyte	Result	RPT Limit	SPK value	SPK Ref Val	%REC	Low Limit	High Limit	RPD Ref Val	%RPD	RPD Limit	Qual

Lead 96.34 1.00 100.0 96.3 85 115

Sample ID: 1704M38-081AMS	Client ID: 0497-042717-TL-003-C	Units: ug/L	Prep Date: 05/04/2017	Run No: 342306							
SampleType: MS	TestCode: Trace Elements by ICP/MS E200.8	BatchID: 242096	Analysis Date: 05/04/2017	Seq No: 7499284							
Analyte	Result	RPT Limit	SPK value	SPK Ref Val	%REC	Low Limit	High Limit	RPD Ref Val	%RPD	RPD Limit	Qual

Lead 96.44 1.00 100.0 96.4 70 130

Sample ID: 1704N94-003AMS	Client ID:	Units: ug/L	Prep Date: 05/04/2017	Run No: 342306							
SampleType: MS	TestCode: Trace Elements by ICP/MS E200.8	BatchID: 242096	Analysis Date: 05/04/2017	Seq No: 7499287							
Analyte	Result	RPT Limit	SPK value	SPK Ref Val	%REC	Low Limit	High Limit	RPD Ref Val	%RPD	RPD Limit	Qual

Lead 122.2 1.00 100.0 21.70 100 70 130

Sample ID: 1704M38-081AMSD	Client ID: 0497-042717-TL-003-C	Units: ug/L	Prep Date: 05/04/2017	Run No: 342306							
SampleType: MSD	TestCode: Trace Elements by ICP/MS E200.8	BatchID: 242096	Analysis Date: 05/04/2017	Seq No: 7499285							
Analyte	Result	RPT Limit	SPK value	SPK Ref Val	%REC	Low Limit	High Limit	RPD Ref Val	%RPD	RPD Limit	Qual

Lead 100.5 1.00 100.0 101 70 130 96.44 4.17 20

Qualifiers: > Greater than Result value < Less than Result value B Analyte detected in the associated method blank
 BRL Below reporting limit E Estimated (value above quantitation range) H Holding times for preparation or analysis exceeded
 J Estimated value detected below Reporting Limit N Analyte not NELAC certified R RPD outside limits due to matrix
 Rpt Lim Reporting Limit S Spike Recovery outside limits due to matrix

Client: Atlanta Environmental Mgmt
Project Name: DCSD - 0497
Workorder: 1704M38

ANALYTICAL QC SUMMARY REPORT

BatchID: 242189

Sample ID: MB-242189	Client ID:	Units: ug/L	Prep Date: 05/08/2017	Run No: 342550							
SampleType: MBLK	TestCode: Trace Elements by ICP/MS E200.8	BatchID: 242189	Analysis Date: 05/08/2017	Seq No: 7505611							
Analyte	Result	RPT Limit	SPK value	SPK Ref Val	%REC	Low Limit	High Limit	RPD Ref Val	%RPD	RPD Limit	Qual

Lead BRL 1.00

Sample ID: LCS-242189	Client ID:	Units: ug/L	Prep Date: 05/08/2017	Run No: 342550							
SampleType: LCS	TestCode: Trace Elements by ICP/MS E200.8	BatchID: 242189	Analysis Date: 05/08/2017	Seq No: 7505612							
Analyte	Result	RPT Limit	SPK value	SPK Ref Val	%REC	Low Limit	High Limit	RPD Ref Val	%RPD	RPD Limit	Qual

Lead 95.34 1.00 100.0 95.3 85 115

Sample ID: 1704M38-001AMS	Client ID: 0497-042717-DF-002-A	Units: ug/L	Prep Date: 05/08/2017	Run No: 342550							
SampleType: MS	TestCode: Trace Elements by ICP/MS E200.8	BatchID: 242189	Analysis Date: 05/08/2017	Seq No: 7505614							
Analyte	Result	RPT Limit	SPK value	SPK Ref Val	%REC	Low Limit	High Limit	RPD Ref Val	%RPD	RPD Limit	Qual

Lead 97.70 1.00 100.0 1.249 96.4 70 130

Sample ID: 1704M38-011AMS	Client ID: 0497-042717-DF-006-C	Units: ug/L	Prep Date: 05/08/2017	Run No: 342550							
SampleType: MS	TestCode: Trace Elements by ICP/MS E200.8	BatchID: 242189	Analysis Date: 05/08/2017	Seq No: 7505617							
Analyte	Result	RPT Limit	SPK value	SPK Ref Val	%REC	Low Limit	High Limit	RPD Ref Val	%RPD	RPD Limit	Qual

Lead 97.24 1.00 100.0 1.000 96.2 70 130

Sample ID: 1704M38-001AMSD	Client ID: 0497-042717-DF-002-A	Units: ug/L	Prep Date: 05/08/2017	Run No: 342550							
SampleType: MSD	TestCode: Trace Elements by ICP/MS E200.8	BatchID: 242189	Analysis Date: 05/08/2017	Seq No: 7505615							
Analyte	Result	RPT Limit	SPK value	SPK Ref Val	%REC	Low Limit	High Limit	RPD Ref Val	%RPD	RPD Limit	Qual

Lead 100.6 1.00 100.0 1.249 99.3 70 130 97.70 2.89 20

Qualifiers: > Greater than Result value < Less than Result value B Analyte detected in the associated method blank
 BRL Below reporting limit E Estimated (value above quantitation range) H Holding times for preparation or analysis exceeded
 J Estimated value detected below Reporting Limit N Analyte not NELAC certified R RPD outside limits due to matrix
 Rpt Lim Reporting Limit S Spike Recovery outside limits due to matrix

Client: Atlanta Environmental Mgmt
Project Name: DCSD - 0497
Workorder: 1704M38

ANALYTICAL QC SUMMARY REPORT

BatchID: 242190

Sample ID: MB-242190	Client ID:	Units: ug/L	Prep Date: 05/08/2017	Run No: 342551							
SampleType: MBLK	TestCode: Trace Elements by ICP/MS E200.8	BatchID: 242190	Analysis Date: 05/08/2017	Seq No: 7505657							
Analyte	Result	RPT Limit	SPK value	SPK Ref Val	%REC	Low Limit	High Limit	RPD Ref Val	%RPD	RPD Limit	Qual

Lead BRL 1.00

Sample ID: LCS-242190	Client ID:	Units: ug/L	Prep Date: 05/08/2017	Run No: 342551							
SampleType: LCS	TestCode: Trace Elements by ICP/MS E200.8	BatchID: 242190	Analysis Date: 05/08/2017	Seq No: 7505658							
Analyte	Result	RPT Limit	SPK value	SPK Ref Val	%REC	Low Limit	High Limit	RPD Ref Val	%RPD	RPD Limit	Qual

Lead 95.64 1.00 100.0 95.6 85 115

Sample ID: 1704M38-021AMS	Client ID: 0497-042717-DF-011-B	Units: ug/L	Prep Date: 05/08/2017	Run No: 342551							
SampleType: MS	TestCode: Trace Elements by ICP/MS E200.8	BatchID: 242190	Analysis Date: 05/08/2017	Seq No: 7505662							
Analyte	Result	RPT Limit	SPK value	SPK Ref Val	%REC	Low Limit	High Limit	RPD Ref Val	%RPD	RPD Limit	Qual

Lead 94.41 1.00 100.0 94.4 70 130

Sample ID: 1704M38-031AMS	Client ID: 0497-042717-DF-016-B	Units: ug/L	Prep Date: 05/08/2017	Run No: 342551							
SampleType: MS	TestCode: Trace Elements by ICP/MS E200.8	BatchID: 242190	Analysis Date: 05/08/2017	Seq No: 7505672							
Analyte	Result	RPT Limit	SPK value	SPK Ref Val	%REC	Low Limit	High Limit	RPD Ref Val	%RPD	RPD Limit	Qual

Lead 93.16 1.00 100.0 93.2 70 130

Sample ID: 1704M38-021AMSD	Client ID: 0497-042717-DF-011-B	Units: ug/L	Prep Date: 05/08/2017	Run No: 342551							
SampleType: MSD	TestCode: Trace Elements by ICP/MS E200.8	BatchID: 242190	Analysis Date: 05/08/2017	Seq No: 7505669							
Analyte	Result	RPT Limit	SPK value	SPK Ref Val	%REC	Low Limit	High Limit	RPD Ref Val	%RPD	RPD Limit	Qual

Lead 95.20 1.00 100.0 95.2 70 130 94.41 0.837 20

Qualifiers:	> Greater than Result value	< Less than Result value	B Analyte detected in the associated method blank
	BRL Below reporting limit	E Estimated (value above quantitation range)	H Holding times for preparation or analysis exceeded
	J Estimated value detected below Reporting Limit	N Analyte not NELAC certified	R RPD outside limits due to matrix
	Rpt Lim Reporting Limit	S Spike Recovery outside limits due to matrix	

Client: Atlanta Environmental Mgmt
Project Name: DCSD - 0497
Workorder: 1704M38

ANALYTICAL QC SUMMARY REPORT

BatchID: 242191

Sample ID: MB-242191	Client ID:	Units: ug/L	Prep Date: 05/08/2017	Run No: 342552							
SampleType: MBLK	TestCode: Trace Elements by ICP/MS E200.8	BatchID: 242191	Analysis Date: 05/08/2017	Seq No: 7505707							
Analyte	Result	RPT Limit	SPK value	SPK Ref Val	%REC	Low Limit	High Limit	RPD Ref Val	%RPD	RPD Limit	Qual

Lead BRL 1.00

Sample ID: LCS-242191	Client ID:	Units: ug/L	Prep Date: 05/08/2017	Run No: 342552							
SampleType: LCS	TestCode: Trace Elements by ICP/MS E200.8	BatchID: 242191	Analysis Date: 05/08/2017	Seq No: 7505708							
Analyte	Result	RPT Limit	SPK value	SPK Ref Val	%REC	Low Limit	High Limit	RPD Ref Val	%RPD	RPD Limit	Qual

Lead 98.18 1.00 100.0 98.2 85 115

Sample ID: 1704M38-041AMS	Client ID: 0497-042717-DF-021-B	Units: ug/L	Prep Date: 05/08/2017	Run No: 342552							
SampleType: MS	TestCode: Trace Elements by ICP/MS E200.8	BatchID: 242191	Analysis Date: 05/08/2017	Seq No: 7505710							
Analyte	Result	RPT Limit	SPK value	SPK Ref Val	%REC	Low Limit	High Limit	RPD Ref Val	%RPD	RPD Limit	Qual

Lead 94.81 1.00 100.0 94.8 70 130

Sample ID: 1704M38-051AMS	Client ID: 0497-042717-DF-026-B	Units: ug/L	Prep Date: 05/08/2017	Run No: 342552							
SampleType: MS	TestCode: Trace Elements by ICP/MS E200.8	BatchID: 242191	Analysis Date: 05/08/2017	Seq No: 7505713							
Analyte	Result	RPT Limit	SPK value	SPK Ref Val	%REC	Low Limit	High Limit	RPD Ref Val	%RPD	RPD Limit	Qual

Lead 93.66 1.00 100.0 93.7 70 130

Sample ID: 1704M38-041AMSD	Client ID: 0497-042717-DF-021-B	Units: ug/L	Prep Date: 05/08/2017	Run No: 342552							
SampleType: MSD	TestCode: Trace Elements by ICP/MS E200.8	BatchID: 242191	Analysis Date: 05/08/2017	Seq No: 7505711							
Analyte	Result	RPT Limit	SPK value	SPK Ref Val	%REC	Low Limit	High Limit	RPD Ref Val	%RPD	RPD Limit	Qual

Lead 94.38 1.00 100.0 94.4 70 130 94.81 0.453 20

Qualifiers:	> Greater than Result value	< Less than Result value	B Analyte detected in the associated method blank
	BRL Below reporting limit	E Estimated (value above quantitation range)	H Holding times for preparation or analysis exceeded
	J Estimated value detected below Reporting Limit	N Analyte not NELAC certified	R RPD outside limits due to matrix
	Rpt Lim Reporting Limit	S Spike Recovery outside limits due to matrix	

Client: Atlanta Environmental Mgmt
Project Name: DCSD - 0497
Workorder: 1704M38

ANALYTICAL QC SUMMARY REPORT

BatchID: 242192

Sample ID: MB-242192	Client ID:	Units: ug/L	Prep Date: 05/08/2017	Run No: 342553							
SampleType: MBLK	TestCode: Trace Elements by ICP/MS E200.8	BatchID: 242192	Analysis Date: 05/08/2017	Seq No: 7505756							
Analyte	Result	RPT Limit	SPK value	SPK Ref Val	%REC	Low Limit	High Limit	RPD Ref Val	%RPD	RPD Limit	Qual

Lead BRL 1.00

Sample ID: LCS-242192	Client ID:	Units: ug/L	Prep Date: 05/08/2017	Run No: 342553							
SampleType: LCS	TestCode: Trace Elements by ICP/MS E200.8	BatchID: 242192	Analysis Date: 05/08/2017	Seq No: 7505757							
Analyte	Result	RPT Limit	SPK value	SPK Ref Val	%REC	Low Limit	High Limit	RPD Ref Val	%RPD	RPD Limit	Qual

Lead 95.73 1.00 100.0 95.7 85 115

Sample ID: 1704M38-061AMS	Client ID: 0497-042717-CS-002-A	Units: ug/L	Prep Date: 05/08/2017	Run No: 342553							
SampleType: MS	TestCode: Trace Elements by ICP/MS E200.8	BatchID: 242192	Analysis Date: 05/08/2017	Seq No: 7505760							
Analyte	Result	RPT Limit	SPK value	SPK Ref Val	%REC	Low Limit	High Limit	RPD Ref Val	%RPD	RPD Limit	Qual

Lead 102.1 1.00 100.0 7.863 94.2 70 130

Sample ID: 1704M38-071AMS	Client ID: 0497-042717-CS-007-A	Units: ug/L	Prep Date: 05/08/2017	Run No: 342553							
SampleType: MS	TestCode: Trace Elements by ICP/MS E200.8	BatchID: 242192	Analysis Date: 05/09/2017	Seq No: 7505767							
Analyte	Result	RPT Limit	SPK value	SPK Ref Val	%REC	Low Limit	High Limit	RPD Ref Val	%RPD	RPD Limit	Qual

Lead 99.06 1.00 100.0 1.311 97.8 70 130

Sample ID: 1704M38-061AMSD	Client ID: 0497-042717-CS-002-A	Units: ug/L	Prep Date: 05/08/2017	Run No: 342553							
SampleType: MSD	TestCode: Trace Elements by ICP/MS E200.8	BatchID: 242192	Analysis Date: 05/09/2017	Seq No: 7505764							
Analyte	Result	RPT Limit	SPK value	SPK Ref Val	%REC	Low Limit	High Limit	RPD Ref Val	%RPD	RPD Limit	Qual

Lead 101.2 1.00 100.0 7.863 93.4 70 130 102.1 0.838 20

Qualifiers:	> Greater than Result value	< Less than Result value	B Analyte detected in the associated method blank
	BRL Below reporting limit	E Estimated (value above quantitation range)	H Holding times for preparation or analysis exceeded
	J Estimated value detected below Reporting Limit	N Analyte not NELAC certified	R RPD outside limits due to matrix
	Rpt Lim Reporting Limit	S Spike Recovery outside limits due to matrix	

Leona Miles

From: NoReply@aesatlanta.net
Sent: Wednesday, October 25, 2017 1:06 PM
To: leona-miles@aem-net.com; tim-royer@aem-net.com
Subject: DCSD - 0497
Attachments: 1710D48_REPORT.pdf; 1710D48Invoice.pdf

Please see attached. If you have any questions or need further assistance please contact your project manager at 770-457-8177.

AES Reporting System

ANALYTICAL ENVIRONMENTAL SERVICES, INC.
3080 Presidential Drive ATLANTA, GA 30340
Tel: 770-457-8177 Fax: 770-457-8188
<http://www.aesatlanta.com>

NOTICE OF CONFIDENTIALITY: The information in this email and / or attachments may be legally privileged and is confidential information intended for the use of the individual or entity named in the email address. If the reader of this message is not the intended recipient, you are hereby notified that any use, dissemination, distribution, or copy of this email and / or attachments is strictly prohibited. If you have received this email in error, please notify Analytical Environmental Services Customer Service by telephone at (770) 457-8177 or by email at info@aesatlanta.com <<mailto:info@aesatlanta.com>> and delete the message. Thank you



ANALYTICAL ENVIRONMENTAL SERVICES, INC.

October 25, 2017

Leona Miles
Atlanta Environmental Mgmt
2580 NE Expressway
Atlanta GA 30345

RE: DCSD - 0497

Dear Leona Miles:

Order No: 1710D48

Analytical Environmental Services, Inc. received 2 samples on 10/13/2017 9:11:00 AM for the analyses presented in following report.

No problems were encountered during the analyses. Additionally, all results for the associated Quality Control samples were within EPA and/or AES established limits. Any discrepancies associated with the analyses contained herein will be noted and submitted in the form of a project Case Narrative.

AES's accreditations are as follows:

-NELAP/State of Florida Laboratory ID E87582 for analysis of Non-Potable Water, Solid & Chemical Materials, Air & Emissions Volatile Organics, and Drinking Water Microbiology & Metals, effective 07/01/17-06/30/18.

State of Georgia, Department of Natural Resources ID #800 for analysis of Drinking Water Metals, effective 07/01/17-06/30/18 and Total Coliforms/ E. coli, effective 04/25/17-04/24/20.

-NELAP/Louisiana Agency Interest No. 100818 for or analysis of Non-Potable Water and Solid & Chemical Materials, effective 07/01/17-06/30/18.

-AIHA-LAP, LLC Laboratory ID: 100671 for Industrial Hygiene samples (Organics, Metals, PCM Asbestos, Gravimetric), Environmental Lead (Paint, Soil, Dust Wipes, Air), and Environmental Microbiology (Fungal) Direct Examination, effective until 11/01/17.

These results relate only to the items tested. This report may only be reproduced in full.

If you have any questions regarding these test results, please feel free to call.

Sincerely,

Ioana Pacurar
Project Manager



ANALYTICAL ENVIRONMENTAL SERVICES, INC

3080 Presidential Drive, Atlanta GA 30340-3704

TEL.: (770) 457-8177 / TOLL-FREE (800) 972-4889 / FAX: (770) 457-8188

CHAIN OF CUSTODY

Work Order: 1710048

Date: 10/13/17 Page 1 of 1

COMPANY: Atlanta Environmental Management Inc		ADDRESS: 2580 Northeast Expressway NE Atlanta, GA 30345					ANALYSIS REQUESTED										Visit our website www.aesatlanta.com to check on the status of your results, place bottle orders, etc.		No # of Containers
PHONE: 404-329-9006		FAX: 404-329-2057					PRESERVATION (See codes)												
SAMPLED BY: <i>Andy Jensen</i>		SIGNATURE: <i>[Signature]</i>					Lead (200.8)										REMARKS		
#	SAMPLE ID	DATE	TIME	Grab	Composite	Matrix (See codes)												REMARKS	
1	0497-101317-CS-005-A	10/13/17	0527	X		DW	X												
2	0497-101317-CS-005-B	10/13/17	0528	X		DW	X												
3																			
4																			
5																			
6																			
7																			
8																			
9																			
10																			
11																			
12																			
13																			
14																			
15																			
RELINQUISHED BY		DATE/TIME		RECEIVED BY		DATE/TIME		PROJECT INFORMATION										RECEIPT	
1: <i>Alisa</i>		10/13/17 0911		1: <i>[Signature]</i>		10/13/17 0911		PROJECT NAME: DCSD										Total # of Containers	
2:				2:				PROJECT #: 1561-1601										Turnaround Time Request <input type="radio"/> Standard 5 Business Days <input type="radio"/> 2 Business Day Rush <input type="radio"/> Next Business Day Rush <input type="radio"/> Same Day Rush (auth req.) <input checked="" type="radio"/> Other: 10 business Days	
3:				3:				SITE ADDRESS: 0497											
SPECIAL INSTRUCTIONS/COMMENTS:				SHIPMENT METHOD				SEND REPORT TO: leona-miles@aem-net.com										STATE PROGRAM (if any): _____	
Preserve at Lab				OUT 1 1 VIA:				INVOICE TO: Leona Miles (IF DIFFERENT FROM ABOVE)										E-mail? Y/N; Fax? Y/N	
				IN <input checked="" type="radio"/> CLIENT FedEx UPS MAIL COURIER				QUOTE #: _____ PO#: _____										DATA PACKAGE: I II III IV	
				GREYHOUND OTHER _____															

SAMPLES RECEIVED AFTER 3PM OR SATURDAY ARE CONSIDERED AS RECEIVED ON THE NEXT BUSINESS DAY; IF NO TAT IS MARKED ON COC AES WILL PROCEED AS STANDARD TAT.
SAMPLES ARE DISPOSED OF 30 DAYS AFTER COMPLETION OF REPORT UNLESS OTHER ARRANGEMENTS ARE MADE.

MATRIX CODES: A = Air GW = Groundwater SE = Sediment SO = Soil SW = Surface Water DW = Drinking Water W = Water (Blanks) O = Other (specify)
PRESERVATIVE CODES: H+I = Hydrochloric acid + ice I = Ice only N = Nitric acid S+I = Sulfuric acid + ice S/M+I = Sodium Bisulfate/Methanol + ice O = Other (specify) NA = None

Analytical Environmental Services, Inc

Date: 25-Oct-17

Client: Atlanta Environmental Mgmt	Client Sample ID: 0497-101317-CS-005-A
Project Name: DCSD - 0497	Collection Date: 10/13/2017 5:27:00 AM
Lab ID: 1710D48-001	Matrix: Drinking Water

Analyses	Result	Reporting Limit	Qual	Units	BatchID	Dilution Factor	Date Analyzed	Analyst
Trace Elements by ICP/MS E200.8								
				(E200.2)				
Lead	12.1	1.00		ug/L	250044	1	10/24/2017 16:21	JR

Qualifiers:

- * Value exceeds maximum contaminant level
- BRL Below reporting limit
- H Holding times for preparation or analysis exceeded
- N Analyte not NELAC certified
- B Analyte detected in the associated method blank
- > Greater than Result value

- E Estimated (value above quantitation range)
- S Spike Recovery outside limits due to matrix
- Narr See case narrative
- NC Not confirmed
- < Less than Result value
- J Estimated value detected below Reporting Limit

Analytical Environmental Services, Inc

Date: 25-Oct-17

Client: Atlanta Environmental Mgmt	Client Sample ID: 0497-101317-CS-005-B
Project Name: DCSD - 0497	Collection Date: 10/13/2017 5:28:00 AM
Lab ID: 1710D48-002	Matrix: Drinking Water

Analyses	Result	Reporting Limit	Qual	Units	BatchID	Dilution Factor	Date Analyzed	Analyst
Trace Elements by ICP/MS E200.8					(E200.2)			
Lead	1.33	1.00		ug/L	250044	1	10/24/2017 16:22	JR

Qualifiers:

- * Value exceeds maximum contaminant level
- BRL Below reporting limit
- H Holding times for preparation or analysis exceeded
- N Analyte not NELAC certified
- B Analyte detected in the associated method blank
- > Greater than Result value

- E Estimated (value above quantitation range)
- S Spike Recovery outside limits due to matrix
- Narr See case narrative
- NC Not confirmed
- < Less than Result value
- J Estimated value detected below Reporting Limit

SAMPLE/COOLER RECEIPT CHECKLIST

1. Client Name: _____

AES Work Order Number: _____

2. Carrier: FedEx UPS USPS Client Courier Other _____

	Yes	No	N/A	Details	Comments
3. Shipping container/cooler received in good condition?				damaged <input type="checkbox"/> leaking <input type="checkbox"/> other <input type="checkbox"/>	
4. Custody seals present on shipping container?					
5. Custody seals intact on shipping container?					
6. Temperature blanks present?					
7. Cooler temperature(s) within limits of 0-6°C? [See item 13 and 14 for temperature recordings.]				Cooling initiated for recently collected samples / ice present <input type="checkbox"/>	
8. Chain of Custody (COC) present?					
9. Chain of Custody signed, dated, and timed when relinquished and received?					
10. Sampler name and/or signature on COC?					
11. Were all samples received within holding time?					
12. TAT marked on the COC?				If no TAT indicated, proceeded with standard TAT per Terms & Conditions. <input type="checkbox"/>	

13. Cooler 1 Temperature _____ °C Cooler 2 Temperature _____ °C Cooler 3 Temperature _____ °C Cooler 4 Temperature _____ °C
 Cooler 5 Temperature _____ °C Cooler 6 Temperature _____ °C Cooler 7 Temperature _____ °C Cooler 8 Temperature _____ °C

15. Comments: _____

I certify that I have completed sections 1-15 (dated initials). _____

	Yes	No	N/A	Details	Comments
16. Were sample containers intact upon receipt?					
17. Custody seals present on sample containers?					
18. Custody seals intact on sample containers?					
19. Do sample container labels match the COC?				incomplete info <input type="checkbox"/> illegible <input type="checkbox"/> no label <input type="checkbox"/> other <input type="checkbox"/>	
20. Are analyses requested indicated on the COC?					
21. Were all of the samples listed on the COC received?				samples received but not listed on COC <input type="checkbox"/> samples listed on COC not received <input type="checkbox"/>	
22. Was the sample collection date/time noted?					
23. Did we receive sufficient sample volume for indicated analyses?					
24. Were samples received in appropriate containers?					
25. Were VOA samples received without headspace (< 1/4" bubble)?					
26. Were trip blanks submitted?				listed on COC <input type="checkbox"/> not listed on COC <input type="checkbox"/>	

27. Comments: _____

I certify that I have completed sections 16-27 (dated initials). _____

	Yes	No	N/A	Details	Comments
28. Have containers needing chemical preservation been checked? *					
29. Containers meet preservation guidelines?					
30. Was pH adjusted at Sample Receipt?					

I certify that I have completed sections 28-30 (dated initials). _____

Client: Atlanta Environmental Mgmt
 Project Name: DCSD - 0497
 Workorder: 1710D48

ANALYTICAL QC SUMMARY REPORT

BatchID: 250044

Sample ID: MB-250044	Client ID:	Units: ug/L	Prep Date: 10/17/2017	Run No: 354994							
SampleType: MBLK	TestCode: Trace Elements by ICP/MS E200.8	BatchID: 250044	Analysis Date: 10/20/2017	Seq No: 7816606							
Analyte	Result	RPT Limit	SPK value	SPK Ref Val	%REC	Low Limit	High Limit	RPD Ref Val	%RPD	RPD Limit	Qual

Lead BRL 1.00

Sample ID: LCS-250044	Client ID:	Units: ug/L	Prep Date: 10/17/2017	Run No: 354994							
SampleType: LCS	TestCode: Trace Elements by ICP/MS E200.8	BatchID: 250044	Analysis Date: 10/20/2017	Seq No: 7816607							
Analyte	Result	RPT Limit	SPK value	SPK Ref Val	%REC	Low Limit	High Limit	RPD Ref Val	%RPD	RPD Limit	Qual

Lead 97.53 1.00 100.0 97.5 85 115

Sample ID: 1710D47-001AMS	Client ID:	Units: ug/L	Prep Date: 10/17/2017	Run No: 354994							
SampleType: MS	TestCode: Trace Elements by ICP/MS E200.8	BatchID: 250044	Analysis Date: 10/20/2017	Seq No: 7816609							
Analyte	Result	RPT Limit	SPK value	SPK Ref Val	%REC	Low Limit	High Limit	RPD Ref Val	%RPD	RPD Limit	Qual

Lead 97.99 1.00 100.0 0.8218 97.2 70 130

Sample ID: 1710D48-002AMS	Client ID: 0497-101317-CS-005-B	Units: ug/L	Prep Date: 10/17/2017	Run No: 354994							
SampleType: MS	TestCode: Trace Elements by ICP/MS E200.8	BatchID: 250044	Analysis Date: 10/20/2017	Seq No: 7816612							
Analyte	Result	RPT Limit	SPK value	SPK Ref Val	%REC	Low Limit	High Limit	RPD Ref Val	%RPD	RPD Limit	Qual

Lead 99.99 1.00 100.0 1.550 98.4 70 130

Sample ID: 1710D47-001AMSD	Client ID:	Units: ug/L	Prep Date: 10/17/2017	Run No: 354994							
SampleType: MSD	TestCode: Trace Elements by ICP/MS E200.8	BatchID: 250044	Analysis Date: 10/20/2017	Seq No: 7816610							
Analyte	Result	RPT Limit	SPK value	SPK Ref Val	%REC	Low Limit	High Limit	RPD Ref Val	%RPD	RPD Limit	Qual

Lead 99.54 1.00 100.0 0.8218 98.7 70 130 97.99 1.56 20

Qualifiers: > Greater than Result value < Less than Result value B Analyte detected in the associated method blank
 BRL Below reporting limit E Estimated (value above quantitation range) H Holding times for preparation or analysis exceeded
 J Estimated value detected below Reporting Limit N Analyte not NELAC certified R RPD outside limits due to matrix
 Rpt Lim Reporting Limit S Spike Recovery outside limits due to matrix