



October 31, 2016

Via E-Mail: Joshua_I_williams@dekalbschoolsga.org

Mr. Joshua L. Williams, MBA, MSM, PMP
Chief Operations Officer
DeKalb County School District
Operations Division
Sam Moss Service Center
1780 Montreal Road
Tucker, Georgia 30084

**Re: Lead in Drinking Water Sample Results
Sagamore Hills Elementary School (Facility ID #5065)
1865 Alderbrook Road, Atlanta, Georgia 30345
AEM Project No. 1561-1601**

Dear Mr. Williams:

Atlanta Environmental Management, Inc. (AEM) is pleased to provide the DeKalb County School District (DCSD) an electronic copy of the Lead in Drinking Water Sample Results for Sagamore Hills Elementary School (Facility ID #5065). Samples were collected on October 13, 2016, and analytical results were received from Analytical Environmental Services, Inc., on October 27, 2016.

FINDINGS

AEM collected 52 drinking water samples from 26 sources at Sagamore Hills Elementary School (Facility ID #5065), including two duplicate samples. A description of the drinking water outlets sampled and a summary of sample analytical results are provided in the attached table.

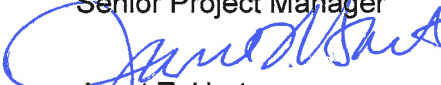
None of the samples collected and analyzed contained lead at a concentration equal to or above EPA's action level of 15 parts per billion.

We appreciate your selection of AEM for this project. If you have any questions, please do not hesitate to contact us.

Sincerely,

Atlanta Environmental Management, Inc.


Leona Miles, CHMM
Senior Project Manager


Janet T. Hart
President

/krf
cc: Daniel Drake (DCSD)
Tracee Hill (DCSD)
Sandra Glen (DeKalb County Watershed Management)
Ryan Cira (DeKalb Board of Health)

Attachment: Table

Table 1. Summary of Lead in Drinking Water Laboratory Analytical Results
Sagamore Hills Elementary School
1865 Alderbrook Road Atlanta, GA, 30345



Sample ID*	Sample Location Description	Sample Date & Time	Lead Test Results (ppb)
5065-101316-DF-001-A	Initial Draw sample; Upper Left Wall-mounted Elkay Drinking Fountain in hallway across from Rm 16	10/13/16 5:33 AM	None Detected
5065-101316-DF-001-B	Flush sample; Upper Left Wall-mounted Elkay Drinking Fountain in hallway across from Rm 16	10/13/16 5:34 AM	None Detected
5065-101316-DF-002-A	Initial Draw sample; Lower Right Wall-mounted Elkay Drinking Fountain in hallway across from Rm 16	10/13/16 5:36 AM	None Detected
5065-101316-DF-002-B	Flush sample; Lower Right Wall-mounted Elkay Drinking Fountain in hallway across from Rm 16	10/13/16 5:37 AM	None Detected
5065-101316-DF-003-A	Initial Draw sample; Elkay short Drinking Fountain on right near Rm 2	10/13/16 5:47 AM	None Detected
5065-101316-DF-003-B	Flush sample; Elkay short Drinking Fountain on right near Rm 2	10/13/16 5:48 AM	None Detected
5065-101316-DF-004-A	Initial Draw sample; Elkay tall Drinking Fountain on left near Rm 2	10/13/16 5:51 AM	None Detected
5065-101316-DF-004-B	Flush sample; Elkay tall Drinking Fountain on left near Rm 2	10/13/16 5:52 AM	None Detected
5065-101316-DF-005-A	Initial Draw sample; Elkay Drinking Fountain on left near Rm 12	10/13/16 4:59 AM	None Detected
5065-101316-DF-005-B	Flush sample; Elkay Drinking Fountain on left near Rm 12	10/13/16 5:00 AM	None Detected
5065-101316-DF-006-A	Initial Draw sample; Elkay Drinking Fountain on right near Rm 12	10/13/16 5:02 AM	None Detected
5065-101316-DF-006-B	Flush sample; Elkay Drinking Fountain on right near Rm 12	10/13/16 5:03 AM	None Detected
5065-101316-DF-007-A	Initial Draw sample; Single Wall-mounted Elkay Drinking Fountain in hallway near Rm 24	10/13/16 5:51 AM	None Detected
5065-101316-DF-007-B	Flush sample; Single Wall-mounted Elkay Drinking Fountain in hallway near Rm 24	10/13/16 5:52 AM	None Detected
5065-101316-DF-008-A	Initial Draw sample; Short Wall-mounted Elkay Drinking Fountain on left in hallway near Rm 21	10/13/16 5:45 AM	None Detected
5065-101316-DF-008-B	Flush sample; Short Wall-mounted Elkay Drinking Fountain on left in hallway near Rm 21	10/13/16 5:46 AM	None Detected
5065-101316-DF-009-A	Initial Draw sample; Upper Right Wall-mounted Elkay Drinking Fountain in hallway near Rm 21	10/13/16 5:48 AM	None Detected
5065-101316-DF-009-B	Flush sample; Upper Right Wall-mounted Elkay Drinking Fountain in hallway near Rm 21	10/13/16 5:49 AM	None Detected
5065-101316-DF-010-A	Initial Draw sample; Lower Left Wall-mounted Drinking Fountain outside the Gym entrance	10/13/16 5:18 AM	1.58
5065-101316-DF-010-B	Flush sample; Lower Left Wall-mounted Drinking Fountain outside the Gym entrance	10/13/16 5:19 AM	1.41
5065-101316-DF-011-A	Initial Draw sample; Upper Right Drinking Fountain outside Gym entrance	10/13/16 5:20 AM	3.29
5065-101316-DF-011-B	Flush sample; Upper Right Drinking Fountain outside Gym entrance	10/13/16 5:21 AM	None Detected

Table 1. Summary of Lead in Drinking Water Laboratory Analytical Results
Sagamore Hills Elementary School
1865 Alderbrook Road Atlanta, GA, 30345



Sample ID*	Sample Location Description	Sample Date & Time	Lead Test Results (ppb)
5065-101316-DF-012-A	Initial Draw sample; Lower Right Wall-mounted Elkay Drinking Fountain inside Gym	10/13/16 5:26 AM	None Detected
5065-101316-DF-012-B	Flush sample; Lower Right Wall-mounted Elkay Drinking Fountain inside Gym	10/13/16 5:27 AM	None Detected
5065-101316-DF-013-A	Initial Draw sample; Upper Left Wall-mounted Elkay Drinking Fountain inside Gym	10/13/16 5:29 AM	None Detected
5065-101316-DF-013-B	Flush sample; Upper Left Wall-mounted Elkay Drinking Fountain inside Gym	10/13/16 5:30 AM	None Detected
5065-101316-DF-014-A	Initial Draw sample; Upper Left Wall-mounted Elkay Drinking Fountain inside the Cafeteria	10/13/16 5:06 AM	None Detected
5065-101316-DF-014-B	Flush sample; Upper Left Wall-mounted Elkay Drinking Fountain inside the Cafeteria	10/13/16 5:07 AM	None Detected
5065-101316-DF-015-A	Initial Draw sample; Lower Right Wall-mounted Elkay Drinking Fountain inside the Cafeteria	10/13/16 5:11 AM	None Detected
5065-101316-DF-015-B	Flush sample; Lower Right Wall-mounted Elkay Drinking Fountain inside the Cafeteria	10/13/16 5:12 AM	None Detected
5065-101316-KS-001-A	Initial Draw sample; Kindergarten Sink with bubbler in Rm 4; sampled from bubbler	10/13/16 5:33 AM	None Detected
5065-101316-KS-001-B	Flush sample; Kindergarten Sink with bubbler in Rm 4; sampled from bubbler	10/13/16 5:35 AM	None Detected
5065-101316-KS-002-A	Initial Draw sample; Kindergarten Sink with bubbler in Rm 6; sampled from bubbler	10/13/16 5:28 AM	None Detected
5065-101316-KS-002-B	Flush sample; Kindergarten Sink with bubbler in Rm 6; sampled from bubbler	10/13/16 5:29 AM	None Detected
5065-101316-KS-003-A	Initial Draw sample; Kindergarten Sink with bubbler in Rm 8; sampled from bubbler	10/13/16 5:23 AM	None Detected
5065-101316-KS-003-B	Flush sample; Kindergarten Sink with bubbler in Rm 8; sampled from bubbler	10/13/16 5:24 AM	None Detected
5065-101316-KS-004-A	Initial Draw sample; Kindergarten Sink with bubbler in Rm 10; sampled from fountain	10/13/16 5:13 AM	2.63
5065-101316-KS-004-B	Flush sample; Kindergarten Sink with bubbler in Rm 10; sampled from fountain	10/13/16 5:14 AM	None Detected
5065-101316-KS-005-A	Initial Draw sample; Kindergarten Sink with bubbler in Rm 9; sampled from bubbler	10/13/16 5:19 AM	None Detected
5065-101316-KS-005-B	Flush sample; Kindergarten Sink with bubbler in Rm 9; sampled from bubbler	10/13/16 5:20 AM	None Detected
5065-101316-KS-006-A	Initial Draw sample; Kindergarten Sink with bubbler in Rm 11; sampled from bubbler	10/13/16 5:08 AM	None Detected
5065-101316-KS-006-B	Flush sample; Kindergarten Sink with bubbler in Rm 11; sampled from bubbler	10/13/16 5:09 AM	None Detected
5065-101316-RS-001-A	Initial Draw sample; Boys RR across from Rm 18; Far left sink	10/13/16 5:40 AM	None Detected
5065-101316-RS-001-B	Flush sample; Boys RR across from Rm 18; Far left sink	10/13/16 5:41 AM	None Detected
5065-101316-TL-001-A	Initial Draw sample; Sink in Teacher's lounge/Rm 4.4; Faucet was dripping on arrival	10/13/16 5:40 AM	None Detected
5065-101316-TL-001-B	Flush sample; Sink in Teacher's lounge/Rm 4.4; Faucet was dripping on arrival	10/13/16 5:41 AM	None Detected
5065-101316-CS-001-A	Initial Draw sample; Food Prep sink in kitchen next to the ice machine	10/13/16 5:01 AM	None Detected
5065-101316-CS-001-B	Flush sample; Food Prep sink in kitchen next to the ice machine	10/13/16 5:02 AM	None Detected

Table 1. Summary of Lead in Drinking Water Laboratory Analytical Results
Sagamore Hills Elementary School
 1865 Alderbrook Road Atlanta, GA, 30345



Sample ID*	Sample Location Description	Sample Date & Time	Lead Test Results (ppb)
5065-101316-IM-001-A	Prodigy Plus ice machine in kitchen	10/13/16 4:57 AM	None Detected
5065-101316-SC-001-A	Service Connection line at Ravenwood Way; 2 meters were identified; sampled Meter number 65315485	10/13/16 6:13 AM	**

Notes:

ppb-parts per billion

Bold-Exceeds 15 ppb--EPA's Action Level for Lead

* Note--Where "A" and "B" are indicated, AEM collected two samples at each source area location: ("A") initial draw sample; and ("B") after a 30-second flush sample

**Information provided by DeKalb County Watershed Management



May 10, 2017

Via E-Mail: Joshua_I_williams@dekalbschoolsga.org

Mr. Joshua L. Williams, MBA, MSM, PMP
Chief Operations Officer
DeKalb County School District
Operations Division
Sam Moss Service Center
1780 Montreal Road
Tucker, Georgia 30084

**Re: Summary of Additional Lead in Drinking Water Sample Results
Sagamore Hills Elementary School (Facility ID #5065)
1865 Alderbrook Road, Atlanta, Georgia 30345
AEM Project No. 1561-1601**

Dear Mr. Williams:

Atlanta Environmental Management, Inc. (AEM) is pleased to provide the DeKalb County School District (DCSD) an electronic copy of the Lead in Drinking Water Sample Results for Sagamore Elementary School (Facility ID #5065). Additional drinking water samples from select source units were collected on March 28, 2017, and analytical results were received from Analytical Environmental Services, Inc., on April 11, 2017.

FINDINGS

Sample Results of Previously Identified Source Units That Were Inconclusive

During the initial sampling event on October 13, 2016, the analytical result for the service connection was inconclusive. A resampling of the service connection was conducted on March 28, 2017, where AEM collected one sample. A description of the drinking water outlet sampled and a summary of sample analytical results are provided in Table 1.

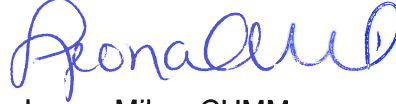
The result for the service connection was below EPA's action level of 15 ppb.

Mr. Joshua Williams—DeKalb County School District
May 10, 2017
Page 2

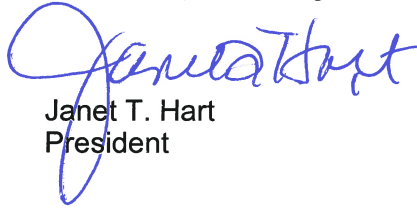
We appreciate your selection of AEM for this project. If you have any questions, please do not hesitate to contact us.

Sincerely,

Atlanta Environmental Management, Inc.



Leona Miles, CHMM
Senior Project Manager



Janet T. Hart
President

/krf

cc: Daniel Drake (DCSD)
Tracee Hill (DCSD)
Sandra Glenn (DeKalb County Watershed Management)
Ryan Cira (DeKalb Board of Health)

Attachment: Table

Table 1. Summary of Lead in Drinking Water Laboratory Analytical Results for Retest Samples

Sagamore Hills Elementary School

1865 Alderbrook Road, Atlanta, GA 30345



Sample ID ^{*/**}	Sample Location Description	Sample Date & Time	Lead Test Results (ppb)
5065-032817-SC-001-A	Service Connection Entry into Building	3/28/17 4:45 AM	None Detected

Notes:

ppb-parts per billion

Bold-Exceeds 15 ppb--EPA's Action Level for Lead

* Note--Where "A" and "B" are indicated, AEM collected two samples at each source area location: ("A") initial draw sample; and ("B") after a 30-second flush sample

**Source unit was initially sampled on 10/13/16 and the initial result was inconclusive. The above summarizes the retesting results



June 14, 2017

Via E-Mail: Joshua_I_williams@dekalbschoolsga.org

Mr. Joshua L. Williams, MBA, MSM, PMP
Chief Operations Officer
DeKalb County School District
Operations Division
Sam Moss Service Center
1780 Montreal Road
Tucker, Georgia 30084

**Re: Lead in Drinking Water Sampling Report
Sagamore Hills Elementary School (Facility ID #5065)
1865 Alderbrook Road, Atlanta, Georgia 30345
AEM Project No. 1561-1601**

Dear Mr. Williams:

Atlanta Environmental Management, Inc. (AEM) is pleased to provide the DeKalb County School District (DCSD) an electronic copy of the Final Technical Lead in Drinking Water Sampling Report for Sagamore Hills Elementary School (Facility ID #5065).

Initial sampling was conducted on October 13, 2016, and analytical results were received from Analytical Environmental Services, Inc., on October 27, 2016. Additional drinking water samples from select source units were collected on March 28, 2017, and analytical results were received from Analytical Environmental Services, Inc., on April 11, 2017.

FINDINGS

Initial Testing

AEM collected 52 drinking water samples from 26 sources at Sagamore Hills Elementary School (Facility ID #5065), including 2 duplicate samples (see Figure 1). Samples were collected in accordance with the Water Sampling Methodology Protocol for DeKalb County School District, dated September 12, 2016. A copy of AEM's Field Sampling Notes is provided in Attachment A.

A description of the drinking water outlets sampled and a summary of sample analytical results are provided in Table 1. None of the samples collected and analyzed contained lead at a concentration equal to or above the U.S. Environmental Protection Agency's action level of 15 parts per billion (ppb). A copy of the AES laboratory analytical report is provided in Attachment B.

In addition, DeKalb County Watershed Management (DCWM) collected a split sample with AEM from the Service Connection Water Line adjacent to Midway Road. DCWM's sample (29-Sagamore Hills) was analyzed by Pace Analytical Services, Inc. An excerpt from the Pace laboratory analytical report is provided in Attachment C.

Sample Results of Previously Identified Source Units That Were Inconclusive

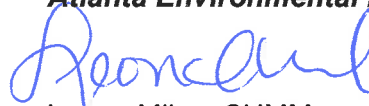
During the initial sampling event on October 13, 2016, the analytical result for the service connection was inconclusive. A resampling of the service connection was conducted on March 28, 2017, where AEM collected one sample. A description of the drinking water outlet sampled and a summary of sample analytical results are provided in Table 1.

The result for the service connection was below EPA's action level of 15 ppb. A copy of the AES laboratory analytical report is provided in Attachment B.

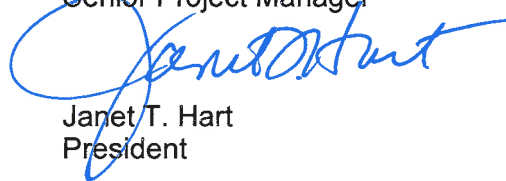
We appreciate your selection of AEM for this project. If you have any questions, please do not hesitate to contact us.

Sincerely,

Atlanta Environmental Management, Inc.



Leona Miles, CHMM
Senior Project Manager



Janet T. Hart
President

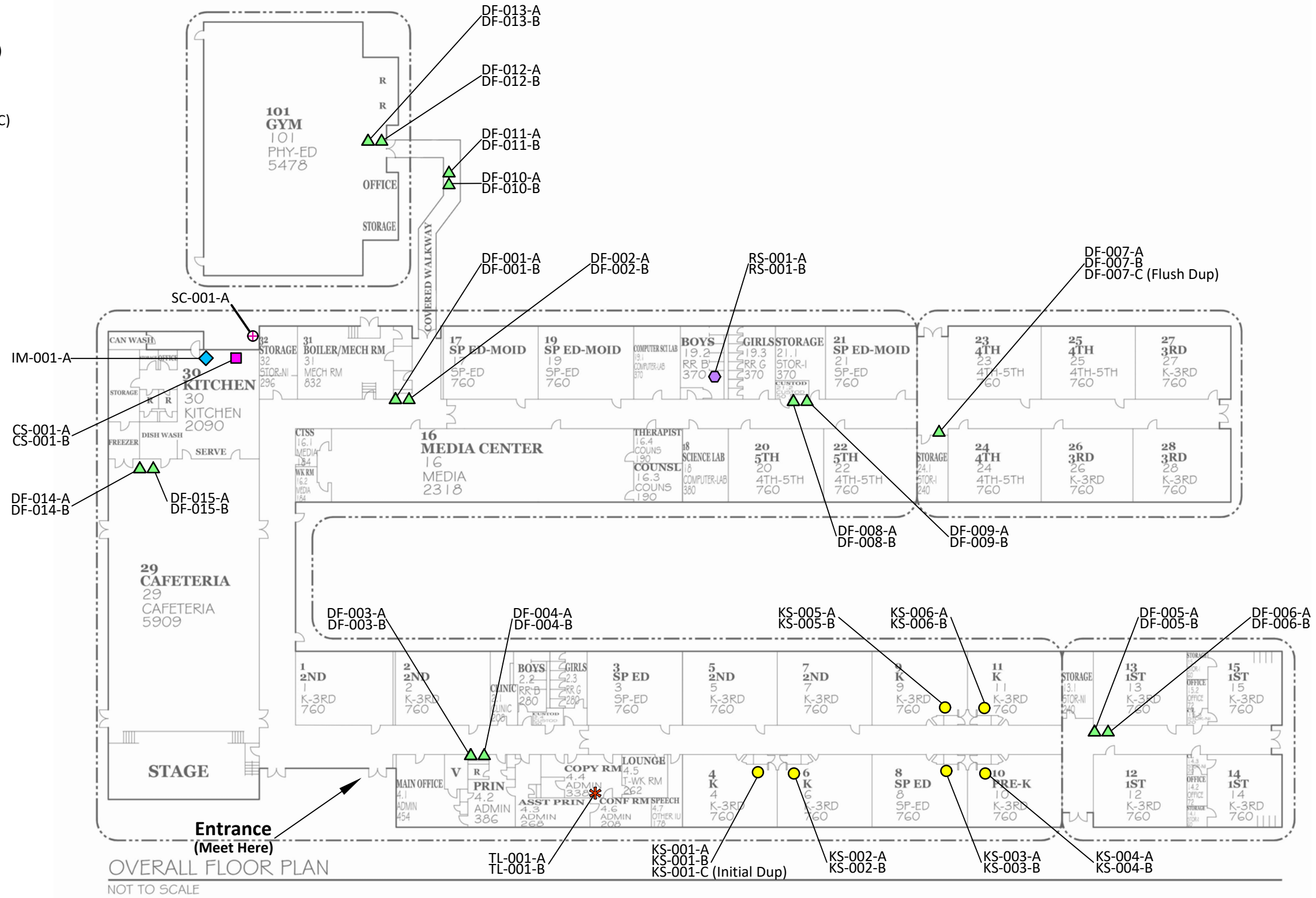
/krf


cc: Daniel Drake (DCSD)
Tracee Hill (DCSD)

FIGURE

Legend

- - Cafeteria Sink (CS)
- ▲ - Drinking Fountain (DF)
- ◆ - Ice Maker (IM)
- - Kindergarten Sink (KS)
- - Restroom Sink (RS)
- ⊕ - Service Connection (SC)
- * - Teachers Lounge (TL)



 Atlanta Environmental Management, Inc. Environmental Consulting, Engineering, Hydrogeologic Services 2580 Northeast Expressway • Atlanta, Georgia 30345 Phone: 404.329.9006 • Fax: 404.329.2057		Client: DeKalb County School District Site Location: Sagamore Hills Elementary Facility (#5065) 1865 Alderbrook Road Atlanta, GA 30345	
PROJECT #:	1561-1601-5065	DATE:	June 5, 2017
DRAWN BY:	AL	REVISED:	----
CHECKED BY:	TR	SCALE:	NTS
PROJECT MGR:	LM	PRINTED:	6/5/2017 2:11 PM
Sample Location Plan			Figure 1

G:\DWG\1561-1601 DeKalb County Schools\5065\5065

TABLE

Table 1. Summary of Lead in Drinking Water Laboratory Analytical Results

Sagamore Hills Elementary School

1865 Alderbrook Road, Atlanta, GA 30345



Sample ID*	Sample Location Description	Sample Date & Time	Lead Test Results (ppb)
5065-101316-DF-001-A	Initial Draw sample; Upper Left Wall-mounted Elkay Drinking Fountain in hallway across from Rm 16	10/13/16 5:33 AM	None Detected
5065-101316-DF-001-B	Flush sample; Upper Left Wall-mounted Elkay Drinking Fountain in hallway across from Rm 16	10/13/16 5:34 AM	None Detected
5065-101316-DF-002-A	Initial Draw sample; Lower Right Wall-mounted Elkay Drinking Fountain in hallway across from Rm 16	10/13/16 5:36 AM	None Detected
5065-101316-DF-002-B	Flush sample; Lower Right Wall-mounted Elkay Drinking Fountain in hallway across from Rm 16	10/13/16 5:37 AM	None Detected
5065-101316-DF-003-A	Initial Draw sample; Elkay short Drinking Fountain on right near Rm 2	10/13/16 5:47 AM	None Detected
5065-101316-DF-003-B	Flush sample; Elkay short Drinking Fountain on right near Rm 2	10/13/16 5:48 AM	None Detected
5065-101316-DF-004-A	Initial Draw sample; Elkay tall Drinking Fountain on left near Rm 2	10/13/16 5:51 AM	None Detected
5065-101316-DF-004-B	Flush sample; Elkay tall Drinking Fountain on left near Rm 2	10/13/16 5:52 AM	None Detected
5065-101316-DF-005-A	Initial Draw sample; Elkay Drinking Fountain on left near Rm 12	10/13/16 4:59 AM	None Detected
5065-101316-DF-005-B	Flush sample; Elkay Drinking Fountain on left near Rm 12	10/13/16 5:00 AM	None Detected
5065-101316-DF-006-A	Initial Draw sample; Elkay Drinking Fountain on right near Rm 12	10/13/16 5:02 AM	None Detected
5065-101316-DF-006-B	Flush sample; Elkay Drinking Fountain on right near Rm 12	10/13/16 5:03 AM	None Detected
5065-101316-DF-007-A	Initial Draw sample; Single Wall-mounted Elkay Drinking Fountain in hallway near Rm 24	10/13/16 5:51 AM	None Detected
5065-101316-DF-007-B	Flush sample; Single Wall-mounted Elkay Drinking Fountain in hallway near Rm 24	10/13/16 5:52 AM	None Detected
5065-101316-DF-007-C	Flush Duplicate sample; Single Wall-mounted Elkay Drinking Fountain in hallway near Rm 24	10/13/16 5:53 AM	None Detected
5065-101316-DF-008-A	Initial Draw sample; Short Wall-mounted Elkay Drinking Fountain on left in hallway near Rm 21	10/13/16 5:45 AM	None Detected
5065-101316-DF-008-B	Flush sample; Short Wall-mounted Elkay Drinking Fountain on left in hallway near Rm 21	10/13/16 5:46 AM	None Detected
5065-101316-DF-009-A	Initial Draw sample; Upper Right Wall-mounted Elkay Drinking Fountain in hallway near Rm 21	10/13/16 5:48 AM	None Detected
5065-101316-DF-009-B	Flush sample; Upper Right Wall-mounted Elkay Drinking Fountain in hallway near Rm 21	10/13/16 5:49 AM	None Detected
5065-101316-DF-010-A	Initial Draw sample; Lower Left Wall-mounted Drinking Fountain outside the Gym entrance	10/13/16 5:18 AM	1.58

Table 1. Summary of Lead in Drinking Water Laboratory Analytical Results

Sagamore Hills Elementary School

1865 Alderbrook Road, Atlanta, GA 30345



Sample ID*	Sample Location Description	Sample Date & Time	Lead Test Results (ppb)
5065-101316-DF-010-B	Flush sample; Lower Left Wall-mounted Drinking Fountain outside the Gym entrance	10/13/16 5:19 AM	1.41
5065-101316-DF-011-A	Initial Draw sample; Upper Right Drinking Fountain outside Gym entrance	10/13/16 5:20 AM	3.29
5065-101316-DF-011-B	Flush sample; Upper Right Drinking Fountain outside Gym entrance	10/13/16 5:21 AM	None Detected
5065-101316-DF-012-A	Initial Draw sample; Lower Right Wall-mounted Elkay Drinking Fountain inside Gym	10/13/16 5:26 AM	None Detected
5065-101316-DF-012-B	Flush sample; Lower Right Wall-mounted Elkay Drinking Fountain inside Gym	10/13/16 5:27 AM	None Detected
5065-101316-DF-013-A	Initial Draw sample; Upper Left Wall-mounted Elkay Drinking Fountain inside Gym	10/13/16 5:29 AM	None Detected
5065-101316-DF-013-B	Flush sample; Upper Left Wall-mounted Elkay Drinking Fountain inside Gym	10/13/16 5:30 AM	None Detected
5065-101316-DF-014-A	Initial Draw sample; Upper Left Wall-mounted Elkay Drinking Fountain inside the Cafeteria	10/13/16 5:06 AM	None Detected
5065-101316-DF-014-B	Flush sample; Upper Left Wall-mounted Elkay Drinking Fountain inside the Cafeteria	10/13/16 5:07 AM	None Detected
5065-101316-DF-015-A	Initial Draw sample; Lower Right Wall-mounted Elkay Drinking Fountain inside the Cafeteria	10/13/16 5:11 AM	None Detected
5065-101316-DF-015-B	Flush sample; Lower Right Wall-mounted Elkay Drinking Fountain inside the Cafeteria	10/13/16 5:12 AM	None Detected
5065-101316-KS-001-A	Initial Draw sample; Kindergarten Sink with bubbler in Rm 4; sampled from bubbler	10/13/16 5:33 AM	None Detected
5065-101316-KS-001-B	Flush sample; Kindergarten Sink with bubbler in Rm 4; sampled from bubbler	10/13/16 5:35 AM	None Detected
5065-101316-KS-001-C	Initial Draw Duplicate sample; Kindergarten Sink with bubbler in Rm 4; sampled from bubbler	10/13/16 5:34 AM	None Detected
5065-101316-KS-002-A	Initial Draw sample; Kindergarten Sink with bubbler in Rm 6; sampled from bubbler	10/13/16 5:28 AM	None Detected
5065-101316-KS-002-B	Flush sample; Kindergarten Sink with bubbler in Rm 6; sampled from bubbler	10/13/16 5:29 AM	None Detected
5065-101316-KS-003-A	Initial Draw sample; Kindergarten Sink with bubbler in Rm 8; sampled from bubbler	10/13/16 5:23 AM	None Detected
5065-101316-KS-003-B	Flush sample; Kindergarten Sink with bubbler in Rm 8; sampled from bubbler	10/13/16 5:24 AM	None Detected
5065-101316-KS-004-A	Initial Draw sample; Kindergarten Sink with bubbler in Rm 10; sampled from fountain	10/13/16 5:13 AM	2.63
5065-101316-KS-004-B	Flush sample; Kindergarten Sink with bubbler in Rm 10; sampled from fountain	10/13/16 5:14 AM	None Detected
5065-101316-KS-005-A	Initial Draw sample; Kindergarten Sink with bubbler in Rm 9; sampled from bubbler	10/13/16 5:19 AM	None Detected
5065-101316-KS-005-B	Flush sample; Kindergarten Sink with bubbler in Rm 9; sampled from bubbler	10/13/16 5:20 AM	None Detected
5065-101316-KS-006-A	Initial Draw sample; Kindergarten Sink with bubbler in Rm 11; sampled from bubbler	10/13/16 5:08 AM	None Detected
5065-101316-KS-006-B	Flush sample; Kindergarten Sink with bubbler in Rm 11; sampled from bubbler	10/13/16 5:09 AM	None Detected
5065-101316-RS-001-A	Initial Draw sample; Boys RR across from Rm 18; Far left sink	10/13/16 5:40 AM	None Detected
5065-101316-RS-001-B	Flush sample; Boys RR across from Rm 18; Far left sink	10/13/16 5:41 AM	None Detected
5065-101316-TL-001-A	Initial Draw sample; Sink in Teacher's lounge/Rm 4.4; Faucet was dripping on arrival	10/13/16 5:40 AM	None Detected
5065-101316-TL-001-B	Flush sample; Sink in Teacher's lounge/Rm 4.4; Faucet was dripping on arrival	10/13/16 5:41 AM	None Detected

Table 1. Summary of Lead in Drinking Water Laboratory Analytical Results

Sagamore Hills Elementary School

1865 Alderbrook Road, Atlanta, GA 30345



Sample ID*	Sample Location Description	Sample Date & Time	Lead Test Results (ppb)
5065-101316-CS-001-A	Initial Draw sample; Food Prep sink in kitchen next to the ice machine	10/13/16 5:01 AM	None Detected
5065-101316-CS-001-B	Flush sample; Food Prep sink in kitchen next to the ice machine	10/13/16 5:02 AM	None Detected
5065-101316-IM-001-A	Prodigy Plus ice machine in kitchen	10/13/16 4:57 AM	None Detected
5065-101316-SC-001-A	Service Connection line at Ravenwood Way; 2 meters were identified; sampled Meter number 65315485	10/13/16 6:13 AM	**
5065-032817-SC-001-A	Service Connection Entry into Building	3/28/17 4:45 AM	None Detected
29-Sagamore Hills***	DeKalb County Watershed Management Split Sample of Service Connection	10/13/16 6:13 AM	**

Notes:

ppb-parts per billion

Bold-Exceeds 15 ppb--EPA's Action Level for Lead

* Note--Where "A" and "B" are indicated, AEM collected two samples at each source area location: ("A") initial draw sample; and ("B") after a 30-second flush sample

**Inconclusive Sample Result; Resampling Conducted on 03/28/17

***Information provided by DeKalb County Watershed Management

ATTACHMENT A
AEM Field Sampling Forms

**DEKALB COUNTY SCHOOL DISTRICT
LEAD IN DRINKING WATER FIELD DATA SHEET**

FACILITY NAME: SAGAMORE HILLS ELEMENTARY FACILITY
 ADDRESS: 1865 Alderbrook Road Atlanta, GA, 30345

FACILITY ID: 5065

DATE	TIME	SAMPLE ID (Facility ID-Date-Location Type-Sequential #-Sample Type)	NEAREST ROOM	LOCATION (circle)	DESCRIPTION	SAMPLER INIT.
10/13/16	0459	5065 - 101316 - DF-005-A	12	In room Hallway	Elkay, Tall fountain on left	AD
10/13/16	0500	5065 - 101316 - DF-005-B	12	In room Hallway	Elkay, same as above	AD
10/13/16	0502	5065 - 101316 - DF-006-A	12	In room Hallway	Elkay, Short fountain on right	AD
10/13/16	0503	5065 - 101316 - DF-006-B	12	In room Hallway	same as above	AD
10/13/16	0513	5065 - 101316 - KS-004-A	10	In room Hallway	Faucet + Fountain combo Sampled from fountain	AD
10/13/16	0514	5065 - 101316 - KS-004-B	10	In room Hallway	Same as above	AD
10/13/16	0508	5065 - 101316 - KS-006-A	11	In room Hallway	Faucet + Fountain combo Sampled fountain.	AD
10/13/16	0509	5065 - 101316 - KS-006-B	11	In room Hallway	Same as above	AD
10/13/16	0523	5065 - 101316 - KS-003-A	8	In room Hallway	Faucet + Fountain combo sampled from fountain	AD
10/13/16	0524	5065 - 101316 - KS-003-B	8	In room Hallway	same as above	AD

LOCATION TYPE: AF = athletic field; CS = cafeteria sink; DF = drinking fountain; IM = ice maker; KS = kindergarten sink; RS = restroom sink; SC = service connection; TL = teachers' lounge. SAMPLE TYPE: A = initial draw; B = flush; C = duplicate

**DEKALB COUNTY SCHOOL DISTRICT
LEAD IN DRINKING WATER FIELD DATA SHEET**

FACILITY NAME: SAGAMORE HILLS ELEMENTARY FACILITY
 ADDRESS: 1865 Alderbrook Road Atlanta, GA, 30345

FACILITY ID: 5065

DATE	TIME	SAMPLE ID (Facility ID-Date-Location Type-Sequential #-Sample Type)	NEAREST ROOM	LOCATION (circle)	DESCRIPTION	SAMPLER INIT.
10/13/16	0519	5065 - 101316 - KS-005-A	9	In room Hallway	Faucet + Fountain Combo sampled from fountain	AA
10/13/16	0520	5065 - 101316 - KS-005-B	9	In room Hallway	Same as above	B
10/13/16	0528	5065 - 101316 - KS-002-A	6	In room Hallway	Faucet + Fountain Combo sampled from fountain	AA
10/13/16	0529	5065 - 101316 - KS-002-B	6	In room Hallway	Same as above	B
10/13/16	0533	5065 - 101316 - KS-001-A	4	In room Hallway	Faucet + Fountain Combo, Sampled Fountain	AA
10/13/16	0535	5065 - 101316 - KS-001-B	4	In room Hallway	Same as above	AA
10/13/16	0534	5065 - 101316 - KS-001-C	4	In room Hallway	Same as above INITIAL Duplicate	AA
10/13/16	0540	5065 - 101316 - TL-001-A	Teachers 4.4 Lounge	In room Hallway	ONLY Sink in room Faucet dripping on Arrival	AA
10/13/16	0541	5065 - 101316 - TL-001-B	4.4	In room Hallway	Same as above	AA
10/13/16		5065 - 101316 -		In room Hallway		

LOCATION TYPE: AF = athletic field; CS = cafeteria sink; DF = drinking fountain; IM = ice maker; KS = kindergarten sink; RS = restroom sink; SC = service connection; TL = teachers' lounge. SAMPLE TYPE: A = initial draw; B = flush; C = duplicate

**DEKALB COUNTY SCHOOL DISTRICT
LEAD IN DRINKING WATER FIELD DATA SHEET**

FACILITY NAME: SAGAMORE HILLS ELEMENTARY FACILITY
 ADDRESS: 1865 Alderbrook Road Atlanta, GA, 30345

FACILITY ID: 5065

DATE	TIME	SAMPLE ID (Facility ID-Date-Location Type-Sequential #-Sample Type)	NEAREST ROOM	LOCATION (circle)	DESCRIPTION	SAMPLER INIT.
10/13/16	0547	5065 - 101316 - DF-003-A	2	In room Hallway	Elkay, short fountain on right	AJ
10/13/16	0548	5065 - 101316 - DF-003-B	2	In room Hallway	Same as above	AJ
10/13/16	0551	5065 - 101316 - DF-004-A	2	In room Hallway	Elkay Elkay, tall fountain on left	AJ
10/13/16	0552	5065 - 101316 - DF-004-B	2	In room Hallway	Same as above	AJ
10/13/16	0613	5065 - 101316 - SC-001-A		In room Hallway	2 meters, sampled newer meter meter # 65315485 DeKalb Watershed sample ID-29	AJ
10/13/16		5065 - 101316 -		In room Hallway		
10/13/16		5065 - 101316 -		In room Hallway		
10/13/16		5065 - 101316 -		In room Hallway		
10/13/16		5065 - 101316 -		In room Hallway		
10/13/16		5065 - 101316 -		In room Hallway		

LOCATION TYPE: AF = athletic field; CS = cafeteria sink; DF = drinking fountain; IM = ice maker; KS = kindergarten sink; RS = restroom sink; SC = service connection; TL = teachers' lounge. SAMPLE TYPE: A = initial draw; B = flush; C = duplicate

**DEKALB COUNTY SCHOOL DISTRICT
LEAD IN DRINKING WATER FIELD DATA SHEET**

FACILITY NAME: SAGAMORE HILLS ELEMENTARY FACILITY
ADDRESS: 1865 Alderbrook Road Atlanta, GA, 30345

FACILITY ID: 5065

DATE	TIME	SAMPLE ID (Facility ID-Date-Location Type-Sequential #-Sample Type)	NEAREST ROOM	LOCATION (circle)	DESCRIPTION	SAMPLER INIT.
10/13/16	0501	5065 - 101316 - CS-001-A	Cafe/Kitchen	In room Hallway	Food prep next to IM	UH
10/13/16	0502	5065 - 101316 - CS-001-B	↓	In room Hallway	" "	UH
10/13/16	0457	5065 - 101316 - IM-001-A	↓	In room Hallway	prodigy plus	UH
10/13/16	0533	5065 - 101316 - DF-001-A	near Rm 16	In room Hallway	upper left Elkay Wall M.	UH
10/13/16	0534	5065 - 101316 - DF-001-B	" "	In room Hallway	" "	UH
10/13/16	0536	5065 - 101316 - DF-002-A	" "	In room Hallway	lower right Elkay Wall M.	UH
10/13/16	0537	5065 - 101316 - DF-002-B	" "	In room Hallway	" "	UH
10/13/16	0545	5065 - 101316 - DF-008-A	by Rm 21	In room Hallway	lower left Elkay wall mount.	UH
10/13/16	0546	5065 - 101316 - DF-008-B	" "	In room Hallway		UH
10/13/16		5065 - 101316 -		In room Hallway		

LOCATION TYPE: AF = athletic field; CS = cafeteria sink; DF = drinking fountain; IM = ice maker; KS = kindergarten sink; RS = restroom sink; SC = service connection; TL = teachers' lounge. SAMPLE TYPE: A = initial draw; B = flush; C = duplicate

**DEKALB COUNTY SCHOOL DISTRICT
LEAD IN DRINKING WATER FIELD DATA SHEET**

FACILITY NAME: SAGAMORE HILLS ELEMENTARY FACILITY
 ADDRESS: 1865 Alderbrook Road Atlanta, GA, 30345

FACILITY ID: 5065

DATE	TIME	SAMPLE ID (Facility ID-Date-Location Type-Sequential #-Sample Type)	NEAREST ROOM	LOCATION (circle)	DESCRIPTION	SAMPLER INIT.
10/13/16	0520	5065 - 101316 - DF-011-A	outside gym entrance	In room Hallway	upper right DF	LH
10/13/16	0521	5065 - 101316 - DF-011-B	↓	In room Hallway	" "	LH
10/13/16	0526	5065 - 101316 - DF-012-A	gym	In room Hallway	lower right Elkay wall mount	LH
10/13/16	0527	5065 - 101316 - DF-012-B	" "	In room Hallway	" "	LH
10/13/16	0529	5065 - 101316 - DF-013-A	" "	In room Hallway	upper left Elkay DF wall mount	LH
10/13/16	0530	5065 - 101316 - DF-013-B	" "	In room Hallway	" "	LH
10/13/16	0506	5065 - 101316 - DF-014-A	cafe	In room Hallway	upper left Elkay wall mount	LH
10/13/16	0507	5065 - 101316 - DF-014-B	↓	In room Hallway	" "	LH
10/13/16	0511	5065 - 101316 - DF-015-A	↓	In room Hallway	lower right Elkay w.m.	LH
10/13/16	0512	5065 - 101316 - DF-015-B	↓	In room Hallway	" "	LH

LOCATION TYPE: AF = athletic field; CS = cafeteria sink; DF = drinking fountain; IM = ice maker; KS = kindergarten sink; RS = restroom sink; SC = service connection; TL = teachers' lounge. SAMPLE TYPE: A = initial draw; B = flush; C = duplicate

**DEKALB COUNTY SCHOOL DISTRICT
LEAD IN DRINKING WATER FIELD DATA SHEET**

FACILITY NAME: SAGAMORE HILLS ELEMENTARY FACILITY
 ADDRESS: 1865 Alderbrook Road Atlanta, GA, 30345

FACILITY ID: 5065

DATE	TIME	SAMPLE ID (Facility ID-Date-Location Type-Sequential #-Sample Type)	NEAREST ROOM	LOCATION (circle)	DESCRIPTION	SAMPLER INIT.
10/13/16	0548	5065 - 101316 - DF-009-A	boy Rm 21	In room Hallway	upper right Elkay wall mount	UH
10/13/16	0549	5065 - 101316 - DF-009-B	" "	In room Hallway	" "	UH
10/13/16	0551	5065 - 101316 - DF-007-A	boy Rm 24	In room Hallway	single Elkay DF wall mount	UH
10/13/16	0552	5065 - 101316 - DF-007-B	" "	In room Hallway		UH
10/13/16	0553	5065 - 101316 - DF-007-C	" "	In room Hallway	flush cup	UH
10/13/16	0540	5065 - 101316 - RS-001-A	boy's RR across from 18	In room Hallway	far left sink	UH
10/13/16	0541	5065 - 101316 - RS-001-B	" "	In room Hallway	" "	UH
10/13/16	0518	5065 - 101316 - DF-010-A	outside gym entrance	In room Hallway	lower left DF	UH
10/13/16	0519	5065 - 101316 - DF-010-B	↓	In room Hallway	↓	UH
10/13/16		5065 - 101316 -		In room Hallway		

LOCATION TYPE: AF = athletic field; CS = cafeteria sink; DF = drinking fountain; IM = ice maker; KS = kindergarten sink; RS = restroom sink; SC = service connection; TL = teachers' lounge. SAMPLE TYPE: A = initial draw; B = flush; C = duplicate

**DEKALB COUNTY SCHOOL DISTRICT
LEAD IN DRINKING WATER FIELD DATA SHEET**

FACILITY NAME: SAGAMORE HILLS ELEMENTARY FACILITY
 ADDRESS: 1865 Alderbrook Road Atlanta, GA, 30345

FACILITY ID: 5065

DATE	TIME	SAMPLE ID (Facility ID-Date-Location Type-Sequential #-Sample Type)	NEAREST ROOM	LOCATION (circle)	DESCRIPTION	SAMPLER INIT.
3/28/17	4:45	5065 - 032817 - SC-001-A	Kitchen	In room Hallway Outside	to left of loading dock outside behind kitchen	A7
3/28/17		5065 - 032817 -		In room Hallway		
3/28/17		5065 - 032817 -		In room Hallway		
3/28/17		5065 - 032817 -		In room Hallway		
3/28/17		5065 - 032817 -		In room Hallway		
3/28/17		5065 - 032817 -		In room Hallway		
3/28/17		5065 - 032817 -		In room Hallway		
3/28/17		5065 - 032817 -		In room Hallway		
3/28/17		5065 - 032817 -		In room Hallway		
3/28/17		5065 - 032817 -		In room Hallway		

LOCATION TYPE: AF = athletic field; CS = cafeteria sink; DF = drinking fountain; IM = ice maker; KS = kindergarten sink; RS = restroom sink; SC = service connection; TL = teachers' lounge. SAMPLE TYPE: A = initial draw; B = flush; C = duplicate

ATTACHMENT B
AES Laboratory Analytical Report

Leona Miles

From: NoReply@aesatlanta.net
Sent: Thursday, October 27, 2016 3:10 PM
To: leona-miles@aem-net.com; tim-royer@aem-net.com
Subject: DCSD - 5065
Attachments: 1610A19_REPORT.pdf; 1610A19Invoice.pdf

Please see attached. If you have any questions or need further assistance please contact your project manager at 770-457-8177.

AES Reporting System

ANALYTICAL ENVIRONMENTAL SERVICES, INC.
3080 Presidential Drive ATLANTA, GA 30340
Tel: 770-457-8177 Fax: 770-457-8188
<http://www.aesatlanta.com>

NOTICE OF CONFIDENTIALITY: The information in this email and / or attachments may be legally privileged and is confidential information intended for the use of the individual or entity named in the email address. If the reader of this message is not the intended recipient, you are hereby notified that any use, dissemination, distribution, or copy of this email and / or attachments is strictly prohibited. If you have received this email in error, please notify Analytical Environmental Services Customer Service by telephone at (770) 457-8177 or by email at info@aesatlanta.com <<mailto:info@aesatlanta.com>> and delete the message. Thank you



October 27, 2016

Leona Miles
Atlanta Environmental Mgmt
2580 NE Expressway
Atlanta GA 30345

TEL: (404) 329-9006
FAX: (404) 329-2057

RE: DCSD - 5065

Dear Leona Miles:

Order No: 1610A19

Analytical Environmental Services, Inc. received 52 samples on 10/13/2016 8:16:00 AM for the analyses presented in following report.

No problems were encountered during the analyses. Additionally, all results for the associated Quality Control samples were within EPA and/or AES established limits. Any discrepancies associated with the analyses contained herein will be noted and submitted in the form of a project Case Narrative.

AES's accreditations are as follows:

- NELAC/Florida State Laboratory ID E87582 for analysis of Non-Potable Water, Solid & Chemical Materials, and Drinking Water Microbiology, effective 07/01/16-06/30/17.
- NELAC/Louisiana Agency Interest No. 100818 for or analysis of Non-Potable Water and Solid & Chemical Materials, effective 07/01/16-06/30/17.
- NELAC/Texas Certificate No. T104704509-16-6 for or analysis of Non-Potable Water and Solid & Chemical Materials, effective 03/01/16-02/28/17.
- AIHA-LAP, LLC Laboratory ID: 100671 for Industrial Hygiene samples (Organics, Metals, PCM Asbestos, Gravimetric), Environmental Lead (Paint, Soil, Dust Wipes, Air), and Environmental Microbiology (Fungal) Direct Examination, effective until 09/01/17.

Ioana Pacurar
Project Manager



ANALYTICAL ENVIRONMENTAL SERVICES, INC

3080 Presidential Drive, Atlanta GA 30340-3704

TEL.: (770) 457-8177 / TOLL-FREE (800) 972-4889 / FAX: (770) 457-8188

CHAIN OF CUSTODY

Work Order: 1610A19Date: 10/13/16 Page 1 of 4

COMPANY: Atlanta Environmental Management, Inc			ADDRESS: 2580 Northeast Expressway, NE Atlanta, GA 30345					ANALYSIS REQUESTED										Visit our website www.aesatlanta.com to check on the status of your results, place bottle orders, etc.		No # of Containers			
PHONE: (404) 329-9006			FAX: (404) 329-2057					Total Pb Method 200.8															
SAMPLED BY: <i>Andy Jensen</i>			SIGNATURE: <i>Andy Jensen</i>						PRESERVATION (See codes)										REMARKS				
#	SAMPLE ID	SAMPLED		Grab	Composite	Matrix (See codes)	I																
		DATE	TIME																				
1	5065-101316-DF-001-A ✓	10/13/2016	0533	X		DW	X																
2	5065-101316-DF-001-B ✓	10/13/2016	0534	X		DW	X																
3	5065-101316-DF-002-A ✓	10/13/2016	0536	X		DW	X																
4	5065-101316-DF-002-B ✓	10/13/2016	0537	X		DW	X																
5	5065-101316-DF-003-A ✓	10/13/2016	0547	X		DW	X																
6	5065-101316-DF-003-B ✓	10/13/2016	0548	X		DW	X																
7	5065-101316-DF-004-A ✓	10/13/2016	0551	X		DW	X																
8	5065-101316-DF-004-B ✓	10/13/2016	0552	X		DW	X																
9	5065-101316-DF-005-A ✓	10/13/2016	0549	X		DW	X																
10	5065-101316-DF-005-B ✓	10/13/2016	0500	X		DW	X																
11	5065-101316-DF-006-A ✓	10/13/2016	0502	X		DW	X																
12	5065-101316-DF-006-B ✓	10/13/2016	0503	X		DW	X																
13	5065-101316-DF-007-A ✓	10/13/2016	0551	X		DW	X																
14	5065-101316-DF-007-B ✓	10/13/2016	0552	X		DW	X																
15	5065-101316-DF-007-C ✓	10/13/2016	0553	X		DW	X																
RELINQUISHED BY		DATE/TIME		RECEIVED BY		DATE/TIME		PROJECT INFORMATION										RECEIPT					
1: <i>Andy Jensen</i>		10/13/16 0816		1: <i>Marianne Scurlock</i>		10/13/16 8:16 AM		PROJECT NAME: DCSD										Total # of Containers					
2:				2:				PROJECT #: 1561-1601										Turnaround Time Request <input type="radio"/> Standard 5 Business Days <input type="radio"/> 2 Business Day Rush <input type="radio"/> Next Business Day Rush <input type="radio"/> Same Day Rush (auth req.) <input checked="" type="radio"/> Other: 10 business Days					
3:				3:				SITE ADDRESS: 5065															
								SEND REPORT TO: Leona Miles and Tim Royer															
SPECIAL INSTRUCTIONS/COMMENTS:		SHIPMENT METHOD										INVOICE TO:											
Preserve at the Lab per protocol		OUT / / VIA:		IN / / VIA:		(IF DIFFERENT FROM ABOVE)		leona-miles@aem-net.com; tim-royer@aem-net.com										STATE PROGRAM (if any):					
		CLIENT FedEx UPS MAIL COURIER		GREYHOUND OTHER				QUOTE #: PO#:										E-mail? Y/N; Fax? Y/N					
DATA PACKAGE: I II III IV																							

SAMPLES RECEIVED AFTER 3PM OR SATURDAY ARE CONSIDERED AS RECEIVED ON THE NEXT BUSINESS DAY; IF NO TAT IS MARKED ON COC AES WILL PROCEED AS STANDARD TAT.

SAMPLES ARE DISPOSED OF 30 DAYS AFTER COMPLETION OF REPORT UNLESS OTHER ARRANGEMENTS ARE MADE.

MATRIX CODES: A = Air GW = Groundwater SE = Sediment SO = Soil SW = Surface Water DW = Drinking Water W = Water (Blanks) O = Other (specify)

PRESERVATIVE CODES: H+I = Hydrochloric acid + ice I = Ice only N = Nitric acid S+I = Sulfuric acid + ice S/M+I = Sodium Bisulfate/Methanol + ice O = Other (specify) NA = None



ANALYTICAL ENVIRONMENTAL SERVICES, INC

3080 Presidential Drive, Atlanta GA 30340-3704

TEL.: (770) 457-8177 / TOLL-FREE (800) 972-4889 / FAX: (770) 457-8188

CHAIN OF CUSTODY

Work Order: 1610A19

Date: 10/13/16 Page 2 of 4

COMPANY: Atlanta Environmental Management, Inc		ADDRESS: 2580 Northeast Expressway, NE Atlanta, GA 30345					ANALYSIS REQUESTED										Visit our website www.aesatlanta.com to check on the status of your results, place bottle orders, etc.		No # of Containers																																										
PHONE: (404) 329-9006		FAX: (404) 329-2057					<table border="1"> <tr> <td>Total Pb Method 200.8</td> <td></td><td></td><td></td><td></td><td></td><td></td><td></td><td></td><td></td><td></td><td></td><td></td><td></td><td></td><td></td><td></td><td></td><td></td><td></td><td></td> </tr> <tr> <td></td> <td></td><td></td><td></td><td></td><td></td><td></td><td></td><td></td><td></td><td></td><td></td><td></td><td></td><td></td><td></td><td></td><td></td><td></td><td></td><td></td> </tr> </table>													Total Pb Method 200.8																																									
Total Pb Method 200.8																																																													
SAMPLED BY: <i>Andy Jensen</i>		SIGNATURE: <i>Alvarez</i>					PRESERVATION (See codes)										REMARKS																																												
#	SAMPLE ID	SAMPLED		Grab	Composite	Matrix (See codes)																																																							
		DATE	TIME				I																																																						
1	5065-101316-DF-008-A ✓	10/13/2016	0545	X		DW	X																																																						
2	5065-101316-DF-008-B ✓	10/13/2016	0546	X		DW	X																																																						
3	5065-101316-DF-009-A ✓	10/13/2016	0548	X		DW	X																																																						
4	5065-101316-DF-009-B ✓	10/13/2016	0549	X		DW	X																																																						
5	5065-101316-DF-010-A ✓	10/13/2016	0518	X		DW	X																																																						
6	5065-101316-DF-010-B ✓	10/13/2016	0519	X		DW	X																																																						
7	5065-101316-DF-011-A ✓	10/13/2016	0520	X		DW	X																																																						
8	5065-101316-DF-011-B ✓	10/13/2016	0521	X		DW	X																																																						
9	5065-101316-DF-012-A ✓	10/13/2016	0526	X		DW	X																																																						
10	5065-101316-DF-012-B ✓	10/13/2016	0527	X		DW	X																																																						
11	5065-101316-DF-013-A ✓	10/13/2016	0529	X		DW	X																																																						
12	5065-101316-DF-013-B ✓	10/13/2016	0530	X		DW	X																																																						
13	5065-101316-KS-001-A ✓	10/13/2016	0533	X		DW	X																																																						
14	5065-101316-KS-001-B ✓	10/13/2016	0535	X		DW	X																																																						
15	5065-101316-KS-001-C ✓	10/13/2016	0534	X		DW	X																																																						
RELINQUISHED BY		DATE/TIME		RECEIVED BY		DATE/TIME		PROJECT INFORMATION										RECEIPT																																											
1: <i>Alvarez</i>		10/13/16 0816		1: <i>Mwami Pwari</i>		10/13/16 8:16 AM		PROJECT NAME: DCSD										Total # of Containers																																											
2:				2:				PROJECT #: 1561-1601										Turnaround Time Request																																											
3:				3:				SITE ADDRESS: 5065										<input type="radio"/> Standard 5 Business Days <input type="radio"/> 2 Business Day Rush <input type="radio"/> Next Business Day Rush <input type="radio"/> Same Day Rush (auth req.) <input checked="" type="radio"/> Other: 10 business Days																																											
SPECIAL INSTRUCTIONS/COMMENTS: Preserve at the Lab per protocol				SHIPMENT METHOD				INVOICE TO: (IF DIFFERENT FROM ABOVE) leona-miles@aem-net.com; tim-royer@aem-net.com										STATE PROGRAM (if any):																																											
				OUT / / VIA: IN (CLIENT) FedEx UPS MAIL COURIER GREYHOUND OTHER				QUOTE #:										E-mail? Y/N; Fax? Y/N DATA PACKAGE: I II III IV																																											
<p>SAMPLES RECEIVED AFTER 3PM OR SATURDAY ARE CONSIDERED AS RECEIVED ON THE NEXT BUSINESS DAY; IF NO TAT IS MARKED ON COC AES WILL PROCEED AS STANDARD TAT.</p> <p>SAMPLES ARE DISPOSED OF 30 DAYS AFTER COMPLETION OF REPORT UNLESS OTHER ARRANGEMENTS ARE MADE.</p>																																																													

MATRIX CODES: A = Air GW = Groundwater SE = Sediment SO = Soil SW = Surface Water DW = Drinking Water W = Water (Blanks) O = Other (specify)

PRESERVATIVE CODES: H+I = Hydrochloric acid + ice I = Ice only N = Nitric acid S+I = Sulfuric acid + ice S/M+I = Sodium Bisulfate/Methanol + ice O = Other (specify) NA = None



ANALYTICAL ENVIRONMENTAL SERVICES, INC

3080 Presidential Drive, Atlanta GA 30340-3704

TEL.: (770) 457-8177 / TOLL-FREE (800) 972-4889 / FAX: (770) 457-8188

CHAIN OF CUSTODY

Work Order: 1610A19

Date: 10/13/16 Page 4 of 4

Main body of the Chain of Custody form containing company details, sample data table, and project information.

MATRIX CODES: A = Air GW = Groundwater SE = Sediment SO = Soil SW = Surface Water DW=Drinking Water W = Water (Blanks) O = Other (specify)
PRESERVATIVE CODES: H+I = Hydrochloric acid + ice I = Ice only N = Nitric acid S+I = Sulfuric acid + ice S/M+I = Sodium Bisulfate/Methanol + ice O = Other (specify) NA = None

Analytical Environmental Services, Inc

Date: 27-Oct-16

Client: Atlanta Environmental Mgmt	Client Sample ID: 5065-101316-DF-001-A
Project Name: DCSD - 5065	Collection Date: 10/13/2016 5:33:00 AM
Lab ID: 1610A19-001	Matrix: Drinking Water

Analyses	Result	Reporting Limit	Qual	Units	BatchID	Dilution Factor	Date Analyzed	Analyst
Trace Elements by ICP/MS E200.8								
				(E200.2)				
Lead	BRL	1.00		ug/L	231481	1	10/21/2016 18:00	JR

Qualifiers:

- * Value exceeds maximum contaminant level
- BRL Below reporting limit
- H Holding times for preparation or analysis exceeded
- N Analyte not NELAC certified
- B Analyte detected in the associated method blank
- > Greater than Result value

- E Estimated (value above quantitation range)
- S Spike Recovery outside limits due to matrix
- Narr See case narrative
- NC Not confirmed
- < Less than Result value
- J Estimated value detected below Reporting Limit

Analytical Environmental Services, Inc

Date: 27-Oct-16

Client: Atlanta Environmental Mgmt	Client Sample ID: 5065-101316-DF-001-B
Project Name: DCSD - 5065	Collection Date: 10/13/2016 5:34:00 AM
Lab ID: 1610A19-002	Matrix: Drinking Water

Analyses	Result	Reporting Limit	Qual	Units	BatchID	Dilution Factor	Date Analyzed	Analyst
Trace Elements by ICP/MS E200.8					(E200.2)			
Lead	BRL	1.00		ug/L	231481	1	10/21/2016 18:16	JR

Qualifiers:

- * Value exceeds maximum contaminant level
- BRL Below reporting limit
- H Holding times for preparation or analysis exceeded
- N Analyte not NELAC certified
- B Analyte detected in the associated method blank
- > Greater than Result value

- E Estimated (value above quantitation range)
- S Spike Recovery outside limits due to matrix
- Narr See case narrative
- NC Not confirmed
- < Less than Result value
- J Estimated value detected below Reporting Limit

Analytical Environmental Services, Inc

Date: 27-Oct-16

Client: Atlanta Environmental Mgmt	Client Sample ID: 5065-101316-DF-002-A
Project Name: DCSD - 5065	Collection Date: 10/13/2016 5:36:00 AM
Lab ID: 1610A19-003	Matrix: Drinking Water

Analyses	Result	Reporting Limit	Qual	Units	BatchID	Dilution Factor	Date Analyzed	Analyst
Trace Elements by ICP/MS E200.8								
				(E200.2)				
Lead	BRL	1.00		ug/L	231481	1	10/21/2016 18:19	JR

Qualifiers:

- * Value exceeds maximum contaminant level
- BRL Below reporting limit
- H Holding times for preparation or analysis exceeded
- N Analyte not NELAC certified
- B Analyte detected in the associated method blank
- > Greater than Result value

- E Estimated (value above quantitation range)
- S Spike Recovery outside limits due to matrix
- Narr See case narrative
- NC Not confirmed
- < Less than Result value
- J Estimated value detected below Reporting Limit

Analytical Environmental Services, Inc

Date: 27-Oct-16

Client: Atlanta Environmental Mgmt	Client Sample ID: 5065-101316-DF-002-B
Project Name: DCSD - 5065	Collection Date: 10/13/2016 5:37:00 AM
Lab ID: 1610A19-004	Matrix: Drinking Water

Analyses	Result	Reporting Limit	Qual	Units	BatchID	Dilution Factor	Date Analyzed	Analyst
Trace Elements by ICP/MS E200.8					(E200.2)			
Lead	BRL	1.00		ug/L	231481	1	10/21/2016 18:22	JR

Qualifiers:

- * Value exceeds maximum contaminant level
- BRL Below reporting limit
- H Holding times for preparation or analysis exceeded
- N Analyte not NELAC certified
- B Analyte detected in the associated method blank
- > Greater than Result value

- E Estimated (value above quantitation range)
- S Spike Recovery outside limits due to matrix
- Narr See case narrative
- NC Not confirmed
- < Less than Result value
- J Estimated value detected below Reporting Limit

Analytical Environmental Services, Inc

Date: 27-Oct-16

Client: Atlanta Environmental Mgmt	Client Sample ID: 5065-101316-DF-003-A
Project Name: DCSD - 5065	Collection Date: 10/13/2016 5:47:00 AM
Lab ID: 1610A19-005	Matrix: Drinking Water

Analyses	Result	Reporting Limit	Qual	Units	BatchID	Dilution Factor	Date Analyzed	Analyst
Trace Elements by ICP/MS E200.8					(E200.2)			
Lead	BRL	1.00		ug/L	231481	1	10/21/2016 18:31	JR

Qualifiers:

- * Value exceeds maximum contaminant level
- BRL Below reporting limit
- H Holding times for preparation or analysis exceeded
- N Analyte not NELAC certified
- B Analyte detected in the associated method blank
- > Greater than Result value

- E Estimated (value above quantitation range)
- S Spike Recovery outside limits due to matrix
- Narr See case narrative
- NC Not confirmed
- < Less than Result value
- J Estimated value detected below Reporting Limit

Analytical Environmental Services, Inc

Date: 27-Oct-16

Client: Atlanta Environmental Mgmt	Client Sample ID: 5065-101316-DF-003-B
Project Name: DCSD - 5065	Collection Date: 10/13/2016 5:48:00 AM
Lab ID: 1610A19-006	Matrix: Drinking Water

Analyses	Result	Reporting Limit	Qual	Units	BatchID	Dilution Factor	Date Analyzed	Analyst
Trace Elements by ICP/MS E200.8					(E200.2)			
Lead	BRL	1.00		ug/L	231481	1	10/21/2016 18:34	JR

Qualifiers:

- * Value exceeds maximum contaminant level
- BRL Below reporting limit
- H Holding times for preparation or analysis exceeded
- N Analyte not NELAC certified
- B Analyte detected in the associated method blank
- > Greater than Result value

- E Estimated (value above quantitation range)
- S Spike Recovery outside limits due to matrix
- Narr See case narrative
- NC Not confirmed
- < Less than Result value
- J Estimated value detected below Reporting Limit

Analytical Environmental Services, Inc

Date: 27-Oct-16

Client: Atlanta Environmental Mgmt	Client Sample ID: 5065-101316-DF-004-A
Project Name: DCSD - 5065	Collection Date: 10/13/2016 5:51:00 AM
Lab ID: 1610A19-007	Matrix: Drinking Water

Analyses	Result	Reporting Limit	Qual	Units	BatchID	Dilution Factor	Date Analyzed	Analyst
Trace Elements by ICP/MS E200.8					(E200.2)			
Lead	BRL	1.00		ug/L	231481	1	10/21/2016 18:37	JR

Qualifiers:

- * Value exceeds maximum contaminant level
- BRL Below reporting limit
- H Holding times for preparation or analysis exceeded
- N Analyte not NELAC certified
- B Analyte detected in the associated method blank
- > Greater than Result value

- E Estimated (value above quantitation range)
- S Spike Recovery outside limits due to matrix
- Narr See case narrative
- NC Not confirmed
- < Less than Result value
- J Estimated value detected below Reporting Limit

Analytical Environmental Services, Inc

Date: 27-Oct-16

Client: Atlanta Environmental Mgmt	Client Sample ID: 5065-101316-DF-004-B
Project Name: DCSD - 5065	Collection Date: 10/13/2016 5:52:00 AM
Lab ID: 1610A19-008	Matrix: Drinking Water

Analyses	Result	Reporting Limit	Qual	Units	BatchID	Dilution Factor	Date Analyzed	Analyst
Trace Elements by ICP/MS E200.8					(E200.2)			
Lead	BRL	1.00		ug/L	231481	1	10/21/2016 18:40	JR

Qualifiers:

- * Value exceeds maximum contaminant level
- BRL Below reporting limit
- H Holding times for preparation or analysis exceeded
- N Analyte not NELAC certified
- B Analyte detected in the associated method blank
- > Greater than Result value

- E Estimated (value above quantitation range)
- S Spike Recovery outside limits due to matrix
- Narr See case narrative
- NC Not confirmed
- < Less than Result value
- J Estimated value detected below Reporting Limit

Analytical Environmental Services, Inc

Date: 27-Oct-16

Client: Atlanta Environmental Mgmt	Client Sample ID: 5065-101316-DF-005-A
Project Name: DCSD - 5065	Collection Date: 10/13/2016 5:49:00 AM
Lab ID: 1610A19-009	Matrix: Drinking Water

Analyses	Result	Reporting Limit	Qual	Units	BatchID	Dilution Factor	Date Analyzed	Analyst
Trace Elements by ICP/MS E200.8					(E200.2)			
Lead	BRL	1.00		ug/L	231481	1	10/21/2016 18:43	JR

Qualifiers:

- * Value exceeds maximum contaminant level
- BRL Below reporting limit
- H Holding times for preparation or analysis exceeded
- N Analyte not NELAC certified
- B Analyte detected in the associated method blank
- > Greater than Result value

- E Estimated (value above quantitation range)
- S Spike Recovery outside limits due to matrix
- Narr See case narrative
- NC Not confirmed
- < Less than Result value
- J Estimated value detected below Reporting Limit

Analytical Environmental Services, Inc

Date: 27-Oct-16

Client: Atlanta Environmental Mgmt	Client Sample ID: 5065-101316-DF-005-B
Project Name: DCSD - 5065	Collection Date: 10/13/2016 5:00:00 AM
Lab ID: 1610A19-010	Matrix: Drinking Water

Analyses	Result	Reporting Limit	Qual	Units	BatchID	Dilution Factor	Date Analyzed	Analyst
Trace Elements by ICP/MS E200.8					(E200.2)			
Lead	BRL	1.00		ug/L	231481	1	10/21/2016 18:46	JR

Qualifiers:

- * Value exceeds maximum contaminant level
- BRL Below reporting limit
- H Holding times for preparation or analysis exceeded
- N Analyte not NELAC certified
- B Analyte detected in the associated method blank
- > Greater than Result value

- E Estimated (value above quantitation range)
- S Spike Recovery outside limits due to matrix
- Narr See case narrative
- NC Not confirmed
- < Less than Result value
- J Estimated value detected below Reporting Limit

Analytical Environmental Services, Inc

Date: 27-Oct-16

Client: Atlanta Environmental Mgmt	Client Sample ID: 5065-101316-DF-006-A
Project Name: DCSD - 5065	Collection Date: 10/13/2016 5:02:00 AM
Lab ID: 1610A19-011	Matrix: Drinking Water

Analyses	Result	Reporting Limit	Qual	Units	BatchID	Dilution Factor	Date Analyzed	Analyst
Trace Elements by ICP/MS E200.8					(E200.2)			
Lead	BRL	1.00		ug/L	231481	1	10/21/2016 18:10	JR

Qualifiers:

- * Value exceeds maximum contaminant level
- BRL Below reporting limit
- H Holding times for preparation or analysis exceeded
- N Analyte not NELAC certified
- B Analyte detected in the associated method blank
- > Greater than Result value

- E Estimated (value above quantitation range)
- S Spike Recovery outside limits due to matrix
- Narr See case narrative
- NC Not confirmed
- < Less than Result value
- J Estimated value detected below Reporting Limit

Analytical Environmental Services, Inc

Date: 27-Oct-16

Client: Atlanta Environmental Mgmt	Client Sample ID: 5065-101316-DF-006-B
Project Name: DCSD - 5065	Collection Date: 10/13/2016 5:03:00 AM
Lab ID: 1610A19-012	Matrix: Drinking Water

Analyses	Result	Reporting Limit	Qual	Units	BatchID	Dilution Factor	Date Analyzed	Analyst
Trace Elements by ICP/MS E200.8					(E200.2)			
Lead	BRL	1.00		ug/L	231481	1	10/21/2016 18:49	JR

Qualifiers:

- * Value exceeds maximum contaminant level
- BRL Below reporting limit
- H Holding times for preparation or analysis exceeded
- N Analyte not NELAC certified
- B Analyte detected in the associated method blank
- > Greater than Result value

- E Estimated (value above quantitation range)
- S Spike Recovery outside limits due to matrix
- Narr See case narrative
- NC Not confirmed
- < Less than Result value
- J Estimated value detected below Reporting Limit

Analytical Environmental Services, Inc

Date: 27-Oct-16

Client: Atlanta Environmental Mgmt	Client Sample ID: 5065-101316-DF-007-A
Project Name: DCSD - 5065	Collection Date: 10/13/2016 5:51:00 AM
Lab ID: 1610A19-013	Matrix: Drinking Water

Analyses	Result	Reporting Limit	Qual	Units	BatchID	Dilution Factor	Date Analyzed	Analyst
Trace Elements by ICP/MS E200.8								
				(E200.2)				
Lead	BRL	1.00		ug/L	231481	1	10/21/2016 18:52	JR

Qualifiers:

- * Value exceeds maximum contaminant level
- BRL Below reporting limit
- H Holding times for preparation or analysis exceeded
- N Analyte not NELAC certified
- B Analyte detected in the associated method blank
- > Greater than Result value

- E Estimated (value above quantitation range)
- S Spike Recovery outside limits due to matrix
- Narr See case narrative
- NC Not confirmed
- < Less than Result value
- J Estimated value detected below Reporting Limit

Analytical Environmental Services, Inc

Date: 27-Oct-16

Client: Atlanta Environmental Mgmt	Client Sample ID: 5065-101316-DF-007-B
Project Name: DCSD - 5065	Collection Date: 10/13/2016 5:52:00 AM
Lab ID: 1610A19-014	Matrix: Drinking Water

Analyses	Result	Reporting Limit	Qual	Units	BatchID	Dilution Factor	Date Analyzed	Analyst
Trace Elements by ICP/MS E200.8					(E200.2)			
Lead	BRL	1.00		ug/L	231481	1	10/21/2016 18:55	JR

Qualifiers:

- * Value exceeds maximum contaminant level
- BRL Below reporting limit
- H Holding times for preparation or analysis exceeded
- N Analyte not NELAC certified
- B Analyte detected in the associated method blank
- > Greater than Result value

- E Estimated (value above quantitation range)
- S Spike Recovery outside limits due to matrix
- Narr See case narrative
- NC Not confirmed
- < Less than Result value
- J Estimated value detected below Reporting Limit

Analytical Environmental Services, Inc

Date: 27-Oct-16

Client: Atlanta Environmental Mgmt	Client Sample ID: 5065-101316-DF-007-C
Project Name: DCSD - 5065	Collection Date: 10/13/2016 5:53:00 AM
Lab ID: 1610A19-015	Matrix: Drinking Water

Analyses	Result	Reporting Limit	Qual	Units	BatchID	Dilution Factor	Date Analyzed	Analyst
Trace Elements by ICP/MS E200.8					(E200.2)			
Lead	BRL	1.00		ug/L	231481	1	10/21/2016 18:58	JR

Qualifiers:

- * Value exceeds maximum contaminant level
- BRL Below reporting limit
- H Holding times for preparation or analysis exceeded
- N Analyte not NELAC certified
- B Analyte detected in the associated method blank
- > Greater than Result value

- E Estimated (value above quantitation range)
- S Spike Recovery outside limits due to matrix
- Narr See case narrative
- NC Not confirmed
- < Less than Result value
- J Estimated value detected below Reporting Limit

Analytical Environmental Services, Inc

Date: 27-Oct-16

Client: Atlanta Environmental Mgmt	Client Sample ID: 5065-101316-DF-008-A
Project Name: DCSD - 5065	Collection Date: 10/13/2016 5:45:00 AM
Lab ID: 1610A19-016	Matrix: Drinking Water

Analyses	Result	Reporting Limit	Qual	Units	BatchID	Dilution Factor	Date Analyzed	Analyst
Trace Elements by ICP/MS E200.8					(E200.2)			
Lead	BRL	1.00		ug/L	231481	1	10/21/2016 19:07	JR

Qualifiers:

- * Value exceeds maximum contaminant level
- BRL Below reporting limit
- H Holding times for preparation or analysis exceeded
- N Analyte not NELAC certified
- B Analyte detected in the associated method blank
- > Greater than Result value

- E Estimated (value above quantitation range)
- S Spike Recovery outside limits due to matrix
- Narr See case narrative
- NC Not confirmed
- < Less than Result value
- J Estimated value detected below Reporting Limit

Analytical Environmental Services, Inc

Date: 27-Oct-16

Client: Atlanta Environmental Mgmt	Client Sample ID: 5065-101316-DF-008-B
Project Name: DCSD - 5065	Collection Date: 10/13/2016 5:46:00 AM
Lab ID: 1610A19-017	Matrix: Drinking Water

Analyses	Result	Reporting Limit	Qual	Units	BatchID	Dilution Factor	Date Analyzed	Analyst
Trace Elements by ICP/MS E200.8					(E200.2)			
Lead	BRL	1.00		ug/L	231481	1	10/21/2016 19:10	JR

Qualifiers:

- * Value exceeds maximum contaminant level
- BRL Below reporting limit
- H Holding times for preparation or analysis exceeded
- N Analyte not NELAC certified
- B Analyte detected in the associated method blank
- > Greater than Result value

- E Estimated (value above quantitation range)
- S Spike Recovery outside limits due to matrix
- Narr See case narrative
- NC Not confirmed
- < Less than Result value
- J Estimated value detected below Reporting Limit

Analytical Environmental Services, Inc

Date: 27-Oct-16

Client: Atlanta Environmental Mgmt	Client Sample ID: 5065-101316-DF-009-A
Project Name: DCSD - 5065	Collection Date: 10/13/2016 5:48:00 AM
Lab ID: 1610A19-018	Matrix: Drinking Water

Analyses	Result	Reporting Limit	Qual	Units	BatchID	Dilution Factor	Date Analyzed	Analyst
Trace Elements by ICP/MS E200.8					(E200.2)			
Lead	BRL	1.00		ug/L	231481	1	10/21/2016 19:13	JR

Qualifiers:

- * Value exceeds maximum contaminant level
- BRL Below reporting limit
- H Holding times for preparation or analysis exceeded
- N Analyte not NELAC certified
- B Analyte detected in the associated method blank
- > Greater than Result value

- E Estimated (value above quantitation range)
- S Spike Recovery outside limits due to matrix
- Narr See case narrative
- NC Not confirmed
- < Less than Result value
- J Estimated value detected below Reporting Limit

Analytical Environmental Services, Inc

Date: 27-Oct-16

Client: Atlanta Environmental Mgmt	Client Sample ID: 5065-101316-DF-009-B
Project Name: DCSD - 5065	Collection Date: 10/13/2016 5:49:00 AM
Lab ID: 1610A19-019	Matrix: Drinking Water

Analyses	Result	Reporting Limit	Qual	Units	BatchID	Dilution Factor	Date Analyzed	Analyst
Trace Elements by ICP/MS E200.8					(E200.2)			
Lead	BRL	1.00		ug/L	231481	1	10/21/2016 19:16	JR

Qualifiers:

- * Value exceeds maximum contaminant level
- BRL Below reporting limit
- H Holding times for preparation or analysis exceeded
- N Analyte not NELAC certified
- B Analyte detected in the associated method blank
- > Greater than Result value

- E Estimated (value above quantitation range)
- S Spike Recovery outside limits due to matrix
- Narr See case narrative
- NC Not confirmed
- < Less than Result value
- J Estimated value detected below Reporting Limit

Analytical Environmental Services, Inc

Date: 27-Oct-16

Client: Atlanta Environmental Mgmt	Client Sample ID: 5065-101316-DF-010-A
Project Name: DCSD - 5065	Collection Date: 10/13/2016 5:18:00 AM
Lab ID: 1610A19-020	Matrix: Drinking Water

Analyses	Result	Reporting Limit	Qual	Units	BatchID	Dilution Factor	Date Analyzed	Analyst
Trace Elements by ICP/MS E200.8					(E200.2)			
Lead	1.58	1.00		ug/L	231481	1	10/21/2016 19:19	JR

Qualifiers:

- * Value exceeds maximum contaminant level
- BRL Below reporting limit
- H Holding times for preparation or analysis exceeded
- N Analyte not NELAC certified
- B Analyte detected in the associated method blank
- > Greater than Result value

- E Estimated (value above quantitation range)
- S Spike Recovery outside limits due to matrix
- Narr See case narrative
- NC Not confirmed
- < Less than Result value
- J Estimated value detected below Reporting Limit

Analytical Environmental Services, Inc

Date: 27-Oct-16

Client: Atlanta Environmental Mgmt	Client Sample ID: 5065-101316-DF-010-B
Project Name: DCSD - 5065	Collection Date: 10/13/2016 5:19:00 AM
Lab ID: 1610A19-021	Matrix: Drinking Water

Analyses	Result	Reporting Limit	Qual	Units	BatchID	Dilution Factor	Date Analyzed	Analyst
Trace Elements by ICP/MS E200.8					(E200.2)			
Lead	1.41	1.00		ug/L	231489	1	10/21/2016 19:28	JR

Qualifiers:

- * Value exceeds maximum contaminant level
- BRL Below reporting limit
- H Holding times for preparation or analysis exceeded
- N Analyte not NELAC certified
- B Analyte detected in the associated method blank
- > Greater than Result value

- E Estimated (value above quantitation range)
- S Spike Recovery outside limits due to matrix
- Narr See case narrative
- NC Not confirmed
- < Less than Result value
- J Estimated value detected below Reporting Limit

Analytical Environmental Services, Inc

Date: 27-Oct-16

Client: Atlanta Environmental Mgmt	Client Sample ID: 5065-101316-DF-011-A
Project Name: DCSD - 5065	Collection Date: 10/13/2016 5:20:00 AM
Lab ID: 1610A19-022	Matrix: Drinking Water

Analyses	Result	Reporting Limit	Qual	Units	BatchID	Dilution Factor	Date Analyzed	Analyst
Trace Elements by ICP/MS E200.8					(E200.2)			
Lead	3.29	1.00		ug/L	231489	1	10/21/2016 19:49	JR

Qualifiers:

- * Value exceeds maximum contaminant level
- BRL Below reporting limit
- H Holding times for preparation or analysis exceeded
- N Analyte not NELAC certified
- B Analyte detected in the associated method blank
- > Greater than Result value

- E Estimated (value above quantitation range)
- S Spike Recovery outside limits due to matrix
- Narr See case narrative
- NC Not confirmed
- < Less than Result value
- J Estimated value detected below Reporting Limit

Analytical Environmental Services, Inc

Date: 27-Oct-16

Client: Atlanta Environmental Mgmt	Client Sample ID: 5065-101316-DF-011-B
Project Name: DCSD - 5065	Collection Date: 10/13/2016 5:21:00 AM
Lab ID: 1610A19-023	Matrix: Drinking Water

Analyses	Result	Reporting Limit	Qual	Units	BatchID	Dilution Factor	Date Analyzed	Analyst
Trace Elements by ICP/MS E200.8					(E200.2)			
Lead	BRL	1.00		ug/L	231489	1	10/21/2016 19:53	JR

Qualifiers:

- * Value exceeds maximum contaminant level
- BRL Below reporting limit
- H Holding times for preparation or analysis exceeded
- N Analyte not NELAC certified
- B Analyte detected in the associated method blank
- > Greater than Result value

- E Estimated (value above quantitation range)
- S Spike Recovery outside limits due to matrix
- Narr See case narrative
- NC Not confirmed
- < Less than Result value
- J Estimated value detected below Reporting Limit

Analytical Environmental Services, Inc

Date: 27-Oct-16

Client: Atlanta Environmental Mgmt	Client Sample ID: 5065-101316-DF-012-A
Project Name: DCSD - 5065	Collection Date: 10/13/2016 5:26:00 AM
Lab ID: 1610A19-024	Matrix: Drinking Water

Analyses	Result	Reporting Limit	Qual	Units	BatchID	Dilution Factor	Date Analyzed	Analyst
Trace Elements by ICP/MS E200.8					(E200.2)			
Lead	BRL	1.00		ug/L	231489	1	10/21/2016 19:56	JR

Qualifiers:

- * Value exceeds maximum contaminant level
- BRL Below reporting limit
- H Holding times for preparation or analysis exceeded
- N Analyte not NELAC certified
- B Analyte detected in the associated method blank
- > Greater than Result value

- E Estimated (value above quantitation range)
- S Spike Recovery outside limits due to matrix
- Narr See case narrative
- NC Not confirmed
- < Less than Result value
- J Estimated value detected below Reporting Limit

Analytical Environmental Services, Inc

Date: 27-Oct-16

Client: Atlanta Environmental Mgmt	Client Sample ID: 5065-101316-DF-012-B
Project Name: DCSD - 5065	Collection Date: 10/13/2016 5:27:00 AM
Lab ID: 1610A19-025	Matrix: Drinking Water

Analyses	Result	Reporting Limit	Qual	Units	BatchID	Dilution Factor	Date Analyzed	Analyst
Trace Elements by ICP/MS E200.8					(E200.2)			
Lead	BRL	1.00		ug/L	231489	1	10/21/2016 19:59	JR

Qualifiers:

- * Value exceeds maximum contaminant level
- BRL Below reporting limit
- H Holding times for preparation or analysis exceeded
- N Analyte not NELAC certified
- B Analyte detected in the associated method blank
- > Greater than Result value

- E Estimated (value above quantitation range)
- S Spike Recovery outside limits due to matrix
- Narr See case narrative
- NC Not confirmed
- < Less than Result value
- J Estimated value detected below Reporting Limit

Analytical Environmental Services, Inc

Date: 27-Oct-16

Client: Atlanta Environmental Mgmt	Client Sample ID: 5065-101316-DF-013-A
Project Name: DCSD - 5065	Collection Date: 10/13/2016 5:29:00 AM
Lab ID: 1610A19-026	Matrix: Drinking Water

Analyses	Result	Reporting Limit	Qual	Units	BatchID	Dilution Factor	Date Analyzed	Analyst
Trace Elements by ICP/MS E200.8					(E200.2)			
Lead	BRL	1.00		ug/L	231489	1	10/21/2016 20:02	JR

Qualifiers:

- * Value exceeds maximum contaminant level
- BRL Below reporting limit
- H Holding times for preparation or analysis exceeded
- N Analyte not NELAC certified
- B Analyte detected in the associated method blank
- > Greater than Result value

- E Estimated (value above quantitation range)
- S Spike Recovery outside limits due to matrix
- Narr See case narrative
- NC Not confirmed
- < Less than Result value
- J Estimated value detected below Reporting Limit

Analytical Environmental Services, Inc

Date: 27-Oct-16

Client: Atlanta Environmental Mgmt	Client Sample ID: 5065-101316-DF-013-B
Project Name: DCSD - 5065	Collection Date: 10/13/2016 5:30:00 AM
Lab ID: 1610A19-027	Matrix: Drinking Water

Analyses	Result	Reporting Limit	Qual	Units	BatchID	Dilution Factor	Date Analyzed	Analyst
Trace Elements by ICP/MS E200.8					(E200.2)			
Lead	BRL	1.00		ug/L	231489	1	10/21/2016 20:05	JR

Qualifiers:

- * Value exceeds maximum contaminant level
- BRL Below reporting limit
- H Holding times for preparation or analysis exceeded
- N Analyte not NELAC certified
- B Analyte detected in the associated method blank
- > Greater than Result value

- E Estimated (value above quantitation range)
- S Spike Recovery outside limits due to matrix
- Narr See case narrative
- NC Not confirmed
- < Less than Result value
- J Estimated value detected below Reporting Limit

Analytical Environmental Services, Inc

Date: 27-Oct-16

Client: Atlanta Environmental Mgmt	Client Sample ID: 5065-101316-KS-001-A
Project Name: DCSD - 5065	Collection Date: 10/13/2016 5:33:00 AM
Lab ID: 1610A19-028	Matrix: Drinking Water

Analyses	Result	Reporting Limit	Qual	Units	BatchID	Dilution Factor	Date Analyzed	Analyst
Trace Elements by ICP/MS E200.8					(E200.2)			
Lead	BRL	1.00		ug/L	231489	1	10/21/2016 20:08	JR

Qualifiers:

- * Value exceeds maximum contaminant level
- BRL Below reporting limit
- H Holding times for preparation or analysis exceeded
- N Analyte not NELAC certified
- B Analyte detected in the associated method blank
- > Greater than Result value

- E Estimated (value above quantitation range)
- S Spike Recovery outside limits due to matrix
- Narr See case narrative
- NC Not confirmed
- < Less than Result value
- J Estimated value detected below Reporting Limit

Analytical Environmental Services, Inc

Date: 27-Oct-16

Client: Atlanta Environmental Mgmt	Client Sample ID: 5065-101316-KS-001-B
Project Name: DCSD - 5065	Collection Date: 10/13/2016 5:35:00 AM
Lab ID: 1610A19-029	Matrix: Drinking Water

Analyses	Result	Reporting Limit	Qual	Units	BatchID	Dilution Factor	Date Analyzed	Analyst
Trace Elements by ICP/MS E200.8					(E200.2)			
Lead	BRL	1.00		ug/L	231489	1	10/21/2016 20:11	JR

Qualifiers:

- * Value exceeds maximum contaminant level
- BRL Below reporting limit
- H Holding times for preparation or analysis exceeded
- N Analyte not NELAC certified
- B Analyte detected in the associated method blank
- > Greater than Result value

- E Estimated (value above quantitation range)
- S Spike Recovery outside limits due to matrix
- Narr See case narrative
- NC Not confirmed
- < Less than Result value
- J Estimated value detected below Reporting Limit

Analytical Environmental Services, Inc

Date: 27-Oct-16

Client: Atlanta Environmental Mgmt	Client Sample ID: 5065-101316-KS-001-C
Project Name: DCSD - 5065	Collection Date: 10/13/2016 5:34:00 AM
Lab ID: 1610A19-030	Matrix: Drinking Water

Analyses	Result	Reporting Limit	Qual	Units	BatchID	Dilution Factor	Date Analyzed	Analyst
Trace Elements by ICP/MS E200.8					(E200.2)			
Lead	BRL	1.00		ug/L	231489	1	10/21/2016 20:20	JR

Qualifiers:

- * Value exceeds maximum contaminant level
- BRL Below reporting limit
- H Holding times for preparation or analysis exceeded
- N Analyte not NELAC certified
- B Analyte detected in the associated method blank
- > Greater than Result value

- E Estimated (value above quantitation range)
- S Spike Recovery outside limits due to matrix
- Narr See case narrative
- NC Not confirmed
- < Less than Result value
- J Estimated value detected below Reporting Limit

Analytical Environmental Services, Inc

Date: 27-Oct-16

Client: Atlanta Environmental Mgmt	Client Sample ID: 5065-101316-KS-002-A
Project Name: DCSD - 5065	Collection Date: 10/13/2016 5:28:00 AM
Lab ID: 1610A19-031	Matrix: Drinking Water

Analyses	Result	Reporting Limit	Qual	Units	BatchID	Dilution Factor	Date Analyzed	Analyst
Trace Elements by ICP/MS E200.8					(E200.2)			
Lead	BRL	1.00		ug/L	231489	1	10/21/2016 19:43	JR

Qualifiers:

- * Value exceeds maximum contaminant level
- BRL Below reporting limit
- H Holding times for preparation or analysis exceeded
- N Analyte not NELAC certified
- B Analyte detected in the associated method blank
- > Greater than Result value

- E Estimated (value above quantitation range)
- S Spike Recovery outside limits due to matrix
- Narr See case narrative
- NC Not confirmed
- < Less than Result value
- J Estimated value detected below Reporting Limit

Analytical Environmental Services, Inc

Date: 27-Oct-16

Client: Atlanta Environmental Mgmt	Client Sample ID: 5065-101316-KS-002-B
Project Name: DCSD - 5065	Collection Date: 10/13/2016 5:29:00 AM
Lab ID: 1610A19-032	Matrix: Drinking Water

Analyses	Result	Reporting Limit	Qual	Units	BatchID	Dilution Factor	Date Analyzed	Analyst
Trace Elements by ICP/MS E200.8					(E200.2)			
Lead	BRL	1.00		ug/L	231489	1	10/21/2016 20:23	JR

Qualifiers:

- * Value exceeds maximum contaminant level
- BRL Below reporting limit
- H Holding times for preparation or analysis exceeded
- N Analyte not NELAC certified
- B Analyte detected in the associated method blank
- > Greater than Result value

- E Estimated (value above quantitation range)
- S Spike Recovery outside limits due to matrix
- Narr See case narrative
- NC Not confirmed
- < Less than Result value
- J Estimated value detected below Reporting Limit

Analytical Environmental Services, Inc

Date: 27-Oct-16

Client: Atlanta Environmental Mgmt	Client Sample ID: 5065-101316-KS-003-A
Project Name: DCSD - 5065	Collection Date: 10/13/2016 5:23:00 AM
Lab ID: 1610A19-033	Matrix: Drinking Water

Analyses	Result	Reporting Limit	Qual	Units	BatchID	Dilution Factor	Date Analyzed	Analyst
Trace Elements by ICP/MS E200.8					(E200.2)			
Lead	BRL	1.00		ug/L	231489	1	10/21/2016 20:26	JR

Qualifiers:

- * Value exceeds maximum contaminant level
- BRL Below reporting limit
- H Holding times for preparation or analysis exceeded
- N Analyte not NELAC certified
- B Analyte detected in the associated method blank
- > Greater than Result value

- E Estimated (value above quantitation range)
- S Spike Recovery outside limits due to matrix
- Narr See case narrative
- NC Not confirmed
- < Less than Result value
- J Estimated value detected below Reporting Limit

Analytical Environmental Services, Inc

Date: 27-Oct-16

Client: Atlanta Environmental Mgmt	Client Sample ID: 5065-101316-KS-003-B
Project Name: DCSD - 5065	Collection Date: 10/13/2016 5:24:00 AM
Lab ID: 1610A19-034	Matrix: Drinking Water

Analyses	Result	Reporting Limit	Qual	Units	BatchID	Dilution Factor	Date Analyzed	Analyst
Trace Elements by ICP/MS E200.8					(E200.2)			
Lead	BRL	1.00		ug/L	231489	1	10/21/2016 20:29	JR

Qualifiers:

- * Value exceeds maximum contaminant level
- BRL Below reporting limit
- H Holding times for preparation or analysis exceeded
- N Analyte not NELAC certified
- B Analyte detected in the associated method blank
- > Greater than Result value

- E Estimated (value above quantitation range)
- S Spike Recovery outside limits due to matrix
- Narr See case narrative
- NC Not confirmed
- < Less than Result value
- J Estimated value detected below Reporting Limit

Analytical Environmental Services, Inc

Date: 27-Oct-16

Client: Atlanta Environmental Mgmt	Client Sample ID: 5065-101316-KS-004-A
Project Name: DCSD - 5065	Collection Date: 10/13/2016 5:13:00 AM
Lab ID: 1610A19-035	Matrix: Drinking Water

Analyses	Result	Reporting Limit	Qual	Units	BatchID	Dilution Factor	Date Analyzed	Analyst
Trace Elements by ICP/MS E200.8					(E200.2)			
Lead	2.63	1.00		ug/L	231489	1	10/21/2016 20:32	JR

Qualifiers:

- * Value exceeds maximum contaminant level
- BRL Below reporting limit
- H Holding times for preparation or analysis exceeded
- N Analyte not NELAC certified
- B Analyte detected in the associated method blank
- > Greater than Result value

- E Estimated (value above quantitation range)
- S Spike Recovery outside limits due to matrix
- Narr See case narrative
- NC Not confirmed
- < Less than Result value
- J Estimated value detected below Reporting Limit

Analytical Environmental Services, Inc

Date: 27-Oct-16

Client: Atlanta Environmental Mgmt	Client Sample ID: 5065-101316-KS-004-B
Project Name: DCSD - 5065	Collection Date: 10/13/2016 5:14:00 AM
Lab ID: 1610A19-036	Matrix: Drinking Water

Analyses	Result	Reporting Limit	Qual	Units	BatchID	Dilution Factor	Date Analyzed	Analyst
Trace Elements by ICP/MS E200.8					(E200.2)			
Lead	BRL	1.00		ug/L	231489	1	10/21/2016 20:35	JR

Qualifiers:

- * Value exceeds maximum contaminant level
- BRL Below reporting limit
- H Holding times for preparation or analysis exceeded
- N Analyte not NELAC certified
- B Analyte detected in the associated method blank
- > Greater than Result value

- E Estimated (value above quantitation range)
- S Spike Recovery outside limits due to matrix
- Narr See case narrative
- NC Not confirmed
- < Less than Result value
- J Estimated value detected below Reporting Limit

Analytical Environmental Services, Inc

Date: 27-Oct-16

Client: Atlanta Environmental Mgmt	Client Sample ID: 5065-101316-KS-005-A
Project Name: DCSD - 5065	Collection Date: 10/13/2016 5:19:00 AM
Lab ID: 1610A19-037	Matrix: Drinking Water

Analyses	Result	Reporting Limit	Qual	Units	BatchID	Dilution Factor	Date Analyzed	Analyst
Trace Elements by ICP/MS E200.8					(E200.2)			
Lead	BRL	1.00		ug/L	231489	1	10/21/2016 20:38	JR

Qualifiers:

- * Value exceeds maximum contaminant level
- BRL Below reporting limit
- H Holding times for preparation or analysis exceeded
- N Analyte not NELAC certified
- B Analyte detected in the associated method blank
- > Greater than Result value

- E Estimated (value above quantitation range)
- S Spike Recovery outside limits due to matrix
- Narr See case narrative
- NC Not confirmed
- < Less than Result value
- J Estimated value detected below Reporting Limit

Analytical Environmental Services, Inc

Date: 27-Oct-16

Client: Atlanta Environmental Mgmt	Client Sample ID: 5065-101316-KS-005-B
Project Name: DCSD - 5065	Collection Date: 10/13/2016 5:20:00 AM
Lab ID: 1610A19-038	Matrix: Drinking Water

Analyses	Result	Reporting Limit	Qual	Units	BatchID	Dilution Factor	Date Analyzed	Analyst
Trace Elements by ICP/MS E200.8					(E200.2)			
Lead	BRL	1.00		ug/L	231489	1	10/21/2016 20:41	JR

Qualifiers:

- * Value exceeds maximum contaminant level
- BRL Below reporting limit
- H Holding times for preparation or analysis exceeded
- N Analyte not NELAC certified
- B Analyte detected in the associated method blank
- > Greater than Result value

- E Estimated (value above quantitation range)
- S Spike Recovery outside limits due to matrix
- Narr See case narrative
- NC Not confirmed
- < Less than Result value
- J Estimated value detected below Reporting Limit

Analytical Environmental Services, Inc

Date: 27-Oct-16

Client: Atlanta Environmental Mgmt	Client Sample ID: 5065-101316-KS-006-A
Project Name: DCSD - 5065	Collection Date: 10/13/2016 5:08:00 AM
Lab ID: 1610A19-039	Matrix: Drinking Water

Analyses	Result	Reporting Limit	Qual	Units	BatchID	Dilution Factor	Date Analyzed	Analyst
Trace Elements by ICP/MS E200.8					(E200.2)			
Lead	BRL	1.00		ug/L	231489	1	10/21/2016 20:44	JR

Qualifiers:

- * Value exceeds maximum contaminant level
- BRL Below reporting limit
- H Holding times for preparation or analysis exceeded
- N Analyte not NELAC certified
- B Analyte detected in the associated method blank
- > Greater than Result value

- E Estimated (value above quantitation range)
- S Spike Recovery outside limits due to matrix
- Narr See case narrative
- NC Not confirmed
- < Less than Result value
- J Estimated value detected below Reporting Limit

Analytical Environmental Services, Inc

Date: 27-Oct-16

Client: Atlanta Environmental Mgmt	Client Sample ID: 5065-101316-KS-006-B
Project Name: DCSD - 5065	Collection Date: 10/13/2016 5:09:00 AM
Lab ID: 1610A19-040	Matrix: Drinking Water

Analyses	Result	Reporting Limit	Qual	Units	BatchID	Dilution Factor	Date Analyzed	Analyst
Trace Elements by ICP/MS E200.8					(E200.2)			
Lead	BRL	1.00		ug/L	231489	1	10/21/2016 20:47	JR

Qualifiers:

- * Value exceeds maximum contaminant level
- BRL Below reporting limit
- H Holding times for preparation or analysis exceeded
- N Analyte not NELAC certified
- B Analyte detected in the associated method blank
- > Greater than Result value

- E Estimated (value above quantitation range)
- S Spike Recovery outside limits due to matrix
- Narr See case narrative
- NC Not confirmed
- < Less than Result value
- J Estimated value detected below Reporting Limit

Analytical Environmental Services, Inc

Date: 27-Oct-16

Client: Atlanta Environmental Mgmt	Client Sample ID: 5065-101316-RS-001-A
Project Name: DCSD - 5065	Collection Date: 10/13/2016 5:40:00 AM
Lab ID: 1610A19-041	Matrix: Drinking Water

Analyses	Result	Reporting Limit	Qual	Units	BatchID	Dilution Factor	Date Analyzed	Analyst
Trace Elements by ICP/MS E200.8					(E200.2)			
Lead	BRL	1.00		ug/L	231664	1	10/25/2016 17:06	JR

Qualifiers:

- * Value exceeds maximum contaminant level
- BRL Below reporting limit
- H Holding times for preparation or analysis exceeded
- N Analyte not NELAC certified
- B Analyte detected in the associated method blank
- > Greater than Result value

- E Estimated (value above quantitation range)
- S Spike Recovery outside limits due to matrix
- Narr See case narrative
- NC Not confirmed
- < Less than Result value
- J Estimated value detected below Reporting Limit

Analytical Environmental Services, Inc

Date: 27-Oct-16

Client: Atlanta Environmental Mgmt	Client Sample ID: 5065-101316-RS-001-B
Project Name: DCSD - 5065	Collection Date: 10/13/2016 5:41:00 AM
Lab ID: 1610A19-042	Matrix: Drinking Water

Analyses	Result	Reporting Limit	Qual	Units	BatchID	Dilution Factor	Date Analyzed	Analyst
Trace Elements by ICP/MS E200.8					(E200.2)			
Lead	BRL	1.00		ug/L	231664	1	10/25/2016 17:27	JR

Qualifiers:

- * Value exceeds maximum contaminant level
- BRL Below reporting limit
- H Holding times for preparation or analysis exceeded
- N Analyte not NELAC certified
- B Analyte detected in the associated method blank
- > Greater than Result value

- E Estimated (value above quantitation range)
- S Spike Recovery outside limits due to matrix
- Narr See case narrative
- NC Not confirmed
- < Less than Result value
- J Estimated value detected below Reporting Limit

Analytical Environmental Services, Inc

Date: 27-Oct-16

Client: Atlanta Environmental Mgmt	Client Sample ID: 5065-101316-TL-001-A
Project Name: DCSD - 5065	Collection Date: 10/13/2016 5:40:00 AM
Lab ID: 1610A19-043	Matrix: Drinking Water

Analyses	Result	Reporting Limit	Qual	Units	BatchID	Dilution Factor	Date Analyzed	Analyst
Trace Elements by ICP/MS E200.8					(E200.2)			
Lead	BRL	1.00		ug/L	231664	1	10/25/2016 17:30	JR

Qualifiers:

- * Value exceeds maximum contaminant level
- BRL Below reporting limit
- H Holding times for preparation or analysis exceeded
- N Analyte not NELAC certified
- B Analyte detected in the associated method blank
- > Greater than Result value

- E Estimated (value above quantitation range)
- S Spike Recovery outside limits due to matrix
- Narr See case narrative
- NC Not confirmed
- < Less than Result value
- J Estimated value detected below Reporting Limit

Analytical Environmental Services, Inc

Date: 27-Oct-16

Client: Atlanta Environmental Mgmt	Client Sample ID: 5065-101316-TL-001-B
Project Name: DCSD - 5065	Collection Date: 10/13/2016 5:41:00 AM
Lab ID: 1610A19-044	Matrix: Drinking Water

Analyses	Result	Reporting Limit	Qual	Units	BatchID	Dilution Factor	Date Analyzed	Analyst
Trace Elements by ICP/MS E200.8					(E200.2)			
Lead	BRL	1.00		ug/L	231664	1	10/25/2016 17:33	JR

Qualifiers:

- * Value exceeds maximum contaminant level
- BRL Below reporting limit
- H Holding times for preparation or analysis exceeded
- N Analyte not NELAC certified
- B Analyte detected in the associated method blank
- > Greater than Result value

- E Estimated (value above quantitation range)
- S Spike Recovery outside limits due to matrix
- Narr See case narrative
- NC Not confirmed
- < Less than Result value
- J Estimated value detected below Reporting Limit

Analytical Environmental Services, Inc

Date: 27-Oct-16

Client: Atlanta Environmental Mgmt	Client Sample ID: 5065-101316-CS-001-A
Project Name: DCSD - 5065	Collection Date: 10/13/2016 5:01:00 AM
Lab ID: 1610A19-045	Matrix: Drinking Water

Analyses	Result	Reporting Limit	Qual	Units	BatchID	Dilution Factor	Date Analyzed	Analyst
Trace Elements by ICP/MS E200.8								
				(E200.2)				
Lead	BRL	1.00		ug/L	231664	1	10/25/2016 17:36	JR

Qualifiers:

- * Value exceeds maximum contaminant level
- BRL Below reporting limit
- H Holding times for preparation or analysis exceeded
- N Analyte not NELAC certified
- B Analyte detected in the associated method blank
- > Greater than Result value

- E Estimated (value above quantitation range)
- S Spike Recovery outside limits due to matrix
- Narr See case narrative
- NC Not confirmed
- < Less than Result value
- J Estimated value detected below Reporting Limit

Analytical Environmental Services, Inc

Date: 27-Oct-16

Client: Atlanta Environmental Mgmt	Client Sample ID: 5065-101316-CS-001-B
Project Name: DCSD - 5065	Collection Date: 10/13/2016 5:02:00 AM
Lab ID: 1610A19-046	Matrix: Drinking Water

Analyses	Result	Reporting Limit	Qual	Units	BatchID	Dilution Factor	Date Analyzed	Analyst
Trace Elements by ICP/MS E200.8								
				(E200.2)				
Lead	BRL	1.00		ug/L	231664	1	10/25/2016 17:39	JR

Qualifiers:

- * Value exceeds maximum contaminant level
- BRL Below reporting limit
- H Holding times for preparation or analysis exceeded
- N Analyte not NELAC certified
- B Analyte detected in the associated method blank
- > Greater than Result value

- E Estimated (value above quantitation range)
- S Spike Recovery outside limits due to matrix
- Narr See case narrative
- NC Not confirmed
- < Less than Result value
- J Estimated value detected below Reporting Limit

Analytical Environmental Services, Inc

Date: 27-Oct-16

Client: Atlanta Environmental Mgmt	Client Sample ID: 5065-101316-IM-001-A
Project Name: DCSD - 5065	Collection Date: 10/13/2016 4:57:00 AM
Lab ID: 1610A19-047	Matrix: Drinking Water

Analyses	Result	Reporting Limit	Qual	Units	BatchID	Dilution Factor	Date Analyzed	Analyst
Trace Elements by ICP/MS E200.8								
				(E200.2)				
Lead	BRL	1.00		ug/L	231664	1	10/25/2016 17:42	JR

Qualifiers:

- * Value exceeds maximum contaminant level
- BRL Below reporting limit
- H Holding times for preparation or analysis exceeded
- N Analyte not NELAC certified
- B Analyte detected in the associated method blank
- > Greater than Result value

- E Estimated (value above quantitation range)
- S Spike Recovery outside limits due to matrix
- Narr See case narrative
- NC Not confirmed
- < Less than Result value
- J Estimated value detected below Reporting Limit

Analytical Environmental Services, Inc

Date: 27-Oct-16

Client: Atlanta Environmental Mgmt	Client Sample ID: 5065-101316-SC-001-A
Project Name: DCSD - 5065	Collection Date: 10/13/2016 6:13:00 AM
Lab ID: 1610A19-048	Matrix: Drinking Water

Analyses	Result	Reporting Limit	Qual	Units	BatchID	Dilution Factor	Date Analyzed	Analyst
Trace Elements by ICP/MS E200.8					(E200.2)			
Lead	27.8	1.00		ug/L	231664	1	10/25/2016 17:45	JR

Qualifiers:

- * Value exceeds maximum contaminant level
- BRL Below reporting limit
- H Holding times for preparation or analysis exceeded
- N Analyte not NELAC certified
- B Analyte detected in the associated method blank
- > Greater than Result value

- E Estimated (value above quantitation range)
- S Spike Recovery outside limits due to matrix
- Narr See case narrative
- NC Not confirmed
- < Less than Result value
- J Estimated value detected below Reporting Limit

Analytical Environmental Services, Inc

Date: 27-Oct-16

Client: Atlanta Environmental Mgmt	Client Sample ID: 5065-101316-DF-014-A
Project Name: DCSD - 5065	Collection Date: 10/13/2016 5:06:00 AM
Lab ID: 1610A19-049	Matrix: Drinking Water

Analyses	Result	Reporting Limit	Qual	Units	BatchID	Dilution Factor	Date Analyzed	Analyst
Trace Elements by ICP/MS E200.8								
				(E200.2)				
Lead	BRL	1.00		ug/L	231664	1	10/25/2016 17:48	JR

Qualifiers:

- * Value exceeds maximum contaminant level
- BRL Below reporting limit
- H Holding times for preparation or analysis exceeded
- N Analyte not NELAC certified
- B Analyte detected in the associated method blank
- > Greater than Result value

- E Estimated (value above quantitation range)
- S Spike Recovery outside limits due to matrix
- Narr See case narrative
- NC Not confirmed
- < Less than Result value
- J Estimated value detected below Reporting Limit

Analytical Environmental Services, Inc

Date: 27-Oct-16

Client: Atlanta Environmental Mgmt	Client Sample ID: 5065-101316-DF-014-B
Project Name: DCSD - 5065	Collection Date: 10/13/2016 5:07:00 AM
Lab ID: 1610A19-050	Matrix: Drinking Water

Analyses	Result	Reporting Limit	Qual	Units	BatchID	Dilution Factor	Date Analyzed	Analyst
Trace Elements by ICP/MS E200.8								
				(E200.2)				
Lead	BRL	1.00		ug/L	231664	1	10/25/2016 17:52	JR

Qualifiers:

- * Value exceeds maximum contaminant level
- BRL Below reporting limit
- H Holding times for preparation or analysis exceeded
- N Analyte not NELAC certified
- B Analyte detected in the associated method blank
- > Greater than Result value

- E Estimated (value above quantitation range)
- S Spike Recovery outside limits due to matrix
- Narr See case narrative
- NC Not confirmed
- < Less than Result value
- J Estimated value detected below Reporting Limit

Analytical Environmental Services, Inc

Date: 27-Oct-16

Client: Atlanta Environmental Mgmt	Client Sample ID: 5065-101316-DF-015-A
Project Name: DCSD - 5065	Collection Date: 10/13/2016 5:11:00 AM
Lab ID: 1610A19-051	Matrix: Drinking Water

Analyses	Result	Reporting Limit	Qual	Units	BatchID	Dilution Factor	Date Analyzed	Analyst
Trace Elements by ICP/MS E200.8					(E200.2)			
Lead	BRL	1.00		ug/L	231664	1	10/25/2016 17:15	JR

Qualifiers:

- * Value exceeds maximum contaminant level
- BRL Below reporting limit
- H Holding times for preparation or analysis exceeded
- N Analyte not NELAC certified
- B Analyte detected in the associated method blank
- > Greater than Result value

- E Estimated (value above quantitation range)
- S Spike Recovery outside limits due to matrix
- Narr See case narrative
- NC Not confirmed
- < Less than Result value
- J Estimated value detected below Reporting Limit

Analytical Environmental Services, Inc

Date: 27-Oct-16

Client: Atlanta Environmental Mgmt	Client Sample ID: 5065-101316-DF-015-B
Project Name: DCSD - 5065	Collection Date: 10/13/2016 5:12:00 AM
Lab ID: 1610A19-052	Matrix: Drinking Water

Analyses	Result	Reporting Limit	Qual	Units	BatchID	Dilution Factor	Date Analyzed	Analyst
Trace Elements by ICP/MS E200.8								
				(E200.2)				
Lead	BRL	1.00		ug/L	231664	1	10/25/2016 18:01	JR

Qualifiers:

- * Value exceeds maximum contaminant level
- BRL Below reporting limit
- H Holding times for preparation or analysis exceeded
- N Analyte not NELAC certified
- B Analyte detected in the associated method blank
- > Greater than Result value

- E Estimated (value above quantitation range)
- S Spike Recovery outside limits due to matrix
- Narr See case narrative
- NC Not confirmed
- < Less than Result value
- J Estimated value detected below Reporting Limit

Analytical Environmental Services, Inc.

Sample/Cooler Receipt Checklist

Client Atlanta Env. MGMT

Work Order Number 1610A19

Checklist completed by [Signature] Date 10/13/2014

Carrier name: FedEx ___ UPS ___ Courier ___ Client [checked] US Mail ___ Other ___

Shipping container/cooler in good condition? Yes [checked] No ___ Not Present ___

Custody seals intact on shipping container/cooler? Yes [checked] No ___ Not Present ___

Custody seals intact on sample bottles? Yes ___ No ___ Not Present [checked]

Container/Temp Blank temperature in compliance? (0°≤6°C)* Yes [checked] No ___

Cooler #1 2.3°C Cooler #2 ___ Cooler #3 ___ Cooler #4 ___ Cooler#5 ___ Cooler #6 ___

Chain of custody present? Yes [checked] No ___

Chain of custody signed when relinquished and received? Yes [checked] No ___

Chain of custody agrees with sample labels? Yes [checked] No ___

Samples in proper container/bottle? Yes [checked] No ___

Sample containers intact? Yes [checked] No ___

Sufficient sample volume for indicated test? Yes [checked] No ___

All samples received within holding time? Yes [checked] No ___

Was TAT marked on the COC? Yes [checked] No ___

Proceed with Standard TAT as per project history? Yes ___ No ___ Not Applicable [checked]

Water - VOA vials have zero headspace? No VOA vials submitted [checked] Yes ___ No ___

Water - pH acceptable upon receipt? Yes ___ No [checked] Not Applicable ___

Adjusted? ___ Checked by [Signature]

Sample Condition: Good [checked] Other(Explain) ___

(For diffusive samples or AIHA lead) Is a known blank included? Yes ___ No [checked]

See Case Narrative for resolution of the Non-Conformance.

* Samples do not have to comply with the given range for certain parameters.

Client: Atlanta Environmental Mgmt
Project Name: DCSD - 5065
Workorder: 1610A19

ANALYTICAL QC SUMMARY REPORT

BatchID: 231481

Sample ID: MB-231481	Client ID:	Units: ug/L	Prep Date: 10/21/2016	Run No: 328141							
SampleType: MBLK	TestCode: Trace Elements by ICP/MS E200.8	BatchID: 231481	Analysis Date: 10/21/2016	Seq No: 7118850							
Analyte	Result	RPT Limit	SPK value	SPK Ref Val	%REC	Low Limit	High Limit	RPD Ref Val	%RPD	RPD Limit	Qual

Lead BRL 1.00

Sample ID: LCS-231481	Client ID:	Units: ug/L	Prep Date: 10/21/2016	Run No: 328141							
SampleType: LCS	TestCode: Trace Elements by ICP/MS E200.8	BatchID: 231481	Analysis Date: 10/21/2016	Seq No: 7118851							
Analyte	Result	RPT Limit	SPK value	SPK Ref Val	%REC	Low Limit	High Limit	RPD Ref Val	%RPD	RPD Limit	Qual

Lead 97.25 1.00 100.0 97.2 85 115

Sample ID: 1610A19-001AMS	Client ID: 5065-101316-DF-001-A	Units: ug/L	Prep Date: 10/21/2016	Run No: 328141							
SampleType: MS	TestCode: Trace Elements by ICP/MS E200.8	BatchID: 231481	Analysis Date: 10/21/2016	Seq No: 7118853							
Analyte	Result	RPT Limit	SPK value	SPK Ref Val	%REC	Low Limit	High Limit	RPD Ref Val	%RPD	RPD Limit	Qual

Lead 95.58 1.00 100.0 95.6 70 130

Sample ID: 1610A19-011AMS	Client ID: 5065-101316-DF-006-A	Units: ug/L	Prep Date: 10/21/2016	Run No: 328141							
SampleType: MS	TestCode: Trace Elements by ICP/MS E200.8	BatchID: 231481	Analysis Date: 10/21/2016	Seq No: 7118856							
Analyte	Result	RPT Limit	SPK value	SPK Ref Val	%REC	Low Limit	High Limit	RPD Ref Val	%RPD	RPD Limit	Qual

Lead 96.66 1.00 100.0 96.7 70 130

Sample ID: 1610A19-001AMSD	Client ID: 5065-101316-DF-001-A	Units: ug/L	Prep Date: 10/21/2016	Run No: 328141							
SampleType: MSD	TestCode: Trace Elements by ICP/MS E200.8	BatchID: 231481	Analysis Date: 10/21/2016	Seq No: 7118854							
Analyte	Result	RPT Limit	SPK value	SPK Ref Val	%REC	Low Limit	High Limit	RPD Ref Val	%RPD	RPD Limit	Qual

Lead 95.93 1.00 100.0 95.9 70 130 95.58 0.363 20

Qualifiers: > Greater than Result value < Less than Result value B Analyte detected in the associated method blank
 BRL Below reporting limit E Estimated (value above quantitation range) H Holding times for preparation or analysis exceeded
 J Estimated value detected below Reporting Limit N Analyte not NELAC certified R RPD outside limits due to matrix
 Rpt Lim Reporting Limit S Spike Recovery outside limits due to matrix

Client: Atlanta Environmental Mgmt
Project Name: DCSD - 5065
Workorder: 1610A19

ANALYTICAL QC SUMMARY REPORT

BatchID: 231489

Sample ID: MB-231489	Client ID:	Units: ug/L	Prep Date: 10/21/2016	Run No: 328142							
SampleType: MBLK	TestCode: Trace Elements by ICP/MS E200.8	BatchID: 231489	Analysis Date: 10/21/2016	Seq No: 7118889							
Analyte	Result	RPT Limit	SPK value	SPK Ref Val	%REC	Low Limit	High Limit	RPD Ref Val	%RPD	RPD Limit	Qual

Lead BRL 1.00

Sample ID: LCS-231489	Client ID:	Units: ug/L	Prep Date: 10/21/2016	Run No: 328142							
SampleType: LCS	TestCode: Trace Elements by ICP/MS E200.8	BatchID: 231489	Analysis Date: 10/21/2016	Seq No: 7118890							
Analyte	Result	RPT Limit	SPK value	SPK Ref Val	%REC	Low Limit	High Limit	RPD Ref Val	%RPD	RPD Limit	Qual

Lead 97.87 1.00 100.0 97.9 85 115

Sample ID: 1610A19-021AMS	Client ID: 5065-101316-DF-010-B	Units: ug/L	Prep Date: 10/21/2016	Run No: 328142							
SampleType: MS	TestCode: Trace Elements by ICP/MS E200.8	BatchID: 231489	Analysis Date: 10/21/2016	Seq No: 7118892							
Analyte	Result	RPT Limit	SPK value	SPK Ref Val	%REC	Low Limit	High Limit	RPD Ref Val	%RPD	RPD Limit	Qual

Lead 95.38 1.00 100.0 1.413 94.0 70 130

Sample ID: 1610A19-031AMS	Client ID: 5065-101316-KS-002-A	Units: ug/L	Prep Date: 10/21/2016	Run No: 328142							
SampleType: MS	TestCode: Trace Elements by ICP/MS E200.8	BatchID: 231489	Analysis Date: 10/21/2016	Seq No: 7118897							
Analyte	Result	RPT Limit	SPK value	SPK Ref Val	%REC	Low Limit	High Limit	RPD Ref Val	%RPD	RPD Limit	Qual

Lead 96.24 1.00 100.0 96.2 70 130

Sample ID: 1610A19-021AMSD	Client ID: 5065-101316-DF-010-B	Units: ug/L	Prep Date: 10/21/2016	Run No: 328142							
SampleType: MSD	TestCode: Trace Elements by ICP/MS E200.8	BatchID: 231489	Analysis Date: 10/21/2016	Seq No: 7118893							
Analyte	Result	RPT Limit	SPK value	SPK Ref Val	%REC	Low Limit	High Limit	RPD Ref Val	%RPD	RPD Limit	Qual

Lead 99.15 1.00 100.0 1.413 97.7 70 130 95.38 3.88 20

Qualifiers: > Greater than Result value < Less than Result value B Analyte detected in the associated method blank
 BRL Below reporting limit E Estimated (value above quantitation range) H Holding times for preparation or analysis exceeded
 J Estimated value detected below Reporting Limit N Analyte not NELAC certified R RPD outside limits due to matrix
 Rpt Lim Reporting Limit S Spike Recovery outside limits due to matrix

Client: Atlanta Environmental Mgmt
Project Name: DCSD - 5065
Workorder: 1610A19

ANALYTICAL QC SUMMARY REPORT

BatchID: 231664

Sample ID: MB-231664	Client ID:	Units: ug/L	Prep Date: 10/25/2016	Run No: 328242							
SampleType: MBLK	TestCode: Trace Elements by ICP/MS E200.8	BatchID: 231664	Analysis Date: 10/25/2016	Seq No: 7121276							
Analyte	Result	RPT Limit	SPK value	SPK Ref Val	%REC	Low Limit	High Limit	RPD Ref Val	%RPD	RPD Limit	Qual

Lead BRL 1.00

Sample ID: LCS-231664	Client ID:	Units: ug/L	Prep Date: 10/25/2016	Run No: 328242							
SampleType: LCS	TestCode: Trace Elements by ICP/MS E200.8	BatchID: 231664	Analysis Date: 10/25/2016	Seq No: 7121277							
Analyte	Result	RPT Limit	SPK value	SPK Ref Val	%REC	Low Limit	High Limit	RPD Ref Val	%RPD	RPD Limit	Qual

Lead 103.1 1.00 100.0 103 85 115

Sample ID: 1610A19-041AMS	Client ID: 5065-101316-RS-001-A	Units: ug/L	Prep Date: 10/25/2016	Run No: 328242							
SampleType: MS	TestCode: Trace Elements by ICP/MS E200.8	BatchID: 231664	Analysis Date: 10/25/2016	Seq No: 7121279							
Analyte	Result	RPT Limit	SPK value	SPK Ref Val	%REC	Low Limit	High Limit	RPD Ref Val	%RPD	RPD Limit	Qual

Lead 99.88 1.00 100.0 0.07230 99.8 70 130

Sample ID: 1610A19-051AMS	Client ID: 5065-101316-DF-015-A	Units: ug/L	Prep Date: 10/25/2016	Run No: 328242							
SampleType: MS	TestCode: Trace Elements by ICP/MS E200.8	BatchID: 231664	Analysis Date: 10/25/2016	Seq No: 7121284							
Analyte	Result	RPT Limit	SPK value	SPK Ref Val	%REC	Low Limit	High Limit	RPD Ref Val	%RPD	RPD Limit	Qual

Lead 101.2 1.00 100.0 0.07949 101 70 130

Sample ID: 1610A19-041AMSD	Client ID: 5065-101316-RS-001-A	Units: ug/L	Prep Date: 10/25/2016	Run No: 328242							
SampleType: MSD	TestCode: Trace Elements by ICP/MS E200.8	BatchID: 231664	Analysis Date: 10/25/2016	Seq No: 7121280							
Analyte	Result	RPT Limit	SPK value	SPK Ref Val	%REC	Low Limit	High Limit	RPD Ref Val	%RPD	RPD Limit	Qual

Lead 105.6 1.00 100.0 0.07230 106 70 130 99.88 5.58 20

Qualifiers: > Greater than Result value < Less than Result value B Analyte detected in the associated method blank
 BRL Below reporting limit E Estimated (value above quantitation range) H Holding times for preparation or analysis exceeded
 J Estimated value detected below Reporting Limit N Analyte not NELAC certified R RPD outside limits due to matrix
 Rpt Lim Reporting Limit S Spike Recovery outside limits due to matrix

Leona Miles

From: NoReply@aesatlanta.net
Sent: Tuesday, April 11, 2017 10:44 AM
To: leona-miles@aem-net.com; tim-royer@aem-net.com
Subject: DCSD - 5065
Attachments: 1703O11_REPORT.pdf; 1703O11Invoice.pdf

Please see attached. If you have any questions or need further assistance please contact your project manager at 770-457-8177.

AES Reporting System

ANALYTICAL ENVIRONMENTAL SERVICES, INC.
3080 Presidential Drive ATLANTA, GA 30340
Tel:770-457-8177 Fax:770-457-8188
<http://www.aesatlanta.com>

NOTICE OF CONFIDENTIALITY: The information in this email and / or attachments may be legally privileged and is confidential information intended for the use of the individual or entity named in the email address. If the reader of this message is not the intended recipient, you are hereby notified that any use, dissemination, distribution, or copy of this email and / or attachments is strictly prohibited. If you have received this email in error, please notify Analytical Environmental Services Customer Service by telephone at (770) 457-8177 or by email at info@aesatlanta.com <<mailto:info@aesatlanta.com>> and delete the message. Thank you



ANALYTICAL ENVIRONMENTAL SERVICES, INC.

April 11, 2017

Leona Miles
Atlanta Environmental Mgmt
2580 NE Expressway
Atlanta GA 30345

TEL: (404) 329-9006
FAX: (404) 329-2057

RE: DCSD - 5065

Dear Leona Miles:

Order No: 1703O11

Analytical Environmental Services, Inc. received 1 samples on 3/28/2017 8:04:00 AM for the analyses presented in following report.

No problems were encountered during the analyses. Additionally, all results for the associated Quality Control samples were within EPA and/or AES established limits. Any discrepancies associated with the analyses contained herein will be noted and submitted in the form of a project Case Narrative.

AES's accreditations are as follows:

- NELAC/Florida State Laboratory ID E87582 for analysis of Non-Potable Water, Solid & Chemical Materials, and Drinking Water Microbiology, effective 07/01/16-06/30/17.
- NELAC/Louisiana Agency Interest No. 100818 for or analysis of Non-Potable Water and Solid & Chemical Materials, effective 07/01/16-06/30/17.
- AIHA-LAP, LLC Laboratory ID: 100671 for Industrial Hygiene samples (Organics, Metals, PCM Asbestos, Gravimetric), Environmental Lead (Paint, Soil, Dust Wipes, Air), and Environmental Microbiology (Fungal) Direct Examination, effective until 09/01/17.

These results relate only to the items tested. This report may only be reproduced in full.

Ioana Pacurar
Project Manager



ANALYTICAL ENVIRONMENTAL SERVICES, INC

3080 Presidential Drive, Atlanta GA 30340-3704
TEL.: (770) 457-8177 / TOLL-FREE (800) 972-4889 / FAX: (770) 457-8188

CHAIN OF CUSTODY

Work Order: 1703011

Date: 3/28/17 Page 1 of 1

COMPANY: Atlanta Environmental Management, Inc
ADDRESS: 2580 Northeast Expressway, NE Atlanta, GA 30345
PHONE: 404 329-9006
FAX: 404 329-2057
SAMPLED BY: SIGNATURE: [Blank]

ANALYSIS REQUESTED

Visit our website
www.aesatlanta.com
to check on the status of
your results, place bottle
orders, etc.

No # of Containers

#	SAMPLE ID	SAMPLED		Grab	Composite	Matrix (See codes)	PRESERVATION (See codes)										REMARKS				
		DATE	TIME																		
1	5065-032817-SC-001-A	3/28/17	0445	X		DW	X														1
2																					
3																					
4																					
5																					
6																					
7																					
8																					
9																					
10																					
11																					
12																					
13																					
14																					

RELINQUISHED BY 1: [Signature]	DATE/TIME 3/28/17 0804	RECEIVED BY 2: [Signature]	DATE/TIME 3/28/17 0814	PROJECT NAME DCSD	RECEIPT Total # of Containers
SPECIAL INSTRUCTIONS/COMMENTS: Preserve at lab per protocol	SHIPMENT METHOD OUT / / VIA: IN / / VIA: CLIENT FedEx UPS MAIL COURIER GREYHOUND OTHER	SITE ADDRESS: 5065	SEND REPORT TO: Lana Miles + Tim Royer	INVOICE TO: (IF DIFFERENT FROM ABOVE) lanamiles@aem-net.com tim-royer@aem-net.com	Turnaround Time Request <input type="radio"/> Standard 5 Business Days <input type="radio"/> 2 Business Day Rush <input type="radio"/> Next Business Day Rush <input type="radio"/> Same Day Rush (auth req.) <input checked="" type="radio"/> Other 10 business days
SAMPLER INFORMATION				QUOTE #:	PO#:

SAMPLES RECEIVED AFTER 3PM OR ON SATURDAY ARE CONSIDERED RECEIVED THE NEXT BUSINESS DAY. IF TURNAROUND TIME IS NOT INDICATED, AES WILL PROCEED WITH STANDARD TAT OF SAMPLES. SAMPLES ARE DISPOSED 30 DAYS AFTER REPORT COMPLETION UNLESS OTHER ARRANGEMENTS ARE MADE.

MATRIX CODES: A = Air GW = Groundwater SE = Sediment SO = Soil SW = Surface Water W = Water (Blanks) DW = Drinking Water (Blanks) O = Other (specify) WW = Waste Water
PRESERVATIVE CODES: H+I = Hydrochloric acid + ice I = Ice only N = Nitric acid S+I = Sulfuric acid + ice S/M+I = Sodium Bisulfate/Methanol + ice O = Other (specify) NA = None

Analytical Environmental Services, Inc

Date: 11-Apr-17

Client: Atlanta Environmental Mgmt	Client Sample ID: 5065-032817-SC-001-A
Project Name: DCSD - 5065	Collection Date: 3/28/2017 4:45:00 AM
Lab ID: 1703O11-001	Matrix: Drinking Water

Analyses	Result	Reporting Limit	Qual	Units	BatchID	Dilution Factor	Date Analyzed	Analyst
Trace Elements by ICP/MS E200.8								
				(E200.2)				
Lead	BRL	1.00		ug/L	240548	1	04/04/2017 22:37	JR

Qualifiers:

- * Value exceeds maximum contaminant level
- BRL Below reporting limit
- H Holding times for preparation or analysis exceeded
- N Analyte not NELAC certified
- B Analyte detected in the associated method blank
- > Greater than Result value

- E Estimated (value above quantitation range)
- S Spike Recovery outside limits due to matrix
- Narr See case narrative
- NC Not confirmed
- < Less than Result value
- J Estimated value detected below Reporting Limit

SAMPLE/COOLER RECEIPT CHECKLIST

1. Client Name: _____

AES Work Order Number: _____

2. Carrier: FedEx UPS USPS Client Courier Other _____

	Yes	No	N/A	Details	Comments
3. Shipping container/cooler received in good condition?				damaged <input type="checkbox"/> leaking <input type="checkbox"/> other <input type="checkbox"/>	
4. Custody seals present on shipping container?					
5. Custody seals intact on shipping container?					
6. Temperature blanks present?					
7. Cooler temperature(s) within limits of 0-6°C? [See item 13 and 14 for temperature recordings.]				Cooling initiated for recently collected samples / ice present <input type="checkbox"/>	
8. Chain of Custody (COC) present?					
9. Chain of Custody signed, dated, and timed when relinquished and received?					
10. Sampler name and/or signature on COC?					
11. Were all samples received within holding time?					
12. TAT marked on the COC?				If no TAT indicated, proceeded with standard TAT per Terms & Conditions. <input type="checkbox"/>	

13. Cooler 1 Temperature _____ °C Cooler 2 Temperature _____ °C Cooler 3 Temperature _____ °C Cooler 4 Temperature _____ °C
 Cooler 5 Temperature _____ °C Cooler 6 Temperature _____ °C Cooler 7 Temperature _____ °C Cooler 8 Temperature _____ °C

15. Comments: _____

I certify that I have completed sections 1-15 (dated initials). _____

	Yes	No	N/A	Details	Comments
16. Were sample containers intact upon receipt?					
17. Custody seals present on sample containers?					
18. Custody seals intact on sample containers?					
19. Do sample container labels match the COC?				incomplete info <input type="checkbox"/> illegible <input type="checkbox"/> no label <input type="checkbox"/> other <input type="checkbox"/>	
20. Are analyses requested indicated on the COC?					
21. Were all of the samples listed on the COC received?				samples received but not listed on COC <input type="checkbox"/> samples listed on COC not received <input type="checkbox"/>	
22. Was the sample collection date/time noted?					
23. Did we receive sufficient sample volume for indicated analyses?					
24. Were samples received in appropriate containers?					
25. Were VOA samples received without headspace (< 1/4" bubble)?					
26. Were trip blanks submitted?				listed on COC <input type="checkbox"/> not listed on COC <input type="checkbox"/>	

27. Comments: _____

I certify that I have completed sections 16-27 (dated initials). _____

	Yes	No	N/A	Details	Comments
28. Have containers needing chemical preservation been checked?					
29. Containers meet preservation guidelines?					
30. Was pH adjusted?					

I certify that I have completed sections 28-30 (dated initials). _____

Client: Atlanta Environmental Mgmt
 Project Name: DCSD - 5065
 Workorder: 1703O11

ANALYTICAL QC SUMMARY REPORT

BatchID: 240548

Sample ID: MB-240548	Client ID:	Units: ug/L	Prep Date: 04/04/2017	Run No: 340012							
SampleType: MBLK	TestCode: Trace Elements by ICP/MS E200.8	BatchID: 240548	Analysis Date: 04/04/2017	Seq No: 7438566							
Analyte	Result	RPT Limit	SPK value	SPK Ref Val	%REC	Low Limit	High Limit	RPD Ref Val	%RPD	RPD Limit	Qual

Lead BRL 1.00

Sample ID: LCS-240548	Client ID:	Units: ug/L	Prep Date: 04/04/2017	Run No: 340012							
SampleType: LCS	TestCode: Trace Elements by ICP/MS E200.8	BatchID: 240548	Analysis Date: 04/04/2017	Seq No: 7438567							
Analyte	Result	RPT Limit	SPK value	SPK Ref Val	%REC	Low Limit	High Limit	RPD Ref Val	%RPD	RPD Limit	Qual

Lead 88.84 1.00 100.0 88.8 85 115

Sample ID: 1703O11-001AMS	Client ID: 5065-032817-SC-001-A	Units: ug/L	Prep Date: 04/04/2017	Run No: 340012							
SampleType: MS	TestCode: Trace Elements by ICP/MS E200.8	BatchID: 240548	Analysis Date: 04/04/2017	Seq No: 7438569							
Analyte	Result	RPT Limit	SPK value	SPK Ref Val	%REC	Low Limit	High Limit	RPD Ref Val	%RPD	RPD Limit	Qual

Lead 89.41 1.00 100.0 0.3622 89.0 70 130

Sample ID: 1703O54-066AMS	Client ID:	Units: ug/L	Prep Date: 04/04/2017	Run No: 340012							
SampleType: MS	TestCode: Trace Elements by ICP/MS E200.8	BatchID: 240548	Analysis Date: 04/04/2017	Seq No: 7438574							
Analyte	Result	RPT Limit	SPK value	SPK Ref Val	%REC	Low Limit	High Limit	RPD Ref Val	%RPD	RPD Limit	Qual

Lead 89.04 1.00 100.0 1.549 87.5 70 130

Sample ID: 1703O11-001AMSD	Client ID: 5065-032817-SC-001-A	Units: ug/L	Prep Date: 04/04/2017	Run No: 340012							
SampleType: MSD	TestCode: Trace Elements by ICP/MS E200.8	BatchID: 240548	Analysis Date: 04/04/2017	Seq No: 7438572							
Analyte	Result	RPT Limit	SPK value	SPK Ref Val	%REC	Low Limit	High Limit	RPD Ref Val	%RPD	RPD Limit	Qual

Lead 85.75 1.00 100.0 0.3622 85.4 70 130 89.41 4.18 20

Qualifiers: > Greater than Result value < Less than Result value B Analyte detected in the associated method blank
 BRL Below reporting limit E Estimated (value above quantitation range) H Holding times for preparation or analysis exceeded
 J Estimated value detected below Reporting Limit N Analyte not NELAC certified R RPD outside limits due to matrix
 Rpt Lim Reporting Limit S Spike Recovery outside limits due to matrix

ATTACHMENT C
Excerpt from Pace Laboratory Analytical Report



PACE ANALYTICAL SERVICES, INC.

Environmental Monitoring & Laboratory Analysis
110 Technology Parkway, Peachtree Corners, GA 30092
(770) 734-4200 FAX (770) 734-4201

Laboratory Report

Prepared For:

**DeKalb County Public Works - Doraville
4830 Winters Chapel Rd
Doraville, GA 30360**

Attention: Ms. Jody Shoemaker

Report Number: AZJ0426

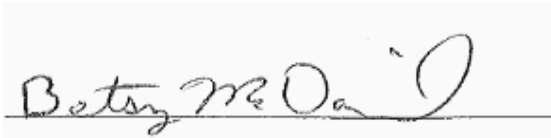
October 24, 2016

Project: School Board

Project #:[none]

We appreciate the opportunity to provide the analytical support for your project. The analytical results in this report are based upon information supplied by you, the client, and are for your exclusive use. If you have any questions regarding this data package, please do not hesitate to call.

Approved:



Betsy McDaniel
Project Manager

This report may not be reproduced, except in full, without written approval from Pace Analytical Services, Inc. Pace Analytical Services, Inc. certifies that the following analytical results meet all requirements of the National Environmental Laboratory Accreditation Conference(NELAC).
All test results relate only to the samples analyzed.



PACE ANALYTICAL SERVICES, INC.

Environmental Monitoring & Laboratory Analysis
110 Technology Parkway, Peachtree Corners, GA 30092
(770) 734-4200 FAX (770) 734-4201

DeKalb County Public Works - Doraville
4830 Winters Chapel Rd
Doraville GA, 30360
Attention: Ms. Jody Shoemaker

October 24, 2016

Report No.: AZJ0426

Project: School Board

Client ID: 29-Sagamore Hills

Lab Number ID: AZJ0426-06

Date/Time Sampled: 10/13/2016 6:13:00AM

Date/Time Received: 10/14/2016 11:35:00AM

Matrix: Drinking Water

Analyte	Result	RL	Units	Method	Qual.	DF	Preparation Date	Analytical Date	Batch	Init.
Metals, Total										
Lead	0.0264	0.0030	mg/L	EPA 200.8		1	10/21/16 13:30	10/21/16 15:45	6100540	CSW



PACE ANALYTICAL SERVICES, INC.

Environmental Monitoring & Laboratory Analysis
 110 Technology Parkway, Peachtree Corners, GA 30092
 (770) 734-4200 FAX (770) 734-4201

DeKalb County Public Works - Doraville
 4830 Winters Chapel Rd
 Doraville GA, 30360
 Attention: Ms. Jody Shoemaker

October 24, 2016

Report No.: AZJ0426

Metals, Total - Quality Control

Analyte	Result	Reporting Limit	Units	Spike Level	Source Result	%REC	%REC Limits	RPD	RPD Limit	Qual
Batch 6100540 - EPA 200.8										
Blank (6100540-BLK1)										
Lead	ND	0.0030	mg/L							Prepared & Analyzed: 10/21/16
LCS (6100540-BS1)										
Lead	0.0941	0.0030	mg/L	0.10000		94	85-115			Prepared & Analyzed: 10/21/16
Matrix Spike (6100540-MS1)										
		Source: AZJ0426-01								Prepared & Analyzed: 10/21/16
Lead	0.0932	0.0030	mg/L	0.10000	0.0007	92	70-130			



PACE ANALYTICAL SERVICES, INC.

Environmental Monitoring & Laboratory Analysis
110 Technology Parkway, Peachtree Corners, GA 30092
(770) 734-4200 FAX (770) 734-4201

DeKalb County Public Works - Doraville
4830 Winters Chapel Rd
Doraville GA, 30360
Attention: Ms. Jody Shoemaker

October 24, 2016

Laboratory Certifications

Code	Description	Number	Expires
GADW	Georgia DW Inorganics Eff: 07/01/2016	812	06/30/2017
NELDW	FL DOH NELAC (Drinking Water) Eff: 07/01/2016	E87315	06/30/2017



DeKalb County Public Works - Doraville
4830 Winters Chapel Rd
Doraville GA, 30360
Attention: Ms. Jody Shoemaker

PACE ANALYTICAL SERVICES, INC.

Environmental Monitoring & Laboratory Analysis
110 Technology Parkway, Peachtree Corners, GA 30092
(770) 734-4200 FAX (770) 734-4201

October 24, 2016

Legend

Definition of Laboratory Terms

ND - None Detected at the Reporting Limit

TIC - Tentatively Identified Compound

CFU - Colony Forming Units

SOP - Method run per Pace Standard Operating Procedure

RL - Reporting Limit

DF - Dilution Factor

* - Analyte not included in the NELAC list of certified analytes.

Sample Information

N-Nitrosodiphenylamine breaks down to diphenylamine in the GCMS; both analytes are reported as N-Nitrosodiphenylamine. Pace is not NELAC certified for diphenylamine.

Phthalic acid and phthalic anhydride are reported as dimethyl phthalate

Maleic acid and maleic anhydride are reported as dimethyl malate

1,2-Diphenylhydrazine breaks down to azobenzene in the GCMS; both analytes are reported as azobenzene

Definition of Qualifiers

Note: Unless otherwise noted, all results are reported on an as received basis.

CHAIN OF CUSTODY RECORD



Pace Analytical Services, Inc
 110 TECHNOLOGY PARKWAY, PEACHTREE CORNERS, GA 30092
 (770) 734-4200 : FAX (770) 734-4201

PAGE: _____ OF _____

CLIENT NAME:				ANALYSIS REQUESTED				CONTAINER TYPE	PRESERVATION
CLIENT ADDRESS/PHONE NUMBER/FAX NUMBER:									
DeKalb County Watershed								P	
4830 Winters Chapel Rd								3	
REPORT TO:		CC:		CONTAINERS				L	A
S. Shumaker									
REQUESTED COMPLETION DATE:		PO #:		Lead / EPA 2008				B	I
		1028490							
PROJECT NAME/STATE:								D	O
School Board									
PROJECT #:								N	U
Collection DATE	Collection TIME	MATRIX CODE*	C O M P	G R A B	SAMPLE IDENTIFICATION				
10/2/16	6:03	DW	✓	✓	27-Woodward Elem	1	✓	1	
10/2/16	6:16	DW	✓	✓	26-Columbia Elem	1	✓	2	
10/2/16	6:52	DW	✓	✓	5A-Tony Elem	1	✓	3	
					Resample				
10/3/16	6:15	DW	✓	✓	28A-Carey Reynolds	1	✓	4	
10/3/16	6:20	DW	✓	✓	28B-Carey Reynolds	1	✓	5	
10/3/16	6:13	DW	✓	✓	29-Sagebrook Hills	1	✓	6	
10/4/16	6:05	DW	✓	✓	30-Brockitt Elem	1	✓	7	
10/4/16	6:13	DW	✓	✓	31-Hawthorne	1	✓	8	
SAMPLED BY AND TITLE:				DATE/TIME:		RELINQUISHED BY:		DATE/TIME:	
S. Shumaker / Lab Supv.				10/14/16 6:15 a		S. Shumaker		10/14/16 11:35	
RECEIVED BY:				DATE/TIME:		RELINQUISHED BY:		DATE/TIME:	
M. Goldman				10/14/16 11:35					
RECEIVED BY LAB:				DATE/TIME:		SAMPLE SHIPPED VIA:		FOR LAB USE ONLY	
M. Goldman				10/14/16 11:35		UPS FED-EX USPS COURIER CLIENT OTHER FS		LAB #: AZJ 0426	
Temperature:				Custody Seal:		# of Coolers:		Entered into LIMS:	
6°C 6°C				NA				M2	
Tracking #:									

4 OF 14



PACE ANALYTICAL SERVICES, INC.

Environmental Monitoring & Laboratory Analysis
110 Technology Parkway, Peachtree Corners, GA 30092
(770) 734-4200 FAX (770) 734-4201

LOG-IN CHECKLIST

Printed: 10/24/2016 3:50:27PM

Attn: Ms. Jody Shoemaker

Client: DeKalb County Public Works - Doraville
Project: School Board
Date Received: 10/14/16 11:35

Work Order: AZJ0426
Logged In By: Mohammad M. Rahman

OBSERVATIONS

#Samples: 8 **#Containers:** 8
Minimum Temp(C): 6.0 **Maximum Temp(C):** 6.0 **Custody Seal(s) Used:** N/A

CHECKLIST ITEMS

- COC included with Samples YES
- Sample Container(s) Intact YES
- Chain of Custody Complete YES
- Sample Container(s) Match COC YES
- Custody seal Intact NO
- Temperature in Compliance YES
- Sufficient Sample Volume for Analysis YES
- Zero Headspace Maintained for VOA Analyses YES
- Samples labeled preserved (If Applicable) YES
- Samples received within Allowable Hold Times YES
- Samples Received on Ice YES
- Preservation Confirmed YES

Comments: