



November 30, 2017

Via E-Mail: Joshua_I_williams@dekalbschoolsga.org

Mr. Joshua L. Williams, MBA, MSM, PMP
Chief Operations Officer
DeKalb County School District
Operations Division
Sam Moss Service Center
1780 Montreal Road
Tucker, Georgia 30084

**Re: Summary of Additional Lead in Drinking Water Sample Results
Panthersville Administrative Facility (Facility ID #9007)
2627 Wildcat Road, Decatur, Georgia 30034
AEM Project No. 1561-1601**

Dear Mr. Williams:

Atlanta Environmental Management, Inc. (AEM) is pleased to provide the DeKalb County School District (DCSD) an electronic copy of the Lead in Drinking Water Sample Results for Panthersville Administrative Facility (Facility ID #9007). Additional drinking water samples from select source units were collected on November 22, 2017, and analytical results were received from Analytical Environmental Services, Inc., on November 29, 2017.

FINDINGS

Sample Results of Previously Identified Source Units That Exceeded 15 ppb

During the initial sampling event on May 23, 2017, one source unit (DF-003) was sampled and the analytical results indicated that the results were above EPA's action level of 15 parts per billion (ppb). DCSD replaced the source unit and AEM collected two drinking water samples on November 22, 2017. A description of the drinking water outlets sampled and a summary of sample analytical results are provided in Table 1.

None of the samples collected contained lead at a concentration exceeding EPA's action level of 15 ppb.

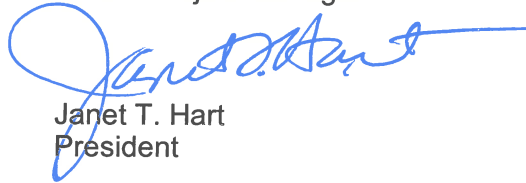
We appreciate your selection of AEM for this project. If you have any questions, please do not hesitate to contact us.

Sincerely,

Atlanta Environmental Management, Inc.



Leona Miles, CHMM
Senior Project Manager



Janet T. Hart
President

/krf

cc: Daniel Drake (DCSD)
Tracee Hill (DCSD)
Sandra Glenn (DeKalb County Watershed Management)
Ryan Cira (DeKalb Board of Health)

Attachment: Table

Table 1. Summary of Lead in Drinking Water Laboratory Analytical Retest Results

Panthersville Administrative Facility

2627 Wildcat Road, Decatur, GA 30034



Sample ID*	Sample Location Description	Sample Date & Time	Lead Test Results (ppb)
9007-112217-DF-003-A	Initial Draw Sample; Single Oasis Drinking Fountain by Minifridge in Office; Wall-mounted	11/22/17 5:05 AM	1.17
9007-112217-DF-003-B	Flush Sample; Single Oasis Drinking Fountain by Minifridge in Office; Wall-mounted	11/22/17 5:06 AM	1.16

Notes:

ppb-parts per billion

Bold-Exceeds 15 ppb--EPA's Action Level for Lead

* Note--Where "A" and "B" are indicated, AEM collected two samples at each source area location: ("A") initial draw sample; and ("B") after a 30-second flush sample

**The source unit was initially sampled on 5/23/17 and the initial result indicated that the concentration exceeded the EPA standard of 15 ppb. The source unit was replaced by DCSD and retesting was conducted. The above summarizes the retesting results



June 9, 2017

Via E-Mail: Joshua_I_williams@dekalbschoolsga.org

Mr. Joshua L. Williams, MBA, MSM, PMP
Chief Operations Officer
DeKalb County School District
Operations Division
Sam Moss Service Center
1780 Montreal Road
Tucker, Georgia 30084

**Re: Lead in Drinking Water Sample Results
Panthersville Administrative Facility (Facility ID #9007)
2627 Wildcat Road, Decatur, Georgia 30034
AEM Project No. 1561-1601**

Dear Mr. Williams:

Atlanta Environmental Management, Inc. (AEM) is pleased to provide the DeKalb County School District (DCSD) an electronic copy of the Lead in Drinking Water Sample Results for Panthersville Administrative Facility (Facility ID #9007). Samples were collected on May 23, 2017, and analytical results were received from Analytical Environmental Services, Inc., on June 7, 2017.

FINDINGS

AEM collected 9 drinking water samples from 4 sources at Panthersville Administrative Facility (Facility ID #9007), including two duplicate samples. A description of the drinking water outlets sampled and a summary of sample analytical results are provided in the attached table.

One of the sources sampled had a drinking water sample result that contained lead at a concentration at or above EPA's action level of 15 parts per billion. This source is indicated in bold and shaded font in the attached table.

Mr. Joshua Williams—DeKalb County School District
June 9, 2017
Page 2

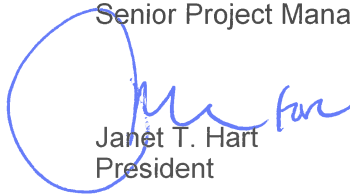
We appreciate your selection of AEM for this project. If you have any questions, please do not hesitate to contact us.

Sincerely,

Atlanta Environmental Management, Inc.



Leona Miles, CHMM
Senior Project Manager



Janet T. Hart
President

/krf

cc: Daniel Drake (DCSD)
Tracee Hill (DCSD)
Sandra Glenn (DeKalb County Watershed Management)
Ryan Cira (DeKalb Board of Health)

Attachment: Table

Table 1. Summary of Lead in Drinking Water Laboratory Analytical Results

Panthersville Administrative Facility

2627 Wildcat Road, Decatur, GA 30034



Sample ID*	Sample Location Description	Sample Date & Time	Lead Test Results (ppb)
9007-052317-DF-001-A	Initial Draw Sample; Right Sunroc Drinking Fountain in Breakroom Lounge; Wall-mounted	05/23/17 5:19 AM	10.1
9007-052317-DF-001-B	Flush Sample; Right Sunroc Drinking Fountain in Breakroom Lounge; Wall-mounted	05/23/17 5:21 AM	3.15
9007-052317-DF-002-A	Initial Draw Sample; Left Sunroc Drinking Fountain in Breakroom Lounge; Wall-mounted	05/23/17 5:24 AM	1.47
9007-052317-DF-002-B	Flush Sample; Left Sunroc Drinking Fountain in Breakroom Lounge; Wall-mounted	05/23/17 5:25 AM	None Detected
9007-052317-DF-003-A	Initial Draw Sample; Single Oasis Drinking Fountain by Minifridge in Office; Wall-mounted	05/23/17 5:28 AM	20.9
9007-052317-DF-003-B	Flush Sample; Single Oasis Drinking Fountain by Minifridge in Office; Wall-mounted	05/23/17 5:29 AM	10.9
9007-052317-SC-001-A	Main Service Connection Entry into Building	05/23/17 5:10 AM	None Detected

Notes:

ppb-parts per billion

Bold-Exceeds 15 ppb--EPA's Action Level for Lead

* Note--Where "A" and "B" are indicated, AEM collected two samples at each source area location: ("A") initial draw sample; and ("B") after a 30-second flush sample



June 9, 2017

Via E-Mail: Joshua_I_williams@dekalbschoolsga.org

Mr. Joshua L. Williams, MBA, MSM, PMP
Chief Operations Officer
DeKalb County School District
Operations Division
Sam Moss Service Center
1780 Montreal Road
Tucker, Georgia 30084

**Re: Lead in Drinking Water Sample Results
William Buck Godfrey Stadium (Facility ID #9005)
2817 Clifton Springs Road, Decatur, Georgia 30079
AEM Project No. 1561-1601**

Dear Mr. Williams:

Atlanta Environmental Management, Inc. (AEM) is pleased to provide the DeKalb County School District (DCSD) an electronic copy of the Lead in Drinking Water Sample Results for William Buck Godfrey Stadium (Facility ID #9005). Samples were collected on May 23, 2017, and analytical results were received from Analytical Environmental Services, Inc., on June 7, 2017.

FINDINGS

AEM collected 20 drinking water samples from 10 sources at William Buck Godfrey Stadium (Facility ID #9005), including two duplicate samples. A description of the drinking water outlets sampled and a summary of sample analytical results are provided in the attached table.

One of the sources sampled had a drinking water sample result that contained lead at a concentration at or above EPA's action level of 15 parts per billion. This source is indicated in bold and shaded font in the attached table.

Mr. Joshua Williams—DeKalb County School District
June 9, 2017
Page 2

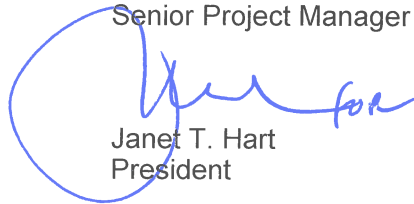
We appreciate your selection of AEM for this project. If you have any questions, please do not hesitate to contact us.

Sincerely,

Atlanta Environmental Management, Inc.



Leona Miles, CHMM
Senior Project Manager



Janet T. Hart
President

/krf

cc: Daniel Drake (DCSD)
Tracee Hill (DCSD)
Sandra Glenn (DeKalb County Watershed Management)
Ryan Cira (DeKalb Board of Health)

Attachment: Table

Table 1. Summary of Lead in Drinking Water Laboratory Analytical Results
William Buck Godfrey Stadium Facility
2817 Clifton Springs Road, Decatur, GA 30079



Sample ID*	Sample Location Description	Sample Date & Time	Lead Test Results (ppb)
9005-052317-DF-001-A	Initial Draw Sample; Single Standard Drinking Fountain in Men's RR to Left of Concession; Wall-mounted	05/23/17 6:58 AM	None Detected
9005-052317-DF-001-B	Flush Sample; Single Standard Drinking Fountain in Men's RR to Left of Concession; Wall-mounted	05/23/17 6:59 AM	None Detected
9005-052317-DF-002-A	Initial Draw Sample; Single Standard Drinking Fountain in Women's RR to Left of Concession; Wall-mounted	05/23/17 6:53 AM	3.55
9005-052317-DF-002-B	Flush Sample; Single Standard Drinking Fountain in Women's RR to Left of Concession; Wall-mounted	05/23/17 6:54 AM	1.03
9005-052317-DF-003-A	Initial Draw Sample; Single Oasis Drinking Fountain in Women's RR to Right of Concession; Wall-mounted	05/23/17 6:41 AM	None Detected
9005-052317-DF-003-B	Flush Sample; Single Oasis Drinking Fountain in Women's RR to Right of Concession; Wall-mounted	05/23/17 6:42 AM	None Detected
9005-052317-DF-004-A	Initial Draw Sample; Single Oasis Drinking Fountain in Locker Rm Farthest from Road; Wall-mounted	05/23/17 7:30 AM	None Detected
9005-052317-DF-004-B	Flush Sample; Single Oasis Drinking Fountain in Locker Rm Farthest from Road; Wall-mounted	05/23/17 7:31 AM	None Detected
9005-052317-DF-005-A	Initial Draw Sample; Single Halsey Taylor Drinking Fountain in Locker Rm Closest to Road; Wall-mounted	05/23/17 7:11 AM	20.2
9005-052317-DF-005-B	Flush Sample; Single Halsey Taylor Drinking Fountain in Locker Rm Closest to Road; Wall-mounted	05/23/17 7:13 AM	8.96
9005-052317-DF-006-A	Initial Draw Sample; Single Oasis Drinking Fountain in Men's RR to Right of Concession; Wall-mounted	05/23/17 6:48 AM	None Detected
9005-052317-DF-006-B	Flush Sample; Single Oasis Drinking Fountain in Men's RR to Right of Concession; Wall-mounted	05/23/17 6:49 AM	None Detected
9005-052317-IM-001-A	Initial Draw Sample; Ice-o-matic Ice Machine in Laundry Rm of Locker Rm Farthest from Road	05/23/17 7:37 AM	None Detected
9005-052317-OT-001-A	Initial Draw Sample; Sink in Front Half of Concession Stand to Left of Coke Fridge	05/23/17 6:33 AM	1.12
9005-052317-OT-001-B	Flush Sample; Sink in Front Half of Concession Stand to Left of Coke Fridge	05/23/17 6:34 AM	None Detected

Table 1. Summary of Lead in Drinking Water Laboratory Analytical Results

William Buck Godfrey Stadium Facility

2817 Clifton Springs Road, Decatur, GA 30079



Sample ID*	Sample Location Description	Sample Date & Time	Lead Test Results (ppb)
9005-052317-RS-001-A	Initial Draw Sample; Far Right Sink in RR of Locker Rm Farthest from Road	05/23/17 7:33 AM	1.11
9005-052317-RS-001-B	Flush Sample; Far Right Sink in RR of Locker Rm Farthest from Road	05/23/17 7:34 AM	None Detected
9005-052317-SC-001-A	Main Service Connection Entry into Building	05/23/17 6:24 AM	None Detected

Notes:

ppb-parts per billion

Bold-Exceeds 15 ppb--EPA's Action Level for Lead

* Note--Where "A" and "B" are indicated, AEM collected two samples at each source area location: ("A") initial draw sample; and ("B") after a 30-second flush sample



October 23, 2017

Via E-Mail: Joshua_I_williams@dekalbschoolsga.org

Mr. Joshua L. Williams, MBA, MSM, PMP
Chief Operations Officer
DeKalb County School District
Operations Division
Sam Moss Service Center
1780 Montreal Road
Tucker, Georgia 30084

**Re: Summary of Additional Lead in Drinking Water Sample Results
William Buck Godfrey Stadium (Facility ID #9005)
2817 Clifton Springs Road, Decatur, Georgia 30079
AEM Project No. 1561-1601**

Dear Mr. Williams:

Atlanta Environmental Management, Inc. (AEM) is pleased to provide the DeKalb County School District (DCSD) an electronic copy of the Lead in Drinking Water Sample Results for William Buck Godfrey Stadium (Facility ID #9005). Additional drinking water samples from select source units were collected on October 11, 2017, and analytical results were received from Analytical Environmental Services, Inc., on October 20, 2017.

FINDINGS

Sample Results of Previously Identified Source Units That Exceeded 15 ppb

During the initial sampling event on May 23, 2017, one source unit was sampled and the analytical results indicated that one or more of the results were above EPA's action level of 15 parts per billion (ppb). DCSD replaced the source unit and AEM collected two drinking water samples on October 11, 2017.

None of the samples collected contained lead at a concentration exceeding EPA's action level of 15 ppb. A description of the drinking water outlet sampled and a summary of sample analytical results are provided in Table 1.

Mr. Joshua Williams—DeKalb County School District
October 23, 2017
Page 2

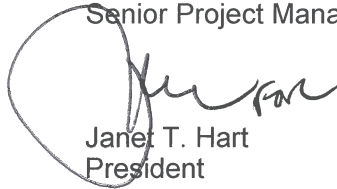
We appreciate your selection of AEM for this project. If you have any questions, please do not hesitate to contact us.

Sincerely,

Atlanta Environmental Management, Inc.



Leona Miles, CHMM
Senior Project Manager



Janet T. Hart
President

/krf

cc: Daniel Drake (DCSD)
Tracee Hill (DCSD)
Sandra Glenn (DeKalb County Watershed Management)
Ryan Cira (DeKalb Board of Health)

Attachment: Table

Table 1. Summary of Lead in Drinking Water Laboratory Analytical Retest Results

William Buck Godfrey Stadium Facility

2817 Clifton Springs Road, Decatur, GA 30079



Sample ID*/**	Sample Location Description	Sample Date & Time	Lead Test Results (ppb)
9005-101117-DF-005-A	Initial Draw Sample; Single Elkay Drinking Fountain in Locker Rm Closest to Road; Wall-mounted	10/11/17 5:16 AM	1.27
9005-101117-DF-005-B	Flush Sample; Single Elkay Drinking Fountain in Locker Rm Closest to Road; Wall-mounted	10/11/17 5:17 AM	1.50

Notes:

ppb-parts per billion

Bold-Exceeds 15 ppb--EPA's Action Level for Lead

* Note--Where "A" and "B" are indicated, AEM collected two samples at each source area location: ("A") initial draw sample; and ("B") after a 30-second flush sample

**The source unit was initially sampled on 5/23/17 and the initial results indicated that a concentration exceeded the EPA standard of 15 ppb. The source unit was replaced by DCSD and retesting was conducted. The above summarizes the retest results.



November 29, 2017

Via E-Mail: Joshua_I_williams@dekalbschoolsga.org

Mr. Joshua L. Williams, MBA, MSM, PMP
Chief Operations Officer
DeKalb County School District
Operations Division
Sam Moss Service Center
1780 Montreal Road
Tucker, Georgia 30084

**Re: Final Technical Lead in Drinking Water Sampling Report
William Buck Godfrey Stadium (Facility ID #9005)
2817 Clifton Springs Road, Decatur, Georgia 30079
AEM Project No. 1561-1601**

Dear Mr. Williams:

Atlanta Environmental Management, Inc. (AEM) is pleased to provide the DeKalb County School District (DCSD) an electronic copy of the Final Technical Lead in Drinking Water Sampling Report for William Buck Godfrey Stadium (Facility ID #9005).

Initial sampling was conducted on May 23, 2017, and analytical results were received from Analytical Environmental Services, Inc., on June 7, 2017. Additional drinking water samples from select source units were collected on October 11, 2017, and analytical results were received from Analytical Environmental Services, Inc., on October 20, 2017.

FINDINGS

Initial Testing

AEM collected 20 drinking water samples from 10 sources at William Buck Godfrey Stadium (Facility ID #9005), including 2 duplicate samples (see Figure 1). A description of the drinking water outlets sampled and a summary of sample analytical results are provided in the attached table.

Samples were collected in accordance with the Water Sampling Methodology Protocol for DeKalb County School District, dated September 12, 2016. A copy of AEM's Field Sampling Notes is provided in Attachment A.

One of the sources sampled had a drinking water sample result that contained lead at a concentration at or above EPA's action level of 15 parts per billion (ppb). This source is indicated in bold and shaded font in the attached table. A copy of the AES laboratory analytical report is provided in Attachment B.

Sample Results of Previously Identified Source Units That Exceeded 15 ppb


During the initial sampling event on May 23, 2017, one source unit was sampled and the analytical results indicated that one or more of the results were above EPA's action level of 15 ppb. DCSD replaced the source unit and AEM collected two drinking water samples on October 11, 2017.

None of the samples collected contained lead at a concentration exceeding EPA's action level of 15 ppb. A description of the drinking water outlet sampled and a summary of sample analytical results are provided in Table 1.

We appreciate your selection of AEM for this project. If you have any questions, please do not hesitate to contact us.

Sincerely,

Atlanta Environmental Management, Inc.



Leona Miles, CHMM
Senior Project Manager



Janet T. Hart
President

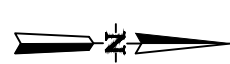
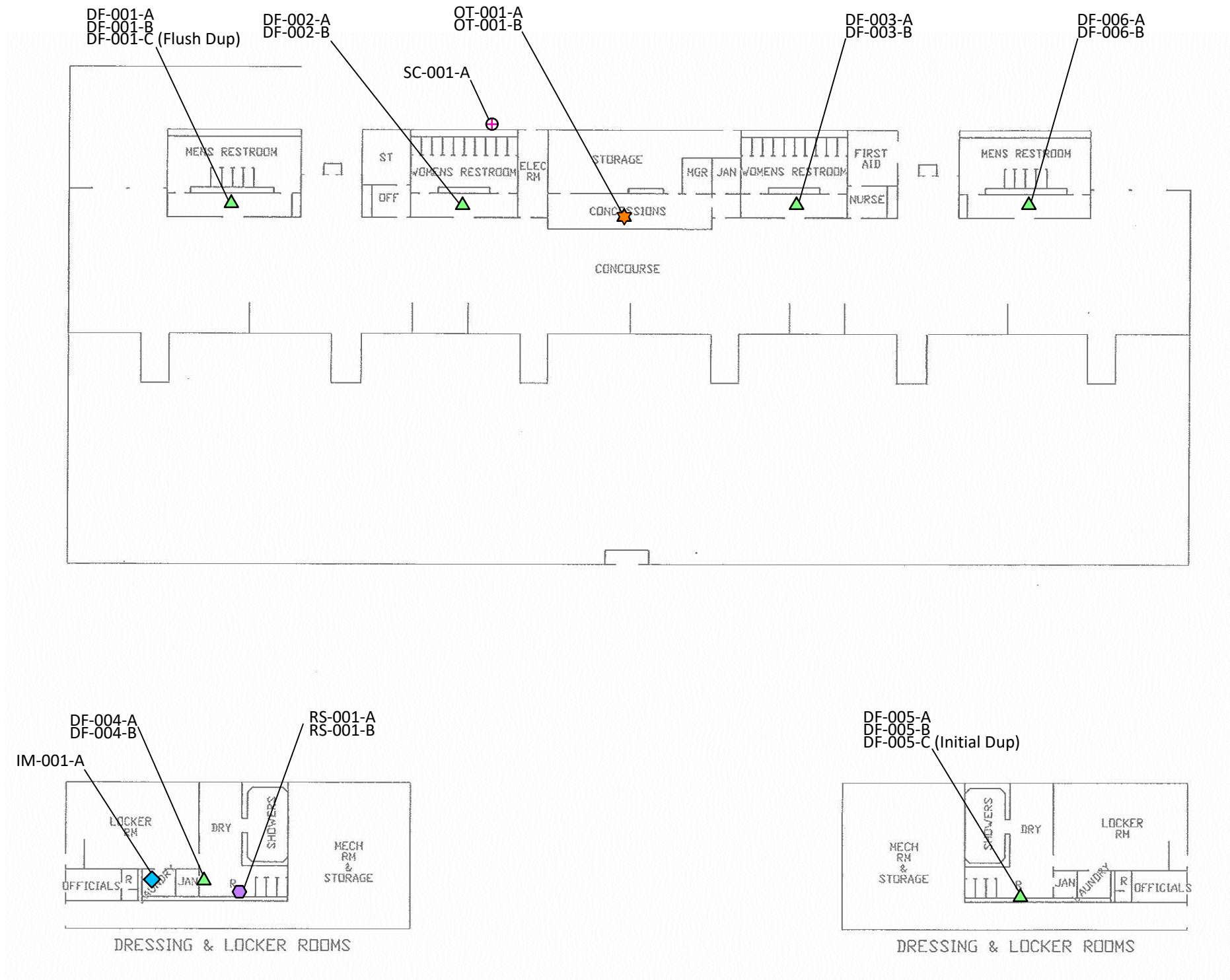
/krf


cc: Daniel Drake (DCSD)
Tracee Hill (DCSD)

FIGURE

Legend

- ▲ - Drinking Fountain (DF)
- ◆ - Ice Maker (IM)
- ★ - Other (OT)
- ⊖ - Restroom Sink (RS)
- ⊕ - Service Connection (SC)



 Atlanta Environmental Management, Inc. <small>Environmental Consulting, Engineering, Hydrogeologic Services</small> 2580 Northeast Expressway • Atlanta, Georgia 30345 Phone: 404.329.9006 • Fax: 404.329.2057			
PROJECT #:	1561-1601-9005	DATE:	November 14, 2017
DRAWN BY:	AL	REVISED:	---
CHECKED BY:	TR	SCALE:	NTS
PROJECT MGR:	LM	PRINTED:	11/14/2017 11:27 AM

Client: DeKalb County School District
 Site Location: William Buck Godfrey Stadium Facility (#9005)
 2817 Clifton Springs Road
 Decatur, GA 30079

Sample Location Plan

Figure
1

TABLE

Table 1. Summary of Lead in Drinking Water Laboratory Analytical Results
William Buck Godfrey Stadium Facility
 2817 Clifton Springs Road, Decatur, GA 30079



Sample ID*	Sample Location Description	Sample Date & Time	Lead Test Results (ppb)
9005-052317-DF-001-A	Initial Draw Sample; Single Standard Drinking Fountain in Men's RR to Left of Concession; Wall-mounted	05/23/17 6:58 AM	None Detected
9005-052317-DF-001-B	Flush Sample; Single Standard Drinking Fountain in Men's RR to Left of Concession; Wall-mounted	05/23/17 6:59 AM	None Detected
9005-052317-DF-001-C	Flush Duplicate Sample; Single Standard Drinking Fountain in Men's RR to Left of Concession; Wall-mounted	05/23/17 7:00 AM	None Detected
9005-052317-DF-002-A	Initial Draw Sample; Single Standard Drinking Fountain in Women's RR to Left of Concession; Wall-mounted	05/23/17 6:53 AM	3.55
9005-052317-DF-002-B	Flush Sample; Single Standard Drinking Fountain in Women's RR to Left of Concession; Wall-mounted	05/23/17 6:54 AM	1.03
9005-052317-DF-003-A	Initial Draw Sample; Single Oasis Drinking Fountain in Women's RR to Right of Concession; Wall-mounted	05/23/17 6:41 AM	None Detected
9005-052317-DF-003-B	Flush Sample; Single Oasis Drinking Fountain in Women's RR to Right of Concession; Wall-mounted	05/23/17 6:42 AM	None Detected
9005-052317-DF-004-A	Initial Draw Sample; Single Oasis Drinking Fountain in Locker Rm Farthest from Road; Wall-mounted	05/23/17 7:30 AM	None Detected
9005-052317-DF-004-B	Flush Sample; Single Oasis Drinking Fountain in Locker Rm Farthest from Road; Wall-mounted	05/23/17 7:31 AM	None Detected
9005-052317-DF-005-A	Initial Draw Sample; Single Halsey Taylor Drinking Fountain in Locker Rm Closest to Road; Wall-mounted	05/23/17 7:11 AM	20.2
9005-052317-DF-005-B	Flush Sample; Single Halsey Taylor Drinking Fountain in Locker Rm Closest to Road; Wall-mounted	05/23/17 7:13 AM	8.96
9005-052317-DF-005-C	Initial Draw Duplicate Sample; Single Halsey Taylor Drinking Fountain in Locker Rm Closest to Road; Wall-mounted	05/23/17 7:12 AM	19.8
9005-101117-DF-005-A	Initial Draw Sample; Single Elkay Drinking Fountain in Locker Rm Closest to Road; Wall-mounted	10/11/17 5:16 AM	1.27
9005-101117-DF-005-B	Flush Sample; Single Elkay Drinking Fountain in Locker Rm Closest to Road; Wall-mounted	10/11/17 5:17 AM	1.50

Table 1. Summary of Lead in Drinking Water Laboratory Analytical Results
William Buck Godfrey Stadium Facility
 2817 Clifton Springs Road, Decatur, GA 30079



Sample ID*	Sample Location Description	Sample Date & Time	Lead Test Results (ppb)
9005-052317-DF-006-A	Initial Draw Sample; Single Oasis Drinking Fountain in Men's RR to Right of Concession; Wall-mounted	05/23/17 6:48 AM	None Detected
9005-052317-DF-006-B	Flush Sample; Single Oasis Drinking Fountain in Men's RR to Right of Concession; Wall-mounted	05/23/17 6:49 AM	None Detected
9005-052317-IM-001-A	Initial Draw Sample; Ice-o-matic Ice Machine in Laundry Rm of Locker Rm Farthest from Road	05/23/17 7:37 AM	None Detected
9005-052317-OT-001-A	Initial Draw Sample; Sink in Front Half of Concession Stand to Left of Coke Fridge	05/23/17 6:33 AM	1.12
9005-052317-OT-001-B	Flush Sample; Sink in Front Half of Concession Stand to Left of Coke Fridge	05/23/17 6:34 AM	None Detected
9005-052317-RS-001-A	Initial Draw Sample; Far Right Sink in RR of Locker Rm Farthest from Road	05/23/17 7:33 AM	1.11
9005-052317-RS-001-B	Flush Sample; Far Right Sink in RR of Locker Rm Farthest from Road	05/23/17 7:34 AM	None Detected
9005-052317-SC-001-A	Main Service Connection Entry into Building	05/23/17 6:24 AM	None Detected

Notes:

ppb-parts per billion

Bold-Exceeds 15 ppb--EPA's Action Level for Lead

* Note--Where "A" and "B" are indicated, AEM collected two samples at each source area location: ("A") initial draw sample; and ("B") after a 30-second flush sample

ATTACHMENT A
AEM Field Sampling Forms

**DEKALB COUNTY SCHOOL DISTRICT
LEAD IN DRINKING WATER FIELD DATA SHEET**

FACILITY NAME: WILLIAM BUCK GODFREY STADIUM FACILITY
 ADDRESS: 2817 Clifton Springs Road Decatur, GA, 30079

FACILITY ID: 9005

DATE	TIME	SAMPLE ID (Facility ID-Date-Location Type-Sequential #-Sample Type)	NEAREST ROOM	LOCATION (circle)	DESCRIPTION	SAMPLER INIT.
5/23/17	0658	9005 - 052317 - DF-001-A	mens RR to left of concessions	In room Hallway	Single "Standard" Wm DF	A
5/23/17	0659	9005 - 052317 - DF-001-B	"	In room Hallway	"	A
5/23/17	0700	9005 - 052317 - DF-001-C	"	In room Hallway	Flush dup "	A
5/23/17	0711	9005 - 052317 - DF-005-A	Locker Room	In room Hallway	Single well mounted halsey taylor	A
5/23/17	0713	9005 - 052317 - DF-005-B	closest to rd "	In room Hallway	"	A
5/23/17	0712	9005 - 052317 - DF-005-C	"	In room Hallway	initial dup "	A
5/23/17	0730	9005 - 052317 - DF-004-A	Locker Room Farthest from rd	In room Hallway	Single oasis Wm DF	A
5/23/17	0731	9005 - 052317 - DF-004-B	"	In room Hallway	"	A
5/23/17	0733	9005 - 052317 - RS-001-A	"	In room Hallway	Sampled sink Farthest to right	A
5/23/17	0734	9005 - 052317 - RS-001-B	"	In room Hallway	"	A

LOCATION TYPE: AF = athletic field; CS = cafeteria sink; DF = drinking fountain; IM = ice maker; KS = kindergarten sink; RS = restroom sink; SC = service connection; TL = teachers' lounge. SAMPLE TYPE: A = initial draw; B = flush; C = duplicate

**DEKALB COUNTY SCHOOL DISTRICT
LEAD IN DRINKING WATER FIELD DATA SHEET**

FACILITY NAME: WILLIAM BUCK GODFREY STADIUM FACILITY
ADDRESS: 2817 Clifton Springs Road Decatur, GA, 30079

FACILITY ID: 9005

DATE	TIME	SAMPLE ID (Facility ID-Date-Location Type-Sequential #-Sample Type)	NEAREST ROOM	LOCATION (circle)	DESCRIPTION	SAMPLER INIT.
5/23/17	0624	9005 - 052317 - SC-001-A	Electrical Rm	outside In room Hallway	SPigot to right of electrical Rm	A7
5/23/17	0633	9005 - 052317 - OT-001-A	Consession Stand	In room Hallway	Sink in front half of Consession stand to left of Coca-Cola Fridge	A7
5/23/17	0634	9005 - 052317 - OT-001-B	"	In room Hallway	"	A7
5/23/17	0641	9005 - 052317 - DF-003-A	Womens RR to right of Consessions	In room Hallway	Single oasis w/m DF	A7
5/23/17	0642	9005 - 052317 - DF-003-B	"	In room Hallway	"	A7
5/23/17	0648	9005 - 052317 - DF-006-A	Mens RR to right of Consessions	In room Hallway	"	A7
5/23/17	0649	9005 - 052317 - DF-006-B	"	In room Hallway	"	A7
5/23/17	0653	9005 - 052317 - DF-002-A	Womens RR to left of Consessions	In room Hallway	Single "standard" w/m DF	A7
5/23/17	0654	9005 - 052317 - DF-002-B	"	In room Hallway	"	A7
5/23/17	0737	9005 - 052317 - IM-001-A	Locker Rm Farthest from Road	In room Hallway	Ice-o-matic IM in Laundry Rm	A7

LOCATION TYPE: AF = athletic field; CS = cafeteria sink; DF = drinking fountain; IM = ice maker; KS = kindergarten sink; RS = restroom sink; SC = service connection; TL = teachers' lounge. SAMPLE TYPE: A = initial draw; B = flush; C = duplicate

**DEKALB COUNTY SCHOOL DISTRICT
LEAD IN DRINKING WATER FIELD DATA SHEET**

FACILITY NAME: WILLIAM BUCK GODFREY STADIUM FACILITY
 ADDRESS: 2817 Clifton Springs Road Decatur, GA, 30079

FACILITY ID: 9005

DATE	TIME	SAMPLE ID (Facility ID-Date-Location Type-Sequential #-Sample Type)	NEAREST ROOM	LOCATION (circle)	DESCRIPTION	SAMPLER INIT.
10/11/17	0516	9005 - 101117 - DF-005-A	Boys locker Room	In room Hallway	Single WM Elkey DF only one in Room	AG
10/11/17	0517	9005 - 101117 - DF-005-B	"	In room Hallway	"	AG
10/11/17		9005 - 101117 -		In room Hallway		
10/11/17		9005 - 101117 -		In room Hallway		
10/11/17		9005 - 101117 -		In room Hallway		
10/11/17		9005 - 101117 -		In room Hallway		
10/11/17		9005 - 101117 -		In room Hallway		
10/11/17		9005 - 101117 -		In room Hallway		
10/11/17		9005 - 101117 -		In room Hallway		
10/11/17		9005 - 101117 -		In room Hallway		

LOCATION TYPE: AF = athletic field; CS = cafeteria sink; DF = drinking fountain; IM = ice maker; KS = kindergarten sink; RS = restroom sink; SC = service connection; TL = teachers' lounge. SAMPLE TYPE: A = initial draw; B = flush; C = duplicate

ATTACHMENT B
AES Laboratory Analytical Report

Leona Miles

From: NoReply@aesatlanta.net
Sent: Wednesday, June 7, 2017 11:51 AM
To: leona-miles@aem-net.com; tim-royer@aem-net.com
Subject: DCSD - 9005
Attachments: 1705L61_REPORT.pdf; 1705L61Invoice.pdf

Please see attached. If you have any questions or need further assistance please contact your project manager at 770-457-8177.

AES Reporting System

ANALYTICAL ENVIRONMENTAL SERVICES, INC.
3080 Presidential Drive ATLANTA, GA 30340
Tel: 770-457-8177 Fax: 770-457-8188
<http://www.aesatlanta.com>

NOTICE OF CONFIDENTIALITY: The information in this email and / or attachments may be legally privileged and is confidential information intended for the use of the individual or entity named in the email address. If the reader of this message is not the intended recipient, you are hereby notified that any use, dissemination, distribution, or copy of this email and / or attachments is strictly prohibited. If you have received this email in error, please notify Analytical Environmental Services Customer Service by telephone at (770) 457-8177 or by email at info@aesatlanta.com <<mailto:info@aesatlanta.com>> and delete the message. Thank you



June 07, 2017

Leona Miles
Atlanta Environmental Mgmt
2580 NE Expressway
Atlanta GA 30345

RE: DCSD - 9005

Dear Leona Miles:

Order No: 1705L61

Analytical Environmental Services, Inc. received 20 samples on 5/23/2017 11:52:00 AM for the analyses presented in following report.

No problems were encountered during the analyses. Additionally, all results for the associated Quality Control samples were within EPA and/or AES established limits. Any discrepancies associated with the analyses contained herein will be noted and submitted in the form of a project Case Narrative.

AES's accreditations are as follows:

-NELAC/Florida State Laboratory ID E87582 for analysis of Non-Potable Water, Solid & Chemical Materials, and Drinking Water Microbiology, effective 07/01/16-06/30/17.

State of Georgia, Department of Natural Resources ID #800 for analysis of Drinking Water Metals, effective 07/01/16-06/30/17 and Total Coliforms and E. coli, effective 04/25/17-04/24/20.

-NELAC/Louisiana Agency Interest No. 100818 for or analysis of Non-Potable Water and Solid & Chemical Materials, effective 07/01/16-06/30/17.

-AIHA-LAP, LLC Laboratory ID: 100671 for Industrial Hygiene samples (Organics, Metals, PCM Asbestos, Gravimetric), Environmental Lead (Paint, Soil, Dust Wipes, Air), and Environmental Microbiology (Fungal) Direct Examination, effective until 09/01/17.

These results relate only to the items tested. This report may only be reproduced in full.

If you have any questions regarding these test results, please feel free to call.

Sincerely,

Ioana Pacurar
Project Manager



COMPANY: Atlanta Environmental Management, Inc				ADDRESS: 2580 Northeast Expressway, NE Atlanta, GA 30345			ANALYSIS REQUESTED										<p>Visit our website www.aesatlanta.com to check on the status of your results, place bottle orders, etc.</p>		No # of Containers				
PHONE: (404) 329-9006				FAX: (404) 329-2057			Total Pb Method 200.8																
SAMPLED BY: Andi Jensen				SIGNATURE: <i>[Signature]</i>			PRESERVATION (See codes)										REMARKS						
#	SAMPLE ID			SAMPLED		Grab	Composite	Matrix (See codes)	I														
		DATE	TIME																				
1	9005-052317-DF-001-A			5/23/17	0658	X		DW	X														1
2	9005-052317-DF-001-B			5/23/17	0659	X		DW	X														1
3	9005-052317-DF-001-C			5/23/17	0700	X		DW	X														1
4	9005-052317-DF-002-A			5/23/17	0653	X		DW	X														1
5	9005-052317-DF-002-B			5/23/17	0654	X		DW	X														1
6	9005-052317-DF-003-A			5/23/17	0641	X		DW	X														1
7	9005-052317-DF-003-B			5/23/17	0642	X		DW	X														1
8	9005-052317-DF-004-A			5/23/17	0730	X		DW	X														1
9	9005-052317-DF-004-B			5/23/17	0731	X		DW	X														1
10	9005-052317-DF-005-A			5/23/17	0711	X		DW	X														1
11	9005-052317-DF-005-B			5/23/17	0713	X		DW	X														1
12	9005-052317-DF-005-C			5/23/17	0712	X		DW	X														1
13	9005-052317-DF-006-A			5/23/17	0648	X		DW	X														1
14	9005-052317-DF-006-B			5/23/17	0649	X		DW	X														1
15	9005-052317-Im-001-A			5/23/17	0737	X		DW	X														1
RELINQUISHED BY: 1: <i>[Signature]</i> 5/23/17 1152 2: 3:				RECEIVED BY: 1: <i>[Signature]</i> 5/23/17 1152 2: 3:				PROJECT INFORMATION										RECEIPT					
SPECIAL INSTRUCTIONS/COMMENTS: Preserve at the Lab per protocol				SHIPMENT METHOD OUT / / VIA: IN / / VIA: CLIENT <input checked="" type="radio"/> FedEx UPS MAIL COURIER GREYHOUND OTHER				PROJECT NAME: DCSD										Total # of Containers					
								PROJECT #: 1561-1601										Turnaround Time Request <input type="radio"/> Standard 5 Business Days <input type="radio"/> 2 Business Day Rush <input type="radio"/> Next Business Day Rush <input type="radio"/> Same Day Rush (auth req.) <input checked="" type="radio"/> Other: 10 business Days					
								SITE ADDRESS: 9005															
								SEND REPORT TO: Leona Miles and Tim Royer															
INVOICE TO: (IF DIFFERENT FROM ABOVE) leona-miles@aem-net.com; tim-royer@aem-net.com										STATE PROGRAM (if any):													
QUOTE #:										PO#:		E-mail? Y/N; Fax? Y/N											
DATA PACKAGE: I II III IV																							

SAMPLES RECEIVED AFTER 3PM OR SATURDAY ARE CONSIDERED AS RECEIVED ON THE NEXT BUSINESS DAY; IF NO TAT IS MARKED ON COC AES WILL PROCEED AS STANDARD TAT.

SAMPLES ARE DISPOSED OF 30 DAYS AFTER COMPLETION OF REPORT UNLESS OTHER ARRANGEMENTS ARE MADE.

Analytical Environmental Services, Inc

Date: 7-Jun-17

Client: Atlanta Environmental Mgmt	Client Sample ID: 9005-052317-DF-001-A
Project Name: DCSD - 9005	Collection Date: 5/23/2017 6:58:00 AM
Lab ID: 1705L61-001	Matrix: Drinking Water

Analyses	Result	Reporting Limit	Qual	Units	BatchID	Dilution Factor	Date Analyzed	Analyst
Trace Elements by ICP/MS E200.8								
				(E200.2)				
Lead	BRL	1.00		ug/L	243363	1	05/30/2017 21:43	JR

Qualifiers:

- * Value exceeds maximum contaminant level
- BRL Below reporting limit
- H Holding times for preparation or analysis exceeded
- N Analyte not NELAC certified
- B Analyte detected in the associated method blank
- > Greater than Result value

- E Estimated (value above quantitation range)
- S Spike Recovery outside limits due to matrix
- Narr See case narrative
- NC Not confirmed
- < Less than Result value
- J Estimated value detected below Reporting Limit

Analytical Environmental Services, Inc

Date: 7-Jun-17

Client: Atlanta Environmental Mgmt	Client Sample ID: 9005-052317-DF-001-B
Project Name: DCSD - 9005	Collection Date: 5/23/2017 6:59:00 AM
Lab ID: 1705L61-002	Matrix: Drinking Water

Analyses	Result	Reporting Limit	Qual	Units	BatchID	Dilution Factor	Date Analyzed	Analyst
Trace Elements by ICP/MS E200.8					(E200.2)			
Lead	BRL	1.00		ug/L	243363	1	05/30/2017 22:08	JR

Qualifiers:

- * Value exceeds maximum contaminant level
- BRL Below reporting limit
- H Holding times for preparation or analysis exceeded
- N Analyte not NELAC certified
- B Analyte detected in the associated method blank
- > Greater than Result value

- E Estimated (value above quantitation range)
- S Spike Recovery outside limits due to matrix
- Narr See case narrative
- NC Not confirmed
- < Less than Result value
- J Estimated value detected below Reporting Limit

Analytical Environmental Services, Inc

Date: 7-Jun-17

Client: Atlanta Environmental Mgmt	Client Sample ID: 9005-052317-DF-001-C
Project Name: DCSD - 9005	Collection Date: 5/23/2017 7:00:00 AM
Lab ID: 1705L61-003	Matrix: Drinking Water

Analyses	Result	Reporting Limit	Qual	Units	BatchID	Dilution Factor	Date Analyzed	Analyst
Trace Elements by ICP/MS E200.8					(E200.2)			
Lead	BRL	1.00		ug/L	243363	1	05/30/2017 22:11	JR

Qualifiers:

- * Value exceeds maximum contaminant level
- BRL Below reporting limit
- H Holding times for preparation or analysis exceeded
- N Analyte not NELAC certified
- B Analyte detected in the associated method blank
- > Greater than Result value

- E Estimated (value above quantitation range)
- S Spike Recovery outside limits due to matrix
- Narr See case narrative
- NC Not confirmed
- < Less than Result value
- J Estimated value detected below Reporting Limit

Analytical Environmental Services, Inc

Date: 7-Jun-17

Client: Atlanta Environmental Mgmt	Client Sample ID: 9005-052317-DF-002-A
Project Name: DCSD - 9005	Collection Date: 5/23/2017 6:53:00 AM
Lab ID: 1705L61-004	Matrix: Drinking Water

Analyses	Result	Reporting Limit	Qual	Units	BatchID	Dilution Factor	Date Analyzed	Analyst
Trace Elements by ICP/MS E200.8					(E200.2)			
Lead	3.55	1.00		ug/L	243363	1	05/30/2017 22:15	JR

Qualifiers:

- * Value exceeds maximum contaminant level
- BRL Below reporting limit
- H Holding times for preparation or analysis exceeded
- N Analyte not NELAC certified
- B Analyte detected in the associated method blank
- > Greater than Result value

- E Estimated (value above quantitation range)
- S Spike Recovery outside limits due to matrix
- Narr See case narrative
- NC Not confirmed
- < Less than Result value
- J Estimated value detected below Reporting Limit

Analytical Environmental Services, Inc

Date: 7-Jun-17

Client: Atlanta Environmental Mgmt	Client Sample ID: 9005-052317-DF-002-B
Project Name: DCSD - 9005	Collection Date: 5/23/2017 6:54:00 AM
Lab ID: 1705L61-005	Matrix: Drinking Water

Analyses	Result	Reporting Limit	Qual	Units	BatchID	Dilution Factor	Date Analyzed	Analyst
Trace Elements by ICP/MS E200.8					(E200.2)			
Lead	1.03	1.00		ug/L	243363	1	05/30/2017 22:18	JR

Qualifiers:

- * Value exceeds maximum contaminant level
- BRL Below reporting limit
- H Holding times for preparation or analysis exceeded
- N Analyte not NELAC certified
- B Analyte detected in the associated method blank
- > Greater than Result value

- E Estimated (value above quantitation range)
- S Spike Recovery outside limits due to matrix
- Narr See case narrative
- NC Not confirmed
- < Less than Result value
- J Estimated value detected below Reporting Limit

Analytical Environmental Services, Inc

Date: 7-Jun-17

Client: Atlanta Environmental Mgmt	Client Sample ID: 9005-052317-DF-003-A
Project Name: DCSD - 9005	Collection Date: 5/23/2017 6:41:00 AM
Lab ID: 1705L61-006	Matrix: Drinking Water

Analyses	Result	Reporting Limit	Qual	Units	BatchID	Dilution Factor	Date Analyzed	Analyst
Trace Elements by ICP/MS E200.8					(E200.2)			
Lead	BRL	1.00		ug/L	243363	1	05/30/2017 22:22	JR

Qualifiers:

- * Value exceeds maximum contaminant level
- BRL Below reporting limit
- H Holding times for preparation or analysis exceeded
- N Analyte not NELAC certified
- B Analyte detected in the associated method blank
- > Greater than Result value

- E Estimated (value above quantitation range)
- S Spike Recovery outside limits due to matrix
- Narr See case narrative
- NC Not confirmed
- < Less than Result value
- J Estimated value detected below Reporting Limit

Analytical Environmental Services, Inc

Date: 7-Jun-17

Client: Atlanta Environmental Mgmt	Client Sample ID: 9005-052317-DF-003-B
Project Name: DCSD - 9005	Collection Date: 5/23/2017 6:42:00 AM
Lab ID: 1705L61-007	Matrix: Drinking Water

Analyses	Result	Reporting Limit	Qual	Units	BatchID	Dilution Factor	Date Analyzed	Analyst
Trace Elements by ICP/MS E200.8					(E200.2)			
Lead	BRL	1.00		ug/L	243363	1	05/30/2017 22:25	JR

Qualifiers:

- * Value exceeds maximum contaminant level
- BRL Below reporting limit
- H Holding times for preparation or analysis exceeded
- N Analyte not NELAC certified
- B Analyte detected in the associated method blank
- > Greater than Result value

- E Estimated (value above quantitation range)
- S Spike Recovery outside limits due to matrix
- Narr See case narrative
- NC Not confirmed
- < Less than Result value
- J Estimated value detected below Reporting Limit

Analytical Environmental Services, Inc

Date: 7-Jun-17

Client: Atlanta Environmental Mgmt	Client Sample ID: 9005-052317-DF-004-A
Project Name: DCSD - 9005	Collection Date: 5/23/2017 7:30:00 AM
Lab ID: 1705L61-008	Matrix: Drinking Water

Analyses	Result	Reporting Limit	Qual	Units	BatchID	Dilution Factor	Date Analyzed	Analyst
Trace Elements by ICP/MS E200.8					(E200.2)			
Lead	BRL	1.00		ug/L	243363	1	05/30/2017 22:28	JR

Qualifiers:

- * Value exceeds maximum contaminant level
- BRL Below reporting limit
- H Holding times for preparation or analysis exceeded
- N Analyte not NELAC certified
- B Analyte detected in the associated method blank
- > Greater than Result value

- E Estimated (value above quantitation range)
- S Spike Recovery outside limits due to matrix
- Narr See case narrative
- NC Not confirmed
- < Less than Result value
- J Estimated value detected below Reporting Limit

Analytical Environmental Services, Inc

Date: 7-Jun-17

Client: Atlanta Environmental Mgmt	Client Sample ID: 9005-052317-DF-004-B
Project Name: DCSD - 9005	Collection Date: 5/23/2017 7:31:00 AM
Lab ID: 1705L61-009	Matrix: Drinking Water

Analyses	Result	Reporting Limit	Qual	Units	BatchID	Dilution Factor	Date Analyzed	Analyst
Trace Elements by ICP/MS E200.8					(E200.2)			
Lead	BRL	1.00		ug/L	243363	1	05/30/2017 22:39	JR

Qualifiers:

- * Value exceeds maximum contaminant level
- BRL Below reporting limit
- H Holding times for preparation or analysis exceeded
- N Analyte not NELAC certified
- B Analyte detected in the associated method blank
- > Greater than Result value

- E Estimated (value above quantitation range)
- S Spike Recovery outside limits due to matrix
- Narr See case narrative
- NC Not confirmed
- < Less than Result value
- J Estimated value detected below Reporting Limit

Analytical Environmental Services, Inc

Date: 7-Jun-17

Client: Atlanta Environmental Mgmt	Client Sample ID: 9005-052317-DF-005-A
Project Name: DCSD - 9005	Collection Date: 5/23/2017 7:11:00 AM
Lab ID: 1705L61-010	Matrix: Drinking Water

Analyses	Result	Reporting Limit	Qual	Units	BatchID	Dilution Factor	Date Analyzed	Analyst
Trace Elements by ICP/MS E200.8					(E200.2)			
Lead	20.2	1.00		ug/L	243363	1	05/30/2017 22:42	JR

Qualifiers:

- * Value exceeds maximum contaminant level
- BRL Below reporting limit
- H Holding times for preparation or analysis exceeded
- N Analyte not NELAC certified
- B Analyte detected in the associated method blank
- > Greater than Result value

- E Estimated (value above quantitation range)
- S Spike Recovery outside limits due to matrix
- Narr See case narrative
- NC Not confirmed
- < Less than Result value
- J Estimated value detected below Reporting Limit

Analytical Environmental Services, Inc

Date: 7-Jun-17

Client: Atlanta Environmental Mgmt	Client Sample ID: 9005-052317-DF-005-B
Project Name: DCSD - 9005	Collection Date: 5/23/2017 7:13:00 AM
Lab ID: 1705L61-011	Matrix: Drinking Water

Analyses	Result	Reporting Limit	Qual	Units	BatchID	Dilution Factor	Date Analyzed	Analyst
Trace Elements by ICP/MS E200.8					(E200.2)			
Lead	8.96	1.00		ug/L	243363	1	05/30/2017 22:01	JR

Qualifiers:

- * Value exceeds maximum contaminant level
- BRL Below reporting limit
- H Holding times for preparation or analysis exceeded
- N Analyte not NELAC certified
- B Analyte detected in the associated method blank
- > Greater than Result value

- E Estimated (value above quantitation range)
- S Spike Recovery outside limits due to matrix
- Narr See case narrative
- NC Not confirmed
- < Less than Result value
- J Estimated value detected below Reporting Limit

Analytical Environmental Services, Inc

Date: 7-Jun-17

Client: Atlanta Environmental Mgmt	Client Sample ID: 9005-052317-DF-005-C
Project Name: DCSD - 9005	Collection Date: 5/23/2017 7:12:00 AM
Lab ID: 1705L61-012	Matrix: Drinking Water

Analyses	Result	Reporting Limit	Qual	Units	BatchID	Dilution Factor	Date Analyzed	Analyst
Trace Elements by ICP/MS E200.8					(E200.2)			
Lead	19.8	1.00		ug/L	243363	1	05/30/2017 22:46	JR

Qualifiers:

- * Value exceeds maximum contaminant level
- BRL Below reporting limit
- H Holding times for preparation or analysis exceeded
- N Analyte not NELAC certified
- B Analyte detected in the associated method blank
- > Greater than Result value

- E Estimated (value above quantitation range)
- S Spike Recovery outside limits due to matrix
- Narr See case narrative
- NC Not confirmed
- < Less than Result value
- J Estimated value detected below Reporting Limit

Analytical Environmental Services, Inc

Date: 7-Jun-17

Client: Atlanta Environmental Mgmt	Client Sample ID: 9005-052317-DF-006-A
Project Name: DCSD - 9005	Collection Date: 5/23/2017 6:48:00 AM
Lab ID: 1705L61-013	Matrix: Drinking Water

Analyses	Result	Reporting Limit	Qual	Units	BatchID	Dilution Factor	Date Analyzed	Analyst
Trace Elements by ICP/MS E200.8					(E200.2)			
Lead	BRL	1.00		ug/L	243363	1	05/30/2017 22:49	JR

Qualifiers:

- * Value exceeds maximum contaminant level
- BRL Below reporting limit
- H Holding times for preparation or analysis exceeded
- N Analyte not NELAC certified
- B Analyte detected in the associated method blank
- > Greater than Result value

- E Estimated (value above quantitation range)
- S Spike Recovery outside limits due to matrix
- Narr See case narrative
- NC Not confirmed
- < Less than Result value
- J Estimated value detected below Reporting Limit

Analytical Environmental Services, Inc

Date: 7-Jun-17

Client: Atlanta Environmental Mgmt	Client Sample ID: 9005-052317-DF-006-B
Project Name: DCSD - 9005	Collection Date: 5/23/2017 6:49:00 AM
Lab ID: 1705L61-014	Matrix: Drinking Water

Analyses	Result	Reporting Limit	Qual	Units	BatchID	Dilution Factor	Date Analyzed	Analyst
Trace Elements by ICP/MS E200.8					(E200.2)			
Lead	BRL	1.00		ug/L	243363	1	05/30/2017 22:53	JR

Qualifiers:

- * Value exceeds maximum contaminant level
- BRL Below reporting limit
- H Holding times for preparation or analysis exceeded
- N Analyte not NELAC certified
- B Analyte detected in the associated method blank
- > Greater than Result value

- E Estimated (value above quantitation range)
- S Spike Recovery outside limits due to matrix
- Narr See case narrative
- NC Not confirmed
- < Less than Result value
- J Estimated value detected below Reporting Limit

Analytical Environmental Services, Inc

Date: 7-Jun-17

Client: Atlanta Environmental Mgmt	Client Sample ID: 9005-052317-IM-001-A
Project Name: DCSD - 9005	Collection Date: 5/23/2017 7:37:00 AM
Lab ID: 1705L61-015	Matrix: Drinking Water

Analyses	Result	Reporting Limit	Qual	Units	BatchID	Dilution Factor	Date Analyzed	Analyst
Trace Elements by ICP/MS E200.8					(E200.2)			
Lead	BRL	1.00		ug/L	243363	1	05/30/2017 22:56	JR

Qualifiers:

- * Value exceeds maximum contaminant level
- BRL Below reporting limit
- H Holding times for preparation or analysis exceeded
- N Analyte not NELAC certified
- B Analyte detected in the associated method blank
- > Greater than Result value

- E Estimated (value above quantitation range)
- S Spike Recovery outside limits due to matrix
- Narr See case narrative
- NC Not confirmed
- < Less than Result value
- J Estimated value detected below Reporting Limit

Analytical Environmental Services, Inc

Date: 7-Jun-17

Client: Atlanta Environmental Mgmt	Client Sample ID: 9005-052317-OT-001-A
Project Name: DCSD - 9005	Collection Date: 5/23/2017 6:33:00 AM
Lab ID: 1705L61-016	Matrix: Drinking Water

Analyses	Result	Reporting Limit	Qual	Units	BatchID	Dilution Factor	Date Analyzed	Analyst
Trace Elements by ICP/MS E200.8					(E200.2)			
Lead	1.12	1.00		ug/L	243363	1	05/30/2017 23:00	JR

Qualifiers:

- * Value exceeds maximum contaminant level
- BRL Below reporting limit
- H Holding times for preparation or analysis exceeded
- N Analyte not NELAC certified
- B Analyte detected in the associated method blank
- > Greater than Result value

- E Estimated (value above quantitation range)
- S Spike Recovery outside limits due to matrix
- Narr See case narrative
- NC Not confirmed
- < Less than Result value
- J Estimated value detected below Reporting Limit

Analytical Environmental Services, Inc

Date: 7-Jun-17

Client: Atlanta Environmental Mgmt	Client Sample ID: 9005-052317-OT-001-B
Project Name: DCSD - 9005	Collection Date: 5/23/2017 6:34:00 AM
Lab ID: 1705L61-017	Matrix: Drinking Water

Analyses	Result	Reporting Limit	Qual	Units	BatchID	Dilution Factor	Date Analyzed	Analyst
Trace Elements by ICP/MS E200.8					(E200.2)			
Lead	BRL	1.00		ug/L	243363	1	05/30/2017 23:03	JR

Qualifiers:

- * Value exceeds maximum contaminant level
- BRL Below reporting limit
- H Holding times for preparation or analysis exceeded
- N Analyte not NELAC certified
- B Analyte detected in the associated method blank
- > Greater than Result value

- E Estimated (value above quantitation range)
- S Spike Recovery outside limits due to matrix
- Narr See case narrative
- NC Not confirmed
- < Less than Result value
- J Estimated value detected below Reporting Limit

Analytical Environmental Services, Inc

Date: 7-Jun-17

Client: Atlanta Environmental Mgmt	Client Sample ID: 9005-052317-RS-001-A
Project Name: DCSD - 9005	Collection Date: 5/23/2017 7:33:00 AM
Lab ID: 1705L61-018	Matrix: Drinking Water

Analyses	Result	Reporting Limit	Qual	Units	BatchID	Dilution Factor	Date Analyzed	Analyst
Trace Elements by ICP/MS E200.8					(E200.2)			
Lead	1.11	1.00		ug/L	243363	1	05/30/2017 23:07	JR

Qualifiers:

- * Value exceeds maximum contaminant level
- BRL Below reporting limit
- H Holding times for preparation or analysis exceeded
- N Analyte not NELAC certified
- B Analyte detected in the associated method blank
- > Greater than Result value

- E Estimated (value above quantitation range)
- S Spike Recovery outside limits due to matrix
- Narr See case narrative
- NC Not confirmed
- < Less than Result value
- J Estimated value detected below Reporting Limit

Analytical Environmental Services, Inc

Date: 7-Jun-17

Client: Atlanta Environmental Mgmt	Client Sample ID: 9005-052317-RS-001-B
Project Name: DCSD - 9005	Collection Date: 5/23/2017 7:34:00 AM
Lab ID: 1705L61-019	Matrix: Drinking Water

Analyses	Result	Reporting Limit	Qual	Units	BatchID	Dilution Factor	Date Analyzed	Analyst
Trace Elements by ICP/MS E200.8					(E200.2)			
Lead	BRL	1.00		ug/L	243363	1	05/30/2017 23:10	JR

Qualifiers:

- * Value exceeds maximum contaminant level
- BRL Below reporting limit
- H Holding times for preparation or analysis exceeded
- N Analyte not NELAC certified
- B Analyte detected in the associated method blank
- > Greater than Result value

- E Estimated (value above quantitation range)
- S Spike Recovery outside limits due to matrix
- Narr See case narrative
- NC Not confirmed
- < Less than Result value
- J Estimated value detected below Reporting Limit

Analytical Environmental Services, Inc

Date: 7-Jun-17

Client: Atlanta Environmental Mgmt	Client Sample ID: 9005-052317-SC-001-A
Project Name: DCSD - 9005	Collection Date: 5/23/2017 6:24:00 AM
Lab ID: 1705L61-020	Matrix: Drinking Water

Analyses	Result	Reporting Limit	Qual	Units	BatchID	Dilution Factor	Date Analyzed	Analyst
Trace Elements by ICP/MS E200.8					(E200.2)			
Lead	BRL	1.00		ug/L	243363	1	05/30/2017 23:21	JR

Qualifiers:

- * Value exceeds maximum contaminant level
- BRL Below reporting limit
- H Holding times for preparation or analysis exceeded
- N Analyte not NELAC certified
- B Analyte detected in the associated method blank
- > Greater than Result value

- E Estimated (value above quantitation range)
- S Spike Recovery outside limits due to matrix
- Narr See case narrative
- NC Not confirmed
- < Less than Result value
- J Estimated value detected below Reporting Limit



SAMPLE/COOLER RECEIPT CHECKLIST

Clear

Save as

1. Client Name: Atlanta Environmental Mgmt

AES Work Order Number: 1705L61

2. Carrier: FedEx [] UPS [] USPS [] Client [x] Courier [] Other []

Table with 5 columns: Question, Yes, No, N/A, Details, Comments. Rows 3-12 covering shipping container, seals, temperature, and COC.

13. Cooler 1 Temperature 3.3 °C Cooler 2 Temperature °C Cooler 3 Temperature °C Cooler 4 Temperature °C
14. Cooler 5 Temperature °C Cooler 6 Temperature °C Cooler 7 Temperature °C Cooler 8 Temperature °C

15. Comments: I certify that I have completed sections 1-15 (dated initials). MJ 5/23/17

Table with 5 columns: Question, Yes, No, N/A, Details, Comments. Rows 16-26 covering sample containers, seals, labels, analyses, and trip blanks.

27. Comments: I certify that I have completed sections 16-27 (dated initials). TR 5/23/17

Table with 5 columns: Question, Yes, No, N/A, Details, Comments. Rows 28-30 covering chemical preservation and pH adjustment.

I certify that I have completed sections 28-30 (dated initials). TR 5/23/17

Locked

Client: Atlanta Environmental Mgmt
 Project Name: DCSD - 9005
 Workorder: 1705L61

ANALYTICAL QC SUMMARY REPORT

BatchID: 243363

Sample ID: MB-243363	Client ID:	Units: ug/L	Prep Date: 05/30/2017	Run No: 344291							
SampleType: MBLK	TestCode: Trace Elements by ICP/MS E200.8	BatchID: 243363	Analysis Date: 05/30/2017	Seq No: 7552773							
Analyte	Result	RPT Limit	SPK value	SPK Ref Val	%REC	Low Limit	High Limit	RPD Ref Val	%RPD	RPD Limit	Qual

Lead BRL 1.00

Sample ID: LCS-243363	Client ID:	Units: ug/L	Prep Date: 05/30/2017	Run No: 344291							
SampleType: LCS	TestCode: Trace Elements by ICP/MS E200.8	BatchID: 243363	Analysis Date: 05/30/2017	Seq No: 7552774							
Analyte	Result	RPT Limit	SPK value	SPK Ref Val	%REC	Low Limit	High Limit	RPD Ref Val	%RPD	RPD Limit	Qual

Lead 96.10 1.00 100.0 96.1 85 115

Sample ID: 1705L61-001AMS	Client ID: 9005-052317-DF-001-A	Units: ug/L	Prep Date: 05/30/2017	Run No: 344291							
SampleType: MS	TestCode: Trace Elements by ICP/MS E200.8	BatchID: 243363	Analysis Date: 05/30/2017	Seq No: 7552778							
Analyte	Result	RPT Limit	SPK value	SPK Ref Val	%REC	Low Limit	High Limit	RPD Ref Val	%RPD	RPD Limit	Qual

Lead 94.39 1.00 100.0 0.7697 93.6 70 130

Sample ID: 1705L61-011AMS	Client ID: 9005-052317-DF-005-B	Units: ug/L	Prep Date: 05/30/2017	Run No: 344291							
SampleType: MS	TestCode: Trace Elements by ICP/MS E200.8	BatchID: 243363	Analysis Date: 05/30/2017	Seq No: 7552783							
Analyte	Result	RPT Limit	SPK value	SPK Ref Val	%REC	Low Limit	High Limit	RPD Ref Val	%RPD	RPD Limit	Qual

Lead 107.4 1.00 100.0 8.959 98.4 70 130

Sample ID: 1705L61-001AMSD	Client ID: 9005-052317-DF-001-A	Units: ug/L	Prep Date: 05/30/2017	Run No: 344291							
SampleType: MSD	TestCode: Trace Elements by ICP/MS E200.8	BatchID: 243363	Analysis Date: 05/30/2017	Seq No: 7552781							
Analyte	Result	RPT Limit	SPK value	SPK Ref Val	%REC	Low Limit	High Limit	RPD Ref Val	%RPD	RPD Limit	Qual

Lead 92.38 1.00 100.0 0.7697 91.6 70 130 94.39 2.15 20

Qualifiers: > Greater than Result value < Less than Result value B Analyte detected in the associated method blank
 BRL Below reporting limit E Estimated (value above quantitation range) H Holding times for preparation or analysis exceeded
 J Estimated value detected below Reporting Limit N Analyte not NELAC certified R RPD outside limits due to matrix
 Rpt Lim Reporting Limit S Spike Recovery outside limits due to matrix

Leona Miles

From: NoReply@aesatlanta.net
Sent: Friday, October 20, 2017 1:41 PM
To: leona-miles@aem-net.com; tim-royer@aem-net.com
Subject: DCSD - 9005
Attachments: 1710A06_REPORT.pdf; 1710A06Invoice.pdf

Please see attached. If you have any questions or need further assistance please contact your project manager at 770-457-8177.

AES Reporting System

ANALYTICAL ENVIRONMENTAL SERVICES, INC.
3080 Presidential Drive ATLANTA, GA 30340
Tel: 770-457-8177 Fax: 770-457-8188
<http://www.aesatlanta.com>

NOTICE OF CONFIDENTIALITY: The information in this email and / or attachments may be legally privileged and is confidential information intended for the use of the individual or entity named in the email address. If the reader of this message is not the intended recipient, you are hereby notified that any use, dissemination, distribution, or copy of this email and / or attachments is strictly prohibited. If you have received this email in error, please notify Analytical Environmental Services Customer Service by telephone at (770) 457-8177 or by email at info@aesatlanta.com <<mailto:info@aesatlanta.com>> and delete the message. Thank you



ANALYTICAL ENVIRONMENTAL SERVICES, INC.

October 20, 2017

Leona Miles
Atlanta Environmental Mgmt
2580 NE Expressway
Atlanta GA 30345

RE: DCSD - 9005

Dear Leona Miles:

Order No: 1710A06

Analytical Environmental Services, Inc. received 2 samples on 10/11/2017 8:40:00 AM for the analyses presented in following report.

No problems were encountered during the analyses. Additionally, all results for the associated Quality Control samples were within EPA and/or AES established limits. Any discrepancies associated with the analyses contained herein will be noted and submitted in the form of a project Case Narrative.

AES's accreditations are as follows:

-NELAP/State of Florida Laboratory ID E87582 for analysis of Non-Potable Water, Solid & Chemical Materials, Air & Emissions Volatile Organics, and Drinking Water Microbiology & Metals, effective 07/01/17-06/30/18.

State of Georgia, Department of Natural Resources ID #800 for analysis of Drinking Water Metals, effective 07/01/17-06/30/18 and Total Coliforms/ E. coli, effective 04/25/17-04/24/20.

-NELAP/Louisiana Agency Interest No. 100818 for or analysis of Non-Potable Water and Solid & Chemical Materials, effective 07/01/17-06/30/18.

-AIHA-LAP, LLC Laboratory ID: 100671 for Industrial Hygiene samples (Organics, Metals, PCM Asbestos, Gravimetric), Environmental Lead (Paint, Soil, Dust Wipes, Air), and Environmental Microbiology (Fungal) Direct Examination, effective until 11/01/17.

These results relate only to the items tested. This report may only be reproduced in full.

If you have any questions regarding these test results, please feel free to call.

Sincerely,

Ioana Pacurar
Project Manager



ANALYTICAL ENVIRONMENTAL SERVICES, INC

3080 Presidential Drive, Atlanta GA 30340-3704

TEL.: (770) 457-8177 / TOLL-FREE (800) 972-4889 / FAX: (770) 457-8188

CHAIN OF CUSTODY

Work Order: 1710400

Date: 10/11/17 Page 1 of 1

COMPANY: Atlanta Environmental Management Inc		ADDRESS: 2580 Northeast Expressway NE Atlanta, GA 30345				ANALYSIS REQUESTED										Visit our website www.aesatlanta.com to check on the status of your results, place bottle orders, etc.	No # of Containers								
PHONE: 404-329-9006		FAX: 404-329-2057				Lead (200.8)	PRESERVATION (See codes)											REMARKS							
SAMPLED BY: <i>Andy Jensen</i>		SIGNATURE: <i>Meese</i>																							
#	SAMPLE ID	SAMPLED		Grab	Composite	Matrix (See codes)	PRESERVATION (See codes)										REMARKS								
		DATE	TIME																						
1	9005-101117-DF-005-A	10/11/17	0516	X		DW	X																		
2	9005-101117-DF-005-B	10/11/17	0517	X		DW	X																		
3																									
4																									
5																									
6																									
7																									
8																									
9																									
10																									
11																									
12																									
13																									
14																									
15																									

RELINQUISHED BY 1: <i>Meese</i>	DATE/TIME 1: 10/11/17 0840	RECEIVED BY 1: <i>Handwritten</i>	DATE/TIME 1: 10/11/17 840	PROJECT INFORMATION			RECEIPT	
				PROJECT NAME:	DCSD			Total # of Containers
				PROJECT #:	1561-1601			<input type="radio"/> Turnaround Time Request <input type="radio"/> Standard 5 Business Days <input type="radio"/> 2 Business Day Rush <input type="radio"/> Next Business Day Rush <input type="radio"/> Same Day Rush (auth req.) <input checked="" type="radio"/> Other: 10 business Days
				SITE ADDRESS:	9005			
				SEND REPORT TO:	leona-miles@aem-net.com			
SPECIAL INSTRUCTIONS/COMMENTS: <i>Preserve at lab</i>		SHIPMENT METHOD		INVOICE TO: Leona Miles (IF DIFFERENT FROM ABOVE)	STATE PROGRAM (if any):			E-mail? Y/N; Fax? Y/N
		OUT	VIA:	QUOTE #:	PO#:		DATA PACKAGE: I II III IV	
		IN	VIA:					
		CLIENT	FedEx UPS MAIL COURIER					
		GREYHOUND	OTHER					

SAMPLES RECEIVED AFTER 3PM OR SATURDAY ARE CONSIDERED AS RECEIVED ON THE NEXT BUSINESS DAY; IF NO TAT IS MARKED ON COC AES WILL PROCEED AS STANDARD TAT.
 SAMPLES ARE DISPOSED OF 30 DAYS AFTER COMPLETION OF REPORT UNLESS OTHER ARRANGEMENTS ARE MADE.

MATRIX CODES: A = Air GW = Groundwater SE = Sediment SO = Soil SW = Surface Water DW = Drinking Water W = Water (Blanks) O = Other (specify)
 PRESERVATIVE CODES: H+I = Hydrochloric acid + ice I = Ice only N = Nitric acid S+I = Sulfuric acid + ice S/M+I = Sodium Bisulfate/Methanol + ice O = Other (specify) NA = None

Analytical Environmental Services, Inc

Date: 20-Oct-17

Client: Atlanta Environmental Mgmt	Client Sample ID: 9005-101117-DF-005-A
Project Name: DCSD - 9005	Collection Date: 10/11/2017 5:16:00 AM
Lab ID: 1710A06-001	Matrix: Drinking Water

Analyses	Result	Reporting Limit	Qual	Units	BatchID	Dilution Factor	Date Analyzed	Analyst
Trace Elements by ICP/MS E200.8								
					(E200.2)			
Lead	1.27	1.00		ug/L	249743	1	10/18/2017 16:06	JR

Qualifiers:

- * Value exceeds maximum contaminant level
- BRL Below reporting limit
- H Holding times for preparation or analysis exceeded
- N Analyte not NELAC certified
- B Analyte detected in the associated method blank
- > Greater than Result value

- E Estimated (value above quantitation range)
- S Spike Recovery outside limits due to matrix
- Narr See case narrative
- NC Not confirmed
- < Less than Result value
- J Estimated value detected below Reporting Limit

Analytical Environmental Services, Inc

Date: 20-Oct-17

Client: Atlanta Environmental Mgmt	Client Sample ID: 9005-101117-DF-005-B
Project Name: DCSD - 9005	Collection Date: 10/11/2017 5:17:00 AM
Lab ID: 1710A06-002	Matrix: Drinking Water

Analyses	Result	Reporting Limit	Qual	Units	BatchID	Dilution Factor	Date Analyzed	Analyst
Trace Elements by ICP/MS E200.8					(E200.2)			
Lead	1.50	1.00		ug/L	249743	1	10/18/2017 16:09	JR

Qualifiers:

- * Value exceeds maximum contaminant level
- BRL Below reporting limit
- H Holding times for preparation or analysis exceeded
- N Analyte not NELAC certified
- B Analyte detected in the associated method blank
- > Greater than Result value

- E Estimated (value above quantitation range)
- S Spike Recovery outside limits due to matrix
- Narr See case narrative
- NC Not confirmed
- < Less than Result value
- J Estimated value detected below Reporting Limit

SAMPLE/COOLER RECEIPT CHECKLIST

1. Client Name: _____

AES Work Order Number: _____

2. Carrier: FedEx UPS USPS Client Courier Other _____

	Yes	No	N/A	Details	Comments
3. Shipping container/cooler received in good condition?				damaged <input type="checkbox"/> leaking <input type="checkbox"/> other <input type="checkbox"/>	
4. Custody seals present on shipping container?					
5. Custody seals intact on shipping container?					
6. Temperature blanks present?					
7. Cooler temperature(s) within limits of 0-6°C? [See item 13 and 14 for temperature recordings.]				Cooling initiated for recently collected samples / ice present <input type="checkbox"/>	
8. Chain of Custody (COC) present?					
9. Chain of Custody signed, dated, and timed when relinquished and received?					
10. Sampler name and/or signature on COC?					
11. Were all samples received within holding time?					
12. TAT marked on the COC?				If no TAT indicated, proceeded with standard TAT per Terms & Conditions. <input type="checkbox"/>	

13. Cooler 1 Temperature _____ °C Cooler 2 Temperature _____ °C Cooler 3 Temperature _____ °C Cooler 4 Temperature _____ °C
 Cooler 5 Temperature _____ °C Cooler 6 Temperature _____ °C Cooler 7 Temperature _____ °C Cooler 8 Temperature _____ °C

15. Comments: _____

I certify that I have completed sections 1-15 (dated initials). _____

	Yes	No	N/A	Details	Comments
16. Were sample containers intact upon receipt?					
17. Custody seals present on sample containers?					
18. Custody seals intact on sample containers?					
19. Do sample container labels match the COC?				incomplete info <input type="checkbox"/> illegible <input type="checkbox"/> no label <input type="checkbox"/> other <input type="checkbox"/>	
20. Are analyses requested indicated on the COC?					
21. Were all of the samples listed on the COC received?				samples received but not listed on COC <input type="checkbox"/> samples listed on COC not received <input type="checkbox"/>	
22. Was the sample collection date/time noted?					
23. Did we receive sufficient sample volume for indicated analyses?					
24. Were samples received in appropriate containers?					
25. Were VOA samples received without headspace (< 1/4" bubble)?					
26. Were trip blanks submitted?				listed on COC <input type="checkbox"/> not listed on COC <input type="checkbox"/>	

27. Comments: _____

I certify that I have completed sections 16-27 (dated initials). _____

	Yes	No	N/A	Details	Comments
28. Have containers needing chemical preservation been checked? *					
29. Containers meet preservation guidelines?					
30. Was pH adjusted at Sample Receipt?					

I certify that I have completed sections 28-30 (dated initials). _____

Client: Atlanta Environmental Mgmt
Project Name: DCSD - 9005
Workorder: 1710A06

ANALYTICAL QC SUMMARY REPORT

BatchID: 249743

Sample ID: MB-249743	Client ID:	Units: ug/L	Prep Date: 10/16/2017	Run No: 354763							
SampleType: MBLK	TestCode: Trace Elements by ICP/MS E200.8	BatchID: 249743	Analysis Date: 10/18/2017	Seq No: 7808783							
Analyte	Result	RPT Limit	SPK value	SPK Ref Val	%REC	Low Limit	High Limit	RPD Ref Val	%RPD	RPD Limit	Qual

Lead BRL 1.00

Sample ID: LCS-249743	Client ID:	Units: ug/L	Prep Date: 10/16/2017	Run No: 354763							
SampleType: LCS	TestCode: Trace Elements by ICP/MS E200.8	BatchID: 249743	Analysis Date: 10/18/2017	Seq No: 7808784							
Analyte	Result	RPT Limit	SPK value	SPK Ref Val	%REC	Low Limit	High Limit	RPD Ref Val	%RPD	RPD Limit	Qual

Lead 85.53 1.00 100.0 85.5 85 115

Sample ID: 1710999-001AMS	Client ID:	Units: ug/L	Prep Date: 10/16/2017	Run No: 354763							
SampleType: MS	TestCode: Trace Elements by ICP/MS E200.8	BatchID: 249743	Analysis Date: 10/18/2017	Seq No: 7808786							
Analyte	Result	RPT Limit	SPK value	SPK Ref Val	%REC	Low Limit	High Limit	RPD Ref Val	%RPD	RPD Limit	Qual

Lead 105.7 1.00 100.0 3.413 102 70 130

Sample ID: 1710B81-001AMS	Client ID:	Units: ug/L	Prep Date: 10/16/2017	Run No: 354763							
SampleType: MS	TestCode: Trace Elements by ICP/MS E200.8	BatchID: 249743	Analysis Date: 10/18/2017	Seq No: 7808789							
Analyte	Result	RPT Limit	SPK value	SPK Ref Val	%REC	Low Limit	High Limit	RPD Ref Val	%RPD	RPD Limit	Qual

Lead 99.92 1.00 100.0 99.9 70 130

Sample ID: 1710999-001AMSD	Client ID:	Units: ug/L	Prep Date: 10/16/2017	Run No: 354763							
SampleType: MSD	TestCode: Trace Elements by ICP/MS E200.8	BatchID: 249743	Analysis Date: 10/18/2017	Seq No: 7808787							
Analyte	Result	RPT Limit	SPK value	SPK Ref Val	%REC	Low Limit	High Limit	RPD Ref Val	%RPD	RPD Limit	Qual

Lead 106.9 1.00 100.0 3.413 104 70 130 105.7 1.15 20

Qualifiers: > Greater than Result value < Less than Result value B Analyte detected in the associated method blank
 BRL Below reporting limit E Estimated (value above quantitation range) H Holding times for preparation or analysis exceeded
 J Estimated value detected below Reporting Limit N Analyte not NELAC certified R RPD outside limits due to matrix
 Rpt Lim Reporting Limit S Spike Recovery outside limits due to matrix