



February 9, 2017

**Via E-Mail: Joshua\_I\_williams@dekalbschoolsga.org**

Mr. Joshua L. Williams, MBA, MSM, PMP  
Chief Operations Officer  
DeKalb County School District  
Operations Division  
Sam Moss Service Center  
1780 Montreal Road  
Tucker, Georgia 30084

**Re: Lead in Drinking Water Sample Results  
DeKalb Elementary School of the Arts (Facility ID #0101)  
3131 Old Rockbridge Rd., Avondale Estates, Georgia 30002  
AEM Project No. 1561-1601**

Dear Mr. Williams:

Atlanta Environmental Management, Inc. (AEM) is pleased to provide the DeKalb County School District (DCSD) an electronic copy of the Lead in Drinking Water Sample Results for DeKalb Elementary School of the Arts (Facility ID #0101). Samples were collected on January 25, 2017, and analytical results were received from Analytical Environmental Services, Inc., on February 8, 2017.

**FINDINGS**



AEM collected 60 drinking water samples from 31 sources at DeKalb Elementary School of the Arts (Facility ID #0101), including two duplicate samples. A description of the drinking water outlets sampled and a summary of sample analytical results are provided in the attached table.

None of the samples collected and analyzed contained lead at a concentration equal to or above EPA's action level of 15 parts per billion.

We appreciate your selection of AEM for this project. If you have any questions, please do not hesitate to contact us.

Sincerely,

**Atlanta Environmental Management, Inc.**

  
Leona Miles, CHMM  
Senior Project Manager  
  
Janet T. Hart  
President

/krf

cc: Daniel Drake (DCSD)  
Tracee Hill (DCSD)  
Sandra Glen (DeKalb County Watershed Management)  
Ryan Cira (DeKalb Board of Health)

Attachment: Table

**Table 1. Summary of Lead in Drinking Water Laboratory Analytical Results**  
**DeKalb Elementary School of the Arts**  
**3131 Old Rockbridge Road, Avondale Estates, GA 30002**



Sample ID*	Sample Location Description	Sample Date & Time	Lead Test Results (ppb)
0101-012517-DF-002-A	Initial Draw Sample; Upper Left Elkay Drinking Fountain in Girl's Locker Rm G10; Wall-mounted	01/25/17 5:28 AM	None Detected
0101-012517-DF-002-B	Flush Sample; Upper Left Elkay Drinking Fountain in Girl's Locker Rm G10; Wall-mounted	01/25/17 5:29 AM	None Detected
0101-012517-DF-003-A	Initial Draw Sample; Lower Right Elkay Drinking Fountain in Girl's Locker Rm G10; Wall-mounted	01/25/17 5:30 AM	None Detected
0101-012517-DF-003-B	Flush Sample; Lower Right Elkay Drinking Fountain in Girl's Locker Rm G10; Wall-mounted	01/25/17 5:31 AM	1.15
0101-012517-DF-004-A	Initial Draw Sample; Lower Right Elkay Drinking Fountain in Gym next to Rm G2; Wall-mounted	01/25/17 5:22 AM	None Detected
0101-012517-DF-004-B	Flush Sample; Lower Right Elkay Drinking Fountain in Gym next to Rm G2; Wall-mounted	01/25/17 5:23 AM	None Detected
0101-012517-DF-005-A	Initial Draw Sample; Upper Left Elkay Drinking Fountain in Gym next to Rm G2; Wall-mounted	01/25/17 5:24 AM	None Detected
0101-012517-DF-005-B	Flush Sample; Upper Left Elkay Drinking Fountain in Gym next to Rm G2; Wall-mounted	01/25/17 5:25 AM	None Detected
0101-012517-DF-008-A	Initial Draw Sample; Lower Right Elkay Drinking Fountain in Gym next to Rm G1; Wall-mounted	01/25/17 5:10 AM	None Detected
0101-012517-DF-008-B	Flush Sample; Lower Right Elkay Drinking Fountain in Gym next to Rm G1; Wall-mounted	01/25/17 5:11 AM	None Detected
0101-012517-DF-009-A	Initial Draw Sample; Upper Left Elkay Drinking Fountain in Gym next to Rm G1; Wall-mounted	01/25/17 5:12 AM	None Detected
0101-012517-DF-009-B	Flush Sample; Upper Left Elkay Drinking Fountain in Gym next to Rm G1; Wall-mounted	01/25/17 5:13 AM	None Detected
0101-012517-DF-010-A	Initial Draw Sample; Lower Right Elkay just outside of Cafeteria on the Right; Wall-mounted	01/25/17 5:33 AM	None Detected
0101-012517-DF-010-B	Flush Sample; Lower Right Elkay just outside of Cafeteria on the Right; Wall-mounted	01/25/17 5:34 AM	None Detected

**Table 1. Summary of Lead in Drinking Water Laboratory Analytical Results**  
**DeKalb Elementary School of the Arts**  
**3131 Old Rockbridge Road, Avondale Estates, GA 30002**



Sample ID*	Sample Location Description	Sample Date & Time	Lead Test Results (ppb)
0101-012517-DF-011-A	Initial Draw Sample; Upper Left Elkay just outside of Cafeteria on the Right; Wall-mounted	01/25/17 5:31 AM	None Detected
0101-012517-DF-011-B	Flush Sample; Upper Left Elkay just outside of Cafeteria on the Right; Wall-mounted	01/25/17 5:32 AM	None Detected
0101-012517-DF-012-A	Initial Draw Sample; Single Elkay Drinking Fountain in Kitchen next to Ice Machine; Wall-mount	01/25/17 5:13 AM	None Detected
0101-012517-DF-012-B	Flush Sample; Single Elkay Drinking Fountain in Kitchen next to Ice Machine; Wall-mounted	01/25/17 5:14 AM	None Detected
0101-012517-DF-013-A	Initial Draw Sample; Upper Left Elkay Drinking Fountain in Cafeteria near Handwashing Station; Wall-mounted	01/25/17 5:24 AM	None Detected
0101-012517-DF-013-B	Flush Sample; Upper Left Elkay Drinking Fountain in Cafeteria near Handwashing Station; Wall-mounted	01/25/17 5:25 AM	None Detected
0101-012517-DF-014-A	Initial Draw Sample; Lower Right Elkay Drinking Fountain in Cafeteria near Handwashing Station; Wall-mounted	01/25/17 5:22 AM	None Detected
0101-012517-DF-014-B	Flush Sample; Lower Right Elkay Drinking Fountain in Cafeteria near Handwashing Station; Wall-mounted	01/25/17 5:23 AM	None Detected
0101-012517-DF-015-A	Initial Draw Sample; Oasis Drinking Fountain in Hallway across from Rm 201J; Wall-mounted	01/25/17 5:41 AM	None Detected
0101-012517-DF-015-B	Flush Sample; Oasis Drinking Fountain in Hallway across from Rm 201J; Wall-mounted	01/25/17 5:42 AM	None Detected
0101-012517-DF-020-A	Initial Draw Sample; Lower Right Elkay Drinking Fountain in Hallway to Left of Asst. Principal's Office Rm 903; Wall-mounted	01/25/17 5:03 AM	None Detected
0101-012517-DF-020-B	Flush Sample; Lower Right Elkay Drinking Fountain in Hallway to Left of Asst. Principal's Office Rm 903; Wall-mounted	01/25/17 5:04 AM	None Detected
0101-012517-DF-021-A	Initial Draw Sample; Upper Left Elkay Drinking Fountain in Hallway to Left of Asst. Principal's Office Rm 903; Wall-mounted	01/25/17 5:05 AM	None Detected
0101-012517-DF-021-B	Flush Sample; Upper Left Elkay Drinking Fountain in Hallway to Left of Asst. Principal's Office Rm 903; Wall-mounted	01/25/17 5:06 AM	None Detected

**Table 1. Summary of Lead in Drinking Water Laboratory Analytical Results**

**DeKalb Elementary School of the Arts**

**3131 Old Rockbridge Road, Avondale Estates, GA 30002**



Sample ID*	Sample Location Description	Sample Date & Time	Lead Test Results (ppb)
0101-012517-DF-022-A	Initial Draw Sample; Lower Right Elkay Drinking Fountain in Hallway around corner from Rm TL 911; Wall-mounted	01/25/17 5:27 AM	None Detected
0101-012517-DF-022-B	Flush Sample; Lower Right Elkay Drinking Fountain in Hallway around corner from Rm TL 911; Wall-mounted	01/25/17 5:28 AM	None Detected
0101-012517-DF-023-A	Initial Draw Sample; Upper Left Elkay Drinking Fountain in Hallway around corner from Rm TL 911; Wall-mounted	01/25/17 5:29 AM	None Detected
0101-012517-DF-023-B	Flush Sample; Upper Left Elkay Drinking Fountain in Hallway around corner from Rm TL 911; Wall-mounted	01/25/17 5:30 AM	None Detected
0101-012517-DF-024-A	Initial Draw Sample; Lower Right Elkay Drinking Fountain in Hallway to the Right of Asst. Principal's Office Rm 913; Wall-mounted	01/25/17 5:33 AM	None Detected
0101-012517-DF-024-B	Flush Sample; Lower Right Elkay Drinking Fountain in Hallway to the Right of Asst. Principal's Office Rm 913; Wall-mounted	01/25/17 5:34 AM	None Detected
0101-012517-DF-025-A	Initial Draw Sample; Upper Left Elkay Drinking Fountain in Hallway to the Right of Asst. Principal's Office Rm 913; Wall-mounted	01/25/17 5:35 AM	None Detected
0101-012517-DF-025-B	Flush Sample; Upper Left Elkay Drinking Fountain in Hallway to the Right of Asst. Principal's Office Rm 913; Wall-mounted	01/25/17 5:36 AM	None Detected
0101-012517-DF-026-A	Initial Draw Sample; Single Elkay Drinking Fountain in Hallway to the Right of Rm 709; Wall-mounted	01/25/17 5:21 AM	None Detected
0101-012517-DF-026-B	Flush Sample; Single Elkay Drinking Fountain in Hallway to the Right of Rm 709; Wall-mounted	01/25/17 5:22 AM	None Detected
0101-012517-DF-027-A	Initial Draw Sample; Single Elkay Drinking Fountain in Hallway next to Rm 809; Wall-mounted	01/25/17 5:39 AM	None Detected
0101-012517-DF-027-B	Flush Sample; Single Elkay Drinking Fountain in Hallway next to Rm 809; Wall-mounted	01/25/17 5:40 AM	None Detected
0101-012517-DF-028-A	Initial Draw Sample; Upper Left Elkay Drinking Fountain in Hallway across from Rm 504; Wall-mounted	01/25/17 5:01 AM	None Detected
0101-012517-DF-028-B	Flush Sample; Upper Left Elkay Drinking Fountain in Hallway across from Rm 504; Wall-mounted	01/25/17 5:02 AM	None Detected

**Table 1. Summary of Lead in Drinking Water Laboratory Analytical Results**

**DeKalb Elementary School of the Arts**

3131 Old Rockbridge Road, Avondale Estates, GA 30002



Sample ID*	Sample Location Description	Sample Date & Time	Lead Test Results ( ppb)
0101-012517-DF-029-A	Initial Draw Sample; Lower Right Elkay Drinking Fountain in Hallway across from Rm 504; Wall-mounted	01/25/17 5:03 AM	None Detected
0101-012517-DF-029-B	Flush Sample; Lower Right Elkay Drinking Fountain in Hallway across from Rm 504; Wall-mounted	01/25/17 5:04 AM	None Detected
0101-012517-TL-001-A	Initial Draw Sample; Sink in Teacher's Lounge Rm 201	01/25/17 5:36 AM	None Detected
0101-012517-TL-001-B	Flush Sample; Sink in Teacher's Lounge Rm 201	01/25/17 5:37 AM	None Detected
0101-012517-TL-002-A	Initial Draw Sample; Sink in Teacher's Lounge Rm 913	01/25/17 5:15 AM	None Detected
0101-012517-TL-002-B	Flush Sample; Sink in Teacher's Lounge Rm 913	01/25/17 5:17 AM	None Detected
0101-012517-RS-001-A	Initial Draw Sample; Upper Right Sink in Girl's RR to Left of Rm 903	01/25/17 5:10 AM	None Detected
0101-012517-RS-001-B	Flush Sample; Upper Right Sink in Girl's RR to Left of Rm 903	01/25/17 5:11 AM	None Detected
0101-012517-RS-002-A	Initial Draw Sample; Lower Right Sink in Girl's RR to the Left of Rm 913	01/25/17 5:38 AM	None Detected
0101-012517-RS-002-B	Flush Sample; Lower Right Sink in Girl's RR to the Left of Rm 913	01/25/17 5:39 AM	1.77
0101-012517-CS-001-A	Initial Draw Sample; Food Prep Sink in Kitchen labeled "Salad Prep" near Office	01/25/17 5:04 AM	2.07
0101-012517-CS-001-B	Flush Sample; Food Prep Sink in Kitchen labeled "Salad Prep" near Office	01/25/17 5:05 AM	None Detected
0101-012517-CS-002-A	Initial Draw Sample; Food Prep Sink in Middle of Kitchen	01/25/17 5:08 AM	None Detected
0101-012517-CS-002-B	Flush Sample; Food Prep Sink in Middle of Kitchen	01/25/17 5:09 AM	None Detected
0101-012517-IM-001-A	Initial Draw Sample; Scotsman Prodigy Ice Machine at the front right of the Kitchen Entrance	01/25/17 5:06 AM	None Detected
0101-012517-SC-001-A	Service Connection Entry into Building	01/25/17 4:58 AM	None Detected

**Notes:**

ppb-parts per billion

**Bold**-Exceeds 15 ppb--EPA's Action Level for Lead

\* Note--Where "A" and "B" are indicated, AEM collected two samples at each source area location: ("A") initial draw sample; and ("B") after a 30-second flush sample



November 30, 2017

**Via E-Mail: Joshua\_I\_williams@dekalbschoolsga.org**

Mr. Joshua L. Williams, MBA, MSM, PMP  
Chief Operations Officer  
DeKalb County School District  
Operations Division  
Sam Moss Service Center  
1780 Montreal Road  
Tucker, Georgia 30084

**Re: Final Technical Report Lead in Drinking Water Sample Results  
DeKalb Elementary School of the Arts (Facility ID #0101)  
3131 Old Rockbridge Rd., Avondale Estates, Georgia 30002  
AEM Project No. 1561-1601**

Dear Mr. Williams:

Atlanta Environmental Management, Inc. (AEM) is pleased to provide the DeKalb County School District (DCSD) an electronic copy of the Final Technical Lead in Drinking Water Sampling Report for DeKalb Elementary School of the Arts (Facility ID #0101).

Initial sampling was conducted on January 25, 2017, and analytical results were received from Analytical Environmental Services, Inc., on February 8, 2017. Additional drinking water samples from select source units were collected on October 18, 2017, and analytical results were received from Analytical Environmental Services, Inc., on October 31, 2017.

## **FINDINGS**

### ***Initial Testing***

AEM collected 60 drinking water samples from 31 sources at DeKalb Elementary School of the Arts (Facility ID #0101), including 2 duplicate samples (see Figure 1). A description of the drinking water outlets sampled and a summary of sample analytical results are provided in the attached table.

Samples were collected in accordance with the Water Sampling Methodology Protocol for DeKalb County School District, dated September 12, 2016. A copy of AEM's Field Sampling Notes is provided in Attachment A.

None of the samples collected and analyzed contained lead at a concentration equal to or above EPA's action level of 15 parts per billion (ppb). A copy of the AES laboratory analytical report is provided in Attachment B.

### ***Initial Sample Results of Previously Identified Source Units Not Sampled***

During the initial sampling event on January 25, 2017, five source units (CS-003 through CS-007) were not initially identified as a drinking water source per the Sampling Protocol. The Sampling Protocol was revised, and out of an abundance of caution it was determined that these source units should be sampled. On October 18, 2017, ten drinking water samples were collected. None of the samples collected contained lead at a concentration at or above EPA's

action level of 15 ppb. A description of the drinking water outlet sampled and a summary of sample analytical results are provided in Table 1.

**Initial Sample Results of Previously Identified Inoperable Source Units**

During the initial sampling event on January 25, 2017, six source units (DF-001, DF-006, DF-007, DF-016, DF-017, and AF-001) were inoperable and could not be sampled. Additionally two source units (DF-018 and DF-019) were originally identified to be sampled; however, during the initial sampling event, the source units had been removed. DCSD made repairs to the inoperable source units and reinstalled source units DF-018 and DF-019 and AEM collected 16 drinking water samples on October 18, 2017. A description of the drinking water outlets sampled and a summary of sample analytical results are provided in Table 1.

The samples collected did not have a result at a concentration at or above EPA's action level of 15 ppb. A copy of the AES laboratory analytical report is provided in Attachment B.

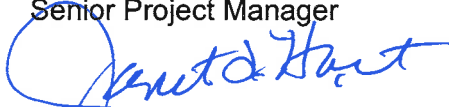
We appreciate your selection of AEM for this project. If you have any questions, please do not hesitate to contact us.

Sincerely,

**Atlanta Environmental Management, Inc.**



Leona Miles, CHMM  
Senior Project Manager



Janet T. Hart  
President

/krf

cc: Daniel Drake (DCSD)  
Tracee Hill (DCSD)

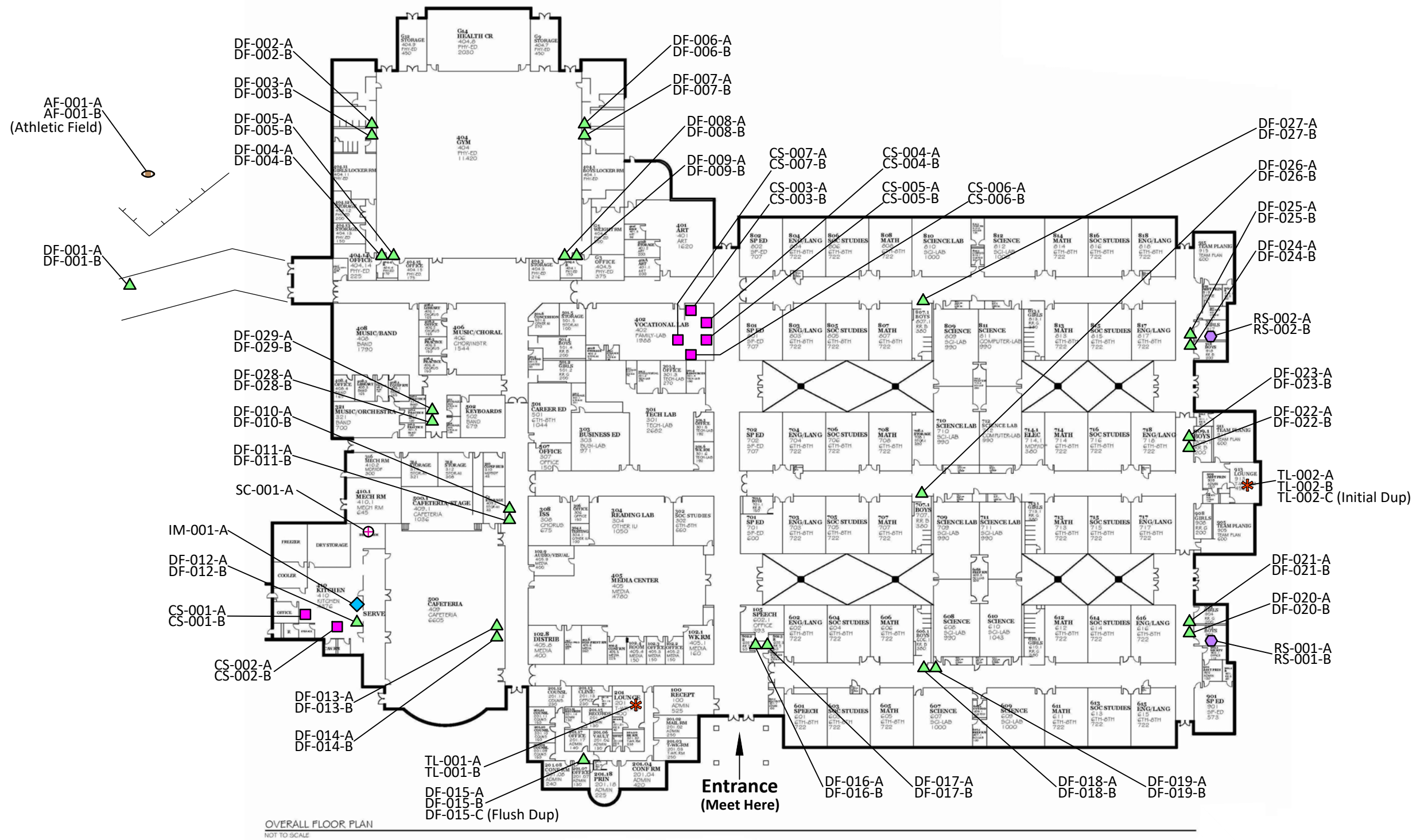
---

# FIGURE



# Legend

- Athletic Field (AF)
- Cafeteria Sink (CS)
- Drinking Fountain (DF)
- Ice Maker (IM)
- Kindergarten Sink (KS)
- Other (OT)
- Restroom Sink (RS)
- Service Connection (SC)
- Teachers Lounge (TL)



 <b>Atlanta Environmental Management, Inc.</b> Environmental Consulting, Engineering, Hydrogeologic Services 2580 Northeast Expressway • Atlanta, Georgia 30345 Phone: 404.329.9006 • Fax: 404.329.2057		Client: DeKalb County School District Site Location: Dekalb Elementary School Of The Arts (#0101) 3131 Old Rockbridge Rd Avondale Estates, GA 30002	
PROJECT #:	1561-1601-0101	DATE:	November 28, 2017
DRAWN BY:	AL	REVISED:	----
CHECKED BY:	TR	SCALE:	NTS
PROJECT MGR:	LM	PRINTED:	11/28/2017 10:36 AM
<b>Sample Location Plan</b>			<b>Figure 1</b>

G:\DWG\1561-1601 DeKalb County Schools\0101\0101

---

# TABLE

**Table 1. Summary of Lead in Drinking Water Laboratory Analytical Results**

**DeKalb Elementary School of the Arts**

**3131 Old Rockbridge Road, Avondale Estates, GA 30002**



Sample ID*	Sample Location Description	Sample Date & Time	Lead Test Results (ppb)
0101-012517-DF-001-A	Not Sampled; Located on Athletic Field; No Water at Athletic Field	NS	NS
0101-012517-DF-001-B	Not Sampled; Located on Athletic Field; No Water at Athletic Field	NS	NS
0101-101817-DF-001-A	Initial Draw Sample; Single Haws Drinking Fountain next to the Playground	10/18/17 6:05 AM	None Detected
0101-101817-DF-001-B	Flush Sample; Single Haws Drinking Fountain next to the Playground	10/18/17 6:06 AM	None Detected
0101-012517-DF-002-A	Initial Draw Sample; Upper Left Elkay Drinking Fountain in Girl's Locker Rm G10; Wall-mounted	01/25/17 5:28 AM	None Detected
0101-012517-DF-002-B	Flush Sample; Upper Left Elkay Drinking Fountain in Girl's Locker Rm G10; Wall-mounted	01/25/17 5:29 AM	None Detected
0101-012517-DF-003-A	Initial Draw Sample; Lower Right Elkay Drinking Fountain in Girl's Locker Rm G10; Wall-mounted	01/25/17 5:30 AM	None Detected
0101-012517-DF-003-B	Flush Sample; Lower Right Elkay Drinking Fountain in Girl's Locker Rm G10; Wall-mounted	01/25/17 5:31 AM	1.15
0101-012517-DF-004-A	Initial Draw Sample; Lower Right Elkay Drinking Fountain in Gym next to Rm G2; Wall-mounted	01/25/17 5:22 AM	None Detected
0101-012517-DF-004-B	Flush Sample; Lower Right Elkay Drinking Fountain in Gym next to Rm G2; Wall-mounted	01/25/17 5:23 AM	None Detected
0101-012517-DF-005-A	Initial Draw Sample; Upper Left Elkay Drinking Fountain in Gym next to Rm G2; Wall-mounted	01/25/17 5:24 AM	None Detected
0101-012517-DF-005-B	Flush Sample; Upper Left Elkay Drinking Fountain in Gym next to Rm G2; Wall-mounted	01/25/17 5:25 AM	None Detected
0101-012517-DF-006-A	Not Sampled; Right Elkay Drinking Fountain in Boy's Locker Rm G7; Inoperable	NS	NS
0101-012517-DF-006-B	Not Sampled; Right Elkay Drinking Fountain in Boy's Locker Rm G7; Inoperable	NS	NS
0101-101817-DF-006-A	Initial Draw sample; Lower Right Elkay Drinking Fountain in Boy's Locker Rm G7	10/18/17 5:56 AM	4.07
0101-101817-DF-006-B	Flush sample; Lower Right Elkay Drinking Fountain in Boy's Locker Rm G7	10/18/17 5:57 AM	2.02
0101-012517-DF-007-A	Not Sampled; Left Elkay Drinking Fountain in Boy's Locker Rm G7; Inoperable	NS	NS
0101-012517-DF-007-B	Not Sampled; Left Elkay Drinking Fountain in Boy's Locker Rm G7; Inoperable	NS	NS
0101-101817-DF-007-A	Initial Draw sample; Upper Left Elkay Drinking Fountain in Boy's Locker Rm G7	10/18/17 5:59 AM	2.05

**Table 1. Summary of Lead in Drinking Water Laboratory Analytical Results**

**DeKalb Elementary School of the Arts**

3131 Old Rockbridge Road, Avondale Estates, GA 30002



Sample ID*	Sample Location Description	Sample Date & Time	Lead Test Results (ppb)
0101-101817-DF-007-B	Flush sample; Upper Left Elkay Drinking Fountain in Boy's Locker Rm G7	10/18/17 6:00 AM	1.16
0101-012517-DF-008-A	Initial Draw Sample; Lower Right Elkay Drinking Fountain in Gym next to Rm G1; Wall-mounted	01/25/17 5:10 AM	None Detected
0101-012517-DF-008-B	Flush Sample; Lower Right Elkay Drinking Fountain in Gym next to Rm G1; Wall-mounted	01/25/17 5:11 AM	None Detected
0101-012517-DF-009-A	Initial Draw Sample; Upper Left Elkay Drinking Fountain in Gym next to Rm G1; Wall-mounted	01/25/17 5:12 AM	None Detected
0101-012517-DF-009-B	Flush Sample; Upper Left Elkay Drinking Fountain in Gym next to Rm G1; Wall-mounted	01/25/17 5:13 AM	None Detected
0101-012517-DF-010-A	Initial Draw Sample; Lower Right Elkay just outside of Cafeteria on the Right; Wall-mounted	01/25/17 5:33 AM	None Detected
0101-012517-DF-010-B	Flush Sample; Lower Right Elkay just outside of Cafeteria on the Right; Wall-mounted	01/25/17 5:34 AM	None Detected
0101-012517-DF-011-A	Initial Draw Sample; Upper Left Elkay just outside of Cafeteria on the Right; Wall-mounted	01/25/17 5:31 AM	None Detected
0101-012517-DF-011-B	Flush Sample; Upper Left Elkay just outside of Cafeteria on the Right; Wall-mounted	01/25/17 5:32 AM	None Detected
0101-012517-DF-012-A	Initial Draw Sample; Single Elkay Drinking Fountain in Kitchen next to Ice Machine; Wall-mount	01/25/17 5:13 AM	None Detected
0101-012517-DF-012-B	Flush Sample; Single Elkay Drinking Fountain in Kitchen next to Ice Machine; Wall-mounted	01/25/17 5:14 AM	None Detected
0101-012517-DF-013-A	Initial Draw Sample; Upper Left Elkay Drinking Fountain in Cafeteria near Handwashing Station; Wall-mounted	01/25/17 5:24 AM	None Detected
0101-012517-DF-013-B	Flush Sample; Upper Left Elkay Drinking Fountain in Cafeteria near Handwashing Station; Wall-mounted	01/25/17 5:25 AM	None Detected
0101-012517-DF-014-A	Initial Draw Sample; Lower Right Elkay Drinking Fountain in Cafeteria near Handwashing Station; Wall-mounted	01/25/17 5:22 AM	None Detected
0101-012517-DF-014-B	Flush Sample; Lower Right Elkay Drinking Fountain in Cafeteria near Handwashing Station; Wall-mounted	01/25/17 5:23 AM	None Detected

**Table 1. Summary of Lead in Drinking Water Laboratory Analytical Results**

**DeKalb Elementary School of the Arts**

3131 Old Rockbridge Road, Avondale Estates, GA 30002



Sample ID*	Sample Location Description	Sample Date & Time	Lead Test Results (ppb)
0101-012517-DF-015-A	Initial Draw Sample; Oasis Drinking Fountain in Hallway across from Rm 201J; Wall-mounted	01/25/17 5:41 AM	None Detected
0101-012517-DF-015-B	Flush Sample; Oasis Drinking Fountain in Hallway across from Rm 201J; Wall-mounted	01/25/17 5:42 AM	None Detected
0101-012517-DF-015-C	Flush Sample Duplicate; Oasis Drinking Fountain in Hallway across from Rm 201J; Wall-mounted	01/25/17 5:43 AM	None Detected
0101-012517-DF-016-A	Not Sampled; Upper Left Elkay Drinking Fountain in Hallway next to Storage Rm 103 at Main Entrance; Inoperable	NS	NS
0101-012517-DF-016-B	Not Sampled; Upper Left Elkay Drinking Fountain in Hallway next to Storage Rm 103 at Main Entrance; Inoperable	NS	NS
0101-101817-DF-016-A	Initial Draw sample; Upper Left Elkay Drinking Fountain in Hallway next to Storage Rm 103 at Main Entrance	10/18/17 6:27 AM	None Detected
0101-101817-DF-016-B	Flush sample; Upper Left Elkay Drinking Fountain in Hallway next to Storage Rm 103 at Main Entrance	10/18/17 6:28 AM	None Detected
0101-012517-DF-017-A	Not Sampled; Lower Right Elkay Drinking Fountain in Hallway next to Storage Rm 103 at Main Entrance; Inoperable	NS	NS
0101-012517-DF-017-B	Not Sampled; Lower Right Elkay Drinking Fountain in Hallway next to Storage Rm 103 at Main Entrance; Inoperable	NS	NS
0101-101817-DF-017-A	Initial Draw sample; Lower Right Elkay Drinking Fountain in Hallway next to Storage Rm 103 at Main Entrance	10/18/17 6:30 AM	None Detected
0101-101817-DF-017-B	Flush sample; Lower Right Elkay Drinking Fountain in Hallway next to Storage Rm 103 at Main Entrance	10/18/17 6:31 AM	None Detected
0101-012517-DF-018-A	Not Sampled; Does not Exist; Removed from Wall across from Science Rm 607	--	--
0101-012517-DF-018-B	Not Sampled; Does not Exist; Removed from Wall across from Science Rm 607	--	--
0101-101817-DF-018-A	Initial Draw sample; Upper Left Elkay Drinking Fountain to the Left of Rm 608	10/18/17 6:21 AM	None Detected
0101-101817-DF-018-B	Flush sample; Upper Left Elkay Drinking Fountain to the Left of Rm 608	10/18/17 6:22 AM	None Detected
0101-012517-DF-019-A	Not Sampled; Does not Exist; Removed from Wall across from Science Rm 607	--	--
0101-012517-DF-019-B	Not Sampled; Does not Exist; Removed from Wall across from Science Rm 607	--	--
0101-101817-DF-019-A	Initial Draw sample; Lower Right Elkay Drinking Fountain to the Left of Rm 608	10/18/17 6:23 AM	None Detected

**Table 1. Summary of Lead in Drinking Water Laboratory Analytical Results**

**DeKalb Elementary School of the Arts**

**3131 Old Rockbridge Road, Avondale Estates, GA 30002**



Sample ID*	Sample Location Description	Sample Date & Time	Lead Test Results (ppb)
0101-101817-DF-019-B	Flush sample; Lower Right Elkay Drinking Fountain to the Left of Rm 608	10/18/17 6:24 AM	None Detected
0101-012517-DF-020-A	Initial Draw Sample; Lower Right Elkay Drinking Fountain in Hallway to Left of Asst. Principal's Office Rm 903; Wall-mounted	01/25/17 5:03 AM	None Detected
0101-012517-DF-020-B	Flush Sample; Lower Right Elkay Drinking Fountain in Hallway to Left of Asst. Principal's Office Rm 903; Wall-mounted	01/25/17 5:04 AM	None Detected
0101-012517-DF-021-A	Initial Draw Sample; Upper Left Elkay Drinking Fountain in Hallway to Left of Asst. Principal's Office Rm 903; Wall-mounted	01/25/17 5:05 AM	None Detected
0101-012517-DF-021-B	Flush Sample; Upper Left Elkay Drinking Fountain in Hallway to Left of Asst. Principal's Office Rm 903; Wall-mounted	01/25/17 5:06 AM	None Detected
0101-012517-DF-022-A	Initial Draw Sample; Lower Right Elkay Drinking Fountain in Hallway around corner from Rm TL 911; Wall-mounted	01/25/17 5:27 AM	None Detected
0101-012517-DF-022-B	Flush Sample; Lower Right Elkay Drinking Fountain in Hallway around corner from Rm TL 911; Wall-mounted	01/25/17 5:28 AM	None Detected
0101-012517-DF-023-A	Initial Draw Sample; Upper Left Elkay Drinking Fountain in Hallway around corner from Rm TL 911; Wall-mounted	01/25/17 5:29 AM	None Detected
0101-012517-DF-023-B	Flush Sample; Upper Left Elkay Drinking Fountain in Hallway around corner from Rm TL 911; Wall-mounted	01/25/17 5:30 AM	None Detected
0101-012517-DF-024-A	Initial Draw Sample; Lower Right Elkay Drinking Fountain in Hallway to the Right of Asst. Principal's Office Rm 913; Wall-mounted	01/25/17 5:33 AM	None Detected
0101-012517-DF-024-B	Flush Sample; Lower Right Elkay Drinking Fountain in Hallway to the Right of Asst. Principal's Office Rm 913; Wall-mounted	01/25/17 5:34 AM	None Detected
0101-012517-DF-025-A	Initial Draw Sample; Upper Left Elkay Drinking Fountain in Hallway to the Right of Asst. Principal's Office Rm 913; Wall-mounted	01/25/17 5:35 AM	None Detected
0101-012517-DF-025-B	Flush Sample; Upper Left Elkay Drinking Fountain in Hallway to the Right of Asst. Principal's Office Rm 913; Wall-mounted	01/25/17 5:36 AM	None Detected
0101-012517-DF-026-A	Initial Draw Sample; Single Elkay Drinking Fountain in Hallway to the Right of Rm 709; Wall-mounted	01/25/17 5:21 AM	None Detected
0101-012517-DF-026-B	Flush Sample; Single Elkay Drinking Fountain in Hallway to the Right of Rm 709; Wall-mounted	01/25/17 5:22 AM	None Detected



**Table 1. Summary of Lead in Drinking Water Laboratory Analytical Results**

**DeKalb Elementary School of the Arts**

**3131 Old Rockbridge Road, Avondale Estates, GA 30002**



Sample ID*	Sample Location Description	Sample Date & Time	Lead Test Results (ppb)
0101-012517-DF-027-A	Initial Draw Sample; Single Elkay Drinking Fountain in Hallway next to Rm 809; Wall-mounted	01/25/17 5:39 AM	None Detected
0101-012517-DF-027-B	Flush Sample; Single Elkay Drinking Fountain in Hallway next to Rm 809; Wall-mounted	01/25/17 5:40 AM	None Detected
0101-012517-DF-028-A	Initial Draw Sample; Upper Left Elkay Drinking Fountain in Hallway across from Rm 504; Wall-mounted	01/25/17 5:01 AM	None Detected
0101-012517-DF-028-B	Flush Sample; Upper Left Elkay Drinking Fountain in Hallway across from Rm 504; Wall-mounted	01/25/17 5:02 AM	None Detected
0101-012517-DF-029-A	Initial Draw Sample; Lower Right Elkay Drinking Fountain in Hallway across from Rm 504; Wall-mounted	01/25/17 5:03 AM	None Detected
0101-012517-DF-029-B	Flush Sample; Lower Right Elkay Drinking Fountain in Hallway across from Rm 504; Wall-mounted	01/25/17 5:04 AM	None Detected
0101-012517-TL-001-A	Initial Draw Sample; Sink in Teacher's Lounge Rm 201	01/25/17 5:36 AM	None Detected
0101-012517-TL-001-B	Flush Sample; Sink in Teacher's Lounge Rm 201	01/25/17 5:37 AM	None Detected
0101-012517-TL-002-A	Initial Draw Sample; Sink in Teacher's Lounge Rm 913	01/25/17 5:15 AM	None Detected
0101-012517-TL-002-B	Flush Sample; Sink in Teacher's Lounge Rm 913	01/25/17 5:17 AM	None Detected
0101-012517-TL-002-C	Initial Draw Sample Duplicate; Sink in Teacher's Lounge Rm 913	01/25/17 5:16 AM	None Detected
0101-012517-RS-001-A	Initial Draw Sample; Upper Right Sink in Girl's RR to Left of Rm 903	01/25/17 5:10 AM	None Detected
0101-012517-RS-001-B	Flush Sample; Upper Right Sink in Girl's RR to Left of Rm 903	01/25/17 5:11 AM	None Detected
0101-012517-RS-002-A	Initial Draw Sample; Lower Right Sink in Girl's RR to the Left of Rm 913	01/25/17 5:38 AM	None Detected
0101-012517-RS-002-B	Flush Sample; Lower Right Sink in Girl's RR to the Left of Rm 913	01/25/17 5:39 AM	1.77
0101-012517-CS-001-A	Initial Draw Sample; Food Prep Sink in Kitchen labeled "Salad Prep" near Office	01/25/17 5:04 AM	2.07
0101-012517-CS-001-B	Flush Sample; Food Prep Sink in Kitchen labeled "Salad Prep" near Office	01/25/17 5:05 AM	None Detected
0101-012517-CS-002-A	Initial Draw Sample; Food Prep Sink in Middle of Kitchen	01/25/17 5:08 AM	None Detected
0101-012517-CS-002-B	Flush Sample; Food Prep Sink in Middle of Kitchen	01/25/17 5:09 AM	None Detected
0101-101817-CS-003-A	Initial Draw Sample; Double sink to the left of the entrance; Rm 409	10/18/17 5:42 AM	1.06
0101-101817-CS-003-B	Flush Sample; Double sink to the left of the entrance; Rm 409	10/18/17 5:43 AM	None Detected
0101-101817-CS-004-A	Initial Draw Sample; Double sink to the left of the refrigerator; Rm 409	10/18/17 5:44 AM	None Detected
0101-101817-CS-004-B	Flush Sample; Double sink to the left of the refrigerator; Rm 409	10/18/17 5:45 AM	None Detected

**Table 1. Summary of Lead in Drinking Water Laboratory Analytical Results**  
**DeKalb Elementary School of the Arts**  
**3131 Old Rockbridge Road, Avondale Estates, GA 30002**



Sample ID*	Sample Location Description	Sample Date & Time	Lead Test Results (ppb)
0101-101817-CS-005-A	Initial Draw Sample; Double sink to the right of the refrigerator; Rm 409	10/18/17 5:46 AM	1.31
0101-101817-CS-005-B	Flush Sample; Double sink to the right of the refrigerator; Rm 409	10/18/17 5:47 AM	None Detected
0101-101817-CS-006-A	Initial Draw Sample; Double sink to the left of the washer/dryer; Rm 409	10/18/17 5:49 AM	None Detected
0101-101817-CS-006-B	Flush Sample; Double sink to the left of the washer/dryer; Rm 409	10/18/17 5:50 AM	None Detected
0101-101817-CS-007-A	Initial Draw Sample; Single sink on the island; Rm 409	10/18/17 5:51 AM	None Detected
0101-101817-CS-007-B	Flush Sample; Single sink on the island; Rm 409	10/18/17 5:52 AM	None Detected
0101-012517-AF-001-A	Not Sampled; No Water at Athletic Field	NS	NS
0101-012517-AF-001-B	Not Sampled; No Water at Athletic Field	NS	NS
0101-101817-AF-001-A	Initial Draw sample; Single Haws Drinking Fountain next to the Tennis Court	10/18/17 6:11 AM	1.94
0101-101817-AF-001-B	Flush sample; Single Haws Drinking Fountain next to the Tennis Court	10/18/17 6:12 AM	None Detected
0101-012517-IM-001-A	Initial Draw Sample; Scotsman Prodigy Ice Machine at the front right of the Kitchen Entrance	01/25/17 5:06 AM	None Detected
0101-012517-SC-001-A	Service Connection Entry into Building	01/25/17 4:58 AM	None Detected

**Notes:**

ppb-parts per billion

**Bold**-Exceeds 15 ppb--EPA's Action Level for Lead

\* Note--Where "A" and "B" are indicated, AEM collected two samples at each source area location: ("A") initial draw sample; and ("B") after a 30-second flush sample

NS--Source unit was inoperable or not selected for sampling during the initial during the initial testing on 1/25/17



---

**ATTACHMENT A**  
**AEM Field Sampling Forms**

**DEKALB COUNTY SCHOOL DISTRICT  
LEAD IN DRINKING WATER FIELD DATA SHEET**

FACILITY NAME: DEKALB ELEMENTARY SCHOOL OF THE ARTS  
 ADDRESS: 3131 Old Rockbridge Rd. Avondale Estates, GA, 30002

FACILITY ID: 0101

DATE	TIME	SAMPLE ID (Facility ID-Date-Location Type-Sequential #-Sample Type)	NEAREST ROOM	LOCATION (circle)	DESCRIPTION	SAMPLER INIT.
1/25/17	0458	0101 - 012517 - SC-001-A	Kitchen (Dish wash Area)	In room Hallway	No outlet in Mechanical Room. Closest outlet in Dish Wash Area of Kitchen	CA
1/25/17		0101 - 012517 -		In room Hallway	Sample taken from sink at entrance to dish area	
1/25/17	0504	0101 - 012517 - CS-001-A	Kitchen 410	In room Hallway	Food prep sink at back of the kitchen near office Designated "Salad Prep"	
1/25/17	0505	0101 - 012517 - CS-001-B	"	In room Hallway		
1/25/17	0506	0101 - 012517 - IM-001-A	"	In room Hallway	Seatsman "Prodigy" ice machine at front right of kitchen entrance	
1/25/17	0508	0101 - 012517 - CS-002-A	"	In room Hallway	Food prep sink in center of the kitchen	
1/25/17	0509	0101 - 012517 - CS-002-B	"	In room Hallway	"	
1/25/17	0513	0101 - 012517 - DF-012-A	"	In room Hallway	WM Elkay to the right of ice machine	
1/25/17	0514	0101 - 012517 - DF-012-B	"	In room Hallway		
1/25/17		0101 - 012517 -		In room Hallway		

LOCATION TYPE: AF = athletic field; CS = cafeteria sink; DF = drinking fountain; IM = ice maker; KS = kindergarten sink; RS = restroom sink; SC = service connection; TL = teachers' lounge. SAMPLE TYPE: A = initial draw; B = flush; C = duplicate

**DEKALB COUNTY SCHOOL DISTRICT  
LEAD IN DRINKING WATER FIELD DATA SHEET**

FACILITY NAME: DEKALB ELEMENTARY SCHOOL OF THE ARTS  
 ADDRESS: 3131 Old Rockbridge Rd. Avondale Estates, GA, 30002

FACILITY ID: 0101

DATE	TIME	SAMPLE ID (Facility ID-Date-Location Type-Sequential #-Sample Type)	NEAREST ROOM	LOCATION (circle)	DESCRIPTION	SAMPLER INIT.
1/25/17	0522	0101 - 012517 - DF-014-A	Cafeteria 500	<u>In room</u> Hallway	lower right Elkay at front of cafeteria near handwashing station	CJ ↓
1/25/17	0523	0101 - 012517 - DF-014-B	"	<u>In room</u> Hallway	"	
1/25/17	0524	0101 - 012517 - DF-013-A	"	<u>In room</u> Hallway	upper left Elkay	
1/25/17	0525	0101 - 012517 - DF-013-B	"	<u>In room</u> Hallway		
1/25/17	0531	0101 - 012517 - DF-011-A	Just outside Cafeteria on right	<u>In room</u> <u>Hallway</u>	Upper left Elkay w/ M	
1/25/17	0532	0101 - 012517 - DF-011-B	"	<u>In room</u> <u>Hallway</u>		
1/25/17	0533	0101 - 012517 - DF-010-A	"	<u>In room</u> <u>Hallway</u>	Lower right w/ M Elkay	
1/25/17	0534	0101 - 012517 - DF-010-B	"	<u>In room</u> <u>Hallway</u>		
1/25/17	0536	0101 - 012517 - TL-001-A	Teacher's Lounge 201	<u>In room</u> <u>Hallway</u>	sample from sink in Teacher's lounge	
1/25/17	0537	0101 - 012517 - TL-001-B	"	<u>In room</u> <u>Hallway</u>		

LOCATION TYPE: AF = athletic field; CS = cafeteria sink; DF = drinking fountain; IM = ice maker; KS = kindergarten sink; RS = restroom sink; SC = service connection; TL = teachers' lounge. SAMPLE TYPE: A = initial draw; B = flush; C = duplicate

**DEKALB COUNTY SCHOOL DISTRICT  
LEAD IN DRINKING WATER FIELD DATA SHEET**

FACILITY NAME: DEKALB ELEMENTARY SCHOOL OF THE ARTS  
 ADDRESS: 3131 Old Rockbridge Rd. Avondale Estates, GA, 30002

FACILITY ID: 0101

DATE	TIME	SAMPLE ID (Facility ID-Date-Location Type-Sequential #-Sample Type)	NEAREST ROOM	LOCATION (circle)	DESCRIPTION	SAMPLER INIT.
1/25/17	0541	0101 - 012517 - DF-015-A	Across from 201J	In room Hallway	WM Oasis	
1/25/17	0542	0101 - 012517 - DF-015-B	"	In room Hallway		
1/25/17	0543	0101 - 012517 - DF-015-C	"	In room Hallway	Flush dup	
1/25/17		0101 - 012517 - DF-016-A	next to Storage 103 at main Entrance	In room Hallway	Upper left Elkay not in service	
1/25/17		0101 - 012517 - DF-016-B	"	In room Hallway	not sampled	
1/25/17		0101 - 012517 - DF-017-A	"	In room Hallway	lower right Elkay not in service	
1/25/17		0101 - 012517 - DF-017-B	"	In room Hallway	not sampled	
1/25/17		0101 - 012517 -		In room Hallway		
1/25/17		0101 - 012517 -		In room Hallway		
1/25/17		0101 - 012517 -		In room Hallway		

LOCATION TYPE: AF = athletic field; CS = cafeteria sink; DF = drinking fountain; IM = ice maker; KS = kindergarten sink; RS = restroom sink; SC = service connection; TL = teachers' lounge. SAMPLE TYPE: A = initial draw; B = flush; C = duplicate

**DEKALB COUNTY SCHOOL DISTRICT  
LEAD IN DRINKING WATER FIELD DATA SHEET**

FACILITY NAME: DEKALB ELEMENTARY SCHOOL OF THE ARTS  
 ADDRESS: 3131 Old Rockbridge Rd. Avondale Estates, GA, 30002

FACILITY ID: 0101

DATE	TIME	SAMPLE ID (Facility ID-Date-Location Type-Sequential #-Sample Type)	NEAREST ROOM	LOCATION (circle)	DESCRIPTION	SAMPLER INIT.
1/25/17	0501	0101 - 012517 - DF-028-A	across from Rm 504	In room Hallway	upper left Elkey DF Wm.	UH
1/25/17	0502	0101 - 012517 - DF-028-B	↓	In room Hallway	" "	UH
1/25/17	0503	0101 - 012517 - DF-029-A	↓	In room Hallway	lower Right Elkey DF Wm.	UH
1/25/17	0504	0101 - 012517 - DF-029-B	↓	In room Hallway	" "	UH
1/25/17	0510	0101 - 012517 - DF-008-A	In gym next to Rm 671	In room Hallway	lower Right Elkey Wm	UH
1/25/17	0511	0101 - 012517 - DF-008-B	↓	In room Hallway	" "	UH
1/25/17	0512	0101 - 012517 - DF-009-A	↓	In room Hallway	upper left Elkey Wm	UH
1/25/17	0513	0101 - 012517 - DF-009-B	↓	In room Hallway	" "	UH
1/25/17	—	0101 - 012517 - DF-006-A	Rm 67 Boy lockers	In room Hallway	Right Elkey Wm inoperable	UH
1/25/17	—	0101 - 012517 - DF-006-B	" "	In room Hallway	" "	UH

LOCATION TYPE: AF = athletic field; CS = cafeteria sink; DF = drinking fountain; IM = ice maker; KS = kindergarten sink; RS = restroom sink; SC = service connection; TL = teachers' lounge. SAMPLE TYPE: A = initial draw; B = flush; C = duplicate

**DEKALB COUNTY SCHOOL DISTRICT  
LEAD IN DRINKING WATER FIELD DATA SHEET**

FACILITY NAME: DEKALB ELEMENTARY SCHOOL OF THE ARTS  
 ADDRESS: 3131 Old Rockbridge Rd. Avondale Estates, GA, 30002

FACILITY ID: 0101

DATE	TIME	SAMPLE ID (Facility ID-Date-Location Type-Sequential #-Sample Type)	NEAREST ROOM	LOCATION (circle)	DESCRIPTION	SAMPLER INIT.
1/25/17	- - -	0101 - 012517 - DF-007-A	Gr7 boy locker Rm	In room Hallway	Left Elkay Wm. Inoperable	UH
1/25/17	- - -	0101 - 012517 - DF-007-B	" "	In room Hallway	" "	UH
1/25/17	0522	0101 - 012517 - DF-004-A	next to Rm Gr2	In room Hallway	lower Right Elkay Wm	UH
1/25/17	0523	0101 - 012517 - DF-004-B	in gym	In room Hallway	" "	UH
1/25/17	0524	0101 - 012517 - DF-005-A		In room Hallway	upper left Elkay Wm	UH
1/25/17	0525	0101 - 012517 - DF-005-B	↓	In room Hallway	" "	UH
1/25/17	0528	0101 - 012517 - DF-002-A	Rm <del>Gr2</del> 810 girls locker	In room Hallway	upper left Elkay Wm	UH
1/25/17	0529	0101 - 012517 - DF-002-B		In room Hallway	" "	UH
1/25/17	0530	0101 - 012517 - DF-003-A		In room Hallway	lower Right Elkay Wm	UH
1/25/17	0531	0101 - 012517 - DF-003-B	↓	In room Hallway	" "	UH

LOCATION TYPE: AF = athletic field; CS = cafeteria sink; DF = drinking fountain; IM = ice maker; KS = kindergarten sink; RS = restroom sink; SC = service connection; TL = teachers' lounge. SAMPLE TYPE: A = initial draw; B = flush; C = duplicate

**DEKALB COUNTY SCHOOL DISTRICT  
LEAD IN DRINKING WATER FIELD DATA SHEET**

FACILITY NAME: DEKALB ELEMENTARY SCHOOL OF THE ARTS  
 ADDRESS: 3131 Old Rockbridge Rd. Avondale Estates, GA, 30002

FACILITY ID: 0101

DATE	TIME	SAMPLE ID (Facility ID-Date-Location Type-Sequential #-Sample Type)	NEAREST ROOM	LOCATION (circle)	DESCRIPTION	SAMPLER INIT.
1/25/17	0539	0101 - 012517 - DF-027-A	Next to Rm 809	In room Hallway	single Elkay um	UH
1/25/17	0540	0101 - 012517 - DF-027-B	" "	In room Hallway	" "	UH
1/25/17	/	0101 - 012517 - DF-001-A	Athletic field	In room Hallway	Water is turned off to Athletic field	UH
1/25/17	/	0101 - 012517 - DF-001-B	↓	In room Hallway	" "	UH
1/25/17	/	0101 - 012517 - AF-001-A	↓	In room Hallway	" "	UH
1/25/17	/	0101 - 012517 - AF-001-B	↓	In room Hallway	" "	UH
1/25/17		0101 - 012517 -		In room Hallway		
1/25/17		0101 - 012517 -		In room Hallway		
1/25/17		0101 - 012517 -		In room Hallway		
1/25/17		0101 - 012517 -		In room Hallway		

LOCATION TYPE: AF = athletic field; CS = cafeteria sink; DF = drinking fountain; IM = ice maker; KS = kindergarten sink; RS = restroom sink; SC = service connection; TL = teachers' lounge. SAMPLE TYPE: A = initial draw; B = flush; C = duplicate

**DEKALB COUNTY SCHOOL DISTRICT  
LEAD IN DRINKING WATER FIELD DATA SHEET**

FACILITY NAME: DEKALB ELEMENTARY SCHOOL OF THE ARTS  
 ADDRESS: 3131 Old Rockbridge Rd. Avondale Estates, GA, 30002

FACILITY ID: 0101

DATE	TIME	SAMPLE ID (Facility ID-Date-Location Type-Sequential #-Sample Type)	NEAREST ROOM	LOCATION (circle)	DESCRIPTION	SAMPLER INIT.
1/25/17	0515	0101 - 012517 - TL-002-A	Teachers lounge/913	In room Hallway	Only sink in room	KTW
1/25/17	0517	0101 - 012517 - TL-002-B	↓	In room Hallway	SAA	KTW
1/25/17	0516	0101 - 012517 - TL-002-C		In room Hallway	SAA Initial dup.	KTW
1/25/17	0521	0101 - 012517 - DF-026-A		to right of Rm 709	In room Hallway	Single Elkay DF - WM
1/25/17	0522	0101 - 012517 - DF-026-B	" "	In room Hallway	SAA	KTW
1/25/17	0527	0101 - 012517 - DF-022-A	around corner from TL 911	In room Hallway	Lower Right Elkay DF - WM	KTW
1/25/17	0528	0101 - 012517 - DF-022-B	↓	In room Hallway	SAA	KTW
1/25/17	0529	0101 - 012517 - DF-023-A		In room Hallway	Upper Left Elkay DF - WM	KTW
1/25/17	0530	0101 - 012517 - DF-023-B		In room Hallway	SAA	KTW
1/25/17		0101 - 012517 -		In room Hallway		

LOCATION TYPE: AF = athletic field; CS = cafeteria sink; DF = drinking fountain; IM = ice maker; KS = kindergarten sink; RS = restroom sink; SC = service connection; TL = teachers' lounge. SAMPLE TYPE: A = initial draw; B = flush; C = duplicate



**DEKALB COUNTY SCHOOL DISTRICT  
LEAD IN DRINKING WATER FIELD DATA SHEET**

FACILITY NAME: DEKALB ELEMENTARY SCHOOL OF THE ARTS  
 ADDRESS: 3131 Old Rockbridge Rd. Avondale Estates, GA, 30002

FACILITY ID: 0101

DATE	TIME	SAMPLE ID (Facility ID-Date-Location Type-Sequential #-Sample Type)	NEAREST ROOM	LOCATION (circle)	DESCRIPTION	SAMPLER INIT.
1/25/17	NS	0101 - 012517 - DF-018-A	across hall from science Rm 607	In room <del>Hallway</del>	Both DF's not sampled; do not exist; both have	KTW
1/25/17	NS	0101 - 012517 - DF-018-B		In room <del>Hallway</del>	been removed from the wall	KTW
1/25/17	NS	0101 - 012517 - DF-019-A		In room <del>Hallway</del>		KTW
1/25/17	NS	0101 - 012517 - DF-019-B		In room <del>Hallway</del>		KTW
1/25/17	0503	0101 - 012517 - DF-020-A	to left of asst. princ. office 903	In room <del>Hallway</del>	Lower right Elkay DF - nm	KTW
1/25/17	0504	0101 - 012517 - DF-020-B		In room <del>Hallway</del>	SAA	KTW
1/25/17	0505	0101 - 012517 - DF-021-A		In room <del>Hallway</del>	Upper Left Elkay DF - nm	KTW
1/25/17	0506	0101 - 012517 - DF-021-B		In room <del>Hallway</del>	SAA	KTW
1/25/17	0510	0101 - 012517 - RS-001-A	girls RR to left of Rm 903	In room <del>Hallway</del>	Upper Right sink	KTW
1/25/17	0511	0101 - 012517 - RS-001-B	" "	In room <del>Hallway</del>	SAA	KTW

LOCATION TYPE: AF = athletic field; CS = cafeteria sink; DF = drinking fountain; IM = ice maker; KS = kindergarten sink; RS = restroom sink; SC = service connection; TL = teachers' lounge. SAMPLE TYPE: A = initial draw; B = flush; C = duplicate

**DEKALB COUNTY SCHOOL DISTRICT  
LEAD IN DRINKING WATER FIELD DATA SHEET**

FACILITY NAME: DEKALB ELEMENTARY SCHOOL OF THE ARTS  
 ADDRESS: 3131 Old Rockbridge Rd. Avondale Estates, GA, 30002

FACILITY ID: 0101

DATE	TIME	SAMPLE ID (Facility ID-Date-Location Type-Sequential #-Sample Type)	NEAREST ROOM	LOCATION (circle)	DESCRIPTION	SAMPLER INIT.
1/25/17	0533	0101 - 012517 - DF-024-A	to right of asst. princ. Rm 913	In room <u>Hallway</u>	Lower right FKay DF - wmm	KTW
1/25/17	0534	0101 - 012517 - DF-024-B	↓	In room <u>Hallway</u>	SAA	KTW
1/25/17	0535	0101 - 012517 - DF-025-A		In room <u>Hallway</u>	Upper left EKay DF - wmm	KTW
1/25/17	0536	0101 - 012517 - DF-025-B		In room <u>Hallway</u>	SAA	KTW
1/25/17	0538	0101 - 012517 - RS-002-A		girls RR to left of Rm 913	<del>In room</del> Hallway	lower right sink
1/25/17	0539	0101 - 012517 - RS-002-B	" "	<del>In room</del> Hallway	SAA	KTW
1/25/17		0101 - 012517 -		In room Hallway		
1/25/17		0101 - 012517 -		In room Hallway		
1/25/17		0101 - 012517 -		In room Hallway		
1/25/17		0101 - 012517 -		In room Hallway		

LOCATION TYPE: AF = athletic field; CS = cafeteria sink; DF = drinking fountain; IM = ice maker; KS = kindergarten sink; RS = restroom sink; SC = service connection; TL = teachers' lounge. SAMPLE TYPE: A = initial draw; B = flush; C = duplicate

**DEKALB COUNTY SCHOOL DISTRICT  
LEAD IN DRINKING WATER FIELD DATA SHEET**

FACILITY NAME: DEKALB ELEMENTARY SCHOOL OF THE ARTS  
 ADDRESS: 3131 Old Rockbridge Rd. Avondale Estates, GA, 30002

FACILITY ID: 0101

DATE	TIME	SAMPLE ID (Facility ID-Date-Location Type-Sequential #-Sample Type)	NEAREST ROOM	LOCATION (circle)	DESCRIPTION	SAMPLER INIT.
10/18/17	0542	0101 - 101817 - CS-003-A	409	In room Hallway	Double Sink to the left of entrance	(Law)
10/18/17	0543	0101 - 101817 - CS-003-B	↓	In room Hallway	" " Flush	(Law)
10/18/17	0544	0101 - 101817 - CS-004-A		In room Hallway	Double Sink to the left of refrigerator	(Law)
10/18/17	0545	0101 - 101817 - CS-004-B		In room Hallway	" " Flush	(Law)
10/18/17	0546	0101 - 101817 - CS-005-A		In room Hallway	Double Sink to the right of refrigerator	(Law)
10/18/17	0547	0101 - 101817 - CS-005-B		In room Hallway	" " Flush	(Law)
10/18/17	0549	0101 - 101817 - CS-006-A		In room Hallway	Double Sink to the left of waster/dryer	(Law)
10/18/17	0550	0101 - 101817 - CS-006-B		In room Hallway	" " Flush	(Law)
10/18/17	0551	0101 - 101817 - CS-007-A		In room Hallway	Single Sink on Island	(Law)
10/18/17	0552	0101 - 101817 - CS-007-B		In room Hallway	" " Flush	(Law)

LOCATION TYPE: AF = athletic field; CS = cafeteria sink; DF = drinking fountain; IM = ice maker; KS = kindergarten sink; RS = restroom sink; SC = service connection; TL = teachers' lounge. SAMPLE TYPE: A = initial draw; B = flush; C = duplicate

**DEKALB COUNTY SCHOOL DISTRICT  
LEAD IN DRINKING WATER FIELD DATA SHEET**

FACILITY NAME: DEKALB ELEMENTARY SCHOOL OF THE ARTS  
 ADDRESS: 3131 Old Rockbridge Rd. Avondale Estates, GA, 30002

FACILITY ID: 0101

DATE	TIME	SAMPLE ID (Facility ID-Date-Location Type-Sequential #-Sample Type)	NEAREST ROOM	LOCATION (circle)	DESCRIPTION	SAMPLER INIT.
10/18/17	0556	0101 - 101817 - DF-006-A	G7	In room Hallway	Lower Right ElKay DF in Locker Rm G7	(LW)
10/18/17	0557	0101 - 101817 - DF-006-B	↓	In room Hallway	Flush	(LW)
10/18/17	0559	0101 - 101817 - DF-007-A		In room Hallway	Upper Left ElKay DF in Locker Rm G7	(LW)
10/18/17	0600	0101 - 101817 - DF-007-B		In room Hallway		(LW)
10/18/17	0605	0101 - 101817 - DF-001-A		Track + Playground	In room Hallway	Single Haws DF by Playground
10/18/17	0606	0101 - 101817 - DF-001-B	↓	In room Hallway	" " Flush	(LW)
10/18/17	0611	0101 - 101817 - AF-001-A	Tennis	In room Hallway	Single Haws DF by Tennis Court	(LW)
10/18/17	0612	0101 - 101817 - AF-001-B	↓	In room Hallway	" " Flush	(LW)
10/18/17	0621	0101 - 101817 - DF-018-A	608	In room Hallway	Upper left ElKay DF to the (L) Rm 608	(LW)
10/18/17	0622	0101 - 101817 - DF-018-B	608	In room Hallway	" " Flush	(LW)

LOCATION TYPE: AF = athletic field; CS = cafeteria sink; DF = drinking fountain; IM = ice maker; KS = kindergarten sink; RS = restroom sink; SC = service connection; TL = teachers' lounge. SAMPLE TYPE: A = initial draw; B = flush; C = duplicate

**DEKALB COUNTY SCHOOL DISTRICT  
LEAD IN DRINKING WATER FIELD DATA SHEET**

FACILITY NAME: DEKALB ELEMENTARY SCHOOL OF THE ARTS  
 ADDRESS: 3131 Old Rockbridge Rd. Avondale Estates, GA, 30002

FACILITY ID: 0101

DATE	TIME	SAMPLE ID (Facility ID-Date-Location Type-Sequential #-Sample Type)	NEAREST ROOM	LOCATION (circle)	DESCRIPTION	SAMPLER INIT.
10/18/17	0623	0101 - 101817 - DF-019-A	608	In room Hallway	Lower Right Elkay DF to the @ Rm 608	(a)
10/18/17	0624	0101 - 101817 - DF-019-B	↓	In room Hallway	" " Flush	(a)
10/18/17	0627	0101 - 101817 - DF-016-A	Storage Rm 103	In room Hallway	Upper Left Elkay DF near Storage Rm 103	(a)
10/18/17	0628	0101 - 101817 - DF-016-B	↓	In room Hallway	+ RRS " " Flush	(a)
10/18/17	0630	0101 - 101817 - DF-017-A	↓	In room Hallway	Lower Right Elkay DF near Storage Rm 103	(a)
10/18/17	0631	0101 - 101817 - DF-017-B	↓	In room Hallway	+ RRS " " Flush	(a)
10/18/17		0101 - 101817 -		In room Hallway		
10/18/17		0101 - 101817 -		In room Hallway		
10/18/17		0101 - 101817 -		In room Hallway		
10/18/17		0101 - 101817 -		In room Hallway		

LOCATION TYPE: AF = athletic field; CS = cafeteria sink; DF = drinking fountain; IM = ice maker; KS = kindergarten sink; RS = restroom sink; SC = service connection; TL = teachers' lounge. SAMPLE TYPE: A = initial draw; B = flush; C = duplicate

---

**ATTACHMENT B**  
**AES Laboratory Analytical Report**

## Leona Miles

---

**From:** NoReply@aesatlanta.net  
**Sent:** Wednesday, February 8, 2017 9:00 AM  
**To:** leona-miles@aem-net.com; tim-royer@aem-net.com  
**Subject:** DCSD - 0101  
**Attachments:** 1701K49\_REPORT.pdf; 1701K49Invoice.pdf

Please see attached. If you have any questions or need further assistance please contact your project manager at 770-457-8177.

AES Reporting System

ANALYTICAL ENVIRONMENTAL SERVICES, INC.  
3080 Presidential Drive ATLANTA, GA 30340  
Tel: 770-457-8177 Fax: 770-457-8188  
<http://www.aesatlanta.com>

NOTICE OF CONFIDENTIALITY: The information in this email and / or attachments may be legally privileged and is confidential information intended for the use of the individual or entity named in the email address. If the reader of this message is not the intended recipient, you are hereby notified that any use, dissemination, distribution, or copy of this email and / or attachments is strictly prohibited. If you have received this email in error, please notify Analytical Environmental Services Customer Service by telephone at (770) 457-8177 or by email at [info@aesatlanta.com](mailto:info@aesatlanta.com) <<mailto:info@aesatlanta.com>> and delete the message. Thank you



February 08, 2017

Leona Miles  
Atlanta Environmental Mgmt  
2580 NE Expressway  
Atlanta GA 30345

TEL: (404) 329-9006  
FAX: (404) 329-2057

RE: DCSD - 0101

Dear Leona Miles:

Order No: 1701K49

Analytical Environmental Services, Inc. received 60 samples on 1/25/2017 8:45:00 AM for the analyses presented in following report.

No problems were encountered during the analyses. Additionally, all results for the associated Quality Control samples were within EPA and/or AES established limits. Any discrepancies associated with the analyses contained herein will be noted and submitted in the form of a project Case Narrative.

AES's accreditations are as follows:

- NELAC/Florida State Laboratory ID E87582 for analysis of Non-Potable Water, Solid & Chemical Materials, and Drinking Water Microbiology, effective 07/01/16-06/30/17.
- NELAC/Louisiana Agency Interest No. 100818 for or analysis of Non-Potable Water and Solid & Chemical Materials, effective 07/01/16-06/30/17.
- NELAC/Texas Certificate No. T104704509-16-6 for or analysis of Non-Potable Water and Solid & Chemical Materials, effective 03/01/16-02/28/17.
- AIHA-LAP, LLC Laboratory ID: 100671 for Industrial Hygiene samples (Organics, Metals, PCM Asbestos, Gravimetric), Environmental Lead (Paint, Soil, Dust Wipes, Air), and Environmental Microbiology (Fungal) Direct Examination, effective until 09/01/17.

Ioana Pacurar  
Project Manager





ANALYTICAL ENVIRONMENTAL SERVICES, INC

3080 Presidential Drive, Atlanta GA 30340-3704

TEL.: (770) 457-8177 / TOLL-FREE (800) 972-4889 / FAX: (770) 457-8188

CHAIN OF CUSTODY

Work Order: 1701K49

Date: 1/25/17 Page 1 of 6

COMPANY: <b>Atlanta Environmental Management, Inc</b>		ADDRESS: <b>2580 Northeast Expressway, NE Atlanta, GA 30345</b>				ANALYSIS REQUESTED										Visit our website <a href="http://www.aesatlanta.com">www.aesatlanta.com</a> to check on the status of your results, place bottle orders, etc.		No # of Containers
PHONE: (404) 329-9006		FAX: (404) 329-2057				Total Pb Method 200.8										REMARKS		
SAMPLED BY: <i>Cynthia Jackson</i>		SIGNATURE: <i>[Signature]</i>				PRESERVATION (See codes)												I
#	SAMPLE ID	SAMPLED		Grab	Composite	Matrix (See codes)												
		DATE	TIME															
1	0101-012517-DF-001-A	1/25/2017		X		DW											not sampled	
2	0101-012517-DF-001-B	1/25/2017		X		DW											not sampled	
3	0101-012517-DF-002-A	1/25/2017	0528	X		DW	X											
4	0101-012517-DF-002-B	1/25/2017	0529	X		DW	X											
5	0101-012517-DF-003-A	1/25/2017	0530	X		DW	X											
6	0101-012517-DF-003-B	1/25/2017	0531	X		DW	X											
7	0101-012517-DF-004-A	1/25/2017	0522	X		DW	X											
8	0101-012517-DF-004-B	1/25/2017	0523	X		DW	X											
9	0101-012517-DF-005-A	1/25/2017	0524	X		DW	X											
10	0101-012517-DF-005-B	1/25/2017	0525	X		DW	X											
11	0101-012517-DF-006-A	1/25/2017		X		DW											not sampled	
12	0101-012517-DF-006-B	1/25/2017		X		DW											not sampled	
13	0101-012517-DF-007-A	1/25/2017		X		DW											not sampled	
14	0101-012517-DF-007-B	1/25/2017		X		DW											not sampled	
15	0101-012517-DF-008-A	1/25/2017	0510	X		DW	X											
RELINQUISHED BY		DATE/TIME		DATE/TIME		PROJECT INFORMATION										RECEIPT		
1: <i>[Signature]</i>		1/25/17 8:30A		1/25/17 8:30A		PROJECT NAME: <b>DCSD</b>										Total # of Containers		
2: <i>[Signature]</i>		1/25/17 8:45 AM		1/25/17 8:45		PROJECT #: <b>1561-1601</b>										Turnaround Time Request		
3: <i>[Signature]</i>						SITE ADDRESS: <b>101</b>										<input type="radio"/> Standard 5 Business Days <input type="radio"/> 2 Business Day Rush <input type="radio"/> Next Business Day Rush <input type="radio"/> Same Day Rush (auth req.) <input checked="" type="radio"/> Other: 10 business Days		
SPECIAL INSTRUCTIONS/COMMENTS: Preserve at the Lab per protocol		SHIPMENT METHOD				INVOICE TO:										STATE PROGRAM (if any):		
		OUT / / VIA:				(IF DIFFERENT FROM ABOVE)										E-mail? Y/N; Fax? Y/N		
		IN <input checked="" type="radio"/> CLIENT FedEx UPS MAIL COURIER				leona-miles@aem-net.com; tim-royer@aem-net.com										DATA PACKAGE: I II III IV		
		GREYHOUND OTHER				QUOTE #: PO#:												

SAMPLES RECEIVED AFTER 3PM OR SATURDAY ARE CONSIDERED AS RECEIVED ON THE NEXT BUSINESS DAY; IF NO TAT IS MARKED ON COC AES WILL PROCEED AS STANDARD TAT. SAMPLES ARE DISPOSED OF 30 DAYS AFTER COMPLETION OF REPORT UNLESS OTHER ARRANGEMENTS ARE MADE.



ANALYTICAL ENVIRONMENTAL SERVICES, INC

3080 Presidential Drive, Atlanta GA 30340-3704
TEL.: (770) 457-8177 / TOLL-FREE (800) 972-4889 / FAX: (770) 457-8188

CHAIN OF CUSTODY

Work Order: 1701K49

Date: 1/25/17 Page 2 of 60

Form containing company information, analysis requested details, sample list with columns for sample ID, date, time, grab, composite, matrix, and analysis results. Includes sections for relinquished by, received by, project information, and special instructions.

MATRIX CODES: A = Air GW = Groundwater SE = Sediment SO = Soil SW = Surface Water DW = Drinking Water W = Water (BlanDF) O = Other (specify)
PRESERVATIVE CODES: H+I = Hydrochloric acid + ice I = Ice only N = Nitric acid S+I = Sulfuric acid + ice S/M+I = Sodium Bisulfate/Methanol + ice O = Other (specify) NA = None



ANALYTICAL ENVIRONMENTAL SERVICES, INC

3080 Presidential Drive, Atlanta GA 30340-3704
TEL.: (770) 457-8177 / TOLL-FREE (800) 972-4889 / FAX: (770) 457-8188

CHAIN OF CUSTODY

Work Order: 1701K49

Date: 1/25/17 Page 3 of 6

Form containing company information, analysis requested details, sample list with columns for sample ID, date, time, grab, composite, matrix, and remarks. Includes sections for relinquished by, received by, project information, and shipment method.

MATRIX CODES: A = Air GW = Groundwater SE = Sediment SO = Soil SW = Surface Water DW = Drinking Water W = Water (Blanks) O = Other (specify)
PRESERVATIVE CODES: H+I = Hydrochloric acid + ice I = Ice only N = Nitric acid S+I = Sulfuric acid + ice S/M+I = Sodium Bisulfate/Methanol + ice O = Other (specify) NA = None



# ANALYTICAL ENVIRONMENTAL SERVICES, INC

3080 Presidential Drive, Atlanta GA 30340-3704

TEL.: (770) 457-8177 / TOLL-FREE (800) 972-4889 / FAX: (770) 457-8188

# CHAIN OF CUSTODY

Work Order: 1701K49Date: 1/25/17 Page 4 of 6

COMPANY: <b>Atlanta Environmental Management, Inc</b>		ADDRESS: <b>2580 Northeast Expressway, NE Atlanta, GA 30345</b>		ANALYSIS REQUESTED								Visit our website <a href="http://www.aesatlanta.com">www.aesatlanta.com</a> to check on the status of your results, place bottle orders, etc.	No # of Containers						
PHONE: <b>(404) 329-9006</b>		FAX: <b>(404) 329-2057</b>		PRESERVATION (See codes)										REMARKS					
SAMPLED BY: <i>Cynthia Jackson</i>		SIGNATURE: <i>[Signature]</i>																	
#	SAMPLE ID	SAMPLED		Grab	Composite	Matrix (See codes)	Total Pb Method 200.8								REMARKS				
		DATE	TIME				I												
1	0101-012517-RS-001-A	1/25/2017	0510	X		DW	X												
2	0101-012517-RS-001-B	1/25/2017	0511	X		DW	X												
3	0101-012517-RS-002-A	1/25/2017	0538	X		DW	X												
4	0101-012517-RS-002-B	1/25/2017	0539	X		DW	X												
5	0101-012517-CS-001-A	1/25/2017	0504	X		DW	X												
6	0101-012517-CS-001-B	1/25/2017	0505	X		DW	X												
7	<del>4053-012417-IM-001-A</del>	<del>1/25/2017</del>		<del>X</del>		<del>DW</del>													
8	<del>0101-012517-AF-001-A</del>	<del>1/25/2017</del>		<del>X</del>		<del>DW</del>													
9	<del>0101-012517-AF-001-B</del>	<del>1/25/2017</del>		<del>X</del>		<del>DW</del>													
10	<del>4053-012417-SC-001-A</del>	<del>1/25/2017</del>		<del>X</del>		<del>DW</del>													
11	0101-012517-DF-028-A	1/25/2017	0501	X		DW	X												
12	0101-012517-DF-028-B	1/25/2017	0502	X		DW	X												
13	0101-012517-DF-029-A	1/25/2017	0503	X		DW	X												
14	0101-012517-DF-029-B	1/25/2017	0504	X		DW	X												
15		1/25/2017		X		DW													
RELINQUISHED BY		DATE/TIME		RECEIVED BY		DATE/TIME		PROJECT INFORMATION								RECEIPT			
1: <i>[Signature]</i>		1/25/17 8:30a		1: <i>[Signature]</i>		1/25/17 8:30a		PROJECT NAME: <b>DCSD</b>								Total # of Containers			
2: <i>[Signature]</i>		1/25/17 8:45a		2: <i>[Signature]</i>		1/25/17 8:45		PROJECT #: <b>1561-1601</b>								Turnaround Time Request			
3: <i>[Signature]</i>				3: <i>[Signature]</i>				SITE ADDRESS: <b>101</b>								<input type="radio"/> Standard 5 Business Days <input type="radio"/> 2 Business Day Rush <input type="radio"/> Next Business Day Rush <input type="radio"/> Same Day Rush (auth req.) <input checked="" type="radio"/> Other: 10 business Days			
SPECIAL INSTRUCTIONS/COMMENTS: Preserve at the Lab per protocol				SHIPMENT METHOD				INVOICE TO: (IF DIFFERENT FROM ABOVE) <b>leona-miles@aem-net.com; tim-royer@aem-net.com</b>								STATE PROGRAM (if any): _____			
				OUT / / VIA: IN <input checked="" type="radio"/> CLIENT FedEx UPS MAIL COURIER GREYHOUND OTHER _____				QUOTE #: _____ PO#: _____								E-mail? Y/N; Fax? Y/N DATA PACKAGE: I II III IV			
<p>SAMPLES RECEIVED AFTER 3PM OR SATURDAY ARE CONSIDERED AS RECEIVED ON THE NEXT BUSINESS DAY; IF NO TAT IS MARKED ON COC AES WILL PROCEED AS STANDARD TAT.</p> <p>SAMPLES ARE DISPOSED OF 30 DAYS AFTER COMPLETION OF REPORT UNLESS OTHER ARRANGEMENTS ARE MADE.</p>																			

MATRIX CODES: A = Air GW = Groundwater SE = Sediment SO = Soil SW = Surface Water DW = Drinking Water W = Water (Blanks) O = Other (specify)

PRESERVATIVE CODES: H+I = Hydrochloric acid + ice I = Ice only N = Nitric acid S+I = Sulfuric acid + ice S/M+I = Sodium Bisulfate/Methanol + ice O = Other (specify) NA = None



**ANALYTICAL ENVIRONMENTAL SERVICES, INC**  
 3080 Presidential Drive, Atlanta GA 30340-3704  
 TEL.: (770) 457-8177 / TOLL-FREE (800) 972-4889 / FAX: (770) 457-8188

**CHAIN OF CUSTODY**

Work Order: 1701K49

Date: 1/25/17 Page 5 of 6

COMPANY: <b>Atlanta Environmental Management, Inc</b>		ADDRESS: <b>2580 Northeast Expressway, NE Atlanta, GA 30345</b>				ANALYSIS REQUESTED										Visit our website <a href="http://www.aesatlanta.com">www.aesatlanta.com</a> to check on the status of your results, place bottle orders, etc.		No # of Containers
PHONE: <b>(404) 329-9006</b>		FAX: <b>(404) 329-2057</b>				Total Pb Method 200.8												
SAMPLED BY: <i>Cynthia Jackson</i>		SIGNATURE: <i>[Signature]</i>				PRESERVATION (See codes)										REMARKS		
#	SAMPLE ID	SAMPLED		Grab	Composite	Matrix (See codes)	I											
		DATE	TIME															
1	0101-012517-DF-023-A	1/25/2017	0529	X		DW	X											
2	0101-012517-DF-023-B	1/25/2017	0530	X		DW	X											
3	0101-012517-DF-024-A	1/25/2017	0533	X		DW	X											
4	0101-012517-DF-024-B	1/25/2017	0534	X		DW	X											
5	0101-012517-DF-025-A	1/25/2017	0535	X		DW	X											
6	0101-012517-DF-025-B	1/25/2017	0536	X		DW	X											
7	0101-012517-DF-026-A	1/25/2017	0521	X		DW	X											
8	0101-012517-DF-026-B	1/25/2017	0522	X		DW	X											
9	0101-012517-DF-027-B	1/25/2017	0539	X		DW	X											
10	0101-012517-DF-027-A	1/25/2017	0540	X		DW	X											
11	0101-012517-TL-001-A	1/25/2017	0536	X		DW	X											
12	0101-012517-TL-001-B	1/25/2017	0537	X		DW	X											
13	0101-012517-TL-002-A	1/25/2017	0515	X		DW	X											
14	0101-012517-TL-002-B	1/25/2017	0517	X		DW	X											
15	0101-012517-TL-002-C	1/25/2017	0516	X		DW	X											

RELINQUISHED BY		DATE/TIME	RECEIVED BY	DATE/TIME	PROJECT INFORMATION				RECEIPT	
1: <i>[Signature]</i>		1/25/2017 8:30A	2: <i>[Signature]</i>	1/25/17 8:30A	PROJECT NAME: <b>DCSD</b>				Total # of Containers	
2: <i>[Signature]</i>		1/25/2017 8:45A	3: <i>[Signature]</i>	1/25/17 8:45A	PROJECT #: <b>1561-1601</b>				Turnaround Time Request	
3: <i>[Signature]</i>					SITE ADDRESS: <b>101</b>				<input type="radio"/> Standard 5 Business Days <input type="radio"/> 2 Business Day Rush <input type="radio"/> Next Business Day Rush <input type="radio"/> Same Day Rush (auth req.) <input checked="" type="radio"/> Other: 10 business Days	
SPECIAL INSTRUCTIONS/COMMENTS: Preserve at the Lab per protocol			SHIPMENT METHOD		SEND REPORT TO: <b>Leona Miles and Tim Royer</b>				STATE PROGRAM (if any):	
			OUT / / VIA: IN <u>CLIENT</u> FedEx UPS MAIL COURIER GREYHOUND OTHER		INVOICE TO: (IF DIFFERENT FROM ABOVE) leona-miles@aem-net.com; tim-royer@aem-net.com				E-mail? Y/N; Fax? Y/N	
					QUOTE #: _____ PO#: _____				DATA PACKAGE: I II III IV	

SAMPLES RECEIVED AFTER 3PM OR SATURDAY ARE CONSIDERED AS RECEIVED ON THE NEXT BUSINESS DAY; IF NO TAT IS MARKED ON COC AES WILL PROCEED AS STANDARD TAT.  
 SAMPLES ARE DISPOSED OF 30 DAYS AFTER COMPLETION OF REPORT UNLESS OTHER ARRANGEMENTS ARE MADE.

MATRIX CODES: A = Air GW = Groundwater SE = Sediment SO = Soil SW = Surface Water DW = Drinking Water W = Water (Blanks) O = Other (specify)  
 PRESERVATIVE CODES: H+I = Hydrochloric acid + ice I = Ice only N = Nitric acid S+I = Sulfuric acid + ice S/M+I = Sodium Bisulfate/Methanol + ice O = Other (specify) NA = None



ANALYTICAL ENVIRONMENTAL SERVICES, INC

3080 Presidential Drive, Atlanta GA 30340-3704

TEL.: (770) 457-8177 / TOLL-FREE (800) 972-4889 / FAX: (770) 457-8188

CHAIN OF CUSTODY

Work Order: 1701K49

Date: 1/25/17 Page 6 of 6

COMPANY: <b>Atlanta Environmental Management, Inc</b>		ADDRESS: <b>2580 Northeast Expressway, NE Atlanta, GA 30345</b>			ANALYSIS REQUESTED								Visit our website <a href="http://www.aesatlanta.com">www.aesatlanta.com</a> to check on the status of your results, place bottle orders, etc.	No # of Containers						
PHONE: <b>(404) 329-9006</b>		FAX: <b>(404) 329-2057</b>			Total Pb Method 200.8															
SAMPLED BY: <i>Cynthia Jackson</i>		SIGNATURE: <i>[Signature]</i>			PRESERVATION (See codes)															
#	SAMPLE ID	DATE	TIME	Grab	Composite	Matrix (See codes)	I					REMARKS								
1	0101-012517-CS-002-A	1/25/17	0508	X			X													
2	0101-012517-CS-002-B	1/25/17	0509	X			X													
3	0101-012517-1M-001-A	1/25/17	0506	X			X													
4	0101-012517-5C-001-A	1/25/17	0458	X			X													
5																				
6																				
7																				
8																				
9																				
10																				
11																				
12																				
13																				
14																				
15																				
RELINQUISHED BY		DATE/TIME		RECEIVED BY		DATE/TIME		PROJECT INFORMATION					RECEIPT							
1: <i>[Signature]</i>		1/25/2017 8:30A		1: <i>[Signature]</i>		1/25/17 8:30A		PROJECT NAME: <b>DCSD</b>					Total # of Containers							
2: <i>[Signature]</i>		1/25/17 8:45A		2: <i>[Signature]</i>		1/25/17 8:45		PROJECT #: <b>1561-1601</b>					Turnaround Time Request							
3: <i>[Signature]</i>				3: <i>[Signature]</i>				SITE ADDRESS: <b>101</b>					<input type="radio"/> Standard 5 Business Days <input type="radio"/> 2 Business Day Rush <input type="radio"/> Next Business Day Rush <input type="radio"/> Same Day Rush (auth req.) <input checked="" type="radio"/> Other: 10 business Days							
SPECIAL INSTRUCTIONS/COMMENTS: Preserve at the Lab per protocol				SHIPMENT METHOD OUT / / VIA: IN <input checked="" type="radio"/> FedEx / / VIA: CLIENT FedEx UPS MAIL COURIER GREYHOUND OTHER _____				INVOICE TO: (IF DIFFERENT FROM ABOVE) leona-miles@aem-net.com; tim-royer@aem-net.com					STATE PROGRAM (if any): _____							
								QUOTE #: _____ PO#: _____					E-mail? Y/N; Fax? Y/N DATA PACKAGE: I II III IV							

SAMPLES RECEIVED AFTER 3PM OR SATURDAY ARE CONSIDERED AS RECEIVED ON THE NEXT BUSINESS DAY; IF NO TAT IS MARKED ON COC AES WILL PROCEED AS STANDARD TAT.  
SAMPLES ARE DISPOSED OF 30 DAYS AFTER COMPLETION OF REPORT UNLESS OTHER ARRANGEMENTS ARE MADE.

**Analytical Environmental Services, Inc**

**Date:** 8-Feb-17

<b>Client:</b> Atlanta Environmental Mgmt	<b>Client Sample ID:</b> 0101-012517-DF-002-A
<b>Project Name:</b> DCSD - 0101	<b>Collection Date:</b> 1/25/2017 5:28:00 AM
<b>Lab ID:</b> 1701K49-001	<b>Matrix:</b> Drinking Water

Analyses	Result	Reporting Limit	Qual	Units	BatchID	Dilution Factor	Date Analyzed	Analyst
<b>Trace Elements by ICP/MS E200.8</b>								
				<b>(E200.2)</b>				
Lead	BRL	1.00		ug/L	237244	1	02/01/2017 04:51	JS

**Qualifiers:**

- \* Value exceeds maximum contaminant level
- BRL Below reporting limit
- H Holding times for preparation or analysis exceeded
- N Analyte not NELAC certified
- B Analyte detected in the associated method blank
- > Greater than Result value

- E Estimated (value above quantitation range)
- S Spike Recovery outside limits due to matrix
- Narr See case narrative
- NC Not confirmed
- < Less than Result value
- J Estimated value detected below Reporting Limit

**Analytical Environmental Services, Inc**

**Date:** 8-Feb-17

<b>Client:</b> Atlanta Environmental Mgmt	<b>Client Sample ID:</b> 0101-012517-DF-002-B
<b>Project Name:</b> DCSD - 0101	<b>Collection Date:</b> 1/25/2017 5:29:00 AM
<b>Lab ID:</b> 1701K49-002	<b>Matrix:</b> Drinking Water

Analyses	Result	Reporting Limit	Qual	Units	BatchID	Dilution Factor	Date Analyzed	Analyst
<b>Trace Elements by ICP/MS E200.8</b>					<b>(E200.2)</b>			
Lead	BRL	1.00		ug/L	237244	1	02/01/2017 05:23	JS

**Qualifiers:**

- \* Value exceeds maximum contaminant level
- BRL Below reporting limit
- H Holding times for preparation or analysis exceeded
- N Analyte not NELAC certified
- B Analyte detected in the associated method blank
- > Greater than Result value

- E Estimated (value above quantitation range)
- S Spike Recovery outside limits due to matrix
- Narr See case narrative
- NC Not confirmed
- < Less than Result value
- J Estimated value detected below Reporting Limit



**Analytical Environmental Services, Inc**

**Date:** 8-Feb-17

<b>Client:</b> Atlanta Environmental Mgmt	<b>Client Sample ID:</b> 0101-012517-DF-003-A
<b>Project Name:</b> DCSD - 0101	<b>Collection Date:</b> 1/25/2017 5:30:00 AM
<b>Lab ID:</b> 1701K49-003	<b>Matrix:</b> Drinking Water

Analyses	Result	Reporting Limit	Qual	Units	BatchID	Dilution Factor	Date Analyzed	Analyst
<b>Trace Elements by ICP/MS E200.8</b>					<b>(E200.2)</b>			
Lead	BRL	1.00		ug/L	237244	1	02/01/2017 05:29	JS

**Qualifiers:**

- \* Value exceeds maximum contaminant level
- BRL Below reporting limit
- H Holding times for preparation or analysis exceeded
- N Analyte not NELAC certified
- B Analyte detected in the associated method blank
- > Greater than Result value

- E Estimated (value above quantitation range)
- S Spike Recovery outside limits due to matrix
- Narr See case narrative
- NC Not confirmed
- < Less than Result value
- J Estimated value detected below Reporting Limit

**Analytical Environmental Services, Inc**

**Date:** 8-Feb-17

<b>Client:</b> Atlanta Environmental Mgmt	<b>Client Sample ID:</b> 0101-012517-DF-003-B
<b>Project Name:</b> DCSD - 0101	<b>Collection Date:</b> 1/25/2017 5:31:00 AM
<b>Lab ID:</b> 1701K49-004	<b>Matrix:</b> Drinking Water

Analyses	Result	Reporting Limit	Qual	Units	BatchID	Dilution Factor	Date Analyzed	Analyst
<b>Trace Elements by ICP/MS E200.8</b>					<b>(E200.2)</b>			
Lead	1.15	1.00		ug/L	237244	1	02/01/2017 05:35	JS

**Qualifiers:**

- \* Value exceeds maximum contaminant level
- BRL Below reporting limit
- H Holding times for preparation or analysis exceeded
- N Analyte not NELAC certified
- B Analyte detected in the associated method blank
- > Greater than Result value

- E Estimated (value above quantitation range)
- S Spike Recovery outside limits due to matrix
- Narr See case narrative
- NC Not confirmed
- < Less than Result value
- J Estimated value detected below Reporting Limit

**Analytical Environmental Services, Inc**

**Date:** 8-Feb-17

<b>Client:</b> Atlanta Environmental Mgmt	<b>Client Sample ID:</b> 0101-012517-DF-004-A
<b>Project Name:</b> DCSD - 0101	<b>Collection Date:</b> 1/25/2017 5:22:00 AM
<b>Lab ID:</b> 1701K49-005	<b>Matrix:</b> Drinking Water

Analyses	Result	Reporting Limit	Qual	Units	BatchID	Dilution Factor	Date Analyzed	Analyst
<b>Trace Elements by ICP/MS E200.8</b>					<b>(E200.2)</b>			
Lead	BRL	1.00		ug/L	237244	1	02/01/2017 05:54	JS

**Qualifiers:**

- \* Value exceeds maximum contaminant level
- BRL Below reporting limit
- H Holding times for preparation or analysis exceeded
- N Analyte not NELAC certified
- B Analyte detected in the associated method blank
- > Greater than Result value

- E Estimated (value above quantitation range)
- S Spike Recovery outside limits due to matrix
- Narr See case narrative
- NC Not confirmed
- < Less than Result value
- J Estimated value detected below Reporting Limit

**Analytical Environmental Services, Inc**

**Date:** 8-Feb-17

<b>Client:</b> Atlanta Environmental Mgmt	<b>Client Sample ID:</b> 0101-012517-DF-004-B
<b>Project Name:</b> DCSD - 0101	<b>Collection Date:</b> 1/25/2017 5:23:00 AM
<b>Lab ID:</b> 1701K49-006	<b>Matrix:</b> Drinking Water

Analyses	Result	Reporting Limit	Qual	Units	BatchID	Dilution Factor	Date Analyzed	Analyst
<b>Trace Elements by ICP/MS E200.8</b>					<b>(E200.2)</b>			
Lead	BRL	1.00		ug/L	237244	1	02/01/2017 06:00	JS

**Qualifiers:**

- \* Value exceeds maximum contaminant level
- BRL Below reporting limit
- H Holding times for preparation or analysis exceeded
- N Analyte not NELAC certified
- B Analyte detected in the associated method blank
- > Greater than Result value

- E Estimated (value above quantitation range)
- S Spike Recovery outside limits due to matrix
- Narr See case narrative
- NC Not confirmed
- < Less than Result value
- J Estimated value detected below Reporting Limit

**Analytical Environmental Services, Inc**

**Date:** 8-Feb-17

<b>Client:</b> Atlanta Environmental Mgmt	<b>Client Sample ID:</b> 0101-012517-DF-005-A
<b>Project Name:</b> DCSD - 0101	<b>Collection Date:</b> 1/25/2017 5:24:00 AM
<b>Lab ID:</b> 1701K49-007	<b>Matrix:</b> Drinking Water

Analyses	Result	Reporting Limit	Qual	Units	BatchID	Dilution Factor	Date Analyzed	Analyst
<b>Trace Elements by ICP/MS E200.8</b>					<b>(E200.2)</b>			
Lead	BRL	1.00		ug/L	237244	1	02/01/2017 06:06	JS

**Qualifiers:**

- \* Value exceeds maximum contaminant level
- BRL Below reporting limit
- H Holding times for preparation or analysis exceeded
- N Analyte not NELAC certified
- B Analyte detected in the associated method blank
- > Greater than Result value

- E Estimated (value above quantitation range)
- S Spike Recovery outside limits due to matrix
- Narr See case narrative
- NC Not confirmed
- < Less than Result value
- J Estimated value detected below Reporting Limit

**Analytical Environmental Services, Inc**

**Date:** 8-Feb-17

<b>Client:</b> Atlanta Environmental Mgmt	<b>Client Sample ID:</b> 0101-012517-DF-005-B
<b>Project Name:</b> DCSD - 0101	<b>Collection Date:</b> 1/25/2017 5:25:00 AM
<b>Lab ID:</b> 1701K49-008	<b>Matrix:</b> Drinking Water

Analyses	Result	Reporting Limit	Qual	Units	BatchID	Dilution Factor	Date Analyzed	Analyst
<b>Trace Elements by ICP/MS E200.8</b>					<b>(E200.2)</b>			
Lead	BRL	1.00		ug/L	237244	1	02/01/2017 06:12	JS

**Qualifiers:**

- \* Value exceeds maximum contaminant level
- BRL Below reporting limit
- H Holding times for preparation or analysis exceeded
- N Analyte not NELAC certified
- B Analyte detected in the associated method blank
- > Greater than Result value

- E Estimated (value above quantitation range)
- S Spike Recovery outside limits due to matrix
- Narr See case narrative
- NC Not confirmed
- < Less than Result value
- J Estimated value detected below Reporting Limit

**Analytical Environmental Services, Inc**

**Date:** 8-Feb-17

<b>Client:</b> Atlanta Environmental Mgmt	<b>Client Sample ID:</b> 0101-012517-DF-008-A
<b>Project Name:</b> DCSD - 0101	<b>Collection Date:</b> 1/25/2017 5:10:00 AM
<b>Lab ID:</b> 1701K49-009	<b>Matrix:</b> Drinking Water

Analyses	Result	Reporting Limit	Qual	Units	BatchID	Dilution Factor	Date Analyzed	Analyst
<b>Trace Elements by ICP/MS E200.8</b>					<b>(E200.2)</b>			
Lead	BRL	1.00		ug/L	237244	1	02/01/2017 06:18	JS

**Qualifiers:**

- \* Value exceeds maximum contaminant level
- BRL Below reporting limit
- H Holding times for preparation or analysis exceeded
- N Analyte not NELAC certified
- B Analyte detected in the associated method blank
- > Greater than Result value

- E Estimated (value above quantitation range)
- S Spike Recovery outside limits due to matrix
- Narr See case narrative
- NC Not confirmed
- < Less than Result value
- J Estimated value detected below Reporting Limit

**Analytical Environmental Services, Inc**

**Date:** 8-Feb-17

<b>Client:</b> Atlanta Environmental Mgmt	<b>Client Sample ID:</b> 0101-012517-DF-008-B
<b>Project Name:</b> DCSD - 0101	<b>Collection Date:</b> 1/25/2017 5:11:00 AM
<b>Lab ID:</b> 1701K49-010	<b>Matrix:</b> Drinking Water

Analyses	Result	Reporting Limit	Qual	Units	BatchID	Dilution Factor	Date Analyzed	Analyst
<b>Trace Elements by ICP/MS E200.8</b>					<b>(E200.2)</b>			
Lead	BRL	1.00		ug/L	237244	1	02/01/2017 06:25	JS

**Qualifiers:**

- \* Value exceeds maximum contaminant level
- BRL Below reporting limit
- H Holding times for preparation or analysis exceeded
- N Analyte not NELAC certified
- B Analyte detected in the associated method blank
- > Greater than Result value

- E Estimated (value above quantitation range)
- S Spike Recovery outside limits due to matrix
- Narr See case narrative
- NC Not confirmed
- < Less than Result value
- J Estimated value detected below Reporting Limit



**Analytical Environmental Services, Inc**

**Date:** 8-Feb-17

<b>Client:</b> Atlanta Environmental Mgmt	<b>Client Sample ID:</b> 0101-012517-DF-009-A
<b>Project Name:</b> DCSD - 0101	<b>Collection Date:</b> 1/25/2017 5:12:00 AM
<b>Lab ID:</b> 1701K49-011	<b>Matrix:</b> Drinking Water

Analyses	Result	Reporting Limit	Qual	Units	BatchID	Dilution Factor	Date Analyzed	Analyst
<b>Trace Elements by ICP/MS E200.8</b>					<b>(E200.2)</b>			
Lead	BRL	1.00		ug/L	237244	1	02/01/2017 05:10	JS

**Qualifiers:**

- \* Value exceeds maximum contaminant level
- BRL Below reporting limit
- H Holding times for preparation or analysis exceeded
- N Analyte not NELAC certified
- B Analyte detected in the associated method blank
- > Greater than Result value

- E Estimated (value above quantitation range)
- S Spike Recovery outside limits due to matrix
- Narr See case narrative
- NC Not confirmed
- < Less than Result value
- J Estimated value detected below Reporting Limit

**Analytical Environmental Services, Inc**

**Date:** 8-Feb-17

<b>Client:</b> Atlanta Environmental Mgmt	<b>Client Sample ID:</b> 0101-012517-DF-009-B
<b>Project Name:</b> DCSD - 0101	<b>Collection Date:</b> 1/25/2017 5:13:00 AM
<b>Lab ID:</b> 1701K49-012	<b>Matrix:</b> Drinking Water

Analyses	Result	Reporting Limit	Qual	Units	BatchID	Dilution Factor	Date Analyzed	Analyst
<b>Trace Elements by ICP/MS E200.8</b>					<b>(E200.2)</b>			
Lead	BRL	1.00		ug/L	237244	1	02/01/2017 06:31	JS

**Qualifiers:**

- \* Value exceeds maximum contaminant level
- BRL Below reporting limit
- H Holding times for preparation or analysis exceeded
- N Analyte not NELAC certified
- B Analyte detected in the associated method blank
- > Greater than Result value

- E Estimated (value above quantitation range)
- S Spike Recovery outside limits due to matrix
- Narr See case narrative
- NC Not confirmed
- < Less than Result value
- J Estimated value detected below Reporting Limit

**Analytical Environmental Services, Inc**

**Date:** 8-Feb-17

<b>Client:</b> Atlanta Environmental Mgmt	<b>Client Sample ID:</b> 0101-012517-DF-010-A
<b>Project Name:</b> DCSD - 0101	<b>Collection Date:</b> 1/25/2017 5:33:00 AM
<b>Lab ID:</b> 1701K49-013	<b>Matrix:</b> Drinking Water

Analyses	Result	Reporting Limit	Qual	Units	BatchID	Dilution Factor	Date Analyzed	Analyst
<b>Trace Elements by ICP/MS E200.8</b>					<b>(E200.2)</b>			
Lead	BRL	1.00		ug/L	237244	1	02/01/2017 06:37	JS

**Qualifiers:**

- \* Value exceeds maximum contaminant level
- BRL Below reporting limit
- H Holding times for preparation or analysis exceeded
- N Analyte not NELAC certified
- B Analyte detected in the associated method blank
- > Greater than Result value

- E Estimated (value above quantitation range)
- S Spike Recovery outside limits due to matrix
- Narr See case narrative
- NC Not confirmed
- < Less than Result value
- J Estimated value detected below Reporting Limit

**Analytical Environmental Services, Inc**

**Date:** 8-Feb-17

<b>Client:</b> Atlanta Environmental Mgmt	<b>Client Sample ID:</b> 0101-012517-DF-010-B
<b>Project Name:</b> DCSD - 0101	<b>Collection Date:</b> 1/25/2017 5:34:00 AM
<b>Lab ID:</b> 1701K49-014	<b>Matrix:</b> Drinking Water

Analyses	Result	Reporting Limit	Qual	Units	BatchID	Dilution Factor	Date Analyzed	Analyst
<b>Trace Elements by ICP/MS E200.8</b>					<b>(E200.2)</b>			
Lead	BRL	1.00		ug/L	237244	1	02/01/2017 06:43	JS

**Qualifiers:**

- \* Value exceeds maximum contaminant level
- BRL Below reporting limit
- H Holding times for preparation or analysis exceeded
- N Analyte not NELAC certified
- B Analyte detected in the associated method blank
- > Greater than Result value

- E Estimated (value above quantitation range)
- S Spike Recovery outside limits due to matrix
- Narr See case narrative
- NC Not confirmed
- < Less than Result value
- J Estimated value detected below Reporting Limit

**Analytical Environmental Services, Inc**

**Date:** 8-Feb-17

<b>Client:</b> Atlanta Environmental Mgmt	<b>Client Sample ID:</b> 0101-012517-DF-011-A
<b>Project Name:</b> DCSD - 0101	<b>Collection Date:</b> 1/25/2017 5:31:00 AM
<b>Lab ID:</b> 1701K49-015	<b>Matrix:</b> Drinking Water

Analyses	Result	Reporting Limit	Qual	Units	BatchID	Dilution Factor	Date Analyzed	Analyst
<b>Trace Elements by ICP/MS E200.8</b>					<b>(E200.2)</b>			
Lead	BRL	1.00		ug/L	237244	1	02/01/2017 06:50	JS

**Qualifiers:**

- \* Value exceeds maximum contaminant level
- BRL Below reporting limit
- H Holding times for preparation or analysis exceeded
- N Analyte not NELAC certified
- B Analyte detected in the associated method blank
- > Greater than Result value

- E Estimated (value above quantitation range)
- S Spike Recovery outside limits due to matrix
- Narr See case narrative
- NC Not confirmed
- < Less than Result value
- J Estimated value detected below Reporting Limit

**Analytical Environmental Services, Inc**

**Date:** 8-Feb-17

<b>Client:</b> Atlanta Environmental Mgmt	<b>Client Sample ID:</b> 0101-012517-DF-011-B
<b>Project Name:</b> DCSD - 0101	<b>Collection Date:</b> 1/25/2017 5:32:00 AM
<b>Lab ID:</b> 1701K49-016	<b>Matrix:</b> Drinking Water

Analyses	Result	Reporting Limit	Qual	Units	BatchID	Dilution Factor	Date Analyzed	Analyst
<b>Trace Elements by ICP/MS E200.8</b>					<b>(E200.2)</b>			
Lead	BRL	1.00		ug/L	237244	1	02/01/2017 07:08	JS

**Qualifiers:**

- \* Value exceeds maximum contaminant level
- BRL Below reporting limit
- H Holding times for preparation or analysis exceeded
- N Analyte not NELAC certified
- B Analyte detected in the associated method blank
- > Greater than Result value

- E Estimated (value above quantitation range)
- S Spike Recovery outside limits due to matrix
- Narr See case narrative
- NC Not confirmed
- < Less than Result value
- J Estimated value detected below Reporting Limit

**Analytical Environmental Services, Inc**

**Date:** 8-Feb-17

<b>Client:</b> Atlanta Environmental Mgmt	<b>Client Sample ID:</b> 0101-012517-DF-012-A
<b>Project Name:</b> DCSD - 0101	<b>Collection Date:</b> 1/25/2017 5:13:00 AM
<b>Lab ID:</b> 1701K49-017	<b>Matrix:</b> Drinking Water

Analyses	Result	Reporting Limit	Qual	Units	BatchID	Dilution Factor	Date Analyzed	Analyst
<b>Trace Elements by ICP/MS E200.8</b>					<b>(E200.2)</b>			
Lead	BRL	1.00		ug/L	237244	1	02/01/2017 07:14	JS

**Qualifiers:**

- \* Value exceeds maximum contaminant level
- BRL Below reporting limit
- H Holding times for preparation or analysis exceeded
- N Analyte not NELAC certified
- B Analyte detected in the associated method blank
- > Greater than Result value

- E Estimated (value above quantitation range)
- S Spike Recovery outside limits due to matrix
- Narr See case narrative
- NC Not confirmed
- < Less than Result value
- J Estimated value detected below Reporting Limit

**Analytical Environmental Services, Inc**

**Date:** 8-Feb-17

<b>Client:</b> Atlanta Environmental Mgmt	<b>Client Sample ID:</b> 0101-012517-DF-012-B
<b>Project Name:</b> DCSD - 0101	<b>Collection Date:</b> 1/25/2017 5:14:00 AM
<b>Lab ID:</b> 1701K49-018	<b>Matrix:</b> Drinking Water

Analyses	Result	Reporting Limit	Qual	Units	BatchID	Dilution Factor	Date Analyzed	Analyst
<b>Trace Elements by ICP/MS E200.8</b>					<b>(E200.2)</b>			
Lead	BRL	1.00		ug/L	237244	1	02/01/2017 07:21	JS

**Qualifiers:**

- \* Value exceeds maximum contaminant level
- BRL Below reporting limit
- H Holding times for preparation or analysis exceeded
- N Analyte not NELAC certified
- B Analyte detected in the associated method blank
- > Greater than Result value

- E Estimated (value above quantitation range)
- S Spike Recovery outside limits due to matrix
- Narr See case narrative
- NC Not confirmed
- < Less than Result value
- J Estimated value detected below Reporting Limit



**Analytical Environmental Services, Inc**

**Date:** 8-Feb-17

<b>Client:</b> Atlanta Environmental Mgmt	<b>Client Sample ID:</b> 0101-012517-DF-013-A
<b>Project Name:</b> DCSD - 0101	<b>Collection Date:</b> 1/25/2017 5:24:00 AM
<b>Lab ID:</b> 1701K49-019	<b>Matrix:</b> Drinking Water

Analyses	Result	Reporting Limit	Qual	Units	BatchID	Dilution Factor	Date Analyzed	Analyst
<b>Trace Elements by ICP/MS E200.8</b>					<b>(E200.2)</b>			
Lead	BRL	1.00		ug/L	237244	1	02/01/2017 07:27	JS

**Qualifiers:**

- \* Value exceeds maximum contaminant level
- BRL Below reporting limit
- H Holding times for preparation or analysis exceeded
- N Analyte not NELAC certified
- B Analyte detected in the associated method blank
- > Greater than Result value

- E Estimated (value above quantitation range)
- S Spike Recovery outside limits due to matrix
- Narr See case narrative
- NC Not confirmed
- < Less than Result value
- J Estimated value detected below Reporting Limit

**Analytical Environmental Services, Inc**

**Date:** 8-Feb-17

<b>Client:</b> Atlanta Environmental Mgmt	<b>Client Sample ID:</b> 0101-012517-DF-013-B
<b>Project Name:</b> DCSD - 0101	<b>Collection Date:</b> 1/25/2017 5:25:00 AM
<b>Lab ID:</b> 1701K49-020	<b>Matrix:</b> Drinking Water

Analyses	Result	Reporting Limit	Qual	Units	BatchID	Dilution Factor	Date Analyzed	Analyst
<b>Trace Elements by ICP/MS E200.8</b>					<b>(E200.2)</b>			
Lead	BRL	1.00		ug/L	237244	1	02/01/2017 07:33	JS

**Qualifiers:**

- \* Value exceeds maximum contaminant level
- BRL Below reporting limit
- H Holding times for preparation or analysis exceeded
- N Analyte not NELAC certified
- B Analyte detected in the associated method blank
- > Greater than Result value

- E Estimated (value above quantitation range)
- S Spike Recovery outside limits due to matrix
- Narr See case narrative
- NC Not confirmed
- < Less than Result value
- J Estimated value detected below Reporting Limit

**Analytical Environmental Services, Inc**

**Date:** 8-Feb-17

<b>Client:</b> Atlanta Environmental Mgmt	<b>Client Sample ID:</b> 0101-012517-DF-014-A
<b>Project Name:</b> DCSD - 0101	<b>Collection Date:</b> 1/25/2017 5:22:00 AM
<b>Lab ID:</b> 1701K49-021	<b>Matrix:</b> Drinking Water

Analyses	Result	Reporting Limit	Qual	Units	BatchID	Dilution Factor	Date Analyzed	Analyst
<b>Trace Elements by ICP/MS E200.8</b>					<b>(E200.2)</b>			
Lead	BRL	1.00		ug/L	237230	1	01/31/2017 19:39	JR

**Qualifiers:**

- \* Value exceeds maximum contaminant level
- BRL Below reporting limit
- H Holding times for preparation or analysis exceeded
- N Analyte not NELAC certified
- B Analyte detected in the associated method blank
- > Greater than Result value

- E Estimated (value above quantitation range)
- S Spike Recovery outside limits due to matrix
- Narr See case narrative
- NC Not confirmed
- < Less than Result value
- J Estimated value detected below Reporting Limit

**Analytical Environmental Services, Inc**

**Date:** 8-Feb-17

<b>Client:</b> Atlanta Environmental Mgmt	<b>Client Sample ID:</b> 0101-012517-DF-014-B
<b>Project Name:</b> DCSD - 0101	<b>Collection Date:</b> 1/25/2017 5:23:00 AM
<b>Lab ID:</b> 1701K49-022	<b>Matrix:</b> Drinking Water

Analyses	Result	Reporting Limit	Qual	Units	BatchID	Dilution Factor	Date Analyzed	Analyst
<b>Trace Elements by ICP/MS E200.8</b>					<b>(E200.2)</b>			
Lead	BRL	1.00		ug/L	237230	1	01/31/2017 20:11	JR

**Qualifiers:**

- \* Value exceeds maximum contaminant level
- BRL Below reporting limit
- H Holding times for preparation or analysis exceeded
- N Analyte not NELAC certified
- B Analyte detected in the associated method blank
- > Greater than Result value

- E Estimated (value above quantitation range)
- S Spike Recovery outside limits due to matrix
- Narr See case narrative
- NC Not confirmed
- < Less than Result value
- J Estimated value detected below Reporting Limit

**Analytical Environmental Services, Inc**

**Date:** 8-Feb-17

<b>Client:</b> Atlanta Environmental Mgmt	<b>Client Sample ID:</b> 0101-012517-DF-015-A
<b>Project Name:</b> DCSD - 0101	<b>Collection Date:</b> 1/25/2017 5:41:00 AM
<b>Lab ID:</b> 1701K49-023	<b>Matrix:</b> Drinking Water

Analyses	Result	Reporting Limit	Qual	Units	BatchID	Dilution Factor	Date Analyzed	Analyst
<b>Trace Elements by ICP/MS E200.8</b>					<b>(E200.2)</b>			
Lead	BRL	1.00		ug/L	237230	1	01/31/2017 20:17	JR

**Qualifiers:**

- \* Value exceeds maximum contaminant level
- BRL Below reporting limit
- H Holding times for preparation or analysis exceeded
- N Analyte not NELAC certified
- B Analyte detected in the associated method blank
- > Greater than Result value

- E Estimated (value above quantitation range)
- S Spike Recovery outside limits due to matrix
- Narr See case narrative
- NC Not confirmed
- < Less than Result value
- J Estimated value detected below Reporting Limit

**Analytical Environmental Services, Inc**

**Date:** 8-Feb-17

<b>Client:</b> Atlanta Environmental Mgmt	<b>Client Sample ID:</b> 0101-012517-DF-015-B
<b>Project Name:</b> DCSD - 0101	<b>Collection Date:</b> 1/25/2017 5:42:00 AM
<b>Lab ID:</b> 1701K49-024	<b>Matrix:</b> Drinking Water

Analyses	Result	Reporting Limit	Qual	Units	BatchID	Dilution Factor	Date Analyzed	Analyst
<b>Trace Elements by ICP/MS E200.8</b>					<b>(E200.2)</b>			
Lead	BRL	1.00		ug/L	237230	1	01/31/2017 20:24	JR

**Qualifiers:**

- \* Value exceeds maximum contaminant level
- BRL Below reporting limit
- H Holding times for preparation or analysis exceeded
- N Analyte not NELAC certified
- B Analyte detected in the associated method blank
- > Greater than Result value

- E Estimated (value above quantitation range)
- S Spike Recovery outside limits due to matrix
- Narr See case narrative
- NC Not confirmed
- < Less than Result value
- J Estimated value detected below Reporting Limit

**Analytical Environmental Services, Inc**

**Date:** 8-Feb-17

<b>Client:</b> Atlanta Environmental Mgmt	<b>Client Sample ID:</b> 0101-012517-DF-015-C
<b>Project Name:</b> DCSD - 0101	<b>Collection Date:</b> 1/25/2017 5:43:00 AM
<b>Lab ID:</b> 1701K49-025	<b>Matrix:</b> Drinking Water

Analyses	Result	Reporting Limit	Qual	Units	BatchID	Dilution Factor	Date Analyzed	Analyst
<b>Trace Elements by ICP/MS E200.8</b>					<b>(E200.2)</b>			
Lead	BRL	1.00		ug/L	237230	1	01/31/2017 20:30	JR

**Qualifiers:**

- \* Value exceeds maximum contaminant level
- BRL Below reporting limit
- H Holding times for preparation or analysis exceeded
- N Analyte not NELAC certified
- B Analyte detected in the associated method blank
- > Greater than Result value

- E Estimated (value above quantitation range)
- S Spike Recovery outside limits due to matrix
- Narr See case narrative
- NC Not confirmed
- < Less than Result value
- J Estimated value detected below Reporting Limit

**Analytical Environmental Services, Inc**

**Date:** 8-Feb-17

<b>Client:</b> Atlanta Environmental Mgmt	<b>Client Sample ID:</b> 0101-012517-DF-020-A
<b>Project Name:</b> DCSD - 0101	<b>Collection Date:</b> 1/25/2017 5:03:00 AM
<b>Lab ID:</b> 1701K49-026	<b>Matrix:</b> Drinking Water

Analyses	Result	Reporting Limit	Qual	Units	BatchID	Dilution Factor	Date Analyzed	Analyst
<b>Trace Elements by ICP/MS E200.8</b>					<b>(E200.2)</b>			
Lead	BRL	1.00		ug/L	237230	1	01/31/2017 20:49	JR

**Qualifiers:**

- \* Value exceeds maximum contaminant level
- BRL Below reporting limit
- H Holding times for preparation or analysis exceeded
- N Analyte not NELAC certified
- B Analyte detected in the associated method blank
- > Greater than Result value

- E Estimated (value above quantitation range)
- S Spike Recovery outside limits due to matrix
- Narr See case narrative
- NC Not confirmed
- < Less than Result value
- J Estimated value detected below Reporting Limit



**Analytical Environmental Services, Inc**

**Date:** 8-Feb-17

<b>Client:</b> Atlanta Environmental Mgmt	<b>Client Sample ID:</b> 0101-012517-DF-020-B
<b>Project Name:</b> DCSD - 0101	<b>Collection Date:</b> 1/25/2017 5:04:00 AM
<b>Lab ID:</b> 1701K49-027	<b>Matrix:</b> Drinking Water

Analyses	Result	Reporting Limit	Qual	Units	BatchID	Dilution Factor	Date Analyzed	Analyst
<b>Trace Elements by ICP/MS E200.8</b>					<b>(E200.2)</b>			
Lead	BRL	1.00		ug/L	237230	1	01/31/2017 20:55	JR

**Qualifiers:**

- \* Value exceeds maximum contaminant level
- BRL Below reporting limit
- H Holding times for preparation or analysis exceeded
- N Analyte not NELAC certified
- B Analyte detected in the associated method blank
- > Greater than Result value

- E Estimated (value above quantitation range)
- S Spike Recovery outside limits due to matrix
- Narr See case narrative
- NC Not confirmed
- < Less than Result value
- J Estimated value detected below Reporting Limit

**Analytical Environmental Services, Inc**

**Date:** 8-Feb-17

<b>Client:</b> Atlanta Environmental Mgmt	<b>Client Sample ID:</b> 0101-012517-DF-021-A
<b>Project Name:</b> DCSD - 0101	<b>Collection Date:</b> 1/25/2017 5:05:00 AM
<b>Lab ID:</b> 1701K49-028	<b>Matrix:</b> Drinking Water

Analyses	Result	Reporting Limit	Qual	Units	BatchID	Dilution Factor	Date Analyzed	Analyst
<b>Trace Elements by ICP/MS E200.8</b>					<b>(E200.2)</b>			
Lead	BRL	1.00		ug/L	237230	1	01/31/2017 21:02	JR

**Qualifiers:**

- \* Value exceeds maximum contaminant level
- BRL Below reporting limit
- H Holding times for preparation or analysis exceeded
- N Analyte not NELAC certified
- B Analyte detected in the associated method blank
- > Greater than Result value

- E Estimated (value above quantitation range)
- S Spike Recovery outside limits due to matrix
- Narr See case narrative
- NC Not confirmed
- < Less than Result value
- J Estimated value detected below Reporting Limit

**Analytical Environmental Services, Inc**

**Date:** 8-Feb-17

<b>Client:</b> Atlanta Environmental Mgmt	<b>Client Sample ID:</b> 0101-012517-DF-021-B
<b>Project Name:</b> DCSD - 0101	<b>Collection Date:</b> 1/25/2017 5:06:00 AM
<b>Lab ID:</b> 1701K49-029	<b>Matrix:</b> Drinking Water

Analyses	Result	Reporting Limit	Qual	Units	BatchID	Dilution Factor	Date Analyzed	Analyst
<b>Trace Elements by ICP/MS E200.8</b>					<b>(E200.2)</b>			
Lead	BRL	1.00		ug/L	237230	1	01/31/2017 21:08	JR

**Qualifiers:**

- \* Value exceeds maximum contaminant level
- BRL Below reporting limit
- H Holding times for preparation or analysis exceeded
- N Analyte not NELAC certified
- B Analyte detected in the associated method blank
- > Greater than Result value

- E Estimated (value above quantitation range)
- S Spike Recovery outside limits due to matrix
- Narr See case narrative
- NC Not confirmed
- < Less than Result value
- J Estimated value detected below Reporting Limit

**Analytical Environmental Services, Inc**

**Date:** 8-Feb-17

<b>Client:</b> Atlanta Environmental Mgmt	<b>Client Sample ID:</b> 0101-012517-DF-022-A
<b>Project Name:</b> DCSD - 0101	<b>Collection Date:</b> 1/25/2017 5:27:00 AM
<b>Lab ID:</b> 1701K49-030	<b>Matrix:</b> Drinking Water

Analyses	Result	Reporting Limit	Qual	Units	BatchID	Dilution Factor	Date Analyzed	Analyst
<b>Trace Elements by ICP/MS E200.8</b>					<b>(E200.2)</b>			
Lead	BRL	1.00		ug/L	237230	1	01/31/2017 21:14	JR

**Qualifiers:**

- \* Value exceeds maximum contaminant level
- BRL Below reporting limit
- H Holding times for preparation or analysis exceeded
- N Analyte not NELAC certified
- B Analyte detected in the associated method blank
- > Greater than Result value

- E Estimated (value above quantitation range)
- S Spike Recovery outside limits due to matrix
- Narr See case narrative
- NC Not confirmed
- < Less than Result value
- J Estimated value detected below Reporting Limit

**Analytical Environmental Services, Inc**

**Date:** 8-Feb-17

<b>Client:</b> Atlanta Environmental Mgmt	<b>Client Sample ID:</b> 0101-012517-DF-022-B
<b>Project Name:</b> DCSD - 0101	<b>Collection Date:</b> 1/25/2017 5:28:00 AM
<b>Lab ID:</b> 1701K49-031	<b>Matrix:</b> Drinking Water

Analyses	Result	Reporting Limit	Qual	Units	BatchID	Dilution Factor	Date Analyzed	Analyst
<b>Trace Elements by ICP/MS E200.8</b>					<b>(E200.2)</b>			
Lead	BRL	1.00		ug/L	237230	1	01/31/2017 19:58	JR

**Qualifiers:**

- \* Value exceeds maximum contaminant level
- BRL Below reporting limit
- H Holding times for preparation or analysis exceeded
- N Analyte not NELAC certified
- B Analyte detected in the associated method blank
- > Greater than Result value

- E Estimated (value above quantitation range)
- S Spike Recovery outside limits due to matrix
- Narr See case narrative
- NC Not confirmed
- < Less than Result value
- J Estimated value detected below Reporting Limit

**Analytical Environmental Services, Inc**

**Date:** 8-Feb-17

<b>Client:</b> Atlanta Environmental Mgmt	<b>Client Sample ID:</b> 0101-012517-RS-001-A
<b>Project Name:</b> DCSD - 0101	<b>Collection Date:</b> 1/25/2017 5:10:00 AM
<b>Lab ID:</b> 1701K49-032	<b>Matrix:</b> Drinking Water

Analyses	Result	Reporting Limit	Qual	Units	BatchID	Dilution Factor	Date Analyzed	Analyst
<b>Trace Elements by ICP/MS E200.8</b>					<b>(E200.2)</b>			
Lead	BRL	1.00		ug/L	237230	1	01/31/2017 21:21	JR

**Qualifiers:**

- \* Value exceeds maximum contaminant level
- BRL Below reporting limit
- H Holding times for preparation or analysis exceeded
- N Analyte not NELAC certified
- B Analyte detected in the associated method blank
- > Greater than Result value

- E Estimated (value above quantitation range)
- S Spike Recovery outside limits due to matrix
- Narr See case narrative
- NC Not confirmed
- < Less than Result value
- J Estimated value detected below Reporting Limit

**Analytical Environmental Services, Inc**

**Date:** 8-Feb-17

<b>Client:</b> Atlanta Environmental Mgmt	<b>Client Sample ID:</b> 0101-012517-RS-001-B
<b>Project Name:</b> DCSD - 0101	<b>Collection Date:</b> 1/25/2017 5:11:00 AM
<b>Lab ID:</b> 1701K49-033	<b>Matrix:</b> Drinking Water

Analyses	Result	Reporting Limit	Qual	Units	BatchID	Dilution Factor	Date Analyzed	Analyst
<b>Trace Elements by ICP/MS E200.8</b>					<b>(E200.2)</b>			
Lead	BRL	1.00		ug/L	237230	1	01/31/2017 21:27	JR

**Qualifiers:**

- \* Value exceeds maximum contaminant level
- BRL Below reporting limit
- H Holding times for preparation or analysis exceeded
- N Analyte not NELAC certified
- B Analyte detected in the associated method blank
- > Greater than Result value

- E Estimated (value above quantitation range)
- S Spike Recovery outside limits due to matrix
- Narr See case narrative
- NC Not confirmed
- < Less than Result value
- J Estimated value detected below Reporting Limit

**Analytical Environmental Services, Inc**

**Date:** 8-Feb-17

<b>Client:</b> Atlanta Environmental Mgmt	<b>Client Sample ID:</b> 0101-012517-RS-002-A
<b>Project Name:</b> DCSD - 0101	<b>Collection Date:</b> 1/25/2017 5:38:00 AM
<b>Lab ID:</b> 1701K49-034	<b>Matrix:</b> Drinking Water

Analyses	Result	Reporting Limit	Qual	Units	BatchID	Dilution Factor	Date Analyzed	Analyst
<b>Trace Elements by ICP/MS E200.8</b>					<b>(E200.2)</b>			
Lead	BRL	1.00		ug/L	237230	1	01/31/2017 21:33	JR

**Qualifiers:**

- \* Value exceeds maximum contaminant level
- BRL Below reporting limit
- H Holding times for preparation or analysis exceeded
- N Analyte not NELAC certified
- B Analyte detected in the associated method blank
- > Greater than Result value

- E Estimated (value above quantitation range)
- S Spike Recovery outside limits due to matrix
- Narr See case narrative
- NC Not confirmed
- < Less than Result value
- J Estimated value detected below Reporting Limit



**Analytical Environmental Services, Inc**

**Date:** 8-Feb-17

<b>Client:</b> Atlanta Environmental Mgmt	<b>Client Sample ID:</b> 0101-012517-RS-002-B
<b>Project Name:</b> DCSD - 0101	<b>Collection Date:</b> 1/25/2017 5:39:00 AM
<b>Lab ID:</b> 1701K49-035	<b>Matrix:</b> Drinking Water

Analyses	Result	Reporting Limit	Qual	Units	BatchID	Dilution Factor	Date Analyzed	Analyst
<b>Trace Elements by ICP/MS E200.8</b>					<b>(E200.2)</b>			
Lead	1.77	1.00		ug/L	237230	1	01/31/2017 21:40	JR

**Qualifiers:**

- \* Value exceeds maximum contaminant level
- BRL Below reporting limit
- H Holding times for preparation or analysis exceeded
- N Analyte not NELAC certified
- B Analyte detected in the associated method blank
- > Greater than Result value

- E Estimated (value above quantitation range)
- S Spike Recovery outside limits due to matrix
- Narr See case narrative
- NC Not confirmed
- < Less than Result value
- J Estimated value detected below Reporting Limit

**Analytical Environmental Services, Inc**

**Date:** 8-Feb-17

<b>Client:</b> Atlanta Environmental Mgmt	<b>Client Sample ID:</b> 0101-012517-CS-001-A
<b>Project Name:</b> DCSD - 0101	<b>Collection Date:</b> 1/25/2017 5:04:00 AM
<b>Lab ID:</b> 1701K49-036	<b>Matrix:</b> Drinking Water

Analyses	Result	Reporting Limit	Qual	Units	BatchID	Dilution Factor	Date Analyzed	Analyst
<b>Trace Elements by ICP/MS E200.8</b>					<b>(E200.2)</b>			
Lead	2.07	1.00		ug/L	237230	1	01/31/2017 21:46	JR

**Qualifiers:**

- \* Value exceeds maximum contaminant level
- BRL Below reporting limit
- H Holding times for preparation or analysis exceeded
- N Analyte not NELAC certified
- B Analyte detected in the associated method blank
- > Greater than Result value

- E Estimated (value above quantitation range)
- S Spike Recovery outside limits due to matrix
- Narr See case narrative
- NC Not confirmed
- < Less than Result value
- J Estimated value detected below Reporting Limit

**Analytical Environmental Services, Inc**

**Date:** 8-Feb-17

<b>Client:</b> Atlanta Environmental Mgmt	<b>Client Sample ID:</b> 0101-012517-CS-001-B
<b>Project Name:</b> DCSD - 0101	<b>Collection Date:</b> 1/25/2017 5:05:00 AM
<b>Lab ID:</b> 1701K49-037	<b>Matrix:</b> Drinking Water

Analyses	Result	Reporting Limit	Qual	Units	BatchID	Dilution Factor	Date Analyzed	Analyst
<b>Trace Elements by ICP/MS E200.8</b>					<b>(E200.2)</b>			
Lead	BRL	1.00		ug/L	237230	1	01/31/2017 22:05	JR

**Qualifiers:**

- \* Value exceeds maximum contaminant level
- BRL Below reporting limit
- H Holding times for preparation or analysis exceeded
- N Analyte not NELAC certified
- B Analyte detected in the associated method blank
- > Greater than Result value

- E Estimated (value above quantitation range)
- S Spike Recovery outside limits due to matrix
- Narr See case narrative
- NC Not confirmed
- < Less than Result value
- J Estimated value detected below Reporting Limit

**Analytical Environmental Services, Inc**

**Date:** 8-Feb-17

<b>Client:</b> Atlanta Environmental Mgmt	<b>Client Sample ID:</b> 0101-012517-DF-028-A
<b>Project Name:</b> DCSD - 0101	<b>Collection Date:</b> 1/25/2017 5:01:00 AM
<b>Lab ID:</b> 1701K49-038	<b>Matrix:</b> Drinking Water

Analyses	Result	Reporting Limit	Qual	Units	BatchID	Dilution Factor	Date Analyzed	Analyst
<b>Trace Elements by ICP/MS E200.8</b>					<b>(E200.2)</b>			
Lead	BRL	1.00		ug/L	237230	1	01/31/2017 22:11	JR

**Qualifiers:**

- \* Value exceeds maximum contaminant level
- BRL Below reporting limit
- H Holding times for preparation or analysis exceeded
- N Analyte not NELAC certified
- B Analyte detected in the associated method blank
- > Greater than Result value

- E Estimated (value above quantitation range)
- S Spike Recovery outside limits due to matrix
- Narr See case narrative
- NC Not confirmed
- < Less than Result value
- J Estimated value detected below Reporting Limit

**Analytical Environmental Services, Inc**

**Date:** 8-Feb-17

<b>Client:</b> Atlanta Environmental Mgmt	<b>Client Sample ID:</b> 0101-012517-DF-028-B
<b>Project Name:</b> DCSD - 0101	<b>Collection Date:</b> 1/25/2017 5:02:00 AM
<b>Lab ID:</b> 1701K49-039	<b>Matrix:</b> Drinking Water

Analyses	Result	Reporting Limit	Qual	Units	BatchID	Dilution Factor	Date Analyzed	Analyst
<b>Trace Elements by ICP/MS E200.8</b>					<b>(E200.2)</b>			
Lead	BRL	1.00		ug/L	237230	1	01/31/2017 22:18	JR

**Qualifiers:**

- \* Value exceeds maximum contaminant level
- BRL Below reporting limit
- H Holding times for preparation or analysis exceeded
- N Analyte not NELAC certified
- B Analyte detected in the associated method blank
- > Greater than Result value

- E Estimated (value above quantitation range)
- S Spike Recovery outside limits due to matrix
- Narr See case narrative
- NC Not confirmed
- < Less than Result value
- J Estimated value detected below Reporting Limit

**Analytical Environmental Services, Inc**

**Date:** 8-Feb-17

<b>Client:</b> Atlanta Environmental Mgmt	<b>Client Sample ID:</b> 0101-012517-DF-029-A
<b>Project Name:</b> DCSD - 0101	<b>Collection Date:</b> 1/25/2017 5:03:00 AM
<b>Lab ID:</b> 1701K49-040	<b>Matrix:</b> Drinking Water

Analyses	Result	Reporting Limit	Qual	Units	BatchID	Dilution Factor	Date Analyzed	Analyst
<b>Trace Elements by ICP/MS E200.8</b>					<b>(E200.2)</b>			
Lead	BRL	1.00		ug/L	237230	1	01/31/2017 22:24	JR

**Qualifiers:**

- \* Value exceeds maximum contaminant level
- BRL Below reporting limit
- H Holding times for preparation or analysis exceeded
- N Analyte not NELAC certified
- B Analyte detected in the associated method blank
- > Greater than Result value

- E Estimated (value above quantitation range)
- S Spike Recovery outside limits due to matrix
- Narr See case narrative
- NC Not confirmed
- < Less than Result value
- J Estimated value detected below Reporting Limit

**Analytical Environmental Services, Inc**

**Date:** 8-Feb-17

<b>Client:</b> Atlanta Environmental Mgmt	<b>Client Sample ID:</b> 0101-012517-DF-029-B
<b>Project Name:</b> DCSD - 0101	<b>Collection Date:</b> 1/25/2017 5:04:00 AM
<b>Lab ID:</b> 1701K49-041	<b>Matrix:</b> Drinking Water

Analyses	Result	Reporting Limit	Qual	Units	BatchID	Dilution Factor	Date Analyzed	Analyst
<b>Trace Elements by ICP/MS E200.8</b>					<b>(E200.2)</b>			
Lead	BRL	1.00		ug/L	237231	1	01/31/2017 22:43	JR

**Qualifiers:**

- \* Value exceeds maximum contaminant level
- BRL Below reporting limit
- H Holding times for preparation or analysis exceeded
- N Analyte not NELAC certified
- B Analyte detected in the associated method blank
- > Greater than Result value

- E Estimated (value above quantitation range)
- S Spike Recovery outside limits due to matrix
- Narr See case narrative
- NC Not confirmed
- < Less than Result value
- J Estimated value detected below Reporting Limit

**Analytical Environmental Services, Inc**

**Date:** 8-Feb-17

<b>Client:</b> Atlanta Environmental Mgmt	<b>Client Sample ID:</b> 0101-012517-DF-023-A
<b>Project Name:</b> DCSD - 0101	<b>Collection Date:</b> 1/25/2017 5:29:00 AM
<b>Lab ID:</b> 1701K49-042	<b>Matrix:</b> Drinking Water

Analyses	Result	Reporting Limit	Qual	Units	BatchID	Dilution Factor	Date Analyzed	Analyst
<b>Trace Elements by ICP/MS E200.8</b>					<b>(E200.2)</b>			
Lead	BRL	1.00		ug/L	237231	1	01/31/2017 23:27	JR

**Qualifiers:**

- \* Value exceeds maximum contaminant level
- BRL Below reporting limit
- H Holding times for preparation or analysis exceeded
- N Analyte not NELAC certified
- B Analyte detected in the associated method blank
- > Greater than Result value

- E Estimated (value above quantitation range)
- S Spike Recovery outside limits due to matrix
- Narr See case narrative
- NC Not confirmed
- < Less than Result value
- J Estimated value detected below Reporting Limit



**Analytical Environmental Services, Inc**

**Date:** 8-Feb-17

<b>Client:</b> Atlanta Environmental Mgmt	<b>Client Sample ID:</b> 0101-012517-DF-023-B
<b>Project Name:</b> DCSD - 0101	<b>Collection Date:</b> 1/25/2017 5:30:00 AM
<b>Lab ID:</b> 1701K49-043	<b>Matrix:</b> Drinking Water

Analyses	Result	Reporting Limit	Qual	Units	BatchID	Dilution Factor	Date Analyzed	Analyst
<b>Trace Elements by ICP/MS E200.8</b>					<b>(E200.2)</b>			
Lead	BRL	1.00		ug/L	237231	1	01/31/2017 23:34	JR

**Qualifiers:**

- \* Value exceeds maximum contaminant level
- BRL Below reporting limit
- H Holding times for preparation or analysis exceeded
- N Analyte not NELAC certified
- B Analyte detected in the associated method blank
- > Greater than Result value

- E Estimated (value above quantitation range)
- S Spike Recovery outside limits due to matrix
- Narr See case narrative
- NC Not confirmed
- < Less than Result value
- J Estimated value detected below Reporting Limit

**Analytical Environmental Services, Inc**

**Date:** 8-Feb-17

<b>Client:</b> Atlanta Environmental Mgmt	<b>Client Sample ID:</b> 0101-012517-DF-024-A
<b>Project Name:</b> DCSD - 0101	<b>Collection Date:</b> 1/25/2017 5:33:00 AM
<b>Lab ID:</b> 1701K49-044	<b>Matrix:</b> Drinking Water

Analyses	Result	Reporting Limit	Qual	Units	BatchID	Dilution Factor	Date Analyzed	Analyst
<b>Trace Elements by ICP/MS E200.8</b>					<b>(E200.2)</b>			
Lead	BRL	1.00		ug/L	237231	1	01/31/2017 23:40	JR

**Qualifiers:**

- \* Value exceeds maximum contaminant level
- BRL Below reporting limit
- H Holding times for preparation or analysis exceeded
- N Analyte not NELAC certified
- B Analyte detected in the associated method blank
- > Greater than Result value

- E Estimated (value above quantitation range)
- S Spike Recovery outside limits due to matrix
- Narr See case narrative
- NC Not confirmed
- < Less than Result value
- J Estimated value detected below Reporting Limit

**Analytical Environmental Services, Inc**

**Date:** 8-Feb-17

<b>Client:</b> Atlanta Environmental Mgmt	<b>Client Sample ID:</b> 0101-012517-DF-024-B
<b>Project Name:</b> DCSD - 0101	<b>Collection Date:</b> 1/25/2017 5:34:00 AM
<b>Lab ID:</b> 1701K49-045	<b>Matrix:</b> Drinking Water

Analyses	Result	Reporting Limit	Qual	Units	BatchID	Dilution Factor	Date Analyzed	Analyst
<b>Trace Elements by ICP/MS E200.8</b>					<b>(E200.2)</b>			
Lead	BRL	1.00		ug/L	237231	1	01/31/2017 23:46	JR

**Qualifiers:**

- \* Value exceeds maximum contaminant level
- BRL Below reporting limit
- H Holding times for preparation or analysis exceeded
- N Analyte not NELAC certified
- B Analyte detected in the associated method blank
- > Greater than Result value

- E Estimated (value above quantitation range)
- S Spike Recovery outside limits due to matrix
- Narr See case narrative
- NC Not confirmed
- < Less than Result value
- J Estimated value detected below Reporting Limit

**Analytical Environmental Services, Inc**

**Date:** 8-Feb-17

<b>Client:</b> Atlanta Environmental Mgmt	<b>Client Sample ID:</b> 0101-012517-DF-025-A
<b>Project Name:</b> DCSD - 0101	<b>Collection Date:</b> 1/25/2017 5:35:00 AM
<b>Lab ID:</b> 1701K49-046	<b>Matrix:</b> Drinking Water

Analyses	Result	Reporting Limit	Qual	Units	BatchID	Dilution Factor	Date Analyzed	Analyst
<b>Trace Elements by ICP/MS E200.8</b>					<b>(E200.2)</b>			
Lead	BRL	1.00		ug/L	237231	1	01/31/2017 23:53	JR

**Qualifiers:**

- \* Value exceeds maximum contaminant level
- BRL Below reporting limit
- H Holding times for preparation or analysis exceeded
- N Analyte not NELAC certified
- B Analyte detected in the associated method blank
- > Greater than Result value

- E Estimated (value above quantitation range)
- S Spike Recovery outside limits due to matrix
- Narr See case narrative
- NC Not confirmed
- < Less than Result value
- J Estimated value detected below Reporting Limit

**Analytical Environmental Services, Inc**

**Date:** 8-Feb-17

<b>Client:</b> Atlanta Environmental Mgmt	<b>Client Sample ID:</b> 0101-012517-DF-025-B
<b>Project Name:</b> DCSD - 0101	<b>Collection Date:</b> 1/25/2017 5:36:00 AM
<b>Lab ID:</b> 1701K49-047	<b>Matrix:</b> Drinking Water

Analyses	Result	Reporting Limit	Qual	Units	BatchID	Dilution Factor	Date Analyzed	Analyst
<b>Trace Elements by ICP/MS E200.8</b>					<b>(E200.2)</b>			
Lead	BRL	1.00		ug/L	237231	1	01/31/2017 23:59	JR

**Qualifiers:**

- \* Value exceeds maximum contaminant level
- BRL Below reporting limit
- H Holding times for preparation or analysis exceeded
- N Analyte not NELAC certified
- B Analyte detected in the associated method blank
- > Greater than Result value

- E Estimated (value above quantitation range)
- S Spike Recovery outside limits due to matrix
- Narr See case narrative
- NC Not confirmed
- < Less than Result value
- J Estimated value detected below Reporting Limit

**Analytical Environmental Services, Inc**

**Date:** 8-Feb-17

<b>Client:</b> Atlanta Environmental Mgmt	<b>Client Sample ID:</b> 0101-012517-DF-026-A
<b>Project Name:</b> DCSD - 0101	<b>Collection Date:</b> 1/25/2017 5:21:00 AM
<b>Lab ID:</b> 1701K49-048	<b>Matrix:</b> Drinking Water

Analyses	Result	Reporting Limit	Qual	Units	BatchID	Dilution Factor	Date Analyzed	Analyst
<b>Trace Elements by ICP/MS E200.8</b>					<b>(E200.2)</b>			
Lead	BRL	1.00		ug/L	237231	1	02/01/2017 17:43	JR

**Qualifiers:**

- \* Value exceeds maximum contaminant level
- BRL Below reporting limit
- H Holding times for preparation or analysis exceeded
- N Analyte not NELAC certified
- B Analyte detected in the associated method blank
- > Greater than Result value

- E Estimated (value above quantitation range)
- S Spike Recovery outside limits due to matrix
- Narr See case narrative
- NC Not confirmed
- < Less than Result value
- J Estimated value detected below Reporting Limit

**Analytical Environmental Services, Inc**

**Date:** 8-Feb-17

<b>Client:</b> Atlanta Environmental Mgmt	<b>Client Sample ID:</b> 0101-012517-DF-026-B
<b>Project Name:</b> DCSD - 0101	<b>Collection Date:</b> 1/25/2017 5:22:00 AM
<b>Lab ID:</b> 1701K49-049	<b>Matrix:</b> Drinking Water

Analyses	Result	Reporting Limit	Qual	Units	BatchID	Dilution Factor	Date Analyzed	Analyst
<b>Trace Elements by ICP/MS E200.8</b>					<b>(E200.2)</b>			
Lead	BRL	1.00		ug/L	237231	1	02/01/2017 00:12	JR

**Qualifiers:**

- \* Value exceeds maximum contaminant level
- BRL Below reporting limit
- H Holding times for preparation or analysis exceeded
- N Analyte not NELAC certified
- B Analyte detected in the associated method blank
- > Greater than Result value

- E Estimated (value above quantitation range)
- S Spike Recovery outside limits due to matrix
- Narr See case narrative
- NC Not confirmed
- < Less than Result value
- J Estimated value detected below Reporting Limit

**Analytical Environmental Services, Inc**

**Date:** 8-Feb-17

<b>Client:</b> Atlanta Environmental Mgmt	<b>Client Sample ID:</b> 0101-012517-DF-027-B
<b>Project Name:</b> DCSD - 0101	<b>Collection Date:</b> 1/25/2017 5:39:00 AM
<b>Lab ID:</b> 1701K49-050	<b>Matrix:</b> Drinking Water

Analyses	Result	Reporting Limit	Qual	Units	BatchID	Dilution Factor	Date Analyzed	Analyst
<b>Trace Elements by ICP/MS E200.8</b>					<b>(E200.2)</b>			
Lead	BRL	1.00		ug/L	237231	1	02/01/2017 00:18	JR

**Qualifiers:**

- \* Value exceeds maximum contaminant level
- BRL Below reporting limit
- H Holding times for preparation or analysis exceeded
- N Analyte not NELAC certified
- B Analyte detected in the associated method blank
- > Greater than Result value

- E Estimated (value above quantitation range)
- S Spike Recovery outside limits due to matrix
- Narr See case narrative
- NC Not confirmed
- < Less than Result value
- J Estimated value detected below Reporting Limit



**Analytical Environmental Services, Inc**

**Date:** 8-Feb-17

<b>Client:</b> Atlanta Environmental Mgmt	<b>Client Sample ID:</b> 0101-012517-DF-027-A
<b>Project Name:</b> DCSD - 0101	<b>Collection Date:</b> 1/25/2017 5:40:00 AM
<b>Lab ID:</b> 1701K49-051	<b>Matrix:</b> Drinking Water

Analyses	Result	Reporting Limit	Qual	Units	BatchID	Dilution Factor	Date Analyzed	Analyst
<b>Trace Elements by ICP/MS E200.8</b>					<b>(E200.2)</b>			
Lead	BRL	1.00		ug/L	237231	1	01/31/2017 23:02	JR

**Qualifiers:**

- \* Value exceeds maximum contaminant level
- BRL Below reporting limit
- H Holding times for preparation or analysis exceeded
- N Analyte not NELAC certified
- B Analyte detected in the associated method blank
- > Greater than Result value

- E Estimated (value above quantitation range)
- S Spike Recovery outside limits due to matrix
- Narr See case narrative
- NC Not confirmed
- < Less than Result value
- J Estimated value detected below Reporting Limit

**Analytical Environmental Services, Inc**

**Date:** 8-Feb-17

<b>Client:</b> Atlanta Environmental Mgmt	<b>Client Sample ID:</b> 0101-012517-TL-001-A
<b>Project Name:</b> DCSD - 0101	<b>Collection Date:</b> 1/25/2017 5:36:00 AM
<b>Lab ID:</b> 1701K49-052	<b>Matrix:</b> Drinking Water

Analyses	Result	Reporting Limit	Qual	Units	BatchID	Dilution Factor	Date Analyzed	Analyst
<b>Trace Elements by ICP/MS E200.8</b>					<b>(E200.2)</b>			
Lead	BRL	1.00		ug/L	237231	1	02/01/2017 17:49	JR

**Qualifiers:**

- \* Value exceeds maximum contaminant level
- BRL Below reporting limit
- H Holding times for preparation or analysis exceeded
- N Analyte not NELAC certified
- B Analyte detected in the associated method blank
- > Greater than Result value

- E Estimated (value above quantitation range)
- S Spike Recovery outside limits due to matrix
- Narr See case narrative
- NC Not confirmed
- < Less than Result value
- J Estimated value detected below Reporting Limit

**Analytical Environmental Services, Inc**

**Date:** 8-Feb-17

<b>Client:</b> Atlanta Environmental Mgmt	<b>Client Sample ID:</b> 0101-012517-TL-001-B
<b>Project Name:</b> DCSD - 0101	<b>Collection Date:</b> 1/25/2017 5:37:00 AM
<b>Lab ID:</b> 1701K49-053	<b>Matrix:</b> Drinking Water

Analyses	Result	Reporting Limit	Qual	Units	BatchID	Dilution Factor	Date Analyzed	Analyst
<b>Trace Elements by ICP/MS E200.8</b>					<b>(E200.2)</b>			
Lead	BRL	1.00		ug/L	237231	1	02/01/2017 00:43	JR

**Qualifiers:**

- \* Value exceeds maximum contaminant level
- BRL Below reporting limit
- H Holding times for preparation or analysis exceeded
- N Analyte not NELAC certified
- B Analyte detected in the associated method blank
- > Greater than Result value

- E Estimated (value above quantitation range)
- S Spike Recovery outside limits due to matrix
- Narr See case narrative
- NC Not confirmed
- < Less than Result value
- J Estimated value detected below Reporting Limit

**Analytical Environmental Services, Inc**

**Date:** 8-Feb-17

<b>Client:</b> Atlanta Environmental Mgmt	<b>Client Sample ID:</b> 0101-012517-TL-002-A
<b>Project Name:</b> DCSD - 0101	<b>Collection Date:</b> 1/25/2017 5:15:00 AM
<b>Lab ID:</b> 1701K49-054	<b>Matrix:</b> Drinking Water

Analyses	Result	Reporting Limit	Qual	Units	BatchID	Dilution Factor	Date Analyzed	Analyst
<b>Trace Elements by ICP/MS E200.8</b>					<b>(E200.2)</b>			
Lead	BRL	1.00		ug/L	237231	1	02/01/2017 00:50	JR

**Qualifiers:**

- \* Value exceeds maximum contaminant level
- BRL Below reporting limit
- H Holding times for preparation or analysis exceeded
- N Analyte not NELAC certified
- B Analyte detected in the associated method blank
- > Greater than Result value

- E Estimated (value above quantitation range)
- S Spike Recovery outside limits due to matrix
- Narr See case narrative
- NC Not confirmed
- < Less than Result value
- J Estimated value detected below Reporting Limit

**Analytical Environmental Services, Inc**

**Date:** 8-Feb-17

<b>Client:</b> Atlanta Environmental Mgmt	<b>Client Sample ID:</b> 0101-012517-TL-002-B
<b>Project Name:</b> DCSD - 0101	<b>Collection Date:</b> 1/25/2017 5:17:00 AM
<b>Lab ID:</b> 1701K49-055	<b>Matrix:</b> Drinking Water

Analyses	Result	Reporting Limit	Qual	Units	BatchID	Dilution Factor	Date Analyzed	Analyst
<b>Trace Elements by ICP/MS E200.8</b>					<b>(E200.2)</b>			
Lead	BRL	1.00		ug/L	237231	1	02/01/2017 00:56	JR

**Qualifiers:**

- \* Value exceeds maximum contaminant level
- BRL Below reporting limit
- H Holding times for preparation or analysis exceeded
- N Analyte not NELAC certified
- B Analyte detected in the associated method blank
- > Greater than Result value

- E Estimated (value above quantitation range)
- S Spike Recovery outside limits due to matrix
- Narr See case narrative
- NC Not confirmed
- < Less than Result value
- J Estimated value detected below Reporting Limit

**Analytical Environmental Services, Inc**

**Date:** 8-Feb-17

<b>Client:</b> Atlanta Environmental Mgmt	<b>Client Sample ID:</b> 0101-012517-TL-002-C
<b>Project Name:</b> DCSD - 0101	<b>Collection Date:</b> 1/25/2017 5:16:00 AM
<b>Lab ID:</b> 1701K49-056	<b>Matrix:</b> Drinking Water

Analyses	Result	Reporting Limit	Qual	Units	BatchID	Dilution Factor	Date Analyzed	Analyst
<b>Trace Elements by ICP/MS E200.8</b>					<b>(E200.2)</b>			
Lead	BRL	1.00		ug/L	237231	1	02/01/2017 01:02	JR

**Qualifiers:**

- \* Value exceeds maximum contaminant level
- BRL Below reporting limit
- H Holding times for preparation or analysis exceeded
- N Analyte not NELAC certified
- B Analyte detected in the associated method blank
- > Greater than Result value

- E Estimated (value above quantitation range)
- S Spike Recovery outside limits due to matrix
- Narr See case narrative
- NC Not confirmed
- < Less than Result value
- J Estimated value detected below Reporting Limit

**Analytical Environmental Services, Inc**

**Date:** 8-Feb-17

<b>Client:</b> Atlanta Environmental Mgmt	<b>Client Sample ID:</b> 0101-012517-CS-002-A
<b>Project Name:</b> DCSD - 0101	<b>Collection Date:</b> 1/25/2017 5:08:00 AM
<b>Lab ID:</b> 1701K49-057	<b>Matrix:</b> Drinking Water

Analyses	Result	Reporting Limit	Qual	Units	BatchID	Dilution Factor	Date Analyzed	Analyst
<b>Trace Elements by ICP/MS E200.8</b>					<b>(E200.2)</b>			
Lead	BRL	1.00		ug/L	237231	1	02/01/2017 01:09	JR

**Qualifiers:**

- \* Value exceeds maximum contaminant level
- BRL Below reporting limit
- H Holding times for preparation or analysis exceeded
- N Analyte not NELAC certified
- B Analyte detected in the associated method blank
- > Greater than Result value

- E Estimated (value above quantitation range)
- S Spike Recovery outside limits due to matrix
- Narr See case narrative
- NC Not confirmed
- < Less than Result value
- J Estimated value detected below Reporting Limit

**Analytical Environmental Services, Inc**

**Date:** 8-Feb-17

<b>Client:</b> Atlanta Environmental Mgmt	<b>Client Sample ID:</b> 0101-012517-CS-002-B
<b>Project Name:</b> DCSD - 0101	<b>Collection Date:</b> 1/25/2017 5:09:00 AM
<b>Lab ID:</b> 1701K49-058	<b>Matrix:</b> Drinking Water

Analyses	Result	Reporting Limit	Qual	Units	BatchID	Dilution Factor	Date Analyzed	Analyst
<b>Trace Elements by ICP/MS E200.8</b>					<b>(E200.2)</b>			
Lead	BRL	1.00		ug/L	237231	1	02/01/2017 01:15	JR

**Qualifiers:**

- \* Value exceeds maximum contaminant level
- BRL Below reporting limit
- H Holding times for preparation or analysis exceeded
- N Analyte not NELAC certified
- B Analyte detected in the associated method blank
- > Greater than Result value

- E Estimated (value above quantitation range)
- S Spike Recovery outside limits due to matrix
- Narr See case narrative
- NC Not confirmed
- < Less than Result value
- J Estimated value detected below Reporting Limit



**Analytical Environmental Services, Inc**

**Date:** 8-Feb-17

<b>Client:</b> Atlanta Environmental Mgmt	<b>Client Sample ID:</b> 0101-012517-IM-001-A
<b>Project Name:</b> DCSD - 0101	<b>Collection Date:</b> 1/25/2017 5:06:00 AM
<b>Lab ID:</b> 1701K49-059	<b>Matrix:</b> Drinking Water

Analyses	Result	Reporting Limit	Qual	Units	BatchID	Dilution Factor	Date Analyzed	Analyst
<b>Trace Elements by ICP/MS E200.8</b>					<b>(E200.2)</b>			
Lead	BRL	1.00		ug/L	237231	1	02/01/2017 01:21	JR

**Qualifiers:**

- \* Value exceeds maximum contaminant level
- BRL Below reporting limit
- H Holding times for preparation or analysis exceeded
- N Analyte not NELAC certified
- B Analyte detected in the associated method blank
- > Greater than Result value

- E Estimated (value above quantitation range)
- S Spike Recovery outside limits due to matrix
- Narr See case narrative
- NC Not confirmed
- < Less than Result value
- J Estimated value detected below Reporting Limit

**Analytical Environmental Services, Inc**

**Date:** 8-Feb-17

<b>Client:</b> Atlanta Environmental Mgmt	<b>Client Sample ID:</b> 0101-012517-SC-001-A
<b>Project Name:</b> DCSD - 0101	<b>Collection Date:</b> 1/25/2017 4:58:00 AM
<b>Lab ID:</b> 1701K49-060	<b>Matrix:</b> Drinking Water

Analyses	Result	Reporting Limit	Qual	Units	BatchID	Dilution Factor	Date Analyzed	Analyst
<b>Trace Elements by ICP/MS E200.8</b>					<b>(E200.2)</b>			
Lead	BRL	1.00		ug/L	237231	1	02/01/2017 01:28	JR

**Qualifiers:**

- \* Value exceeds maximum contaminant level
- BRL Below reporting limit
- H Holding times for preparation or analysis exceeded
- N Analyte not NELAC certified
- B Analyte detected in the associated method blank
- > Greater than Result value

- E Estimated (value above quantitation range)
- S Spike Recovery outside limits due to matrix
- Narr See case narrative
- NC Not confirmed
- < Less than Result value
- J Estimated value detected below Reporting Limit

Analytical Environmental Services, Inc.

Sample/Cooler Receipt Checklist

Client AEM

Work Order Number 1701K49

Checklist completed by [Signature] Date 11/25/17

Carrier name: FedEx  UPS  Courier  Client  US Mail  Other

Shipping container/cooler in good condition? Yes  No  Not Present   
Custody seals intact on shipping container/cooler? Yes  No  Not Present   
Custody seals intact on sample bottles? Yes  No  Not Present   
Container/Temp Blank temperature in compliance? (0°≤6°C)\* Yes  No

Cooler #1 4.2° Cooler #2 \_\_\_\_\_ Cooler #3 \_\_\_\_\_ Cooler #4 \_\_\_\_\_ Cooler#5 \_\_\_\_\_ Cooler #6 \_\_\_\_\_

Chain of custody present? Yes  No   
Chain of custody signed when relinquished and received? Yes  No   
Chain of custody agrees with sample labels? Yes  No   
Samples in proper container/bottle? Yes  No   
Sample containers intact? Yes  No   
Sufficient sample volume for indicated test? Yes  No   
All samples received within holding time? Yes  No   
Was TAT marked on the COC? Yes  No   
Proceed with Standard TAT as per project history? Yes  No  Not Applicable   
Water - VOA vials have zero headspace? No VOA vials submitted  Yes  No   
Water - pH acceptable upon receipt? Yes  No  Not Applicable

Adjusted? \_\_\_\_\_ Checked by TD  
Sample Condition: Good  Other(Explain) \_\_\_\_\_  
(For diffusive samples or AIHA lead) Is a known blank included? Yes  No

See Case Narrative for resolution of the Non-Conformance.

\* Samples do not have to comply with the given range for certain parameters.

Client: Atlanta Environmental Mgmt  
 Project Name: DCSD - 0101  
 Workorder: 1701K49

**ANALYTICAL QC SUMMARY REPORT**

BatchID: 237230

Sample ID: <b>MB-237230</b>	Client ID:	Units: <b>ug/L</b>	Prep Date: <b>01/31/2017</b>	Run No: <b>335475</b>							
SampleType: <b>MBLK</b>	TestCode: <b>Trace Elements by ICP/MS E200.8</b>	BatchID: <b>237230</b>	Analysis Date: <b>01/31/2017</b>	Seq No: <b>7320344</b>							
Analyte	Result	RPT Limit	SPK value	SPK Ref Val	%REC	Low Limit	High Limit	RPD Ref Val	%RPD	RPD Limit	Qual

Lead BRL 1.00

Sample ID: <b>LCS-237230</b>	Client ID:	Units: <b>ug/L</b>	Prep Date: <b>01/31/2017</b>	Run No: <b>335475</b>							
SampleType: <b>LCS</b>	TestCode: <b>Trace Elements by ICP/MS E200.8</b>	BatchID: <b>237230</b>	Analysis Date: <b>01/31/2017</b>	Seq No: <b>7320347</b>							
Analyte	Result	RPT Limit	SPK value	SPK Ref Val	%REC	Low Limit	High Limit	RPD Ref Val	%RPD	RPD Limit	Qual

Lead 94.49 1.00 100.0 94.5 85 115

Sample ID: <b>1701K49-021AMS</b>	Client ID: <b>0101-012517-DF-014-A</b>	Units: <b>ug/L</b>	Prep Date: <b>01/31/2017</b>	Run No: <b>335475</b>							
SampleType: <b>MS</b>	TestCode: <b>Trace Elements by ICP/MS E200.8</b>	BatchID: <b>237230</b>	Analysis Date: <b>01/31/2017</b>	Seq No: <b>7320349</b>							
Analyte	Result	RPT Limit	SPK value	SPK Ref Val	%REC	Low Limit	High Limit	RPD Ref Val	%RPD	RPD Limit	Qual

Lead 93.18 1.00 100.0 0.06018 93.1 70 130

Sample ID: <b>1701K49-031AMS</b>	Client ID: <b>0101-012517-DF-022-B</b>	Units: <b>ug/L</b>	Prep Date: <b>01/31/2017</b>	Run No: <b>335475</b>							
SampleType: <b>MS</b>	TestCode: <b>Trace Elements by ICP/MS E200.8</b>	BatchID: <b>237230</b>	Analysis Date: <b>01/31/2017</b>	Seq No: <b>7320352</b>							
Analyte	Result	RPT Limit	SPK value	SPK Ref Val	%REC	Low Limit	High Limit	RPD Ref Val	%RPD	RPD Limit	Qual

Lead 91.92 1.00 100.0 0.07624 91.8 70 130

Sample ID: <b>1701K49-021AMSD</b>	Client ID: <b>0101-012517-DF-014-A</b>	Units: <b>ug/L</b>	Prep Date: <b>01/31/2017</b>	Run No: <b>335475</b>							
SampleType: <b>MSD</b>	TestCode: <b>Trace Elements by ICP/MS E200.8</b>	BatchID: <b>237230</b>	Analysis Date: <b>01/31/2017</b>	Seq No: <b>7320350</b>							
Analyte	Result	RPT Limit	SPK value	SPK Ref Val	%REC	Low Limit	High Limit	RPD Ref Val	%RPD	RPD Limit	Qual

Lead 93.66 1.00 100.0 0.06018 93.6 70 130 93.18 0.505 20

**Qualifiers:** > Greater than Result value < Less than Result value B Analyte detected in the associated method blank  
 BRL Below reporting limit E Estimated (value above quantitation range) H Holding times for preparation or analysis exceeded  
 J Estimated value detected below Reporting Limit N Analyte not NELAC certified R RPD outside limits due to matrix  
 Rpt Lim Reporting Limit S Spike Recovery outside limits due to matrix

**Client:** Atlanta Environmental Mgmt  
**Project Name:** DCSD - 0101  
**Workorder:** 1701K49

**ANALYTICAL QC SUMMARY REPORT**

**BatchID: 237231**

Sample ID: <b>MB-237231</b>	Client ID:	Units: <b>ug/L</b>	Prep Date: <b>01/31/2017</b>	Run No: <b>335476</b>							
SampleType: <b>MBLK</b>	TestCode: <b>Trace Elements by ICP/MS E200.8</b>	BatchID: <b>237231</b>	Analysis Date: <b>01/31/2017</b>	Seq No: <b>7320388</b>							
Analyte	Result	RPT Limit	SPK value	SPK Ref Val	%REC	Low Limit	High Limit	RPD Ref Val	%RPD	RPD Limit	Qual

Lead BRL 1.00

Sample ID: <b>LCS-237231</b>	Client ID:	Units: <b>ug/L</b>	Prep Date: <b>01/31/2017</b>	Run No: <b>335476</b>							
SampleType: <b>LCS</b>	TestCode: <b>Trace Elements by ICP/MS E200.8</b>	BatchID: <b>237231</b>	Analysis Date: <b>01/31/2017</b>	Seq No: <b>7320389</b>							
Analyte	Result	RPT Limit	SPK value	SPK Ref Val	%REC	Low Limit	High Limit	RPD Ref Val	%RPD	RPD Limit	Qual

Lead 94.20 1.00 100.0 94.2 85 115

Sample ID: <b>1701K49-041AMS</b>	Client ID: <b>0101-012517-DF-029-B</b>	Units: <b>ug/L</b>	Prep Date: <b>01/31/2017</b>	Run No: <b>335476</b>							
SampleType: <b>MS</b>	TestCode: <b>Trace Elements by ICP/MS E200.8</b>	BatchID: <b>237231</b>	Analysis Date: <b>01/31/2017</b>	Seq No: <b>7320391</b>							
Analyte	Result	RPT Limit	SPK value	SPK Ref Val	%REC	Low Limit	High Limit	RPD Ref Val	%RPD	RPD Limit	Qual

Lead 92.70 1.00 100.0 92.7 70 130

Sample ID: <b>1701K49-051AMS</b>	Client ID: <b>0101-012517-DF-027-A</b>	Units: <b>ug/L</b>	Prep Date: <b>01/31/2017</b>	Run No: <b>335476</b>							
SampleType: <b>MS</b>	TestCode: <b>Trace Elements by ICP/MS E200.8</b>	BatchID: <b>237231</b>	Analysis Date: <b>01/31/2017</b>	Seq No: <b>7320396</b>							
Analyte	Result	RPT Limit	SPK value	SPK Ref Val	%REC	Low Limit	High Limit	RPD Ref Val	%RPD	RPD Limit	Qual

Lead 91.44 1.00 100.0 0.06082 91.4 70 130

Sample ID: <b>1701K49-041AMSD</b>	Client ID: <b>0101-012517-DF-029-B</b>	Units: <b>ug/L</b>	Prep Date: <b>01/31/2017</b>	Run No: <b>335476</b>							
SampleType: <b>MSD</b>	TestCode: <b>Trace Elements by ICP/MS E200.8</b>	BatchID: <b>237231</b>	Analysis Date: <b>01/31/2017</b>	Seq No: <b>7320392</b>							
Analyte	Result	RPT Limit	SPK value	SPK Ref Val	%REC	Low Limit	High Limit	RPD Ref Val	%RPD	RPD Limit	Qual

Lead 93.87 1.00 100.0 93.9 70 130 92.70 1.25 20

**Qualifiers:** > Greater than Result value < Less than Result value B Analyte detected in the associated method blank  
 BRL Below reporting limit E Estimated (value above quantitation range) H Holding times for preparation or analysis exceeded  
 J Estimated value detected below Reporting Limit N Analyte not NELAC certified R RPD outside limits due to matrix  
 Rpt Lim Reporting Limit S Spike Recovery outside limits due to matrix

**Client:** Atlanta Environmental Mgmt  
**Project Name:** DCSD - 0101  
**Workorder:** 1701K49

**ANALYTICAL QC SUMMARY REPORT**

**BatchID: 237244**

Sample ID: <b>MB-237244</b>	Client ID:	Units: <b>ug/L</b>	Prep Date: <b>01/31/2017</b>	Run No: <b>335543</b>							
SampleType: <b>MBLK</b>	TestCode: <b>Trace Elements by ICP/MS E200.8</b>	BatchID: <b>237244</b>	Analysis Date: <b>02/01/2017</b>	Seq No: <b>7321729</b>							
Analyte	Result	RPT Limit	SPK value	SPK Ref Val	%REC	Low Limit	High Limit	RPD Ref Val	%RPD	RPD Limit	Qual

Lead BRL 1.00

Sample ID: <b>LCS-237244</b>	Client ID:	Units: <b>ug/L</b>	Prep Date: <b>01/31/2017</b>	Run No: <b>335543</b>							
SampleType: <b>LCS</b>	TestCode: <b>Trace Elements by ICP/MS E200.8</b>	BatchID: <b>237244</b>	Analysis Date: <b>02/01/2017</b>	Seq No: <b>7321730</b>							
Analyte	Result	RPT Limit	SPK value	SPK Ref Val	%REC	Low Limit	High Limit	RPD Ref Val	%RPD	RPD Limit	Qual

Lead 86.00 1.00 100.0 86.0 85 115

Sample ID: <b>1701K49-001AMS</b>	Client ID: <b>0101-012517-DF-002-A</b>	Units: <b>ug/L</b>	Prep Date: <b>01/31/2017</b>	Run No: <b>335543</b>							
SampleType: <b>MS</b>	TestCode: <b>Trace Elements by ICP/MS E200.8</b>	BatchID: <b>237244</b>	Analysis Date: <b>02/01/2017</b>	Seq No: <b>7321732</b>							
Analyte	Result	RPT Limit	SPK value	SPK Ref Val	%REC	Low Limit	High Limit	RPD Ref Val	%RPD	RPD Limit	Qual

Lead 84.46 1.00 100.0 0.2150 84.2 70 130

Sample ID: <b>1701K49-011AMS</b>	Client ID: <b>0101-012517-DF-009-A</b>	Units: <b>ug/L</b>	Prep Date: <b>01/31/2017</b>	Run No: <b>335543</b>							
SampleType: <b>MS</b>	TestCode: <b>Trace Elements by ICP/MS E200.8</b>	BatchID: <b>237244</b>	Analysis Date: <b>02/01/2017</b>	Seq No: <b>7321735</b>							
Analyte	Result	RPT Limit	SPK value	SPK Ref Val	%REC	Low Limit	High Limit	RPD Ref Val	%RPD	RPD Limit	Qual

Lead 88.49 1.00 100.0 0.1230 88.4 70 130

Sample ID: <b>1701K49-001AMSD</b>	Client ID: <b>0101-012517-DF-002-A</b>	Units: <b>ug/L</b>	Prep Date: <b>01/31/2017</b>	Run No: <b>335543</b>							
SampleType: <b>MSD</b>	TestCode: <b>Trace Elements by ICP/MS E200.8</b>	BatchID: <b>237244</b>	Analysis Date: <b>02/01/2017</b>	Seq No: <b>7321733</b>							
Analyte	Result	RPT Limit	SPK value	SPK Ref Val	%REC	Low Limit	High Limit	RPD Ref Val	%RPD	RPD Limit	Qual

Lead 90.39 1.00 100.0 0.2150 90.2 70 130 84.46 6.78 20

**Qualifiers:** > Greater than Result value < Less than Result value B Analyte detected in the associated method blank  
 BRL Below reporting limit E Estimated (value above quantitation range) H Holding times for preparation or analysis exceeded  
 J Estimated value detected below Reporting Limit N Analyte not NELAC certified R RPD outside limits due to matrix  
 Rpt Lim Reporting Limit S Spike Recovery outside limits due to matrix

## Leona Miles

---

**From:** NoReply@aesatlanta.net  
**Sent:** Tuesday, October 31, 2017 2:18 PM  
**To:** leona-miles@aem-net.com; tim-royer@aem-net.com  
**Subject:** DCSD - 0101  
**Attachments:** 1710G77\_REPORT.pdf; 1710G77Invoice.pdf

Please see attached. If you have any questions or need further assistance please contact your project manager at 770-457-8177.

AES Reporting System

ANALYTICAL ENVIRONMENTAL SERVICES, INC.  
3080 Presidential Drive ATLANTA, GA 30340  
Tel: 770-457-8177 Fax: 770-457-8188  
<http://www.aesatlanta.com>

NOTICE OF CONFIDENTIALITY: The information in this email and / or attachments may be legally privileged and is confidential information intended for the use of the individual or entity named in the email address. If the reader of this message is not the intended recipient, you are hereby notified that any use, dissemination, distribution, or copy of this email and / or attachments is strictly prohibited. If you have received this email in error, please notify Analytical Environmental Services Customer Service by telephone at (770) 457-8177 or by email at [info@aesatlanta.com](mailto:info@aesatlanta.com) <<mailto:info@aesatlanta.com>> and delete the message. Thank you



October 31, 2017

Leona Miles  
Atlanta Environmental Mgmt  
2580 NE Expressway  
Atlanta GA 30345

RE: DCSD - 0101

Dear Leona Miles:

Order No: 1710G77

Analytical Environmental Services, Inc. received 26 samples on 10/18/2017 8:15:00 AM for the analyses presented in following report.

No problems were encountered during the analyses. Additionally, all results for the associated Quality Control samples were within EPA and/or AES established limits. Any discrepancies associated with the analyses contained herein will be noted and submitted in the form of a project Case Narrative.

AES's accreditations are as follows:

-NELAP/State of Florida Laboratory ID E87582 for analysis of Non-Potable Water, Solid & Chemical Materials, Air & Emissions Volatile Organics, and Drinking Water Microbiology & Metals, effective 07/01/17-06/30/18.

State of Georgia, Department of Natural Resources ID #800 for analysis of Drinking Water Metals, effective 07/01/17-06/30/18 and Total Coliforms/ E. coli, effective 04/25/17-04/24/20.

-NELAP/Louisiana Agency Interest No. 100818 for or analysis of Non-Potable Water and Solid & Chemical Materials, effective 07/01/17-06/30/18.

-AIHA-LAP, LLC Laboratory ID: 100671 for Industrial Hygiene samples (Organics, Metals, PCM Asbestos, Gravimetric), Environmental Lead (Paint, Soil, Dust Wipes, Air), and Environmental Microbiology (Fungal) Direct Examination, effective until 11/01/17.

These results relate only to the items tested. This report may only be reproduced in full.

If you have any questions regarding these test results, please feel free to call.

Sincerely,

Ioana Pacurar  
Project Manager





**ANALYTICAL ENVIRONMENTAL SERVICES, INC**  
 3080 Presidential Drive, Atlanta GA 30340-3704  
 TEL.: (770) 457-8177 / TOLL-FREE (800) 972-4889 / FAX: (770) 457-8188

**CHAIN OF CUSTODY**

Work Order: 1710677

Date: 10/18/17 Page 1 of 2

COMPANY: <b>Atlanta Environmental Management Inc</b>		ADDRESS: <b>2580 Northeast Expressway NE Atlanta, GA 30345</b>			ANALYSIS REQUESTED								Visit our website <b>www.aesatlanta.com</b> to check on the status of your results, place bottle orders, etc.	No # of Containers	
PHONE: 404-329-9006		FAX: 404-329-2057			Lead (200.8)	PRESERVATION (See codes)									
SAMPLED BY: Leona Miles		SIGNATURE: <i>Leona Miles</i>													
#	SAMPLE ID	DATE	TIME	Grab	Composite	Matrix (See codes)	REMARKS								
1	0101-101817-CS-003-A	10/18/2017	0542	X		DW	X								
2	0101-101817-CS-003-B	10/18/2017	0543	X		DW	X								
3	0101-101817-CS-004-A	10/18/2017	0544	X		DW	X								
4	0101-101817-CS-004-B	10/18/2017	0545	X		DW	X								
5	0101-101817-CS-005-A	10/18/2017	0546	X		DW	X								
6	0101-101817-CS-005-B	10/18/2017	0547	X		DW	X								
7	0101-101817-CS-006-A	10/18/2017	0549	X		DW	X								
8	0101-101817-CS-006-B	10/18/2017	0550	X		DW	X								
9	0101-101817-CS-007-A	10/18/2017	0551	X		DW	X								
10	0101-101817-CS-007-B	10/18/2017	0552	X		DW	X								
11	0101-101817-DF-001-A	10/18/2017	0605	X		DW	X								
12	0101-101817-DF-001-B	10/18/2017	0606	X		DW	X								
13	0101-101817-DF-006-A	10/18/2017	0556	X		DW	X								
14	0101-101817-DF-006-B	10/18/2017	0557	X		DW	X								
15	0101-101817-DF-007-A	10/18/2017	0559	X		DW	X								
RELINQUISHED BY		DATE/TIME		RECEIVED BY		DATE/TIME		PROJECT INFORMATION					RECEIPT		
1: <i>Leona Miles</i>		10/18/17 0815		1: <i>Keegan</i>		10/18/17 0815		PROJECT NAME: <b>DCSD</b>					Total # of Containers		
2: <i>Keegan</i>		10/18/17 0836		2: <i>Tanya Deas</i>		10/18/17 0836		PROJECT #: <b>1561-1601</b>					Turnaround Time Request		
3: <i>Tanya Deas</i>		10/18/17 0836		3: <i>Tanya Deas</i>		10/18/17 0836		SITE ADDRESS: <b>0101</b>					<input type="radio"/> Standard 5 Business Days <input type="radio"/> 2 Business Day Rush <input type="radio"/> Next Business Day Rush <input type="radio"/> Same Day Rush (auth req.) <input checked="" type="radio"/> Other: 10 business Days		
SPECIAL INSTRUCTIONS/COMMENTS: <b>LAB TO PRESERVE</b>				SHIPMENT METHOD				INVOICE TO: Leona Miles (IF DIFFERENT FROM ABOVE)					STATE PROGRAM (if any): _____		
				OUT / / VIA: IN <u>  D  </u> VIA: CLIENT FedEx UPS MAIL COURIER GREYHOUND OTHER _____				SEND REPORT TO: <b>leona-miles@aem-net.com</b>					E-mail? Y/N; Fax? Y/N		
								QUOTE #: _____ PO#: _____					DATA PACKAGE: I II III IV		

SAMPLES RECEIVED AFTER 3PM OR SATURDAY ARE CONSIDERED AS RECEIVED ON THE NEXT BUSINESS DAY; IF NO TAT IS MARKED ON COC AES WILL PROCEED AS STANDARD TAT.  
 SAMPLES ARE DISPOSED OF 30 DAYS AFTER COMPLETION OF REPORT UNLESS OTHER ARRANGEMENTS ARE MADE.

MATRIX CODES: A = Air GW = Groundwater SE = Sediment SO = Soil SW = Surface Water DW = Drinking Water W = Water (Blanks) O = Other (specify)

PRESERVATIVE CODES: H+I = Hydrochloric acid + ice I = Ice only N = Nitric acid S+I = Sulfuric acid + ice S/M+I = Sodium Bisulfate/Methanol + ice O = Other (specify) NA = None



COMPANY: <b>Atlanta Environmental Management Inc</b>		ADDRESS: <b>2580 Northeast Expressway NE Atlanta, GA 30345</b>		ANALYSIS REQUESTED										Visit our website <a href="http://www.aesatlanta.com">www.aesatlanta.com</a> to check on the status of your results, place bottle orders, etc.		No # of Containers																	
PHONE: 404-329-9006		FAX: 404-329-2057		Lead ( 200.8) <table border="1" style="display: inline-table; border-collapse: collapse;"> <tr><td style="width: 15px; height: 15px;"></td><td style="width: 15px; height: 15px;"></td><td style="width: 15px; height: 15px;"></td><td style="width: 15px; height: 15px;"></td><td style="width: 15px; height: 15px;"></td><td style="width: 15px; height: 15px;"></td><td style="width: 15px; height: 15px;"></td><td style="width: 15px; height: 15px;"></td><td style="width: 15px; height: 15px;"></td><td style="width: 15px; height: 15px;"></td><td style="width: 15px; height: 15px;"></td><td style="width: 15px; height: 15px;"></td><td style="width: 15px; height: 15px;"></td><td style="width: 15px; height: 15px;"></td><td style="width: 15px; height: 15px;"></td><td style="width: 15px; height: 15px;"></td><td style="width: 15px; height: 15px;"></td><td style="width: 15px; height: 15px;"></td><td style="width: 15px; height: 15px;"></td><td style="width: 15px; height: 15px;"></td></tr> </table>																													
SAMPLED BY: Leona Miles		SIGNATURE: <i>Leona Miles</i>		PRESERVATION (See codes)										REMARKS																			
#	SAMPLE ID	SAMPLED		Grab	Composite	Matrix (See codes)																											
		DATE	TIME																														
1	0101-101817-DF-007-B	10/18/2017	0600	X		DW	X																										
2	0101-101817-DF-016-A	10/18/2017	0627	X		DW	X																										
3	0101-101817-DF-016-B	10/18/2017	0628	X		DW	X																										
4	0101-101817-DF-017-A	10/18/2017	0630	X		DW	X																										
5	0101-101817-DF-017-B	10/18/2017	0631	X		DW	X																										
6	0101-101817-DF-018-A	10/18/2017	0621	X		DW	X																										
7	0101-101817-DF-018-B	10/18/2017	0622	X		DW	X																										
8	0101-101817-DF-019-A	10/18/2017	0623	X		DW	X																										
9	0101-101817-DF-019-B	10/18/2017	0624	X		DW	X																										
10	0101-101817-AF-001-A	10/18/2017	0611	X		DW	X																										
11	0101-101817-AF-001-B	10/18/2017	0612	X		DW	X																										
12																																	
13																																	
14																																	
15																																	

RELINQUISHED BY		DATE/TIME		RECEIVED BY		DATE/TIME		PROJECT INFORMATION										RECEIPT	
1: <i>Leona Miles</i>		10/18/17 0815		1: <i>Mason</i>		10/18/17 0815		PROJECT NAME: <b>DCSD</b>										Total # of Containers	
2: <i>Mason</i>		10/18/17 0836		2: <i>Tampas</i>		10/18/17 0836		PROJECT #: <b>1561-1601</b>										Turnaround Time Request <input type="radio"/> Standard 5 Business Days <input type="radio"/> 2 Business Day Rush <input type="radio"/> Next Business Day Rush <input type="radio"/> Same Day Rush <b>(auth req.)</b> <input checked="" type="radio"/> Other: 10 business Days	
3:				3:				SITE ADDRESS: <b>0101</b>											
								SEND REPORT TO: <b>leona-miles@aem-net.com</b>											
SPECIAL INSTRUCTIONS/COMMENTS:  <b>LAB TO PRESERVE</b>				SHIPMENT METHOD OUT / / VIA: IN / / VIA: <input checked="" type="checkbox"/> CLIENT FedEx UPS MAIL COURIER GREYHOUND OTHER				INVOICE TO: Leona Miles (IF DIFFERENT FROM ABOVE)										STATE PROGRAM (if any):	
								QUOTE #: _____ PO#: _____										E-mail? Y/N; Fax? Y/N	
																		DATA PACKAGE: I II III IV	

**SAMPLES RECEIVED AFTER 3PM OR SATURDAY ARE CONSIDERED AS RECEIVED ON THE NEXT BUSINESS DAY; IF NO TAT IS MARKED ON COC AES WILL PROCEED AS STANDARD TAT.**  
**SAMPLES ARE DISPOSED OF 30 DAYS AFTER COMPLETION OF REPORT UNLESS OTHER ARRANGEMENTS ARE MADE.**

MATRIX CODES: A = Air GW = Groundwater SE = Sediment SO = Soil SW = Surface Water DW = Drinking Water W = Water (Blanks) O = Other (specify)  
 PRESERVATIVE CODES: H+I = Hydrochloric acid + ice I = Ice only N = Nitric acid S+I = Sulfuric acid + ice S/M+I = Sodium Bisulfate/Methanol + ice O = Other (specify) NA = None

**Analytical Environmental Services, Inc**

**Date:** 31-Oct-17

<b>Client:</b> Atlanta Environmental Mgmt	<b>Client Sample ID:</b> 0101-101817-CS-003-A
<b>Project Name:</b> DCSD - 0101	<b>Collection Date:</b> 10/18/2017 5:42:00 AM
<b>Lab ID:</b> 1710G77-001	<b>Matrix:</b> Drinking Water

Analyses	Result	Reporting Limit	Qual	Units	BatchID	Dilution Factor	Date Analyzed	Analyst
<b>Trace Elements by ICP/MS E200.8</b>								
				<b>(E200.2)</b>				
Lead	1.06	1.00		ug/L	250260	1	10/24/2017 03:05	JR

**Qualifiers:**

- \* Value exceeds maximum contaminant level
- BRL Below reporting limit
- H Holding times for preparation or analysis exceeded
- N Analyte not NELAC certified
- B Analyte detected in the associated method blank
- > Greater than Result value

- E Estimated (value above quantitation range)
- S Spike Recovery outside limits due to matrix
- Narr See case narrative
- NC Not confirmed
- < Less than Result value
- J Estimated value detected below Reporting Limit

**Analytical Environmental Services, Inc**

**Date:** 31-Oct-17

<b>Client:</b> Atlanta Environmental Mgmt	<b>Client Sample ID:</b> 0101-101817-CS-003-B
<b>Project Name:</b> DCSD - 0101	<b>Collection Date:</b> 10/18/2017 5:43:00 AM
<b>Lab ID:</b> 1710G77-002	<b>Matrix:</b> Drinking Water

Analyses	Result	Reporting Limit	Qual	Units	BatchID	Dilution Factor	Date Analyzed	Analyst
<b>Trace Elements by ICP/MS E200.8</b>					<b>(E200.2)</b>			
Lead	BRL	1.00		ug/L	250260	1	10/24/2017 03:12	JR

**Qualifiers:**

- \* Value exceeds maximum contaminant level
- BRL Below reporting limit
- H Holding times for preparation or analysis exceeded
- N Analyte not NELAC certified
- B Analyte detected in the associated method blank
- > Greater than Result value

- E Estimated (value above quantitation range)
- S Spike Recovery outside limits due to matrix
- Narr See case narrative
- NC Not confirmed
- < Less than Result value
- J Estimated value detected below Reporting Limit

**Analytical Environmental Services, Inc**

**Date:** 31-Oct-17

<b>Client:</b> Atlanta Environmental Mgmt	<b>Client Sample ID:</b> 0101-101817-CS-004-A
<b>Project Name:</b> DCSD - 0101	<b>Collection Date:</b> 10/18/2017 5:44:00 AM
<b>Lab ID:</b> 1710G77-003	<b>Matrix:</b> Drinking Water

Analyses	Result	Reporting Limit	Qual	Units	BatchID	Dilution Factor	Date Analyzed	Analyst
<b>Trace Elements by ICP/MS E200.8</b>					<b>(E200.2)</b>			
Lead	BRL	1.00		ug/L	250260	1	10/24/2017 20:08	JR

**Qualifiers:**

- \* Value exceeds maximum contaminant level
- BRL Below reporting limit
- H Holding times for preparation or analysis exceeded
- N Analyte not NELAC certified
- B Analyte detected in the associated method blank
- > Greater than Result value

- E Estimated (value above quantitation range)
- S Spike Recovery outside limits due to matrix
- Narr See case narrative
- NC Not confirmed
- < Less than Result value
- J Estimated value detected below Reporting Limit

**Analytical Environmental Services, Inc**

**Date:** 31-Oct-17

<b>Client:</b> Atlanta Environmental Mgmt	<b>Client Sample ID:</b> 0101-101817-CS-004-B
<b>Project Name:</b> DCSD - 0101	<b>Collection Date:</b> 10/18/2017 5:45:00 AM
<b>Lab ID:</b> 1710G77-004	<b>Matrix:</b> Drinking Water

Analyses	Result	Reporting Limit	Qual	Units	BatchID	Dilution Factor	Date Analyzed	Analyst
<b>Trace Elements by ICP/MS E200.8</b>					<b>(E200.2)</b>			
Lead	BRL	1.00		ug/L	250263	1	10/24/2017 16:20	JR

**Qualifiers:**

- \* Value exceeds maximum contaminant level
- BRL Below reporting limit
- H Holding times for preparation or analysis exceeded
- N Analyte not NELAC certified
- B Analyte detected in the associated method blank
- > Greater than Result value

- E Estimated (value above quantitation range)
- S Spike Recovery outside limits due to matrix
- Narr See case narrative
- NC Not confirmed
- < Less than Result value
- J Estimated value detected below Reporting Limit

**Analytical Environmental Services, Inc**

**Date:** 31-Oct-17

<b>Client:</b> Atlanta Environmental Mgmt	<b>Client Sample ID:</b> 0101-101817-CS-005-A
<b>Project Name:</b> DCSD - 0101	<b>Collection Date:</b> 10/18/2017 5:46:00 AM
<b>Lab ID:</b> 1710G77-005	<b>Matrix:</b> Drinking Water

Analyses	Result	Reporting Limit	Qual	Units	BatchID	Dilution Factor	Date Analyzed	Analyst
<b>Trace Elements by ICP/MS E200.8</b>					<b>(E200.2)</b>			
Lead	1.31	1.00		ug/L	250260	1	10/24/2017 20:14	JR

**Qualifiers:**

- \* Value exceeds maximum contaminant level
- BRL Below reporting limit
- H Holding times for preparation or analysis exceeded
- N Analyte not NELAC certified
- B Analyte detected in the associated method blank
- > Greater than Result value

- E Estimated (value above quantitation range)
- S Spike Recovery outside limits due to matrix
- Narr See case narrative
- NC Not confirmed
- < Less than Result value
- J Estimated value detected below Reporting Limit

**Analytical Environmental Services, Inc**

**Date:** 31-Oct-17

<b>Client:</b> Atlanta Environmental Mgmt	<b>Client Sample ID:</b> 0101-101817-CS-005-B
<b>Project Name:</b> DCSD - 0101	<b>Collection Date:</b> 10/18/2017 5:47:00 AM
<b>Lab ID:</b> 1710G77-006	<b>Matrix:</b> Drinking Water

Analyses	Result	Reporting Limit	Qual	Units	BatchID	Dilution Factor	Date Analyzed	Analyst
<b>Trace Elements by ICP/MS E200.8</b>					<b>(E200.2)</b>			
Lead	BRL	1.00		ug/L	250264	1	10/23/2017 14:15	JR

**Qualifiers:**

- \* Value exceeds maximum contaminant level
- BRL Below reporting limit
- H Holding times for preparation or analysis exceeded
- N Analyte not NELAC certified
- B Analyte detected in the associated method blank
- > Greater than Result value

- E Estimated (value above quantitation range)
- S Spike Recovery outside limits due to matrix
- Narr See case narrative
- NC Not confirmed
- < Less than Result value
- J Estimated value detected below Reporting Limit



**Analytical Environmental Services, Inc**

**Date:** 31-Oct-17

<b>Client:</b> Atlanta Environmental Mgmt	<b>Client Sample ID:</b> 0101-101817-CS-006-A
<b>Project Name:</b> DCSD - 0101	<b>Collection Date:</b> 10/18/2017 5:49:00 AM
<b>Lab ID:</b> 1710G77-007	<b>Matrix:</b> Drinking Water

Analyses	Result	Reporting Limit	Qual	Units	BatchID	Dilution Factor	Date Analyzed	Analyst
<b>Trace Elements by ICP/MS E200.8</b>					<b>(E200.2)</b>			
Lead	BRL	1.00		ug/L	250264	1	10/24/2017 17:11	JR

**Qualifiers:**

- \* Value exceeds maximum contaminant level
- BRL Below reporting limit
- H Holding times for preparation or analysis exceeded
- N Analyte not NELAC certified
- B Analyte detected in the associated method blank
- > Greater than Result value

- E Estimated (value above quantitation range)
- S Spike Recovery outside limits due to matrix
- Narr See case narrative
- NC Not confirmed
- < Less than Result value
- J Estimated value detected below Reporting Limit

**Analytical Environmental Services, Inc**

**Date:** 31-Oct-17

<b>Client:</b> Atlanta Environmental Mgmt	<b>Client Sample ID:</b> 0101-101817-CS-006-B
<b>Project Name:</b> DCSD - 0101	<b>Collection Date:</b> 10/18/2017 5:50:00 AM
<b>Lab ID:</b> 1710G77-008	<b>Matrix:</b> Drinking Water

Analyses	Result	Reporting Limit	Qual	Units	BatchID	Dilution Factor	Date Analyzed	Analyst
<b>Trace Elements by ICP/MS E200.8</b>					<b>(E200.2)</b>			
Lead	BRL	1.00		ug/L	250264	1	10/24/2017 17:17	JR

**Qualifiers:**

- \* Value exceeds maximum contaminant level
- BRL Below reporting limit
- H Holding times for preparation or analysis exceeded
- N Analyte not NELAC certified
- B Analyte detected in the associated method blank
- > Greater than Result value

- E Estimated (value above quantitation range)
- S Spike Recovery outside limits due to matrix
- Narr See case narrative
- NC Not confirmed
- < Less than Result value
- J Estimated value detected below Reporting Limit

**Analytical Environmental Services, Inc**

**Date:** 31-Oct-17

<b>Client:</b> Atlanta Environmental Mgmt	<b>Client Sample ID:</b> 0101-101817-CS-007-A
<b>Project Name:</b> DCSD - 0101	<b>Collection Date:</b> 10/18/2017 5:51:00 AM
<b>Lab ID:</b> 1710G77-009	<b>Matrix:</b> Drinking Water

Analyses	Result	Reporting Limit	Qual	Units	BatchID	Dilution Factor	Date Analyzed	Analyst
<b>Trace Elements by ICP/MS E200.8</b>					<b>(E200.2)</b>			
Lead	BRL	1.00		ug/L	250264	1	10/24/2017 17:23	JR

**Qualifiers:**

- \* Value exceeds maximum contaminant level
- BRL Below reporting limit
- H Holding times for preparation or analysis exceeded
- N Analyte not NELAC certified
- B Analyte detected in the associated method blank
- > Greater than Result value

- E Estimated (value above quantitation range)
- S Spike Recovery outside limits due to matrix
- Narr See case narrative
- NC Not confirmed
- < Less than Result value
- J Estimated value detected below Reporting Limit

**Analytical Environmental Services, Inc**

**Date:** 31-Oct-17

<b>Client:</b> Atlanta Environmental Mgmt	<b>Client Sample ID:</b> 0101-101817-CS-007-B
<b>Project Name:</b> DCSD - 0101	<b>Collection Date:</b> 10/18/2017 5:52:00 AM
<b>Lab ID:</b> 1710G77-010	<b>Matrix:</b> Drinking Water

Analyses	Result	Reporting Limit	Qual	Units	BatchID	Dilution Factor	Date Analyzed	Analyst
<b>Trace Elements by ICP/MS E200.8</b>					<b>(E200.2)</b>			
Lead	BRL	1.00		ug/L	250264	1	10/24/2017 17:30	JR

**Qualifiers:**

- \* Value exceeds maximum contaminant level
- BRL Below reporting limit
- H Holding times for preparation or analysis exceeded
- N Analyte not NELAC certified
- B Analyte detected in the associated method blank
- > Greater than Result value

- E Estimated (value above quantitation range)
- S Spike Recovery outside limits due to matrix
- Narr See case narrative
- NC Not confirmed
- < Less than Result value
- J Estimated value detected below Reporting Limit

**Analytical Environmental Services, Inc**

**Date:** 31-Oct-17

<b>Client:</b> Atlanta Environmental Mgmt	<b>Client Sample ID:</b> 0101-101817-DF-001-A
<b>Project Name:</b> DCSD - 0101	<b>Collection Date:</b> 10/18/2017 6:05:00 AM
<b>Lab ID:</b> 1710G77-011	<b>Matrix:</b> Drinking Water

Analyses	Result	Reporting Limit	Qual	Units	BatchID	Dilution Factor	Date Analyzed	Analyst
<b>Trace Elements by ICP/MS E200.8</b>					<b>(E200.2)</b>			
Lead	BRL	1.00		ug/L	250264	1	10/24/2017 17:36	JR

**Qualifiers:**

- \* Value exceeds maximum contaminant level
- BRL Below reporting limit
- H Holding times for preparation or analysis exceeded
- N Analyte not NELAC certified
- B Analyte detected in the associated method blank
- > Greater than Result value

- E Estimated (value above quantitation range)
- S Spike Recovery outside limits due to matrix
- Narr See case narrative
- NC Not confirmed
- < Less than Result value
- J Estimated value detected below Reporting Limit

**Analytical Environmental Services, Inc**

**Date:** 31-Oct-17

<b>Client:</b> Atlanta Environmental Mgmt	<b>Client Sample ID:</b> 0101-101817-DF-001-B
<b>Project Name:</b> DCSD - 0101	<b>Collection Date:</b> 10/18/2017 6:06:00 AM
<b>Lab ID:</b> 1710G77-012	<b>Matrix:</b> Drinking Water

Analyses	Result	Reporting Limit	Qual	Units	BatchID	Dilution Factor	Date Analyzed	Analyst
<b>Trace Elements by ICP/MS E200.8</b>					<b>(E200.2)</b>			
Lead	BRL	1.00		ug/L	250264	1	10/24/2017 17:42	JR

**Qualifiers:**

- \* Value exceeds maximum contaminant level
- BRL Below reporting limit
- H Holding times for preparation or analysis exceeded
- N Analyte not NELAC certified
- B Analyte detected in the associated method blank
- > Greater than Result value

- E Estimated (value above quantitation range)
- S Spike Recovery outside limits due to matrix
- Narr See case narrative
- NC Not confirmed
- < Less than Result value
- J Estimated value detected below Reporting Limit

**Analytical Environmental Services, Inc**

**Date:** 31-Oct-17

<b>Client:</b> Atlanta Environmental Mgmt	<b>Client Sample ID:</b> 0101-101817-DF-006-A
<b>Project Name:</b> DCSD - 0101	<b>Collection Date:</b> 10/18/2017 5:56:00 AM
<b>Lab ID:</b> 1710G77-013	<b>Matrix:</b> Drinking Water

Analyses	Result	Reporting Limit	Qual	Units	BatchID	Dilution Factor	Date Analyzed	Analyst
<b>Trace Elements by ICP/MS E200.8</b>					<b>(E200.2)</b>			
Lead	4.07	1.00		ug/L	250264	1	10/24/2017 17:49	JR

**Qualifiers:**

- \* Value exceeds maximum contaminant level
- BRL Below reporting limit
- H Holding times for preparation or analysis exceeded
- N Analyte not NELAC certified
- B Analyte detected in the associated method blank
- > Greater than Result value

- E Estimated (value above quantitation range)
- S Spike Recovery outside limits due to matrix
- Narr See case narrative
- NC Not confirmed
- < Less than Result value
- J Estimated value detected below Reporting Limit

**Analytical Environmental Services, Inc**

**Date:** 31-Oct-17

<b>Client:</b> Atlanta Environmental Mgmt	<b>Client Sample ID:</b> 0101-101817-DF-006-B
<b>Project Name:</b> DCSD - 0101	<b>Collection Date:</b> 10/18/2017 5:57:00 AM
<b>Lab ID:</b> 1710G77-014	<b>Matrix:</b> Drinking Water

Analyses	Result	Reporting Limit	Qual	Units	BatchID	Dilution Factor	Date Analyzed	Analyst
<b>Trace Elements by ICP/MS E200.8</b>					<b>(E200.2)</b>			
Lead	2.02	1.00		ug/L	250264	1	10/24/2017 17:55	JR

**Qualifiers:**

- \* Value exceeds maximum contaminant level
- BRL Below reporting limit
- H Holding times for preparation or analysis exceeded
- N Analyte not NELAC certified
- B Analyte detected in the associated method blank
- > Greater than Result value

- E Estimated (value above quantitation range)
- S Spike Recovery outside limits due to matrix
- Narr See case narrative
- NC Not confirmed
- < Less than Result value
- J Estimated value detected below Reporting Limit



**Analytical Environmental Services, Inc**

**Date:** 31-Oct-17

<b>Client:</b> Atlanta Environmental Mgmt	<b>Client Sample ID:</b> 0101-101817-DF-007-A
<b>Project Name:</b> DCSD - 0101	<b>Collection Date:</b> 10/18/2017 5:59:00 AM
<b>Lab ID:</b> 1710G77-015	<b>Matrix:</b> Drinking Water

Analyses	Result	Reporting Limit	Qual	Units	BatchID	Dilution Factor	Date Analyzed	Analyst
<b>Trace Elements by ICP/MS E200.8</b>					<b>(E200.2)</b>			
Lead	2.05	1.00		ug/L	250264	1	10/24/2017 18:27	JR

**Qualifiers:**

- \* Value exceeds maximum contaminant level
- BRL Below reporting limit
- H Holding times for preparation or analysis exceeded
- N Analyte not NELAC certified
- B Analyte detected in the associated method blank
- > Greater than Result value

- E Estimated (value above quantitation range)
- S Spike Recovery outside limits due to matrix
- Narr See case narrative
- NC Not confirmed
- < Less than Result value
- J Estimated value detected below Reporting Limit

**Analytical Environmental Services, Inc**

**Date:** 31-Oct-17

<b>Client:</b> Atlanta Environmental Mgmt	<b>Client Sample ID:</b> 0101-101817-DF-007-B
<b>Project Name:</b> DCSD - 0101	<b>Collection Date:</b> 10/18/2017 6:00:00 AM
<b>Lab ID:</b> 1710G77-016	<b>Matrix:</b> Drinking Water

Analyses	Result	Reporting Limit	Qual	Units	BatchID	Dilution Factor	Date Analyzed	Analyst
<b>Trace Elements by ICP/MS E200.8</b>					<b>(E200.2)</b>			
Lead	1.16	1.00		ug/L	250264	1	10/23/2017 14:33	JR

**Qualifiers:**

- \* Value exceeds maximum contaminant level
- BRL Below reporting limit
- H Holding times for preparation or analysis exceeded
- N Analyte not NELAC certified
- B Analyte detected in the associated method blank
- > Greater than Result value

- E Estimated (value above quantitation range)
- S Spike Recovery outside limits due to matrix
- Narr See case narrative
- NC Not confirmed
- < Less than Result value
- J Estimated value detected below Reporting Limit

**Analytical Environmental Services, Inc**

**Date:** 31-Oct-17

<b>Client:</b> Atlanta Environmental Mgmt	<b>Client Sample ID:</b> 0101-101817-DF-016-A
<b>Project Name:</b> DCSD - 0101	<b>Collection Date:</b> 10/18/2017 6:27:00 AM
<b>Lab ID:</b> 1710G77-017	<b>Matrix:</b> Drinking Water

Analyses	Result	Reporting Limit	Qual	Units	BatchID	Dilution Factor	Date Analyzed	Analyst
<b>Trace Elements by ICP/MS E200.8</b>					<b>(E200.2)</b>			
Lead	BRL	1.00		ug/L	250264	1	10/24/2017 18:33	JR

**Qualifiers:**

- \* Value exceeds maximum contaminant level
- BRL Below reporting limit
- H Holding times for preparation or analysis exceeded
- N Analyte not NELAC certified
- B Analyte detected in the associated method blank
- > Greater than Result value

- E Estimated (value above quantitation range)
- S Spike Recovery outside limits due to matrix
- Narr See case narrative
- NC Not confirmed
- < Less than Result value
- J Estimated value detected below Reporting Limit

**Analytical Environmental Services, Inc**

**Date:** 31-Oct-17

<b>Client:</b> Atlanta Environmental Mgmt	<b>Client Sample ID:</b> 0101-101817-DF-016-B
<b>Project Name:</b> DCSD - 0101	<b>Collection Date:</b> 10/18/2017 6:28:00 AM
<b>Lab ID:</b> 1710G77-018	<b>Matrix:</b> Drinking Water

Analyses	Result	Reporting Limit	Qual	Units	BatchID	Dilution Factor	Date Analyzed	Analyst
<b>Trace Elements by ICP/MS E200.8</b>					<b>(E200.2)</b>			
Lead	BRL	1.00		ug/L	250264	1	10/24/2017 18:39	JR

**Qualifiers:**

- \* Value exceeds maximum contaminant level
- BRL Below reporting limit
- H Holding times for preparation or analysis exceeded
- N Analyte not NELAC certified
- B Analyte detected in the associated method blank
- > Greater than Result value

- E Estimated (value above quantitation range)
- S Spike Recovery outside limits due to matrix
- Narr See case narrative
- NC Not confirmed
- < Less than Result value
- J Estimated value detected below Reporting Limit

**Analytical Environmental Services, Inc**

**Date:** 31-Oct-17

<b>Client:</b> Atlanta Environmental Mgmt	<b>Client Sample ID:</b> 0101-101817-DF-017-A
<b>Project Name:</b> DCSD - 0101	<b>Collection Date:</b> 10/18/2017 6:30:00 AM
<b>Lab ID:</b> 1710G77-019	<b>Matrix:</b> Drinking Water

Analyses	Result	Reporting Limit	Qual	Units	BatchID	Dilution Factor	Date Analyzed	Analyst
<b>Trace Elements by ICP/MS E200.8</b>					<b>(E200.2)</b>			
Lead	BRL	1.00		ug/L	250265	1	10/24/2017 21:43	JR

**Qualifiers:**

- \* Value exceeds maximum contaminant level
- BRL Below reporting limit
- H Holding times for preparation or analysis exceeded
- N Analyte not NELAC certified
- B Analyte detected in the associated method blank
- > Greater than Result value

- E Estimated (value above quantitation range)
- S Spike Recovery outside limits due to matrix
- Narr See case narrative
- NC Not confirmed
- < Less than Result value
- J Estimated value detected below Reporting Limit

**Analytical Environmental Services, Inc**

**Date:** 31-Oct-17

<b>Client:</b> Atlanta Environmental Mgmt	<b>Client Sample ID:</b> 0101-101817-DF-017-B
<b>Project Name:</b> DCSD - 0101	<b>Collection Date:</b> 10/18/2017 6:31:00 AM
<b>Lab ID:</b> 1710G77-020	<b>Matrix:</b> Drinking Water

Analyses	Result	Reporting Limit	Qual	Units	BatchID	Dilution Factor	Date Analyzed	Analyst
<b>Trace Elements by ICP/MS E200.8</b>					<b>(E200.2)</b>			
Lead	BRL	1.00		ug/L	250265	1	10/24/2017 22:27	JR

**Qualifiers:**

- \* Value exceeds maximum contaminant level
- BRL Below reporting limit
- H Holding times for preparation or analysis exceeded
- N Analyte not NELAC certified
- B Analyte detected in the associated method blank
- > Greater than Result value

- E Estimated (value above quantitation range)
- S Spike Recovery outside limits due to matrix
- Narr See case narrative
- NC Not confirmed
- < Less than Result value
- J Estimated value detected below Reporting Limit

**Analytical Environmental Services, Inc**

**Date:** 31-Oct-17

<b>Client:</b> Atlanta Environmental Mgmt	<b>Client Sample ID:</b> 0101-101817-DF-018-A
<b>Project Name:</b> DCSD - 0101	<b>Collection Date:</b> 10/18/2017 6:21:00 AM
<b>Lab ID:</b> 1710G77-021	<b>Matrix:</b> Drinking Water

Analyses	Result	Reporting Limit	Qual	Units	BatchID	Dilution Factor	Date Analyzed	Analyst
<b>Trace Elements by ICP/MS E200.8</b>					<b>(E200.2)</b>			
Lead	BRL	1.00		ug/L	250265	1	10/24/2017 22:33	JR

**Qualifiers:**

- \* Value exceeds maximum contaminant level
- BRL Below reporting limit
- H Holding times for preparation or analysis exceeded
- N Analyte not NELAC certified
- B Analyte detected in the associated method blank
- > Greater than Result value

- E Estimated (value above quantitation range)
- S Spike Recovery outside limits due to matrix
- Narr See case narrative
- NC Not confirmed
- < Less than Result value
- J Estimated value detected below Reporting Limit

**Analytical Environmental Services, Inc**

**Date:** 31-Oct-17

<b>Client:</b> Atlanta Environmental Mgmt	<b>Client Sample ID:</b> 0101-101817-DF-018-B
<b>Project Name:</b> DCSD - 0101	<b>Collection Date:</b> 10/18/2017 6:22:00 AM
<b>Lab ID:</b> 1710G77-022	<b>Matrix:</b> Drinking Water

Analyses	Result	Reporting Limit	Qual	Units	BatchID	Dilution Factor	Date Analyzed	Analyst
<b>Trace Elements by ICP/MS E200.8</b>					<b>(E200.2)</b>			
Lead	BRL	1.00		ug/L	250265	1	10/26/2017 20:33	JR

**Qualifiers:**

- \* Value exceeds maximum contaminant level
- BRL Below reporting limit
- H Holding times for preparation or analysis exceeded
- N Analyte not NELAC certified
- B Analyte detected in the associated method blank
- > Greater than Result value

- E Estimated (value above quantitation range)
- S Spike Recovery outside limits due to matrix
- Narr See case narrative
- NC Not confirmed
- < Less than Result value
- J Estimated value detected below Reporting Limit



**Analytical Environmental Services, Inc**

**Date:** 31-Oct-17

<b>Client:</b> Atlanta Environmental Mgmt	<b>Client Sample ID:</b> 0101-101817-DF-019-A
<b>Project Name:</b> DCSD - 0101	<b>Collection Date:</b> 10/18/2017 6:23:00 AM
<b>Lab ID:</b> 1710G77-023	<b>Matrix:</b> Drinking Water

Analyses	Result	Reporting Limit	Qual	Units	BatchID	Dilution Factor	Date Analyzed	Analyst
<b>Trace Elements by ICP/MS E200.8</b>					<b>(E200.2)</b>			
Lead	BRL	1.00		ug/L	250265	1	10/24/2017 22:46	JR

**Qualifiers:**

- \* Value exceeds maximum contaminant level
- BRL Below reporting limit
- H Holding times for preparation or analysis exceeded
- N Analyte not NELAC certified
- B Analyte detected in the associated method blank
- > Greater than Result value

- E Estimated (value above quantitation range)
- S Spike Recovery outside limits due to matrix
- Narr See case narrative
- NC Not confirmed
- < Less than Result value
- J Estimated value detected below Reporting Limit

**Analytical Environmental Services, Inc**

**Date:** 31-Oct-17

<b>Client:</b> Atlanta Environmental Mgmt	<b>Client Sample ID:</b> 0101-101817-DF-019-B
<b>Project Name:</b> DCSD - 0101	<b>Collection Date:</b> 10/18/2017 6:24:00 AM
<b>Lab ID:</b> 1710G77-024	<b>Matrix:</b> Drinking Water

Analyses	Result	Reporting Limit	Qual	Units	BatchID	Dilution Factor	Date Analyzed	Analyst
<b>Trace Elements by ICP/MS E200.8</b>					<b>(E200.2)</b>			
Lead	BRL	1.00		ug/L	250265	1	10/26/2017 20:52	JR

**Qualifiers:**

- \* Value exceeds maximum contaminant level
- BRL Below reporting limit
- H Holding times for preparation or analysis exceeded
- N Analyte not NELAC certified
- B Analyte detected in the associated method blank
- > Greater than Result value

- E Estimated (value above quantitation range)
- S Spike Recovery outside limits due to matrix
- Narr See case narrative
- NC Not confirmed
- < Less than Result value
- J Estimated value detected below Reporting Limit

**Analytical Environmental Services, Inc**

**Date:** 31-Oct-17

<b>Client:</b> Atlanta Environmental Mgmt	<b>Client Sample ID:</b> 0101-101817-AF-001-A
<b>Project Name:</b> DCSD - 0101	<b>Collection Date:</b> 10/18/2017 6:11:00 AM
<b>Lab ID:</b> 1710G77-025	<b>Matrix:</b> Drinking Water

Analyses	Result	Reporting Limit	Qual	Units	BatchID	Dilution Factor	Date Analyzed	Analyst
<b>Trace Elements by ICP/MS E200.8</b>					<b>(E200.2)</b>			
Lead	1.94	1.00		ug/L	250265	1	10/24/2017 22:59	JR

**Qualifiers:**

- \* Value exceeds maximum contaminant level
- BRL Below reporting limit
- H Holding times for preparation or analysis exceeded
- N Analyte not NELAC certified
- B Analyte detected in the associated method blank
- > Greater than Result value

- E Estimated (value above quantitation range)
- S Spike Recovery outside limits due to matrix
- Narr See case narrative
- NC Not confirmed
- < Less than Result value
- J Estimated value detected below Reporting Limit

**Analytical Environmental Services, Inc**

**Date:** 31-Oct-17

<b>Client:</b> Atlanta Environmental Mgmt	<b>Client Sample ID:</b> 0101-101817-AF-001-B
<b>Project Name:</b> DCSD - 0101	<b>Collection Date:</b> 10/18/2017 6:12:00 AM
<b>Lab ID:</b> 1710G77-026	<b>Matrix:</b> Drinking Water

Analyses	Result	Reporting Limit	Qual	Units	BatchID	Dilution Factor	Date Analyzed	Analyst
<b>Trace Elements by ICP/MS E200.8</b>					<b>(E200.2)</b>			
Lead	BRL	1.00		ug/L	250265	1	10/26/2017 20:59	JR

**Qualifiers:**

- \* Value exceeds maximum contaminant level
- BRL Below reporting limit
- H Holding times for preparation or analysis exceeded
- N Analyte not NELAC certified
- B Analyte detected in the associated method blank
- > Greater than Result value

- E Estimated (value above quantitation range)
- S Spike Recovery outside limits due to matrix
- Narr See case narrative
- NC Not confirmed
- < Less than Result value
- J Estimated value detected below Reporting Limit

### SAMPLE/COOLER RECEIPT CHECKLIST

1. Client Name: \_\_\_\_\_

AES Work Order Number: \_\_\_\_\_

2. Carrier: FedEx  UPS  USPS  Client  Courier  Other \_\_\_\_\_

	Yes	No	N/A	Details	Comments
3. Shipping container/cooler received in good condition?				damaged <input type="checkbox"/> leaking <input type="checkbox"/> other <input type="checkbox"/>	
4. Custody seals present on shipping container?					
5. Custody seals intact on shipping container?					
6. Temperature blanks present?					
7. Cooler temperature(s) within limits of 0-6°C? [See item 13 and 14 for temperature recordings.]				Cooling initiated for recently collected samples / ice present <input type="checkbox"/>	
8. Chain of Custody (COC) present?					
9. Chain of Custody signed, dated, and timed when relinquished and received?					
10. Sampler name and/or signature on COC?					
11. Were all samples received within holding time?					
12. TAT marked on the COC?				If no TAT indicated, proceeded with standard TAT per Terms & Conditions. <input type="checkbox"/>	

13. Cooler 1 Temperature \_\_\_\_\_ °C    Cooler 2 Temperature \_\_\_\_\_ °C    Cooler 3 Temperature \_\_\_\_\_ °C    Cooler 4 Temperature \_\_\_\_\_ °C  
 Cooler 5 Temperature \_\_\_\_\_ °C    Cooler 6 Temperature \_\_\_\_\_ °C    Cooler 7 Temperature \_\_\_\_\_ °C    Cooler 8 Temperature \_\_\_\_\_ °C

15. Comments: \_\_\_\_\_

I certify that I have completed sections 1-15 (dated initials). \_\_\_\_\_

	Yes	No	N/A	Details	Comments
16. Were sample containers intact upon receipt?					
17. Custody seals present on sample containers?					
18. Custody seals intact on sample containers?					
19. Do sample container labels match the COC?				incomplete info <input type="checkbox"/> illegible <input type="checkbox"/> no label <input type="checkbox"/> other <input type="checkbox"/>	
20. Are analyses requested indicated on the COC?					
21. Were all of the samples listed on the COC received?				samples received but not listed on COC <input type="checkbox"/> samples listed on COC not received <input type="checkbox"/>	
22. Was the sample collection date/time noted?					
23. Did we receive sufficient sample volume for indicated analyses?					
24. Were samples received in appropriate containers?					
25. Were VOA samples received without headspace (< 1/4" bubble)?					
26. Were trip blanks submitted?				listed on COC <input type="checkbox"/> not listed on COC <input type="checkbox"/>	

27. Comments: \_\_\_\_\_

I certify that I have completed sections 16-27 (dated initials). \_\_\_\_\_

	Yes	No	N/A	Details	Comments
28. Have containers needing chemical preservation been checked? *					
29. Containers meet preservation guidelines?					
30. Was pH adjusted at Sample Receipt?					

I certify that I have completed sections 28-30 (dated initials). \_\_\_\_\_

Client: Atlanta Environmental Mgmt  
 Project Name: DCSD - 0101  
 Workorder: 1710G77

**ANALYTICAL QC SUMMARY REPORT**

BatchID: 250260

Sample ID: <b>MB-250260</b>	Client ID:	Units: <b>ug/L</b>	Prep Date: <b>10/20/2017</b>	Run No: <b>355072</b>							
SampleType: <b>MBLK</b>	TestCode: <b>Trace Elements by ICP/MS E200.8</b>	BatchID: <b>250260</b>	Analysis Date: <b>10/24/2017</b>	Seq No: <b>7816274</b>							
Analyte	Result	RPT Limit	SPK value	SPK Ref Val	%REC	Low Limit	High Limit	RPD Ref Val	%RPD	RPD Limit	Qual

Lead BRL 1.00

Sample ID: <b>LCS-250260</b>	Client ID:	Units: <b>ug/L</b>	Prep Date: <b>10/20/2017</b>	Run No: <b>355072</b>							
SampleType: <b>LCS</b>	TestCode: <b>Trace Elements by ICP/MS E200.8</b>	BatchID: <b>250260</b>	Analysis Date: <b>10/24/2017</b>	Seq No: <b>7816277</b>							
Analyte	Result	RPT Limit	SPK value	SPK Ref Val	%REC	Low Limit	High Limit	RPD Ref Val	%RPD	RPD Limit	Qual

Lead 85.89 1.00 100.0 85.9 85 115

Sample ID: <b>1710G51-001AMS</b>	Client ID:	Units: <b>ug/L</b>	Prep Date: <b>10/20/2017</b>	Run No: <b>355072</b>							
SampleType: <b>MS</b>	TestCode: <b>Trace Elements by ICP/MS E200.8</b>	BatchID: <b>250260</b>	Analysis Date: <b>10/24/2017</b>	Seq No: <b>7816279</b>							
Analyte	Result	RPT Limit	SPK value	SPK Ref Val	%REC	Low Limit	High Limit	RPD Ref Val	%RPD	RPD Limit	Qual

Lead 86.52 1.00 100.0 86.5 70 130

Sample ID: <b>1710G51-011AMS</b>	Client ID:	Units: <b>ug/L</b>	Prep Date: <b>10/20/2017</b>	Run No: <b>355072</b>							
SampleType: <b>MS</b>	TestCode: <b>Trace Elements by ICP/MS E200.8</b>	BatchID: <b>250260</b>	Analysis Date: <b>10/24/2017</b>	Seq No: <b>7816282</b>							
Analyte	Result	RPT Limit	SPK value	SPK Ref Val	%REC	Low Limit	High Limit	RPD Ref Val	%RPD	RPD Limit	Qual

Lead 83.39 1.00 100.0 0.3939 83.0 70 130

Sample ID: <b>1710G51-001AMSD</b>	Client ID:	Units: <b>ug/L</b>	Prep Date: <b>10/20/2017</b>	Run No: <b>355072</b>							
SampleType: <b>MSD</b>	TestCode: <b>Trace Elements by ICP/MS E200.8</b>	BatchID: <b>250260</b>	Analysis Date: <b>10/24/2017</b>	Seq No: <b>7816280</b>							
Analyte	Result	RPT Limit	SPK value	SPK Ref Val	%REC	Low Limit	High Limit	RPD Ref Val	%RPD	RPD Limit	Qual

Lead 84.71 1.00 100.0 84.7 70 130 86.52 2.11 20

**Qualifiers:** > Greater than Result value < Less than Result value B Analyte detected in the associated method blank  
 BRL Below reporting limit E Estimated (value above quantitation range) H Holding times for preparation or analysis exceeded  
 J Estimated value detected below Reporting Limit N Analyte not NELAC certified R RPD outside limits due to matrix  
 Rpt Lim Reporting Limit S Spike Recovery outside limits due to matrix

**Client:** Atlanta Environmental Mgmt  
**Project Name:** DCSD - 0101  
**Workorder:** 1710G77

**ANALYTICAL QC SUMMARY REPORT**

**BatchID: 250263**

Sample ID: <b>MB-250263</b>	Client ID:	Units: <b>ug/L</b>	Prep Date: <b>10/23/2017</b>	Run No: <b>355149</b>							
SampleType: <b>MBLK</b>	TestCode: <b>Trace Elements by ICP/MS E200.8</b>	BatchID: <b>250263</b>	Analysis Date: <b>10/24/2017</b>	Seq No: <b>7818259</b>							
Analyte	Result	RPT Limit	SPK value	SPK Ref Val	%REC	Low Limit	High Limit	RPD Ref Val	%RPD	RPD Limit	Qual

Lead BRL 1.00

Sample ID: <b>LCS-250263</b>	Client ID:	Units: <b>ug/L</b>	Prep Date: <b>10/23/2017</b>	Run No: <b>355149</b>							
SampleType: <b>LCS</b>	TestCode: <b>Trace Elements by ICP/MS E200.8</b>	BatchID: <b>250263</b>	Analysis Date: <b>10/24/2017</b>	Seq No: <b>7818260</b>							
Analyte	Result	RPT Limit	SPK value	SPK Ref Val	%REC	Low Limit	High Limit	RPD Ref Val	%RPD	RPD Limit	Qual

Lead 103.8 1.00 100.0 104 85 115

Sample ID: <b>1710G51-013AMS</b>	Client ID:	Units: <b>ug/L</b>	Prep Date: <b>10/23/2017</b>	Run No: <b>355149</b>							
SampleType: <b>MS</b>	TestCode: <b>Trace Elements by ICP/MS E200.8</b>	BatchID: <b>250263</b>	Analysis Date: <b>10/24/2017</b>	Seq No: <b>7818263</b>							
Analyte	Result	RPT Limit	SPK value	SPK Ref Val	%REC	Low Limit	High Limit	RPD Ref Val	%RPD	RPD Limit	Qual

Lead 105.3 1.00 100.0 2.998 102 70 130

Sample ID: <b>1710G51-013AMSD</b>	Client ID:	Units: <b>ug/L</b>	Prep Date: <b>10/23/2017</b>	Run No: <b>355149</b>							
SampleType: <b>MSD</b>	TestCode: <b>Trace Elements by ICP/MS E200.8</b>	BatchID: <b>250263</b>	Analysis Date: <b>10/24/2017</b>	Seq No: <b>7818266</b>							
Analyte	Result	RPT Limit	SPK value	SPK Ref Val	%REC	Low Limit	High Limit	RPD Ref Val	%RPD	RPD Limit	Qual

Lead 105.8 1.00 100.0 2.998 103 70 130 105.3 0.506 20

**Qualifiers:** > Greater than Result value < Less than Result value B Analyte detected in the associated method blank  
 BRL Below reporting limit E Estimated (value above quantitation range) H Holding times for preparation or analysis exceeded  
 J Estimated value detected below Reporting Limit N Analyte not NELAC certified R RPD outside limits due to matrix  
 Rpt Lim Reporting Limit S Spike Recovery outside limits due to matrix

**Client:** Atlanta Environmental Mgmt  
**Project Name:** DCSD - 0101  
**Workorder:** 1710G77

**ANALYTICAL QC SUMMARY REPORT**

**BatchID: 250264**

Sample ID: <b>MB-250264</b>	Client ID:	Units: <b>ug/L</b>	Prep Date: <b>10/20/2017</b>	Run No: <b>355066</b>							
SampleType: <b>MBLK</b>	TestCode: <b>Trace Elements by ICP/MS E200.8</b>	BatchID: <b>250264</b>	Analysis Date: <b>10/23/2017</b>	Seq No: <b>7815909</b>							
Analyte	Result	RPT Limit	SPK value	SPK Ref Val	%REC	Low Limit	High Limit	RPD Ref Val	%RPD	RPD Limit	Qual

Lead BRL 1.00

Sample ID: <b>LCS-250264</b>	Client ID:	Units: <b>ug/L</b>	Prep Date: <b>10/20/2017</b>	Run No: <b>355066</b>							
SampleType: <b>LCS</b>	TestCode: <b>Trace Elements by ICP/MS E200.8</b>	BatchID: <b>250264</b>	Analysis Date: <b>10/24/2017</b>	Seq No: <b>7817518</b>							
Analyte	Result	RPT Limit	SPK value	SPK Ref Val	%REC	Low Limit	High Limit	RPD Ref Val	%RPD	RPD Limit	Qual

Lead 100.9 1.00 100.0 101 85 115

Sample ID: <b>1710G77-006AMS</b>	Client ID: <b>0101-101817-CS-005-B</b>	Units: <b>ug/L</b>	Prep Date: <b>10/20/2017</b>	Run No: <b>355066</b>							
SampleType: <b>MS</b>	TestCode: <b>Trace Elements by ICP/MS E200.8</b>	BatchID: <b>250264</b>	Analysis Date: <b>10/23/2017</b>	Seq No: <b>7815912</b>							
Analyte	Result	RPT Limit	SPK value	SPK Ref Val	%REC	Low Limit	High Limit	RPD Ref Val	%RPD	RPD Limit	Qual

Lead 99.61 1.00 100.0 0.6051 99.0 70 130

Sample ID: <b>1710G77-016AMS</b>	Client ID: <b>0101-101817-DF-007-B</b>	Units: <b>ug/L</b>	Prep Date: <b>10/20/2017</b>	Run No: <b>355066</b>							
SampleType: <b>MS</b>	TestCode: <b>Trace Elements by ICP/MS E200.8</b>	BatchID: <b>250264</b>	Analysis Date: <b>10/23/2017</b>	Seq No: <b>7815937</b>							
Analyte	Result	RPT Limit	SPK value	SPK Ref Val	%REC	Low Limit	High Limit	RPD Ref Val	%RPD	RPD Limit	Qual

Lead 99.47 1.00 100.0 1.155 98.3 70 130

Sample ID: <b>1710G77-006AMSD</b>	Client ID: <b>0101-101817-CS-005-B</b>	Units: <b>ug/L</b>	Prep Date: <b>10/20/2017</b>	Run No: <b>355066</b>							
SampleType: <b>MSD</b>	TestCode: <b>Trace Elements by ICP/MS E200.8</b>	BatchID: <b>250264</b>	Analysis Date: <b>10/23/2017</b>	Seq No: <b>7815935</b>							
Analyte	Result	RPT Limit	SPK value	SPK Ref Val	%REC	Low Limit	High Limit	RPD Ref Val	%RPD	RPD Limit	Qual

Lead 101.8 1.00 100.0 0.6051 101 70 130 99.61 2.13 20

**Qualifiers:** > Greater than Result value < Less than Result value B Analyte detected in the associated method blank  
 BRL Below reporting limit E Estimated (value above quantitation range) H Holding times for preparation or analysis exceeded  
 J Estimated value detected below Reporting Limit N Analyte not NELAC certified R RPD outside limits due to matrix  
 Rpt Lim Reporting Limit S Spike Recovery outside limits due to matrix



**Client:** Atlanta Environmental Mgmt  
**Project Name:** DCSD - 0101  
**Workorder:** 1710G77

**ANALYTICAL QC SUMMARY REPORT**

**BatchID: 250265**

Sample ID: <b>MB-250265</b>	Client ID:	Units: <b>ug/L</b>	Prep Date: <b>10/20/2017</b>	Run No: <b>355176</b>							
SampleType: <b>MBLK</b>	TestCode: <b>Trace Elements by ICP/MS E200.8</b>	BatchID: <b>250265</b>	Analysis Date: <b>10/24/2017</b>	Seq No: <b>7819269</b>							
Analyte	Result	RPT Limit	SPK value	SPK Ref Val	%REC	Low Limit	High Limit	RPD Ref Val	%RPD	RPD Limit	Qual

Lead BRL 1.00

Sample ID: <b>LCS-250265</b>	Client ID:	Units: <b>ug/L</b>	Prep Date: <b>10/20/2017</b>	Run No: <b>355176</b>							
SampleType: <b>LCS</b>	TestCode: <b>Trace Elements by ICP/MS E200.8</b>	BatchID: <b>250265</b>	Analysis Date: <b>10/24/2017</b>	Seq No: <b>7819270</b>							
Analyte	Result	RPT Limit	SPK value	SPK Ref Val	%REC	Low Limit	High Limit	RPD Ref Val	%RPD	RPD Limit	Qual

Lead 103.8 1.00 100.0 104 85 115

Sample ID: <b>1710G77-019AMS</b>	Client ID: <b>0101-101817-DF-017-A</b>	Units: <b>ug/L</b>	Prep Date: <b>10/20/2017</b>	Run No: <b>355176</b>							
SampleType: <b>MS</b>	TestCode: <b>Trace Elements by ICP/MS E200.8</b>	BatchID: <b>250265</b>	Analysis Date: <b>10/25/2017</b>	Seq No: <b>7820238</b>							
Analyte	Result	RPT Limit	SPK value	SPK Ref Val	%REC	Low Limit	High Limit	RPD Ref Val	%RPD	RPD Limit	Qual

Lead 96.30 1.00 100.0 96.3 70 130

Sample ID: <b>1710G77-019AMSD</b>	Client ID: <b>0101-101817-DF-017-A</b>	Units: <b>ug/L</b>	Prep Date: <b>10/20/2017</b>	Run No: <b>355176</b>							
SampleType: <b>MSD</b>	TestCode: <b>Trace Elements by ICP/MS E200.8</b>	BatchID: <b>250265</b>	Analysis Date: <b>10/24/2017</b>	Seq No: <b>7819277</b>							
Analyte	Result	RPT Limit	SPK value	SPK Ref Val	%REC	Low Limit	High Limit	RPD Ref Val	%RPD	RPD Limit	Qual

Lead 97.90 1.00 100.0 97.9 70 130 96.30 1.64 20

**Qualifiers:** > Greater than Result value < Less than Result value B Analyte detected in the associated method blank  
 BRL Below reporting limit E Estimated (value above quantitation range) H Holding times for preparation or analysis exceeded  
 J Estimated value detected below Reporting Limit N Analyte not NELAC certified R RPD outside limits due to matrix  
 Rpt Lim Reporting Limit S Spike Recovery outside limits due to matrix