



February 9, 2017

Via E-Mail: Joshua_I_williams@dekalbschoolsga.org

Mr. Joshua L. Williams, MBA, MSM, PMP
Chief Operations Officer
DeKalb County School District
Operations Division
Sam Moss Service Center
1780 Montreal Road
Tucker, Georgia 30084

**Re: Lead in Drinking Water Sample Results
Clarkston High School (Facility ID #4053)
618 North Indian Creek Dr., Clarkston, Georgia 30021
AEM Project No. 1561-1601**

Dear Mr. Williams:

Atlanta Environmental Management, Inc. (AEM) is pleased to provide the DeKalb County School District (DCSD) an electronic copy of the Lead in Drinking Water Sample Results for Clarkston High School (Facility ID #4053). Samples were collected on January 24, 2017, and analytical results were received from Analytical Environmental Services, Inc., on February 7, 2017.

FINDINGS

AEM collected 55 drinking water samples from 28 sources at Clarkston High School (Facility ID #4053), including two duplicate samples. A description of the drinking water outlets sampled and a summary of sample analytical results are provided in the attached table.

None of the samples collected and analyzed contained lead at a concentration equal to or above EPA's action level of 15 parts per billion.

We appreciate your selection of AEM for this project. If you have any questions, please do not hesitate to contact us.

Sincerely,

Atlanta Environmental Management, Inc.

Leona Miles, CHMM
Senior Project Manager

Janet T. Hart
President

/krf

cc: Daniel Drake (DCSD)
Tracee Hill (DCSD)
Sandra Glen (DeKalb County Watershed Management)
Ryan Cira (DeKalb Board of Health)

Attachment: Table

Table 1. Summary of Lead in Drinking Water Laboratory Analytical Results

Clarkston High School

618 North Indian Creek Drive, Clarkston, GA 30021



Sample ID*	Sample Location Description	Sample Date & Time	Lead Test Results (ppb)
4053-012417-DF-001-A	Initial Draw Sample; Upper Left Elkay Drinking Fountain in Hallway by Girl's RR 108.2; Wall-mounted	01/24/17 5:44 AM	None Detected
4053-012417-DF-001-B	Flush Sample; Upper Left Elkay Drinking Fountain in Hallway by Girl's RR 108.2; Wall-mounted	01/24/17 5:45 AM	None Detected
4053-012417-DF-002-A	Initial Draw Sample; Lower Right Elkay Drinking Fountain in Hallway by Girl's RR 108.2; Wall-mounted	01/24/17 5:46 AM	None Detected
4053-012417-DF-002-B	Flush Sample; Lower Right Elkay Drinking Fountain in Hallway by Girl's RR 108.2; Wall-mounted	01/24/17 5:47 AM	None Detected
4053-012417-DF-003-A	Initial Draw Sample; Lower Left Elkay Drinking Fountain in Hallway next to Girl's RR 127.3; Wall-mounted. Very low water pressure.	01/24/17 5:48 AM	1.73
4053-012417-DF-003-B	Flush Sample; Lower Left Elkay Drinking Fountain in Hallway next to Girl's RR 127.3; Wall-mounted. Very low water pressure.	01/24/17 5:49 AM	1.68
4053-012417-DF-004-A	Initial Draw Sample; Upper Right Elkay Drinking Fountain in Hallway next to Girl's RR 127.3; Wall-mounted	01/24/17 5:50 AM	None Detected
4053-012417-DF-004-B	Flush Sample; Upper Right Elkay Drinking Fountain in Hallway next to Girl's RR 127.3; Wall-mounted	01/24/17 5:51 AM	None Detected
4053-012417-DF-006-A	Initial Draw Sample; Elkay Drinking Fountain in Hallway next to Custodian Closet across from Rm 134	01/24/17 5:30 AM	2.34
4053-012417-DF-006-B	Flush Sample; Elkay Drinking Fountain in Hallway next to Custodian Closet across from Rm 134	01/24/17 5:31 AM	1.75
4053-012417-DF-007-A	Initial Draw Sample; Elkay Drinking Fountain in Cafeteria Rm 143 Left of Serving Line; Wall-mounted	01/24/17 5:15 AM	1.25
4053-012417-DF-007-B	Flush Sample; Elkay Drinking Fountain in Cafeteria Rm 143 Left of Serving Line; Wall-mounted	01/24/17 5:16 AM	1.22
4053-012417-DF-008-A	Initial Draw Sample; Single Elkay Drinking Fountain in Hallway to left of Office 142.6; Wall-mounted	01/24/17 5:54 AM	None Detected
4053-012417-DF-008-B	Flush Sample; Single Elkay Drinking Fountain in Hallway to left of Office 142.6; Wall-mounted	01/24/17 5:55 AM	None Detected

Table 1. Summary of Lead in Drinking Water Laboratory Analytical Results

Clarkston High School

618 North Indian Creek Drive, Clarkston, GA 30021



Sample ID*	Sample Location Description	Sample Date & Time	Lead Test Results (ppb)
4053-012417-DF-009-A	Initial Draw Sample; Single Elkay Drinking Fountain in Hallway next to Boy's Locker Rm; Wall-mounted	01/24/17 5:40 AM	None Detected
4053-012417-DF-009-B	Flush Sample; Single Elkay Drinking Fountain in Hallway next to Boy's Locker Rm; Wall-mounted	01/24/17 5:41 AM	None Detected
4053-012417-DF-010-A	Initial Draw Sample; Lower Right Elkay Drinking Fountain in Hallway across from Rm 21; Wall-mounted	01/24/17 5:29 AM	None Detected
4053-012417-DF-010-B	Flush Sample; Lower Right Elkay Drinking Fountain in Hallway across from Rm 21; Wall-mounted	01/24/17 5:30 AM	None Detected
4053-012417-DF-011-A	Initial Draw Sample; Upper Left Elkay Drinking Fountain in Hallway across from Rm 21; Wall-mounted	01/24/17 5:31 AM	None Detected
4053-012417-DF-011-B	Flush Sample; Upper Left Elkay Drinking Fountain in Hallway across from Rm 21; Wall-mounted	01/24/17 5:32 AM	None Detected
4053-012417-DF-012-A	Initial Draw Sample; Upper Right Elkay Drinking Fountain by RR across from Rm 15; Wall-mounted	01/24/17 5:15 AM	None Detected
4053-012417-DF-012-B	Flush Sample; Upper Right Elkay Drinking Fountain by RR across from Rm 15; Wall-mounted	01/24/17 5:16 AM	None Detected
4053-012417-DF-014-A	Initial Draw Sample; Single Elkay Drinking Fountain by Left Building Entrance in front of Gym; Wall-mounted	01/24/17 5:06 AM	None Detected
4053-012417-DF-014-B	Flush Sample; Single Elkay Drinking Fountain by Left Building Entrance in front of Gym; Wall-mounted	01/24/17 5:07 AM	None Detected
4053-012417-DF-015-A	Initial Draw Sample; Single Elkay Drinking Fountain by Right Building Entrance in front of Gym; Wall-mounted	01/24/17 5:08 AM	7.06
4053-012417-DF-015-B	Flush Sample; Single Elkay Drinking Fountain by Right Building Entrance in front of Gym; Wall-mounted	01/24/17 5:09 AM	7.15
4053-012417-DF-016-A	Initial Draw Sample; Lower Left Elkay Drinking Fountain in Hallway Outside of Health Rm 216; Wall-mounted	01/24/17 5:23 AM	None Detected
4053-012417-DF-016-B	Flush Sample; Lower Left Elkay Drinking Fountain in Hallway Outside of Health Rm 216; Wall-mounted	01/24/17 5:24 AM	None Detected

Table 1. Summary of Lead in Drinking Water Laboratory Analytical Results

Clarkston High School

618 North Indian Creek Drive, Clarkston, GA 30021



Sample ID*	Sample Location Description	Sample Date & Time	Lead Test Results (ppb)
4053-012417-DF-018-A	Initial Draw Sample; Lower Right Elkay Drinking Fountain in Hallway around Corner from Custodian Rm 209; Wall-mounted	01/24/17 5:12 AM	None Detected
4053-012417-DF-018-B	Flush Sample; Lower Right Elkay Drinking Fountain in Hallway around Corner from Custodian Rm 209; Wall-mounted	01/24/17 5:13 AM	None Detected
4053-012417-DF-019-A	Initial Draw Sample; Upper Left Elkay Drinking Fountain in Hallway around Corner from Custodian Rm 209; Wall-mounted	01/24/17 5:14 AM	None Detected
4053-012417-DF-019-B	Flush Sample; Upper Left Elkay Drinking Fountain in Hallway around Corner from Custodian Rm 209; Wall-mounted	01/24/17 5:15 AM	None Detected
4053-012417-DF-020-A	Initial Draw Sample; Upper Right Elkay Drinking Fountain in Hallway to Right of Ticket Booth 205.1; Wall-mounted	01/24/17 5:04 AM	None Detected
4053-012417-DF-020-B	Flush Sample; Upper Right Elkay Drinking Fountain in Hallway to Right of Ticket Booth 205.1; Wall-mounted	01/24/17 5:05 AM	None Detected
4053-012417-DF-021-A	Initial Draw Sample; Lower Left Elkay Drinking Fountain in Hallway to Right of Ticket Booth 205.1; Wall-mounted	01/24/17 5:06 AM	None Detected
4053-012417-DF-021-B	Flush Sample; Lower Left Elkay Drinking Fountain in Hallway to Right of Ticket Booth 205.1; Wall-mounted	01/24/17 5:07 AM	None Detected
4053-012417-RS-001-A	Initial Draw Sample; Far Left Sink in Faculty Women's RR next to Rm 116	01/24/17 5:44 AM	None Detected
4053-012417-RS-001-B	Flush Sample; Far Left Sink in Faculty Women's RR next to Rm 116	01/24/17 5:45 AM	None Detected
4053-012417-RS-002-A	Initial Draw Sample; Sink on Far Right in Girl's RR 133.2	01/24/17 5:22 AM	None Detected
4053-012417-RS-002-B	Flush Sample; Sink on Far Right in Girl's RR 133.2	01/24/17 5:23 AM	None Detected
4053-012417-RS-003-A	Initial Draw Sample; Far Left Sink in Boy's Locker Rm RR	01/24/17 5:35 AM	None Detected
4053-012417-RS-003-B	Flush Sample; Far Left Sink in Boy's Locker Rm RR	01/24/17 5:36 AM	None Detected
4053-012417-RS-004-A	Initial Draw Sample; Far Right Sink in Girl's RR around the Corner from Custodian Rm 209	01/24/17 5:17 AM	None Detected
4053-012417-RS-004-B	Flush Sample; Far Right Sink in Girl's RR around the Corner from Custodian Rm 209	01/24/17 5:18 AM	None Detected
4053-012417-TL-001-A	Initial Draw Sample; Sink in Teacher's Lounge RR next to Rm 15	01/24/17 5:21 AM	1.43
4053-012417-TL-001-B	Flush Sample; Sink in Teacher's Lounge RR next to Rm 15	01/24/17 5:23 AM	1.34

Table 1. Summary of Lead in Drinking Water Laboratory Analytical Results

Clarkston High School

618 North Indian Creek Drive, Clarkston, GA 30021



Sample ID*	Sample Location Description	Sample Date & Time	Lead Test Results (ppb)
4053-012417-CS-001-A	Initial Draw Sample; Food Prep Sink in back of Kitchen Rm 141; Sink to Left was Running on Arrival	01/24/17 5:05 AM	None Detected
4053-012417-CS-001-B	Flush Sample; Food Prep Sink in back of Kitchen Rm 141; Sink to Left was Running on Arrival	01/24/17 5:06 AM	None Detected
4053-012417-CS-002-A	Initial Draw Sample; Food Prep Sink in Kitchen to the Left of CS-001	01/24/17 5:07 AM	None Detected
4053-012417-CS-002-B	Flush Sample; Food Prep Sink in Kitchen to the Left of CS-001	01/24/17 5:08 AM	None Detected
4053-012417-IM-001-A	Initial Draw Sample; Scotsman Ice Machine in Kitchen (Rm 141) near Office	01/24/17 5:10 AM	None Detected
4053-012417-IM-002-A	Initial Draw Sample; Ice-o-Matic Ice Machine in Training Rm/Rm 128.14 across from Boy's Locker Rm	01/24/17 5:43 AM	None Detected
4053-012417-SC-001-A	Service Connection Entry into Building	01/24/17 4:54 AM	None Detected

Notes:

ppb-parts per billion

Bold-Exceeds 15 ppb--EPA's Action Level for Lead

* Note--Where "A" and "B" are indicated, AEM collected two samples at each source area location: ("A") initial draw sample; and ("B") after a 30-second flush sample



January 2, 2018

Via E-Mail: Joshua_I_williams@dekalbschoolsga.org

Mr. Joshua L. Williams, MBA, MSM, PMP
Chief Operations Officer
DeKalb County School District
Operations Division
Sam Moss Service Center
1780 Montreal Road
Tucker, Georgia 30084

**Re: Final Technical Lead in Drinking Water Sampling Report
Clarkston High School (Facility ID #4053)
618 North Indian Creek Drive, Clarkston, Georgia 30021
AEM Project No. 1561-1601**

Dear Mr. Williams:

Atlanta Environmental Management, Inc. (AEM) is pleased to provide the DeKalb County School District (DCSD) an electronic copy of the Final Technical Lead in Drinking Water Sampling Report for Clarkston High School (Facility ID #4053).

Initial sampling was conducted on January 24, 2017, and analytical results were received from Analytical Environmental Services, Inc., on February 7, 2017. Additional drinking water samples from select source units were collected on October 20, 2017, and November 7, 2017, and analytical results were received from Analytical Environmental Services, Inc., on November 2, 2017, and November 20, 2017.

FINDINGS

Initial Testing

AEM collected 55 drinking water samples from 28 sources at Clarkston High School (Facility ID #4053), including 2 duplicate samples (see Figure 1). A description of the drinking water outlets sampled and a summary of sample analytical results are provided in the attached table.

Samples were collected in accordance with the Water Sampling Methodology Protocol for DeKalb County School District, dated September 12, 2016. A copy of AEM's Field Sampling Notes is provided in Attachment A.

None of the samples collected and analyzed contained lead at a concentration equal to or above EPA's action level of 15 parts per billion (ppb).

Initial Sample Results of Previously Identified Source Units Not Sampled

During the initial sampling event on January 24, 2017, five source units (CS-003, CS-004, and CS-006 through CS-008) were not initially identified as a drinking water source per the Sampling Protocol. The Sampling Protocol was revised, and out of an abundance of caution it was determined that these source units should be sampled. On October 20, 2017, ten drinking water samples were collected. Note that source CS-005 was determined not to be a drinking water source and was not sampled. None of the samples collected contained lead at a

concentration at or above EPA's action level of 15 ppb. A description of the drinking water outlet sampled and a summary of sample analytical results are provided in Table 1.

Initial Sample Results of Previously Identified Inoperable Source Units

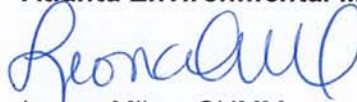
During the initial sampling events on January 24, 2017, four source units (DF-005, DF-013, DF-017, and IM-003) were inoperable and could not be sampled. DCSD made repairs to the inoperable source units and AEM collected five drinking water samples on October 20, 2017 (from DF-005, DF-013, and IM-003) and two drinking water samples on November 7, 2017 (from DF-017).

None of the samples collected and analyzed contained lead at a concentration equal to or above EPA's action level of 15 parts per billion.

We appreciate your selection of AEM for this project. If you have any questions, please do not hesitate to contact us.

Sincerely,

Atlanta Environmental Management, Inc.



Leona Miles, CHMM
Senior Project Manager



Janet T. Hart
President

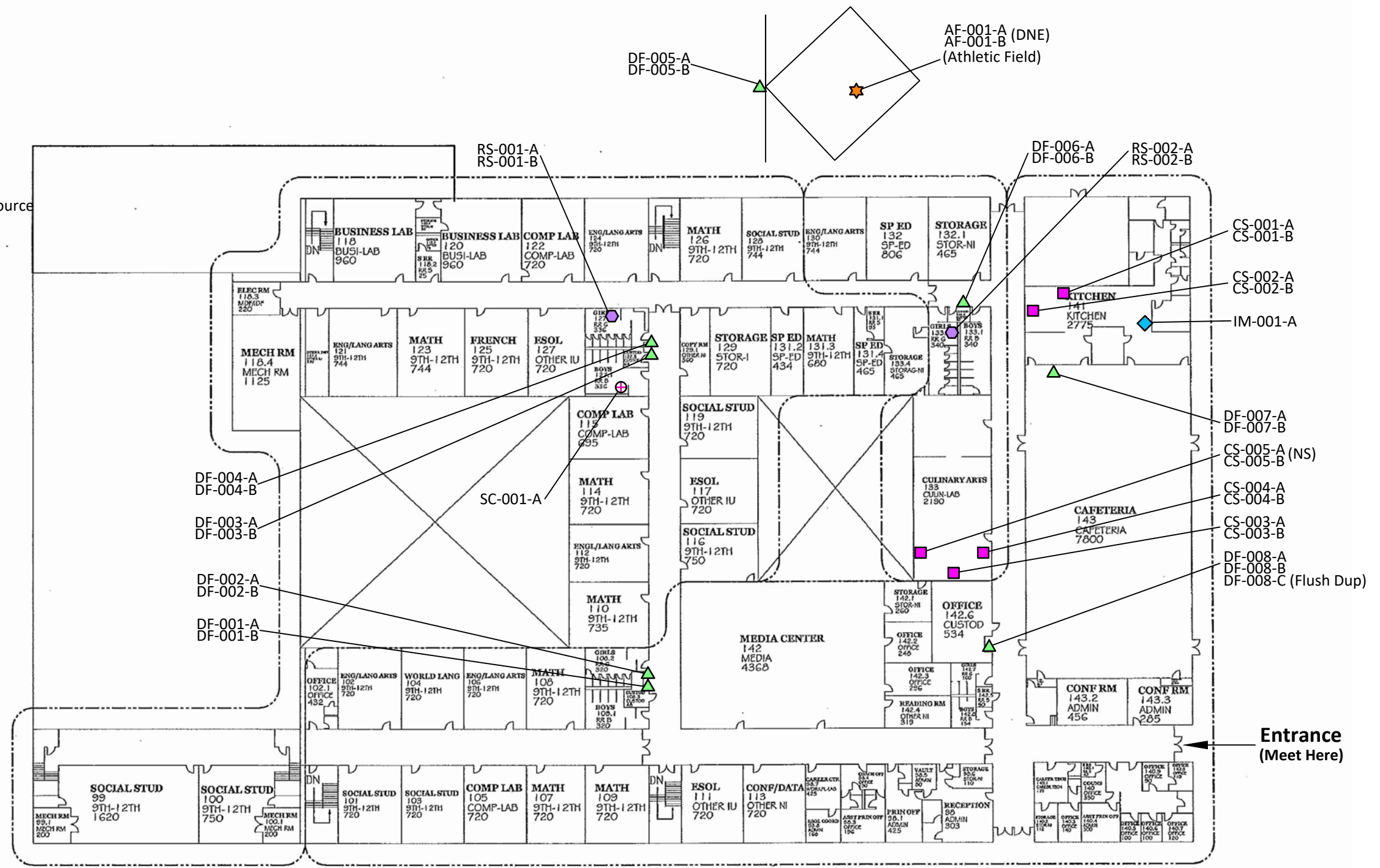
/krf

cc: Daniel Drake (DCSD)
Tracee Hill (DCSD)

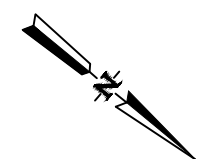
FIGURE


Legend

- - Cafeteria Sink (CS)
- ▲ - Drinking Fountain (DF)
- ◆ - Ice Maker (IM)
- - Kindergarten Sink (KS)
- ★ - Other (OT)
- - Restroom Sink (RS)
- ⊕ - Service Connection (SC)
- ✱ - Teachers Lounge (TL)
- (NS) - Not Sampled; Not a Drinking Water Source
- (DNE) - Does Not Exist



FIRST FLOOR PLAN
NOT TO SCALE



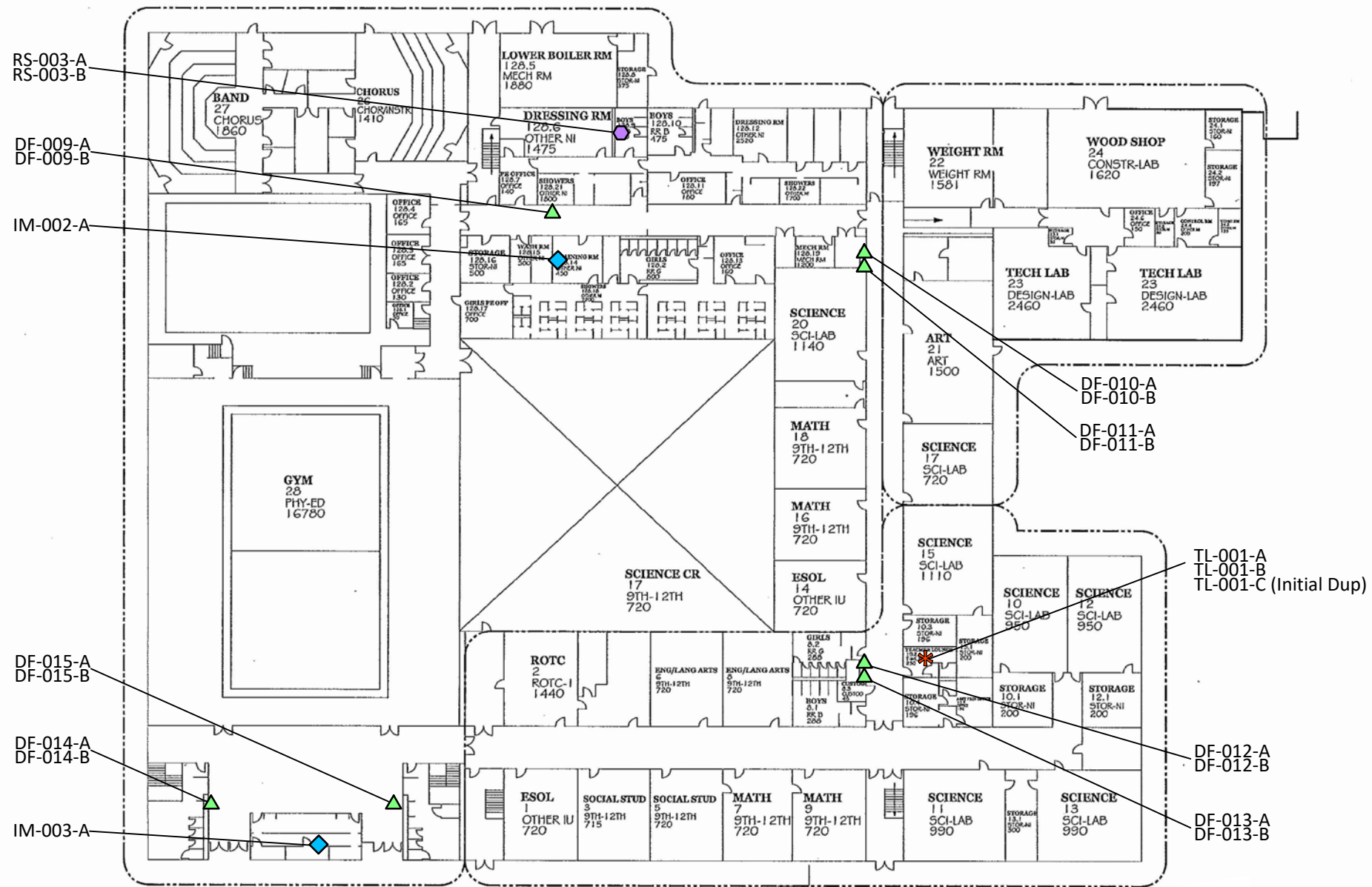
 Atlanta Environmental Management, Inc. Environmental Consulting, Engineering, Hydrogeologic Services 2580 Northeast Expressway • Atlanta, Georgia 30345 Phone: 404.329.9006 • Fax: 404.329.2057			
PROJECT #:	1561-1601-4053	DATE:	December 19, 2017
DRAWN BY:	AL	REVISED:	---
CHECKED BY:	TR	SCALE:	NTS
PROJECT MGR:	LM	PRINTED:	12/19/2017 2:47 PM

Client: DeKalb County School District
 Site Location: Clarkston High Facility (#4053)
 618 North Indian Creek Drive
 Clarkston, GA 30021

<p>Sample Location Plan</p>	<p>Figure 1a</p>
-----------------------------	-----------------------------


Legend

- - Cafeteria Sink (CS)
- ▲ - Drinking Fountain (DF)
- ◆ - Ice Maker (IM)
- - Kindergarten Sink (KS)
- ★ - Other (OT)
- - Restroom Sink (RS)
- ⊕ - Service Connection (SC)
- * - Teachers Lounge (TL)



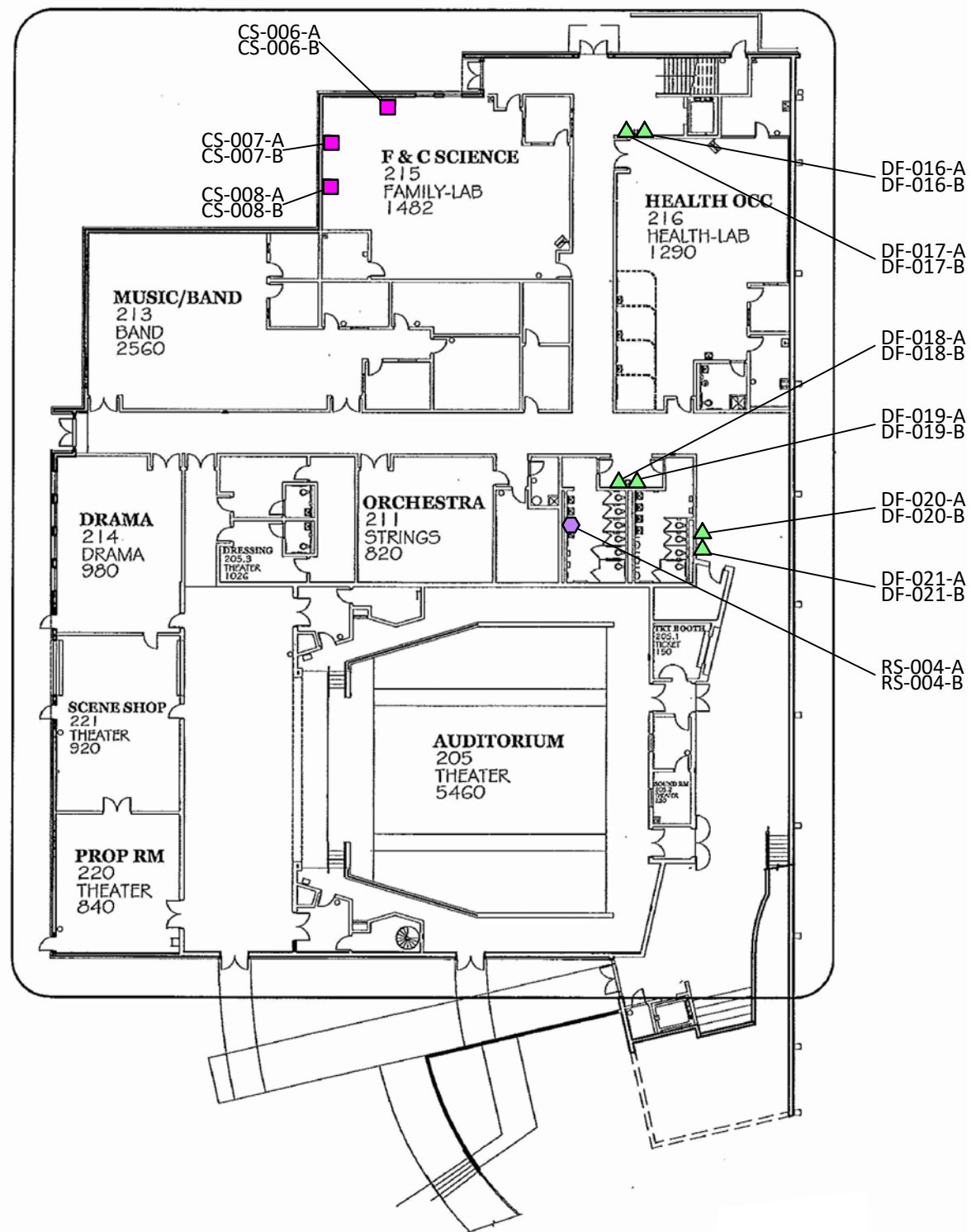
GROUND FLOOR PLAN
NOT TO SCALE



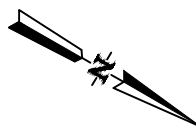
 Atlanta Environmental Management, Inc. Environmental Consulting, Engineering, Hydrogeologic Services 2580 Northeast Expressway • Atlanta, Georgia 30345 Phone: 404.329.9006 • Fax: 404.329.2057		Client: DeKalb County School District Site Location: Clarkston High Facility (#4053) 618 North Indian Creek Drive Clarkston, GA 30021	
PROJECT #:	1561-1601-4053	DATE:	December 19, 2017
DRAWN BY:	AL	REVISED:	---
CHECKED BY:	TR	SCALE:	NTS
PROJECT MGR:	LM	PRINTED:	12/19/2017 2:47 PM
Sample Location Plan			Figure 1b


Legend

- - Cafeteria Sink (CS)
- ▲ - Drinking Fountain (DF)
- ◆ - Ice Maker (IM)
- - Kindergarten Sink (KS)
- ★ - Other (OT)
- - Restroom Sink (RS)
- ⊕ - Service Connection (SC)
- * - Teachers Lounge (TL)



OVERALL FLOOR PLAN
NOT TO SCALE



 Atlanta Environmental Management, Inc. <small>Environmental Consulting, Engineering, Hydrogeologic Services</small> 2580 Northeast Expressway • Atlanta, Georgia 30345 Phone: 404.329.9006 • Fax: 404.329.2057		Client: DeKalb County School District Site Location: Clarkston High Facility (#4053) 618 North Indian Creek Drive Clarkston, GA 30021	
PROJECT #:	1561-1601-4053	DATE:	December 19, 2017
DRAWN BY:	AL	REVISED:	----
CHECKED BY:	TR	SCALE:	NTS
PROJECT MGR:	LM	PRINTED:	12/19/2017 2:47 PM
Sample Location Plan			Figure 1c
G:\DWG\1561-1601 DeKalb County Schools\4053\4053			

TABLE

Table 1. Summary of Lead in Drinking Water Laboratory Analytical Results

Clarkston High School

618 North Indian Creek Drive, Clarkston, GA 30021



Sample ID*	Sample Location Description	Sample Date & Time	Lead Test Results (ppb)
4053-012417-DF-001-A	Initial Draw Sample; Upper Left Elkay Drinking Fountain in Hallway by Girl's RR 108.2; Wall-mounted	01/24/17 5:44 AM	None Detected
4053-012417-DF-001-B	Flush Sample; Upper Left Elkay Drinking Fountain in Hallway by Girl's RR 108.2; Wall-mounted	01/24/17 5:45 AM	None Detected
4053-012417-DF-002-A	Initial Draw Sample; Lower Right Elkay Drinking Fountain in Hallway by Girl's RR 108.2; Wall-mounted	01/24/17 5:46 AM	None Detected
4053-012417-DF-002-B	Flush Sample; Lower Right Elkay Drinking Fountain in Hallway by Girl's RR 108.2; Wall-mounted	01/24/17 5:47 AM	None Detected
4053-012417-DF-003-A	Initial Draw Sample; Lower Left Elkay Drinking Fountain in Hallway next to Girl's RR 127.3; Wall-mounted. Very low water pressure.	01/24/17 5:48 AM	1.73
4053-012417-DF-003-B	Flush Sample; Lower Left Elkay Drinking Fountain in Hallway next to Girl's RR 127.3; Wall-mounted. Very low water pressure.	01/24/17 5:49 AM	1.68
4053-012417-DF-004-A	Initial Draw Sample; Upper Right Elkay Drinking Fountain in Hallway next to Girl's RR 127.3; Wall-mounted	01/24/17 5:50 AM	None Detected
4053-012417-DF-004-B	Flush Sample; Upper Right Elkay Drinking Fountain in Hallway next to Girl's RR 127.3; Wall-mounted	01/24/17 5:51 AM	None Detected
4053-012417-DF-005-A	Not Sampled; No Water at Athletic Field	NS	NS
4053-012417-DF-005-B	Not Sampled; No Water at Athletic Field	NS	NS
4053-102017-DF-005-A	Initial Draw sample; Single Floor Mount Drinking Fountain behind the softball field	10/20/17 6:12 AM	None Detected
4053-102017-DF-005-B	Flush sample; Single Floor Mount Drinking Fountain behind the softball field	10/20/17 6:13 AM	None Detected
4053-012417-DF-006-A	Initial Draw Sample; Elkay Drinking Fountain in Hallway next to Custodian Closet across from Rm 134	01/24/17 5:30 AM	2.34
4053-012417-DF-006-B	Flush Sample; Elkay Drinking Fountain in Hallway next to Custodian Closet across from Rm 134	01/24/17 5:31 AM	1.75
4053-012417-DF-007-A	Initial Draw Sample; Elkay Drinking Fountain in Cafeteria Rm 143 Left of Serving Line; Wall-mounted	01/24/17 5:15 AM	1.25
4053-012417-DF-007-B	Flush Sample; Elkay Drinking Fountain in Cafeteria Rm 143 Left of Serving Line; Wall-mounted	01/24/17 5:16 AM	1.22
4053-012417-DF-008-A	Initial Draw Sample; Single Elkay Drinking Fountain in Hallway to left of Office 142.6; Wall-mounted	01/24/17 5:54 AM	None Detected

Table 1. Summary of Lead in Drinking Water Laboratory Analytical Results

Clarkston High School

618 North Indian Creek Drive, Clarkston, GA 30021



Sample ID*	Sample Location Description	Sample Date & Time	Lead Test Results (ppb)
4053-012417-DF-008-B	Flush Sample; Single Elkay Drinking Fountain in Hallway to left of Office 142.6; Wall-mounted	01/24/17 5:55 AM	None Detected
4053-012417-DF-008-C	Flush Sample Duplicate; Single Elkay Drinking Fountain in Hallway to left of Office 142.6; Wall-mounted	01/24/17 5:56 AM	None Detected
4053-012417-DF-009-A	Initial Draw Sample; Single Elkay Drinking Fountain in Hallway next to Boy's Locker Rm; Wall-mounted	01/24/17 5:40 AM	None Detected
4053-012417-DF-009-B	Flush Sample; Single Elkay Drinking Fountain in Hallway next to Boy's Locker Rm; Wall-mounted	01/24/17 5:41 AM	None Detected
4053-012417-DF-010-A	Initial Draw Sample; Lower Right Elkay Drinking Fountain in Hallway across from Rm 21; Wall-mounted	01/24/17 5:29 AM	None Detected
4053-012417-DF-010-B	Flush Sample; Lower Right Elkay Drinking Fountain in Hallway across from Rm 21; Wall-mounted	01/24/17 5:30 AM	None Detected
4053-012417-DF-011-A	Initial Draw Sample; Upper Left Elkay Drinking Fountain in Hallway across from Rm 21; Wall-mounted	01/24/17 5:31 AM	None Detected
4053-012417-DF-011-B	Flush Sample; Upper Left Elkay Drinking Fountain in Hallway across from Rm 21; Wall-mounted	01/24/17 5:32 AM	None Detected
4053-012417-DF-012-A	Initial Draw Sample; Upper Right Elkay Drinking Fountain by RR across from Rm 15; Wall-mounted	01/24/17 5:15 AM	None Detected
4053-012417-DF-012-B	Flush Sample; Upper Right Elkay Drinking Fountain by RR across from Rm 15; Wall-mounted	01/24/17 5:16 AM	None Detected
4053-012417-DF-013-A	Not Sampled; Lower Left Elkay Drinking Fountain by RR across from Rm 15; Wall-mounted; Inoperable	NS	NS
4053-012417-DF-013-B	Not Sampled; Lower Left Elkay Drinking Fountain by RR across from Rm 15; Wall-mounted; Inoperable	NS	NS
4053-102017-DF-013-A	Initial Draw sample; Lower Left Elkay Drinking Fountain by RR across from Rm 15; Wall-mounted	10/20/17 5:47 AM	None Detected
4053-102017-DF-013-B	Flush sample; Lower Left Elkay Drinking Fountain by RR across from Rm 15; Wall-mounted	10/20/17 5:48 AM	None Detected
4053-012417-DF-014-A	Initial Draw Sample; Single Elkay Drinking Fountain by Left Building Entrance in front of Gym; Wall-mounted	01/24/17 5:06 AM	None Detected

Table 1. Summary of Lead in Drinking Water Laboratory Analytical Results**Clarkston High School****618 North Indian Creek Drive, Clarkston, GA 30021**

Sample ID*	Sample Location Description	Sample Date & Time	Lead Test Results (ppb)
4053-012417-DF-014-B	Flush Sample; Single Elkay Drinking Fountain by Left Building Entrance in front of Gym; Wall-mounted	01/24/17 5:07 AM	None Detected
4053-012417-DF-015-A	Initial Draw Sample; Single Elkay Drinking Fountain by Right Building Entrance in front of Gym; Wall-mounted	01/24/17 5:08 AM	7.06
4053-012417-DF-015-B	Flush Sample; Single Elkay Drinking Fountain by Right Building Entrance in front of Gym; Wall-mounted	01/24/17 5:09 AM	7.15
4053-012417-DF-016-A	Initial Draw Sample; Lower Left Elkay Drinking Fountain in Hallway Outside of Health Rm 216; Wall-mounted	01/24/17 5:23 AM	None Detected
4053-012417-DF-016-B	Flush Sample; Lower Left Elkay Drinking Fountain in Hallway Outside of Health Rm 216; Wall-mounted	01/24/17 5:24 AM	None Detected
4053-012417-DF-017-A	Not Sampled; Upper Right Elkay Drinking Fountain in Hallway Outside of Health Rm 216; Wall-mounted; Inoperable	NS	NS
4053-012417-DF-017-B	Not Sampled; Upper Right Elkay Drinking Fountain in Hallway Outside of Health Rm 216; Wall-mounted; Inoperable	NS	NS
4053-110717-DF-017-A	Initial Draw sample; Upper Right Elkay Drinking Fountain in Hallway Outside of Health Rm 216; Wall-mounted	11/7/17 5:19 AM	None Detected
4053-110717-DF-017-B	Flush sample; Upper Right Elkay Drinking Fountain in Hallway Outside of Health Rm 216; Wall-mounted	11/7/17 5:20 AM	None Detected
4053-012417-DF-018-A	Initial Draw Sample; Lower Right Elkay Drinking Fountain in Hallway around Corner from Custodian Rm 209; Wall-mounted	01/24/17 5:12 AM	None Detected
4053-012417-DF-018-B	Flush Sample; Lower Right Elkay Drinking Fountain in Hallway around Corner from Custodian Rm 209; Wall-mounted	01/24/17 5:13 AM	None Detected
4053-012417-DF-019-A	Initial Draw Sample; Upper Left Elkay Drinking Fountain in Hallway around Corner from Custodian Rm 209; Wall-mounted	01/24/17 5:14 AM	None Detected
4053-012417-DF-019-B	Flush Sample; Upper Left Elkay Drinking Fountain in Hallway around Corner from Custodian Rm 209; Wall-mounted	01/24/17 5:15 AM	None Detected
4053-012417-DF-020-A	Initial Draw Sample; Upper Right Elkay Drinking Fountain in Hallway to Right of Ticket Booth 205.1; Wall-mounted	01/24/17 5:04 AM	None Detected
4053-012417-DF-020-B	Flush Sample; Upper Right Elkay Drinking Fountain in Hallway to Right of Ticket Booth 205.1; Wall-mounted	01/24/17 5:05 AM	None Detected

Table 1. Summary of Lead in Drinking Water Laboratory Analytical Results

Clarkston High School

618 North Indian Creek Drive, Clarkston, GA 30021



Sample ID*	Sample Location Description	Sample Date & Time	Lead Test Results (ppb)
4053-012417-DF-021-A	Initial Draw Sample; Lower Left Elkay Drinking Fountain in Hallway to Right of Ticket Booth 205.1; Wall-mounted	01/24/17 5:06 AM	None Detected
4053-012417-DF-021-B	Flush Sample; Lower Left Elkay Drinking Fountain in Hallway to Right of Ticket Booth 205.1; Wall-mounted	01/24/17 5:07 AM	None Detected
4053-012417-RS-001-A	Initial Draw Sample; Far Left Sink in Faculty Women's RR next to Rm 116	01/24/17 5:44 AM	None Detected
4053-012417-RS-001-B	Flush Sample; Far Left Sink in Faculty Women's RR next to Rm 116	01/24/17 5:45 AM	None Detected
4053-012417-RS-002-A	Initial Draw Sample; Sink on Far Right in Girl's RR 133.2	01/24/17 5:22 AM	None Detected
4053-012417-RS-002-B	Flush Sample; Sink on Far Right in Girl's RR 133.2	01/24/17 5:23 AM	None Detected
4053-012417-RS-003-A	Initial Draw Sample; Far Left Sink in Boy's Locker Rm RR	01/24/17 5:35 AM	None Detected
4053-012417-RS-003-B	Flush Sample; Far Left Sink in Boy's Locker Rm RR	01/24/17 5:36 AM	None Detected
4053-012417-RS-004-A	Initial Draw Sample; Far Right Sink in Girl's RR around the Corner from Custodian Rm 209	01/24/17 5:17 AM	None Detected
4053-012417-RS-004-B	Flush Sample; Far Right Sink in Girl's RR around the Corner from Custodian Rm 209	01/24/17 5:18 AM	None Detected
4053-012417-TL-001-A	Initial Draw Sample; Sink in Teacher's Lounge RR next to Rm 15	01/24/17 5:21 AM	1.43
4053-012417-TL-001-B	Flush Sample; Sink in Teacher's Lounge RR next to Rm 15	01/24/17 5:23 AM	1.34
4053-012417-TL-001-C	Initial Sample Duplicate; Sink in Teacher's Lounge RR next to Rm 15	01/24/17 5:22 AM	1.38
4053-012417-CS-001-A	Initial Draw Sample; Food Prep Sink in back of Kitchen Rm 141; Sink to Left was Running on Arrival	01/24/17 5:05 AM	None Detected
4053-012417-CS-001-B	Flush Sample; Food Prep Sink in back of Kitchen Rm 141; Sink to Left was Running on Arrival	01/24/17 5:06 AM	None Detected
4053-012417-CS-002-A	Initial Draw Sample; Food Prep Sink in Kitchen to the Left of CS-001	01/24/17 5:07 AM	None Detected
4053-012417-CS-002-B	Flush Sample; Food Prep Sink in Kitchen to the Left of CS-001	01/24/17 5:08 AM	None Detected
4053-102017-CS-003-A	Initial Draw Sample; Sink labeled "Protein Sink" on the left wall; Rm 133	10/20/17 5:31 AM	None Detected
4053-102017-CS-003-B	Flush Sample; Sink labeled "Protein Sink" on the left wall; Rm 133	10/20/17 5:32 AM	None Detected
4053-102017-CS-004-A	Initial Draw Sample; Sink labeled "Vegetable Sink" on front wall to the left of the entrance; Rm 133	10/20/17 5:33 AM	None Detected
4053-102017-CS-004-B	Flush Sample; Sink labeled "Vegetable Sink" on front wall to the left of the entrance; Rm 133	10/20/17 5:34 AM	None Detected
4053-102017-CS-005-A	Not sampled; Sink is not used for cooking or drinking water purposes	--	--
4053-102017-CS-005-B	Not sampled; Sink is not used for cooking or drinking water purposes	--	--

Table 1. Summary of Lead in Drinking Water Laboratory Analytical Results

Clarkston High School

618 North Indian Creek Drive, Clarkston, GA 30021



Sample ID*	Sample Location Description	Sample Date & Time	Lead Test Results (ppb)
4053-102017-CS-006-A	Initial Draw Sample; Left sink on back wall; Rm 215	10/20/17 2:18 PM	None Detected
4053-102017-CS-006-B	Flush Sample; Left sink on back wall; Rm 215	10/20/17 5:59 AM	None Detected
4053-102017-CS-007-A	Initial Draw Sample; Right sink near corner on the back wall; Rm 215	10/20/17 6:00 AM	None Detected
4053-102017-CS-007-B	Flush Sample; Right sink near corner on the back wall; Rm 215	10/20/17 6:01 AM	None Detected
4053-102017-CS-008-A	Initial Draw Sample; Only sink on the right wall; Rm 215	10/20/17 6:02 AM	None Detected
4053-102017-CS-008-B	Flush Sample; Only sink on the right wall; Rm 215	10/20/17 6:03 AM	None Detected
4053-012417-AF-001-A	Not Sampled; Source Unit Does Not Exist	--	--
4053-012417-AF-001-B	Not Sampled; Source Unit Does Not Exist	--	--
4053-012417-IM-001-A	Initial Draw Sample; Scotsman Ice Machine in Kitchen (Rm 141) near Office	01/24/17 5:10 AM	None Detected
4053-012417-IM-002-A	Initial Draw Sample; Ice-o-Matic Ice Machine in Training Rm/Rm 128.14 across from Boy's Locker Rm	01/24/17 5:43 AM	None Detected
4053-012417-IM-003-A	Not Sampled; Ice-o-Matic Ice Machine in Concession outside of Gym; No Ice	NS	NS
4053-102017-IM-003-A	Initial Draw sample; Ice-o-Matic Ice Machine in Concession outside of Gym	10/20/17 5:41 AM	None Detected
4053-012417-SC-001-A	Service Connection Entry into Building	01/24/17 4:54 AM	None Detected

Notes:

ppb-parts per billion

Bold-Exceeds 15 ppb--EPA's Action Level for Lead

* Note--Where "A" and "B" are indicated, AEM collected two samples at each source area location: ("A") initial draw sample; and ("B") after a 30-second flush sample

(--) Source unit does not exist or was determined to not be a drinking or cooking source

NS-Not sampled; Source unit was inoperable during initial testing on 1/24/17

ATTACHMENT A
AEM Field Sampling Forms

**DEKALB COUNTY SCHOOL DISTRICT
LEAD IN DRINKING WATER FIELD DATA SHEET**

FACILITY NAME: CLARKSTON HIGH FACILITY
ADDRESS: 618 North Indian Creek Drive Clarkston, GA, 30021

FACILITY ID: 4053

DATE	TIME	SAMPLE ID (Facility ID-Date-Location Type-Sequential #-Sample Type)	NEAREST ROOM	LOCATION (circle)	DESCRIPTION	SAMPLER INIT.
1/24/17	0454	4053 - 012417 - SC-001-A	Boys' RR 127.1 (Teacher's only)	In room Hallway	No outlet in Mechanical Room. Nearest outlet in closest restroom	CA
1/24/17	0505	4053 - 012417 - CS-001-A	Kitchen 141	In room Hallway	Wash sink running on arrival. Food prep sink at back of kitchen	↓
1/24/17	0506	4053 - 012417 - CS-001-B	"	In room Hallway		
1/24/17	0507	4053 - 012417 - CS-002-A	"	In room Hallway	Food prep sink to the left of CS-001-A#B	
1/24/17	0508	4053 - 012417 - CS-002-B	"	In room Hallway		
1/24/17	0510	4053 - 012417 - IM-001-A	Kitchen 141	In room Hallway	Ice machine on right in kitchen near kitchen office Scotsman	
1/24/17	0515	4053 - 012417 - DF-007-A	Cafeteria 143	In room Hallway	Wall mounted Elkay near left serving line	
1/24/17	0516	4053 - 012417 - DF-007-B	"	In room Hallway		
1/24/17	0522	4053 - 012417 - RS-002-A	Girls' RR 133.2	In room Hallway	Sink on far right in RR	
1/24/17	0523	4053 - 012417 - RS-002-B	"	In room Hallway		

LOCATION TYPE: AF = athletic field; CS = cafeteria sink; DF = drinking fountain; IM = ice maker; KS = kindergarten sink; RS = restroom sink; SC = service connection; TL = teachers' lounge. SAMPLE TYPE: A = initial draw; B = flush; C = duplicate

**DEKALB COUNTY SCHOOL DISTRICT
LEAD IN DRINKING WATER FIELD DATA SHEET**

FACILITY NAME: CLARKSTON HIGH FACILITY
 ADDRESS: 618 North Indian Creek Drive Clarkston, GA, 30021

FACILITY ID: 4053

DATE	TIME	SAMPLE ID (Facility ID-Date-Location Type-Sequential #-Sample Type)	NEAREST ROOM	LOCATION (circle)	DESCRIPTION	SAMPLER INIT.
1/24/17	0530	4053 - 012417 - DF-006-A	Across from 134 (132.1 on map)	In room Hallway	Wall mounted Elkay next to custodian closet on the right	CS
1/24/17	0531	4053 - 012417 - DF-006-B	"	In room Hallway		↓
1/24/17	0544	4053 - 012417 - RS-001-A	Right of 116 (127.3 on map)	In room Hallway	sink on far left in teacher's only RR (women's)	
1/24/17	0545	4053 - 012417 - RS-001-B		In room Hallway		
1/24/17	0548	4053 - 012417 - DF-003-A	next to women's RR (127.3 on map)	In room Hallway	Lower left Elkay wM very low water pressure	
1/24/17	0549	4053 - 012417 - DF-003-B	"	In room Hallway		
1/24/17	0550	4053 - 012417 - DF-004-A	"	In room Hallway	Upper right Elkay wM	
1/24/17	0551	4053 - 012417 - DF-004-B	"	In room Hallway		
1/24/17		4053 - 012417 -		In room Hallway		
1/24/17		4053 - 012417 -		In room Hallway		

LOCATION TYPE: AF = athletic field; CS = cafeteria sink; DF = drinking fountain; IM = ice maker; KS = kindergarten sink; RS = restroom sink; SC = service connection; TL = teachers' lounge. SAMPLE TYPE: A = initial draw; B = flush; C = duplicate

**DEKALB COUNTY SCHOOL DISTRICT
LEAD IN DRINKING WATER FIELD DATA SHEET**

FACILITY NAME: CLARKSTON HIGH FACILITY
 ADDRESS: 618 North Indian Creek Drive Clarkston, GA, 30021

FACILITY ID: 4053

DATE	TIME	SAMPLE ID (Facility ID-Date-Location Type-Sequential #-Sample Type)	NEAREST ROOM	LOCATION (circle)	DESCRIPTION	SAMPLER INIT.
1/24/17	0521	4053 - 012417 - TL-001-A	Teachers lounge next to	In room Hallway	sink in TL RR. NO other sink in Rm	UH
1/24/17	0523	4053 - 012417 - TL-001-B	"Rm 15"	In room Hallway	" "	UH
1/24/17	0522	4053 - 012417 - TL-001-C	" "	In room Hallway	" initial dup "	UH
1/24/17	0529	4053 - 012417 - DF-010-A	across from Rm 21	In room Hallway	lower right Elkay Wm	UH
1/24/17	0530	4053 - 012417 - DF-010-B	↓	In room Hallway	" "	UH
1/24/17	0531	4053 - 012417 - DF-011-A		In room Hallway	upper left Elkay Wm	UH
1/24/17	0532	4053 - 012417 - DF-011-B	↓	In room Hallway	" "	UH
1/24/17	0535	4053 - 012417 - RS-003-A	Boys locker Rm	In room Hallway	left most sink in Boy's locker Rm RR	UH
1/24/17	0536	4053 - 012417 - RS-003-B	" "	In room Hallway	" "	UH
1/24/17	0543	4053 - 012417 - IM-002-A	Training Rm	In room Hallway	Ice-O-matic in Training Rm across from Boy's locker Rm	UH

LOCATION TYPE: AF = athletic field; CS = cafeteria sink; DF = drinking fountain; IM = ice maker; KS = kindergarten sink; RS = restroom sink; SC = service connection; TL = teachers' lounge. SAMPLE TYPE: A = initial draw; B = flush; C = duplicate

**DEKALB COUNTY SCHOOL DISTRICT
LEAD IN DRINKING WATER FIELD DATA SHEET**

FACILITY NAME: CLARKSTON HIGH FACILITY
 ADDRESS: 618 North Indian Creek Drive Clarkston, GA, 30021

FACILITY ID: 4053

DATE	TIME	SAMPLE ID (Facility ID-Date-Location Type-Sequential #-Sample Type)	NEAREST ROOM	LOCATION (circle)	DESCRIPTION	SAMPLER INIT.
1/24/17	0506	4053 - 012417 - DF-014-A	outside gym	In room Hallway	single Elkay by left building entrance in front of gym	UH
1/24/17	0507	4053 - 012417 - DF-014-B		In room Hallway	" "	UH
1/24/17	0508	4053 - 012417 - DF-015-A		In room Hallway	single Elkay by right building entrance in front of gym.	UH
1/24/17	0509	4053 - 012417 - DF-015-B		In room Hallway	" "	UH
1/24/17	N/A	4053 - 012417 - IM-003-A	concession by gym	In room Hallway	iceomatic not in use/no ice	UH
1/24/17	0515	4053 - 012417 - DF-012-A	Rm 15	In room Hallway	upper right Elkay unit by RR across from Rm 15	UH
1/24/17	0516	4053 - 012417 - DF-012-B		In room Hallway	" "	UH
1/24/17		4053 - 012417 - DF-013-A		In room Hallway	lower left Elkay unit by RR across from Rm 15	UH
1/24/17		4053 - 012417 - DF-013-B		In room Hallway	" inoperable "	UH
1/24/17		4053 - 012417 -		In room Hallway		

LOCATION TYPE: AF = athletic field; CS = cafeteria sink; DF = drinking fountain; IM = ice maker; KS = kindergarten sink; RS = restroom sink; SC = service connection; TL = teachers' lounge. SAMPLE TYPE: A = initial draw; B = flush; C = duplicate

**DEKALB COUNTY SCHOOL DISTRICT
LEAD IN DRINKING WATER FIELD DATA SHEET**

FACILITY NAME: CLARKSTON HIGH FACILITY
 ADDRESS: 618 North Indian Creek Drive Clarkston, GA, 30021

FACILITY ID: 4053

DATE	TIME	SAMPLE ID (Facility ID-Date-Location Type-Sequential #-Sample Type)	NEAREST ROOM	LOCATION (circle)	DESCRIPTION	SAMPLER INIT.
1/24/17	0540	4053 - 012417 - DF-009-A	Boy's locker	In room Hallway	single faucet next to Boy's locker Rm	UH
1/24/17	0541	4053 - 012417 - DF-009-B	" "	In room Hallway	" "	UH
1/24/17		4053 - 012417 -		In room Hallway		
1/24/17		4053 - 012417 -		In room Hallway		
1/24/17		4053 - 012417 -		In room Hallway		
1/24/17		4053 - 012417 -		In room Hallway		
1/24/17		4053 - 012417 -		In room Hallway		
1/24/17		4053 - 012417 -		In room Hallway		
1/24/17		4053 - 012417 -		In room Hallway		
1/24/17		4053 - 012417 -		In room Hallway		

LOCATION TYPE: AF = athletic field; CS = cafeteria sink; DF = drinking fountain; IM = ice maker; KS = kindergarten sink; RS = restroom sink; SC = service connection; TL = teachers' lounge. SAMPLE TYPE: A = initial draw; B = flush; C = duplicate

**DEKALB COUNTY SCHOOL DISTRICT
LEAD IN DRINKING WATER FIELD DATA SHEET**

FACILITY NAME: CLARKSTON HIGH FACILITY
 ADDRESS: 618 North Indian Creek Drive Clarkston, GA, 30021

FACILITY ID: 4053

DATE	TIME	SAMPLE ID (Facility ID-Date-Location Type-Sequential #-Sample Type)	NEAREST ROOM	LOCATION (circle)	DESCRIPTION	SAMPLER INIT.
1/24/17	0504	4053 - 012417 - DF-020-A	to right of ticket booth	In room Hallway	Upper right Elkay DF - WM	KTW
1/24/17	0505	4053 - 012417 - DF-020-B	205.1	In room Hallway	SAA	KTW
1/24/17	0506	4053 - 012417 - DF-021-A	" "	In room Hallway	Lower Left Elkay DF - WM	KTW
1/24/17	0507	4053 - 012417 - DF-021-B	" "	In room Hallway	SAA	KTW
1/24/17	0512	4053 - 012417 - DF-018-A	around corner from custodial Rm 209	In room Hallway	Lower Right Elkay DF - WM	KTW
1/24/17	0513	4053 - 012417 - DF-018-B	" "	In room Hallway	SAA	KTW
1/24/17	0514	4053 - 012417 - DF-019-A	" "	In room Hallway	Upper Left Elkay DF - WM	KTW
1/24/17	0515	4053 - 012417 - DF-019-B	" "	In room Hallway	SAA	KTW
1/24/17	0517	4053 - 012417 - RS-004-A	" "	In room Hallway	Far right sink in girls RR	KTW
1/24/17	0518	4053 - 012417 - RS-004-B	" "	In room Hallway	SAA	KTW

LOCATION TYPE: AF = athletic field; CS = cafeteria sink; DF = drinking fountain; IM = ice maker; KS = kindergarten sink; RS = restroom sink; SC = service connection; TL = teachers' lounge. SAMPLE TYPE: A = initial draw; B = flush; C = duplicate

**DEKALB COUNTY SCHOOL DISTRICT
LEAD IN DRINKING WATER FIELD DATA SHEET**

FACILITY NAME: CLARKSTON HIGH FACILITY
 ADDRESS: 618 North Indian Creek Drive Clarkston, GA, 30021

FACILITY ID: 4053

DATE	TIME	SAMPLE ID (Facility ID-Date-Location Type-Sequential #-Sample Type)	NEAREST ROOM	LOCATION (circle)	DESCRIPTION	SAMPLER INIT.
1/24/17	0523	4053 - 012417 - DF-016-A	Outside of Health OCC Rm 216	In room Hallway	Lower left Elkay DF - WM	KTW
1/24/17	0524	4053 - 012417 - DF-016-B	" "	In room Hallway	SAA	KTW
1/24/17	0525	4053 - 012417 - DF-017-A	" "	In room Hallway	Upper right Elkay DF - WM (Not Sampled!)	KTW
1/24/17	0526	4053 - 012417 - DF-017-B	" "	In room Hallway	SAA (DF inoperable)	KTW
1/24/17	0544	4053 - 012417 - DF-001-A	Outside of girls RR 108.2	In room Hallway	Upper Left Elkay DF - WM	KTW
1/24/17	0545	4053 - 012417 - DF-001-B	" "	In room Hallway	SAA	KTW
1/24/17	0546	4053 - 012417 - DF-002-A	" "	In room Hallway	Lower right Elkay DF - WM	KTW
1/24/17	0547	4053 - 012417 - DF-002-B	" "	In room Hallway	SAA	KTW
1/24/17		4053 - 012417 -	" "	In room Hallway		
1/24/17		4053 - 012417 -	" "	In room Hallway		

LOCATION TYPE: AF = athletic field; CS = cafeteria sink; DF = drinking fountain; IM = ice maker; KS = kindergarten sink; RS = restroom sink; SC = service connection; TL = teachers' lounge. SAMPLE TYPE: A = initial draw; B = flush; C = duplicate

**DEKALB COUNTY SCHOOL DISTRICT
LEAD IN DRINKING WATER FIELD DATA SHEET**

FACILITY NAME: CLARKSTON HIGH FACILITY
 ADDRESS: 618 North Indian Creek Drive Clarkston, GA, 30021

FACILITY ID: 4053

DATE	TIME	SAMPLE ID (Facility ID-Date-Location Type-Sequential #-Sample Type)	NEAREST ROOM	LOCATION (circle)	DESCRIPTION	SAMPLER INIT.
1/24/17	0554	4053 - 012417 - DF-008-A	to left of office 142.6	In room Hallway	Single Elkay DF- um	KTW
1/24/17	0555	4053 - 012417 - DF-008-B	" "	In room Hallway	SAA	KTW
1/24/17	0556	4053 - 012417 - DF-008-C	" "	In room Hallway	SAA Flush dup.	KTW
1/24/17	\	4053 - 012417 - DF-005-A	DF on Athletic field	In room Hallway	Not sampled - inoperable	
1/24/17	\	4053 - 012417 - DF-005-B	" "	In room Hallway	Not sampled - inoperable *water is not ran to AF.	
1/24/17	\	4053 - 012417 - AF-001-A		In room Hallway	per janitor *Does not exist-	
1/24/17	\	4053 - 012417 - AF-001-B		In room Hallway	per janitor	
1/24/17		4053 - 012417 -		In room Hallway		
1/24/17		4053 - 012417 -		In room Hallway		
1/24/17		4053 - 012417 -		In room Hallway		

LOCATION TYPE: AF = athletic field; CS = cafeteria sink; DF = drinking fountain; IM = ice maker; KS = kindergarten sink; RS = restroom sink; SC = service connection; TL = teachers' lounge. SAMPLE TYPE: A = initial draw; B = flush; C = duplicate

**DEKALB COUNTY SCHOOL DISTRICT
LEAD IN DRINKING WATER FIELD DATA SHEET**

FACILITY NAME: CLARKSTON HIGH FACILITY
 ADDRESS: 618 North Indian Creek Drive Clarkston, GA, 30021

FACILITY ID: 4053

DATE	TIME	SAMPLE ID (Facility ID-Date-Location Type-Sequential #-Sample Type)	NEAREST ROOM	LOCATION (circle)	DESCRIPTION	SAMPLER INIT.
10/20/17	0531	4053 - 102017 - CS-003-A	133 Culinary Arts	<u>In room</u> Hallway	Protein sink on right wall	A1
10/20/17	0532	4053 - 102017 - CS-003-B	"	<u>In room</u> Hallway	"	A1
10/20/17	0533	4053 - 102017 - CS-004-A	"	<u>In room</u> Hallway	Vegetable Sinks on front wall to left of door	A1
10/20/17	0534	4053 - 102017 - CS-004-B	"	<u>In room</u> Hallway	"	A1
10/20/17	0541	4053 - 102017 - IM-003-A	Concession stand in Gym lobby	<u>In room</u> Hallway	Ice-omatic IM	A1
10/20/17	0547	4053 - 102017 - DF-013-A	Left of Rm 14	<u>In room</u> Hallway	Lower Left sink w/ DF	A1
10/20/17	0548	4053 - 102017 - DF-013-B	"	<u>In room</u> Hallway	"	A1
10/20/17		4053 - 102017 - CS-005 - A+B	133	<u>In room</u> Hallway	Identified as a rinse sink, Not sampled	A1
10/20/17		4053 - 102017 -		<u>In room</u> Hallway		
10/20/17		4053 - 102017 -		<u>In room</u> Hallway		

LOCATION TYPE: AF = athletic field; CS = cafeteria sink; DF = drinking fountain; IM = ice maker; KS = kindergarten sink; RS = restroom sink; SC = service connection; TL = teachers' lounge. SAMPLE TYPE: A = initial draw; B = flush; C = duplicate

**DEKALB COUNTY SCHOOL DISTRICT
LEAD IN DRINKING WATER FIELD DATA SHEET**

FACILITY NAME: CLARKSTON HIGH FACILITY
 ADDRESS: 618 North Indian Creek Drive Clarkston, GA, 30021

FACILITY ID: 4053

DATE	TIME	SAMPLE ID (Facility ID-Date-Location Type-Sequential #-Sample Type)	NEAREST ROOM	LOCATION (circle)	DESCRIPTION	SAMPLER INIT.
10/20/17	0558	4053 - 102017 - CS-006-A	215	In room Hallway	Left sink on back wall	A1
10/20/17	0559	4053 - 102017 - CS-006-B	"	In room Hallway	"	A1
10/20/17	0600	4053 - 102017 - CS-007-A	"	In room Hallway	Right sink near corner on back wall	A1
10/20/17	0601	4053 - 102017 - CS-007-B	"	In room Hallway	"	A1
10/20/17	0602	4053 - 102017 - CS-008-A	"	In room Hallway	Only sink on Right wall	A1
10/20/17	0603	4053 - 102017 - CS-008-B	"	In room Hallway	"	A1
10/20/17	NS	4053 - 102017 - DF-017-A+B	Outside 216	In room Hallway	NOT sampled; inoperable	A1
10/20/17	0612	4053 - 102017 - DF-005-A	behind Softball Field	In room Hallway	Single floor mount PF	A1
10/20/17	0613	4053 - 102017 - DF-005-B		In room Hallway	"	A1
10/20/17		4053 - 102017 -		In room Hallway		

LOCATION TYPE: AF = athletic field; CS = cafeteria sink; DF = drinking fountain; IM = ice maker; KS = kindergarten sink; RS = restroom sink; SC = service connection; TL = teachers' lounge. SAMPLE TYPE: A = initial draw; B = flush; C = duplicate

**DEKALB COUNTY SCHOOL DISTRICT
LEAD IN DRINKING WATER FIELD DATA SHEET**

FACILITY NAME: CLARKSTON HIGH FACILITY
 ADDRESS: 618 North Indian Creek Drive Clarkston, GA, 30021

FACILITY ID: 4053

DATE	TIME	SAMPLE ID (Facility ID-Date-Location Type-Sequential #-Sample Type)	NEAREST ROOM	LOCATION (circle)	DESCRIPTION	SAMPLER INIT.
11/7/17	0519	4053 - 110717 - DF-017-A	around corner from 216	In room Hallway	upper right Elkay w/m DF	A7
11/7/17	0520	4053 - 110717 - DF-017-B	"	In room Hallway	"	A7
11/7/17		4053 - 110717 -		In room Hallway		
11/7/17		4053 - 110717 -		In room Hallway		
11/7/17		4053 - 110717 -		In room Hallway		
11/7/17		4053 - 110717 -		In room Hallway		
11/7/17		4053 - 110717 -		In room Hallway		
11/7/17		4053 - 110717 -		In room Hallway		
11/7/17		4053 - 110717 -		In room Hallway		
11/7/17		4053 - 110717 -		In room Hallway		

LOCATION TYPE: AF = athletic field; CS = cafeteria sink; DF = drinking fountain; IM = ice maker; KS = kindergarten sink; RS = restroom sink; SC = service connection; TL = teachers' lounge. SAMPLE TYPE: A = initial draw; B = flush; C = duplicate

ATTACHMENT B
AES Laboratory Analytical Report

Leona Miles

From: NoReply@aesatlanta.net
Sent: Tuesday, February 7, 2017 11:18 AM
To: leona-miles@aem-net.com; tim-royer@aem-net.com
Subject: DCSD - 4053
Attachments: 1701J34_REPORT.pdf; 1701J34Invoice.pdf

Please see attached. If you have any questions or need further assistance please contact your project manager at 770-457-8177.

AES Reporting System

ANALYTICAL ENVIRONMENTAL SERVICES, INC.
3080 Presidential Drive ATLANTA, GA 30340
Tel:770-457-8177 Fax:770-457-8188
<http://www.aesatlanta.com>

NOTICE OF CONFIDENTIALITY: The information in this email and / or attachments may be legally privileged and is confidential information intended for the use of the individual or entity named in the email address. If the reader of this message is not the intended recipient, you are hereby notified that any use, dissemination, distribution, or copy of this email and / or attachments is strictly prohibited. If you have received this email in error, please notify Analytical Environmental Services Customer Service by telephone at (770) 457-8177 or by email at info@aesatlanta.com <<mailto:info@aesatlanta.com>> and delete the message. Thank you



February 07, 2017

Leona Miles
Atlanta Environmental Mgmt
2580 NE Expressway
Atlanta GA 30345

TEL: (404) 329-9006
FAX: (404) 329-2057

RE: DCSD - 4053

Dear Leona Miles:

Order No: 1701J34

Analytical Environmental Services, Inc. received 55 samples on 1/24/2017 7:40:00 AM for the analyses presented in following report.

No problems were encountered during the analyses. Additionally, all results for the associated Quality Control samples were within EPA and/or AES established limits. Any discrepancies associated with the analyses contained herein will be noted and submitted in the form of a project Case Narrative.

AES's accreditations are as follows:

- NELAC/Florida State Laboratory ID E87582 for analysis of Non-Potable Water, Solid & Chemical Materials, and Drinking Water Microbiology, effective 07/01/16-06/30/17.
- NELAC/Louisiana Agency Interest No. 100818 for or analysis of Non-Potable Water and Solid & Chemical Materials, effective 07/01/16-06/30/17.
- NELAC/Texas Certificate No. T104704509-16-6 for or analysis of Non-Potable Water and Solid & Chemical Materials, effective 03/01/16-02/28/17.
- AIHA-LAP, LLC Laboratory ID: 100671 for Industrial Hygiene samples (Organics, Metals, PCM Asbestos, Gravimetric), Environmental Lead (Paint, Soil, Dust Wipes, Air), and Environmental Microbiology (Fungal) Direct Examination, effective until 09/01/17.

Ioana Pacurar
Project Manager



ANALYTICAL ENVIRONMENTAL SERVICES, INC

3080 Presidential Drive, Atlanta GA 30340-3704
TEL.: (770) 457-8177 / TOLL-FREE (800) 972-4889 / FAX: (770) 457-8188

CHAIN OF CUSTODY

Work Order: 1701J34

Date: 1/24/2017 Page 1 of 5

Main form containing company details, sample list with columns for sample ID, date, time, grab, composite, matrix, and analysis results. Includes sections for project information, receipt, and special instructions.

MATRIX CODES: A = Air GW = Groundwater SE = Sediment SO = Soil SW = Surface Water DW = Drinking Water W = Water (BlanDF) O = Other (specify)
PRESERVATIVE CODES: H+I = Hydrochloric acid + ice I = Ice only N = Nitric acid S+I = Sulfuric acid + ice S/M+I = Sodium Bisulfate/Methanol + ice O = Other (specify) NA = None



ANALYTICAL ENVIRONMENTAL SERVICES, INC

3080 Presidential Drive, Atlanta GA 30340-3704

TEL.: (770) 457-8177 / TOLL-FREE (800) 972-4888 / FAX: (770) 457-8188

CHAIN OF CUSTODY

Work Order: 1701J34

Date: 1/24/17 Page 2 of 5

COMPANY: Atlanta Environmental Management, Inc		ADDRESS: 2580 Northeast Expressway, NE Atlanta, GA 30345					ANALYSIS REQUESTED												Visit our website www.aesatlanta.com to check on the status of your results, place bottle orders, etc.		No # of Containers	
PHONE: (404) 329-9006		FAX: (404) 329-2057					PRESERVATION (See codes)															
SAMPLED BY: <i>Cynthia Jackson</i>		SIGNATURE: <i>[Signature]</i>					REMARKS												Total Pb Method 200.8	No # of Containers		
#	SAMPLE ID	DATE	TIME	Grab	Composite	Matrix (See codes)	I															
1	4053-012417-DF-008-B	1/24/2017	0555	X		DW	X															
2	4053-012417-DF-008-C	1/24/2017	0556	X		DW	X															
3	4053-012417-DF-009-A	1/24/2017	0540	X		DW	X															
4	4053-012417-DF-009-B	1/24/2017	0541	X		DW	X															
5	4053-012417-DF-010-A	1/24/2017	0529	X		DW	X															
6	4053-012417-DF-010-B	1/24/2017	0530	X		DW	X															
7	4053-012417-DF-011-A	1/24/2017	0531	X		DW	X															
8	4053-012417-DF-011-B	1/24/2017	0532	X		DW	X															
9	4053-012417-DF-012-A	1/24/2017	0515	X		DW	X															
10	4053-012417-DF-012-B	1/24/2017	0516	X		DW	X															
11	4053-012417-DF-013-A	1/24/2017		X		DW																not sampled
12	4053-012417-DF-013-B	1/24/2017		X		DW																not sampled
13	4053-012417-DF-014-A	1/24/2017	0506	X		DW	X															
14	4053-012417-DF-014-B	1/24/2017	0507	X		DW	X															
15	4053-012417-DF-015-A	1/24/2017	0508	X		DW	X															
RELINQUISHED BY		DATE/TIME		RECEIVED BY		DATE/TIME		PROJECT INFORMATION												RECEIPT		
1: <i>[Signature]</i>		1/24/17 7:40A		2: <i>[Signature]</i>		1/24/17 7:40		PROJECT NAME: DCSD												Total # of Containers		
2: <i>[Signature]</i>				3:				PROJECT #: 1561-1601												<input type="radio"/> Turnaround Time Request <input type="radio"/> Standard 5 Business Days <input type="radio"/> 2 Business Day Rush <input type="radio"/> Next Business Day Rush <input type="radio"/> Same Day Rush (auth req.) <input checked="" type="radio"/> Other: 10 business Days		
3:								SITE ADDRESS: 4053														
SPECIAL INSTRUCTIONS/COMMENTS:		SHIPMENT METHOD		SEND REPORT TO: Leona Miles and Tim Royer												STATE PROGRAM (if any):						
Preserve at the Lab per protocol		OUT / / VIA:		INVOICE TO: (IF DIFFERENT FROM ABOVE)												E-mail? Y/N; Fax? Y/N						
		IN / / VIA:		leona-miles@aem-net.com; tim-royer@aem-net.com												DATA PACKAGE: I II III IV						
		<input checked="" type="radio"/> CLIENT FedEx UPS MAIL COURIER		QUOTE #: _____ PO#: _____																		
		GREYHOUND OTHER _____																				

SAMPLES RECEIVED AFTER 3PM OR SATURDAY ARE CONSIDERED AS RECEIVED ON THE NEXT BUSINESS DAY; IF NO TAT IS MARKED ON COC AES WILL PROCEED AS STANDARD TAT. SAMPLES ARE DISPOSED OF 30 DAYS AFTER COMPLETION OF REPORT UNLESS OTHER ARRANGEMENTS ARE MADE.



ANALYTICAL ENVIRONMENTAL SERVICES, INC

3080 Presidential Drive, Atlanta GA 30340-3704
TEL.: (770) 457-8177 / TOLL-FREE (800) 972-4889 / FAX: (770) 457-8188

CHAIN OF CUSTODY

Work Order: 1701J34

Date: 1/24/17 Page 3 of 5

Main form containing company details, sample list with columns for sample ID, date, time, grab, composite, matrix, and analysis requested. Includes sections for 'RELINQUISHED BY', 'RECEIVED BY', 'PROJECT INFORMATION', and 'RECEIPT'.

MATRIX CODES: A = Air GW = Groundwater SE = Sediment SO = Soil SW = Surface Water DW = Drinking Water W = Water (Blanks) O = Other (specify)
PRESERVATIVE CODES: H+I = Hydrochloric acid + ice I = Ice only N = Nitric acid S+I = Sulfuric acid + ice S/M+I = Sodium Bisulfate/Methanol + ice O = Other (specify) NA = None



ANALYTICAL ENVIRONMENTAL SERVICES, INC

3080 Presidential Drive, Atlanta GA 30340-3704
TEL.: (770) 457-8177 / TOLL-FREE (800) 972-4889 / FAX: (770) 457-8188

CHAIN OF CUSTODY

Work Order: 1701J34

Date: 1/24/17 Page 4 of 5

Form containing company information, sample list with columns for sample ID, date, time, grab/composite/matrix, analysis requested, and remarks. Includes sections for project information, receipt, and shipment method.

MATRIX CODES: A = Air GW = Groundwater SE = Sediment SO = Soil SW = Surface Water DW=Drinking Water W = Water (Blanks) O = Other (specify)
PRESERVATIVE CODES: H+I = Hydrochloric acid + ice I = Ice only N = Nitric acid S+I = Sulfuric acid + ice S/M+I = Sodium Bisulfate/Methanol + ice O = Other (specify) NA = None



ANALYTICAL ENVIRONMENTAL SERVICES, INC
 3080 Presidential Drive, Atlanta GA 30340-3704
 TEL.: (770) 457-8177 / TOLL-FREE (800) 972-4889 / FAX: (770) 457-8188

CHAIN OF CUSTODY

Work Order: **1701J34**

Date: 1/24/17 Page 5 of 5

COMPANY:		ADDRESS:				ANALYSIS REQUESTED												Visit our website www.aesatlanta.com to check on the status of your results, place bottle orders, etc.		No # of Containers				
Atlanta Environmental Management, Inc		2580 Northeast Expressway, NE Atlanta, GA 30345				Total Pb Method 200.8													REMARKS					
PHONE:		FAX:					PRESERVATION (See codes)																	
(404) 329-9006		(404) 329-2057				I																		
SAMPLED BY:		SIGNATURE:																						
Cynthia Jackson		<i>Cynthia Jackson</i>																						
#	SAMPLE ID	SAMPLED		Grab	Composite	Matrix (See codes)																		
		DATE	TIME																					
1	4053-012417-IM-001-A	1/24/2017	0510	X		DW	X																	
2	4053-012417-IM-002-A	1/24/2017	0543	X		DW	X																	
3	4053-012417-IM-003-A	1/24/2017		X		DW																		not sampled
4	4053-012417-SC-001-A	1/24/2017	0454	X		DW	X																	
5																								
6																								
7																								
8																								
9																								
10																								
11																								
12																								
13																								
14																								
15																								
RELINQUISHED BY		DATE/TIME	RECEIVED BY		DATE/TIME	PROJECT INFORMATION												RECEIPT						
1: <i>Cynthia Jackson</i>		1/24/2017 7:40A	1: <i>Tim Royer</i>		1/24/2017 7:40	PROJECT NAME: DCSO												Total # of Containers						
2: <i>Cynthia Jackson</i>			2: <i>Tim Royer</i>			PROJECT #: 1561-1601												Turnaround Time Request						
3: <i>Cynthia Jackson</i>			3: <i>Tim Royer</i>			SITE ADDRESS: 4053												<input type="radio"/> Standard 5 Business Days						
						SEND REPORT TO: Leona Miles and Tim Royer												<input type="radio"/> 2 Business Day Rush						
						INVOICE TO: (IF DIFFERENT FROM ABOVE)												<input type="radio"/> Next Business Day Rush						
SPECIAL INSTRUCTIONS/COMMENTS:			SHIPMENT METHOD			leona-miles@aem-net.com; tim-royer@aem-net.com												<input type="radio"/> Same Day Rush (auth req.)						
Preserve at the Lab per protocol			OUT / / VIA:			GREYHOUND OTHER												<input checked="" type="radio"/> Other: 10 business Days						
			IN <i>(C)</i> / / VIA:			QUOTE #: _____ PO#: _____												STATE PROGRAM (if any): _____						
																		E-mail? Y/N; Fax? Y/N						
																		DATA PACKAGE: I II III IV						

SAMPLES RECEIVED AFTER 3PM OR SATURDAY ARE CONSIDERED AS RECEIVED ON THE NEXT BUSINESS DAY; IF NO TAT IS MARKED ON COC AES WILL PROCEED AS STANDARD TAT.

SAMPLES ARE DISPOSED OF 30 DAYS AFTER COMPLETION OF REPORT UNLESS OTHER ARRANGEMENTS ARE MADE.

MATRIX CODES: A = Air GW = Groundwater SE = Sediment SO = Soil SW = Surface Water DW = Drinking Water W = Water (Blanks) O = Other (specify)

PRESERVATIVE CODES: H+I = Hydrochloric acid + ice I = Ice only N = Nitric acid S+I = Sulfuric acid + ice S/M+I = Sodium Bisulfate/Methanol + ice O = Other (specify) NA = None

Analytical Environmental Services, Inc

Date: 7-Feb-17

Client: Atlanta Environmental Mgmt	Client Sample ID: 4053-012417-DF-001-A
Project Name: DCSD - 4053	Collection Date: 1/24/2017 5:44:00 AM
Lab ID: 1701J34-001	Matrix: Drinking Water

Analyses	Result	Reporting Limit	Qual	Units	BatchID	Dilution Factor	Date Analyzed	Analyst
Trace Elements by ICP/MS E200.8								
				(E200.2)				
Lead	BRL	1.00		ug/L	237148	1	01/31/2017 00:38	JR

Qualifiers:

- * Value exceeds maximum contaminant level
- BRL Below reporting limit
- H Holding times for preparation or analysis exceeded
- N Analyte not NELAC certified
- B Analyte detected in the associated method blank
- > Greater than Result value

- E Estimated (value above quantitation range)
- S Spike Recovery outside limits due to matrix
- Narr See case narrative
- NC Not confirmed
- < Less than Result value
- J Estimated value detected below Reporting Limit

Analytical Environmental Services, Inc

Date: 7-Feb-17

Client: Atlanta Environmental Mgmt	Client Sample ID: 4053-012417-DF-001-B
Project Name: DCSD - 4053	Collection Date: 1/24/2017 5:45:00 AM
Lab ID: 1701J34-002	Matrix: Drinking Water

Analyses	Result	Reporting Limit	Qual	Units	BatchID	Dilution Factor	Date Analyzed	Analyst
Trace Elements by ICP/MS E200.8					(E200.2)			
Lead	BRL	1.00		ug/L	237148	1	01/31/2017 01:09	JR

Qualifiers:

- * Value exceeds maximum contaminant level
- BRL Below reporting limit
- H Holding times for preparation or analysis exceeded
- N Analyte not NELAC certified
- B Analyte detected in the associated method blank
- > Greater than Result value

- E Estimated (value above quantitation range)
- S Spike Recovery outside limits due to matrix
- Narr See case narrative
- NC Not confirmed
- < Less than Result value
- J Estimated value detected below Reporting Limit

Analytical Environmental Services, Inc

Date: 7-Feb-17

Client: Atlanta Environmental Mgmt	Client Sample ID: 4053-012417-DF-002-A
Project Name: DCSD - 4053	Collection Date: 1/24/2017 5:46:00 AM
Lab ID: 1701J34-003	Matrix: Drinking Water

Analyses	Result	Reporting Limit	Qual	Units	BatchID	Dilution Factor	Date Analyzed	Analyst
Trace Elements by ICP/MS E200.8					(E200.2)			
Lead	BRL	1.00		ug/L	237148	1	01/31/2017 01:28	JR

Qualifiers:

- * Value exceeds maximum contaminant level
- BRL Below reporting limit
- H Holding times for preparation or analysis exceeded
- N Analyte not NELAC certified
- B Analyte detected in the associated method blank
- > Greater than Result value

- E Estimated (value above quantitation range)
- S Spike Recovery outside limits due to matrix
- Narr See case narrative
- NC Not confirmed
- < Less than Result value
- J Estimated value detected below Reporting Limit

Analytical Environmental Services, Inc

Date: 7-Feb-17

Client: Atlanta Environmental Mgmt	Client Sample ID: 4053-012417-DF-002-B
Project Name: DCSD - 4053	Collection Date: 1/24/2017 5:47:00 AM
Lab ID: 1701J34-004	Matrix: Drinking Water

Analyses	Result	Reporting Limit	Qual	Units	BatchID	Dilution Factor	Date Analyzed	Analyst
Trace Elements by ICP/MS E200.8					(E200.2)			
Lead	BRL	1.00		ug/L	237148	1	01/31/2017 01:35	JR

Qualifiers:

- * Value exceeds maximum contaminant level
- BRL Below reporting limit
- H Holding times for preparation or analysis exceeded
- N Analyte not NELAC certified
- B Analyte detected in the associated method blank
- > Greater than Result value

- E Estimated (value above quantitation range)
- S Spike Recovery outside limits due to matrix
- Narr See case narrative
- NC Not confirmed
- < Less than Result value
- J Estimated value detected below Reporting Limit

Analytical Environmental Services, Inc

Date: 7-Feb-17

Client: Atlanta Environmental Mgmt	Client Sample ID: 4053-012417-DF-003-A
Project Name: DCSD - 4053	Collection Date: 1/24/2017 5:48:00 AM
Lab ID: 1701J34-005	Matrix: Drinking Water

Analyses	Result	Reporting Limit	Qual	Units	BatchID	Dilution Factor	Date Analyzed	Analyst
Trace Elements by ICP/MS E200.8					(E200.2)			
Lead	1.73	1.00		ug/L	237148	1	01/31/2017 01:41	JR

Qualifiers:

- * Value exceeds maximum contaminant level
- BRL Below reporting limit
- H Holding times for preparation or analysis exceeded
- N Analyte not NELAC certified
- B Analyte detected in the associated method blank
- > Greater than Result value

- E Estimated (value above quantitation range)
- S Spike Recovery outside limits due to matrix
- Narr See case narrative
- NC Not confirmed
- < Less than Result value
- J Estimated value detected below Reporting Limit

Analytical Environmental Services, Inc

Date: 7-Feb-17

Client: Atlanta Environmental Mgmt	Client Sample ID: 4053-012417-DF-003-B
Project Name: DCSD - 4053	Collection Date: 1/24/2017 5:49:00 AM
Lab ID: 1701J34-006	Matrix: Drinking Water

Analyses	Result	Reporting Limit	Qual	Units	BatchID	Dilution Factor	Date Analyzed	Analyst
Trace Elements by ICP/MS E200.8					(E200.2)			
Lead	1.68	1.00		ug/L	237148	1	01/31/2017 01:47	JR

Qualifiers:

- * Value exceeds maximum contaminant level
- BRL Below reporting limit
- H Holding times for preparation or analysis exceeded
- N Analyte not NELAC certified
- B Analyte detected in the associated method blank
- > Greater than Result value

- E Estimated (value above quantitation range)
- S Spike Recovery outside limits due to matrix
- Narr See case narrative
- NC Not confirmed
- < Less than Result value
- J Estimated value detected below Reporting Limit

Analytical Environmental Services, Inc

Date: 7-Feb-17

Client: Atlanta Environmental Mgmt	Client Sample ID: 4053-012417-DF-004-A
Project Name: DCSD - 4053	Collection Date: 1/24/2017 5:50:00 AM
Lab ID: 1701J34-007	Matrix: Drinking Water

Analyses	Result	Reporting Limit	Qual	Units	BatchID	Dilution Factor	Date Analyzed	Analyst
Trace Elements by ICP/MS E200.8					(E200.2)			
Lead	BRL	1.00		ug/L	237148	1	01/31/2017 01:54	JR

Qualifiers:

- * Value exceeds maximum contaminant level
- BRL Below reporting limit
- H Holding times for preparation or analysis exceeded
- N Analyte not NELAC certified
- B Analyte detected in the associated method blank
- > Greater than Result value

- E Estimated (value above quantitation range)
- S Spike Recovery outside limits due to matrix
- Narr See case narrative
- NC Not confirmed
- < Less than Result value
- J Estimated value detected below Reporting Limit

Analytical Environmental Services, Inc

Date: 7-Feb-17

Client: Atlanta Environmental Mgmt	Client Sample ID: 4053-012417-DF-004-B
Project Name: DCSD - 4053	Collection Date: 1/24/2017 5:51:00 AM
Lab ID: 1701J34-008	Matrix: Drinking Water

Analyses	Result	Reporting Limit	Qual	Units	BatchID	Dilution Factor	Date Analyzed	Analyst
Trace Elements by ICP/MS E200.8					(E200.2)			
Lead	BRL	1.00		ug/L	237148	1	01/31/2017 02:00	JR

Qualifiers:

- * Value exceeds maximum contaminant level
- BRL Below reporting limit
- H Holding times for preparation or analysis exceeded
- N Analyte not NELAC certified
- B Analyte detected in the associated method blank
- > Greater than Result value

- E Estimated (value above quantitation range)
- S Spike Recovery outside limits due to matrix
- Narr See case narrative
- NC Not confirmed
- < Less than Result value
- J Estimated value detected below Reporting Limit

Analytical Environmental Services, Inc

Date: 7-Feb-17

Client: Atlanta Environmental Mgmt	Client Sample ID: 4053-012417-DF-006-A
Project Name: DCSD - 4053	Collection Date: 1/24/2017 5:30:00 AM
Lab ID: 1701J34-009	Matrix: Drinking Water

Analyses	Result	Reporting Limit	Qual	Units	BatchID	Dilution Factor	Date Analyzed	Analyst
Trace Elements by ICP/MS E200.8					(E200.2)			
Lead	2.34	1.00		ug/L	237148	1	01/31/2017 02:06	JR

Qualifiers:

- * Value exceeds maximum contaminant level
- BRL Below reporting limit
- H Holding times for preparation or analysis exceeded
- N Analyte not NELAC certified
- B Analyte detected in the associated method blank
- > Greater than Result value

- E Estimated (value above quantitation range)
- S Spike Recovery outside limits due to matrix
- Narr See case narrative
- NC Not confirmed
- < Less than Result value
- J Estimated value detected below Reporting Limit

Analytical Environmental Services, Inc

Date: 7-Feb-17

Client: Atlanta Environmental Mgmt	Client Sample ID: 4053-012417-DF-006-B
Project Name: DCSD - 4053	Collection Date: 1/24/2017 5:31:00 AM
Lab ID: 1701J34-010	Matrix: Drinking Water

Analyses	Result	Reporting Limit	Qual	Units	BatchID	Dilution Factor	Date Analyzed	Analyst
Trace Elements by ICP/MS E200.8					(E200.2)			
Lead	1.75	1.00		ug/L	237148	1	01/31/2017 02:12	JR

Qualifiers:

- * Value exceeds maximum contaminant level
- BRL Below reporting limit
- H Holding times for preparation or analysis exceeded
- N Analyte not NELAC certified
- B Analyte detected in the associated method blank
- > Greater than Result value

- E Estimated (value above quantitation range)
- S Spike Recovery outside limits due to matrix
- Narr See case narrative
- NC Not confirmed
- < Less than Result value
- J Estimated value detected below Reporting Limit

Analytical Environmental Services, Inc

Date: 7-Feb-17

Client: Atlanta Environmental Mgmt	Client Sample ID: 4053-012417-DF-007-A
Project Name: DCSD - 4053	Collection Date: 1/24/2017 5:15:00 AM
Lab ID: 1701J34-011	Matrix: Drinking Water

Analyses	Result	Reporting Limit	Qual	Units	BatchID	Dilution Factor	Date Analyzed	Analyst
Trace Elements by ICP/MS E200.8					(E200.2)			
Lead	1.25	1.00		ug/L	237148	1	01/31/2017 00:57	JR

Qualifiers:

- * Value exceeds maximum contaminant level
- BRL Below reporting limit
- H Holding times for preparation or analysis exceeded
- N Analyte not NELAC certified
- B Analyte detected in the associated method blank
- > Greater than Result value

- E Estimated (value above quantitation range)
- S Spike Recovery outside limits due to matrix
- Narr See case narrative
- NC Not confirmed
- < Less than Result value
- J Estimated value detected below Reporting Limit

Analytical Environmental Services, Inc

Date: 7-Feb-17

Client: Atlanta Environmental Mgmt	Client Sample ID: 4053-012417-DF-007-B
Project Name: DCSD - 4053	Collection Date: 1/24/2017 5:16:00 AM
Lab ID: 1701J34-012	Matrix: Drinking Water

Analyses	Result	Reporting Limit	Qual	Units	BatchID	Dilution Factor	Date Analyzed	Analyst
Trace Elements by ICP/MS E200.8					(E200.2)			
Lead	1.22	1.00		ug/L	237148	1	01/31/2017 02:19	JR

Qualifiers:

- * Value exceeds maximum contaminant level
- BRL Below reporting limit
- H Holding times for preparation or analysis exceeded
- N Analyte not NELAC certified
- B Analyte detected in the associated method blank
- > Greater than Result value

- E Estimated (value above quantitation range)
- S Spike Recovery outside limits due to matrix
- Narr See case narrative
- NC Not confirmed
- < Less than Result value
- J Estimated value detected below Reporting Limit

Analytical Environmental Services, Inc

Date: 7-Feb-17

Client: Atlanta Environmental Mgmt	Client Sample ID: 4053-012417-DF-008-A
Project Name: DCSD - 4053	Collection Date: 1/24/2017 5:54:00 AM
Lab ID: 1701J34-013	Matrix: Drinking Water

Analyses	Result	Reporting Limit	Qual	Units	BatchID	Dilution Factor	Date Analyzed	Analyst
Trace Elements by ICP/MS E200.8					(E200.2)			
Lead	BRL	1.00		ug/L	237148	1	01/31/2017 02:25	JR

Qualifiers:

- * Value exceeds maximum contaminant level
- BRL Below reporting limit
- H Holding times for preparation or analysis exceeded
- N Analyte not NELAC certified
- B Analyte detected in the associated method blank
- > Greater than Result value

- E Estimated (value above quantitation range)
- S Spike Recovery outside limits due to matrix
- Narr See case narrative
- NC Not confirmed
- < Less than Result value
- J Estimated value detected below Reporting Limit

Analytical Environmental Services, Inc

Date: 7-Feb-17

Client: Atlanta Environmental Mgmt	Client Sample ID: 4053-012417-DF-008-B
Project Name: DCSD - 4053	Collection Date: 1/24/2017 5:55:00 AM
Lab ID: 1701J34-014	Matrix: Drinking Water

Analyses	Result	Reporting Limit	Qual	Units	BatchID	Dilution Factor	Date Analyzed	Analyst
Trace Elements by ICP/MS E200.8					(E200.2)			
Lead	BRL	1.00		ug/L	237148	1	01/31/2017 02:44	JR

Qualifiers:

- * Value exceeds maximum contaminant level
- BRL Below reporting limit
- H Holding times for preparation or analysis exceeded
- N Analyte not NELAC certified
- B Analyte detected in the associated method blank
- > Greater than Result value

- E Estimated (value above quantitation range)
- S Spike Recovery outside limits due to matrix
- Narr See case narrative
- NC Not confirmed
- < Less than Result value
- J Estimated value detected below Reporting Limit

Analytical Environmental Services, Inc

Date: 7-Feb-17

Client: Atlanta Environmental Mgmt	Client Sample ID: 4053-012417-DF-008-C
Project Name: DCSD - 4053	Collection Date: 1/24/2017 5:56:00 AM
Lab ID: 1701J34-015	Matrix: Drinking Water

Analyses	Result	Reporting Limit	Qual	Units	BatchID	Dilution Factor	Date Analyzed	Analyst
Trace Elements by ICP/MS E200.8								
				(E200.2)				
Lead	BRL	1.00		ug/L	237148	1	01/31/2017 02:50	JR

Qualifiers:

- * Value exceeds maximum contaminant level
- BRL Below reporting limit
- H Holding times for preparation or analysis exceeded
- N Analyte not NELAC certified
- B Analyte detected in the associated method blank
- > Greater than Result value

- E Estimated (value above quantitation range)
- S Spike Recovery outside limits due to matrix
- Narr See case narrative
- NC Not confirmed
- < Less than Result value
- J Estimated value detected below Reporting Limit

Analytical Environmental Services, Inc

Date: 7-Feb-17

Client: Atlanta Environmental Mgmt	Client Sample ID: 4053-012417-DF-009-A
Project Name: DCSD - 4053	Collection Date: 1/24/2017 5:40:00 AM
Lab ID: 1701J34-016	Matrix: Drinking Water

Analyses	Result	Reporting Limit	Qual	Units	BatchID	Dilution Factor	Date Analyzed	Analyst
Trace Elements by ICP/MS E200.8					(E200.2)			
Lead	BRL	1.00		ug/L	237148	1	01/31/2017 02:57	JR

Qualifiers:

- * Value exceeds maximum contaminant level
- BRL Below reporting limit
- H Holding times for preparation or analysis exceeded
- N Analyte not NELAC certified
- B Analyte detected in the associated method blank
- > Greater than Result value

- E Estimated (value above quantitation range)
- S Spike Recovery outside limits due to matrix
- Narr See case narrative
- NC Not confirmed
- < Less than Result value
- J Estimated value detected below Reporting Limit

Analytical Environmental Services, Inc

Date: 7-Feb-17

Client: Atlanta Environmental Mgmt	Client Sample ID: 4053-012417-DF-009-B
Project Name: DCSD - 4053	Collection Date: 1/24/2017 5:41:00 AM
Lab ID: 1701J34-017	Matrix: Drinking Water

Analyses	Result	Reporting Limit	Qual	Units	BatchID	Dilution Factor	Date Analyzed	Analyst
Trace Elements by ICP/MS E200.8					(E200.2)			
Lead	BRL	1.00		ug/L	237148	1	01/31/2017 03:03	JR

Qualifiers:

- * Value exceeds maximum contaminant level
- BRL Below reporting limit
- H Holding times for preparation or analysis exceeded
- N Analyte not NELAC certified
- B Analyte detected in the associated method blank
- > Greater than Result value

- E Estimated (value above quantitation range)
- S Spike Recovery outside limits due to matrix
- Narr See case narrative
- NC Not confirmed
- < Less than Result value
- J Estimated value detected below Reporting Limit

Analytical Environmental Services, Inc

Date: 7-Feb-17

Client: Atlanta Environmental Mgmt	Client Sample ID: 4053-012417-DF-010-A
Project Name: DCSD - 4053	Collection Date: 1/24/2017 5:29:00 AM
Lab ID: 1701J34-018	Matrix: Drinking Water

Analyses	Result	Reporting Limit	Qual	Units	BatchID	Dilution Factor	Date Analyzed	Analyst
Trace Elements by ICP/MS E200.8								
				(E200.2)				
Lead	BRL	1.00		ug/L	237148	1	01/31/2017 03:09	JR

Qualifiers:

- * Value exceeds maximum contaminant level
- BRL Below reporting limit
- H Holding times for preparation or analysis exceeded
- N Analyte not NELAC certified
- B Analyte detected in the associated method blank
- > Greater than Result value

- E Estimated (value above quantitation range)
- S Spike Recovery outside limits due to matrix
- Narr See case narrative
- NC Not confirmed
- < Less than Result value
- J Estimated value detected below Reporting Limit

Analytical Environmental Services, Inc

Date: 7-Feb-17

Client: Atlanta Environmental Mgmt	Client Sample ID: 4053-012417-DF-010-B
Project Name: DCSD - 4053	Collection Date: 1/24/2017 5:30:00 AM
Lab ID: 1701J34-019	Matrix: Drinking Water

Analyses	Result	Reporting Limit	Qual	Units	BatchID	Dilution Factor	Date Analyzed	Analyst
Trace Elements by ICP/MS E200.8					(E200.2)			
Lead	BRL	1.00		ug/L	237148	1	01/31/2017 03:16	JR

Qualifiers:

- * Value exceeds maximum contaminant level
- BRL Below reporting limit
- H Holding times for preparation or analysis exceeded
- N Analyte not NELAC certified
- B Analyte detected in the associated method blank
- > Greater than Result value

- E Estimated (value above quantitation range)
- S Spike Recovery outside limits due to matrix
- Narr See case narrative
- NC Not confirmed
- < Less than Result value
- J Estimated value detected below Reporting Limit

Analytical Environmental Services, Inc

Date: 7-Feb-17

Client: Atlanta Environmental Mgmt	Client Sample ID: 4053-012417-DF-011-A
Project Name: DCSD - 4053	Collection Date: 1/24/2017 5:31:00 AM
Lab ID: 1701J34-020	Matrix: Drinking Water

Analyses	Result	Reporting Limit	Qual	Units	BatchID	Dilution Factor	Date Analyzed	Analyst
Trace Elements by ICP/MS E200.8					(E200.2)			
Lead	BRL	1.00		ug/L	237148	1	01/31/2017 03:22	JR

Qualifiers:

- * Value exceeds maximum contaminant level
- BRL Below reporting limit
- H Holding times for preparation or analysis exceeded
- N Analyte not NELAC certified
- B Analyte detected in the associated method blank
- > Greater than Result value

- E Estimated (value above quantitation range)
- S Spike Recovery outside limits due to matrix
- Narr See case narrative
- NC Not confirmed
- < Less than Result value
- J Estimated value detected below Reporting Limit

Analytical Environmental Services, Inc

Date: 7-Feb-17

Client: Atlanta Environmental Mgmt	Client Sample ID: 4053-012417-DF-011-B
Project Name: DCSD - 4053	Collection Date: 1/24/2017 5:32:00 AM
Lab ID: 1701J34-021	Matrix: Drinking Water

Analyses	Result	Reporting Limit	Qual	Units	BatchID	Dilution Factor	Date Analyzed	Analyst
Trace Elements by ICP/MS E200.8					(E200.2)			
Lead	BRL	1.00		ug/L	237149	1	01/31/2017 03:41	JR

Qualifiers:

- * Value exceeds maximum contaminant level
- BRL Below reporting limit
- H Holding times for preparation or analysis exceeded
- N Analyte not NELAC certified
- B Analyte detected in the associated method blank
- > Greater than Result value

- E Estimated (value above quantitation range)
- S Spike Recovery outside limits due to matrix
- Narr See case narrative
- NC Not confirmed
- < Less than Result value
- J Estimated value detected below Reporting Limit

Analytical Environmental Services, Inc

Date: 7-Feb-17

Client: Atlanta Environmental Mgmt	Client Sample ID: 4053-012417-DF-012-A
Project Name: DCSD - 4053	Collection Date: 1/24/2017 5:15:00 AM
Lab ID: 1701J34-022	Matrix: Drinking Water

Analyses	Result	Reporting Limit	Qual	Units	BatchID	Dilution Factor	Date Analyzed	Analyst
Trace Elements by ICP/MS E200.8					(E200.2)			
Lead	BRL	1.00		ug/L	237149	1	01/31/2017 04:25	JR

Qualifiers:

- * Value exceeds maximum contaminant level
- BRL Below reporting limit
- H Holding times for preparation or analysis exceeded
- N Analyte not NELAC certified
- B Analyte detected in the associated method blank
- > Greater than Result value

- E Estimated (value above quantitation range)
- S Spike Recovery outside limits due to matrix
- Narr See case narrative
- NC Not confirmed
- < Less than Result value
- J Estimated value detected below Reporting Limit

Analytical Environmental Services, Inc

Date: 7-Feb-17

Client: Atlanta Environmental Mgmt	Client Sample ID: 4053-012417-DF-012-B
Project Name: DCSD - 4053	Collection Date: 1/24/2017 5:16:00 AM
Lab ID: 1701J34-023	Matrix: Drinking Water

Analyses	Result	Reporting Limit	Qual	Units	BatchID	Dilution Factor	Date Analyzed	Analyst
Trace Elements by ICP/MS E200.8					(E200.2)			
Lead	BRL	1.00		ug/L	237149	1	01/31/2017 04:31	JR

Qualifiers:

- * Value exceeds maximum contaminant level
- BRL Below reporting limit
- H Holding times for preparation or analysis exceeded
- N Analyte not NELAC certified
- B Analyte detected in the associated method blank
- > Greater than Result value

- E Estimated (value above quantitation range)
- S Spike Recovery outside limits due to matrix
- Narr See case narrative
- NC Not confirmed
- < Less than Result value
- J Estimated value detected below Reporting Limit

Analytical Environmental Services, Inc

Date: 7-Feb-17

Client: Atlanta Environmental Mgmt	Client Sample ID: 4053-012417-DF-014-A
Project Name: DCSD - 4053	Collection Date: 1/24/2017 5:06:00 AM
Lab ID: 1701J34-024	Matrix: Drinking Water

Analyses	Result	Reporting Limit	Qual	Units	BatchID	Dilution Factor	Date Analyzed	Analyst
Trace Elements by ICP/MS E200.8								
				(E200.2)				
Lead	BRL	1.00		ug/L	237149	1	01/31/2017 04:38	JR

Qualifiers:

- * Value exceeds maximum contaminant level
- BRL Below reporting limit
- H Holding times for preparation or analysis exceeded
- N Analyte not NELAC certified
- B Analyte detected in the associated method blank
- > Greater than Result value

- E Estimated (value above quantitation range)
- S Spike Recovery outside limits due to matrix
- Narr See case narrative
- NC Not confirmed
- < Less than Result value
- J Estimated value detected below Reporting Limit

Analytical Environmental Services, Inc

Date: 7-Feb-17

Client: Atlanta Environmental Mgmt	Client Sample ID: 4053-012417-DF-014-B
Project Name: DCSD - 4053	Collection Date: 1/24/2017 5:07:00 AM
Lab ID: 1701J34-025	Matrix: Drinking Water

Analyses	Result	Reporting Limit	Qual	Units	BatchID	Dilution Factor	Date Analyzed	Analyst
Trace Elements by ICP/MS E200.8					(E200.2)			
Lead	BRL	1.00		ug/L	237149	1	01/31/2017 04:44	JR

Qualifiers:

- * Value exceeds maximum contaminant level
- BRL Below reporting limit
- H Holding times for preparation or analysis exceeded
- N Analyte not NELAC certified
- B Analyte detected in the associated method blank
- > Greater than Result value

- E Estimated (value above quantitation range)
- S Spike Recovery outside limits due to matrix
- Narr See case narrative
- NC Not confirmed
- < Less than Result value
- J Estimated value detected below Reporting Limit

Analytical Environmental Services, Inc

Date: 7-Feb-17

Client: Atlanta Environmental Mgmt	Client Sample ID: 4053-012417-DF-015-A
Project Name: DCSD - 4053	Collection Date: 1/24/2017 5:08:00 AM
Lab ID: 1701J34-026	Matrix: Drinking Water

Analyses	Result	Reporting Limit	Qual	Units	BatchID	Dilution Factor	Date Analyzed	Analyst
Trace Elements by ICP/MS E200.8					(E200.2)			
Lead	7.06	1.00		ug/L	237149	1	01/31/2017 04:50	JR

Qualifiers:

- * Value exceeds maximum contaminant level
- BRL Below reporting limit
- H Holding times for preparation or analysis exceeded
- N Analyte not NELAC certified
- B Analyte detected in the associated method blank
- > Greater than Result value

- E Estimated (value above quantitation range)
- S Spike Recovery outside limits due to matrix
- Narr See case narrative
- NC Not confirmed
- < Less than Result value
- J Estimated value detected below Reporting Limit

Analytical Environmental Services, Inc

Date: 7-Feb-17

Client: Atlanta Environmental Mgmt	Client Sample ID: 4053-012417-DF-015-B
Project Name: DCSD - 4053	Collection Date: 1/24/2017 5:09:00 AM
Lab ID: 1701J34-027	Matrix: Drinking Water

Analyses	Result	Reporting Limit	Qual	Units	BatchID	Dilution Factor	Date Analyzed	Analyst
Trace Elements by ICP/MS E200.8					(E200.2)			
Lead	7.15	1.00		ug/L	237149	1	01/31/2017 04:57	JR

Qualifiers:

- * Value exceeds maximum contaminant level
- BRL Below reporting limit
- H Holding times for preparation or analysis exceeded
- N Analyte not NELAC certified
- B Analyte detected in the associated method blank
- > Greater than Result value

- E Estimated (value above quantitation range)
- S Spike Recovery outside limits due to matrix
- Narr See case narrative
- NC Not confirmed
- < Less than Result value
- J Estimated value detected below Reporting Limit

Analytical Environmental Services, Inc

Date: 7-Feb-17

Client: Atlanta Environmental Mgmt	Client Sample ID: 4053-012417-DF-016-A
Project Name: DCSD - 4053	Collection Date: 1/24/2017 5:23:00 AM
Lab ID: 1701J34-028	Matrix: Drinking Water

Analyses	Result	Reporting Limit	Qual	Units	BatchID	Dilution Factor	Date Analyzed	Analyst
Trace Elements by ICP/MS E200.8					(E200.2)			
Lead	BRL	1.00		ug/L	237149	1	01/31/2017 05:16	JR

Qualifiers:

- * Value exceeds maximum contaminant level
- BRL Below reporting limit
- H Holding times for preparation or analysis exceeded
- N Analyte not NELAC certified
- B Analyte detected in the associated method blank
- > Greater than Result value

- E Estimated (value above quantitation range)
- S Spike Recovery outside limits due to matrix
- Narr See case narrative
- NC Not confirmed
- < Less than Result value
- J Estimated value detected below Reporting Limit

Analytical Environmental Services, Inc

Date: 7-Feb-17

Client: Atlanta Environmental Mgmt	Client Sample ID: 4053-012417-DF-016-B
Project Name: DCSD - 4053	Collection Date: 1/24/2017 5:24:00 AM
Lab ID: 1701J34-029	Matrix: Drinking Water

Analyses	Result	Reporting Limit	Qual	Units	BatchID	Dilution Factor	Date Analyzed	Analyst
Trace Elements by ICP/MS E200.8					(E200.2)			
Lead	BRL	1.00		ug/L	237149	1	01/31/2017 05:22	JR

Qualifiers:

- * Value exceeds maximum contaminant level
- BRL Below reporting limit
- H Holding times for preparation or analysis exceeded
- N Analyte not NELAC certified
- B Analyte detected in the associated method blank
- > Greater than Result value

- E Estimated (value above quantitation range)
- S Spike Recovery outside limits due to matrix
- Narr See case narrative
- NC Not confirmed
- < Less than Result value
- J Estimated value detected below Reporting Limit

Analytical Environmental Services, Inc

Date: 7-Feb-17

Client: Atlanta Environmental Mgmt	Client Sample ID: 4053-012417-DF-018-A
Project Name: DCSD - 4053	Collection Date: 1/24/2017 5:12:00 AM
Lab ID: 1701J34-030	Matrix: Drinking Water

Analyses	Result	Reporting Limit	Qual	Units	BatchID	Dilution Factor	Date Analyzed	Analyst
Trace Elements by ICP/MS E200.8					(E200.2)			
Lead	BRL	1.00		ug/L	237149	1	01/31/2017 05:28	JR

Qualifiers:

- * Value exceeds maximum contaminant level
- BRL Below reporting limit
- H Holding times for preparation or analysis exceeded
- N Analyte not NELAC certified
- B Analyte detected in the associated method blank
- > Greater than Result value

- E Estimated (value above quantitation range)
- S Spike Recovery outside limits due to matrix
- Narr See case narrative
- NC Not confirmed
- < Less than Result value
- J Estimated value detected below Reporting Limit

Analytical Environmental Services, Inc

Date: 7-Feb-17

Client: Atlanta Environmental Mgmt	Client Sample ID: 4053-012417-DF-018-B
Project Name: DCSD - 4053	Collection Date: 1/24/2017 5:13:00 AM
Lab ID: 1701J34-031	Matrix: Drinking Water

Analyses	Result	Reporting Limit	Qual	Units	BatchID	Dilution Factor	Date Analyzed	Analyst
Trace Elements by ICP/MS E200.8					(E200.2)			
Lead	BRL	1.00		ug/L	237149	1	01/31/2017 04:12	JR

Qualifiers:

- * Value exceeds maximum contaminant level
- BRL Below reporting limit
- H Holding times for preparation or analysis exceeded
- N Analyte not NELAC certified
- B Analyte detected in the associated method blank
- > Greater than Result value

- E Estimated (value above quantitation range)
- S Spike Recovery outside limits due to matrix
- Narr See case narrative
- NC Not confirmed
- < Less than Result value
- J Estimated value detected below Reporting Limit

Analytical Environmental Services, Inc

Date: 7-Feb-17

Client: Atlanta Environmental Mgmt	Client Sample ID: 4053-012417-DF-019-A
Project Name: DCSD - 4053	Collection Date: 1/24/2017 5:14:00 AM
Lab ID: 1701J34-032	Matrix: Drinking Water

Analyses	Result	Reporting Limit	Qual	Units	BatchID	Dilution Factor	Date Analyzed	Analyst
Trace Elements by ICP/MS E200.8								
				(E200.2)				
Lead	BRL	1.00		ug/L	237149	1	01/31/2017 05:34	JR

Qualifiers:

- * Value exceeds maximum contaminant level
- BRL Below reporting limit
- H Holding times for preparation or analysis exceeded
- N Analyte not NELAC certified
- B Analyte detected in the associated method blank
- > Greater than Result value

- E Estimated (value above quantitation range)
- S Spike Recovery outside limits due to matrix
- Narr See case narrative
- NC Not confirmed
- < Less than Result value
- J Estimated value detected below Reporting Limit

Analytical Environmental Services, Inc

Date: 7-Feb-17

Client: Atlanta Environmental Mgmt	Client Sample ID: 4053-012417-DF-019-B
Project Name: DCSD - 4053	Collection Date: 1/24/2017 5:15:00 AM
Lab ID: 1701J34-033	Matrix: Drinking Water

Analyses	Result	Reporting Limit	Qual	Units	BatchID	Dilution Factor	Date Analyzed	Analyst
Trace Elements by ICP/MS E200.8					(E200.2)			
Lead	BRL	1.00		ug/L	237149	1	01/31/2017 05:41	JR

Qualifiers:

- * Value exceeds maximum contaminant level
- BRL Below reporting limit
- H Holding times for preparation or analysis exceeded
- N Analyte not NELAC certified
- B Analyte detected in the associated method blank
- > Greater than Result value

- E Estimated (value above quantitation range)
- S Spike Recovery outside limits due to matrix
- Narr See case narrative
- NC Not confirmed
- < Less than Result value
- J Estimated value detected below Reporting Limit

Analytical Environmental Services, Inc

Date: 7-Feb-17

Client: Atlanta Environmental Mgmt	Client Sample ID: 4053-012417-DF-020-A
Project Name: DCSD - 4053	Collection Date: 1/24/2017 5:04:00 AM
Lab ID: 1701J34-034	Matrix: Drinking Water

Analyses	Result	Reporting Limit	Qual	Units	BatchID	Dilution Factor	Date Analyzed	Analyst
Trace Elements by ICP/MS E200.8					(E200.2)			
Lead	BRL	1.00		ug/L	237149	1	01/31/2017 05:47	JR

Qualifiers:

- * Value exceeds maximum contaminant level
- BRL Below reporting limit
- H Holding times for preparation or analysis exceeded
- N Analyte not NELAC certified
- B Analyte detected in the associated method blank
- > Greater than Result value

- E Estimated (value above quantitation range)
- S Spike Recovery outside limits due to matrix
- Narr See case narrative
- NC Not confirmed
- < Less than Result value
- J Estimated value detected below Reporting Limit

Analytical Environmental Services, Inc

Date: 7-Feb-17

Client: Atlanta Environmental Mgmt	Client Sample ID: 4053-012417-DF-020-B
Project Name: DCSD - 4053	Collection Date: 1/24/2017 5:05:00 AM
Lab ID: 1701J34-035	Matrix: Drinking Water

Analyses	Result	Reporting Limit	Qual	Units	BatchID	Dilution Factor	Date Analyzed	Analyst
Trace Elements by ICP/MS E200.8					(E200.2)			
Lead	BRL	1.00		ug/L	237149	1	01/31/2017 05:53	JR

Qualifiers:

- * Value exceeds maximum contaminant level
- BRL Below reporting limit
- H Holding times for preparation or analysis exceeded
- N Analyte not NELAC certified
- B Analyte detected in the associated method blank
- > Greater than Result value

- E Estimated (value above quantitation range)
- S Spike Recovery outside limits due to matrix
- Narr See case narrative
- NC Not confirmed
- < Less than Result value
- J Estimated value detected below Reporting Limit

Analytical Environmental Services, Inc

Date: 7-Feb-17

Client: Atlanta Environmental Mgmt	Client Sample ID: 4053-012417-DF-021-A
Project Name: DCSD - 4053	Collection Date: 1/24/2017 5:06:00 AM
Lab ID: 1701J34-036	Matrix: Drinking Water

Analyses	Result	Reporting Limit	Qual	Units	BatchID	Dilution Factor	Date Analyzed	Analyst
Trace Elements by ICP/MS E200.8					(E200.2)			
Lead	BRL	1.00		ug/L	237149	1	01/31/2017 06:00	JR

Qualifiers:

- * Value exceeds maximum contaminant level
- BRL Below reporting limit
- H Holding times for preparation or analysis exceeded
- N Analyte not NELAC certified
- B Analyte detected in the associated method blank
- > Greater than Result value

- E Estimated (value above quantitation range)
- S Spike Recovery outside limits due to matrix
- Narr See case narrative
- NC Not confirmed
- < Less than Result value
- J Estimated value detected below Reporting Limit

Analytical Environmental Services, Inc

Date: 7-Feb-17

Client: Atlanta Environmental Mgmt	Client Sample ID: 4053-012417-DF-021-B
Project Name: DCSD - 4053	Collection Date: 1/24/2017 5:07:00 AM
Lab ID: 1701J34-037	Matrix: Drinking Water

Analyses	Result	Reporting Limit	Qual	Units	BatchID	Dilution Factor	Date Analyzed	Analyst
Trace Elements by ICP/MS E200.8					(E200.2)			
Lead	BRL	1.00		ug/L	237149	1	01/31/2017 06:06	JR

Qualifiers:

- * Value exceeds maximum contaminant level
- BRL Below reporting limit
- H Holding times for preparation or analysis exceeded
- N Analyte not NELAC certified
- B Analyte detected in the associated method blank
- > Greater than Result value

- E Estimated (value above quantitation range)
- S Spike Recovery outside limits due to matrix
- Narr See case narrative
- NC Not confirmed
- < Less than Result value
- J Estimated value detected below Reporting Limit

Analytical Environmental Services, Inc

Date: 7-Feb-17

Client: Atlanta Environmental Mgmt	Client Sample ID: 4053-012417-RS-001-A
Project Name: DCSD - 4053	Collection Date: 1/24/2017 5:44:00 AM
Lab ID: 1701J34-038	Matrix: Drinking Water

Analyses	Result	Reporting Limit	Qual	Units	BatchID	Dilution Factor	Date Analyzed	Analyst
Trace Elements by ICP/MS E200.8					(E200.2)			
Lead	BRL	1.00		ug/L	237149	1	01/31/2017 06:12	JR

Qualifiers:

- * Value exceeds maximum contaminant level
- BRL Below reporting limit
- H Holding times for preparation or analysis exceeded
- N Analyte not NELAC certified
- B Analyte detected in the associated method blank
- > Greater than Result value

- E Estimated (value above quantitation range)
- S Spike Recovery outside limits due to matrix
- Narr See case narrative
- NC Not confirmed
- < Less than Result value
- J Estimated value detected below Reporting Limit

Analytical Environmental Services, Inc

Date: 7-Feb-17

Client: Atlanta Environmental Mgmt	Client Sample ID: 4053-012417-RS-001-B
Project Name: DCSD - 4053	Collection Date: 1/24/2017 5:45:00 AM
Lab ID: 1701J34-039	Matrix: Drinking Water

Analyses	Result	Reporting Limit	Qual	Units	BatchID	Dilution Factor	Date Analyzed	Analyst
Trace Elements by ICP/MS E200.8					(E200.2)			
Lead	BRL	1.00		ug/L	237149	1	01/31/2017 06:31	JR

Qualifiers:

- * Value exceeds maximum contaminant level
- BRL Below reporting limit
- H Holding times for preparation or analysis exceeded
- N Analyte not NELAC certified
- B Analyte detected in the associated method blank
- > Greater than Result value

- E Estimated (value above quantitation range)
- S Spike Recovery outside limits due to matrix
- Narr See case narrative
- NC Not confirmed
- < Less than Result value
- J Estimated value detected below Reporting Limit

Analytical Environmental Services, Inc

Date: 7-Feb-17

Client: Atlanta Environmental Mgmt	Client Sample ID: 4053-012417-RS-002-A
Project Name: DCSD - 4053	Collection Date: 1/24/2017 5:22:00 AM
Lab ID: 1701J34-040	Matrix: Drinking Water

Analyses	Result	Reporting Limit	Qual	Units	BatchID	Dilution Factor	Date Analyzed	Analyst
Trace Elements by ICP/MS E200.8					(E200.2)			
Lead	BRL	1.00		ug/L	237149	1	01/31/2017 06:38	JR

Qualifiers:

- * Value exceeds maximum contaminant level
- BRL Below reporting limit
- H Holding times for preparation or analysis exceeded
- N Analyte not NELAC certified
- B Analyte detected in the associated method blank
- > Greater than Result value

- E Estimated (value above quantitation range)
- S Spike Recovery outside limits due to matrix
- Narr See case narrative
- NC Not confirmed
- < Less than Result value
- J Estimated value detected below Reporting Limit

Analytical Environmental Services, Inc

Date: 7-Feb-17

Client: Atlanta Environmental Mgmt	Client Sample ID: 4053-012417-RS-002-B
Project Name: DCSD - 4053	Collection Date: 1/24/2017 5:23:00 AM
Lab ID: 1701J34-041	Matrix: Drinking Water

Analyses	Result	Reporting Limit	Qual	Units	BatchID	Dilution Factor	Date Analyzed	Analyst
Trace Elements by ICP/MS E200.8					(E200.2)			
Lead	BRL	1.00		ug/L	237088	1	01/28/2017 02:02	JS

Qualifiers:

- * Value exceeds maximum contaminant level
- BRL Below reporting limit
- H Holding times for preparation or analysis exceeded
- N Analyte not NELAC certified
- B Analyte detected in the associated method blank
- > Greater than Result value

- E Estimated (value above quantitation range)
- S Spike Recovery outside limits due to matrix
- Narr See case narrative
- NC Not confirmed
- < Less than Result value
- J Estimated value detected below Reporting Limit

Analytical Environmental Services, Inc

Date: 7-Feb-17

Client: Atlanta Environmental Mgmt	Client Sample ID: 4053-012417-RS-003-A
Project Name: DCSD - 4053	Collection Date: 1/24/2017 5:35:00 AM
Lab ID: 1701J34-042	Matrix: Drinking Water

Analyses	Result	Reporting Limit	Qual	Units	BatchID	Dilution Factor	Date Analyzed	Analyst
Trace Elements by ICP/MS E200.8					(E200.2)			
Lead	BRL	1.00		ug/L	237088	1	01/28/2017 02:09	JS

Qualifiers:

- * Value exceeds maximum contaminant level
- BRL Below reporting limit
- H Holding times for preparation or analysis exceeded
- N Analyte not NELAC certified
- B Analyte detected in the associated method blank
- > Greater than Result value

- E Estimated (value above quantitation range)
- S Spike Recovery outside limits due to matrix
- Narr See case narrative
- NC Not confirmed
- < Less than Result value
- J Estimated value detected below Reporting Limit

Analytical Environmental Services, Inc

Date: 7-Feb-17

Client: Atlanta Environmental Mgmt	Client Sample ID: 4053-012417-RS-003-B
Project Name: DCSD - 4053	Collection Date: 1/24/2017 5:36:00 AM
Lab ID: 1701J34-043	Matrix: Drinking Water

Analyses	Result	Reporting Limit	Qual	Units	BatchID	Dilution Factor	Date Analyzed	Analyst
Trace Elements by ICP/MS E200.8					(E200.2)			
Lead	BRL	1.00		ug/L	237088	1	01/28/2017 02:15	JS

Qualifiers:

- * Value exceeds maximum contaminant level
- BRL Below reporting limit
- H Holding times for preparation or analysis exceeded
- N Analyte not NELAC certified
- B Analyte detected in the associated method blank
- > Greater than Result value

- E Estimated (value above quantitation range)
- S Spike Recovery outside limits due to matrix
- Narr See case narrative
- NC Not confirmed
- < Less than Result value
- J Estimated value detected below Reporting Limit

Analytical Environmental Services, Inc

Date: 7-Feb-17

Client: Atlanta Environmental Mgmt	Client Sample ID: 4053-012417-RS-004-A
Project Name: DCSD - 4053	Collection Date: 1/24/2017 5:17:00 AM
Lab ID: 1701J34-044	Matrix: Drinking Water

Analyses	Result	Reporting Limit	Qual	Units	BatchID	Dilution Factor	Date Analyzed	Analyst
Trace Elements by ICP/MS E200.8					(E200.2)			
Lead	BRL	1.00		ug/L	237088	1	01/28/2017 02:21	JS

Qualifiers:

- * Value exceeds maximum contaminant level
- BRL Below reporting limit
- H Holding times for preparation or analysis exceeded
- N Analyte not NELAC certified
- B Analyte detected in the associated method blank
- > Greater than Result value

- E Estimated (value above quantitation range)
- S Spike Recovery outside limits due to matrix
- Narr See case narrative
- NC Not confirmed
- < Less than Result value
- J Estimated value detected below Reporting Limit

Analytical Environmental Services, Inc

Date: 7-Feb-17

Client: Atlanta Environmental Mgmt	Client Sample ID: 4053-012417-RS-004-B
Project Name: DCSD - 4053	Collection Date: 1/24/2017 5:18:00 AM
Lab ID: 1701J34-045	Matrix: Drinking Water

Analyses	Result	Reporting Limit	Qual	Units	BatchID	Dilution Factor	Date Analyzed	Analyst
Trace Elements by ICP/MS E200.8					(E200.2)			
Lead	BRL	1.00		ug/L	237088	1	01/28/2017 02:27	JS

Qualifiers:

- * Value exceeds maximum contaminant level
- BRL Below reporting limit
- H Holding times for preparation or analysis exceeded
- N Analyte not NELAC certified
- B Analyte detected in the associated method blank
- > Greater than Result value

- E Estimated (value above quantitation range)
- S Spike Recovery outside limits due to matrix
- Narr See case narrative
- NC Not confirmed
- < Less than Result value
- J Estimated value detected below Reporting Limit

Analytical Environmental Services, Inc

Date: 7-Feb-17

Client: Atlanta Environmental Mgmt	Client Sample ID: 4053-012417-TL-001-A
Project Name: DCSD - 4053	Collection Date: 1/24/2017 5:21:00 AM
Lab ID: 1701J34-046	Matrix: Drinking Water

Analyses	Result	Reporting Limit	Qual	Units	BatchID	Dilution Factor	Date Analyzed	Analyst
Trace Elements by ICP/MS E200.8					(E200.2)			
Lead	1.43	1.00		ug/L	237088	1	01/28/2017 02:34	JS

Qualifiers:

- * Value exceeds maximum contaminant level
- BRL Below reporting limit
- H Holding times for preparation or analysis exceeded
- N Analyte not NELAC certified
- B Analyte detected in the associated method blank
- > Greater than Result value

- E Estimated (value above quantitation range)
- S Spike Recovery outside limits due to matrix
- Narr See case narrative
- NC Not confirmed
- < Less than Result value
- J Estimated value detected below Reporting Limit

Analytical Environmental Services, Inc

Date: 7-Feb-17

Client: Atlanta Environmental Mgmt	Client Sample ID: 4053-012417-TL-001-B
Project Name: DCSD - 4053	Collection Date: 1/24/2017 5:23:00 AM
Lab ID: 1701J34-047	Matrix: Drinking Water

Analyses	Result	Reporting Limit	Qual	Units	BatchID	Dilution Factor	Date Analyzed	Analyst
Trace Elements by ICP/MS E200.8					(E200.2)			
Lead	1.34	1.00		ug/L	237088	1	01/28/2017 01:19	JS

Qualifiers:

- * Value exceeds maximum contaminant level
- BRL Below reporting limit
- H Holding times for preparation or analysis exceeded
- N Analyte not NELAC certified
- B Analyte detected in the associated method blank
- > Greater than Result value

- E Estimated (value above quantitation range)
- S Spike Recovery outside limits due to matrix
- Narr See case narrative
- NC Not confirmed
- < Less than Result value
- J Estimated value detected below Reporting Limit

Analytical Environmental Services, Inc

Date: 7-Feb-17

Client: Atlanta Environmental Mgmt	Client Sample ID: 4053-012417-TL-001-C
Project Name: DCSD - 4053	Collection Date: 1/24/2017 5:22:00 AM
Lab ID: 1701J34-048	Matrix: Drinking Water

Analyses	Result	Reporting Limit	Qual	Units	BatchID	Dilution Factor	Date Analyzed	Analyst
Trace Elements by ICP/MS E200.8					(E200.2)			
Lead	1.38	1.00		ug/L	237088	1	01/28/2017 02:40	JS

Qualifiers:

- * Value exceeds maximum contaminant level
- BRL Below reporting limit
- H Holding times for preparation or analysis exceeded
- N Analyte not NELAC certified
- B Analyte detected in the associated method blank
- > Greater than Result value

- E Estimated (value above quantitation range)
- S Spike Recovery outside limits due to matrix
- Narr See case narrative
- NC Not confirmed
- < Less than Result value
- J Estimated value detected below Reporting Limit

Analytical Environmental Services, Inc

Date: 7-Feb-17

Client: Atlanta Environmental Mgmt	Client Sample ID: 4053-012417-CS-001-A
Project Name: DCSD - 4053	Collection Date: 1/24/2017 5:05:00 AM
Lab ID: 1701J34-049	Matrix: Drinking Water

Analyses	Result	Reporting Limit	Qual	Units	BatchID	Dilution Factor	Date Analyzed	Analyst
Trace Elements by ICP/MS E200.8					(E200.2)			
Lead	BRL	1.00		ug/L	237088	1	01/28/2017 02:46	JS

Qualifiers:

- * Value exceeds maximum contaminant level
- BRL Below reporting limit
- H Holding times for preparation or analysis exceeded
- N Analyte not NELAC certified
- B Analyte detected in the associated method blank
- > Greater than Result value

- E Estimated (value above quantitation range)
- S Spike Recovery outside limits due to matrix
- Narr See case narrative
- NC Not confirmed
- < Less than Result value
- J Estimated value detected below Reporting Limit

Analytical Environmental Services, Inc

Date: 7-Feb-17

Client: Atlanta Environmental Mgmt	Client Sample ID: 4053-012417-CS-001-B
Project Name: DCSD - 4053	Collection Date: 1/24/2017 5:06:00 AM
Lab ID: 1701J34-050	Matrix: Drinking Water

Analyses	Result	Reporting Limit	Qual	Units	BatchID	Dilution Factor	Date Analyzed	Analyst
Trace Elements by ICP/MS E200.8					(E200.2)			
Lead	BRL	1.00		ug/L	237088	1	01/28/2017 02:52	JS

Qualifiers:

- * Value exceeds maximum contaminant level
- BRL Below reporting limit
- H Holding times for preparation or analysis exceeded
- N Analyte not NELAC certified
- B Analyte detected in the associated method blank
- > Greater than Result value

- E Estimated (value above quantitation range)
- S Spike Recovery outside limits due to matrix
- Narr See case narrative
- NC Not confirmed
- < Less than Result value
- J Estimated value detected below Reporting Limit

Analytical Environmental Services, Inc

Date: 7-Feb-17

Client: Atlanta Environmental Mgmt	Client Sample ID: 4053-012417-CS-002-A
Project Name: DCSD - 4053	Collection Date: 1/24/2017 5:07:00 AM
Lab ID: 1701J34-051	Matrix: Drinking Water

Analyses	Result	Reporting Limit	Qual	Units	BatchID	Dilution Factor	Date Analyzed	Analyst
Trace Elements by ICP/MS E200.8					(E200.2)			
Lead	BRL	1.00		ug/L	237088	1	01/28/2017 02:58	JS

Qualifiers:

- * Value exceeds maximum contaminant level
- BRL Below reporting limit
- H Holding times for preparation or analysis exceeded
- N Analyte not NELAC certified
- B Analyte detected in the associated method blank
- > Greater than Result value

- E Estimated (value above quantitation range)
- S Spike Recovery outside limits due to matrix
- Narr See case narrative
- NC Not confirmed
- < Less than Result value
- J Estimated value detected below Reporting Limit

Analytical Environmental Services, Inc

Date: 7-Feb-17

Client: Atlanta Environmental Mgmt	Client Sample ID: 4053-012417-CS-002-B
Project Name: DCSD - 4053	Collection Date: 1/24/2017 5:08:00 AM
Lab ID: 1701J34-052	Matrix: Drinking Water

Analyses	Result	Reporting Limit	Qual	Units	BatchID	Dilution Factor	Date Analyzed	Analyst
Trace Elements by ICP/MS E200.8					(E200.2)			
Lead	BRL	1.00		ug/L	237088	1	01/28/2017 03:17	JS

Qualifiers:

- * Value exceeds maximum contaminant level
- BRL Below reporting limit
- H Holding times for preparation or analysis exceeded
- N Analyte not NELAC certified
- B Analyte detected in the associated method blank
- > Greater than Result value

- E Estimated (value above quantitation range)
- S Spike Recovery outside limits due to matrix
- Narr See case narrative
- NC Not confirmed
- < Less than Result value
- J Estimated value detected below Reporting Limit

Analytical Environmental Services, Inc

Date: 7-Feb-17

Client: Atlanta Environmental Mgmt	Client Sample ID: 4053-012417-IM-001-A
Project Name: DCSD - 4053	Collection Date: 1/24/2017 5:10:00 AM
Lab ID: 1701J34-053	Matrix: Drinking Water

Analyses	Result	Reporting Limit	Qual	Units	BatchID	Dilution Factor	Date Analyzed	Analyst
Trace Elements by ICP/MS E200.8					(E200.2)			
Lead	BRL	1.00		ug/L	237088	1	01/28/2017 03:23	JS

Qualifiers:

- * Value exceeds maximum contaminant level
- BRL Below reporting limit
- H Holding times for preparation or analysis exceeded
- N Analyte not NELAC certified
- B Analyte detected in the associated method blank
- > Greater than Result value

- E Estimated (value above quantitation range)
- S Spike Recovery outside limits due to matrix
- Narr See case narrative
- NC Not confirmed
- < Less than Result value
- J Estimated value detected below Reporting Limit

Analytical Environmental Services, Inc

Date: 7-Feb-17

Client: Atlanta Environmental Mgmt	Client Sample ID: 4053-012417-IM-002-A
Project Name: DCSD - 4053	Collection Date: 1/24/2017 5:43:00 AM
Lab ID: 1701J34-054	Matrix: Drinking Water

Analyses	Result	Reporting Limit	Qual	Units	BatchID	Dilution Factor	Date Analyzed	Analyst
Trace Elements by ICP/MS E200.8					(E200.2)			
Lead	BRL	1.00		ug/L	237088	1	01/28/2017 03:29	JS

Qualifiers:

- * Value exceeds maximum contaminant level
- BRL Below reporting limit
- H Holding times for preparation or analysis exceeded
- N Analyte not NELAC certified
- B Analyte detected in the associated method blank
- > Greater than Result value

- E Estimated (value above quantitation range)
- S Spike Recovery outside limits due to matrix
- Narr See case narrative
- NC Not confirmed
- < Less than Result value
- J Estimated value detected below Reporting Limit

Analytical Environmental Services, Inc

Date: 7-Feb-17

Client: Atlanta Environmental Mgmt	Client Sample ID: 4053-012417-SC-001-A
Project Name: DCSD - 4053	Collection Date: 1/24/2017 4:54:00 AM
Lab ID: 1701J34-055	Matrix: Drinking Water

Analyses	Result	Reporting Limit	Qual	Units	BatchID	Dilution Factor	Date Analyzed	Analyst
Trace Elements by ICP/MS E200.8					(E200.2)			
Lead	BRL	1.00		ug/L	237088	1	01/28/2017 03:36	JS

Qualifiers:

- * Value exceeds maximum contaminant level
- BRL Below reporting limit
- H Holding times for preparation or analysis exceeded
- N Analyte not NELAC certified
- B Analyte detected in the associated method blank
- > Greater than Result value

- E Estimated (value above quantitation range)
- S Spike Recovery outside limits due to matrix
- Narr See case narrative
- NC Not confirmed
- < Less than Result value
- J Estimated value detected below Reporting Limit

Analytical Environmental Services, Inc.

Sample/Cooler Receipt Checklist

Client Atlanta Env. Mgmt

Work Order Number 1701J34

Checklist completed by Alexandra Signature Date 1/24/17

Carrier name: FedEx UPS Courier Client US Mail Other

Shipping container/cooler in good condition? Yes No Not Present

Custody seals intact on shipping container/cooler? Yes No Not Present

Custody seals intact on sample bottles? Yes No Not Present

Container/Temp Blank temperature in compliance? (0°≤6°C)* Yes No

Cooler #1 5.2°c Cooler #2 _____ Cooler #3 _____ Cooler #4 _____ Cooler#5 _____ Cooler #6 _____

Chain of custody present? Yes No

Chain of custody signed when relinquished and received? Yes No

Chain of custody agrees with sample labels? Yes No

Samples in proper container/bottle? Yes No

Sample containers intact? Yes No

Sufficient sample volume for indicated test? Yes No

All samples received within holding time? Yes No

Was TAT marked on the COC? Yes No

Proceed with Standard TAT as per project history? Yes No Not Applicable

Water - VOA vials have zero headspace? No VOA vials submitted Yes No

Water - pH acceptable upon receipt? Yes No Not Applicable
Adjusted? AT 1/24 Checked by AT

Sample Condition: Good Other(Explain) _____

(For diffusive samples or AIHA lead) Is a known blank included? Yes No

See Case Narrative for resolution of the Non-Conformance.

* Samples do not have to comply with the given range for certain parameters.

Client: Atlanta Environmental Mgmt
Project Name: DCSD - 4053
Workorder: 1701J34

ANALYTICAL QC SUMMARY REPORT

BatchID: 237088

Sample ID: MB-237088	Client ID:	Units: ug/L	Prep Date: 01/27/2017	Run No: 335373							
SampleType: MBLK	TestCode: Trace Elements by ICP/MS E200.8	BatchID: 237088	Analysis Date: 01/28/2017	Seq No: 7317298							
Analyte	Result	RPT Limit	SPK value	SPK Ref Val	%REC	Low Limit	High Limit	RPD Ref Val	%RPD	RPD Limit	Qual

Lead BRL 1.00

Sample ID: LCS-237088	Client ID:	Units: ug/L	Prep Date: 01/27/2017	Run No: 335373							
SampleType: LCS	TestCode: Trace Elements by ICP/MS E200.8	BatchID: 237088	Analysis Date: 01/28/2017	Seq No: 7317299							
Analyte	Result	RPT Limit	SPK value	SPK Ref Val	%REC	Low Limit	High Limit	RPD Ref Val	%RPD	RPD Limit	Qual

Lead 96.44 1.00 100.0 96.4 85 115

Sample ID: 1701177-001AMS	Client ID:	Units: ug/L	Prep Date: 01/27/2017	Run No: 335373							
SampleType: MS	TestCode: Trace Elements by ICP/MS E200.8	BatchID: 237088	Analysis Date: 01/28/2017	Seq No: 7317301							
Analyte	Result	RPT Limit	SPK value	SPK Ref Val	%REC	Low Limit	High Limit	RPD Ref Val	%RPD	RPD Limit	Qual

Lead 102.6 1.00 100.0 0.1440 102 70 130

Sample ID: 1701J34-047AMS	Client ID: 4053-012417-TL-001-B	Units: ug/L	Prep Date: 01/27/2017	Run No: 335373							
SampleType: MS	TestCode: Trace Elements by ICP/MS E200.8	BatchID: 237088	Analysis Date: 01/28/2017	Seq No: 7317304							
Analyte	Result	RPT Limit	SPK value	SPK Ref Val	%REC	Low Limit	High Limit	RPD Ref Val	%RPD	RPD Limit	Qual

Lead 101.8 1.00 100.0 1.343 100 70 130

Sample ID: 1701177-001AMSD	Client ID:	Units: ug/L	Prep Date: 01/27/2017	Run No: 335373							
SampleType: MSD	TestCode: Trace Elements by ICP/MS E200.8	BatchID: 237088	Analysis Date: 01/28/2017	Seq No: 7317302							
Analyte	Result	RPT Limit	SPK value	SPK Ref Val	%REC	Low Limit	High Limit	RPD Ref Val	%RPD	RPD Limit	Qual

Lead 100.1 1.00 100.0 0.1440 100.0 70 130 102.6 2.47 20

Qualifiers: > Greater than Result value < Less than Result value B Analyte detected in the associated method blank
 BRL Below reporting limit E Estimated (value above quantitation range) H Holding times for preparation or analysis exceeded
 J Estimated value detected below Reporting Limit N Analyte not NELAC certified R RPD outside limits due to matrix
 Rpt Lim Reporting Limit S Spike Recovery outside limits due to matrix

Client: Atlanta Environmental Mgmt
Project Name: DCSD - 4053
Workorder: 1701J34

ANALYTICAL QC SUMMARY REPORT

BatchID: 237148

Sample ID: MB-237148	Client ID:	Units: ug/L	Prep Date: 01/30/2017	Run No: 335389							
SampleType: MBLK	TestCode: Trace Elements by ICP/MS E200.8	BatchID: 237148	Analysis Date: 01/31/2017	Seq No: 7317885							
Analyte	Result	RPT Limit	SPK value	SPK Ref Val	%REC	Low Limit	High Limit	RPD Ref Val	%RPD	RPD Limit	Qual

Lead BRL 1.00

Sample ID: LCS-237148	Client ID:	Units: ug/L	Prep Date: 01/30/2017	Run No: 335389							
SampleType: LCS	TestCode: Trace Elements by ICP/MS E200.8	BatchID: 237148	Analysis Date: 01/31/2017	Seq No: 7317886							
Analyte	Result	RPT Limit	SPK value	SPK Ref Val	%REC	Low Limit	High Limit	RPD Ref Val	%RPD	RPD Limit	Qual

Lead 96.81 1.00 100.0 96.8 85 115

Sample ID: 1701J34-001AMS	Client ID: 4053-012417-DF-001-A	Units: ug/L	Prep Date: 01/30/2017	Run No: 335389							
SampleType: MS	TestCode: Trace Elements by ICP/MS E200.8	BatchID: 237148	Analysis Date: 01/31/2017	Seq No: 7317890							
Analyte	Result	RPT Limit	SPK value	SPK Ref Val	%REC	Low Limit	High Limit	RPD Ref Val	%RPD	RPD Limit	Qual

Lead 96.56 1.00 100.0 0.06613 96.5 70 130

Sample ID: 1701J34-011AMS	Client ID: 4053-012417-DF-007-A	Units: ug/L	Prep Date: 01/30/2017	Run No: 335389							
SampleType: MS	TestCode: Trace Elements by ICP/MS E200.8	BatchID: 237148	Analysis Date: 01/31/2017	Seq No: 7317893							
Analyte	Result	RPT Limit	SPK value	SPK Ref Val	%REC	Low Limit	High Limit	RPD Ref Val	%RPD	RPD Limit	Qual

Lead 93.24 1.00 100.0 1.246 92.0 70 130

Sample ID: 1701J34-001AMSD	Client ID: 4053-012417-DF-001-A	Units: ug/L	Prep Date: 01/30/2017	Run No: 335389							
SampleType: MSD	TestCode: Trace Elements by ICP/MS E200.8	BatchID: 237148	Analysis Date: 01/31/2017	Seq No: 7317891							
Analyte	Result	RPT Limit	SPK value	SPK Ref Val	%REC	Low Limit	High Limit	RPD Ref Val	%RPD	RPD Limit	Qual

Lead 97.08 1.00 100.0 0.06613 97.0 70 130 96.56 0.531 20

Qualifiers: > Greater than Result value < Less than Result value B Analyte detected in the associated method blank
 BRL Below reporting limit E Estimated (value above quantitation range) H Holding times for preparation or analysis exceeded
 J Estimated value detected below Reporting Limit N Analyte not NELAC certified R RPD outside limits due to matrix
 Rpt Lim Reporting Limit S Spike Recovery outside limits due to matrix

Client: Atlanta Environmental Mgmt
Project Name: DCSD - 4053
Workorder: 1701J34

ANALYTICAL QC SUMMARY REPORT

BatchID: 237149

Sample ID: MB-237149	Client ID:	Units: ug/L	Prep Date: 01/30/2017	Run No: 335390							
SampleType: MBLK	TestCode: Trace Elements by ICP/MS E200.8	BatchID: 237149	Analysis Date: 01/31/2017	Seq No: 7317928							
Analyte	Result	RPT Limit	SPK value	SPK Ref Val	%REC	Low Limit	High Limit	RPD Ref Val	%RPD	RPD Limit	Qual

Lead BRL 1.00

Sample ID: LCS-237149	Client ID:	Units: ug/L	Prep Date: 01/30/2017	Run No: 335390							
SampleType: LCS	TestCode: Trace Elements by ICP/MS E200.8	BatchID: 237149	Analysis Date: 01/31/2017	Seq No: 7317929							
Analyte	Result	RPT Limit	SPK value	SPK Ref Val	%REC	Low Limit	High Limit	RPD Ref Val	%RPD	RPD Limit	Qual

Lead 95.42 1.00 100.0 95.4 85 115

Sample ID: 1701J34-021AMS	Client ID: 4053-012417-DF-011-B	Units: ug/L	Prep Date: 01/30/2017	Run No: 335390							
SampleType: MS	TestCode: Trace Elements by ICP/MS E200.8	BatchID: 237149	Analysis Date: 01/31/2017	Seq No: 7317934							
Analyte	Result	RPT Limit	SPK value	SPK Ref Val	%REC	Low Limit	High Limit	RPD Ref Val	%RPD	RPD Limit	Qual

Lead 96.12 1.00 100.0 0.08527 96.0 70 130

Sample ID: 1701J34-031AMS	Client ID: 4053-012417-DF-018-B	Units: ug/L	Prep Date: 01/30/2017	Run No: 335390							
SampleType: MS	TestCode: Trace Elements by ICP/MS E200.8	BatchID: 237149	Analysis Date: 01/31/2017	Seq No: 7317937							
Analyte	Result	RPT Limit	SPK value	SPK Ref Val	%REC	Low Limit	High Limit	RPD Ref Val	%RPD	RPD Limit	Qual

Lead 90.11 1.00 100.0 0.03754 90.1 70 130

Sample ID: 1701J34-021AMSD	Client ID: 4053-012417-DF-011-B	Units: ug/L	Prep Date: 01/30/2017	Run No: 335390							
SampleType: MSD	TestCode: Trace Elements by ICP/MS E200.8	BatchID: 237149	Analysis Date: 01/31/2017	Seq No: 7317935							
Analyte	Result	RPT Limit	SPK value	SPK Ref Val	%REC	Low Limit	High Limit	RPD Ref Val	%RPD	RPD Limit	Qual

Lead 92.98 1.00 100.0 0.08527 92.9 70 130 96.12 3.33 20

Qualifiers: > Greater than Result value < Less than Result value B Analyte detected in the associated method blank
 BRL Below reporting limit E Estimated (value above quantitation range) H Holding times for preparation or analysis exceeded
 J Estimated value detected below Reporting Limit N Analyte not NELAC certified R RPD outside limits due to matrix
 Rpt Lim Reporting Limit S Spike Recovery outside limits due to matrix

Leona Miles

From: NoReply@aesatlanta.net
Sent: Thursday, November 2, 2017 9:07 AM
To: leona-miles@aem-net.com; tim-royer@aem-net.com
Subject: DCSD - 4053
Attachments: 1710K62_REPORT.pdf; 1710K62Invoice.pdf

Please see attached. If you have any questions or need further assistance please contact your project manager at 770-457-8177.

AES Reporting System

ANALYTICAL ENVIRONMENTAL SERVICES, INC.
3080 Presidential Drive ATLANTA, GA 30340
Tel:770-457-8177 Fax:770-457-8188
<http://www.aesatlanta.com>

NOTICE OF CONFIDENTIALITY: The information in this email and / or attachments may be legally privileged and is confidential information intended for the use of the individual or entity named in the email address. If the reader of this message is not the intended recipient, you are hereby notified that any use, dissemination, distribution, or copy of this email and / or attachments is strictly prohibited. If you have received this email in error, please notify Analytical Environmental Services Customer Service by telephone at (770) 457-8177 or by email at info@aesatlanta.com <<mailto:info@aesatlanta.com>> and delete the message. Thank you



ANALYTICAL ENVIRONMENTAL SERVICES, INC.

November 02, 2017

Leona Miles
Atlanta Environmental Mgmt
2580 NE Expressway
Atlanta GA 30345

RE: DCSD - 4053

Dear Leona Miles:

Order No: 1710K62

Analytical Environmental Services, Inc. received 15 samples on 10/20/2017 12:25:00 PM for the analyses presented in following report.

No problems were encountered during the analyses. Additionally, all results for the associated Quality Control samples were within EPA and/or AES established limits. Any discrepancies associated with the analyses contained herein will be noted and submitted in the form of a project Case Narrative.

AES's accreditations are as follows:

-NELAP/State of Florida Laboratory ID E87582 for analysis of Non-Potable Water, Solid & Chemical Materials, Air & Emissions Volatile Organics, and Drinking Water Microbiology & Metals, effective 07/01/17-06/30/18.

State of Georgia, Department of Natural Resources ID #800 for analysis of Drinking Water Metals, effective 07/01/17-06/30/18 and Total Coliforms/ E. coli, effective 04/25/17-04/24/20.

-NELAP/Louisiana Agency Interest No. 100818 for or analysis of Non-Potable Water and Solid & Chemical Materials, effective 07/01/17-06/30/18.

-AIHA-LAP, LLC Laboratory ID: 100671 for Industrial Hygiene samples (Organics, Metals, PCM Asbestos, Gravimetric), Environmental Lead (Paint, Soil, Dust Wipes, Air), and Environmental Microbiology (Fungal) Direct Examination, effective until 11/01/17.

These results relate only to the items tested. This report may only be reproduced in full.

If you have any questions regarding these test results, please feel free to call.

Sincerely,

Ioana Pacurar
Project Manager



ANALYTICAL ENVIRONMENTAL SERVICES, INC

3080 Presidential Drive, Atlanta GA 30340-3704

TEL.: (770) 457-8177 / TOLL-FREE (800) 972-4889 / FAX: (770) 457-8188

CHAIN OF CUSTODY

Work Order: 1710K62

Date: 10/20/17 Page 1 of 1

COMPANY: Atlanta Environmental Management Inc		ADDRESS: 2580 Northeast Expressway NE Atlanta, GA 30345			ANALYSIS REQUESTED										Visit our website www.aesatlanta.com to check on the status of your results, place bottle orders, etc.		No # of Containers		
PHONE: 404-329-9006		FAX: 404-329-2057			Lead (200.8)	PRESERVATION (See codes)												REMARKS	
SAMPLED BY: <i>Andy Jensen</i>		SIGNATURE: <i>Alaska</i>																	
#	SAMPLE ID	DATE	TIME	Grab	Composite	Matrix (See codes)	1												
1	4053-102017-CS-003-A	10/20/17	0531	X		DW	X												
2	4053-102017-CS-003-B		0532	X		DW	X												
3	4053-102017-CS-004-A		0533	X		DW	X												
4	4053-102017-CS-004-B		0534	X		DW	X												
5	4053-102017-CS-006-A		0558	X		DW	X												
6	4053-102017-CS-006-B		0559	X		DW	X												
7	4053-102017-CS-007-A		0600	X		DW	X												
8	4053-102017-CS-007-B		0601	X		DW	X												
9	4053-102017-CS-008-A		0602	X		DW	X												
10	4053-102017-CS-008-B		0603	X		DW	X												
11	4053-102017-JM-003-A		0541	X		DW	X												
12	4053-102017-DP-013-A		0547	X		DW	X												
13	4053-102017-DP-013-B		0548	X		DW	X												
14	4053-102017-DP-005-A		0612	X		DW	X												
15	4053-102017-DP-005-B		0613	X		DW	X												
RELINQUISHED BY		DATE/TIME		RECEIVED BY		DATE/TIME		PROJECT INFORMATION										RECEIPT	
1: <i>Alaska</i>		10/20/17 0750		2: <i>Jing</i>		10/20/17 0750		PROJECT NAME: DCSD										Total # of Containers	
2: <i>Jing</i>		10/20/17 1225		3: <i>Alaska</i>		10/20/17 1225		PROJECT #: 1561-1601										Turnaround Time Request	
3:				3:				SITE ADDRESS: 4053										○ Standard 5 Business Days	
SPECIAL INSTRUCTIONS/COMMENTS:				SHIPMENT METHOD				SEND REPORT TO: leona-miles@aem-net.com										○ 2 Business Day Rush	
preserve at lab				OUT		VIA:		INVOICE TO: Leona Miles										○ Next Business Day Rush	
				IN		VIA:		(IF DIFFERENT FROM ABOVE)										○ Same Day Rush (auth req.)	
				CLIENT		FedEx UPS MAIL COURIER		QUOTE #:										● Other: 10 business Days	
				GREYHOUND		OTHER		PO#:										STATE PROGRAM (if any):	

SAMPLES RECEIVED AFTER 3PM OR SATURDAY ARE CONSIDERED AS RECEIVED ON THE NEXT BUSINESS DAY; IF NO TAT IS MARKED ON COC AES WILL PROCEED AS STANDARD TAT.

SAMPLES ARE DISPOSED OF 30 DAYS AFTER COMPLETION OF REPORT UNLESS OTHER ARRANGEMENTS ARE MADE.

MATRIX CODES: A = Air GW = Groundwater SE = Sediment SO = Soil SW = Surface Water DW = Drinking Water W = Water (Blanks) O = Other (specify)

PRESERVATIVE CODES: H+I = Hydrochloric acid + ice I = Ice only N = Nitric acid S+I = Sulfuric acid + ice S/M+I = Sodium Bisulfate/Methanol + ice O = Other (specify) NA = None

Analytical Environmental Services, Inc

Date: 2-Nov-17

Client: Atlanta Environmental Mgmt	Client Sample ID: 4053-102017-CS-003-A
Project Name: DCSD - 4053	Collection Date: 10/20/2017 5:31:00 AM
Lab ID: 1710K62-001	Matrix: Drinking Water

Analyses	Result	Reporting Limit	Qual	Units	BatchID	Dilution Factor	Date Analyzed	Analyst
Trace Elements by ICP/MS E200.8								
				(E200.2)				
Lead	BRL	1.00		ug/L	250367	1	10/25/2017 16:40	TA

Qualifiers:

- * Value exceeds maximum contaminant level
- BRL Below reporting limit
- H Holding times for preparation or analysis exceeded
- N Analyte not NELAC certified
- B Analyte detected in the associated method blank
- > Greater than Result value

- E Estimated (value above quantitation range)
- S Spike Recovery outside limits due to matrix
- Narr See case narrative
- NC Not confirmed
- < Less than Result value
- J Estimated value detected below Reporting Limit

Analytical Environmental Services, Inc

Date: 2-Nov-17

Client: Atlanta Environmental Mgmt	Client Sample ID: 4053-102017-CS-003-B
Project Name: DCSD - 4053	Collection Date: 10/20/2017 5:32:00 AM
Lab ID: 1710K62-002	Matrix: Drinking Water

Analyses	Result	Reporting Limit	Qual	Units	BatchID	Dilution Factor	Date Analyzed	Analyst
Trace Elements by ICP/MS E200.8					(E200.2)			
Lead	BRL	1.00		ug/L	250367	1	10/25/2017 16:51	TA

Qualifiers:

- * Value exceeds maximum contaminant level
- BRL Below reporting limit
- H Holding times for preparation or analysis exceeded
- N Analyte not NELAC certified
- B Analyte detected in the associated method blank
- > Greater than Result value

- E Estimated (value above quantitation range)
- S Spike Recovery outside limits due to matrix
- Narr See case narrative
- NC Not confirmed
- < Less than Result value
- J Estimated value detected below Reporting Limit

Analytical Environmental Services, Inc

Date: 2-Nov-17

Client: Atlanta Environmental Mgmt	Client Sample ID: 4053-102017-CS-004-A
Project Name: DCSD - 4053	Collection Date: 10/20/2017 5:33:00 AM
Lab ID: 1710K62-003	Matrix: Drinking Water

Analyses	Result	Reporting Limit	Qual	Units	BatchID	Dilution Factor	Date Analyzed	Analyst
Trace Elements by ICP/MS E200.8					(E200.2)			
Lead	BRL	1.00		ug/L	250398	1	10/27/2017 16:45	TA

Qualifiers:

- * Value exceeds maximum contaminant level
- BRL Below reporting limit
- H Holding times for preparation or analysis exceeded
- N Analyte not NELAC certified
- B Analyte detected in the associated method blank
- > Greater than Result value

- E Estimated (value above quantitation range)
- S Spike Recovery outside limits due to matrix
- Narr See case narrative
- NC Not confirmed
- < Less than Result value
- J Estimated value detected below Reporting Limit

Analytical Environmental Services, Inc

Date: 2-Nov-17

Client: Atlanta Environmental Mgmt	Client Sample ID: 4053-102017-CS-004-B
Project Name: DCSD - 4053	Collection Date: 10/20/2017 5:34:00 AM
Lab ID: 1710K62-004	Matrix: Drinking Water

Analyses	Result	Reporting Limit	Qual	Units	BatchID	Dilution Factor	Date Analyzed	Analyst
Trace Elements by ICP/MS E200.8					(E200.2)			
Lead	BRL	1.00		ug/L	250367	1	10/25/2017 16:56	TA

Qualifiers:

- * Value exceeds maximum contaminant level
- BRL Below reporting limit
- H Holding times for preparation or analysis exceeded
- N Analyte not NELAC certified
- B Analyte detected in the associated method blank
- > Greater than Result value

- E Estimated (value above quantitation range)
- S Spike Recovery outside limits due to matrix
- Narr See case narrative
- NC Not confirmed
- < Less than Result value
- J Estimated value detected below Reporting Limit

Analytical Environmental Services, Inc

Date: 2-Nov-17

Client: Atlanta Environmental Mgmt	Client Sample ID: 4053-102017-CS-006-A
Project Name: DCSD - 4053	Collection Date: 10/20/2017 5:58:00 AM
Lab ID: 1710K62-005	Matrix: Drinking Water

Analyses	Result	Reporting Limit	Qual	Units	BatchID	Dilution Factor	Date Analyzed	Analyst
Trace Elements by ICP/MS E200.8					(E200.2)			
Lead	BRL	1.00		ug/L	250367	1	10/25/2017 16:58	TA

Qualifiers:

- * Value exceeds maximum contaminant level
- BRL Below reporting limit
- H Holding times for preparation or analysis exceeded
- N Analyte not NELAC certified
- B Analyte detected in the associated method blank
- > Greater than Result value

- E Estimated (value above quantitation range)
- S Spike Recovery outside limits due to matrix
- Narr See case narrative
- NC Not confirmed
- < Less than Result value
- J Estimated value detected below Reporting Limit

Analytical Environmental Services, Inc

Date: 2-Nov-17

Client: Atlanta Environmental Mgmt	Client Sample ID: 4053-102017-CS-006-B
Project Name: DCSD - 4053	Collection Date: 10/20/2017 5:59:00 AM
Lab ID: 1710K62-006	Matrix: Drinking Water

Analyses	Result	Reporting Limit	Qual	Units	BatchID	Dilution Factor	Date Analyzed	Analyst
Trace Elements by ICP/MS E200.8								
				(E200.2)				
Lead	BRL	1.00		ug/L	250367	1	10/25/2017 16:59	TA

Qualifiers:

- * Value exceeds maximum contaminant level
- BRL Below reporting limit
- H Holding times for preparation or analysis exceeded
- N Analyte not NELAC certified
- B Analyte detected in the associated method blank
- > Greater than Result value

- E Estimated (value above quantitation range)
- S Spike Recovery outside limits due to matrix
- Narr See case narrative
- NC Not confirmed
- < Less than Result value
- J Estimated value detected below Reporting Limit

Analytical Environmental Services, Inc

Date: 2-Nov-17

Client: Atlanta Environmental Mgmt	Client Sample ID: 4053-102017-CS-007-A
Project Name: DCSD - 4053	Collection Date: 10/20/2017 6:00:00 AM
Lab ID: 1710K62-007	Matrix: Drinking Water

Analyses	Result	Reporting Limit	Qual	Units	BatchID	Dilution Factor	Date Analyzed	Analyst
Trace Elements by ICP/MS E200.8					(E200.2)			
Lead	BRL	1.00		ug/L	250367	1	10/25/2017 17:01	TA

Qualifiers:

- * Value exceeds maximum contaminant level
- BRL Below reporting limit
- H Holding times for preparation or analysis exceeded
- N Analyte not NELAC certified
- B Analyte detected in the associated method blank
- > Greater than Result value

- E Estimated (value above quantitation range)
- S Spike Recovery outside limits due to matrix
- Narr See case narrative
- NC Not confirmed
- < Less than Result value
- J Estimated value detected below Reporting Limit

Analytical Environmental Services, Inc

Date: 2-Nov-17

Client: Atlanta Environmental Mgmt	Client Sample ID: 4053-102017-CS-007-B
Project Name: DCSD - 4053	Collection Date: 10/20/2017 6:01:00 AM
Lab ID: 1710K62-008	Matrix: Drinking Water

Analyses	Result	Reporting Limit	Qual	Units	BatchID	Dilution Factor	Date Analyzed	Analyst
Trace Elements by ICP/MS E200.8					(E200.2)			
Lead	BRL	1.00		ug/L	250367	1	10/25/2017 17:02	TA

Qualifiers:

- * Value exceeds maximum contaminant level
- BRL Below reporting limit
- H Holding times for preparation or analysis exceeded
- N Analyte not NELAC certified
- B Analyte detected in the associated method blank
- > Greater than Result value

- E Estimated (value above quantitation range)
- S Spike Recovery outside limits due to matrix
- Narr See case narrative
- NC Not confirmed
- < Less than Result value
- J Estimated value detected below Reporting Limit

Analytical Environmental Services, Inc

Date: 2-Nov-17

Client: Atlanta Environmental Mgmt	Client Sample ID: 4053-102017-CS-008-A
Project Name: DCSD - 4053	Collection Date: 10/20/2017 6:02:00 AM
Lab ID: 1710K62-009	Matrix: Drinking Water

Analyses	Result	Reporting Limit	Qual	Units	BatchID	Dilution Factor	Date Analyzed	Analyst
Trace Elements by ICP/MS E200.8					(E200.2)			
Lead	BRL	1.00		ug/L	250367	1	10/25/2017 17:04	TA

Qualifiers:

- * Value exceeds maximum contaminant level
- BRL Below reporting limit
- H Holding times for preparation or analysis exceeded
- N Analyte not NELAC certified
- B Analyte detected in the associated method blank
- > Greater than Result value

- E Estimated (value above quantitation range)
- S Spike Recovery outside limits due to matrix
- Narr See case narrative
- NC Not confirmed
- < Less than Result value
- J Estimated value detected below Reporting Limit

Analytical Environmental Services, Inc

Date: 2-Nov-17

Client: Atlanta Environmental Mgmt	Client Sample ID: 4053-102017-CS-008-B
Project Name: DCSD - 4053	Collection Date: 10/20/2017 6:03:00 AM
Lab ID: 1710K62-010	Matrix: Drinking Water

Analyses	Result	Reporting Limit	Qual	Units	BatchID	Dilution Factor	Date Analyzed	Analyst
Trace Elements by ICP/MS E200.8					(E200.2)			
Lead	BRL	1.00		ug/L	250367	1	10/25/2017 17:06	TA

Qualifiers:

- * Value exceeds maximum contaminant level
- BRL Below reporting limit
- H Holding times for preparation or analysis exceeded
- N Analyte not NELAC certified
- B Analyte detected in the associated method blank
- > Greater than Result value

- E Estimated (value above quantitation range)
- S Spike Recovery outside limits due to matrix
- Narr See case narrative
- NC Not confirmed
- < Less than Result value
- J Estimated value detected below Reporting Limit

Analytical Environmental Services, Inc

Date: 2-Nov-17

Client: Atlanta Environmental Mgmt	Client Sample ID: 4053-102017-IM-003-A
Project Name: DCSD - 4053	Collection Date: 10/20/2017 5:41:00 AM
Lab ID: 1710K62-011	Matrix: Drinking Water

Analyses	Result	Reporting Limit	Qual	Units	BatchID	Dilution Factor	Date Analyzed	Analyst
Trace Elements by ICP/MS E200.8					(E200.2)			
Lead	BRL	1.00		ug/L	250367	1	10/25/2017 17:07	TA

Qualifiers:

- * Value exceeds maximum contaminant level
- BRL Below reporting limit
- H Holding times for preparation or analysis exceeded
- N Analyte not NELAC certified
- B Analyte detected in the associated method blank
- > Greater than Result value

- E Estimated (value above quantitation range)
- S Spike Recovery outside limits due to matrix
- Narr See case narrative
- NC Not confirmed
- < Less than Result value
- J Estimated value detected below Reporting Limit

Analytical Environmental Services, Inc

Date: 2-Nov-17

Client: Atlanta Environmental Mgmt	Client Sample ID: 4053-102017-DF-013-A
Project Name: DCSD - 4053	Collection Date: 10/20/2017 5:47:00 AM
Lab ID: 1710K62-012	Matrix: Drinking Water

Analyses	Result	Reporting Limit	Qual	Units	BatchID	Dilution Factor	Date Analyzed	Analyst
Trace Elements by ICP/MS E200.8					(E200.2)			
Lead	BRL	1.00		ug/L	250367	1	10/25/2017 16:45	TA

Qualifiers:

- * Value exceeds maximum contaminant level
- BRL Below reporting limit
- H Holding times for preparation or analysis exceeded
- N Analyte not NELAC certified
- B Analyte detected in the associated method blank
- > Greater than Result value

- E Estimated (value above quantitation range)
- S Spike Recovery outside limits due to matrix
- Narr See case narrative
- NC Not confirmed
- < Less than Result value
- J Estimated value detected below Reporting Limit

Analytical Environmental Services, Inc

Date: 2-Nov-17

Client: Atlanta Environmental Mgmt	Client Sample ID: 4053-102017-DF-013-B
Project Name: DCSD - 4053	Collection Date: 10/20/2017 5:48:00 AM
Lab ID: 1710K62-013	Matrix: Drinking Water

Analyses	Result	Reporting Limit	Qual	Units	BatchID	Dilution Factor	Date Analyzed	Analyst
Trace Elements by ICP/MS E200.8					(E200.2)			
Lead	BRL	1.00		ug/L	250367	1	10/25/2017 17:09	TA

Qualifiers:

- * Value exceeds maximum contaminant level
- BRL Below reporting limit
- H Holding times for preparation or analysis exceeded
- N Analyte not NELAC certified
- B Analyte detected in the associated method blank
- > Greater than Result value

- E Estimated (value above quantitation range)
- S Spike Recovery outside limits due to matrix
- Narr See case narrative
- NC Not confirmed
- < Less than Result value
- J Estimated value detected below Reporting Limit

Analytical Environmental Services, Inc

Date: 2-Nov-17

Client: Atlanta Environmental Mgmt	Client Sample ID: 4053-102017-DF-005-A
Project Name: DCSD - 4053	Collection Date: 10/20/2017 6:12:00 AM
Lab ID: 1710K62-014	Matrix: Drinking Water

Analyses	Result	Reporting Limit	Qual	Units	BatchID	Dilution Factor	Date Analyzed	Analyst
Trace Elements by ICP/MS E200.8					(E200.2)			
Lead	BRL	1.00		ug/L	250367	1	10/25/2017 17:11	TA

Qualifiers:

- * Value exceeds maximum contaminant level
- BRL Below reporting limit
- H Holding times for preparation or analysis exceeded
- N Analyte not NELAC certified
- B Analyte detected in the associated method blank
- > Greater than Result value

- E Estimated (value above quantitation range)
- S Spike Recovery outside limits due to matrix
- Narr See case narrative
- NC Not confirmed
- < Less than Result value
- J Estimated value detected below Reporting Limit

Analytical Environmental Services, Inc

Date: 2-Nov-17

Client: Atlanta Environmental Mgmt	Client Sample ID: 4053-102017-DF-005-B
Project Name: DCSD - 4053	Collection Date: 10/20/2017 6:13:00 AM
Lab ID: 1710K62-015	Matrix: Drinking Water

Analyses	Result	Reporting Limit	Qual	Units	BatchID	Dilution Factor	Date Analyzed	Analyst
Trace Elements by ICP/MS E200.8					(E200.2)			
Lead	BRL	1.00		ug/L	250367	1	10/25/2017 17:15	TA

Qualifiers:

- * Value exceeds maximum contaminant level
- BRL Below reporting limit
- H Holding times for preparation or analysis exceeded
- N Analyte not NELAC certified
- B Analyte detected in the associated method blank
- > Greater than Result value

- E Estimated (value above quantitation range)
- S Spike Recovery outside limits due to matrix
- Narr See case narrative
- NC Not confirmed
- < Less than Result value
- J Estimated value detected below Reporting Limit

SAMPLE/COOLER RECEIPT CHECKLIST

1. Client Name: _____

AES Work Order Number: _____

2. Carrier: FedEx UPS USPS Client Courier Other _____

	Yes	No	N/A	Details	Comments
3. Shipping container/cooler received in good condition?				damaged <input type="checkbox"/> leaking <input type="checkbox"/> other <input type="checkbox"/>	
4. Custody seals present on shipping container?					
5. Custody seals intact on shipping container?					
6. Temperature blanks present?					
7. Cooler temperature(s) within limits of 0-6°C? [See item 13 and 14 for temperature recordings.]				Cooling initiated for recently collected samples / ice present <input type="checkbox"/>	
8. Chain of Custody (COC) present?					
9. Chain of Custody signed, dated, and timed when relinquished and received?					
10. Sampler name and/or signature on COC?					
11. Were all samples received within holding time?					
12. TAT marked on the COC?				If no TAT indicated, proceeded with standard TAT per Terms & Conditions. <input type="checkbox"/>	

13. Cooler 1 Temperature _____ °C Cooler 2 Temperature _____ °C Cooler 3 Temperature _____ °C Cooler 4 Temperature _____ °C
 Cooler 5 Temperature _____ °C Cooler 6 Temperature _____ °C Cooler 7 Temperature _____ °C Cooler 8 Temperature _____ °C

15. Comments: _____

I certify that I have completed sections 1-15 (dated initials). _____

	Yes	No	N/A	Details	Comments
16. Were sample containers intact upon receipt?					
17. Custody seals present on sample containers?					
18. Custody seals intact on sample containers?					
19. Do sample container labels match the COC?				incomplete info <input type="checkbox"/> illegible <input type="checkbox"/> no label <input type="checkbox"/> other <input type="checkbox"/>	
20. Are analyses requested indicated on the COC?					
21. Were all of the samples listed on the COC received?				samples received but not listed on COC <input type="checkbox"/> samples listed on COC not received <input type="checkbox"/>	
22. Was the sample collection date/time noted?					
23. Did we receive sufficient sample volume for indicated analyses?					
24. Were samples received in appropriate containers?					
25. Were VOA samples received without headspace (< 1/4" bubble)?					
26. Were trip blanks submitted?				listed on COC <input type="checkbox"/> not listed on COC <input type="checkbox"/>	

27. Comments: _____

I certify that I have completed sections 16-27 (dated initials). _____

	Yes	No	N/A	Details	Comments
28. Have containers needing chemical preservation been checked? *					
29. Containers meet preservation guidelines?					
30. Was pH adjusted at Sample Receipt?					

I certify that I have completed sections 28-30 (dated initials). _____

Client: Atlanta Environmental Mgmt
Project Name: DCSD - 4053
Workorder: 1710K62

ANALYTICAL QC SUMMARY REPORT

BatchID: 250367

Sample ID: MB-250367	Client ID:	Units: ug/L	Prep Date: 10/24/2017	Run No: 355641							
SampleType: MBLK	TestCode: Trace Elements by ICP/MS E200.8	BatchID: 250367	Analysis Date: 10/25/2017	Seq No: 7831101							
Analyte	Result	RPT Limit	SPK value	SPK Ref Val	%REC	Low Limit	High Limit	RPD Ref Val	%RPD	RPD Limit	Qual

Lead BRL 1.00

Sample ID: LCS-250367	Client ID:	Units: ug/L	Prep Date: 10/24/2017	Run No: 355641							
SampleType: LCS	TestCode: Trace Elements by ICP/MS E200.8	BatchID: 250367	Analysis Date: 10/25/2017	Seq No: 7831102							
Analyte	Result	RPT Limit	SPK value	SPK Ref Val	%REC	Low Limit	High Limit	RPD Ref Val	%RPD	RPD Limit	Qual

Lead 93.75 1.00 100.0 93.7 85 115

Sample ID: 1710K62-001AMS	Client ID: 4053-102017-CS-003-A	Units: ug/L	Prep Date: 10/24/2017	Run No: 355641							
SampleType: MS	TestCode: Trace Elements by ICP/MS E200.8	BatchID: 250367	Analysis Date: 10/25/2017	Seq No: 7831104							
Analyte	Result	RPT Limit	SPK value	SPK Ref Val	%REC	Low Limit	High Limit	RPD Ref Val	%RPD	RPD Limit	Qual

Lead 94.75 1.00 100.0 94.7 70 130

Sample ID: 1710K62-012AMS	Client ID: 4053-102017-DF-013-A	Units: ug/L	Prep Date: 10/24/2017	Run No: 355641							
SampleType: MS	TestCode: Trace Elements by ICP/MS E200.8	BatchID: 250367	Analysis Date: 10/25/2017	Seq No: 7831107							
Analyte	Result	RPT Limit	SPK value	SPK Ref Val	%REC	Low Limit	High Limit	RPD Ref Val	%RPD	RPD Limit	Qual

Lead 94.22 1.00 100.0 0.9819 93.2 70 130

Sample ID: 1710K62-001AMS	Client ID: 4053-102017-CS-003-A	Units: ug/L	Prep Date: 10/24/2017	Run No: 355641							
SampleType: MSD	TestCode: Trace Elements by ICP/MS E200.8	BatchID: 250367	Analysis Date: 10/25/2017	Seq No: 7831105							
Analyte	Result	RPT Limit	SPK value	SPK Ref Val	%REC	Low Limit	High Limit	RPD Ref Val	%RPD	RPD Limit	Qual

Lead 95.51 1.00 100.0 95.5 70 130 94.75 0.805 20

Qualifiers: > Greater than Result value < Less than Result value B Analyte detected in the associated method blank
 BRL Below reporting limit E Estimated (value above quantitation range) H Holding times for preparation or analysis exceeded
 J Estimated value detected below Reporting Limit N Analyte not NELAC certified R RPD outside limits due to matrix
 Rpt Lim Reporting Limit S Spike Recovery outside limits due to matrix

Client: Atlanta Environmental Mgmt
Project Name: DCSD - 4053
Workorder: 1710K62

ANALYTICAL QC SUMMARY REPORT

BatchID: 250398

Sample ID: MB-250398	Client ID:	Units: ug/L	Prep Date: 10/26/2017	Run No: 355471							
SampleType: MBLK	TestCode: Trace Elements by ICP/MS E200.8	BatchID: 250398	Analysis Date: 10/27/2017	Seq No: 7826243							
Analyte	Result	RPT Limit	SPK value	SPK Ref Val	%REC	Low Limit	High Limit	RPD Ref Val	%RPD	RPD Limit	Qual

Lead BRL 1.00

Sample ID: LCS-250398	Client ID:	Units: ug/L	Prep Date: 10/26/2017	Run No: 355471							
SampleType: LCS	TestCode: Trace Elements by ICP/MS E200.8	BatchID: 250398	Analysis Date: 10/27/2017	Seq No: 7826244							
Analyte	Result	RPT Limit	SPK value	SPK Ref Val	%REC	Low Limit	High Limit	RPD Ref Val	%RPD	RPD Limit	Qual

Lead 97.27 1.00 100.0 97.3 85 115

Sample ID: 1710K62-003AMS	Client ID: 4053-102017-CS-004-A	Units: ug/L	Prep Date: 10/26/2017	Run No: 355471							
SampleType: MS	TestCode: Trace Elements by ICP/MS E200.8	BatchID: 250398	Analysis Date: 10/27/2017	Seq No: 7826246							
Analyte	Result	RPT Limit	SPK value	SPK Ref Val	%REC	Low Limit	High Limit	RPD Ref Val	%RPD	RPD Limit	Qual

Lead 94.21 1.00 100.0 94.2 70 130

Sample ID: 1710K62-003AMSD	Client ID: 4053-102017-CS-004-A	Units: ug/L	Prep Date: 10/26/2017	Run No: 355471							
SampleType: MSD	TestCode: Trace Elements by ICP/MS E200.8	BatchID: 250398	Analysis Date: 10/27/2017	Seq No: 7826247							
Analyte	Result	RPT Limit	SPK value	SPK Ref Val	%REC	Low Limit	High Limit	RPD Ref Val	%RPD	RPD Limit	Qual

Lead 96.26 1.00 100.0 96.3 70 130 94.21 2.16 20

Qualifiers: > Greater than Result value < Less than Result value B Analyte detected in the associated method blank
 BRL Below reporting limit E Estimated (value above quantitation range) H Holding times for preparation or analysis exceeded
 J Estimated value detected below Reporting Limit N Analyte not NELAC certified R RPD outside limits due to matrix
 Rpt Lim Reporting Limit S Spike Recovery outside limits due to matrix

Leona Miles

From: NoReply@aesatlanta.net
Sent: Monday, November 20, 2017 1:55 PM
To: leona-miles@aem-net.com; tim-royer@aem-net.com
Subject: DCSD - 4053
Attachments: 1711517_REPORT.pdf; 1711517Invoice.pdf

Please see attached. If you have any questions or need further assistance please contact your project manager at 770-457-8177.

AES Reporting System

ANALYTICAL ENVIRONMENTAL SERVICES, INC.
3080 Presidential Drive ATLANTA, GA 30340
Tel: 770-457-8177 Fax: 770-457-8188
<http://www.aesatlanta.com>

NOTICE OF CONFIDENTIALITY: The information in this email and / or attachments may be legally privileged and is confidential information intended for the use of the individual or entity named in the email address. If the reader of this message is not the intended recipient, you are hereby notified that any use, dissemination, distribution, or copy of this email and / or attachments is strictly prohibited. If you have received this email in error, please notify Analytical Environmental Services Customer Service by telephone at (770) 457-8177 or by email at info@aesatlanta.com <<mailto:info@aesatlanta.com>> and delete the message. Thank you



ANALYTICAL ENVIRONMENTAL SERVICES, INC.

November 20, 2017

Leona Miles
Atlanta Environmental Mgmt
2580 NE Expressway
Atlanta GA 30345

RE: DCSD - 4053

Dear Leona Miles:

Order No: 1711517

Analytical Environmental Services, Inc. received 2 samples on 11/7/2017 8:19:00 AM for the analyses presented in following report.

No problems were encountered during the analyses. Additionally, all results for the associated Quality Control samples were within EPA and/or AES established limits. Any discrepancies associated with the analyses contained herein will be noted and submitted in the form of a project Case Narrative.

AES's accreditations are as follows:

-NELAP/State of Florida Laboratory ID E87582 for analysis of Non-Potable Water, Solid & Chemical Materials, Air & Emissions Volatile Organics, and Drinking Water Microbiology & Metals, effective 07/01/17-06/30/18.

State of Georgia, Department of Natural Resources ID #800 for analysis of Drinking Water Metals, effective 07/01/17-06/30/18 and Total Coliforms/ E. coli, effective 04/25/17-04/24/20.

-NELAP/Louisiana Agency Interest No. 100818 for or analysis of Non-Potable Water and Solid & Chemical Materials, effective 07/01/17-06/30/18.

-AIHA-LAP, LLC Laboratory ID: 100671 for Industrial Hygiene samples (Organics, Metals, PCM Asbestos, Gravimetric), Environmental Lead (Paint, Soil, Dust Wipes, Air), and Environmental Microbiology (Fungal) Direct Examination, effective until 11/01/19.

These results relate only to the items tested. This report may only be reproduced in full.

If you have any questions regarding these test results, please feel free to call.

Sincerely,

Ioana Pacurar
Project Manager



ANALYTICAL ENVIRONMENTAL SERVICES, INC

3080 Presidential Drive, Atlanta GA 30340-3704

TEL.: (770) 457-8177 / TOLL-FREE (800) 972-4889 / FAX: (770) 457-8188

CHAIN OF CUSTODY

Work Order: 1711517

Date: 11/7/17 Page 1 of 1

COMPANY: Atlanta Environmental Management Inc		ADDRESS: 2580 Northeast Expressway NE Atlanta, GA 30345				ANALYSIS REQUESTED						Visit our website www.aesatlanta.com to check on the status of your results, place bottle orders, etc.	No # of Containers		
PHONE: 404-329-9006		FAX: 404-329-2057				Lead (200.8)									
SAMPLED BY: Andy Jensen		SIGNATURE: [Signature]				PRESERVATION (See codes)									
#	SAMPLE ID	SAMPLED		Grab	Composite	Matrix (See codes)	PRESERVATION (See codes)						REMARKS		
		DATE	TIME				I								
1	4053-116717-DF-017-A	11/7/17	0519	X		DW	X								
2	4053-116717-DF-017-B	↓	0520	X		DW	X								
3															
4															
5															
6															
7															
8															
9															
10															
11															
12															
13															
14															
15															
RELINQUISHED BY 1: [Signature] 11/7/17 0755 2: [Signature] 11/7/17 0819 3: [Signature] 11/7/17 819		RECEIVED BY 1: [Signature] 11/7/18 0755 2: [Signature] 11/7/17 819 3: [Signature] 11/7/17 819		DATE/TIME		PROJECT INFORMATION PROJECT NAME: DCSD PROJECT #: 1561-1601 SITE ADDRESS: 4053 SEND REPORT TO: leona-miles@aem-net.com INVOICE TO: Leona Miles (IF DIFFERENT FROM ABOVE)						RECEIPT Total # of Containers Turnaround Time Request <input type="radio"/> Standard 5 Business Days <input type="radio"/> 2 Business Day Rush <input type="radio"/> Next Business Day Rush <input type="radio"/> Same Day Rush (auth req.) <input checked="" type="radio"/> Other: 10 business Days			
SPECIAL INSTRUCTIONS/COMMENTS: Presence at lab				SHIPMENT METHOD OUT / / VIA: IN <input checked="" type="radio"/> CLIENT <input type="radio"/> FedEx <input type="radio"/> UPS <input type="radio"/> MAIL <input type="radio"/> COURIER <input type="radio"/> GREYHOUND <input type="radio"/> OTHER				QUOTE #: _____ PO#: _____		STATE PROGRAM (if any) _____ E-mail? Y/N; Fax? Y/N DATA PACKAGE: I II III IV					

SAMPLES RECEIVED AFTER 3PM OR SATURDAY ARE CONSIDERED AS RECEIVED ON THE NEXT BUSINESS DAY; IF NO TAT IS MARKED ON COC AES WILL PROCEED AS STANDARD TAT.
 SAMPLES ARE DISPOSED OF 30 DAYS AFTER COMPLETION OF REPORT UNLESS OTHER ARRANGEMENTS ARE MADE.

MATRIX CODES: A = Air GW = Groundwater SE = Sediment SO = Soil SW = Surface Water DW = Drinking Water W = Water (Blanks) O = Other (specify)
 PRESERVATIVE CODES: H+I = Hydrochloric acid + ice I = Ice only N = Nitric acid S+I = Sulfuric acid + ice S/M+I = Sodium Bisulfate/Methanol + ice O = Other (specify) NA = None

Analytical Environmental Services, Inc

Date: 20-Nov-17

Client: Atlanta Environmental Mgmt	Client Sample ID: 4053-110717-DF-017-A
Project Name: DCSD - 4053	Collection Date: 11/7/2017 5:19:00 AM
Lab ID: 1711517-001	Matrix: Drinking Water

Analyses	Result	Reporting Limit	Qual	Units	BatchID	Dilution Factor	Date Analyzed	Analyst
Trace Elements by ICP/MS E200.8								
				(E200.2)				
Lead	BRL	1.00		ug/L	251201	1	11/10/2017 17:56	TA

Qualifiers:

- * Value exceeds maximum contaminant level
- BRL Below reporting limit
- H Holding times for preparation or analysis exceeded
- N Analyte not NELAC certified
- B Analyte detected in the associated method blank
- > Greater than Result value

- E Estimated (value above quantitation range)
- S Spike Recovery outside limits due to matrix
- Narr See case narrative
- NC Not confirmed
- < Less than Result value
- J Estimated value detected below Reporting Limit

Analytical Environmental Services, Inc

Date: 20-Nov-17

Client: Atlanta Environmental Mgmt	Client Sample ID: 4053-110717-DF-017-B
Project Name: DCSD - 4053	Collection Date: 11/7/2017 5:20:00 AM
Lab ID: 1711517-002	Matrix: Drinking Water

Analyses	Result	Reporting Limit	Qual	Units	BatchID	Dilution Factor	Date Analyzed	Analyst
Trace Elements by ICP/MS E200.8					(E200.2)			
Lead	BRL	1.00		ug/L	251201	1	11/10/2017 17:58	TA

Qualifiers:

- * Value exceeds maximum contaminant level
- BRL Below reporting limit
- H Holding times for preparation or analysis exceeded
- N Analyte not NELAC certified
- B Analyte detected in the associated method blank
- > Greater than Result value

- E Estimated (value above quantitation range)
- S Spike Recovery outside limits due to matrix
- Narr See case narrative
- NC Not confirmed
- < Less than Result value
- J Estimated value detected below Reporting Limit

SAMPLE/COOLER RECEIPT CHECKLIST

1. Client Name: _____

AES Work Order Number: _____

2. Carrier: FedEx UPS USPS Client Courier Other _____

	Yes	No	N/A	Details	Comments
3. Shipping container/cooler received in good condition?				damaged <input type="checkbox"/> leaking <input type="checkbox"/> other <input type="checkbox"/>	
4. Custody seals present on shipping container?					
5. Custody seals intact on shipping container?					
6. Temperature blanks present?					
7. Cooler temperature(s) within limits of 0-6°C? [See item 13 and 14 for temperature recordings.]				Cooling initiated for recently collected samples / ice present <input type="checkbox"/>	
8. Chain of Custody (COC) present?					
9. Chain of Custody signed, dated, and timed when relinquished and received?					
10. Sampler name and/or signature on COC?					
11. Were all samples received within holding time?					
12. TAT marked on the COC?				If no TAT indicated, proceeded with standard TAT per Terms & Conditions. <input type="checkbox"/>	

13. Cooler 1 Temperature _____ °C Cooler 2 Temperature _____ °C Cooler 3 Temperature _____ °C Cooler 4 Temperature _____ °C
 Cooler 5 Temperature _____ °C Cooler 6 Temperature _____ °C Cooler 7 Temperature _____ °C Cooler 8 Temperature _____ °C

15. Comments: _____

I certify that I have completed sections 1-15 (dated initials). _____

	Yes	No	N/A	Details	Comments
16. Were sample containers intact upon receipt?					
17. Custody seals present on sample containers?					
18. Custody seals intact on sample containers?					
19. Do sample container labels match the COC?				incomplete info <input type="checkbox"/> illegible <input type="checkbox"/> no label <input type="checkbox"/> other <input type="checkbox"/>	
20. Are analyses requested indicated on the COC?					
21. Were all of the samples listed on the COC received?				samples received but not listed on COC <input type="checkbox"/> samples listed on COC not received <input type="checkbox"/>	
22. Was the sample collection date/time noted?					
23. Did we receive sufficient sample volume for indicated analyses?					
24. Were samples received in appropriate containers?					
25. Were VOA samples received without headspace (< 1/4" bubble)?					
26. Were trip blanks submitted?				listed on COC <input type="checkbox"/> not listed on COC <input type="checkbox"/>	

27. Comments: _____

I certify that I have completed sections 16-27 (dated initials). _____

	Yes	No	N/A	Details	Comments
28. Have containers needing chemical preservation been checked? *					
29. Containers meet preservation guidelines?					
30. Was pH adjusted at Sample Receipt?					

I certify that I have completed sections 28-30 (dated initials). _____

Client: Atlanta Environmental Mgmt
Project Name: DCSD - 4053
Workorder: 1711517

ANALYTICAL QC SUMMARY REPORT

BatchID: 251201

Sample ID: MB-251201	Client ID:	Units: ug/L	Prep Date: 11/09/2017	Run No: 356577							
SampleType: MBLK	TestCode: Trace Elements by ICP/MS E200.8	BatchID: 251201	Analysis Date: 11/10/2017	Seq No: 7856037							
Analyte	Result	RPT Limit	SPK value	SPK Ref Val	%REC	Low Limit	High Limit	RPD Ref Val	%RPD	RPD Limit	Qual

Lead BRL 1.00

Sample ID: LCS-251201	Client ID:	Units: ug/L	Prep Date: 11/09/2017	Run No: 356577							
SampleType: LCS	TestCode: Trace Elements by ICP/MS E200.8	BatchID: 251201	Analysis Date: 11/10/2017	Seq No: 7856038							
Analyte	Result	RPT Limit	SPK value	SPK Ref Val	%REC	Low Limit	High Limit	RPD Ref Val	%RPD	RPD Limit	Qual

Lead 97.57 1.00 100.0 0.3557 97.2 85 115

Sample ID: 1711515-001AMS	Client ID:	Units: ug/L	Prep Date: 11/09/2017	Run No: 356577							
SampleType: MS	TestCode: Trace Elements by ICP/MS E200.8	BatchID: 251201	Analysis Date: 11/10/2017	Seq No: 7856040							
Analyte	Result	RPT Limit	SPK value	SPK Ref Val	%REC	Low Limit	High Limit	RPD Ref Val	%RPD	RPD Limit	Qual

Lead 100.4 1.00 100.0 0.4592 100.0 70 130

Sample ID: 1711516-004AMS	Client ID:	Units: ug/L	Prep Date: 11/09/2017	Run No: 356577							
SampleType: MS	TestCode: Trace Elements by ICP/MS E200.8	BatchID: 251201	Analysis Date: 11/10/2017	Seq No: 7856043							
Analyte	Result	RPT Limit	SPK value	SPK Ref Val	%REC	Low Limit	High Limit	RPD Ref Val	%RPD	RPD Limit	Qual

Lead 96.81 1.00 100.0 1.022 95.8 70 130

Sample ID: 1711515-001AMSD	Client ID:	Units: ug/L	Prep Date: 11/09/2017	Run No: 356577							
SampleType: MSD	TestCode: Trace Elements by ICP/MS E200.8	BatchID: 251201	Analysis Date: 11/10/2017	Seq No: 7856041							
Analyte	Result	RPT Limit	SPK value	SPK Ref Val	%REC	Low Limit	High Limit	RPD Ref Val	%RPD	RPD Limit	Qual

Lead 96.11 1.00 100.0 0.4592 95.7 70 130 100.4 4.41 20

Qualifiers: > Greater than Result value < Less than Result value B Analyte detected in the associated method blank
 BRL Below reporting limit E Estimated (value above quantitation range) H Holding times for preparation or analysis exceeded
 J Estimated value detected below Reporting Limit N Analyte not NELAC certified R RPD outside limits due to matrix
 Rpt Lim Reporting Limit S Spike Recovery outside limits due to matrix