



June 16, 2017

Via E-Mail: Joshua_I_williams@dekalbschoolsga.org

Mr. Joshua L. Williams, MBA, MSM, PMP
Chief Operations Officer
DeKalb County School District
Operations Division
Sam Moss Service Center
1780 Montreal Road
Tucker, Georgia 30084

**Re: Lead in Drinking Water Sampling Report
Arabia Mountain High School (Facility ID #0206)
6610 Browns Mill Road, Lithonia, Georgia 30038
AEM Project No. 1561-1601**

Dear Mr. Williams:

Atlanta Environmental Management, Inc. (AEM) is pleased to provide the DeKalb County School District (DCSD) an electronic copy of the Final Technical Lead in Drinking Water Sampling Report for Arabia Mountain High School (Facility ID #0206). Samples were collected on May 10, 2017. Laboratory analytical results were received from Analytical Environmental Services, Inc., on May 24, 2017.

FINDINGS

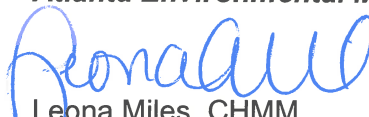
AEM collected 104 drinking water samples from 52 sources at Arabia Mountain High School (Facility ID #0206), including 2 duplicate samples. Figure 1 depicts the source sample locations. Samples were collected in accordance with the Water Sampling Methodology Protocol for DeKalb County School District, dated September 12, 2016. A copy of AEM's Field Sampling Notes is provided in Attachment A.

A description of the drinking water outlets sampled and a summary of sample analytical results are provided in Table 1. None of the samples collected and analyzed contained lead at a concentration equal to or above the U.S. Environmental Protection Agency's action level of 15 parts per billion. A copy of the AES laboratory analytical report is provided in Attachment B.

We appreciate your selection of AEM for this project. If you have any questions, please do not hesitate to contact us.

Sincerely,

Atlanta Environmental Management, Inc.



Leona Miles, CHMM
Senior Project Manager



Janet T. Hart
President

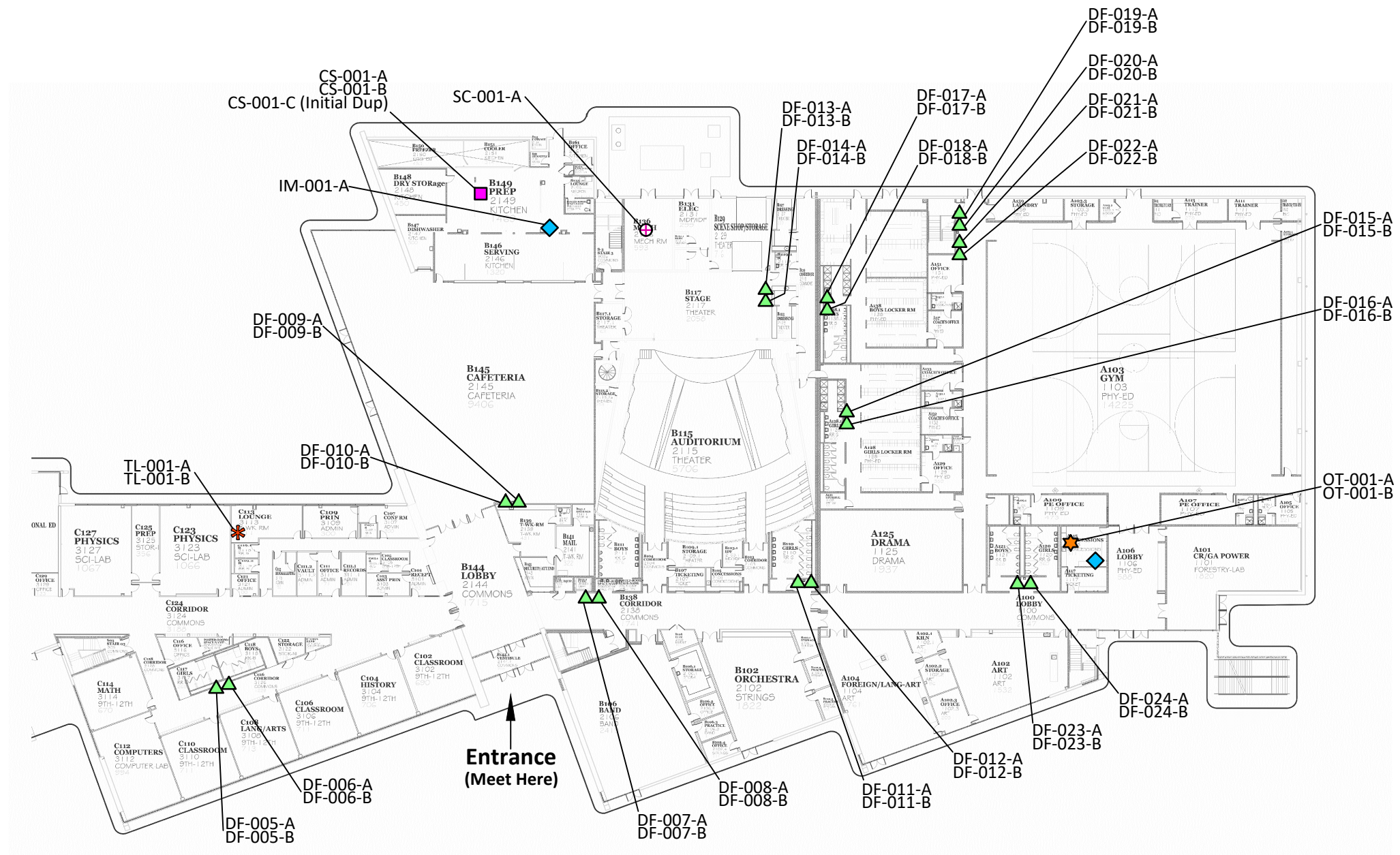
/krf


cc: Daniel Drake (DCSD)
Tracee Hill (DCSD)

FIGURE

Legend

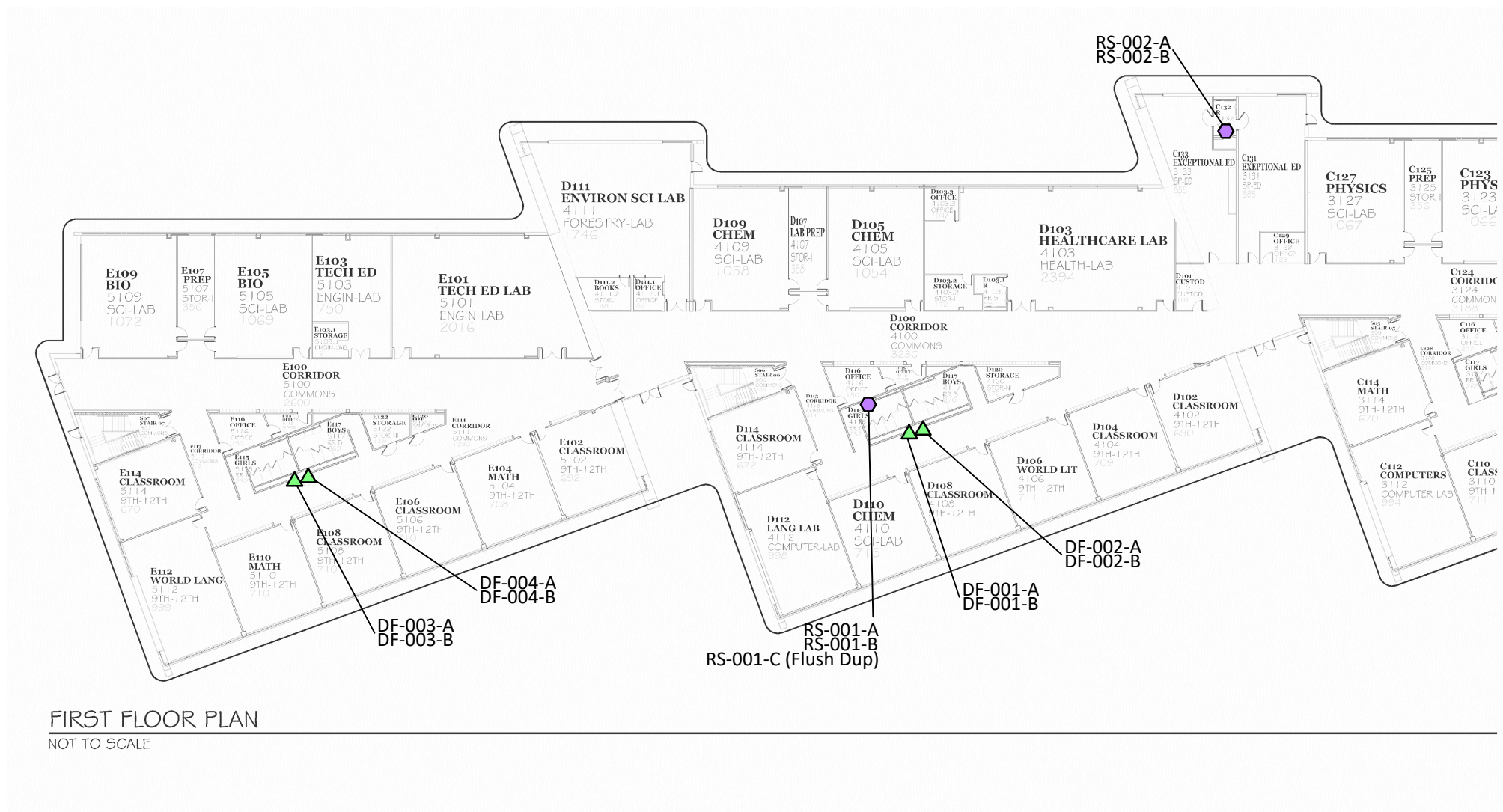
- - Cafeteria Sink (CS)
- ▲ - Drinking Fountain (DF)
- ◆ - Ice Maker (IM)
- - Kindergarten Sink (KS)
- ★ - Other (OT)
- - Restroom Sink (RS)
- ⊕ - Service Connection (SC)
- ✱ - Teachers Lounge (TL)



 Atlanta Environmental Management, Inc. Environmental Consulting, Engineering, Hydrogeologic Services 2580 Northeast Expressway • Atlanta, Georgia 30345 Phone: 404.329.9006 • Fax: 404.329.2057		Client: DeKalb County School District Site Location: Arabia Mountain High Facility (0206) 6610 Browns Mill Road Lithonia, GA 30038	
PROJECT #:	1561-1601-0206	DATE:	June 2, 2017
DRAWN BY:	AL	REVISED:	---
CHECKED BY:	TR	SCALE:	NTS
PROJECT MGR:	LM	PRINTED:	6/15/2017 1:22 PM
Sample Location Plan			Figure 1a
G:\DWG\1561-1601 DeKalb County Schools\0206\0206			


Legend

- - Cafeteria Sink (CS)
- ▲ - Drinking Fountain (DF)
- ◆ - Ice Maker (IM)
- - Kindergarten Sink (KS)
- ★ - Other (OT)
- - Restroom Sink (RS)
- ⊕ - Service Connection (SC)
- ✱ - Teachers Lounge (TL)



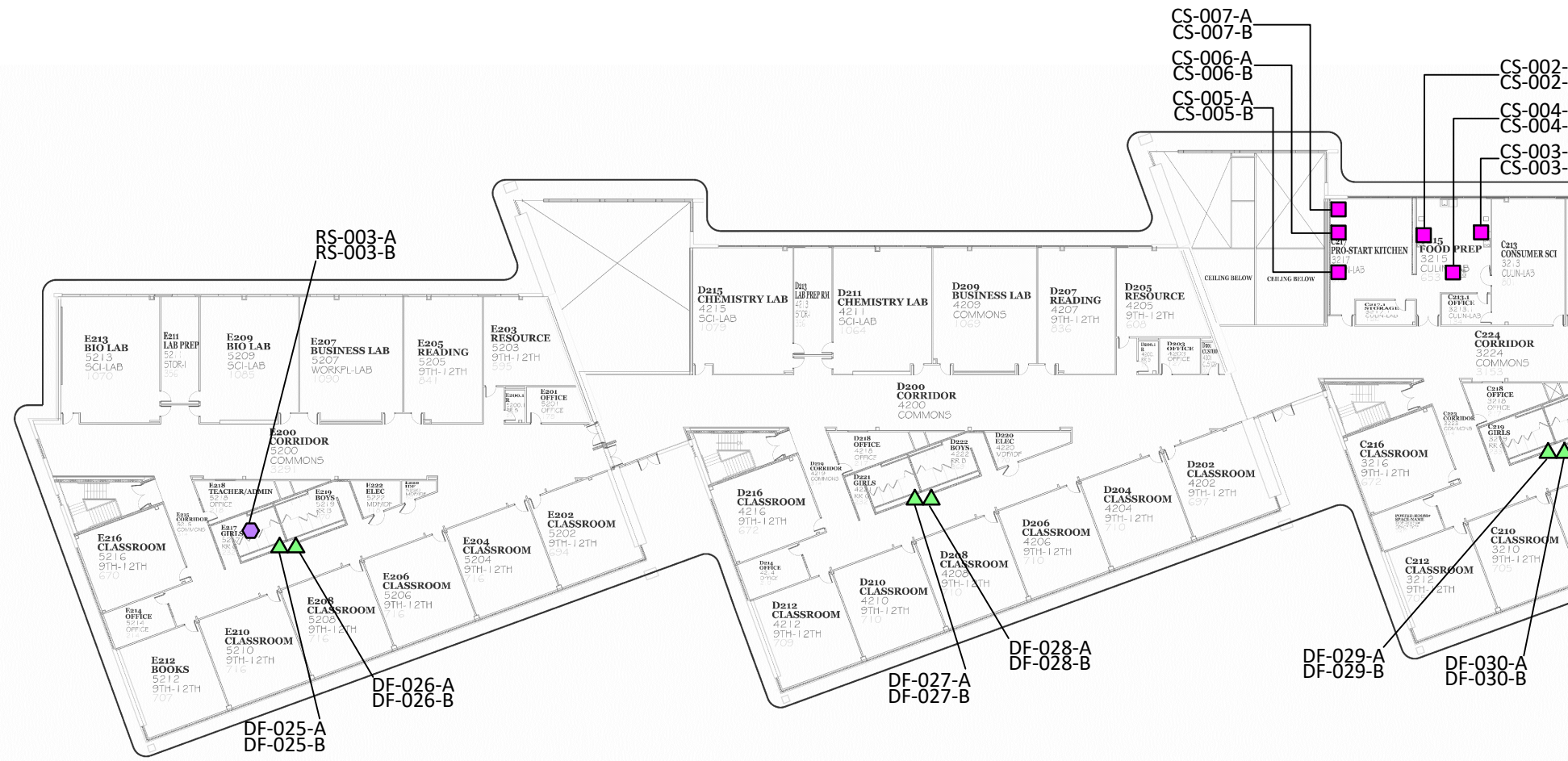
FIRST FLOOR PLAN
NOT TO SCALE



 Atlanta Environmental Management, Inc. Environmental Consulting, Engineering, Hydrogeologic Services 2580 Northeast Expressway • Atlanta, Georgia 30345 Phone: 404.329.9006 • Fax: 404.329.2057		Client: DeKalb County School District Site Location: Arabia Mountain High Facility (0206) 6610 Browns Mill Road Lithonia, GA 30038	
PROJECT #:	1561-1601-0206	DATE:	June 2, 2017
DRAWN BY:	AL	REVISED:	---
CHECKED BY:	TR	SCALE:	NTS
PROJECT MGR:	LM	PRINTED:	6/15/2017 1:22 PM
Sample Location Plan			Figure 1b
G:\DWG\1561-1601 DeKalb County Schools\0206\0206			


Legend

- - Cafeteria Sink (CS)
- ▲ - Drinking Fountain (DF)
- ◆ - Ice Maker (IM)
- - Kindergarten Sink (KS)
- ★ - Other (OT)
- - Restroom Sink (RS)
- ⊕ - Service Connection (SC)
- ✱ - Teachers Lounge (TL)



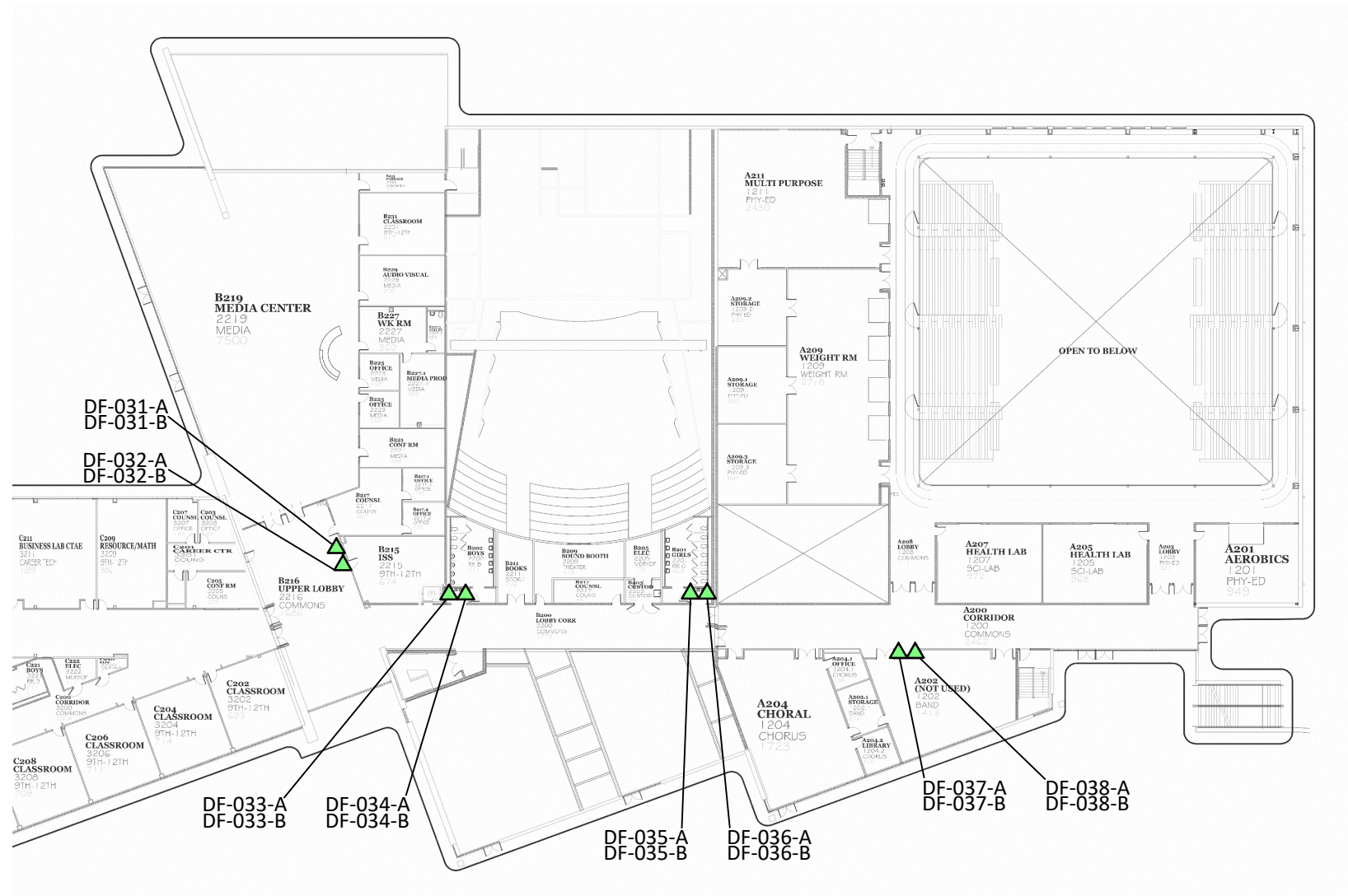
SECOND FLOOR PLAN
NOT TO SCALE




 Atlanta Environmental Management, Inc. Environmental Consulting, Engineering, Hydrogeologic Services 2580 Northeast Expressway • Atlanta, Georgia 30345 Phone: 404.329.9006 • Fax: 404.329.2057		Client: DeKalb County School District Site Location: Arabia Mountain High Facility (0206) 6610 Browns Mill Road Lithonia, GA 30038	
PROJECT #:	1561-1601-0206	DATE:	June 2, 2017
DRAWN BY:	AL	REVISED:	----
CHECKED BY:	TR	SCALE:	NTS
PROJECT MGR:	LM	PRINTED:	6/15/2017 1:22 PM
Sample Location Plan			Figure <h1 style="margin: 0;">1c</h1>
G:\DWG\1561-1601 DeKalb County Schools\0206\0206			

Legend

- - Cafeteria Sink (CS)
- ▲ - Drinking Fountain (DF)
- ◆ - Ice Maker (IM)
- - Kindergarten Sink (KS)
- ★ - Other (OT)
- - Restroom Sink (RS)
- ⊕ - Service Connection (SC)
- ✱ - Teachers Lounge (TL)



 Atlanta Environmental Management, Inc. Environmental Consulting, Engineering, Hydrogeologic Services 2580 Northeast Expressway • Atlanta, Georgia 30345 Phone: 404.329.9006 • Fax: 404.329.2057		Client: DeKalb County School District Site Location: Arabia Mountain High Facility (0206) 6610 Browns Mill Road Lithonia, GA 30038	
PROJECT #:	1561-1601-0206	DATE:	June 2, 2017
DRAWN BY:	AL	REVISED:	---
CHECKED BY:	TR	SCALE:	NTS
PROJECT MGR:	LM	PRINTED:	6/15/2017 1:22 PM
Sample Location Plan			Figure 1d
G:\DWG\1561-1601 DeKalb County Schools\0206\0206			

TABLE

Table 1. Summary of Lead in Drinking Water Laboratory Analytical Results**Arabia Mountain High School**

6610 Browns Mill Road, Lithonia, GA 30038



Sample ID*	Sample Location Description	Sample Date & Time	Lead Test Results (ppb)
0206-051017-DF-001-A	Initial Draw sample; Upper Left wall mounted Elkay Drinking Fountain in hallway across from Rm D110	5/10/17 5:11 AM	None Detected
0206-051017-DF-001-B	Flush sample; Upper Left wall mounted Elkay Drinking Fountain in hallway across from Rm D110	5/10/17 5:12 AM	None Detected
0206-051017-DF-002-A	Initial Draw sample; Lower Right wall mounted Elkay Drinking Fountain in hallway across from Rm D110	5/10/17 5:13 AM	None Detected
0206-051017-DF-002-B	Flush sample; Lower Right wall mounted Elkay Drinking Fountain in hallway across from Rm D110	5/10/17 5:14 AM	None Detected
0206-051017-DF-003-A	Initial Draw sample; Upper Left wall mounted Elkay Drinking Fountain in hallway across from Rm E110	5/10/17 5:51 AM	None Detected
0206-051017-DF-003-B	Flush sample; Upper Left wall mounted Elkay Drinking Fountain in hallway across from Rm E110	5/10/17 5:52 AM	None Detected
0206-051017-DF-004-A	Initial Draw sample; Lower Right wall mounted Elkay Drinking Fountain in hallway across from Rm E110	5/10/17 5:53 AM	None Detected
0206-051017-DF-004-B	Flush sample; Lower Right wall mounted Elkay Drinking Fountain in hallway across from Rm E110	5/10/17 5:54 AM	None Detected
0206-051017-DF-005-A	Initial Draw sample; Upper Left wall mounted Elkay Drinking Fountain in hallway across from Rm C110	5/10/17 5:33 AM	None Detected
0206-051017-DF-005-B	Flush sample; Upper Left wall mounted Elkay Drinking Fountain in hallway across from Rm C110	5/10/17 5:34 AM	None Detected
0206-051017-DF-006-A	Initial Draw sample; Lower Right wall mounted Elkay Drinking Fountain in hallway across from Rm C110	5/10/17 5:35 AM	None Detected
0206-051017-DF-006-B	Flush sample; Lower Right wall mounted Elkay Drinking Fountain in hallway across from Rm C110	5/10/17 5:36 AM	None Detected
0206-051017-DF-007-A	Initial Draw sample; Upper Left wall mounted Elkay Drinking Fountain in hallway by RRs across from Rm B106	5/10/17 5:40 AM	None Detected
0206-051017-DF-007-B	Flush sample; Upper Left wall mounted Elkay Drinking Fountain in hallway by RRs across from Rm B106	5/10/17 5:41 AM	None Detected

Table 1. Summary of Lead in Drinking Water Laboratory Analytical Results

Arabia Mountain High School

6610 Browns Mill Road, Lithonia, GA 30038



Sample ID*	Sample Location Description	Sample Date & Time	Lead Test Results (ppb)
0206-051017-DF-008-A	Initial Draw sample; Lower Right wall mounted Elkay Drinking Fountain in hallway by RRs across from Rm B106	5/10/17 5:42 AM	None Detected
0206-051017-DF-008-B	Flush sample; Lower Right wall mounted Elkay Drinking Fountain in hallway by RRs across from Rm B106	5/10/17 5:43 AM	None Detected
0206-051017-DF-009-A	Initial Draw sample; Upper Left wall mounted Elkay Drinking Fountain in Cafeteria	5/10/17 5:20 AM	None Detected
0206-051017-DF-009-B	Flush sample; Upper Left wall mounted Elkay Drinking Fountain in Cafeteria	5/10/17 5:21 AM	None Detected
0206-051017-DF-010-A	Initial Draw sample; Lower Right wall mounted Elkay Drinking Fountain in Cafeteria	5/10/17 5:22 AM	None Detected
0206-051017-DF-010-B	Flush sample; Lower Right wall mounted Elkay Drinking Fountain in Cafeteria	5/10/17 5:23 AM	None Detected
0206-051017-DF-011-A	Initial Draw sample; Upper Left wall mounted Elkay Drinking Fountain in hallway right of Theater Rm B115	5/10/17 5:47 AM	None Detected
0206-051017-DF-011-B	Flush sample; Upper Left wall mounted Elkay Drinking Fountain in hallway right of Theater Rm B115	5/10/17 5:48 AM	None Detected
0206-051017-DF-012-A	Initial Draw sample; Lower Right wall mounted Elkay Drinking Fountain in hallway right of Theater Rm B115	5/10/17 5:49 AM	None Detected
0206-051017-DF-012-B	Flush sample; Lower Right wall mounted Elkay Drinking Fountain in hallway right of Theater Rm B115	5/10/17 5:50 AM	None Detected
0206-051017-DF-013-A	Initial Draw sample; Upper Left wall mounted Elkay Drinking Fountain on Auditorium stage	5/10/17 5:08 AM	None Detected
0206-051017-DF-013-B	Flush sample; Upper Left wall mounted Elkay Drinking Fountain on Auditorium stage	5/10/17 5:09 AM	None Detected
0206-051017-DF-014-A	Initial Draw sample; Lower Right wall mounted Elkay Drinking Fountain on Auditorium stage	5/10/17 5:10 AM	None Detected
0206-051017-DF-014-B	Flush sample; Lower Right wall mounted Elkay Drinking Fountain on Auditorium stage	5/10/17 5:11 AM	None Detected
0206-051017-DF-015-A	Initial Draw sample; Upper Left wall mounted Elkay Drinking Fountain in Girls Locker Rm	5/10/17 5:15 AM	1.06

Table 1. Summary of Lead in Drinking Water Laboratory Analytical Results**Arabia Mountain High School**

6610 Browns Mill Road, Lithonia, GA 30038



Sample ID*	Sample Location Description	Sample Date & Time	Lead Test Results (ppb)
0206-051017-DF-015-B	Flush sample; Upper Left wall mounted Elkay Drinking Fountain in Girls Locker Rm	5/10/17 5:16 AM	None Detected
0206-051017-DF-016-A	Initial Draw sample; Lower Right wall mounted Elkay Drinking Fountain in Girls Locker Rm	5/10/17 5:17 AM	1.19
0206-051017-DF-016-B	Flush sample; Lower Right wall mounted Elkay Drinking Fountain in Girls Locker Rm	5/10/17 5:18 AM	None Detected
0206-051017-DF-017-A	Initial Draw sample; Upper Left wall mounted Elkay Drinking Fountain in Boys Locker Room	5/10/17 5:22 AM	None Detected
0206-051017-DF-017-B	Flush sample; Upper Left wall mounted Elkay Drinking Fountain in Boys Locker Room	5/10/17 5:23 AM	None Detected
0206-051017-DF-018-A	Initial Draw sample; Lower Right wall mounted Elkay Drinking Fountain in Boys Locker Room	5/10/17 5:24 AM	None Detected
0206-051017-DF-018-B	Flush sample; Lower Right wall mounted Elkay Drinking Fountain in Boys Locker Room	5/10/17 5:25 AM	None Detected
0206-051017-DF-019-A	Initial Draw sample; Right most lower wall mounted Elkay Drinking Fountain in Gym hallway	5/10/17 5:31 AM	None Detected
0206-051017-DF-019-B	Flush sample; Right most lower wall mounted Elkay Drinking Fountain in Gym hallway	5/10/17 5:32 AM	None Detected
0206-051017-DF-020-A	Initial Draw sample; Second from Right upper wall mounted Elkay Drinking Fountain in Gym hallway	5/10/17 5:33 AM	None Detected
0206-051017-DF-020-B	Flush sample; Second from Right upper wall mounted Elkay Drinking Fountain in Gym hallway	5/10/17 5:34 AM	None Detected
0206-051017-DF-021-A	Initial Draw sample; Second from Left lower wall mounted Elkay Drinking Fountain in Gym hallway	5/10/17 5:35 AM	None Detected
0206-051017-DF-021-B	Flush sample; Second from Left lower wall mounted Elkay Drinking Fountain in Gym hallway	5/10/17 5:36 AM	None Detected
0206-051017-DF-022-A	Initial Draw sample; Left most upper wall mounted Elkay Drinking Fountain in Gym hallway	5/10/17 5:37 AM	None Detected

Table 1. Summary of Lead in Drinking Water Laboratory Analytical Results

Arabia Mountain High School

6610 Browns Mill Road, Lithonia, GA 30038



Sample ID*	Sample Location Description	Sample Date & Time	Lead Test Results (ppb)
0206-051017-DF-022-B	Flush sample; Lower most upper wall mounted Elkay Drinking Fountain in Gym hallway	5/10/17 5:38 AM	None Detected
0206-051017-DF-023-A	Initial Draw sample; Upper Left wall mounted Elkay Drinking Fountain in hallway across from Rm A102	5/10/17 5:53 AM	None Detected
0206-051017-DF-023-B	Flush sample; Upper Left wall mounted Elkay Drinking Fountain in hallway across from Rm A102	5/10/17 5:54 AM	None Detected
0206-051017-DF-024-A	Initial Draw sample; Lower Right wall mounted Elkay Drinking Fountain in hallway across from Rm A102	5/10/17 5:56 AM	None Detected
0206-051017-DF-024-B	Flush sample; Lower Right wall mounted Elkay Drinking Fountain in hallway across from Rm A102	5/10/17 5:57 AM	None Detected
0206-051017-DF-025-A	Initial Draw sample; Upper Left wall mounted Elkay Drinking Fountain in hallway across from Rm E210	5/10/17 6:14 AM	None Detected
0206-051017-DF-025-B	Flush sample; Upper Left wall mounted Elkay Drinking Fountain in hallway across from Rm E210	5/10/17 6:15 AM	None Detected
0206-051017-DF-026-A	Initial Draw sample; Lower Right wall mounted Elkay Drinking Fountain in hallway across from Rm E210	5/10/17 6:16 AM	None Detected
0206-051017-DF-026-B	Flush sample; Lower Right wall mounted Elkay Drinking Fountain in hallway across from Rm E210	5/10/17 6:17 AM	None Detected
0206-051017-DF-027-A	Initial Draw sample; Upper Left wall mounted Elkay Drinking Fountain in hallway across from Rm D210	5/10/17 6:09 AM	None Detected
0206-051017-DF-027-B	Flush sample; Upper Left wall mounted Elkay Drinking Fountain in hallway across from Rm D210	5/10/17 6:10 AM	None Detected
0206-051017-DF-028-A	Initial Draw sample; Lower Right wall mounted Elkay Drinking Fountain in hallway across from Rm D210	5/10/17 6:11 AM	None Detected
0206-051017-DF-028-B	Flush sample; Lower Right wall mounted Elkay Drinking Fountain in hallway across from Rm D210	5/10/17 6:12 AM	None Detected
0206-051017-DF-029-A	Initial Draw sample; Upper Left wall mounted Elkay Drinking Fountain in hallway across from Rm C210	5/10/17 6:03 AM	None Detected

Table 1. Summary of Lead in Drinking Water Laboratory Analytical Results

Arabia Mountain High School

6610 Browns Mill Road, Lithonia, GA 30038



Sample ID*	Sample Location Description	Sample Date & Time	Lead Test Results (ppb)
0206-051017-DF-029-B	Flush sample; Upper Left wall mounted Elkay Drinking Fountain in hallway across from Rm C210	5/10/17 6:04 AM	None Detected
0206-051017-DF-030-A	Initial Draw sample; Lower Right wall mounted Elkay Drinking Fountain in hallway across from Rm C210	5/10/17 6:05 AM	None Detected
0206-051017-DF-030-B	Flush sample; Lower Right wall mounted Elkay Drinking Fountain in hallway across from Rm C210	5/10/17 6:06 AM	None Detected
0206-051017-DF-031-A	Initial Draw sample; Upper Left wall mounted Elkay Drinking Fountain in hallway left of Rm B215	5/10/17 6:14 AM	None Detected
0206-051017-DF-031-B	Flush sample; Upper Left wall mounted Elkay Drinking Fountain in hallway left of Rm B215	5/10/17 6:15 AM	None Detected
0206-051017-DF-032-A	Initial Draw sample; Lower Right wall mounted Elkay Drinking Fountain in hallway left of Rm B215	5/10/17 6:16 AM	None Detected
0206-051017-DF-032-B	Flush sample; Lower Right wall mounted Elkay Drinking Fountain in hallway left of Rm B215	5/10/17 6:17 AM	None Detected
0206-051017-DF-033-A	Initial Draw sample; Upper Left wall mounted Elkay Drinking Fountain in hallway left of Rm B211	5/10/17 6:21 AM	None Detected
0206-051017-DF-033-B	Flush sample; Upper Left wall mounted Elkay Drinking Fountain in hallway left of Rm B211	5/10/17 6:22 AM	None Detected
0206-051017-DF-034-A	Initial Draw sample; Lower Right wall mounted Elkay Drinking Fountain in hallway left of Rm B211	5/10/17 6:23 AM	None Detected
0206-051017-DF-034-B	Flush sample; Lower Right wall mounted Elkay Drinking Fountain in hallway left of Rm B211	5/10/17 6:24 AM	None Detected
0206-051017-DF-035-A	Initial Draw sample; Upper Left wall mounted Elkay Drinking Fountain in hallway near Rm A204	5/10/17 6:17 AM	None Detected
0206-051017-DF-035-B	Flush sample; Upper Left wall mounted Elkay Drinking Fountain in hallway near RM A204	5/10/17 6:18 AM	None Detected
0206-051017-DF-036-A	Initial Draw sample; Lower Right wall mounted Elkay Drinking Fountain in hallway near Rm A204	5/10/17 6:15 AM	None Detected

Table 1. Summary of Lead in Drinking Water Laboratory Analytical Results

Arabia Mountain High School
6610 Browns Mill Road, Lithonia, GA 30038



Sample ID*	Sample Location Description	Sample Date & Time	Lead Test Results (ppb)
0206-051017-DF-036-B	Flush sample; Lower Right wall mounted Elkay Drinking Fountain in hallway near Rm A204	5/10/17 6:16 AM	None Detected
0206-051017-DF-037-A	Initial Draw sample; Lower Right wall mounted Elkay Drinking Fountain in hallway to left of Rm A202	5/10/17 6:10 AM	None Detected
0206-051017-DF-037-B	Flush sample; Lower Right wall mounted Elkay Drinking Fountain in hallway to left of Rm A202	5/10/17 6:11 AM	None Detected
0206-051017-DF-038-A	Initial Draw sample; Upper Left wall mounted Elkay Drinking Fountain in hallway to left of Rm A202	5/10/17 6:08 AM	None Detected
0206-051017-DF-038-B	Flush sample; Upper Left wall mounted Elkay Drinking Fountain in hallway to left of Rm A202	5/10/17 6:09 AM	None Detected
0206-051017-RS-001-A	Initial Draw sample; Far Left sink in Girls RR across from Rm D110	5/10/17 5:17 AM	None Detected
0206-051017-RS-001-B	Flush sample; Far Left sink in Girls RR across from Rm D110	5/10/17 5:18 AM	None Detected
0206-051017-RS-001-C	Flush Duplicate sample; Far Left sink in Girls RR across from Rm D110	5/10/17 5:19 AM	None Detected
0206-051017-RS-002-A	Initial Draw sample; Sink in Special Ed/Rm C133; Next to microwave	5/10/17 6:00 AM	None Detected
0206-051017-RS-002-B	Flush sample; Sink in Special Ed/Rm C133; Next to microwave	5/10/17 6:01 AM	None Detected
0206-051017-RS-003-A	Initial Draw sample; Far Left sink in Girls RR across from Rm E210	5/10/17 6:19 AM	None Detected
0206-051017-RS-003-B	Flush sample; Far Left sink in Girls RR across from Rm E210	5/10/17 6:20 AM	None Detected
0206-051017-TL-001-A	Initial Draw sample; Only sink in Rm C113	5/10/17 5:28 AM	None Detected
0206-051017-TL-001-B	Flush sample; Only sink in Rm C113	5/10/17 5:29 AM	None Detected
0206-051017-CS-001-A	Initial Draw sample; Food Prep sink in corner of Kitchen	5/10/17 5:12 AM	1.72
0206-051017-CS-001-B	Flush sample; Food Prep sink in corner of Kitchen	5/10/17 5:14 AM	None Detected
0206-051017-CS-001-C	Initial Draw Duplicate sample; Food Prep sink in corner of Kitchen	5/10/17 5:13 AM	1.87
0206-051017-CS-002-A	Initial Draw sample; Back Left sink in Rm C215	5/10/17 5:36 AM	None Detected
0206-051017-CS-002-B	Flush sample; Back Left sink in Rm C215	5/10/17 5:37 AM	None Detected
0206-051017-CS-003-A	Initial Draw sample; Back Right sink in Rm C215	5/10/17 5:38 AM	None Detected
0206-051017-CS-003-B	Flush sample; Back Right sink in Rm C215	5/10/17 5:39 AM	None Detected
0206-051017-CS-004-A	Initial Draw sample; Sink in island at front of Rm C215	5/10/17 5:40 AM	None Detected
0206-051017-CS-004-B	Flush sample; Sink in island at front of Rm C215	5/10/17 5:41 AM	None Detected

Table 1. Summary of Lead in Drinking Water Laboratory Analytical Results

Arabia Mountain High School

6610 Browns Mill Road, Lithonia, GA 30038



Sample ID*	Sample Location Description	Sample Date & Time	Lead Test Results (ppb)
0206-051017-CS-005-A	Initial Draw sample; Front Left sink in Rm C217	5/10/17 5:42 AM	None Detected
0206-051017-CS-005-B	Flush sample; Front Left sink in Rm C217	5/10/17 5:43 AM	None Detected
0206-051017-CS-006-A	Initial Draw sample; Middle Left sink in Rm C217	5/10/17 5:44 AM	1.68
0206-051017-CS-006-B	Flush sample; Middle Left sink in Rm C217	5/10/17 5:45 AM	None Detected
0206-051017-CS-007-A	Initial Draw sample; Back Left sink in Rm C217	5/10/17 5:46 AM	None Detected
0206-051017-CS-007-B	Flush sample; Back Left sink in Rm C217	5/10/17 5:47 AM	None Detected
0206-051017-IM-001-A	Hoshizaki IM near front of Kitchen	5/10/17 5:15 AM	None Detected
0206-051017-OT-001-A	Initial Draw sample; Sampled sink in Concession Stand/Rm A115	5/10/17 5:40 AM	None Detected
0206-051017-OT-001-B	Flush sample; Sampled sink in Concession Stand/Rm A115	5/10/17 5:41 AM	None Detected
0206-051017-SC-001-A	Service Connection Entry into Building	5/10/17 5:05 AM	None Detected

Notes:

ppb-parts per billion

Bold-Exceeds 15 ppb--EPA's Action Level for Lead

* Note--Where "A" and "B" are indicated, AEM collected two samples at each source area location: ("A") initial draw sample; and ("B") after a 30-second flush sample

ATTACHMENT A
AEM Field Sampling Forms

**DEKALB COUNTY SCHOOL DISTRICT
LEAD IN DRINKING WATER FIELD DATA SHEET**

FACILITY NAME: ARABIA MOUNTAIN HIGH FACILITY
 ADDRESS: 6610 Browns Mill Road Lithonia, GA, 30038

FACILITY ID: 0206

DATE	TIME	SAMPLE ID (Facility ID-Date-Location Type-Sequential #-Sample Type)	NEAREST ROOM	LOCATION (circle)	DESCRIPTION	SAMPLER INIT.
5/10/17	0522	0206 - 051017 - DF-017-A	Boys Locker RM	In room Hallway	upper left Elkay; WM	
5/10/17	0523	0206 - 051017 - DF-017-B	"	In room Hallway	"	
5/10/17	0524	0206 - 051017 - DF-018-A	"	In room Hallway	lower right Elkay; WM	
5/10/17	0525	0206 - 051017 - DF-018-B	"	In room Hallway	"	
5/10/17	0531	0206 - 051017 - DF-019-A	Gym Hall way	In room Hallway	Rightmost lower Elkay; WM	
5/10/17	0532	0206 - 051017 - DF-019-B	"	In room Hallway	"	
5/10/17	0533	0206 - 051017 - DF-020-A	"	In room Hallway	Second from right, upper Elkay	
5/10/17	0534	0206 - 051017 - DF-020-B	"	In room Hallway	"	
5/10/17	0535	0206 - 051017 - DF-021-A	"	In room Hallway	second from left; lower Elkay	
5/10/17	0536	0206 - 051017 - DF-021-B	"	In room Hallway	"	

LOCATION TYPE: AF = athletic field; CS = cafeteria sink; DF = drinking fountain; IM = ice maker; KS = kindergarten sink; RS = restroom sink; SC = service connection; TL = teachers' lounge. SAMPLE TYPE: A = initial draw; B = flush; C = duplicate

**DEKALB COUNTY SCHOOL DISTRICT
LEAD IN DRINKING WATER FIELD DATA SHEET**

FACILITY NAME: ARABIA MOUNTAIN HIGH FACILITY
 ADDRESS: 6610 Browns Mill Road Lithonia, GA, 30038

FACILITY ID: 0206

DATE	TIME	SAMPLE ID (Facility ID-Date-Location Type-Sequential #-Sample Type)	NEAREST ROOM	LOCATION (circle)	DESCRIPTION	SAMPLER INIT.
5/10/17	0537	0206 - 051017 - DF-002-A	Gym Hall way	In room Hallway	Leftmost Elkay; upper; WM	CD
5/10/17	0538	0206 - 051017 - DF-022-B	"	In room Hallway	"	↓
5/10/17	0551	0206 - 051017 - DF-003-A	Across from E110	In room Hallway	upper left Elkay; WM	
5/10/17	0552	0206 - 051017 - DF-003-B	"	In room Hallway	"	
5/10/17	0553	0206 - 051017 - DF-004-A	"	In room Hallway	Lower right Elkay; WM	
5/10/17	0554	0206 - 051017 - DF-004-B	"	In room Hallway	"	
5/10/17	0600	0206 - 051017 - RS-002-A	Special Ed C133	In room Hallway	sink in special Ed rm next to microwave	
5/10/17	0601	0206 - 051017 - RS-002-B		In room Hallway	"	
5/10/17		0206 - 051017 -		In room Hallway		
5/10/17		0206 - 051017 -		In room Hallway		

LOCATION TYPE: AF = athletic field; CS = cafeteria sink; DF = drinking fountain; IM = ice maker; KS = kindergarten sink; RS = restroom sink; SC = service connection; TL = teachers' lounge. SAMPLE TYPE: A = initial draw; B = flush; C = duplicate

**DEKALB COUNTY SCHOOL DISTRICT
LEAD IN DRINKING WATER FIELD DATA SHEET**

FACILITY NAME: ARABIA MOUNTAIN HIGH FACILITY
 ADDRESS: 6610 Browns Mill Road Lithonia, GA, 30038

FACILITY ID: 0206

DATE	TIME	SAMPLE ID (Facility ID-Date-Location Type-Sequential #-Sample Type)	NEAREST ROOM	LOCATION (circle)	DESCRIPTION	SAMPLER INIT.
5/10/17	0608	0206 - 051017 - DF-038-A	Left of A202	In room Hallway	Upper left Elkay; WM	
5/10/17	0609	0206 - 051017 - DF-038-B	"	In room Hallway	"	
5/10/17	0610	0206 - 051017 - DF-037-A	"	In room Hallway	Lower right Elkay; WM	
5/10/17	0611	0206 - 051017 - DF-037-B	"	In room Hallway	"	
5/10/17	0615	0206 - 051017 - DF-036-A	near A204	In room Hallway	Lower right Elkay; WM	
5/10/17	0616	0206 - 051017 - DF-036-B	"	In room Hallway	"	
5/10/17	0617	0206 - 051017 - DF-035-A	"	In room Hallway	Upper left Elkay; WM	
5/10/17	0618	0206 - 051017 - DF-035-B	"	In room Hallway	"	
5/10/17		0206 - 051017 -		In room Hallway		
5/10/17		0206 - 051017 -		In room Hallway		

LOCATION TYPE: AF = athletic field; CS = cafeteria sink; DF = drinking fountain; IM = ice maker; KS = kindergarten sink; RS = restroom sink; SC = service connection; TL = teachers' lounge. SAMPLE TYPE: A = initial draw; B = flush; C = duplicate

213
WTB
JK

**DEKALB COUNTY SCHOOL DISTRICT
LEAD IN DRINKING WATER FIELD DATA SHEET**

FACILITY NAME: ARABIA MOUNTAIN HIGH FACILITY
ADDRESS: 6610 Browns Mill Road Lithonia, GA, 30038

FACILITY ID: 0206

DATE	TIME	SAMPLE ID (Facility ID-Date-Location Type-Sequential #-Sample Type)	NEAREST ROOM	LOCATION (circle)	DESCRIPTION	SAMPLER INIT.
5/10/17	0508	0206 - 051017 - DF-013-A	Auditorium Stage	In room Hallway	Upper left Elkay; WM	CA
5/10/17	0509	0206 - 051017 - DF-013-B	"	In room Hallway	"	↓
5/10/17	0510	0206 - 051017 - DF-014-A	"	In room Hallway	Lower right Elkay; WM	
5/10/17	0511	0206 - 051017 - DF-014-B	"	In room Hallway	"	
5/10/17	0515	0206 - 051017 - DF-015-A	Girls' Locker Rm	In room Hallway	Upper left Elkay; WM	
5/10/17	0516	0206 - 051017 - DF-015-B	"	In room Hallway	"	
5/10/17	0517	0206 - 051017 - DF-016-A	"	In room Hallway	Lower right Elkay; WM	
5/10/17	0518	0206 - 051017 - DF-016-B	"	In room Hallway	"	
5/10/17	0540	0206 - 051017 - OT-001-A	Concession Stand AIS	In room Hallway	Sink in concession	
5/10/17	0541	0206 - 051017 - OT-001-B	"	In room Hallway	"	

LOCATION TYPE: AF = athletic field; CS = cafeteria sink; DF = drinking fountain; IM = ice maker; KS = kindergarten sink; RS = restroom sink; SC = service connection; TL = teachers' lounge. SAMPLE TYPE: A = initial draw; B = flush; C = duplicate

**DEKALB COUNTY SCHOOL DISTRICT
LEAD IN DRINKING WATER FIELD DATA SHEET**

FACILITY NAME: ARABIA MOUNTAIN HIGH FACILITY
 ADDRESS: 6610 Browns Mill Road Lithonia, GA, 30038

FACILITY ID: 0206

DATE	TIME	SAMPLE ID (Facility ID-Date-Location Type-Sequential #-Sample Type)	NEAREST ROOM	LOCATION (circle)	DESCRIPTION	SAMPLER INIT.	
5/10/17	0536	0206 - 051017 - CS-002-A	C215	<u>In room</u> Hallway	back left sink	KTW	
5/10/17	0537	0206 - 051017 - CS-002-B	↓	<u>In room</u> Hallway	SAA	KTW	
5/10/17	0538	0206 - 051017 - CS-003-A		<u>In room</u> Hallway	back right sink	KTW	
5/10/17	0539	0206 - 051017 - CS-003-B		<u>In room</u> Hallway	SAA	KTW	
5/10/17	0540	0206 - 051017 - CS-004-A		<u>In room</u> Hallway	Sink in island at front of rm	KTW	
5/10/17	0541	0206 - 051017 - CS-004-B	↓	<u>In room</u> Hallway	SAA	KTW	
5/10/17	0542	0206 - 051017 - CS-005-A		C217	<u>In room</u> Hallway	Front left sink	KTW
5/10/17	0543	0206 - 051017 - CS-005-B		<u>In room</u> Hallway	SAA	KTW	
5/10/17	0544	0206 - 051017 - CS-006-A	↓	<u>In room</u> Hallway	Middle left sink	KTW	
5/10/17	0545	0206 - 051017 - CS-006-B		<u>In room</u> Hallway	SAA	KTW	

LOCATION TYPE: AF = athletic field; CS = cafeteria sink; DF = drinking fountain; IM = ice maker; KS = kindergarten sink; RS = restroom sink; SC = service connection; TL = teachers' lounge. SAMPLE TYPE: A = initial draw; B = flush; C = duplicate

**DEKALB COUNTY SCHOOL DISTRICT
LEAD IN DRINKING WATER FIELD DATA SHEET**

FACILITY NAME: ARABIA MOUNTAIN HIGH FACILITY
 ADDRESS: 6610 Browns Mill Road Lithonia, GA, 30038

FACILITY ID: 0206

DATE	TIME	SAMPLE ID (Facility ID-Date-Location Type-Sequential #-Sample Type)	NEAREST ROOM	LOCATION (circle)	DESCRIPTION	SAMPLER INIT.
5/10/17	0546	0206 - 051017 - CS-007-A	C217	In room Hallway	Back left sink	KTW
5/10/17	0547	0206 - 051017 - CS-007-B	" "	In room Hallway	SAA	KTW
5/10/17	0603	0206 - 051017 - DF-029-A	across from C210	In room Hallway	Upper left Elkay DF-WM	KTW
5/10/17	0604	0206 - 051017 - DF-029-B	↓	In room Hallway	SAA	KTW
5/10/17	0605	0206 - 051017 - DF-030-A		In room Hallway	Lower Right Elkay DF-WM	KTW
5/10/17	0606	0206 - 051017 - DF-030-B		In room Hallway	SAA	KTW
5/10/17	0609	0206 - 051017 - DF-027-A	across from D210	In room Hallway	Upper Left Elkay DF-WM	KTW
5/10/17	0610	0206 - 051017 - DF-027-B	↓	In room Hallway	SAA	KTW
5/10/17	0611	0206 - 051017 - DF-028-A		In room Hallway	Lower Right Elkay DF-WM	KTW
5/10/17	0612	0206 - 051017 - DF-028-B		In room Hallway	SAA	KTW

LOCATION TYPE: AF = athletic field; CS = cafeteria sink; DF = drinking fountain; IM = ice maker; KS = kindergarten sink; RS = restroom sink; SC = service connection; TL = teachers' lounge. SAMPLE TYPE: A = initial draw; B = flush; C = duplicate

**DEKALB COUNTY SCHOOL DISTRICT
LEAD IN DRINKING WATER FIELD DATA SHEET**

FACILITY NAME: ARABIA MOUNTAIN HIGH FACILITY
 ADDRESS: 6610 Browns Mill Road Lithonia, GA, 30038

FACILITY ID: 0206

DATE	TIME	SAMPLE ID (Facility ID-Date-Location Type-Sequential #-Sample Type)	NEAREST ROOM	LOCATION (circle)	DESCRIPTION	SAMPLER INIT.
5/10/17	0614	0206 - 051017 - DF-025-A	across from E210	In room Hallway	Upper Left EIKay DF- wm	KTW
5/10/17	0615	0206 - 051017 - DF-025-B	↓	In room Hallway	SAA	KTW
5/10/17	0616	0206 - 051017 - DF-026-A		In room Hallway	Lower Right EIKay DF- wm	KTW
5/10/17	0617	0206 - 051017 - DF-026-B		In room Hallway	SAA	KTW
5/10/17	0619	0206 - 051017 - RS-003-A		girls RR across from E210	In room Hallway	Far left sink
5/10/17	0620	0206 - 051017 - RS-003-B	" "	In room Hallway	SAA	KTW
5/10/17		0206 - 051017 -		In room Hallway		
5/10/17		0206 - 051017 -		In room Hallway		
5/10/17		0206 - 051017 -		In room Hallway		
5/10/17		0206 - 051017 -		In room Hallway		

LOCATION TYPE: AF = athletic field; CS = cafeteria sink; DF = drinking fountain; IM = ice maker; KS = kindergarten sink; RS = restroom sink; SC = service connection; TL = teachers' lounge. SAMPLE TYPE: A = initial draw; B = flush; C = duplicate

**DEKALB COUNTY SCHOOL DISTRICT
LEAD IN DRINKING WATER FIELD DATA SHEET**

FACILITY NAME: ARABIA MOUNTAIN HIGH FACILITY
 ADDRESS: 6610 Browns Mill Road Lithonia, GA, 30038

FACILITY ID: 0206

DATE	TIME	SAMPLE ID (Facility ID-Date-Location Type-Sequential #-Sample Type)	NEAREST ROOM	LOCATION (circle)	DESCRIPTION	SAMPLER INIT.
5/10/17	0511	0206 - 051017 - DF - 001 - A	across hall from Rm D110	In room Hallway	Upper left Elkay DF - um	KTW
5/10/17	0512	0206 - 051017 - DF - 001 - B	↓	In room Hallway	SAA	KTW
5/10/17	0513	0206 - 051017 - DF - 002 - A		In room Hallway	Lower right Elkay DF - um	KTW
5/10/17	0514	0206 - 051017 - DF - 002 - B		In room Hallway	SAA	KTW
5/10/17	0517	0206 - 051017 - RS - 001 - A		across hall from D110 girls RR	In room Hallway	Far left sink
5/10/17	0518	0206 - 051017 - RS - 001 - B	↓	In room Hallway	SAA	KTW
5/10/17	0519	0206 - 051017 - RS - 001 - C		In room Hallway	SAA Flush dup.	KTW
5/10/17		0206 - 051017 -		In room Hallway		
5/10/17		0206 - 051017 -		In room Hallway		
5/10/17		0206 - 051017 -		In room Hallway		

LOCATION TYPE: AF = athletic field; CS = cafeteria sink; DF = drinking fountain; IM = ice maker; KS = kindergarten sink; RS = restroom sink; SC = service connection; TL = teachers' lounge. SAMPLE TYPE: A = initial draw; B = flush; C = duplicate

**DEKALB COUNTY SCHOOL DISTRICT
LEAD IN DRINKING WATER FIELD DATA SHEET**

FACILITY NAME: ARABIA MOUNTAIN HIGH FACILITY
 ADDRESS: 6610 Browns Mill Road Lithonia, GA, 30038

FACILITY ID: 0206

DATE	TIME	SAMPLE ID (Facility ID-Date-Location Type-Sequential #-Sample Type)	NEAREST ROOM	LOCATION (circle)	DESCRIPTION	SAMPLER INIT.
5/10/17	0528	0206 - 051017 - TL-001-A	C113	In room Hallway	only sink in AM	A7
5/10/17	0529	0206 - 051017 - TL-001-B	"	In room Hallway	"	A7
5/10/17	0533	0206 - 051017 - DF-005-A	across from C110	In room Hallway	upper left Elkay w/m DF	A7
5/10/17	0534	0206 - 051017 - DF-005-B	"	In room Hallway	"	A7
5/10/17	0535	0206 - 051017 - DF-006-A	"	In room Hallway	Lower right Elkay w/m DF	A7
5/10/17	0536	0206 - 051017 - DF-006-B	"	In room Hallway	"	A7
5/10/17	0540	0206 - 051017 - DF-007-A	by RR's across from B106	In room Hallway	upper left Elkay w/m DF	A7
5/10/17	0541	0206 - 051017 - DF-007-B	"	In room Hallway	"	A7
5/10/17	0542	0206 - 051017 - DF-008-A	"	In room Hallway	Lower right Elkay w/m DF	A7
5/10/17	0543	0206 - 051017 - DF-008-B	"	In room Hallway	"	A7

LOCATION TYPE: AF = athletic field; CS = cafeteria sink; DF = drinking fountain; IM = ice maker; KS = kindergarten sink; RS = restroom sink; SC = service connection; TL = teachers' lounge. SAMPLE TYPE: A = initial draw; B = flush; C = duplicate

**DEKALB COUNTY SCHOOL DISTRICT
LEAD IN DRINKING WATER FIELD DATA SHEET**

FACILITY NAME: ARABIA MOUNTAIN HIGH FACILITY
 ADDRESS: 6610 Browns Mill Road Lithonia, GA, 30038

FACILITY ID: 0206

DATE	TIME	SAMPLE ID (Facility ID-Date-Location Type-Sequential #-Sample Type)	NEAREST ROOM	LOCATION (circle)	DESCRIPTION	SAMPLER INIT.
5/10/17	0547	0206 - 051017 - DF-011-A	right of theater B115	In room Hallway	Upper Left Elkay w/m DF	AF
5/10/17	0548	0206 - 051017 - DF-011-B	"	In room Hallway	"	AF
5/10/17	0549	0206 - 051017 - DF-012-A	"	In room Hallway	Lower Right Elkay w/m DF	AF
5/10/17	0550	0206 - 051017 - DF-012-B	"	In room Hallway	"	AF
5/10/17	0553	0206 - 051017 - DF-023-A	across from A102	In room Hallway	Upper Left Elkay w/m DF	AF
5/10/17	0554	0206 - 051017 - DF-023-B	"	In room Hallway	"	AF
5/10/17	0556	0206 - 051017 - DF-024-A	"	In room Hallway	Lower Right Elkay w/m DF	AF
5/10/17	0557	0206 - 051017 - DF-024-B	"	In room Hallway	"	AF
5/10/17		0206 - 051017 -		In room Hallway		
5/10/17		0206 - 051017 -		In room Hallway		

LOCATION TYPE: AF = athletic field; CS = cafeteria sink; DF = drinking fountain; IM = ice maker; KS = kindergarten sink; RS = restroom sink; SC = service connection; TL = teachers' lounge. SAMPLE TYPE: A = initial draw; B = flush; C = duplicate

**DEKALB COUNTY SCHOOL DISTRICT
LEAD IN DRINKING WATER FIELD DATA SHEET**

FACILITY NAME: ARABIA MOUNTAIN HIGH FACILITY
 ADDRESS: 6610 Browns Mill Road Lithonia, GA, 30038

FACILITY ID: 0206

DATE	TIME	SAMPLE ID (Facility ID-Date-Location Type-Sequential #-Sample Type)	NEAREST ROOM	LOCATION (circle)	DESCRIPTION	SAMPLER INIT.
5/10/17	0505	0206 - 051017 - SC-001-A	B136 mech rm	In room Hallway	Spigot directly to right after entrance	A7
5/10/17	0512	0206 - 051017 - CS-001-A	Kitchen	In room Hallway	Food Prep Sink in corner	A7
5/10/17	0514	0206 - 051017 - CS-001-B	"	In room Hallway	"	A7
5/10/17	0513	0206 - 051017 - CS-001-C	"	In room Hallway	initial dup "	A7
5/10/17	0515	0206 - 051017 - IM-001-A	"	In room Hallway	Mushizaki near front	A7
5/10/17	0520	0206 - 051017 - DF-009-A	Cafeteria	In room Hallway	Upper Left Elkay WM DF	A7
5/10/17	0521	0206 - 051017 - DF-009-B	"	In room Hallway	"	A7
5/10/17	0522	0206 - 051017 - DF-010-A	"	In room Hallway	Lower Right Elkay WM DF	A7
5/10/17	0523	0206 - 051017 - DF-010-B	"	In room Hallway	"	A7
5/10/17		0206 - 051017 -		In room Hallway		

LOCATION TYPE: AF = athletic field; CS = cafeteria sink; DF = drinking fountain; IM = ice maker; KS = kindergarten sink; RS = restroom sink; SC = service connection; TL = teachers' lounge. SAMPLE TYPE: A = initial draw; B = flush; C = duplicate

**DEKALB COUNTY SCHOOL DISTRICT
LEAD IN DRINKING WATER FIELD DATA SHEET**

FACILITY NAME: ARABIA MOUNTAIN HIGH FACILITY
 ADDRESS: 6610 Browns Mill Road Lithonia, GA, 30038

FACILITY ID: 0206

DATE	TIME	SAMPLE ID (Facility ID-Date-Location Type-Sequential #-Sample Type)	NEAREST ROOM	LOCATION (circle)	DESCRIPTION	SAMPLER INIT.
5/10/17	0614	0206 - 051017 - DF-031-A	Left of B215	In room Hallway	Upper Left + Elkay w/m DF	AJ
5/10/17	0615	0206 - 051017 - DF-031-B	"	In room Hallway	"	AJ
5/10/17	0616	0206 - 051017 - DF-032-A	"	In room Hallway	Lower Right + Elkay w/m DF	AJ
5/10/17	0617	0206 - 051017 - DF-032-B	"	In room Hallway	"	AJ
5/10/17	0621	0206 - 051017 - DF-033-A	Left of B211	In room Hallway	Upper Left + Elkay w/m DF	AJ
5/10/17	0622	0206 - 051017 - DF-033-B	"	In room Hallway	"	AJ
5/10/17	0623	0206 - 051017 - DF-034-A	"	In room Hallway	Lower right Elkay w/m DF	AJ
5/10/17	0624	0206 - 051017 - DF-034-B	"	In room Hallway	"	AJ
5/10/17		0206 - 051017 -		In room Hallway		
5/10/17		0206 - 051017 -		In room Hallway		

LOCATION TYPE: AF = athletic field; CS = cafeteria sink; DF = drinking fountain; IM = ice maker; KS = kindergarten sink; RS = restroom sink; SC = service connection; TL = teachers' lounge. SAMPLE TYPE: A = initial draw; B = flush; C = duplicate

ATTACHMENT B
AES Laboratory Analytical Report

Leona Miles

From: NoReply@aesatlanta.net
Sent: Wednesday, May 24, 2017 3:39 PM
To: leona-miles@aem-net.com; tim-royer@aem-net.com
Subject: DCSD - 0206
Attachments: 1705896_REPORT.pdf; 1705896Invoice.pdf

Please see attached. If you have any questions or need further assistance please contact your project manager at 770-457-8177.

AES Reporting System

ANALYTICAL ENVIRONMENTAL SERVICES, INC.
3080 Presidential Drive ATLANTA, GA 30340
Tel: 770-457-8177 Fax: 770-457-8188
<http://www.aesatlanta.com>

NOTICE OF CONFIDENTIALITY: The information in this email and / or attachments may be legally privileged and is confidential information intended for the use of the individual or entity named in the email address. If the reader of this message is not the intended recipient, you are hereby notified that any use, dissemination, distribution, or copy of this email and / or attachments is strictly prohibited. If you have received this email in error, please notify Analytical Environmental Services Customer Service by telephone at (770) 457-8177 or by email at info@aesatlanta.com <<mailto:info@aesatlanta.com>> and delete the message. Thank you



ANALYTICAL ENVIRONMENTAL SERVICES, INC.

May 24, 2017

Leona Miles
Atlanta Environmental Mgmt
2580 NE Expressway
Atlanta GA 30345

TEL: (404) 329-9006
FAX: (404) 329-2057

RE: DCSD - 0206

Dear Leona Miles:

Order No: 1705896

Analytical Environmental Services, Inc. received 104 samples on 5/10/2017 9:06:00 AM for the analyses presented in following report.

No problems were encountered during the analyses. Additionally, all results for the associated Quality Control samples were within EPA and/or AES established limits. Any discrepancies associated with the analyses contained herein will be noted and submitted in the form of a project Case Narrative.

AES's accreditations are as follows:

-NELAC/Florida State Laboratory ID E87582 for analysis of Non-Potable Water, Solid & Chemical Materials, and Drinking Water Microbiology, effective 07/01/16-06/30/17.

State of Georgia, Department of Natural Resources ID #800 for analysis of Drinking Water Metals, effective 07/01/16-06/30/17 and Total Coliforms and E. coli, effective 04/25/17-04/24/20.

-NELAC/Louisiana Agency Interest No. 100818 for or analysis of Non-Potable Water and Solid & Chemical Materials, effective 07/01/16-06/30/17.

-AIHA-LAP, LLC Laboratory ID: 100671 for Industrial Hygiene samples (Organics, Metals, PCM Asbestos, Gravimetric), Environmental Lead (Paint, Soil, Dust Wipes, Air), and

Ioana Pacurar
Project Manager



ANALYTICAL ENVIRONMENTAL SERVICES, INC

3080 Presidential Drive, Atlanta GA 30340-3704
TEL.: (770) 457-8177 / TOLL-FREE (800) 972-4889 / FAX: (770) 457-8188

CHAIN OF CUSTODY

Work Order: 1705890

Date: 5/10/2017 Page 1 of 8

Form containing company information, sample list with columns for sample ID, date, time, matrix, and analysis results. Includes sections for project information, shipment method, and special instructions.

MATRIX CODES: A = Air GW = Groundwater SE = Sediment SO = Soil SW = Surface Water DW=Drinking Water W = Water (BlanDF) O = Other (specify)
PRESERVATIVE CODES: H+I = Hydrochloric acid + ice I = Ice only N = Nitric acid S+I = Sulfuric acid + ice S/M+I = Sodium Bisulfate/Methanol + ice O = Other (specify) NA = None



ANALYTICAL ENVIRONMENTAL SERVICES, INC
 3080 Presidential Drive, Atlanta GA 30340-3704
 TEL.: (770) 457-8177 / TOLL-FREE (800) 972-4889 / FAX: (770) 457-8188

CHAIN OF CUSTODY

Work Order: 1705894

Date: 5/10/2017 Page 2 of 8



COMPANY: Atlanta Environmental Management, Inc		ADDRESS: 2580 Northeast Expressway, NE Atlanta, GA 30345					ANALYSIS REQUESTED										Visit our website www.aesatlanta.com to check on the status of your results, place bottle orders, etc.		No # of Containers				
PHONE: (404) 329-9006		FAX: (404) 329-2057					Total Pb Method 200.8																
SAMPLED BY: <i>C. Jackson, K. West, A. Jensen</i>		SIGNATURE: <i>[Signature]</i>						PRESERVATION (See codes)										REMARKS					
#	SAMPLE ID	SAMPLED		Grab	Composite	Matrix (See codes)																	
		DATE	TIME				I																
1	0206-051017-DF-008-B	5/10/2017	0543	X		DW	X																
2	0206-051017-DF-009-A	5/10/2017	0520	X		DW	X																
3	0206-051017-DF-009-B	5/10/2017	0521	X		DW	X																
4	0206-051017-DF-010-A	5/10/2017	0522	X		DW	X																
5	0206-051017-DF-010-B	5/10/2017	0523	X		DW	X																
6	0206-051017-DF-011-A	5/10/2017	0547	X		DW	X																
7	0206-051017-DF-011-B	5/10/2017	0548	X		DW	X																
8	0206-051017-DF-012-A	5/10/2017	0549	X		DW	X																
9	0206-051017-DF-012-B	5/10/2017	0550	X		DW	X																
10	0206-051017-DF-013-A	5/10/2017	0508	X		DW	X																
11	0206-051017-DF-013-B	5/10/2017	0509	X		DW	X																
12	0206-051017-DF-014-A	5/10/2017	0510	X		DW	X																
13	0206-051017-DF-014-B	5/10/2017	0511	X		DW	X																
14	0206-051017-DF-015-A	5/10/2017	0515	X		DW	X																
15	0206-051017-DF-015-B	5/10/2017	0516	X		DW	X																
RELINQUISHED BY		DATE/TIME		RECEIVED BY		DATE/TIME		PROJECT INFORMATION										RECEIPT					
1: <i>[Signature]</i>		5/10/17 8:26A		1: <i>[Signature]</i>		5/10/17 0828		PROJECT NAME: DCSD										Total # of Containers					
2: <i>[Signature]</i>		5/10/17 0906		2: <i>[Signature]</i>		5/10/17 0906		PROJECT #: 1561-1601										Turnaround Time Request					
3:				3:				SITE ADDRESS: 206										○ Standard 5 Business Days					
								SEND REPORT TO: Leona Miles and Tim Royer										○ 2 Business Day Rush					
SPECIAL INSTRUCTIONS/COMMENTS: Preserve at the Lab per protocol				SHIPMENT METHOD				INVOICE TO: (IF DIFFERENT FROM ABOVE) leona-miles@aem-net.com; tim-royer@aem-net.com										○ Next Business Day Rush					
				OUT / / VIA:														○ Same Day Rush (auth req.)					
				IN / / VIA:														● Other: 10 business Days					
				CLIENT FedEx UPS MAIL COURIER				QUOTE #:										STATE PROGRAM (if any):					
				GREYHOUND OTHER				PO#:										E-mail? Y/N: Fax? Y/N					

SAMPLES RECEIVED AFTER 3PM OR SATURDAY ARE CONSIDERED AS RECEIVED ON THE NEXT BUSINESS DAY; IF NO TAT IS MARKED ON COC AES WILL PROCEED AS STANDARD TAT.
 SAMPLES ARE DISPOSED OF 30 DAYS AFTER COMPLETION OF REPORT UNLESS OTHER ARRANGEMENTS ARE MADE.

MATRIX CODES: A = Air GW = Groundwater SE = Sediment SO = Soil SW = Surface Water DW=Drinking Water W = Water (BlanDF) O = Other (specify)
 PRESERVATIVE CODES: H+I = Hydrochloric acid + ice I = Ice only N = Nitric acid S+I = Sulfuric acid + ice S/M+I = Sodium Bisulfate/Methanol + ice O = Other (specify) NA = None
 Page 3 of 120
 White Copy - Original; Yellow Copy - Client



ANALYTICAL ENVIRONMENTAL SERVICES, INC

3080 Presidential Drive, Atlanta GA 30340-3704
 TEL.: (770) 457-8177 / TOLL-FREE (800) 972-4889 / FAX: (770) 457-8188

CHAIN OF CUSTODY

Work Order: 1705896

Date: 5/10/2017

Page 3 of 8

COMPANY: Atlanta Environmental Management, Inc		ADDRESS: 2580 Northeast Expressway, NE Atlanta, GA 30345					ANALYSIS REQUESTED										Visit our website www.aesatlanta.com to check on the status of your results, place bottle orders, etc.	No # of Containers																																														
PHONE: (404) 329-9006		FAX: (404) 329-2057					<table border="1"> <tr> <td colspan="10">Total Pb Method 200.8</td> <td colspan="10">PRESERVATION (See codes)</td> </tr> <tr> <td>I</td><td></td><td></td><td></td><td></td><td></td><td></td><td></td><td></td><td></td><td></td><td></td><td></td><td></td><td></td><td></td><td></td><td></td><td></td><td></td><td></td><td></td><td></td><td></td><td></td><td></td> </tr> </table>												Total Pb Method 200.8										PRESERVATION (See codes)										I																									
Total Pb Method 200.8																			PRESERVATION (See codes)																																													
I																																																																
SAMPLED BY: <i>C. Jackson, K. West, A. Jensen</i>		SIGNATURE: <i>[Signature]</i>															REMARKS																																															
#	SAMPLE ID	DATE	TIME	Grab	Composite	Matrix (See codes)																																																										
1	0206-051017-DF-016-A	5/10/2017	0517	X		DW	X																																																									
2	0206-051017-DF-016-B	5/10/2017	0518	X		DW	X																																																									
3	0206-051017-DF-017-A	5/10/2017	0522	X		DW	X																																																									
4	0206-051017-DF-017-B	5/10/2017	0523	X		DW	X																																																									
5	0206-051017-DF-018-A	5/10/2017	0524	X		DW	X																																																									
6	0206-051017-DF-018-B	5/10/2017	0525	X		DW	X																																																									
7	0206-051017-DF-019-A	5/10/2017	0531	X		DW	X																																																									
8	0206-051017-DF-019-B	5/10/2017	0532	X		DW	X																																																									
9	0206-051017-DF-020-A	5/10/2017	0533	X		DW	X																																																									
10	0206-051017-DF-020-B	5/10/2017	0534	X		DW	X																																																									
11	0206-051017-DF-021-A	5/10/2017	0535	X		DW	X																																																									
12	0206-051017-DF-021-B	5/10/2017	0536	X		DW	X																																																									
13	0206-051017-DF-022-A	5/10/2017	0537	X		DW	X																																																									
14	0206-051017-DF-022-B	5/10/2017	0538	X		DW	X																																																									
15	0206-051017-DF-023-A	5/10/2017	0553	X		DW	X																																																									

RELINQUISHED BY 1: <i>[Signature]</i> 2: <i>[Signature]</i> 3:	DATE/TIME 1: 5/10/17 8:26A 2: 5/10/17 0906 3:	RECEIVED BY 1: <i>[Signature]</i> 2: <i>[Signature]</i> 3:	DATE/TIME 1: 5/10/17 0826 2: 5/10/17 0906 3:	PROJECT INFORMATION PROJECT NAME: DCSO PROJECT #: 1561-1601 SITE ADDRESS: 206 SEND REPORT TO: Leona Miles and Tim Royer INVOICE TO: (IF DIFFERENT FROM ABOVE) leona-miles@aem-net.com; tim-royer@aem-net.com QUOTE #: _____ PO#: _____		RECEIPT Total # of Containers Turnaround Time Request <input type="radio"/> Standard 5 Business Days <input type="radio"/> 2 Business Day Rush <input type="radio"/> Next Business Day Rush <input type="radio"/> Same Day Rush (auth req.) <input checked="" type="radio"/> Other: 10 business Days STATE PROGRAM (if any): _____ E-mail? Y/N: _____ Fax? Y/N: _____ DATA PACKAGE: I II III IV	
SPECIAL INSTRUCTIONS/COMMENTS: Preserve at the Lab per protocol				SHIPMENT METHOD OUT 1 1 VIA: IN 1 1 VIA: CLIENT FedEx UPS MAIL COURIER GREYHOUND OTHER			

SAMPLES RECEIVED AFTER 3PM OR SATURDAY ARE CONSIDERED AS RECEIVED ON THE NEXT BUSINESS DAY; IF NO TAT IS MARKED ON COC AES WILL PROCEED AS STANDARD TAT.
 SAMPLES ARE DISPOSED OF 30 DAYS AFTER COMPLETION OF REPORT UNLESS OTHER ARRANGEMENTS ARE MADE.

MATRIX CODES: A = Air GW = Groundwater SE = Sediment SO = Soil SW = Surface Water DW = Drinking Water W = Water (Blanks) O = Other (specify)
 PRESERVATIVE CODES: H+I = Hydrochloric acid + ice I = Ice only N = Nitric acid S+I = Sulfuric acid + ice S/M+I = Sodium Bisulfate/Methanol + ice O = Other (specify) NA = None



ANALYTICAL ENVIRONMENTAL SERVICES, INC

3080 Presidential Drive, Atlanta GA 30340-3704
 TEL.: (770) 457-8177 / TOLL-FREE (800) 972-4889 / FAX: (770) 457-8188

CHAIN OF CUSTODY

Work Order: 1705896

Date: 5/10/2017 Page 4 of 8

COMPANY: Atlanta Environmental Management, Inc		ADDRESS: 2580 Northeast Expressway, NE Atlanta, GA 30345					ANALYSIS REQUESTED										Visit our website www.aesatlanta.com to check on the status of your results, place bottle orders, etc.		No # of Containers							
PHONE: (404) 329-9006		FAX: (404) 329-2057					Total Pb Method 200.8																			
SAMPLED BY: <i>C. Jackson K. West A. Jensen</i>		SIGNATURE: <i>[Signature]</i>					PRESERVATION (See codes)										REMARKS									
#	SAMPLE ID	SAMPLED		Grab	Composite	Matrix (See codes)	I																			
		DATE	TIME																							
1	0206-051017-DF-023-B	5/10/2017	0554	X		DW	X																			
2	0206-051017-DF-024-A	5/10/2017	0556	X		DW	X																			
3	0206-051017-DF-024-B	5/10/2017	0557	X		DW	X																			
4	0206-051017-DF-025-A	5/10/2017	0614	X		DW	X																			
5	0206-051017-DF-025-B	5/10/2017	0615	X		DW	X																			
6	0206-051017-DF-026-A	5/10/2017	0616	X		DW	X																			
7	0206-051017-DF-026-B	5/10/2017	0617	X		DW	X																			
8	0206-051017-DF-027-A	5/10/2017	0609	X		DW	X																			
9	0206-051017-DF-027-B	5/10/2017	0610	X		DW	X																			
10	0206-051017-DF-028-A	5/10/2017	0611	X		DW	X																			
11	0206-051017-DF-028-B	5/10/2017	0612	X		DW	X																			
12	0206-051017-DF-029-A	5/10/2017	0603	X		DW	X																			
13	0206-051017-DF-029-B	5/10/2017	0604	X		DW	X																			
14	0206-051017-DF-030-A	5/10/2017	0605	X		DW	X																			
15	0206-051017-DF-030-B	5/10/2017	0606	X		DW	X																			

RELINQUISHED BY		DATE/TIME		RECEIVED BY		DATE/TIME		PROJECT INFORMATION				RECEIPT	
1: <i>[Signature]</i>		5/10/17 8:26A		1: <i>[Signature]</i>		5/10/17 0826		PROJECT NAME: DCSD				Total # of Containers	
2: <i>[Signature]</i>		5/10/17 0906		2: <i>[Signature]</i>		5/10/17 0906		PROJECT #: 1561-1601				Turnaround Time Request	
3:				3:				SITE ADDRESS: 206				<input type="radio"/> Standard 5 Business Days <input type="radio"/> 2 Business Day Rush <input type="radio"/> Next Business Day Rush <input type="radio"/> Same Day Rush (auth req.) <input checked="" type="radio"/> Other: 10 business Days	
SPECIAL INSTRUCTIONS/COMMENTS: Preserve at the Lab per protocol				SHIPMENT METHOD				INVOICE TO: (IF DIFFERENT FROM ABOVE) leona-miles@aem-net.com; tim-royer@aem-net.com				STATE PROGRAM (if any): _____	
				OUT / / VIA: IN / / VIA: <input checked="" type="radio"/> CLIENT FedEx UPS MAIL COURIER GREYHOUND OTHER _____				QUOTE #: _____ PO#: _____				E-mail? Y/N: _____ Fax? Y/N: _____ DATA PACKAGE: I II III IV	

SAMPLES RECEIVED AFTER 3PM OR SATURDAY ARE CONSIDERED AS RECEIVED ON THE NEXT BUSINESS DAY; IF NO TAT IS MARKED ON COC AES WILL PROCEED AS STANDARD TAT.
 SAMPLES ARE DISPOSED OF 30 DAYS AFTER COMPLETION OF REPORT UNLESS OTHER ARRANGEMENTS ARE MADE.



COMPANY: Atlanta Environmental Management, Inc		ADDRESS: 2580 Northeast Expressway, NE Atlanta, GA 30345					ANALYSIS REQUESTED										Visit our website <u>www.aesatlanta.com</u> to check on the status of your results, place bottle orders, etc.		No # of Containers
PHONE: (404) 329-9006		FAX: (404) 329-2057					Total Pb Method 200.8										REMARKS		
SAMPLED BY: <i>C. Jackson, K. West, A. Jensen</i>		SIGNATURE: <i>[Signature]</i>					PRESERVATION (See codes)												
#	SAMPLE ID	DATE	TIME	Grab	Composite	Matrix (See codes)	I												
1	0206-051017-DF-031-A	5/10/2017	0614	X		DW	X												
2	0206-051017-DF-031-B	5/10/2017	0615	X		DW	X												
3	0206-051017-DF-032-A	5/10/2017	0616	X		DW	X												
4	0206-051017-DF-032-B	5/10/2017	0617	X		DW	X												
5	0206-051017-DF-033-A	5/10/2017	0621	X		DW	X												
6	0206-051017-DF-033-B	5/10/2017	0622	X		DW	X												
7	0206-051017-DF-034-A	5/10/2017	0623	X		DW	X												
8	0206-051017-DF-034-B	5/10/2017	0624	X		DW	X												
9	0206-051017-DF-035-A	5/10/2017	0617	X		DW	X												
10	0206-051017-DF-035-B	5/10/2017	0618	X		DW	X												
11	0206-051017-DF-036-A	5/10/2017	0615	X		DW	X												
12	0206-051017-DF-036-B	5/10/2017	0616	X		DW	X												
13	0206-051017-DF-037-A	5/10/2017	0610	X		DW	X												
14	0206-051017-DF-037-B	5/10/2017	0611	X		DW	X												
15	0206-051017-RS-001-A	5/10/2017	0517	X		DW	X												
RELINQUISHED BY		DATE/TIME		RECEIVED BY		DATE/TIME		PROJECT INFORMATION										RECEIPT	
1: <i>[Signature]</i>		5/10/17 8:26A		1: <i>[Signature]</i>		5/10/17 0826		PROJECT NAME: DCS D										Total # of Containers	
2: <i>[Signature]</i>		5/10/17 0906		2: <i>[Signature]</i>		5/10/17 0906		PROJECT #: 1561-1601										Turnaround Time Request <input type="radio"/> Standard 5 Business Days <input type="radio"/> 2 Business Day Rush <input type="radio"/> Next Business Day Rush <input type="radio"/> Same Day Rush (auth req.) <input checked="" type="radio"/> Other: 10 business Days	
3:				3:				SITE ADDRESS: 206											
SPECIAL INSTRUCTIONS/COMMENTS: Preserve at the Lab per protocol				SHIPMENT METHOD				SEND REPORT TO: Leona Miles and Tim Royer										STATE PROGRAM (if any):	
				OUT / / VIA:				INVOICE TO: (IF DIFFERENT FROM ABOVE) leona-miles@aem-net.com; tim-royer@aem-net.com										E-mail? Y/N: Fax? Y/N	
				IN <input checked="" type="checkbox"/> CLIENT FedEx UPS MAIL COURIER				QUOTE #:										DATA PACKAGE: I II III IV	
				GREYHOUND OTHER				PO#:											

SAMPLES RECEIVED AFTER 3PM OR SATURDAY ARE CONSIDERED AS RECEIVED ON THE NEXT BUSINESS DAY; IF NO TAT IS MARKED ON COC AES WILL PROCEED AS STANDARD TAT.
 SAMPLES ARE DISPOSED OF 30 DAYS AFTER COMPLETION OF REPORT UNLESS OTHER ARRANGEMENTS ARE MADE.



ANALYTICAL ENVIRONMENTAL SERVICES, INC
 3080 Presidential Drive, Atlanta GA 30340-3704
 TEL.: (770) 457-8177 / TOLL-FREE (800) 972-4889 / FAX: (770) 457-8188

CHAIN OF CUSTODY

Work Order: 1705890

Date: 5/10/2017 Page 6 of 8

#	SAMPLE ID	SAMPLED		Grab	Composite	Matrix (See codes)	ANALYSIS REQUESTED										REMARKS	No # of Containers
		DATE	TIME				PRESERVATION (See codes)											
							I											
1	0206-051017-RS-001-B	5/10/2017	0518	X		DW	X											
2	0206-051017-RS-001-C	5/10/2017	0519	X		DW	X											
3	0206-051017-RS-002-A	5/10/2017	0600	X		DW	X											
4	0206-051017-RS-002-B	5/10/2017	0601	X		DW	X											
5	0206-051017-RS-003-A	5/10/2017	0619	X		DW	X											
6	0206-051017-RS-003-B	5/10/2017	0620	X		DW	X											
7	0206-051017-TL-001-A	5/10/2017	0528	X		DW	X											
8	0206-051017-TL-001-B	5/10/2017	0529	X		DW	X											
9	0206-051017-TL-002-A	5/10/2017		X		DW											DNE not sampled	
10	0206-051017-TL-002-B	5/10/2017		X		DW												
11	0206-051017-CS-001-A	5/10/2017	0512	X		DW	X											
12	0206-051017-CS-001-B	5/10/2017	0514	X		DW	X											
13	0206-051017-CS-001-C	5/10/2017	0513	X		DW	X											
14	0206-051017-CS-002-A	5/10/2017	0536	X		DW	X											
15	0206-051017-CS-002-B	5/10/2017	0537	X		DW	X											

RELINQUISHED BY		DATE/TIME	RECEIVED BY		DATE/TIME	PROJECT INFORMATION		RECEIPT	
1: <i>[Signature]</i>		5/10/17 8:26A	1: <i>[Signature]</i>		5/10/17 0826	PROJECT NAME: DCSD		Total # of Containers	
2: <i>[Signature]</i>		5/10/17 0906	2: <i>[Signature]</i>		5/10/17 0906	PROJECT #: 1561-1601		Turnaround Time Request	
3: <i>[Signature]</i>			3: <i>[Signature]</i>			SITE ADDRESS: 206		<input type="radio"/> Standard 5 Business Days	
						SEND REPORT TO: Leona Miles and Tim Royer		<input type="radio"/> 2 Business Day Rush	
SPECIAL INSTRUCTIONS/COMMENTS:				SHIPMENT METHOD		INVOICE TO:		<input type="radio"/> Next Business Day Rush	
Preserve at the Lab per protocol				OUT / / VIA:		(IF DIFFERENT FROM ABOVE)		<input type="radio"/> Same Day Rush (auth req.)	
				IN / / VIA:		leona-miles@aem-net.com; tim-royer@aem-net.com		<input type="radio"/> Other: 10 business Days	
				CLIENT FedEx UPS MAIL COURIER		QUOTE #: _____ PO#: _____		STATE PROGRAM (if any): _____	
				GREYHOUND OTHER _____				E-mail? Y / N: _____ Fax? Y / N _____	
DATA PACKAGE: I II III IV									

SAMPLES RECEIVED AFTER 3PM OR SATURDAY ARE CONSIDERED AS RECEIVED ON THE NEXT BUSINESS DAY; IF NO TAT IS MARKED ON COC AES WILL PROCEED AS STANDARD TAT.
 SAMPLES ARE DISPOSED OF 30 DAYS AFTER COMPLETION OF REPORT UNLESS OTHER ARRANGEMENTS ARE MADE.

MATRIX CODES: A = Air GW = Groundwater SE = Sediment SO = Soil SW = Surface Water DW = Drinking Water W = Water (Blanks) O = Other (specify)
 PRESERVATIVE CODES: H+I = Hydrochloric acid + ice I = Ice only N = Nitric acid S+I = Sulfuric acid + ice S/M+I = Sodium Bisulfate/Methanol + ice O = Other (specify) NA = None



ANALYTICAL ENVIRONMENTAL SERVICES, INC

3080 Presidential Drive, Atlanta GA 30340-3704
TEL.: (770) 457-8177 / TOLL-FREE (800) 972-4889 / FAX: (770) 457-8188

CHAIN OF CUSTODY

Work Order: 1705890

Date: 5/10/2017 Page 7 of 8

Form containing company information, sample list with columns for sample ID, date, time, grab/composite/matrix, analysis requested, and remarks. Includes sections for Relinquished/Received by, Project Information, and Special Instructions/Comments.

MATRIX CODES: A = Air GW = Groundwater SE = Sediment SO = Soil SW = Surface Water DW=Drinking Water W = Water (Blanks) O = Other (specify)
PRESERVATIVE CODES: H+I = Hydrochloric acid + ice I = Ice only N = Nitric acid S+I = Sulfuric acid + ice S/M+I = Sodium Bisulfate/Methanol + ice O = Other (specify) NA = None



ANALYTICAL ENVIRONMENTAL SERVICES, INC
 3080 Presidential Drive, Atlanta GA 30340-3704
 TEL.: (770) 457-8177 / TOLL-FREE (800) 972-4889 / FAX: (770) 457-8188

CHAIN OF CUSTODY

Work Order: 1705896

Date: 5/10/2017 Page 8 of 8

COMPANY: Atlanta Environmental Management, Inc			ADDRESS: 2580 Northeast Expressway, NE Atlanta, GA 30345				ANALYSIS REQUESTED												Visit our website www.aesatlanta.com to check on the status of your results, place bottle orders, etc.		No # of Containers																							
PHONE: (404) 329-9006			FAX: (404) 329-2057				<table border="1"> <tr> <td>Total Pb Method 200.8</td> <td></td><td></td><td></td><td></td><td></td><td></td><td></td><td></td><td></td><td></td><td></td><td></td><td></td><td></td><td></td><td></td><td></td><td></td><td></td><td></td><td></td><td></td><td></td> </tr> </table>												Total Pb Method 200.8																									REMARKS
Total Pb Method 200.8																																												
SAMPLED BY: C. Jackson, K. West, A. Jensen			SIGNATURE: 				PRESERVATION (See codes)																																					
#	SAMPLE ID	SAMPLED		Grab	Composite	Matrix (See codes)	I																																					
		DATE	TIME																																									
1	0206-051017-DF-038-B	5/10/2017	0609	X		DW	X																																					
2		5/10/2017		X		DW	X																																					
3		5/10/2017		X		DW	X																																					
4		5/10/2017		X		DW	X																																					
5		5/10/2017		X		DW	X																																					
6																																												
7																																												
8																																												
9																																												
10																																												
11																																												
12																																												
13																																												
14																																												
15																																												
RELINQUISHED BY		DATE/TIME		RECEIVED BY		DATE/TIME		PROJECT INFORMATION												RECEIPT																								
1:		5/10/17 8:26A		1:		5/10/17 0826		PROJECT NAME: DCSD												Total # of Containers																								
2:		5/10/17 0906		2:		5/10/17 0906		PROJECT #: 1561-1601												<input type="radio"/> Turnaround Time Request <input type="radio"/> Standard 5 Business Days <input type="radio"/> 2 Business Day Rush <input type="radio"/> Next Business Day Rush <input type="radio"/> Same Day Rush (auth req.) <input checked="" type="radio"/> Other: 10 business Days																								
3:				3:				SITE ADDRESS: 206												STATE PROGRAM (if any): _____																								
SPECIAL INSTRUCTIONS/COMMENTS:				SHIPMENT METHOD				SEND REPORT TO: Leona Miles and Tim Royer												E-mail? Y/N: _____ Fax? Y/N _____																								
Preserve at the Lab per protocol				OUT / / VIA:				INVOICE TO: (IF DIFFERENT FROM ABOVE)												DATA PACKAGE: I II III IV																								
				IN / / VIA:		CLIENT FedEx UPS MAIL COURIER		leona-miles@aem-net.com; tim-royer@aem-net.com																																				
				GREYHOUND OTHER				QUOTE #: _____ PO#: _____																																				

SAMPLES RECEIVED AFTER 3PM OR SATURDAY ARE CONSIDERED AS RECEIVED ON THE NEXT BUSINESS DAY; IF NO TAT IS MARKED ON COC AES WILL PROCEED AS STANDARD TAT.
 SAMPLES ARE DISPOSED OF 30 DAYS AFTER COMPLETION OF REPORT UNLESS OTHER ARRANGEMENTS ARE MADE.

MATRIX CODES: A = Air GW = Groundwater SE = Sediment SO = Soil SW = Surface Water DW=Drinking Water W = Water (Blanks) O = Other (specify)
 PRESERVATIVE CODES: H+I = Hydrochloric acid + ice I = Ice only N = Nitric acid S+I = Sulfuric acid + ice S/M+I = Sodium Bisulfate/Methanol + ice O = Other (specify) NA = None

Analytical Environmental Services, Inc

Date: 24-May-17

Client: Atlanta Environmental Mgmt	Client Sample ID: 0206-051017-DF-001-A
Project Name: DCSD - 0206	Collection Date: 5/10/2017 5:11:00 AM
Lab ID: 1705896-001	Matrix: Drinking Water

Analyses	Result	Reporting Limit	Qual	Units	BatchID	Dilution Factor	Date Analyzed	Analyst
Trace Elements by ICP/MS E200.8								
				(E200.2)				
Lead	BRL	1.00		ug/L	243012	1	05/23/2017 13:12	JR

Qualifiers:

- * Value exceeds maximum contaminant level
- BRL Below reporting limit
- H Holding times for preparation or analysis exceeded
- N Analyte not NELAC certified
- B Analyte detected in the associated method blank
- > Greater than Result value

- E Estimated (value above quantitation range)
- S Spike Recovery outside limits due to matrix
- Narr See case narrative
- NC Not confirmed
- < Less than Result value
- J Estimated value detected below Reporting Limit

Analytical Environmental Services, Inc

Date: 24-May-17

Client: Atlanta Environmental Mgmt	Client Sample ID: 0206-051017-DF-001-B
Project Name: DCSD - 0206	Collection Date: 5/10/2017 5:12:00 AM
Lab ID: 1705896-002	Matrix: Drinking Water

Analyses	Result	Reporting Limit	Qual	Units	BatchID	Dilution Factor	Date Analyzed	Analyst
Trace Elements by ICP/MS E200.8					(E200.2)			
Lead	BRL	1.00		ug/L	243012	1	05/23/2017 13:29	JR

Qualifiers:

- * Value exceeds maximum contaminant level
- BRL Below reporting limit
- H Holding times for preparation or analysis exceeded
- N Analyte not NELAC certified
- B Analyte detected in the associated method blank
- > Greater than Result value

- E Estimated (value above quantitation range)
- S Spike Recovery outside limits due to matrix
- Narr See case narrative
- NC Not confirmed
- < Less than Result value
- J Estimated value detected below Reporting Limit

Analytical Environmental Services, Inc

Date: 24-May-17

Client: Atlanta Environmental Mgmt	Client Sample ID: 0206-051017-DF-002-A
Project Name: DCSD - 0206	Collection Date: 5/10/2017 5:13:00 AM
Lab ID: 1705896-003	Matrix: Drinking Water

Analyses	Result	Reporting Limit	Qual	Units	BatchID	Dilution Factor	Date Analyzed	Analyst
Trace Elements by ICP/MS E200.8								
				(E200.2)				
Lead	BRL	1.00		ug/L	243012	1	05/23/2017 13:33	JR

Qualifiers:

- * Value exceeds maximum contaminant level
- BRL Below reporting limit
- H Holding times for preparation or analysis exceeded
- N Analyte not NELAC certified
- B Analyte detected in the associated method blank
- > Greater than Result value

- E Estimated (value above quantitation range)
- S Spike Recovery outside limits due to matrix
- Narr See case narrative
- NC Not confirmed
- < Less than Result value
- J Estimated value detected below Reporting Limit

Analytical Environmental Services, Inc

Date: 24-May-17

Client: Atlanta Environmental Mgmt	Client Sample ID: 0206-051017-DF-002-B
Project Name: DCSD - 0206	Collection Date: 5/10/2017 5:14:00 AM
Lab ID: 1705896-004	Matrix: Drinking Water

Analyses	Result	Reporting Limit	Qual	Units	BatchID	Dilution Factor	Date Analyzed	Analyst
Trace Elements by ICP/MS E200.8					(E200.2)			
Lead	BRL	1.00		ug/L	243012	1	05/23/2017 13:36	JR

Qualifiers:

- * Value exceeds maximum contaminant level
- BRL Below reporting limit
- H Holding times for preparation or analysis exceeded
- N Analyte not NELAC certified
- B Analyte detected in the associated method blank
- > Greater than Result value

- E Estimated (value above quantitation range)
- S Spike Recovery outside limits due to matrix
- Narr See case narrative
- NC Not confirmed
- < Less than Result value
- J Estimated value detected below Reporting Limit

Analytical Environmental Services, Inc

Date: 24-May-17

Client: Atlanta Environmental Mgmt	Client Sample ID: 0206-051017-DF-003-A
Project Name: DCSD - 0206	Collection Date: 5/10/2017 5:51:00 AM
Lab ID: 1705896-005	Matrix: Drinking Water

Analyses	Result	Reporting Limit	Qual	Units	BatchID	Dilution Factor	Date Analyzed	Analyst
Trace Elements by ICP/MS E200.8					(E200.2)			
Lead	BRL	1.00		ug/L	243012	1	05/23/2017 14:21	JR

Qualifiers:

- * Value exceeds maximum contaminant level
- BRL Below reporting limit
- H Holding times for preparation or analysis exceeded
- N Analyte not NELAC certified
- B Analyte detected in the associated method blank
- > Greater than Result value

- E Estimated (value above quantitation range)
- S Spike Recovery outside limits due to matrix
- Narr See case narrative
- NC Not confirmed
- < Less than Result value
- J Estimated value detected below Reporting Limit

Analytical Environmental Services, Inc

Date: 24-May-17

Client: Atlanta Environmental Mgmt	Client Sample ID: 0206-051017-DF-003-B
Project Name: DCSD - 0206	Collection Date: 5/10/2017 5:52:00 AM
Lab ID: 1705896-006	Matrix: Drinking Water

Analyses	Result	Reporting Limit	Qual	Units	BatchID	Dilution Factor	Date Analyzed	Analyst
Trace Elements by ICP/MS E200.8					(E200.2)			
Lead	BRL	1.00		ug/L	243012	1	05/23/2017 14:25	JR

Qualifiers:

- * Value exceeds maximum contaminant level
- BRL Below reporting limit
- H Holding times for preparation or analysis exceeded
- N Analyte not NELAC certified
- B Analyte detected in the associated method blank
- > Greater than Result value

- E Estimated (value above quantitation range)
- S Spike Recovery outside limits due to matrix
- Narr See case narrative
- NC Not confirmed
- < Less than Result value
- J Estimated value detected below Reporting Limit

Analytical Environmental Services, Inc

Date: 24-May-17

Client: Atlanta Environmental Mgmt	Client Sample ID: 0206-051017-DF-004-A
Project Name: DCSD - 0206	Collection Date: 5/10/2017 5:53:00 AM
Lab ID: 1705896-007	Matrix: Drinking Water

Analyses	Result	Reporting Limit	Qual	Units	BatchID	Dilution Factor	Date Analyzed	Analyst
Trace Elements by ICP/MS E200.8								
				(E200.2)				
Lead	BRL	1.00		ug/L	243012	1	05/23/2017 14:28	JR

Qualifiers:

- * Value exceeds maximum contaminant level
- BRL Below reporting limit
- H Holding times for preparation or analysis exceeded
- N Analyte not NELAC certified
- B Analyte detected in the associated method blank
- > Greater than Result value

- E Estimated (value above quantitation range)
- S Spike Recovery outside limits due to matrix
- Narr See case narrative
- NC Not confirmed
- < Less than Result value
- J Estimated value detected below Reporting Limit

Analytical Environmental Services, Inc

Date: 24-May-17

Client: Atlanta Environmental Mgmt	Client Sample ID: 0206-051017-DF-004-B
Project Name: DCSD - 0206	Collection Date: 5/10/2017 5:54:00 AM
Lab ID: 1705896-008	Matrix: Drinking Water

Analyses	Result	Reporting Limit	Qual	Units	BatchID	Dilution Factor	Date Analyzed	Analyst
Trace Elements by ICP/MS E200.8					(E200.2)			
Lead	BRL	1.00		ug/L	243012	1	05/23/2017 14:32	JR

Qualifiers:

- * Value exceeds maximum contaminant level
- BRL Below reporting limit
- H Holding times for preparation or analysis exceeded
- N Analyte not NELAC certified
- B Analyte detected in the associated method blank
- > Greater than Result value

- E Estimated (value above quantitation range)
- S Spike Recovery outside limits due to matrix
- Narr See case narrative
- NC Not confirmed
- < Less than Result value
- J Estimated value detected below Reporting Limit

Analytical Environmental Services, Inc

Date: 24-May-17

Client: Atlanta Environmental Mgmt	Client Sample ID: 0206-051017-DF-005-A
Project Name: DCSD - 0206	Collection Date: 5/10/2017 5:33:00 AM
Lab ID: 1705896-009	Matrix: Drinking Water

Analyses	Result	Reporting Limit	Qual	Units	BatchID	Dilution Factor	Date Analyzed	Analyst
Trace Elements by ICP/MS E200.8					(E200.2)			
Lead	BRL	1.00		ug/L	243012	1	05/23/2017 14:35	JR

Qualifiers:

- * Value exceeds maximum contaminant level
- BRL Below reporting limit
- H Holding times for preparation or analysis exceeded
- N Analyte not NELAC certified
- B Analyte detected in the associated method blank
- > Greater than Result value

- E Estimated (value above quantitation range)
- S Spike Recovery outside limits due to matrix
- Narr See case narrative
- NC Not confirmed
- < Less than Result value
- J Estimated value detected below Reporting Limit

Analytical Environmental Services, Inc

Date: 24-May-17

Client: Atlanta Environmental Mgmt	Client Sample ID: 0206-051017-DF-005-B
Project Name: DCSD - 0206	Collection Date: 5/10/2017 5:34:00 AM
Lab ID: 1705896-010	Matrix: Drinking Water

Analyses	Result	Reporting Limit	Qual	Units	BatchID	Dilution Factor	Date Analyzed	Analyst
Trace Elements by ICP/MS E200.8					(E200.2)			
Lead	BRL	1.00		ug/L	243012	1	05/23/2017 14:39	JR

Qualifiers:

- * Value exceeds maximum contaminant level
- BRL Below reporting limit
- H Holding times for preparation or analysis exceeded
- N Analyte not NELAC certified
- B Analyte detected in the associated method blank
- > Greater than Result value

- E Estimated (value above quantitation range)
- S Spike Recovery outside limits due to matrix
- Narr See case narrative
- NC Not confirmed
- < Less than Result value
- J Estimated value detected below Reporting Limit

Analytical Environmental Services, Inc

Date: 24-May-17

Client: Atlanta Environmental Mgmt	Client Sample ID: 0206-051017-DF-006-A
Project Name: DCSD - 0206	Collection Date: 5/10/2017 5:35:00 AM
Lab ID: 1705896-011	Matrix: Drinking Water

Analyses	Result	Reporting Limit	Qual	Units	BatchID	Dilution Factor	Date Analyzed	Analyst
Trace Elements by ICP/MS E200.8								
				(E200.2)				
Lead	BRL	1.00		ug/L	243012	1	05/23/2017 13:22	JR

Qualifiers:

- * Value exceeds maximum contaminant level
- BRL Below reporting limit
- H Holding times for preparation or analysis exceeded
- N Analyte not NELAC certified
- B Analyte detected in the associated method blank
- > Greater than Result value

- E Estimated (value above quantitation range)
- S Spike Recovery outside limits due to matrix
- Narr See case narrative
- NC Not confirmed
- < Less than Result value
- J Estimated value detected below Reporting Limit

Analytical Environmental Services, Inc

Date: 24-May-17

Client: Atlanta Environmental Mgmt	Client Sample ID: 0206-051017-DF-006-B
Project Name: DCSD - 0206	Collection Date: 5/10/2017 5:36:00 AM
Lab ID: 1705896-012	Matrix: Drinking Water

Analyses	Result	Reporting Limit	Qual	Units	BatchID	Dilution Factor	Date Analyzed	Analyst
Trace Elements by ICP/MS E200.8					(E200.2)			
Lead	BRL	1.00		ug/L	243012	1	05/23/2017 14:42	JR

Qualifiers:

- * Value exceeds maximum contaminant level
- BRL Below reporting limit
- H Holding times for preparation or analysis exceeded
- N Analyte not NELAC certified
- B Analyte detected in the associated method blank
- > Greater than Result value

- E Estimated (value above quantitation range)
- S Spike Recovery outside limits due to matrix
- Narr See case narrative
- NC Not confirmed
- < Less than Result value
- J Estimated value detected below Reporting Limit

Analytical Environmental Services, Inc

Date: 24-May-17

Client: Atlanta Environmental Mgmt	Client Sample ID: 0206-051017-DF-007-A
Project Name: DCSD - 0206	Collection Date: 5/10/2017 5:40:00 AM
Lab ID: 1705896-013	Matrix: Drinking Water

Analyses	Result	Reporting Limit	Qual	Units	BatchID	Dilution Factor	Date Analyzed	Analyst
Trace Elements by ICP/MS E200.8					(E200.2)			
Lead	BRL	1.00		ug/L	243012	1	05/23/2017 14:46	JR

Qualifiers:

- * Value exceeds maximum contaminant level
- BRL Below reporting limit
- H Holding times for preparation or analysis exceeded
- N Analyte not NELAC certified
- B Analyte detected in the associated method blank
- > Greater than Result value

- E Estimated (value above quantitation range)
- S Spike Recovery outside limits due to matrix
- Narr See case narrative
- NC Not confirmed
- < Less than Result value
- J Estimated value detected below Reporting Limit

Analytical Environmental Services, Inc

Date: 24-May-17

Client: Atlanta Environmental Mgmt	Client Sample ID: 0206-051017-DF-007-B
Project Name: DCSD - 0206	Collection Date: 5/10/2017 5:41:00 AM
Lab ID: 1705896-014	Matrix: Drinking Water

Analyses	Result	Reporting Limit	Qual	Units	BatchID	Dilution Factor	Date Analyzed	Analyst
Trace Elements by ICP/MS E200.8								
				(E200.2)				
Lead	BRL	1.00		ug/L	243012	1	05/23/2017 14:49	JR

Qualifiers:

- * Value exceeds maximum contaminant level
- BRL Below reporting limit
- H Holding times for preparation or analysis exceeded
- N Analyte not NELAC certified
- B Analyte detected in the associated method blank
- > Greater than Result value

- E Estimated (value above quantitation range)
- S Spike Recovery outside limits due to matrix
- Narr See case narrative
- NC Not confirmed
- < Less than Result value
- J Estimated value detected below Reporting Limit

Analytical Environmental Services, Inc

Date: 24-May-17

Client: Atlanta Environmental Mgmt	Client Sample ID: 0206-051017-DF-008-A
Project Name: DCSD - 0206	Collection Date: 5/10/2017 5:42:00 AM
Lab ID: 1705896-015	Matrix: Drinking Water

Analyses	Result	Reporting Limit	Qual	Units	BatchID	Dilution Factor	Date Analyzed	Analyst
Trace Elements by ICP/MS E200.8					(E200.2)			
Lead	BRL	1.00		ug/L	243012	1	05/23/2017 14:53	JR

Qualifiers:

- * Value exceeds maximum contaminant level
- BRL Below reporting limit
- H Holding times for preparation or analysis exceeded
- N Analyte not NELAC certified
- B Analyte detected in the associated method blank
- > Greater than Result value

- E Estimated (value above quantitation range)
- S Spike Recovery outside limits due to matrix
- Narr See case narrative
- NC Not confirmed
- < Less than Result value
- J Estimated value detected below Reporting Limit

Analytical Environmental Services, Inc

Date: 24-May-17

Client: Atlanta Environmental Mgmt	Client Sample ID: 0206-051017-DF-008-B
Project Name: DCSD - 0206	Collection Date: 5/10/2017 5:43:00 AM
Lab ID: 1705896-016	Matrix: Drinking Water

Analyses	Result	Reporting Limit	Qual	Units	BatchID	Dilution Factor	Date Analyzed	Analyst
Trace Elements by ICP/MS E200.8					(E200.2)			
Lead	BRL	1.00		ug/L	243012	1	05/23/2017 15:03	JR

Qualifiers:

- * Value exceeds maximum contaminant level
- BRL Below reporting limit
- H Holding times for preparation or analysis exceeded
- N Analyte not NELAC certified
- B Analyte detected in the associated method blank
- > Greater than Result value

- E Estimated (value above quantitation range)
- S Spike Recovery outside limits due to matrix
- Narr See case narrative
- NC Not confirmed
- < Less than Result value
- J Estimated value detected below Reporting Limit

Analytical Environmental Services, Inc

Date: 24-May-17

Client: Atlanta Environmental Mgmt	Client Sample ID: 0206-051017-DF-009-A
Project Name: DCSD - 0206	Collection Date: 5/10/2017 5:20:00 AM
Lab ID: 1705896-017	Matrix: Drinking Water

Analyses	Result	Reporting Limit	Qual	Units	BatchID	Dilution Factor	Date Analyzed	Analyst
Trace Elements by ICP/MS E200.8					(E200.2)			
Lead	BRL	1.00		ug/L	243012	1	05/23/2017 15:07	JR

Qualifiers:

- * Value exceeds maximum contaminant level
- BRL Below reporting limit
- H Holding times for preparation or analysis exceeded
- N Analyte not NELAC certified
- B Analyte detected in the associated method blank
- > Greater than Result value

- E Estimated (value above quantitation range)
- S Spike Recovery outside limits due to matrix
- Narr See case narrative
- NC Not confirmed
- < Less than Result value
- J Estimated value detected below Reporting Limit

Analytical Environmental Services, Inc

Date: 24-May-17

Client: Atlanta Environmental Mgmt	Client Sample ID: 0206-051017-DF-009-B
Project Name: DCSD - 0206	Collection Date: 5/10/2017 5:21:00 AM
Lab ID: 1705896-018	Matrix: Drinking Water

Analyses	Result	Reporting Limit	Qual	Units	BatchID	Dilution Factor	Date Analyzed	Analyst
Trace Elements by ICP/MS E200.8					(E200.2)			
Lead	BRL	1.00		ug/L	243012	1	05/23/2017 15:11	JR

Qualifiers:

- * Value exceeds maximum contaminant level
- BRL Below reporting limit
- H Holding times for preparation or analysis exceeded
- N Analyte not NELAC certified
- B Analyte detected in the associated method blank
- > Greater than Result value

- E Estimated (value above quantitation range)
- S Spike Recovery outside limits due to matrix
- Narr See case narrative
- NC Not confirmed
- < Less than Result value
- J Estimated value detected below Reporting Limit

Analytical Environmental Services, Inc

Date: 24-May-17

Client: Atlanta Environmental Mgmt	Client Sample ID: 0206-051017-DF-010-A
Project Name: DCSD - 0206	Collection Date: 5/10/2017 5:22:00 AM
Lab ID: 1705896-019	Matrix: Drinking Water

Analyses	Result	Reporting Limit	Qual	Units	BatchID	Dilution Factor	Date Analyzed	Analyst
Trace Elements by ICP/MS E200.8					(E200.2)			
Lead	BRL	1.00		ug/L	243012	1	05/23/2017 15:14	JR

Qualifiers:

- * Value exceeds maximum contaminant level
- BRL Below reporting limit
- H Holding times for preparation or analysis exceeded
- N Analyte not NELAC certified
- B Analyte detected in the associated method blank
- > Greater than Result value

- E Estimated (value above quantitation range)
- S Spike Recovery outside limits due to matrix
- Narr See case narrative
- NC Not confirmed
- < Less than Result value
- J Estimated value detected below Reporting Limit

Analytical Environmental Services, Inc

Date: 24-May-17

Client: Atlanta Environmental Mgmt	Client Sample ID: 0206-051017-DF-010-B
Project Name: DCSD - 0206	Collection Date: 5/10/2017 5:23:00 AM
Lab ID: 1705896-020	Matrix: Drinking Water

Analyses	Result	Reporting Limit	Qual	Units	BatchID	Dilution Factor	Date Analyzed	Analyst
Trace Elements by ICP/MS E200.8					(E200.2)			
Lead	BRL	1.00		ug/L	243012	1	05/23/2017 15:18	JR

Qualifiers:

- * Value exceeds maximum contaminant level
- BRL Below reporting limit
- H Holding times for preparation or analysis exceeded
- N Analyte not NELAC certified
- B Analyte detected in the associated method blank
- > Greater than Result value

- E Estimated (value above quantitation range)
- S Spike Recovery outside limits due to matrix
- Narr See case narrative
- NC Not confirmed
- < Less than Result value
- J Estimated value detected below Reporting Limit

Analytical Environmental Services, Inc

Date: 24-May-17

Client: Atlanta Environmental Mgmt	Client Sample ID: 0206-051017-DF-011-A
Project Name: DCSD - 0206	Collection Date: 5/10/2017 5:47:00 AM
Lab ID: 1705896-021	Matrix: Drinking Water

Analyses	Result	Reporting Limit	Qual	Units	BatchID	Dilution Factor	Date Analyzed	Analyst
Trace Elements by ICP/MS E200.8								
				(E200.2)				
Lead	BRL	1.00		ug/L	243014	1	05/23/2017 15:28	JR

Qualifiers:

- * Value exceeds maximum contaminant level
- BRL Below reporting limit
- H Holding times for preparation or analysis exceeded
- N Analyte not NELAC certified
- B Analyte detected in the associated method blank
- > Greater than Result value

- E Estimated (value above quantitation range)
- S Spike Recovery outside limits due to matrix
- Narr See case narrative
- NC Not confirmed
- < Less than Result value
- J Estimated value detected below Reporting Limit

Analytical Environmental Services, Inc

Date: 24-May-17

Client: Atlanta Environmental Mgmt	Client Sample ID: 0206-051017-DF-011-B
Project Name: DCSD - 0206	Collection Date: 5/10/2017 5:48:00 AM
Lab ID: 1705896-022	Matrix: Drinking Water

Analyses	Result	Reporting Limit	Qual	Units	BatchID	Dilution Factor	Date Analyzed	Analyst
Trace Elements by ICP/MS E200.8								
				(E200.2)				
Lead	BRL	1.00		ug/L	243014	1	05/23/2017 15:53	JR

Qualifiers:

- * Value exceeds maximum contaminant level
- BRL Below reporting limit
- H Holding times for preparation or analysis exceeded
- N Analyte not NELAC certified
- B Analyte detected in the associated method blank
- > Greater than Result value

- E Estimated (value above quantitation range)
- S Spike Recovery outside limits due to matrix
- Narr See case narrative
- NC Not confirmed
- < Less than Result value
- J Estimated value detected below Reporting Limit

Analytical Environmental Services, Inc

Date: 24-May-17

Client: Atlanta Environmental Mgmt	Client Sample ID: 0206-051017-DF-012-A
Project Name: DCSD - 0206	Collection Date: 5/10/2017 5:49:00 AM
Lab ID: 1705896-023	Matrix: Drinking Water

Analyses	Result	Reporting Limit	Qual	Units	BatchID	Dilution Factor	Date Analyzed	Analyst
Trace Elements by ICP/MS E200.8								
				(E200.2)				
Lead	BRL	1.00		ug/L	243014	1	05/23/2017 15:56	JR

Qualifiers:

- * Value exceeds maximum contaminant level
- BRL Below reporting limit
- H Holding times for preparation or analysis exceeded
- N Analyte not NELAC certified
- B Analyte detected in the associated method blank
- > Greater than Result value

- E Estimated (value above quantitation range)
- S Spike Recovery outside limits due to matrix
- Narr See case narrative
- NC Not confirmed
- < Less than Result value
- J Estimated value detected below Reporting Limit

Analytical Environmental Services, Inc

Date: 24-May-17

Client: Atlanta Environmental Mgmt	Client Sample ID: 0206-051017-DF-012-B
Project Name: DCSD - 0206	Collection Date: 5/10/2017 5:50:00 AM
Lab ID: 1705896-024	Matrix: Drinking Water

Analyses	Result	Reporting Limit	Qual	Units	BatchID	Dilution Factor	Date Analyzed	Analyst
Trace Elements by ICP/MS E200.8								
				(E200.2)				
Lead	BRL	1.00		ug/L	243014	1	05/23/2017 15:59	JR

Qualifiers:

- * Value exceeds maximum contaminant level
- BRL Below reporting limit
- H Holding times for preparation or analysis exceeded
- N Analyte not NELAC certified
- B Analyte detected in the associated method blank
- > Greater than Result value

- E Estimated (value above quantitation range)
- S Spike Recovery outside limits due to matrix
- Narr See case narrative
- NC Not confirmed
- < Less than Result value
- J Estimated value detected below Reporting Limit

Analytical Environmental Services, Inc

Date: 24-May-17

Client: Atlanta Environmental Mgmt	Client Sample ID: 0206-051017-DF-013-A
Project Name: DCSD - 0206	Collection Date: 5/10/2017 5:08:00 AM
Lab ID: 1705896-025	Matrix: Drinking Water

Analyses	Result	Reporting Limit	Qual	Units	BatchID	Dilution Factor	Date Analyzed	Analyst
Trace Elements by ICP/MS E200.8					(E200.2)			
Lead	BRL	1.00		ug/L	243014	1	05/23/2017 16:03	JR

Qualifiers:

- * Value exceeds maximum contaminant level
- BRL Below reporting limit
- H Holding times for preparation or analysis exceeded
- N Analyte not NELAC certified
- B Analyte detected in the associated method blank
- > Greater than Result value

- E Estimated (value above quantitation range)
- S Spike Recovery outside limits due to matrix
- Narr See case narrative
- NC Not confirmed
- < Less than Result value
- J Estimated value detected below Reporting Limit

Analytical Environmental Services, Inc

Date: 24-May-17

Client: Atlanta Environmental Mgmt	Client Sample ID: 0206-051017-DF-013-B
Project Name: DCSD - 0206	Collection Date: 5/10/2017 5:09:00 AM
Lab ID: 1705896-026	Matrix: Drinking Water

Analyses	Result	Reporting Limit	Qual	Units	BatchID	Dilution Factor	Date Analyzed	Analyst
Trace Elements by ICP/MS E200.8					(E200.2)			
Lead	BRL	1.00		ug/L	243014	1	05/23/2017 16:06	JR

Qualifiers:

- * Value exceeds maximum contaminant level
- BRL Below reporting limit
- H Holding times for preparation or analysis exceeded
- N Analyte not NELAC certified
- B Analyte detected in the associated method blank
- > Greater than Result value

- E Estimated (value above quantitation range)
- S Spike Recovery outside limits due to matrix
- Narr See case narrative
- NC Not confirmed
- < Less than Result value
- J Estimated value detected below Reporting Limit

Analytical Environmental Services, Inc

Date: 24-May-17

Client: Atlanta Environmental Mgmt	Client Sample ID: 0206-051017-DF-014-A
Project Name: DCSD - 0206	Collection Date: 5/10/2017 5:10:00 AM
Lab ID: 1705896-027	Matrix: Drinking Water

Analyses	Result	Reporting Limit	Qual	Units	BatchID	Dilution Factor	Date Analyzed	Analyst
Trace Elements by ICP/MS E200.8					(E200.2)			
Lead	BRL	1.00		ug/L	243014	1	05/23/2017 16:10	JR

Qualifiers:

- * Value exceeds maximum contaminant level
- BRL Below reporting limit
- H Holding times for preparation or analysis exceeded
- N Analyte not NELAC certified
- B Analyte detected in the associated method blank
- > Greater than Result value

- E Estimated (value above quantitation range)
- S Spike Recovery outside limits due to matrix
- Narr See case narrative
- NC Not confirmed
- < Less than Result value
- J Estimated value detected below Reporting Limit

Analytical Environmental Services, Inc

Date: 24-May-17

Client: Atlanta Environmental Mgmt	Client Sample ID: 0206-051017-DF-014-B
Project Name: DCSD - 0206	Collection Date: 5/10/2017 5:11:00 AM
Lab ID: 1705896-028	Matrix: Drinking Water

Analyses	Result	Reporting Limit	Qual	Units	BatchID	Dilution Factor	Date Analyzed	Analyst
Trace Elements by ICP/MS E200.8								
				(E200.2)				
Lead	BRL	1.00		ug/L	243014	1	05/23/2017 16:13	JR

Qualifiers:

- * Value exceeds maximum contaminant level
- BRL Below reporting limit
- H Holding times for preparation or analysis exceeded
- N Analyte not NELAC certified
- B Analyte detected in the associated method blank
- > Greater than Result value

- E Estimated (value above quantitation range)
- S Spike Recovery outside limits due to matrix
- Narr See case narrative
- NC Not confirmed
- < Less than Result value
- J Estimated value detected below Reporting Limit

Analytical Environmental Services, Inc

Date: 24-May-17

Client: Atlanta Environmental Mgmt	Client Sample ID: 0206-051017-DF-015-A
Project Name: DCSD - 0206	Collection Date: 5/10/2017 5:15:00 AM
Lab ID: 1705896-029	Matrix: Drinking Water

Analyses	Result	Reporting Limit	Qual	Units	BatchID	Dilution Factor	Date Analyzed	Analyst
Trace Elements by ICP/MS E200.8					(E200.2)			
Lead	1.06	1.00		ug/L	243014	1	05/23/2017 16:17	JR

Qualifiers:

- * Value exceeds maximum contaminant level
- BRL Below reporting limit
- H Holding times for preparation or analysis exceeded
- N Analyte not NELAC certified
- B Analyte detected in the associated method blank
- > Greater than Result value

- E Estimated (value above quantitation range)
- S Spike Recovery outside limits due to matrix
- Narr See case narrative
- NC Not confirmed
- < Less than Result value
- J Estimated value detected below Reporting Limit

Analytical Environmental Services, Inc

Date: 24-May-17

Client: Atlanta Environmental Mgmt	Client Sample ID: 0206-051017-DF-015-B
Project Name: DCSD - 0206	Collection Date: 5/10/2017 5:16:00 AM
Lab ID: 1705896-030	Matrix: Drinking Water

Analyses	Result	Reporting Limit	Qual	Units	BatchID	Dilution Factor	Date Analyzed	Analyst
Trace Elements by ICP/MS E200.8					(E200.2)			
Lead	BRL	1.00		ug/L	243014	1	05/23/2017 16:27	JR

Qualifiers:

- * Value exceeds maximum contaminant level
- BRL Below reporting limit
- H Holding times for preparation or analysis exceeded
- N Analyte not NELAC certified
- B Analyte detected in the associated method blank
- > Greater than Result value

- E Estimated (value above quantitation range)
- S Spike Recovery outside limits due to matrix
- Narr See case narrative
- NC Not confirmed
- < Less than Result value
- J Estimated value detected below Reporting Limit

Analytical Environmental Services, Inc

Date: 24-May-17

Client: Atlanta Environmental Mgmt	Client Sample ID: 0206-051017-DF-016-A
Project Name: DCSD - 0206	Collection Date: 5/10/2017 5:17:00 AM
Lab ID: 1705896-031	Matrix: Drinking Water

Analyses	Result	Reporting Limit	Qual	Units	BatchID	Dilution Factor	Date Analyzed	Analyst
Trace Elements by ICP/MS E200.8								
				(E200.2)				
Lead	1.19	1.00		ug/L	243014	1	05/23/2017 15:46	JR

Qualifiers:

- * Value exceeds maximum contaminant level
- BRL Below reporting limit
- H Holding times for preparation or analysis exceeded
- N Analyte not NELAC certified
- B Analyte detected in the associated method blank
- > Greater than Result value

- E Estimated (value above quantitation range)
- S Spike Recovery outside limits due to matrix
- Narr See case narrative
- NC Not confirmed
- < Less than Result value
- J Estimated value detected below Reporting Limit

Analytical Environmental Services, Inc

Date: 24-May-17

Client: Atlanta Environmental Mgmt	Client Sample ID: 0206-051017-DF-016-B
Project Name: DCSD - 0206	Collection Date: 5/10/2017 5:18:00 AM
Lab ID: 1705896-032	Matrix: Drinking Water

Analyses	Result	Reporting Limit	Qual	Units	BatchID	Dilution Factor	Date Analyzed	Analyst
Trace Elements by ICP/MS E200.8								
				(E200.2)				
Lead	BRL	1.00		ug/L	243014	1	05/23/2017 16:31	JR

Qualifiers:

- * Value exceeds maximum contaminant level
- BRL Below reporting limit
- H Holding times for preparation or analysis exceeded
- N Analyte not NELAC certified
- B Analyte detected in the associated method blank
- > Greater than Result value

- E Estimated (value above quantitation range)
- S Spike Recovery outside limits due to matrix
- Narr See case narrative
- NC Not confirmed
- < Less than Result value
- J Estimated value detected below Reporting Limit

Analytical Environmental Services, Inc

Date: 24-May-17

Client: Atlanta Environmental Mgmt	Client Sample ID: 0206-051017-DF-017-A
Project Name: DCSD - 0206	Collection Date: 5/10/2017 5:22:00 AM
Lab ID: 1705896-033	Matrix: Drinking Water

Analyses	Result	Reporting Limit	Qual	Units	BatchID	Dilution Factor	Date Analyzed	Analyst
Trace Elements by ICP/MS E200.8								
				(E200.2)				
Lead	BRL	1.00		ug/L	243014	1	05/23/2017 16:52	JR

Qualifiers:

- * Value exceeds maximum contaminant level
- BRL Below reporting limit
- H Holding times for preparation or analysis exceeded
- N Analyte not NELAC certified
- B Analyte detected in the associated method blank
- > Greater than Result value

- E Estimated (value above quantitation range)
- S Spike Recovery outside limits due to matrix
- Narr See case narrative
- NC Not confirmed
- < Less than Result value
- J Estimated value detected below Reporting Limit

Analytical Environmental Services, Inc

Date: 24-May-17

Client: Atlanta Environmental Mgmt	Client Sample ID: 0206-051017-DF-017-B
Project Name: DCSD - 0206	Collection Date: 5/10/2017 5:23:00 AM
Lab ID: 1705896-034	Matrix: Drinking Water

Analyses	Result	Reporting Limit	Qual	Units	BatchID	Dilution Factor	Date Analyzed	Analyst
Trace Elements by ICP/MS E200.8					(E200.2)			
Lead	BRL	1.00		ug/L	243014	1	05/23/2017 16:55	JR

Qualifiers:

- * Value exceeds maximum contaminant level
- BRL Below reporting limit
- H Holding times for preparation or analysis exceeded
- N Analyte not NELAC certified
- B Analyte detected in the associated method blank
- > Greater than Result value

- E Estimated (value above quantitation range)
- S Spike Recovery outside limits due to matrix
- Narr See case narrative
- NC Not confirmed
- < Less than Result value
- J Estimated value detected below Reporting Limit

Analytical Environmental Services, Inc

Date: 24-May-17

Client: Atlanta Environmental Mgmt	Client Sample ID: 0206-051017-DF-018-A
Project Name: DCSD - 0206	Collection Date: 5/10/2017 5:24:00 AM
Lab ID: 1705896-035	Matrix: Drinking Water

Analyses	Result	Reporting Limit	Qual	Units	BatchID	Dilution Factor	Date Analyzed	Analyst
Trace Elements by ICP/MS E200.8					(E200.2)			
Lead	BRL	1.00		ug/L	243014	1	05/23/2017 16:59	JR

Qualifiers:

- * Value exceeds maximum contaminant level
- BRL Below reporting limit
- H Holding times for preparation or analysis exceeded
- N Analyte not NELAC certified
- B Analyte detected in the associated method blank
- > Greater than Result value

- E Estimated (value above quantitation range)
- S Spike Recovery outside limits due to matrix
- Narr See case narrative
- NC Not confirmed
- < Less than Result value
- J Estimated value detected below Reporting Limit

Analytical Environmental Services, Inc

Date: 24-May-17

Client: Atlanta Environmental Mgmt	Client Sample ID: 0206-051017-DF-018-B
Project Name: DCSD - 0206	Collection Date: 5/10/2017 5:25:00 AM
Lab ID: 1705896-036	Matrix: Drinking Water

Analyses	Result	Reporting Limit	Qual	Units	BatchID	Dilution Factor	Date Analyzed	Analyst
Trace Elements by ICP/MS E200.8					(E200.2)			
Lead	BRL	1.00		ug/L	243014	1	05/23/2017 17:51	JR

Qualifiers:

- * Value exceeds maximum contaminant level
- BRL Below reporting limit
- H Holding times for preparation or analysis exceeded
- N Analyte not NELAC certified
- B Analyte detected in the associated method blank
- > Greater than Result value

- E Estimated (value above quantitation range)
- S Spike Recovery outside limits due to matrix
- Narr See case narrative
- NC Not confirmed
- < Less than Result value
- J Estimated value detected below Reporting Limit

Analytical Environmental Services, Inc

Date: 24-May-17

Client: Atlanta Environmental Mgmt	Client Sample ID: 0206-051017-DF-019-A
Project Name: DCSD - 0206	Collection Date: 5/10/2017 5:31:00 AM
Lab ID: 1705896-037	Matrix: Drinking Water

Analyses	Result	Reporting Limit	Qual	Units	BatchID	Dilution Factor	Date Analyzed	Analyst
Trace Elements by ICP/MS E200.8								
				(E200.2)				
Lead	BRL	1.00		ug/L	243014	1	05/23/2017 17:54	JR

Qualifiers:

- * Value exceeds maximum contaminant level
- BRL Below reporting limit
- H Holding times for preparation or analysis exceeded
- N Analyte not NELAC certified
- B Analyte detected in the associated method blank
- > Greater than Result value

- E Estimated (value above quantitation range)
- S Spike Recovery outside limits due to matrix
- Narr See case narrative
- NC Not confirmed
- < Less than Result value
- J Estimated value detected below Reporting Limit

Analytical Environmental Services, Inc

Date: 24-May-17

Client: Atlanta Environmental Mgmt	Client Sample ID: 0206-051017-DF-019-B
Project Name: DCSD - 0206	Collection Date: 5/10/2017 5:32:00 AM
Lab ID: 1705896-038	Matrix: Drinking Water

Analyses	Result	Reporting Limit	Qual	Units	BatchID	Dilution Factor	Date Analyzed	Analyst
Trace Elements by ICP/MS E200.8					(E200.2)			
Lead	BRL	1.00		ug/L	243014	1	05/23/2017 18:36	JR

Qualifiers:

- * Value exceeds maximum contaminant level
- BRL Below reporting limit
- H Holding times for preparation or analysis exceeded
- N Analyte not NELAC certified
- B Analyte detected in the associated method blank
- > Greater than Result value

- E Estimated (value above quantitation range)
- S Spike Recovery outside limits due to matrix
- Narr See case narrative
- NC Not confirmed
- < Less than Result value
- J Estimated value detected below Reporting Limit

Analytical Environmental Services, Inc

Date: 24-May-17

Client: Atlanta Environmental Mgmt	Client Sample ID: 0206-051017-DF-020-A
Project Name: DCSD - 0206	Collection Date: 5/10/2017 5:33:00 AM
Lab ID: 1705896-039	Matrix: Drinking Water

Analyses	Result	Reporting Limit	Qual	Units	BatchID	Dilution Factor	Date Analyzed	Analyst
Trace Elements by ICP/MS E200.8								
				(E200.2)				
Lead	BRL	1.00		ug/L	243014	1	05/23/2017 18:40	JR

Qualifiers:

- * Value exceeds maximum contaminant level
- BRL Below reporting limit
- H Holding times for preparation or analysis exceeded
- N Analyte not NELAC certified
- B Analyte detected in the associated method blank
- > Greater than Result value

- E Estimated (value above quantitation range)
- S Spike Recovery outside limits due to matrix
- Narr See case narrative
- NC Not confirmed
- < Less than Result value
- J Estimated value detected below Reporting Limit

Analytical Environmental Services, Inc

Date: 24-May-17

Client: Atlanta Environmental Mgmt	Client Sample ID: 0206-051017-DF-020-B
Project Name: DCSD - 0206	Collection Date: 5/10/2017 5:34:00 AM
Lab ID: 1705896-040	Matrix: Drinking Water

Analyses	Result	Reporting Limit	Qual	Units	BatchID	Dilution Factor	Date Analyzed	Analyst
Trace Elements by ICP/MS E200.8					(E200.2)			
Lead	BRL	1.00		ug/L	243014	1	05/23/2017 18:43	JR

Qualifiers:

- * Value exceeds maximum contaminant level
- BRL Below reporting limit
- H Holding times for preparation or analysis exceeded
- N Analyte not NELAC certified
- B Analyte detected in the associated method blank
- > Greater than Result value

- E Estimated (value above quantitation range)
- S Spike Recovery outside limits due to matrix
- Narr See case narrative
- NC Not confirmed
- < Less than Result value
- J Estimated value detected below Reporting Limit

Analytical Environmental Services, Inc

Date: 24-May-17

Client: Atlanta Environmental Mgmt	Client Sample ID: 0206-051017-DF-021-A
Project Name: DCSD - 0206	Collection Date: 5/10/2017 5:35:00 AM
Lab ID: 1705896-041	Matrix: Drinking Water

Analyses	Result	Reporting Limit	Qual	Units	BatchID	Dilution Factor	Date Analyzed	Analyst
Trace Elements by ICP/MS E200.8					(E200.2)			
Lead	BRL	1.00		ug/L	243015	1	05/23/2017 21:34	JR

Qualifiers:

- * Value exceeds maximum contaminant level
- BRL Below reporting limit
- H Holding times for preparation or analysis exceeded
- N Analyte not NELAC certified
- B Analyte detected in the associated method blank
- > Greater than Result value

- E Estimated (value above quantitation range)
- S Spike Recovery outside limits due to matrix
- Narr See case narrative
- NC Not confirmed
- < Less than Result value
- J Estimated value detected below Reporting Limit

Analytical Environmental Services, Inc

Date: 24-May-17

Client: Atlanta Environmental Mgmt	Client Sample ID: 0206-051017-DF-021-B
Project Name: DCSD - 0206	Collection Date: 5/10/2017 5:36:00 AM
Lab ID: 1705896-042	Matrix: Drinking Water

Analyses	Result	Reporting Limit	Qual	Units	BatchID	Dilution Factor	Date Analyzed	Analyst
Trace Elements by ICP/MS E200.8					(E200.2)			
Lead	BRL	1.00		ug/L	243015	1	05/23/2017 21:51	JR

Qualifiers:

- * Value exceeds maximum contaminant level
- BRL Below reporting limit
- H Holding times for preparation or analysis exceeded
- N Analyte not NELAC certified
- B Analyte detected in the associated method blank
- > Greater than Result value

- E Estimated (value above quantitation range)
- S Spike Recovery outside limits due to matrix
- Narr See case narrative
- NC Not confirmed
- < Less than Result value
- J Estimated value detected below Reporting Limit

Analytical Environmental Services, Inc

Date: 24-May-17

Client: Atlanta Environmental Mgmt	Client Sample ID: 0206-051017-DF-022-A
Project Name: DCSD - 0206	Collection Date: 5/10/2017 5:37:00 AM
Lab ID: 1705896-043	Matrix: Drinking Water

Analyses	Result	Reporting Limit	Qual	Units	BatchID	Dilution Factor	Date Analyzed	Analyst
Trace Elements by ICP/MS E200.8					(E200.2)			
Lead	BRL	1.00		ug/L	243015	1	05/23/2017 21:54	JR

Qualifiers:

- * Value exceeds maximum contaminant level
- BRL Below reporting limit
- H Holding times for preparation or analysis exceeded
- N Analyte not NELAC certified
- B Analyte detected in the associated method blank
- > Greater than Result value

- E Estimated (value above quantitation range)
- S Spike Recovery outside limits due to matrix
- Narr See case narrative
- NC Not confirmed
- < Less than Result value
- J Estimated value detected below Reporting Limit

Analytical Environmental Services, Inc

Date: 24-May-17

Client: Atlanta Environmental Mgmt	Client Sample ID: 0206-051017-DF-022-B
Project Name: DCSD - 0206	Collection Date: 5/10/2017 5:38:00 AM
Lab ID: 1705896-044	Matrix: Drinking Water

Analyses	Result	Reporting Limit	Qual	Units	BatchID	Dilution Factor	Date Analyzed	Analyst
Trace Elements by ICP/MS E200.8					(E200.2)			
Lead	BRL	1.00		ug/L	243015	1	05/23/2017 22:05	JR

Qualifiers:

- * Value exceeds maximum contaminant level
- BRL Below reporting limit
- H Holding times for preparation or analysis exceeded
- N Analyte not NELAC certified
- B Analyte detected in the associated method blank
- > Greater than Result value

- E Estimated (value above quantitation range)
- S Spike Recovery outside limits due to matrix
- Narr See case narrative
- NC Not confirmed
- < Less than Result value
- J Estimated value detected below Reporting Limit

Analytical Environmental Services, Inc

Date: 24-May-17

Client: Atlanta Environmental Mgmt	Client Sample ID: 0206-051017-DF-023-A
Project Name: DCSD - 0206	Collection Date: 5/10/2017 5:53:00 AM
Lab ID: 1705896-045	Matrix: Drinking Water

Analyses	Result	Reporting Limit	Qual	Units	BatchID	Dilution Factor	Date Analyzed	Analyst
Trace Elements by ICP/MS E200.8					(E200.2)			
Lead	BRL	1.00		ug/L	243015	1	05/23/2017 22:08	JR

Qualifiers:

- * Value exceeds maximum contaminant level
- BRL Below reporting limit
- H Holding times for preparation or analysis exceeded
- N Analyte not NELAC certified
- B Analyte detected in the associated method blank
- > Greater than Result value

- E Estimated (value above quantitation range)
- S Spike Recovery outside limits due to matrix
- Narr See case narrative
- NC Not confirmed
- < Less than Result value
- J Estimated value detected below Reporting Limit

Analytical Environmental Services, Inc

Date: 24-May-17

Client: Atlanta Environmental Mgmt	Client Sample ID: 0206-051017-DF-023-B
Project Name: DCSD - 0206	Collection Date: 5/10/2017 5:54:00 AM
Lab ID: 1705896-046	Matrix: Drinking Water

Analyses	Result	Reporting Limit	Qual	Units	BatchID	Dilution Factor	Date Analyzed	Analyst
Trace Elements by ICP/MS E200.8					(E200.2)			
Lead	BRL	1.00		ug/L	243015	1	05/23/2017 22:12	JR

Qualifiers:

- * Value exceeds maximum contaminant level
- BRL Below reporting limit
- H Holding times for preparation or analysis exceeded
- N Analyte not NELAC certified
- B Analyte detected in the associated method blank
- > Greater than Result value

- E Estimated (value above quantitation range)
- S Spike Recovery outside limits due to matrix
- Narr See case narrative
- NC Not confirmed
- < Less than Result value
- J Estimated value detected below Reporting Limit

Analytical Environmental Services, Inc

Date: 24-May-17

Client: Atlanta Environmental Mgmt	Client Sample ID: 0206-051017-DF-024-A
Project Name: DCSD - 0206	Collection Date: 5/10/2017 5:56:00 AM
Lab ID: 1705896-047	Matrix: Drinking Water

Analyses	Result	Reporting Limit	Qual	Units	BatchID	Dilution Factor	Date Analyzed	Analyst
Trace Elements by ICP/MS E200.8					(E200.2)			
Lead	BRL	1.00		ug/L	243015	1	05/23/2017 22:15	JR

Qualifiers:

- * Value exceeds maximum contaminant level
- BRL Below reporting limit
- H Holding times for preparation or analysis exceeded
- N Analyte not NELAC certified
- B Analyte detected in the associated method blank
- > Greater than Result value

- E Estimated (value above quantitation range)
- S Spike Recovery outside limits due to matrix
- Narr See case narrative
- NC Not confirmed
- < Less than Result value
- J Estimated value detected below Reporting Limit

Analytical Environmental Services, Inc

Date: 24-May-17

Client: Atlanta Environmental Mgmt	Client Sample ID: 0206-051017-DF-024-B
Project Name: DCSD - 0206	Collection Date: 5/10/2017 5:57:00 AM
Lab ID: 1705896-048	Matrix: Drinking Water

Analyses	Result	Reporting Limit	Qual	Units	BatchID	Dilution Factor	Date Analyzed	Analyst
Trace Elements by ICP/MS E200.8								
				(E200.2)				
Lead	BRL	1.00		ug/L	243015	1	05/23/2017 22:19	JR

Qualifiers:

- * Value exceeds maximum contaminant level
- BRL Below reporting limit
- H Holding times for preparation or analysis exceeded
- N Analyte not NELAC certified
- B Analyte detected in the associated method blank
- > Greater than Result value

- E Estimated (value above quantitation range)
- S Spike Recovery outside limits due to matrix
- Narr See case narrative
- NC Not confirmed
- < Less than Result value
- J Estimated value detected below Reporting Limit

Analytical Environmental Services, Inc

Date: 24-May-17

Client: Atlanta Environmental Mgmt	Client Sample ID: 0206-051017-DF-025-A
Project Name: DCSD - 0206	Collection Date: 5/10/2017 6:14:00 AM
Lab ID: 1705896-049	Matrix: Drinking Water

Analyses	Result	Reporting Limit	Qual	Units	BatchID	Dilution Factor	Date Analyzed	Analyst
Trace Elements by ICP/MS E200.8					(E200.2)			
Lead	BRL	1.00		ug/L	243015	1	05/23/2017 22:22	JR

Qualifiers:

- * Value exceeds maximum contaminant level
- BRL Below reporting limit
- H Holding times for preparation or analysis exceeded
- N Analyte not NELAC certified
- B Analyte detected in the associated method blank
- > Greater than Result value

- E Estimated (value above quantitation range)
- S Spike Recovery outside limits due to matrix
- Narr See case narrative
- NC Not confirmed
- < Less than Result value
- J Estimated value detected below Reporting Limit

Analytical Environmental Services, Inc

Date: 24-May-17

Client: Atlanta Environmental Mgmt	Client Sample ID: 0206-051017-DF-025-B
Project Name: DCSD - 0206	Collection Date: 5/10/2017 6:15:00 AM
Lab ID: 1705896-050	Matrix: Drinking Water

Analyses	Result	Reporting Limit	Qual	Units	BatchID	Dilution Factor	Date Analyzed	Analyst
Trace Elements by ICP/MS E200.8					(E200.2)			
Lead	BRL	1.00		ug/L	243015	1	05/23/2017 22:26	JR

Qualifiers:

- * Value exceeds maximum contaminant level
- BRL Below reporting limit
- H Holding times for preparation or analysis exceeded
- N Analyte not NELAC certified
- B Analyte detected in the associated method blank
- > Greater than Result value

- E Estimated (value above quantitation range)
- S Spike Recovery outside limits due to matrix
- Narr See case narrative
- NC Not confirmed
- < Less than Result value
- J Estimated value detected below Reporting Limit

Analytical Environmental Services, Inc

Date: 24-May-17

Client: Atlanta Environmental Mgmt	Client Sample ID: 0206-051017-DF-026-A
Project Name: DCSD - 0206	Collection Date: 5/10/2017 6:16:00 AM
Lab ID: 1705896-051	Matrix: Drinking Water

Analyses	Result	Reporting Limit	Qual	Units	BatchID	Dilution Factor	Date Analyzed	Analyst
Trace Elements by ICP/MS E200.8					(E200.2)			
Lead	BRL	1.00		ug/L	243015	1	05/23/2017 21:44	JR

Qualifiers:

- * Value exceeds maximum contaminant level
- BRL Below reporting limit
- H Holding times for preparation or analysis exceeded
- N Analyte not NELAC certified
- B Analyte detected in the associated method blank
- > Greater than Result value

- E Estimated (value above quantitation range)
- S Spike Recovery outside limits due to matrix
- Narr See case narrative
- NC Not confirmed
- < Less than Result value
- J Estimated value detected below Reporting Limit

Analytical Environmental Services, Inc

Date: 24-May-17

Client: Atlanta Environmental Mgmt	Client Sample ID: 0206-051017-DF-026-B
Project Name: DCSD - 0206	Collection Date: 5/10/2017 6:17:00 AM
Lab ID: 1705896-052	Matrix: Drinking Water

Analyses	Result	Reporting Limit	Qual	Units	BatchID	Dilution Factor	Date Analyzed	Analyst
Trace Elements by ICP/MS E200.8					(E200.2)			
Lead	BRL	1.00		ug/L	243015	1	05/23/2017 22:29	JR

Qualifiers:

- * Value exceeds maximum contaminant level
- BRL Below reporting limit
- H Holding times for preparation or analysis exceeded
- N Analyte not NELAC certified
- B Analyte detected in the associated method blank
- > Greater than Result value

- E Estimated (value above quantitation range)
- S Spike Recovery outside limits due to matrix
- Narr See case narrative
- NC Not confirmed
- < Less than Result value
- J Estimated value detected below Reporting Limit

Analytical Environmental Services, Inc

Date: 24-May-17

Client: Atlanta Environmental Mgmt	Client Sample ID: 0206-051017-DF-027-A
Project Name: DCSD - 0206	Collection Date: 5/10/2017 6:09:00 AM
Lab ID: 1705896-053	Matrix: Drinking Water

Analyses	Result	Reporting Limit	Qual	Units	BatchID	Dilution Factor	Date Analyzed	Analyst
Trace Elements by ICP/MS E200.8								
				(E200.2)				
Lead	BRL	1.00		ug/L	243015	1	05/23/2017 22:33	JR

Qualifiers:

- * Value exceeds maximum contaminant level
- BRL Below reporting limit
- H Holding times for preparation or analysis exceeded
- N Analyte not NELAC certified
- B Analyte detected in the associated method blank
- > Greater than Result value

- E Estimated (value above quantitation range)
- S Spike Recovery outside limits due to matrix
- Narr See case narrative
- NC Not confirmed
- < Less than Result value
- J Estimated value detected below Reporting Limit

Analytical Environmental Services, Inc

Date: 24-May-17

Client: Atlanta Environmental Mgmt	Client Sample ID: 0206-051017-DF-027-B
Project Name: DCSD - 0206	Collection Date: 5/10/2017 6:10:00 AM
Lab ID: 1705896-054	Matrix: Drinking Water

Analyses	Result	Reporting Limit	Qual	Units	BatchID	Dilution Factor	Date Analyzed	Analyst
Trace Elements by ICP/MS E200.8					(E200.2)			
Lead	BRL	1.00		ug/L	243015	1	05/23/2017 22:36	JR

Qualifiers:

- * Value exceeds maximum contaminant level
- BRL Below reporting limit
- H Holding times for preparation or analysis exceeded
- N Analyte not NELAC certified
- B Analyte detected in the associated method blank
- > Greater than Result value

- E Estimated (value above quantitation range)
- S Spike Recovery outside limits due to matrix
- Narr See case narrative
- NC Not confirmed
- < Less than Result value
- J Estimated value detected below Reporting Limit

Analytical Environmental Services, Inc

Date: 24-May-17

Client: Atlanta Environmental Mgmt	Client Sample ID: 0206-051017-DF-028-A
Project Name: DCSD - 0206	Collection Date: 5/10/2017 6:11:00 AM
Lab ID: 1705896-055	Matrix: Drinking Water

Analyses	Result	Reporting Limit	Qual	Units	BatchID	Dilution Factor	Date Analyzed	Analyst
Trace Elements by ICP/MS E200.8					(E200.2)			
Lead	BRL	1.00		ug/L	243015	1	05/23/2017 22:47	JR

Qualifiers:

- * Value exceeds maximum contaminant level
- BRL Below reporting limit
- H Holding times for preparation or analysis exceeded
- N Analyte not NELAC certified
- B Analyte detected in the associated method blank
- > Greater than Result value

- E Estimated (value above quantitation range)
- S Spike Recovery outside limits due to matrix
- Narr See case narrative
- NC Not confirmed
- < Less than Result value
- J Estimated value detected below Reporting Limit

Analytical Environmental Services, Inc

Date: 24-May-17

Client: Atlanta Environmental Mgmt	Client Sample ID: 0206-051017-DF-028-B
Project Name: DCSD - 0206	Collection Date: 5/10/2017 6:12:00 AM
Lab ID: 1705896-056	Matrix: Drinking Water

Analyses	Result	Reporting Limit	Qual	Units	BatchID	Dilution Factor	Date Analyzed	Analyst
Trace Elements by ICP/MS E200.8								
				(E200.2)				
Lead	BRL	1.00		ug/L	243015	1	05/23/2017 22:50	JR

Qualifiers:

- * Value exceeds maximum contaminant level
- BRL Below reporting limit
- H Holding times for preparation or analysis exceeded
- N Analyte not NELAC certified
- B Analyte detected in the associated method blank
- > Greater than Result value

- E Estimated (value above quantitation range)
- S Spike Recovery outside limits due to matrix
- Narr See case narrative
- NC Not confirmed
- < Less than Result value
- J Estimated value detected below Reporting Limit

Analytical Environmental Services, Inc

Date: 24-May-17

Client: Atlanta Environmental Mgmt	Client Sample ID: 0206-051017-DF-029-A
Project Name: DCSD - 0206	Collection Date: 5/10/2017 6:03:00 AM
Lab ID: 1705896-057	Matrix: Drinking Water

Analyses	Result	Reporting Limit	Qual	Units	BatchID	Dilution Factor	Date Analyzed	Analyst
Trace Elements by ICP/MS E200.8								
				(E200.2)				
Lead	BRL	1.00		ug/L	243015	1	05/23/2017 22:54	JR

Qualifiers:

- * Value exceeds maximum contaminant level
- BRL Below reporting limit
- H Holding times for preparation or analysis exceeded
- N Analyte not NELAC certified
- B Analyte detected in the associated method blank
- > Greater than Result value

- E Estimated (value above quantitation range)
- S Spike Recovery outside limits due to matrix
- Narr See case narrative
- NC Not confirmed
- < Less than Result value
- J Estimated value detected below Reporting Limit

Analytical Environmental Services, Inc

Date: 24-May-17

Client: Atlanta Environmental Mgmt	Client Sample ID: 0206-051017-DF-029-B
Project Name: DCSD - 0206	Collection Date: 5/10/2017 6:04:00 AM
Lab ID: 1705896-058	Matrix: Drinking Water

Analyses	Result	Reporting Limit	Qual	Units	BatchID	Dilution Factor	Date Analyzed	Analyst
Trace Elements by ICP/MS E200.8					(E200.2)			
Lead	BRL	1.00		ug/L	243015	1	05/23/2017 22:57	JR

Qualifiers:

- * Value exceeds maximum contaminant level
- BRL Below reporting limit
- H Holding times for preparation or analysis exceeded
- N Analyte not NELAC certified
- B Analyte detected in the associated method blank
- > Greater than Result value

- E Estimated (value above quantitation range)
- S Spike Recovery outside limits due to matrix
- Narr See case narrative
- NC Not confirmed
- < Less than Result value
- J Estimated value detected below Reporting Limit

Analytical Environmental Services, Inc

Date: 24-May-17

Client: Atlanta Environmental Mgmt	Client Sample ID: 0206-051017-DF-030-A
Project Name: DCSD - 0206	Collection Date: 5/10/2017 6:05:00 AM
Lab ID: 1705896-059	Matrix: Drinking Water

Analyses	Result	Reporting Limit	Qual	Units	BatchID	Dilution Factor	Date Analyzed	Analyst
Trace Elements by ICP/MS E200.8					(E200.2)			
Lead	BRL	1.00		ug/L	243015	1	05/23/2017 23:01	JR

Qualifiers:

- * Value exceeds maximum contaminant level
- BRL Below reporting limit
- H Holding times for preparation or analysis exceeded
- N Analyte not NELAC certified
- B Analyte detected in the associated method blank
- > Greater than Result value

- E Estimated (value above quantitation range)
- S Spike Recovery outside limits due to matrix
- Narr See case narrative
- NC Not confirmed
- < Less than Result value
- J Estimated value detected below Reporting Limit

Analytical Environmental Services, Inc

Date: 24-May-17

Client: Atlanta Environmental Mgmt	Client Sample ID: 0206-051017-DF-030-B
Project Name: DCSD - 0206	Collection Date: 5/10/2017 6:06:00 AM
Lab ID: 1705896-060	Matrix: Drinking Water

Analyses	Result	Reporting Limit	Qual	Units	BatchID	Dilution Factor	Date Analyzed	Analyst
Trace Elements by ICP/MS E200.8					(E200.2)			
Lead	BRL	1.00		ug/L	243015	1	05/23/2017 23:04	JR

Qualifiers:

- * Value exceeds maximum contaminant level
- BRL Below reporting limit
- H Holding times for preparation or analysis exceeded
- N Analyte not NELAC certified
- B Analyte detected in the associated method blank
- > Greater than Result value

- E Estimated (value above quantitation range)
- S Spike Recovery outside limits due to matrix
- Narr See case narrative
- NC Not confirmed
- < Less than Result value
- J Estimated value detected below Reporting Limit

Analytical Environmental Services, Inc

Date: 24-May-17

Client: Atlanta Environmental Mgmt	Client Sample ID: 0206-051017-DF-031-A
Project Name: DCSD - 0206	Collection Date: 5/10/2017 6:14:00 AM
Lab ID: 1705896-061	Matrix: Drinking Water

Analyses	Result	Reporting Limit	Qual	Units	BatchID	Dilution Factor	Date Analyzed	Analyst
Trace Elements by ICP/MS E200.8					(E200.2)			
Lead	BRL	1.00		ug/L	243017	1	05/23/2017 23:15	JR

Qualifiers:

- * Value exceeds maximum contaminant level
- BRL Below reporting limit
- H Holding times for preparation or analysis exceeded
- N Analyte not NELAC certified
- B Analyte detected in the associated method blank
- > Greater than Result value

- E Estimated (value above quantitation range)
- S Spike Recovery outside limits due to matrix
- Narr See case narrative
- NC Not confirmed
- < Less than Result value
- J Estimated value detected below Reporting Limit

Analytical Environmental Services, Inc

Date: 24-May-17

Client: Atlanta Environmental Mgmt	Client Sample ID: 0206-051017-DF-031-B
Project Name: DCSD - 0206	Collection Date: 5/10/2017 6:15:00 AM
Lab ID: 1705896-062	Matrix: Drinking Water

Analyses	Result	Reporting Limit	Qual	Units	BatchID	Dilution Factor	Date Analyzed	Analyst
Trace Elements by ICP/MS E200.8					(E200.2)			
Lead	BRL	1.00		ug/L	243017	1	05/23/2017 23:39	JR

Qualifiers:

- * Value exceeds maximum contaminant level
- BRL Below reporting limit
- H Holding times for preparation or analysis exceeded
- N Analyte not NELAC certified
- B Analyte detected in the associated method blank
- > Greater than Result value

- E Estimated (value above quantitation range)
- S Spike Recovery outside limits due to matrix
- Narr See case narrative
- NC Not confirmed
- < Less than Result value
- J Estimated value detected below Reporting Limit

Analytical Environmental Services, Inc

Date: 24-May-17

Client: Atlanta Environmental Mgmt	Client Sample ID: 0206-051017-DF-032-A
Project Name: DCSD - 0206	Collection Date: 5/10/2017 6:16:00 AM
Lab ID: 1705896-063	Matrix: Drinking Water

Analyses	Result	Reporting Limit	Qual	Units	BatchID	Dilution Factor	Date Analyzed	Analyst
Trace Elements by ICP/MS E200.8					(E200.2)			
Lead	BRL	1.00		ug/L	243017	1	05/23/2017 23:42	JR

Qualifiers:

- * Value exceeds maximum contaminant level
- BRL Below reporting limit
- H Holding times for preparation or analysis exceeded
- N Analyte not NELAC certified
- B Analyte detected in the associated method blank
- > Greater than Result value

- E Estimated (value above quantitation range)
- S Spike Recovery outside limits due to matrix
- Narr See case narrative
- NC Not confirmed
- < Less than Result value
- J Estimated value detected below Reporting Limit

Analytical Environmental Services, Inc

Date: 24-May-17

Client: Atlanta Environmental Mgmt	Client Sample ID: 0206-051017-DF-032-B
Project Name: DCSD - 0206	Collection Date: 5/10/2017 6:17:00 AM
Lab ID: 1705896-064	Matrix: Drinking Water

Analyses	Result	Reporting Limit	Qual	Units	BatchID	Dilution Factor	Date Analyzed	Analyst
Trace Elements by ICP/MS E200.8					(E200.2)			
Lead	BRL	1.00		ug/L	243017	1	05/23/2017 23:46	JR

Qualifiers:

- * Value exceeds maximum contaminant level
- BRL Below reporting limit
- H Holding times for preparation or analysis exceeded
- N Analyte not NELAC certified
- B Analyte detected in the associated method blank
- > Greater than Result value

- E Estimated (value above quantitation range)
- S Spike Recovery outside limits due to matrix
- Narr See case narrative
- NC Not confirmed
- < Less than Result value
- J Estimated value detected below Reporting Limit

Analytical Environmental Services, Inc

Date: 24-May-17

Client: Atlanta Environmental Mgmt	Client Sample ID: 0206-051017-DF-033-A
Project Name: DCSD - 0206	Collection Date: 5/10/2017 6:21:00 AM
Lab ID: 1705896-065	Matrix: Drinking Water

Analyses	Result	Reporting Limit	Qual	Units	BatchID	Dilution Factor	Date Analyzed	Analyst
Trace Elements by ICP/MS E200.8					(E200.2)			
Lead	BRL	1.00		ug/L	243017	1	05/23/2017 23:49	JR

Qualifiers:

- * Value exceeds maximum contaminant level
- BRL Below reporting limit
- H Holding times for preparation or analysis exceeded
- N Analyte not NELAC certified
- B Analyte detected in the associated method blank
- > Greater than Result value

- E Estimated (value above quantitation range)
- S Spike Recovery outside limits due to matrix
- Narr See case narrative
- NC Not confirmed
- < Less than Result value
- J Estimated value detected below Reporting Limit

Analytical Environmental Services, Inc

Date: 24-May-17

Client: Atlanta Environmental Mgmt	Client Sample ID: 0206-051017-DF-033-B
Project Name: DCSD - 0206	Collection Date: 5/10/2017 6:22:00 AM
Lab ID: 1705896-066	Matrix: Drinking Water

Analyses	Result	Reporting Limit	Qual	Units	BatchID	Dilution Factor	Date Analyzed	Analyst
Trace Elements by ICP/MS E200.8								
				(E200.2)				
Lead	BRL	1.00		ug/L	243017	1	05/23/2017 23:53	JR

Qualifiers:

- * Value exceeds maximum contaminant level
- BRL Below reporting limit
- H Holding times for preparation or analysis exceeded
- N Analyte not NELAC certified
- B Analyte detected in the associated method blank
- > Greater than Result value

- E Estimated (value above quantitation range)
- S Spike Recovery outside limits due to matrix
- Narr See case narrative
- NC Not confirmed
- < Less than Result value
- J Estimated value detected below Reporting Limit

Analytical Environmental Services, Inc

Date: 24-May-17

Client: Atlanta Environmental Mgmt	Client Sample ID: 0206-051017-DF-034-A
Project Name: DCSD - 0206	Collection Date: 5/10/2017 6:23:00 AM
Lab ID: 1705896-067	Matrix: Drinking Water

Analyses	Result	Reporting Limit	Qual	Units	BatchID	Dilution Factor	Date Analyzed	Analyst
Trace Elements by ICP/MS E200.8					(E200.2)			
Lead	BRL	1.00		ug/L	243017	1	05/23/2017 23:56	JR

Qualifiers:

- * Value exceeds maximum contaminant level
- BRL Below reporting limit
- H Holding times for preparation or analysis exceeded
- N Analyte not NELAC certified
- B Analyte detected in the associated method blank
- > Greater than Result value

- E Estimated (value above quantitation range)
- S Spike Recovery outside limits due to matrix
- Narr See case narrative
- NC Not confirmed
- < Less than Result value
- J Estimated value detected below Reporting Limit

Analytical Environmental Services, Inc

Date: 24-May-17

Client: Atlanta Environmental Mgmt	Client Sample ID: 0206-051017-DF-034-B
Project Name: DCSD - 0206	Collection Date: 5/10/2017 6:24:00 AM
Lab ID: 1705896-068	Matrix: Drinking Water

Analyses	Result	Reporting Limit	Qual	Units	BatchID	Dilution Factor	Date Analyzed	Analyst
Trace Elements by ICP/MS E200.8					(E200.2)			
Lead	BRL	1.00		ug/L	243017	1	05/24/2017 00:01	JR

Qualifiers:

- * Value exceeds maximum contaminant level
- BRL Below reporting limit
- H Holding times for preparation or analysis exceeded
- N Analyte not NELAC certified
- B Analyte detected in the associated method blank
- > Greater than Result value

- E Estimated (value above quantitation range)
- S Spike Recovery outside limits due to matrix
- Narr See case narrative
- NC Not confirmed
- < Less than Result value
- J Estimated value detected below Reporting Limit

Analytical Environmental Services, Inc

Date: 24-May-17

Client: Atlanta Environmental Mgmt	Client Sample ID: 0206-051017-DF-035-A
Project Name: DCSD - 0206	Collection Date: 5/10/2017 6:17:00 AM
Lab ID: 1705896-069	Matrix: Drinking Water

Analyses	Result	Reporting Limit	Qual	Units	BatchID	Dilution Factor	Date Analyzed	Analyst
Trace Elements by ICP/MS E200.8								
				(E200.2)				
Lead	BRL	1.00		ug/L	243017	1	05/24/2017 00:10	JR

Qualifiers:

- * Value exceeds maximum contaminant level
- BRL Below reporting limit
- H Holding times for preparation or analysis exceeded
- N Analyte not NELAC certified
- B Analyte detected in the associated method blank
- > Greater than Result value

- E Estimated (value above quantitation range)
- S Spike Recovery outside limits due to matrix
- Narr See case narrative
- NC Not confirmed
- < Less than Result value
- J Estimated value detected below Reporting Limit

Analytical Environmental Services, Inc

Date: 24-May-17

Client: Atlanta Environmental Mgmt	Client Sample ID: 0206-051017-DF-035-B
Project Name: DCSD - 0206	Collection Date: 5/10/2017 6:18:00 AM
Lab ID: 1705896-070	Matrix: Drinking Water

Analyses	Result	Reporting Limit	Qual	Units	BatchID	Dilution Factor	Date Analyzed	Analyst
Trace Elements by ICP/MS E200.8								
				(E200.2)				
Lead	BRL	1.00		ug/L	243017	1	05/24/2017 00:14	JR

Qualifiers:

- * Value exceeds maximum contaminant level
- BRL Below reporting limit
- H Holding times for preparation or analysis exceeded
- N Analyte not NELAC certified
- B Analyte detected in the associated method blank
- > Greater than Result value

- E Estimated (value above quantitation range)
- S Spike Recovery outside limits due to matrix
- Narr See case narrative
- NC Not confirmed
- < Less than Result value
- J Estimated value detected below Reporting Limit

Analytical Environmental Services, Inc

Date: 24-May-17

Client: Atlanta Environmental Mgmt	Client Sample ID: 0206-051017-DF-036-A
Project Name: DCSD - 0206	Collection Date: 5/10/2017 6:15:00 AM
Lab ID: 1705896-071	Matrix: Drinking Water

Analyses	Result	Reporting Limit	Qual	Units	BatchID	Dilution Factor	Date Analyzed	Analyst
Trace Elements by ICP/MS E200.8					(E200.2)			
Lead	BRL	1.00		ug/L	243017	1	05/23/2017 23:32	JR

Qualifiers:

- * Value exceeds maximum contaminant level
- BRL Below reporting limit
- H Holding times for preparation or analysis exceeded
- N Analyte not NELAC certified
- B Analyte detected in the associated method blank
- > Greater than Result value

- E Estimated (value above quantitation range)
- S Spike Recovery outside limits due to matrix
- Narr See case narrative
- NC Not confirmed
- < Less than Result value
- J Estimated value detected below Reporting Limit

Analytical Environmental Services, Inc

Date: 24-May-17

Client: Atlanta Environmental Mgmt	Client Sample ID: 0206-051017-DF-036-B
Project Name: DCSD - 0206	Collection Date: 5/10/2017 6:16:00 AM
Lab ID: 1705896-072	Matrix: Drinking Water

Analyses	Result	Reporting Limit	Qual	Units	BatchID	Dilution Factor	Date Analyzed	Analyst
Trace Elements by ICP/MS E200.8					(E200.2)			
Lead	BRL	1.00		ug/L	243017	1	05/24/2017 00:17	JR

Qualifiers:

- * Value exceeds maximum contaminant level
- BRL Below reporting limit
- H Holding times for preparation or analysis exceeded
- N Analyte not NELAC certified
- B Analyte detected in the associated method blank
- > Greater than Result value

- E Estimated (value above quantitation range)
- S Spike Recovery outside limits due to matrix
- Narr See case narrative
- NC Not confirmed
- < Less than Result value
- J Estimated value detected below Reporting Limit

Analytical Environmental Services, Inc

Date: 24-May-17

Client: Atlanta Environmental Mgmt	Client Sample ID: 0206-051017-DF-037-A
Project Name: DCSD - 0206	Collection Date: 5/10/2017 6:10:00 AM
Lab ID: 1705896-073	Matrix: Drinking Water

Analyses	Result	Reporting Limit	Qual	Units	BatchID	Dilution Factor	Date Analyzed	Analyst
Trace Elements by ICP/MS E200.8					(E200.2)			
Lead	BRL	1.00		ug/L	243017	1	05/24/2017 00:21	JR

Qualifiers:

- * Value exceeds maximum contaminant level
- BRL Below reporting limit
- H Holding times for preparation or analysis exceeded
- N Analyte not NELAC certified
- B Analyte detected in the associated method blank
- > Greater than Result value

- E Estimated (value above quantitation range)
- S Spike Recovery outside limits due to matrix
- Narr See case narrative
- NC Not confirmed
- < Less than Result value
- J Estimated value detected below Reporting Limit

Analytical Environmental Services, Inc

Date: 24-May-17

Client: Atlanta Environmental Mgmt	Client Sample ID: 0206-051017-DF-037-B
Project Name: DCSD - 0206	Collection Date: 5/10/2017 6:11:00 AM
Lab ID: 1705896-074	Matrix: Drinking Water

Analyses	Result	Reporting Limit	Qual	Units	BatchID	Dilution Factor	Date Analyzed	Analyst
Trace Elements by ICP/MS E200.8					(E200.2)			
Lead	BRL	1.00		ug/L	243017	1	05/24/2017 00:24	JR

Qualifiers:

- * Value exceeds maximum contaminant level
- BRL Below reporting limit
- H Holding times for preparation or analysis exceeded
- N Analyte not NELAC certified
- B Analyte detected in the associated method blank
- > Greater than Result value

- E Estimated (value above quantitation range)
- S Spike Recovery outside limits due to matrix
- Narr See case narrative
- NC Not confirmed
- < Less than Result value
- J Estimated value detected below Reporting Limit

Analytical Environmental Services, Inc

Date: 24-May-17

Client: Atlanta Environmental Mgmt	Client Sample ID: 0206-051017-RS-001-A
Project Name: DCSD - 0206	Collection Date: 5/10/2017 5:17:00 AM
Lab ID: 1705896-075	Matrix: Drinking Water

Analyses	Result	Reporting Limit	Qual	Units	BatchID	Dilution Factor	Date Analyzed	Analyst
Trace Elements by ICP/MS E200.8								
				(E200.2)				
Lead	BRL	1.00		ug/L	243017	1	05/24/2017 00:28	JR

Qualifiers:

- * Value exceeds maximum contaminant level
- BRL Below reporting limit
- H Holding times for preparation or analysis exceeded
- N Analyte not NELAC certified
- B Analyte detected in the associated method blank
- > Greater than Result value

- E Estimated (value above quantitation range)
- S Spike Recovery outside limits due to matrix
- Narr See case narrative
- NC Not confirmed
- < Less than Result value
- J Estimated value detected below Reporting Limit

Analytical Environmental Services, Inc

Date: 24-May-17

Client: Atlanta Environmental Mgmt	Client Sample ID: 0206-051017-RS-001-B
Project Name: DCSD - 0206	Collection Date: 5/10/2017 5:18:00 AM
Lab ID: 1705896-076	Matrix: Drinking Water

Analyses	Result	Reporting Limit	Qual	Units	BatchID	Dilution Factor	Date Analyzed	Analyst
Trace Elements by ICP/MS E200.8					(E200.2)			
Lead	BRL	1.00		ug/L	243017	1	05/24/2017 00:31	JR

Qualifiers:

- * Value exceeds maximum contaminant level
- BRL Below reporting limit
- H Holding times for preparation or analysis exceeded
- N Analyte not NELAC certified
- B Analyte detected in the associated method blank
- > Greater than Result value

- E Estimated (value above quantitation range)
- S Spike Recovery outside limits due to matrix
- Narr See case narrative
- NC Not confirmed
- < Less than Result value
- J Estimated value detected below Reporting Limit

Analytical Environmental Services, Inc

Date: 24-May-17

Client: Atlanta Environmental Mgmt	Client Sample ID: 0206-051017-RS-001-C
Project Name: DCSD - 0206	Collection Date: 5/10/2017 5:19:00 AM
Lab ID: 1705896-077	Matrix: Drinking Water

Analyses	Result	Reporting Limit	Qual	Units	BatchID	Dilution Factor	Date Analyzed	Analyst
Trace Elements by ICP/MS E200.8					(E200.2)			
Lead	BRL	1.00		ug/L	243017	1	05/24/2017 00:35	JR

Qualifiers:

- * Value exceeds maximum contaminant level
- BRL Below reporting limit
- H Holding times for preparation or analysis exceeded
- N Analyte not NELAC certified
- B Analyte detected in the associated method blank
- > Greater than Result value

- E Estimated (value above quantitation range)
- S Spike Recovery outside limits due to matrix
- Narr See case narrative
- NC Not confirmed
- < Less than Result value
- J Estimated value detected below Reporting Limit

Analytical Environmental Services, Inc

Date: 24-May-17

Client: Atlanta Environmental Mgmt	Client Sample ID: 0206-051017-RS-002-A
Project Name: DCSD - 0206	Collection Date: 5/10/2017 6:00:00 AM
Lab ID: 1705896-078	Matrix: Drinking Water

Analyses	Result	Reporting Limit	Qual	Units	BatchID	Dilution Factor	Date Analyzed	Analyst
Trace Elements by ICP/MS E200.8					(E200.2)			
Lead	BRL	1.00		ug/L	243017	1	05/24/2017 00:38	JR

Qualifiers:

- * Value exceeds maximum contaminant level
- BRL Below reporting limit
- H Holding times for preparation or analysis exceeded
- N Analyte not NELAC certified
- B Analyte detected in the associated method blank
- > Greater than Result value

- E Estimated (value above quantitation range)
- S Spike Recovery outside limits due to matrix
- Narr See case narrative
- NC Not confirmed
- < Less than Result value
- J Estimated value detected below Reporting Limit

Analytical Environmental Services, Inc

Date: 24-May-17

Client: Atlanta Environmental Mgmt	Client Sample ID: 0206-051017-RS-002-B
Project Name: DCSD - 0206	Collection Date: 5/10/2017 6:01:00 AM
Lab ID: 1705896-079	Matrix: Drinking Water

Analyses	Result	Reporting Limit	Qual	Units	BatchID	Dilution Factor	Date Analyzed	Analyst
Trace Elements by ICP/MS E200.8					(E200.2)			
Lead	BRL	1.00		ug/L	243017	1	05/24/2017 00:42	JR

Qualifiers:

- * Value exceeds maximum contaminant level
- BRL Below reporting limit
- H Holding times for preparation or analysis exceeded
- N Analyte not NELAC certified
- B Analyte detected in the associated method blank
- > Greater than Result value

- E Estimated (value above quantitation range)
- S Spike Recovery outside limits due to matrix
- Narr See case narrative
- NC Not confirmed
- < Less than Result value
- J Estimated value detected below Reporting Limit

Analytical Environmental Services, Inc

Date: 24-May-17

Client: Atlanta Environmental Mgmt	Client Sample ID: 0206-051017-RS-003-A
Project Name: DCSD - 0206	Collection Date: 5/10/2017 6:19:00 AM
Lab ID: 1705896-080	Matrix: Drinking Water

Analyses	Result	Reporting Limit	Qual	Units	BatchID	Dilution Factor	Date Analyzed	Analyst
Trace Elements by ICP/MS E200.8					(E200.2)			
Lead	BRL	1.00		ug/L	243017	1	05/24/2017 00:52	JR

Qualifiers:

- * Value exceeds maximum contaminant level
- BRL Below reporting limit
- H Holding times for preparation or analysis exceeded
- N Analyte not NELAC certified
- B Analyte detected in the associated method blank
- > Greater than Result value

- E Estimated (value above quantitation range)
- S Spike Recovery outside limits due to matrix
- Narr See case narrative
- NC Not confirmed
- < Less than Result value
- J Estimated value detected below Reporting Limit

Analytical Environmental Services, Inc

Date: 24-May-17

Client: Atlanta Environmental Mgmt	Client Sample ID: 0206-051017-RS-003-B
Project Name: DCSD - 0206	Collection Date: 5/10/2017 6:20:00 AM
Lab ID: 1705896-081	Matrix: Drinking Water

Analyses	Result	Reporting Limit	Qual	Units	BatchID	Dilution Factor	Date Analyzed	Analyst
Trace Elements by ICP/MS E200.8					(E200.2)			
Lead	BRL	1.00		ug/L	243019	1	05/23/2017 18:54	JR

Qualifiers:

- * Value exceeds maximum contaminant level
- BRL Below reporting limit
- H Holding times for preparation or analysis exceeded
- N Analyte not NELAC certified
- B Analyte detected in the associated method blank
- > Greater than Result value

- E Estimated (value above quantitation range)
- S Spike Recovery outside limits due to matrix
- Narr See case narrative
- NC Not confirmed
- < Less than Result value
- J Estimated value detected below Reporting Limit

Analytical Environmental Services, Inc

Date: 24-May-17

Client: Atlanta Environmental Mgmt	Client Sample ID: 0206-051017-TL-001-A
Project Name: DCSD - 0206	Collection Date: 5/10/2017 5:28:00 AM
Lab ID: 1705896-082	Matrix: Drinking Water

Analyses	Result	Reporting Limit	Qual	Units	BatchID	Dilution Factor	Date Analyzed	Analyst
Trace Elements by ICP/MS E200.8					(E200.2)			
Lead	BRL	1.00		ug/L	243019	1	05/23/2017 19:18	JR

Qualifiers:

- * Value exceeds maximum contaminant level
- BRL Below reporting limit
- H Holding times for preparation or analysis exceeded
- N Analyte not NELAC certified
- B Analyte detected in the associated method blank
- > Greater than Result value

- E Estimated (value above quantitation range)
- S Spike Recovery outside limits due to matrix
- Narr See case narrative
- NC Not confirmed
- < Less than Result value
- J Estimated value detected below Reporting Limit

Analytical Environmental Services, Inc

Date: 24-May-17

Client: Atlanta Environmental Mgmt	Client Sample ID: 0206-051017-TL-001-B
Project Name: DCSD - 0206	Collection Date: 5/10/2017 5:29:00 AM
Lab ID: 1705896-083	Matrix: Drinking Water

Analyses	Result	Reporting Limit	Qual	Units	BatchID	Dilution Factor	Date Analyzed	Analyst
Trace Elements by ICP/MS E200.8					(E200.2)			
Lead	BRL	1.00		ug/L	243019	1	05/23/2017 19:21	JR

Qualifiers:

- * Value exceeds maximum contaminant level
- BRL Below reporting limit
- H Holding times for preparation or analysis exceeded
- N Analyte not NELAC certified
- B Analyte detected in the associated method blank
- > Greater than Result value

- E Estimated (value above quantitation range)
- S Spike Recovery outside limits due to matrix
- Narr See case narrative
- NC Not confirmed
- < Less than Result value
- J Estimated value detected below Reporting Limit

Analytical Environmental Services, Inc

Date: 24-May-17

Client: Atlanta Environmental Mgmt	Client Sample ID: 0206-051017-CS-001-A
Project Name: DCSD - 0206	Collection Date: 5/10/2017 5:12:00 AM
Lab ID: 1705896-084	Matrix: Drinking Water

Analyses	Result	Reporting Limit	Qual	Units	BatchID	Dilution Factor	Date Analyzed	Analyst
Trace Elements by ICP/MS E200.8					(E200.2)			
Lead	1.72	1.00		ug/L	243019	1	05/23/2017 19:25	JR

Qualifiers:

- * Value exceeds maximum contaminant level
- BRL Below reporting limit
- H Holding times for preparation or analysis exceeded
- N Analyte not NELAC certified
- B Analyte detected in the associated method blank
- > Greater than Result value

- E Estimated (value above quantitation range)
- S Spike Recovery outside limits due to matrix
- Narr See case narrative
- NC Not confirmed
- < Less than Result value
- J Estimated value detected below Reporting Limit

Analytical Environmental Services, Inc

Date: 24-May-17

Client: Atlanta Environmental Mgmt	Client Sample ID: 0206-051017-CS-001-B
Project Name: DCSD - 0206	Collection Date: 5/10/2017 5:14:00 AM
Lab ID: 1705896-085	Matrix: Drinking Water

Analyses	Result	Reporting Limit	Qual	Units	BatchID	Dilution Factor	Date Analyzed	Analyst
Trace Elements by ICP/MS E200.8					(E200.2)			
Lead	BRL	1.00		ug/L	243019	1	05/23/2017 20:20	JR

Qualifiers:

- * Value exceeds maximum contaminant level
- BRL Below reporting limit
- H Holding times for preparation or analysis exceeded
- N Analyte not NELAC certified
- B Analyte detected in the associated method blank
- > Greater than Result value

- E Estimated (value above quantitation range)
- S Spike Recovery outside limits due to matrix
- Narr See case narrative
- NC Not confirmed
- < Less than Result value
- J Estimated value detected below Reporting Limit

Analytical Environmental Services, Inc

Date: 24-May-17

Client: Atlanta Environmental Mgmt	Client Sample ID: 0206-051017-CS-001-C
Project Name: DCSD - 0206	Collection Date: 5/10/2017 5:13:00 AM
Lab ID: 1705896-086	Matrix: Drinking Water

Analyses	Result	Reporting Limit	Qual	Units	BatchID	Dilution Factor	Date Analyzed	Analyst
Trace Elements by ICP/MS E200.8					(E200.2)			
Lead	1.87	1.00		ug/L	243019	1	05/24/2017 13:17	JR

Qualifiers:

- * Value exceeds maximum contaminant level
- BRL Below reporting limit
- H Holding times for preparation or analysis exceeded
- N Analyte not NELAC certified
- B Analyte detected in the associated method blank
- > Greater than Result value

- E Estimated (value above quantitation range)
- S Spike Recovery outside limits due to matrix
- Narr See case narrative
- NC Not confirmed
- < Less than Result value
- J Estimated value detected below Reporting Limit

Analytical Environmental Services, Inc

Date: 24-May-17

Client: Atlanta Environmental Mgmt	Client Sample ID: 0206-051017-CS-002-A
Project Name: DCSD - 0206	Collection Date: 5/10/2017 5:36:00 AM
Lab ID: 1705896-087	Matrix: Drinking Water

Analyses	Result	Reporting Limit	Qual	Units	BatchID	Dilution Factor	Date Analyzed	Analyst
Trace Elements by ICP/MS E200.8					(E200.2)			
Lead	BRL	1.00		ug/L	243019	1	05/23/2017 20:27	JR

Qualifiers:

- * Value exceeds maximum contaminant level
- BRL Below reporting limit
- H Holding times for preparation or analysis exceeded
- N Analyte not NELAC certified
- B Analyte detected in the associated method blank
- > Greater than Result value

- E Estimated (value above quantitation range)
- S Spike Recovery outside limits due to matrix
- Narr See case narrative
- NC Not confirmed
- < Less than Result value
- J Estimated value detected below Reporting Limit

Analytical Environmental Services, Inc

Date: 24-May-17

Client: Atlanta Environmental Mgmt	Client Sample ID: 0206-051017-CS-002-B
Project Name: DCSD - 0206	Collection Date: 5/10/2017 5:37:00 AM
Lab ID: 1705896-088	Matrix: Drinking Water

Analyses	Result	Reporting Limit	Qual	Units	BatchID	Dilution Factor	Date Analyzed	Analyst
Trace Elements by ICP/MS E200.8					(E200.2)			
Lead	BRL	1.00		ug/L	243019	1	05/23/2017 20:31	JR

Qualifiers:

- * Value exceeds maximum contaminant level
- BRL Below reporting limit
- H Holding times for preparation or analysis exceeded
- N Analyte not NELAC certified
- B Analyte detected in the associated method blank
- > Greater than Result value

- E Estimated (value above quantitation range)
- S Spike Recovery outside limits due to matrix
- Narr See case narrative
- NC Not confirmed
- < Less than Result value
- J Estimated value detected below Reporting Limit

Analytical Environmental Services, Inc

Date: 24-May-17

Client: Atlanta Environmental Mgmt	Client Sample ID: 0206-051017-CS-003-A
Project Name: DCSD - 0206	Collection Date: 5/10/2017 5:38:00 AM
Lab ID: 1705896-089	Matrix: Drinking Water

Analyses	Result	Reporting Limit	Qual	Units	BatchID	Dilution Factor	Date Analyzed	Analyst
Trace Elements by ICP/MS E200.8					(E200.2)			
Lead	BRL	1.00		ug/L	243019	1	05/23/2017 20:41	JR

Qualifiers:

- * Value exceeds maximum contaminant level
- BRL Below reporting limit
- H Holding times for preparation or analysis exceeded
- N Analyte not NELAC certified
- B Analyte detected in the associated method blank
- > Greater than Result value

- E Estimated (value above quantitation range)
- S Spike Recovery outside limits due to matrix
- Narr See case narrative
- NC Not confirmed
- < Less than Result value
- J Estimated value detected below Reporting Limit

Analytical Environmental Services, Inc

Date: 24-May-17

Client: Atlanta Environmental Mgmt	Client Sample ID: 0206-051017-CS-003-B
Project Name: DCSD - 0206	Collection Date: 5/10/2017 5:39:00 AM
Lab ID: 1705896-090	Matrix: Drinking Water

Analyses	Result	Reporting Limit	Qual	Units	BatchID	Dilution Factor	Date Analyzed	Analyst
Trace Elements by ICP/MS E200.8								
				(E200.2)				
Lead	BRL	1.00		ug/L	243019	1	05/23/2017 20:45	JR

Qualifiers:

- * Value exceeds maximum contaminant level
- BRL Below reporting limit
- H Holding times for preparation or analysis exceeded
- N Analyte not NELAC certified
- B Analyte detected in the associated method blank
- > Greater than Result value

- E Estimated (value above quantitation range)
- S Spike Recovery outside limits due to matrix
- Narr See case narrative
- NC Not confirmed
- < Less than Result value
- J Estimated value detected below Reporting Limit

Analytical Environmental Services, Inc

Date: 24-May-17

Client: Atlanta Environmental Mgmt	Client Sample ID: 0206-051017-CS-004-A
Project Name: DCSD - 0206	Collection Date: 5/10/2017 5:40:00 AM
Lab ID: 1705896-091	Matrix: Drinking Water

Analyses	Result	Reporting Limit	Qual	Units	BatchID	Dilution Factor	Date Analyzed	Analyst
Trace Elements by ICP/MS E200.8								
				(E200.2)				
Lead	BRL	1.00		ug/L	243019	1	05/23/2017 19:04	JR

Qualifiers:

- * Value exceeds maximum contaminant level
- BRL Below reporting limit
- H Holding times for preparation or analysis exceeded
- N Analyte not NELAC certified
- B Analyte detected in the associated method blank
- > Greater than Result value

- E Estimated (value above quantitation range)
- S Spike Recovery outside limits due to matrix
- Narr See case narrative
- NC Not confirmed
- < Less than Result value
- J Estimated value detected below Reporting Limit

Analytical Environmental Services, Inc

Date: 24-May-17

Client: Atlanta Environmental Mgmt	Client Sample ID: 0206-051017-CS-004-B
Project Name: DCSD - 0206	Collection Date: 5/10/2017 5:41:00 AM
Lab ID: 1705896-092	Matrix: Drinking Water

Analyses	Result	Reporting Limit	Qual	Units	BatchID	Dilution Factor	Date Analyzed	Analyst
Trace Elements by ICP/MS E200.8								
				(E200.2)				
Lead	BRL	1.00		ug/L	243019	1	05/23/2017 20:48	JR

Qualifiers:

- * Value exceeds maximum contaminant level
- BRL Below reporting limit
- H Holding times for preparation or analysis exceeded
- N Analyte not NELAC certified
- B Analyte detected in the associated method blank
- > Greater than Result value

- E Estimated (value above quantitation range)
- S Spike Recovery outside limits due to matrix
- Narr See case narrative
- NC Not confirmed
- < Less than Result value
- J Estimated value detected below Reporting Limit

Analytical Environmental Services, Inc

Date: 24-May-17

Client: Atlanta Environmental Mgmt	Client Sample ID: 0206-051017-CS-005-A
Project Name: DCSD - 0206	Collection Date: 5/10/2017 5:42:00 AM
Lab ID: 1705896-093	Matrix: Drinking Water

Analyses	Result	Reporting Limit	Qual	Units	BatchID	Dilution Factor	Date Analyzed	Analyst
Trace Elements by ICP/MS E200.8					(E200.2)			
Lead	BRL	1.00		ug/L	243019	1	05/23/2017 20:52	JR

Qualifiers:

- * Value exceeds maximum contaminant level
- BRL Below reporting limit
- H Holding times for preparation or analysis exceeded
- N Analyte not NELAC certified
- B Analyte detected in the associated method blank
- > Greater than Result value

- E Estimated (value above quantitation range)
- S Spike Recovery outside limits due to matrix
- Narr See case narrative
- NC Not confirmed
- < Less than Result value
- J Estimated value detected below Reporting Limit

Analytical Environmental Services, Inc

Date: 24-May-17

Client: Atlanta Environmental Mgmt	Client Sample ID: 0206-051017-CS-005-B
Project Name: DCSD - 0206	Collection Date: 5/10/2017 5:43:00 AM
Lab ID: 1705896-094	Matrix: Drinking Water

Analyses	Result	Reporting Limit	Qual	Units	BatchID	Dilution Factor	Date Analyzed	Analyst
Trace Elements by ICP/MS E200.8					(E200.2)			
Lead	BRL	1.00		ug/L	243019	1	05/23/2017 20:55	JR

Qualifiers:

- * Value exceeds maximum contaminant level
- BRL Below reporting limit
- H Holding times for preparation or analysis exceeded
- N Analyte not NELAC certified
- B Analyte detected in the associated method blank
- > Greater than Result value

- E Estimated (value above quantitation range)
- S Spike Recovery outside limits due to matrix
- Narr See case narrative
- NC Not confirmed
- < Less than Result value
- J Estimated value detected below Reporting Limit

Analytical Environmental Services, Inc

Date: 24-May-17

Client: Atlanta Environmental Mgmt	Client Sample ID: 0206-051017-CS-006-A
Project Name: DCSD - 0206	Collection Date: 5/10/2017 5:44:00 AM
Lab ID: 1705896-095	Matrix: Drinking Water

Analyses	Result	Reporting Limit	Qual	Units	BatchID	Dilution Factor	Date Analyzed	Analyst
Trace Elements by ICP/MS E200.8					(E200.2)			
Lead	1.68	1.00		ug/L	243019	1	05/23/2017 20:59	JR

Qualifiers:

- * Value exceeds maximum contaminant level
- BRL Below reporting limit
- H Holding times for preparation or analysis exceeded
- N Analyte not NELAC certified
- B Analyte detected in the associated method blank
- > Greater than Result value

- E Estimated (value above quantitation range)
- S Spike Recovery outside limits due to matrix
- Narr See case narrative
- NC Not confirmed
- < Less than Result value
- J Estimated value detected below Reporting Limit

Analytical Environmental Services, Inc

Date: 24-May-17

Client: Atlanta Environmental Mgmt	Client Sample ID: 0206-051017-CS-006-B
Project Name: DCSD - 0206	Collection Date: 5/10/2017 5:45:00 AM
Lab ID: 1705896-096	Matrix: Drinking Water

Analyses	Result	Reporting Limit	Qual	Units	BatchID	Dilution Factor	Date Analyzed	Analyst
Trace Elements by ICP/MS E200.8					(E200.2)			
Lead	BRL	1.00		ug/L	243019	1	05/23/2017 21:02	JR

Qualifiers:

- * Value exceeds maximum contaminant level
- BRL Below reporting limit
- H Holding times for preparation or analysis exceeded
- N Analyte not NELAC certified
- B Analyte detected in the associated method blank
- > Greater than Result value

- E Estimated (value above quantitation range)
- S Spike Recovery outside limits due to matrix
- Narr See case narrative
- NC Not confirmed
- < Less than Result value
- J Estimated value detected below Reporting Limit

Analytical Environmental Services, Inc

Date: 24-May-17

Client: Atlanta Environmental Mgmt	Client Sample ID: 0206-051017-CS-007-A
Project Name: DCSD - 0206	Collection Date: 5/10/2017 5:46:00 AM
Lab ID: 1705896-097	Matrix: Drinking Water

Analyses	Result	Reporting Limit	Qual	Units	BatchID	Dilution Factor	Date Analyzed	Analyst
Trace Elements by ICP/MS E200.8					(E200.2)			
Lead	BRL	1.00		ug/L	243019	1	05/23/2017 21:06	JR

Qualifiers:

- * Value exceeds maximum contaminant level
- BRL Below reporting limit
- H Holding times for preparation or analysis exceeded
- N Analyte not NELAC certified
- B Analyte detected in the associated method blank
- > Greater than Result value

- E Estimated (value above quantitation range)
- S Spike Recovery outside limits due to matrix
- Narr See case narrative
- NC Not confirmed
- < Less than Result value
- J Estimated value detected below Reporting Limit

Analytical Environmental Services, Inc

Date: 24-May-17

Client: Atlanta Environmental Mgmt	Client Sample ID: 0206-051017-CS-007-B
Project Name: DCSD - 0206	Collection Date: 5/10/2017 5:47:00 AM
Lab ID: 1705896-098	Matrix: Drinking Water

Analyses	Result	Reporting Limit	Qual	Units	BatchID	Dilution Factor	Date Analyzed	Analyst
Trace Elements by ICP/MS E200.8					(E200.2)			
Lead	BRL	1.00		ug/L	243019	1	05/23/2017 21:09	JR

Qualifiers:

- * Value exceeds maximum contaminant level
- BRL Below reporting limit
- H Holding times for preparation or analysis exceeded
- N Analyte not NELAC certified
- B Analyte detected in the associated method blank
- > Greater than Result value

- E Estimated (value above quantitation range)
- S Spike Recovery outside limits due to matrix
- Narr See case narrative
- NC Not confirmed
- < Less than Result value
- J Estimated value detected below Reporting Limit

Analytical Environmental Services, Inc

Date: 24-May-17

Client: Atlanta Environmental Mgmt	Client Sample ID: 0206-051017-IM-001-A
Project Name: DCSD - 0206	Collection Date: 5/10/2017 5:15:00 AM
Lab ID: 1705896-099	Matrix: Drinking Water

Analyses	Result	Reporting Limit	Qual	Units	BatchID	Dilution Factor	Date Analyzed	Analyst
Trace Elements by ICP/MS E200.8					(E200.2)			
Lead	BRL	1.00		ug/L	243019	1	05/23/2017 21:13	JR

Qualifiers:

- * Value exceeds maximum contaminant level
- BRL Below reporting limit
- H Holding times for preparation or analysis exceeded
- N Analyte not NELAC certified
- B Analyte detected in the associated method blank
- > Greater than Result value

- E Estimated (value above quantitation range)
- S Spike Recovery outside limits due to matrix
- Narr See case narrative
- NC Not confirmed
- < Less than Result value
- J Estimated value detected below Reporting Limit

Analytical Environmental Services, Inc

Date: 24-May-17

Client: Atlanta Environmental Mgmt	Client Sample ID: 0206-051017-OT-001-A
Project Name: DCSD - 0206	Collection Date: 5/10/2017 5:40:00 AM
Lab ID: 1705896-100	Matrix: Drinking Water

Analyses	Result	Reporting Limit	Qual	Units	BatchID	Dilution Factor	Date Analyzed	Analyst
Trace Elements by ICP/MS E200.8								
				(E200.2)				
Lead	BRL	1.00		ug/L	243019	1	05/23/2017 21:23	JR

Qualifiers:

- * Value exceeds maximum contaminant level
- BRL Below reporting limit
- H Holding times for preparation or analysis exceeded
- N Analyte not NELAC certified
- B Analyte detected in the associated method blank
- > Greater than Result value

- E Estimated (value above quantitation range)
- S Spike Recovery outside limits due to matrix
- Narr See case narrative
- NC Not confirmed
- < Less than Result value
- J Estimated value detected below Reporting Limit

Analytical Environmental Services, Inc

Date: 24-May-17

Client: Atlanta Environmental Mgmt	Client Sample ID: 0206-051017-OT-001-B
Project Name: DCSD - 0206	Collection Date: 5/10/2017 5:41:00 AM
Lab ID: 1705896-101	Matrix: Drinking Water

Analyses	Result	Reporting Limit	Qual	Units	BatchID	Dilution Factor	Date Analyzed	Analyst
Trace Elements by ICP/MS E200.8								
				(E200.2)				
Lead	BRL	1.00		ug/L	242782	1	05/18/2017 02:36	JR

Qualifiers:

- * Value exceeds maximum contaminant level
- BRL Below reporting limit
- H Holding times for preparation or analysis exceeded
- N Analyte not NELAC certified
- B Analyte detected in the associated method blank
- > Greater than Result value

- E Estimated (value above quantitation range)
- S Spike Recovery outside limits due to matrix
- Narr See case narrative
- NC Not confirmed
- < Less than Result value
- J Estimated value detected below Reporting Limit

Analytical Environmental Services, Inc

Date: 24-May-17

Client: Atlanta Environmental Mgmt	Client Sample ID: 0206-051017-SC-001-A
Project Name: DCSD - 0206	Collection Date: 5/10/2017 5:05:00 AM
Lab ID: 1705896-102	Matrix: Drinking Water

Analyses	Result	Reporting Limit	Qual	Units	BatchID	Dilution Factor	Date Analyzed	Analyst
Trace Elements by ICP/MS E200.8					(E200.2)			
Lead	BRL	1.00		ug/L	242782	1	05/18/2017 02:40	JR

Qualifiers:

- * Value exceeds maximum contaminant level
- BRL Below reporting limit
- H Holding times for preparation or analysis exceeded
- N Analyte not NELAC certified
- B Analyte detected in the associated method blank
- > Greater than Result value

- E Estimated (value above quantitation range)
- S Spike Recovery outside limits due to matrix
- Narr See case narrative
- NC Not confirmed
- < Less than Result value
- J Estimated value detected below Reporting Limit

Analytical Environmental Services, Inc

Date: 24-May-17

Client: Atlanta Environmental Mgmt	Client Sample ID: 0206-051017-DF-038-A
Project Name: DCSD - 0206	Collection Date: 5/10/2017 6:08:00 AM
Lab ID: 1705896-103	Matrix: Drinking Water

Analyses	Result	Reporting Limit	Qual	Units	BatchID	Dilution Factor	Date Analyzed	Analyst
Trace Elements by ICP/MS E200.8					(E200.2)			
Lead	BRL	1.00		ug/L	242782	1	05/18/2017 02:50	JR

Qualifiers:

- * Value exceeds maximum contaminant level
- BRL Below reporting limit
- H Holding times for preparation or analysis exceeded
- N Analyte not NELAC certified
- B Analyte detected in the associated method blank
- > Greater than Result value

- E Estimated (value above quantitation range)
- S Spike Recovery outside limits due to matrix
- Narr See case narrative
- NC Not confirmed
- < Less than Result value
- J Estimated value detected below Reporting Limit

Analytical Environmental Services, Inc

Date: 24-May-17

Client: Atlanta Environmental Mgmt	Client Sample ID: 0206-051017-DF-038-B
Project Name: DCSD - 0206	Collection Date: 5/10/2017 6:09:00 AM
Lab ID: 1705896-104	Matrix: Drinking Water

Analyses	Result	Reporting Limit	Qual	Units	BatchID	Dilution Factor	Date Analyzed	Analyst
Trace Elements by ICP/MS E200.8					(E200.2)			
Lead	BRL	1.00		ug/L	242782	1	05/18/2017 01:58	JR

Qualifiers:

- * Value exceeds maximum contaminant level
- BRL Below reporting limit
- H Holding times for preparation or analysis exceeded
- N Analyte not NELAC certified
- B Analyte detected in the associated method blank
- > Greater than Result value

- E Estimated (value above quantitation range)
- S Spike Recovery outside limits due to matrix
- Narr See case narrative
- NC Not confirmed
- < Less than Result value
- J Estimated value detected below Reporting Limit

SAMPLE/COOLER RECEIPT CHECKLIST

1. Client Name: _____

AES Work Order Number: _____

2. Carrier: FedEx UPS USPS Client Courier Other _____

	Yes	No	N/A	Details	Comments
3. Shipping container/cooler received in good condition?				damaged <input type="checkbox"/> leaking <input type="checkbox"/> other <input type="checkbox"/>	
4. Custody seals present on shipping container?					
5. Custody seals intact on shipping container?					
6. Temperature blanks present?					
7. Cooler temperature(s) within limits of 0-6°C? [See item 13 and 14 for temperature recordings.]				Cooling initiated for recently collected samples / ice present <input type="checkbox"/>	
8. Chain of Custody (COC) present?					
9. Chain of Custody signed, dated, and timed when relinquished and received?					
10. Sampler name and/or signature on COC?					
11. Were all samples received within holding time?					
12. TAT marked on the COC?				If no TAT indicated, proceeded with standard TAT per Terms & Conditions. <input type="checkbox"/>	

13. Cooler 1 Temperature _____ °C Cooler 2 Temperature _____ °C Cooler 3 Temperature _____ °C Cooler 4 Temperature _____ °C
 Cooler 5 Temperature _____ °C Cooler 6 Temperature _____ °C Cooler 7 Temperature _____ °C Cooler 8 Temperature _____ °C

15. Comments: _____

I certify that I have completed sections 1-15 (dated initials). _____

	Yes	No	N/A	Details	Comments
16. Were sample containers intact upon receipt?					
17. Custody seals present on sample containers?					
18. Custody seals intact on sample containers?					
19. Do sample container labels match the COC?				incomplete info <input type="checkbox"/> illegible <input type="checkbox"/> no label <input type="checkbox"/> other <input type="checkbox"/>	
20. Are analyses requested indicated on the COC?					
21. Were all of the samples listed on the COC received?				samples received but not listed on COC <input type="checkbox"/> samples listed on COC not received <input type="checkbox"/>	
22. Was the sample collection date/time noted?					
23. Did we receive sufficient sample volume for indicated analyses?					
24. Were samples received in appropriate containers?					
25. Were VOA samples received without headspace (< 1/4" bubble)?					
26. Were trip blanks submitted?				listed on COC <input type="checkbox"/> not listed on COC <input type="checkbox"/>	

27. Comments: _____

I certify that I have completed sections 16-27 (dated initials). _____

	Yes	No	N/A	Details	Comments
28. Have containers needing chemical preservation been checked?					
29. Containers meet preservation guidelines?					
30. Was pH adjusted?					

I certify that I have completed sections 28-30 (dated initials). _____

Client: Atlanta Environmental Mgmt
 Project Name: DCSD - 0206
 Workorder: 1705896

ANALYTICAL QC SUMMARY REPORT

BatchID: 242782

Sample ID: MB-242782	Client ID:	Units: ug/L	Prep Date: 05/17/2017	Run No: 343400							
SampleType: MBLK	TestCode: Trace Elements by ICP/MS E200.8	BatchID: 242782	Analysis Date: 05/18/2017	Seq No: 7528984							
Analyte	Result	RPT Limit	SPK value	SPK Ref Val	%REC	Low Limit	High Limit	RPD Ref Val	%RPD	RPD Limit	Qual

Lead BRL 1.00

Sample ID: LCS-242782	Client ID:	Units: ug/L	Prep Date: 05/17/2017	Run No: 343400							
SampleType: LCS	TestCode: Trace Elements by ICP/MS E200.8	BatchID: 242782	Analysis Date: 05/18/2017	Seq No: 7530893							
Analyte	Result	RPT Limit	SPK value	SPK Ref Val	%REC	Low Limit	High Limit	RPD Ref Val	%RPD	RPD Limit	Qual

Lead 96.03 1.00 100.0 96.0 85 115

Sample ID: 1705525-066AMS	Client ID:	Units: ug/L	Prep Date: 05/17/2017	Run No: 343400							
SampleType: MS	TestCode: Trace Elements by ICP/MS E200.8	BatchID: 242782	Analysis Date: 05/18/2017	Seq No: 7528987							
Analyte	Result	RPT Limit	SPK value	SPK Ref Val	%REC	Low Limit	High Limit	RPD Ref Val	%RPD	RPD Limit	Qual

Lead 108.8 1.00 100.0 109 70 130

Sample ID: 1705896-104AMS	Client ID: 0206-051017-DF-038-B	Units: ug/L	Prep Date: 05/17/2017	Run No: 343400							
SampleType: MS	TestCode: Trace Elements by ICP/MS E200.8	BatchID: 242782	Analysis Date: 05/18/2017	Seq No: 7528992							
Analyte	Result	RPT Limit	SPK value	SPK Ref Val	%REC	Low Limit	High Limit	RPD Ref Val	%RPD	RPD Limit	Qual

Lead 105.6 1.00 100.0 106 70 130

Sample ID: 1705525-066AMSD	Client ID:	Units: ug/L	Prep Date: 05/17/2017	Run No: 343400							
SampleType: MSD	TestCode: Trace Elements by ICP/MS E200.8	BatchID: 242782	Analysis Date: 05/18/2017	Seq No: 7528988							
Analyte	Result	RPT Limit	SPK value	SPK Ref Val	%REC	Low Limit	High Limit	RPD Ref Val	%RPD	RPD Limit	Qual

Lead 109.5 1.00 100.0 110 70 130 108.8 0.645 20

Qualifiers: > Greater than Result value < Less than Result value B Analyte detected in the associated method blank
 BRL Below reporting limit E Estimated (value above quantitation range) H Holding times for preparation or analysis exceeded
 J Estimated value detected below Reporting Limit N Analyte not NELAC certified R RPD outside limits due to matrix
 Rpt Lim Reporting Limit S Spike Recovery outside limits due to matrix

Client: Atlanta Environmental Mgmt
Project Name: DCSD - 0206
Workorder: 1705896

ANALYTICAL QC SUMMARY REPORT

BatchID: 243012

Sample ID: MB-243012	Client ID:	Units: ug/L	Prep Date: 05/23/2017	Run No: 343782							
SampleType: MBLK	TestCode: Trace Elements by ICP/MS E200.8	BatchID: 243012	Analysis Date: 05/23/2017	Seq No: 7538968							
Analyte	Result	RPT Limit	SPK value	SPK Ref Val	%REC	Low Limit	High Limit	RPD Ref Val	%RPD	RPD Limit	Qual

Lead BRL 1.00

Sample ID: LCS-243012	Client ID:	Units: ug/L	Prep Date: 05/23/2017	Run No: 343782							
SampleType: LCS	TestCode: Trace Elements by ICP/MS E200.8	BatchID: 243012	Analysis Date: 05/23/2017	Seq No: 7538969							
Analyte	Result	RPT Limit	SPK value	SPK Ref Val	%REC	Low Limit	High Limit	RPD Ref Val	%RPD	RPD Limit	Qual

Lead 99.57 1.00 100.0 99.6 85 115

Sample ID: 1705896-001AMS	Client ID: 0206-051017-DF-001-A	Units: ug/L	Prep Date: 05/23/2017	Run No: 343782							
SampleType: MS	TestCode: Trace Elements by ICP/MS E200.8	BatchID: 243012	Analysis Date: 05/23/2017	Seq No: 7538971							
Analyte	Result	RPT Limit	SPK value	SPK Ref Val	%REC	Low Limit	High Limit	RPD Ref Val	%RPD	RPD Limit	Qual

Lead 97.34 1.00 100.0 97.3 70 130

Sample ID: 1705896-011AMS	Client ID: 0206-051017-DF-006-A	Units: ug/L	Prep Date: 05/23/2017	Run No: 343782							
SampleType: MS	TestCode: Trace Elements by ICP/MS E200.8	BatchID: 243012	Analysis Date: 05/23/2017	Seq No: 7538974							
Analyte	Result	RPT Limit	SPK value	SPK Ref Val	%REC	Low Limit	High Limit	RPD Ref Val	%RPD	RPD Limit	Qual

Lead 94.20 1.00 100.0 94.2 70 130

Sample ID: 1705896-001AMSD	Client ID: 0206-051017-DF-001-A	Units: ug/L	Prep Date: 05/23/2017	Run No: 343782							
SampleType: MSD	TestCode: Trace Elements by ICP/MS E200.8	BatchID: 243012	Analysis Date: 05/23/2017	Seq No: 7538972							
Analyte	Result	RPT Limit	SPK value	SPK Ref Val	%REC	Low Limit	High Limit	RPD Ref Val	%RPD	RPD Limit	Qual

Lead 93.26 1.00 100.0 93.3 70 130 97.34 4.27 20

Qualifiers:	> Greater than Result value	< Less than Result value	B Analyte detected in the associated method blank
	BRL Below reporting limit	E Estimated (value above quantitation range)	H Holding times for preparation or analysis exceeded
	J Estimated value detected below Reporting Limit	N Analyte not NELAC certified	R RPD outside limits due to matrix
	Rpt Lim Reporting Limit	S Spike Recovery outside limits due to matrix	

Client: Atlanta Environmental Mgmt
 Project Name: DCSD - 0206
 Workorder: 1705896

ANALYTICAL QC SUMMARY REPORT

BatchID: 243014

Sample ID: MB-243014	Client ID:	Units: ug/L	Prep Date: 05/23/2017	Run No: 343783							
SampleType: MBLK	TestCode: Trace Elements by ICP/MS E200.8	BatchID: 243014	Analysis Date: 05/23/2017	Seq No: 7539008							
Analyte	Result	RPT Limit	SPK value	SPK Ref Val	%REC	Low Limit	High Limit	RPD Ref Val	%RPD	RPD Limit	Qual

Lead BRL 1.00

Sample ID: LCS-243014	Client ID:	Units: ug/L	Prep Date: 05/23/2017	Run No: 343783							
SampleType: LCS	TestCode: Trace Elements by ICP/MS E200.8	BatchID: 243014	Analysis Date: 05/23/2017	Seq No: 7539009							
Analyte	Result	RPT Limit	SPK value	SPK Ref Val	%REC	Low Limit	High Limit	RPD Ref Val	%RPD	RPD Limit	Qual

Lead 94.81 1.00 100.0 94.8 85 115

Sample ID: 1705896-021AMS	Client ID: 0206-051017-DF-011-A	Units: ug/L	Prep Date: 05/23/2017	Run No: 343783							
SampleType: MS	TestCode: Trace Elements by ICP/MS E200.8	BatchID: 243014	Analysis Date: 05/23/2017	Seq No: 7539011							
Analyte	Result	RPT Limit	SPK value	SPK Ref Val	%REC	Low Limit	High Limit	RPD Ref Val	%RPD	RPD Limit	Qual

Lead 92.07 1.00 100.0 92.1 70 130

Sample ID: 1705896-031AMS	Client ID: 0206-051017-DF-016-A	Units: ug/L	Prep Date: 05/23/2017	Run No: 343783							
SampleType: MS	TestCode: Trace Elements by ICP/MS E200.8	BatchID: 243014	Analysis Date: 05/23/2017	Seq No: 7539016							
Analyte	Result	RPT Limit	SPK value	SPK Ref Val	%REC	Low Limit	High Limit	RPD Ref Val	%RPD	RPD Limit	Qual

Lead 94.97 1.00 100.0 1.195 93.8 70 130

Sample ID: 1705896-021AMSD	Client ID: 0206-051017-DF-011-A	Units: ug/L	Prep Date: 05/23/2017	Run No: 343783							
SampleType: MSD	TestCode: Trace Elements by ICP/MS E200.8	BatchID: 243014	Analysis Date: 05/23/2017	Seq No: 7539012							
Analyte	Result	RPT Limit	SPK value	SPK Ref Val	%REC	Low Limit	High Limit	RPD Ref Val	%RPD	RPD Limit	Qual

Lead 95.29 1.00 100.0 95.3 70 130 92.07 3.44 20

Qualifiers:	> Greater than Result value	< Less than Result value	B Analyte detected in the associated method blank
	BRL Below reporting limit	E Estimated (value above quantitation range)	H Holding times for preparation or analysis exceeded
	J Estimated value detected below Reporting Limit	N Analyte not NELAC certified	R RPD outside limits due to matrix
	Rpt Lim Reporting Limit	S Spike Recovery outside limits due to matrix	

Client: Atlanta Environmental Mgmt
 Project Name: DCSD - 0206
 Workorder: 1705896

ANALYTICAL QC SUMMARY REPORT

BatchID: 243015

Sample ID: MB-243015	Client ID:	Units: ug/L	Prep Date: 05/23/2017	Run No: 343785							
SampleType: MBLK	TestCode: Trace Elements by ICP/MS E200.8	BatchID: 243015	Analysis Date: 05/23/2017	Seq No: 7539143							
Analyte	Result	RPT Limit	SPK value	SPK Ref Val	%REC	Low Limit	High Limit	RPD Ref Val	%RPD	RPD Limit	Qual

Lead BRL 1.00

Sample ID: LCS-243015	Client ID:	Units: ug/L	Prep Date: 05/23/2017	Run No: 343785							
SampleType: LCS	TestCode: Trace Elements by ICP/MS E200.8	BatchID: 243015	Analysis Date: 05/23/2017	Seq No: 7539144							
Analyte	Result	RPT Limit	SPK value	SPK Ref Val	%REC	Low Limit	High Limit	RPD Ref Val	%RPD	RPD Limit	Qual

Lead 93.53 1.00 100.0 93.5 85 115

Sample ID: 1705896-041AMS	Client ID: 0206-051017-DF-021-A	Units: ug/L	Prep Date: 05/23/2017	Run No: 343785							
SampleType: MS	TestCode: Trace Elements by ICP/MS E200.8	BatchID: 243015	Analysis Date: 05/23/2017	Seq No: 7539146							
Analyte	Result	RPT Limit	SPK value	SPK Ref Val	%REC	Low Limit	High Limit	RPD Ref Val	%RPD	RPD Limit	Qual

Lead 91.81 1.00 100.0 91.8 70 130

Sample ID: 1705896-051AMS	Client ID: 0206-051017-DF-026-A	Units: ug/L	Prep Date: 05/23/2017	Run No: 343785							
SampleType: MS	TestCode: Trace Elements by ICP/MS E200.8	BatchID: 243015	Analysis Date: 05/23/2017	Seq No: 7539149							
Analyte	Result	RPT Limit	SPK value	SPK Ref Val	%REC	Low Limit	High Limit	RPD Ref Val	%RPD	RPD Limit	Qual

Lead 87.66 1.00 100.0 87.7 70 130

Sample ID: 1705896-041AMSD	Client ID: 0206-051017-DF-021-A	Units: ug/L	Prep Date: 05/23/2017	Run No: 343785							
SampleType: MSD	TestCode: Trace Elements by ICP/MS E200.8	BatchID: 243015	Analysis Date: 05/23/2017	Seq No: 7539147							
Analyte	Result	RPT Limit	SPK value	SPK Ref Val	%REC	Low Limit	High Limit	RPD Ref Val	%RPD	RPD Limit	Qual

Lead 92.77 1.00 100.0 92.8 70 130 91.81 1.04 20

Qualifiers: > Greater than Result value < Less than Result value B Analyte detected in the associated method blank
 BRL Below reporting limit E Estimated (value above quantitation range) H Holding times for preparation or analysis exceeded
 J Estimated value detected below Reporting Limit N Analyte not NELAC certified R RPD outside limits due to matrix
 Rpt Lim Reporting Limit S Spike Recovery outside limits due to matrix

Client: Atlanta Environmental Mgmt
Project Name: DCSD - 0206
Workorder: 1705896

ANALYTICAL QC SUMMARY REPORT

BatchID: 243017

Sample ID: MB-243017	Client ID:	Units: ug/L	Prep Date: 05/23/2017	Run No: 343786							
SampleType: MBLK	TestCode: Trace Elements by ICP/MS E200.8	BatchID: 243017	Analysis Date: 05/23/2017	Seq No: 7539185							
Analyte	Result	RPT Limit	SPK value	SPK Ref Val	%REC	Low Limit	High Limit	RPD Ref Val	%RPD	RPD Limit	Qual

Lead BRL 1.00

Sample ID: LCS-243017	Client ID:	Units: ug/L	Prep Date: 05/23/2017	Run No: 343786							
SampleType: LCS	TestCode: Trace Elements by ICP/MS E200.8	BatchID: 243017	Analysis Date: 05/23/2017	Seq No: 7539186							
Analyte	Result	RPT Limit	SPK value	SPK Ref Val	%REC	Low Limit	High Limit	RPD Ref Val	%RPD	RPD Limit	Qual

Lead 92.60 1.00 100.0 92.6 85 115

Sample ID: 1705896-061AMS	Client ID: 0206-051017-DF-031-A	Units: ug/L	Prep Date: 05/23/2017	Run No: 343786							
SampleType: MS	TestCode: Trace Elements by ICP/MS E200.8	BatchID: 243017	Analysis Date: 05/23/2017	Seq No: 7539189							
Analyte	Result	RPT Limit	SPK value	SPK Ref Val	%REC	Low Limit	High Limit	RPD Ref Val	%RPD	RPD Limit	Qual

Lead 93.69 1.00 100.0 93.7 70 130

Sample ID: 1705896-071AMS	Client ID: 0206-051017-DF-036-A	Units: ug/L	Prep Date: 05/23/2017	Run No: 343786							
SampleType: MS	TestCode: Trace Elements by ICP/MS E200.8	BatchID: 243017	Analysis Date: 05/23/2017	Seq No: 7539195							
Analyte	Result	RPT Limit	SPK value	SPK Ref Val	%REC	Low Limit	High Limit	RPD Ref Val	%RPD	RPD Limit	Qual

Lead 94.89 1.00 100.0 94.9 70 130

Sample ID: 1705896-061AMSD	Client ID: 0206-051017-DF-031-A	Units: ug/L	Prep Date: 05/23/2017	Run No: 343786							
SampleType: MSD	TestCode: Trace Elements by ICP/MS E200.8	BatchID: 243017	Analysis Date: 05/23/2017	Seq No: 7539193							
Analyte	Result	RPT Limit	SPK value	SPK Ref Val	%REC	Low Limit	High Limit	RPD Ref Val	%RPD	RPD Limit	Qual

Lead 95.48 1.00 100.0 95.5 70 130 93.69 1.89 20

Qualifiers:	> Greater than Result value	< Less than Result value	B Analyte detected in the associated method blank
	BRL Below reporting limit	E Estimated (value above quantitation range)	H Holding times for preparation or analysis exceeded
	J Estimated value detected below Reporting Limit	N Analyte not NELAC certified	R RPD outside limits due to matrix
	Rpt Lim Reporting Limit	S Spike Recovery outside limits due to matrix	

Client: Atlanta Environmental Mgmt
Project Name: DCSD - 0206
Workorder: 1705896

ANALYTICAL QC SUMMARY REPORT

BatchID: 243019

Sample ID: MB-243019	Client ID:	Units: ug/L	Prep Date: 05/23/2017	Run No: 343784							
SampleType: MBLK	TestCode: Trace Elements by ICP/MS E200.8	BatchID: 243019	Analysis Date: 05/23/2017	Seq No: 7539099							
Analyte	Result	RPT Limit	SPK value	SPK Ref Val	%REC	Low Limit	High Limit	RPD Ref Val	%RPD	RPD Limit	Qual

Lead BRL 1.00

Sample ID: LCS-243019	Client ID:	Units: ug/L	Prep Date: 05/23/2017	Run No: 343784							
SampleType: LCS	TestCode: Trace Elements by ICP/MS E200.8	BatchID: 243019	Analysis Date: 05/23/2017	Seq No: 7539100							
Analyte	Result	RPT Limit	SPK value	SPK Ref Val	%REC	Low Limit	High Limit	RPD Ref Val	%RPD	RPD Limit	Qual

Lead 94.54 1.00 100.0 94.5 85 115

Sample ID: 1705896-081AMS	Client ID: 0206-051017-RS-003-B	Units: ug/L	Prep Date: 05/23/2017	Run No: 343784							
SampleType: MS	TestCode: Trace Elements by ICP/MS E200.8	BatchID: 243019	Analysis Date: 05/23/2017	Seq No: 7539102							
Analyte	Result	RPT Limit	SPK value	SPK Ref Val	%REC	Low Limit	High Limit	RPD Ref Val	%RPD	RPD Limit	Qual

Lead 93.89 1.00 100.0 0.2986 93.6 70 130

Sample ID: 1705896-091AMS	Client ID: 0206-051017-CS-004-A	Units: ug/L	Prep Date: 05/23/2017	Run No: 343784							
SampleType: MS	TestCode: Trace Elements by ICP/MS E200.8	BatchID: 243019	Analysis Date: 05/23/2017	Seq No: 7539107							
Analyte	Result	RPT Limit	SPK value	SPK Ref Val	%REC	Low Limit	High Limit	RPD Ref Val	%RPD	RPD Limit	Qual

Lead 90.02 1.00 100.0 90.0 70 130

Sample ID: 1705896-081AMSD	Client ID: 0206-051017-RS-003-B	Units: ug/L	Prep Date: 05/23/2017	Run No: 343784							
SampleType: MSD	TestCode: Trace Elements by ICP/MS E200.8	BatchID: 243019	Analysis Date: 05/23/2017	Seq No: 7539103							
Analyte	Result	RPT Limit	SPK value	SPK Ref Val	%REC	Low Limit	High Limit	RPD Ref Val	%RPD	RPD Limit	Qual

Lead 91.77 1.00 100.0 0.2986 91.5 70 130 93.89 2.28 20

Qualifiers: > Greater than Result value < Less than Result value B Analyte detected in the associated method blank
 BRL Below reporting limit E Estimated (value above quantitation range) H Holding times for preparation or analysis exceeded
 J Estimated value detected below Reporting Limit N Analyte not NELAC certified R RPD outside limits due to matrix
 Rpt Lim Reporting Limit S Spike Recovery outside limits due to matrix