

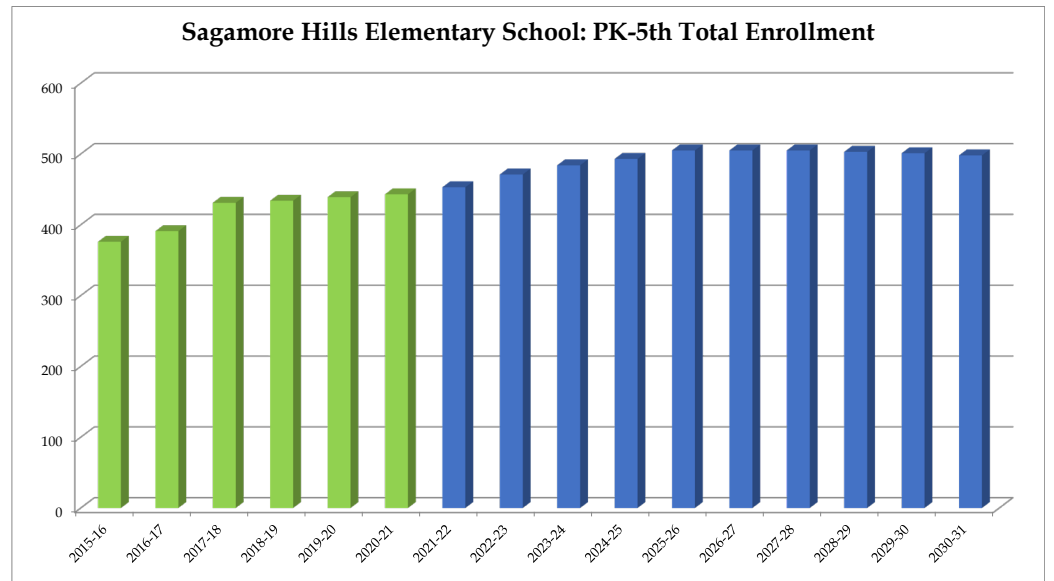
Sagamore Hills Elementary School

| | 2015-16 | 2016-17 | 2017-18 | 2018-19 | 2019-20 | 2020-21 | 2021-22 | 2022-23 | 2023-24 | 2024-25 | 2025-26 | 2026-27 | 2027-28 | 2028-29 | 2029-30 | 2030-31 |
|--------------------|------------|------------|------------|------------|------------|------------|------------|------------|------------|------------|------------|------------|------------|------------|------------|------------|
| PK | 34 | 30 | 29 | 30 | 34 | 32 | 34 | 34 | 34 | 34 | 34 | 34 | 34 | 34 | 34 | 34 |
| K | 49 | 59 | 67 | 62 | 66 | 80 | 74 | 75 | 76 | 77 | 77 | 77 | 77 | 76 | 76 | 75 |
| 1 | 71 | 57 | 76 | 79 | 79 | 71 | 83 | 82 | 83 | 84 | 85 | 85 | 84 | 84 | 83 | 83 |
| 2 | 63 | 66 | 69 | 67 | 72 | 73 | 70 | 81 | 80 | 81 | 82 | 82 | 82 | 81 | 81 | 80 |
| 3 | 58 | 71 | 67 | 74 | 62 | 65 | 72 | 69 | 79 | 78 | 79 | 79 | 79 | 79 | 78 | 78 |
| 4 | 51 | 63 | 65 | 60 | 70 | 57 | 64 | 69 | 66 | 76 | 75 | 76 | 76 | 76 | 76 | 75 |
| 5 | 50 | 45 | 58 | 62 | 56 | 65 | 56 | 61 | 66 | 63 | 73 | 72 | 73 | 73 | 73 | 73 |
| Total: PK-5 | 376 | 391 | 431 | 434 | 439 | 443 | 453 | 471 | 484 | 493 | 505 | 505 | 505 | 503 | 501 | 498 |

| | | | | | | | | | | | | | | | | |
|--------------------|------------|------------|------------|------------|------------|------------|------------|------------|------------|------------|------------|------------|------------|------------|------------|------------|
| Total: PK-5 | 376 | 391 | 431 | 434 | 439 | 443 | 453 | 471 | 484 | 493 | 505 | 505 | 505 | 503 | 501 | 498 |
| Change | | 15 | 40 | 3 | 5 | 4 | 10 | 18 | 13 | 9 | 12 | 0 | 0 | -2 | -2 | -3 |
| % Change | | 4.0% | 10.2% | 0.7% | 1.2% | 0.9% | 2.3% | 4.0% | 2.8% | 1.9% | 2.4% | 0.0% | 0.0% | -0.4% | -0.4% | -0.6% |

Forecasts developed January 2021
 Green cells (2020-2021 and earlier) are historical data
 Blue cells (2021-2022 and later) are forecasted years

- Total enrollment is forecasted to increase by 62 students, or 14.0%, between 2020-21 and 2025-26.
 - Enrollment is forecasted to then decrease by 7 students or -1.4%, between 2025-26 and 2030-31.
- **In total, enrollment is forecasted to increase by 55 students, or 12.4%, between 2020-21 and 2030-31.**



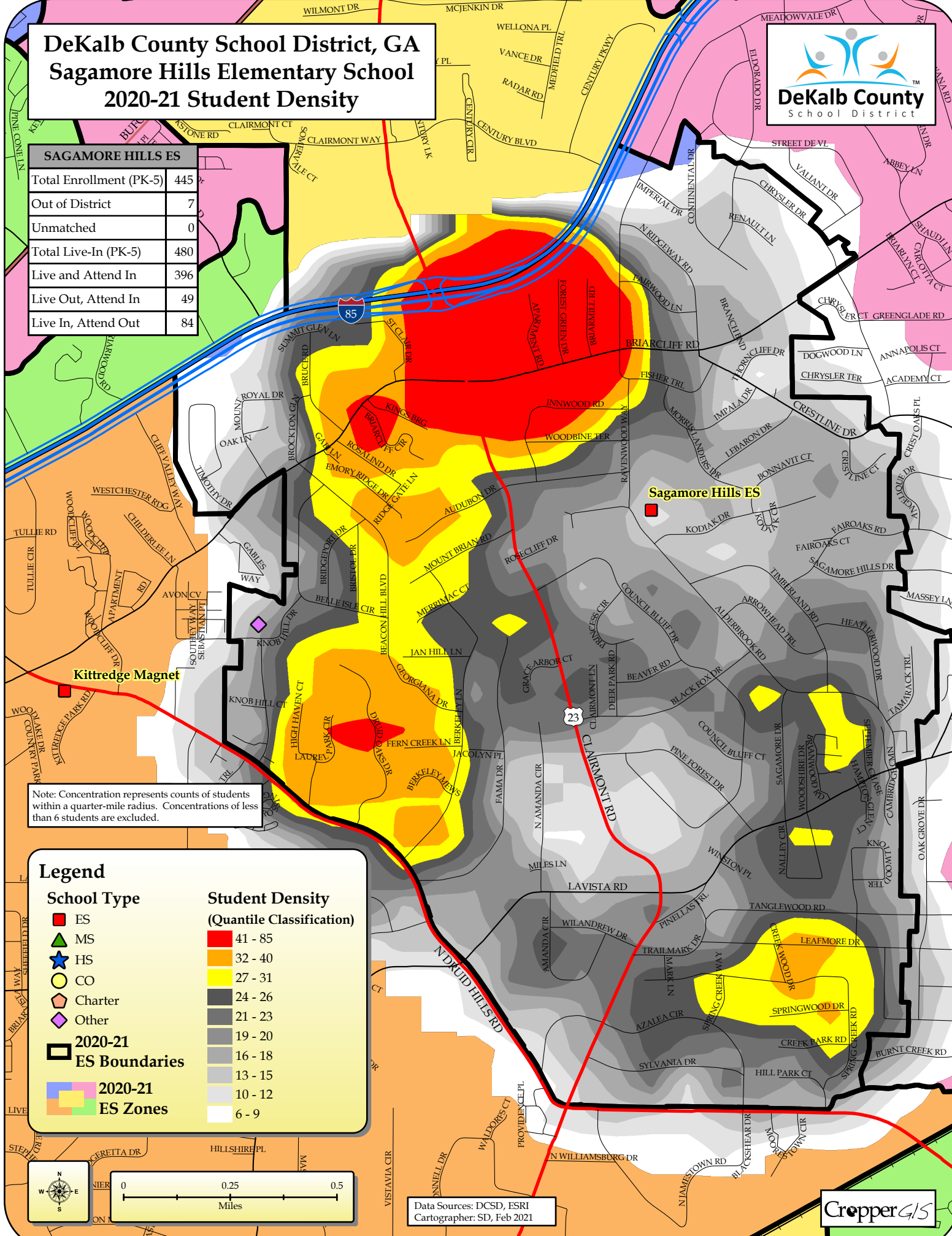
DeKalb County School District, GA

Sagamore Hills Elementary School

2020-21 Student Density



| SAGAMORE HILLS ES | |
|-------------------------|-----|
| Total Enrollment (PK-5) | 445 |
| Out of District | 7 |
| Unmatched | 0 |
| Total Live-In (PK-5) | 480 |
| Live and Attend In | 396 |
| Live Out, Attend In | 49 |
| Live In, Attend Out | 84 |



Note: Concentration represents counts of students within a quarter-mile radius. Concentrations of less than 6 students are excluded.

Legend

School Type

- ES
- ▲ MS
- ★ HS
- CO
- Charter
- ◆ Other
- 2020-21 ES Boundaries
- 2020-21 ES Zones

Student Density (Quantile Classification)

- 41 - 85
- 32 - 40
- 27 - 31
- 24 - 26
- 21 - 23
- 19 - 20
- 16 - 18
- 13 - 15
- 10 - 12
- 6 - 9



Data Sources: DCSD, ESRI
Cartographer: SD, Feb 2021

